

# 6 Foxglove Avenue

**SUBMITTED BY**  
Ray White Rockhampton Casey  
stockers@cqoz.com

---

**CREATED ON**  
2022-11-08

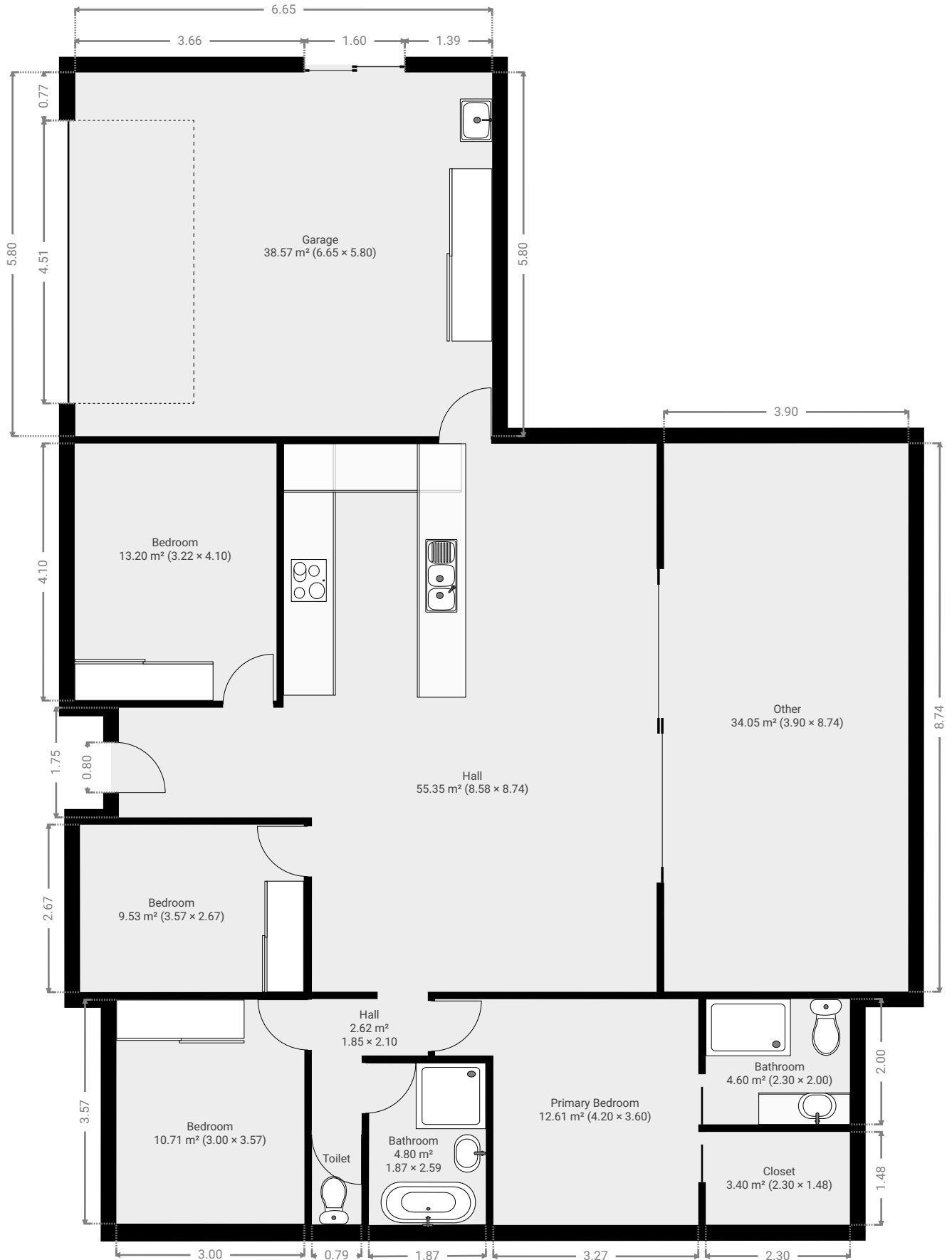
---

**Floors**  
1

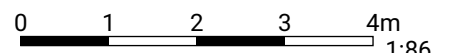
---

FLOORS: 1

▼ Ground Floor

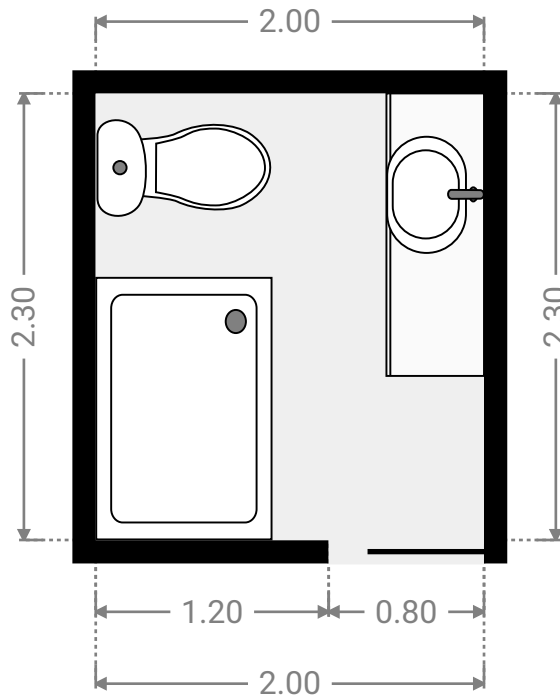
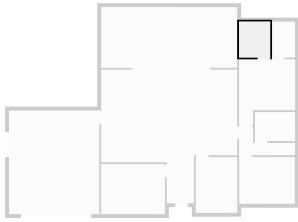


THIS FLOORPLAN IS PROVIDED WITHOUT WARRANTY OF ANY KIND. SENSOPIA DISCLAIMS ANY WARRANTY INCLUDING, WITHOUT LIMITATION, SATISFACTORY QUALITY OR ACCURACY OF DIMENSIONS.



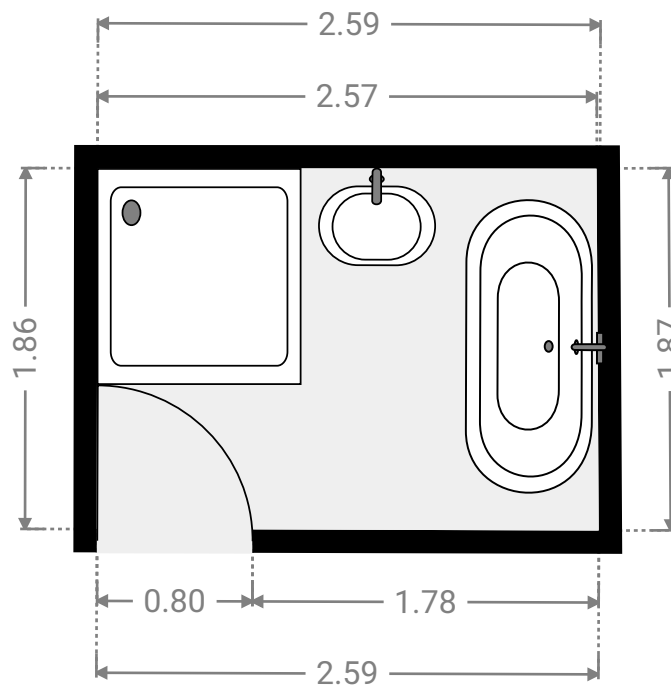
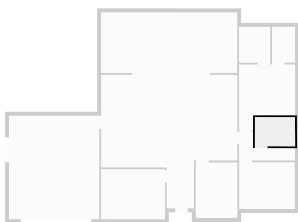
▼ **Bathroom**  
Ground Floor

WIDTH: 2.00 m • LENGTH: 2.30 m  
AREA: 4.60 m<sup>2</sup> • PERIMETER: 8.60 m



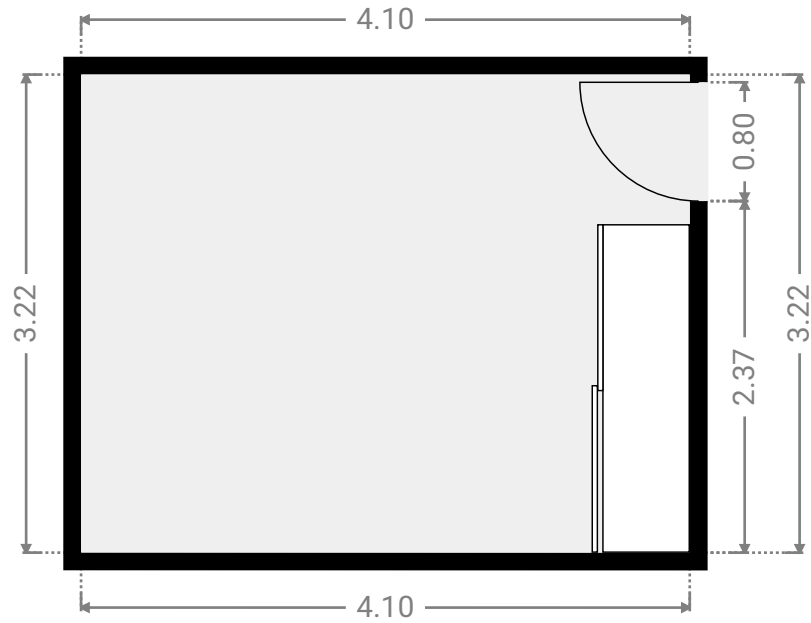
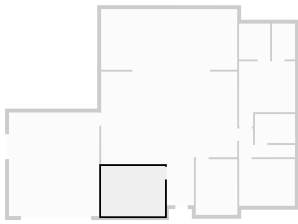
▼ **Bathroom**  
Ground Floor

WIDTH: 2.59 m • LENGTH: 1.87 m  
AREA: 4.80 m<sup>2</sup> • PERIMETER: 8.88 m



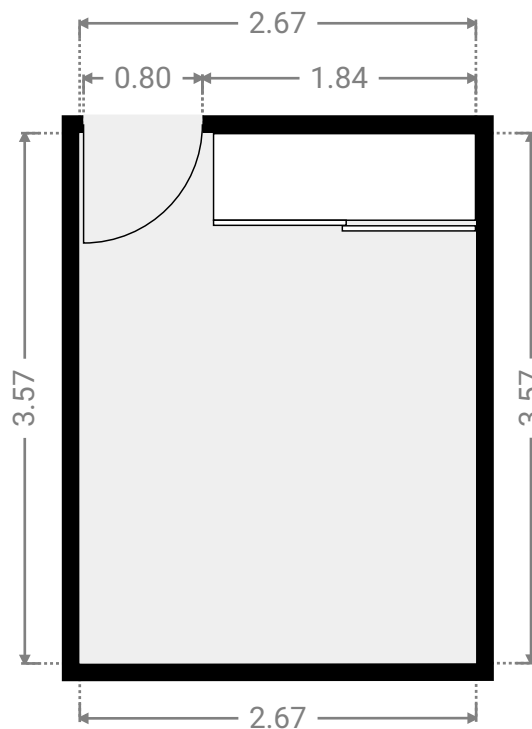
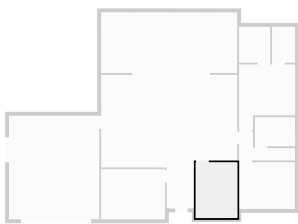
▼ **Bedroom**  
Ground Floor

WIDTH: 4.10 m • LENGTH: 3.22 m  
AREA: 13.20 m<sup>2</sup> • PERIMETER: 14.64 m



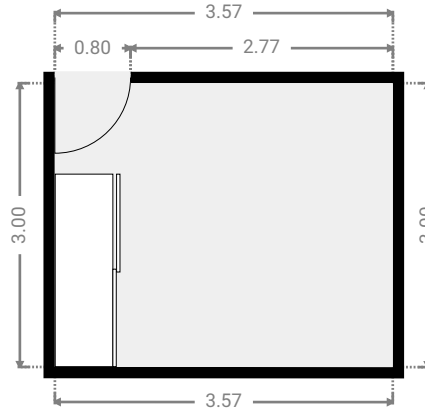
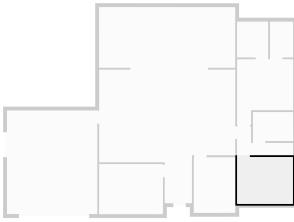
▼ **Bedroom**  
Ground Floor

WIDTH: 2.67 m • LENGTH: 3.57 m  
AREA: 9.53 m<sup>2</sup> • PERIMETER: 12.48 m



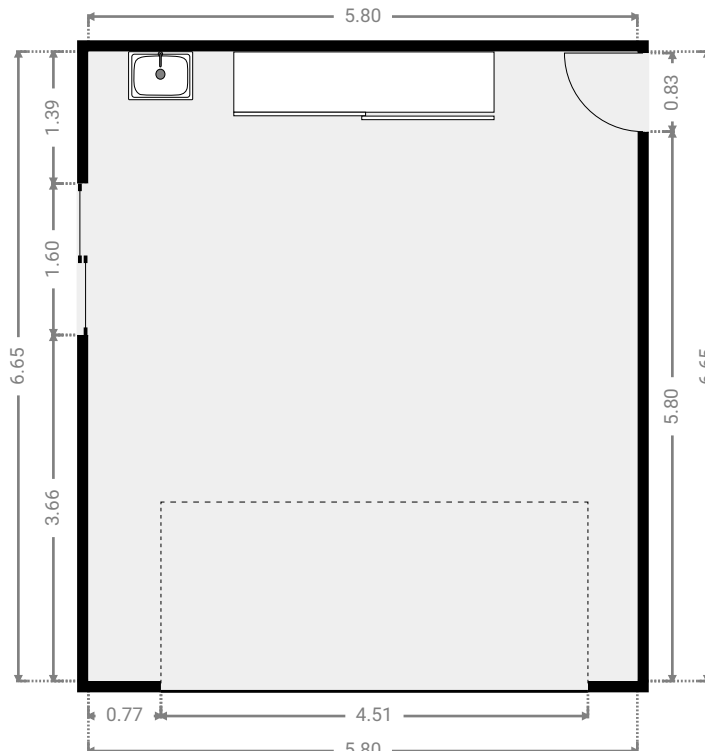
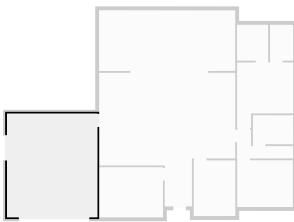
▼ **Bedroom**  
Ground Floor

WIDTH: 3.57 m • LENGTH: 3.00 m  
AREA: 10.71 m<sup>2</sup> • PERIMETER: 13.14 m



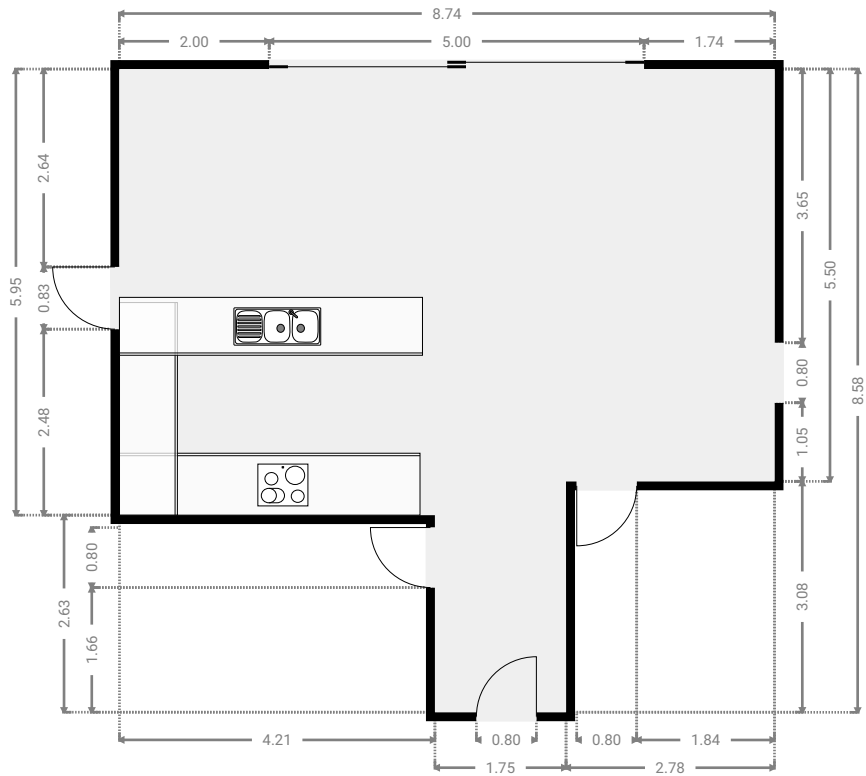
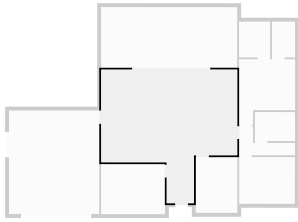
▼ **Garage**  
Ground Floor

WIDTH: 5.80 m • LENGTH: 6.65 m  
AREA: 38.57 m<sup>2</sup> • PERIMETER: 24.90 m



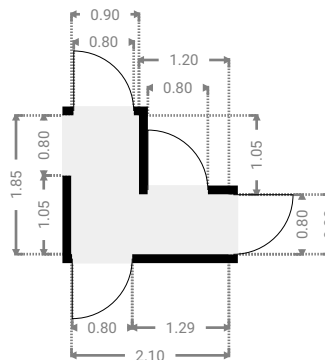
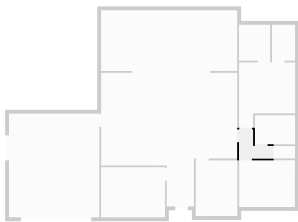
▼ Hall  
Ground Floor

WIDTH: 8.74 m • LENGTH: 8.58 m  
AREA: 55.35 m<sup>2</sup> • PERIMETER: 34.64 m



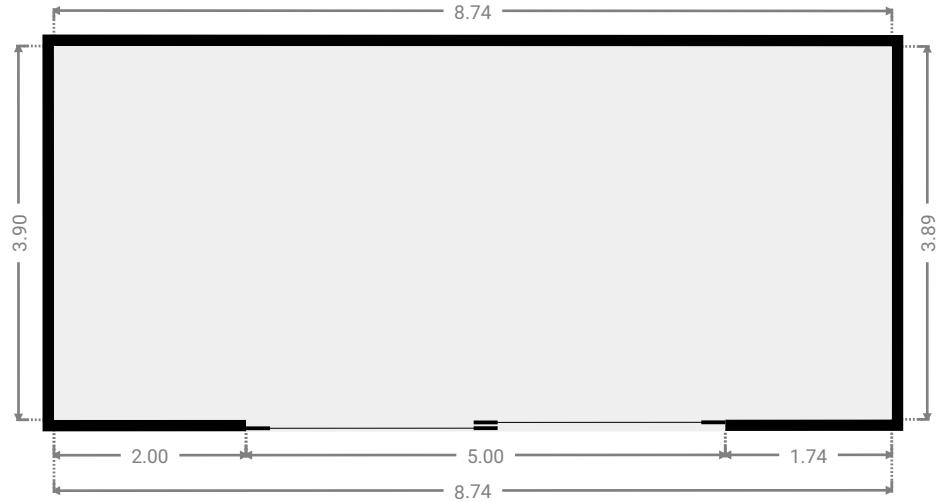
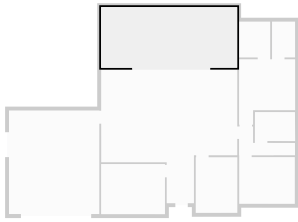
▼ Hall  
Ground Floor

WIDTH: 2.10 m • LENGTH: 1.85 m  
AREA: 2.62 m<sup>2</sup> • PERIMETER: 7.90 m



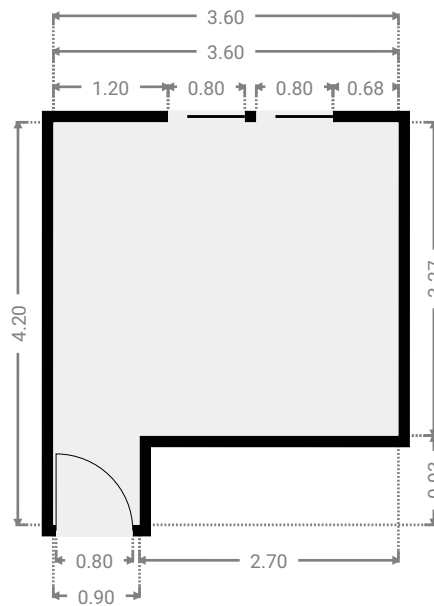
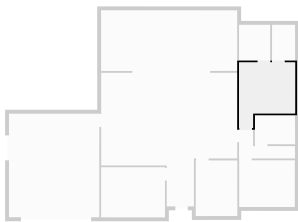
▼ Other  
Ground Floor

WIDTH: 8.74 m • LENGTH: 3.90 m  
AREA: 34.05 m<sup>2</sup> • PERIMETER: 25.27 m



▼ Primary Bedroom  
Ground Floor

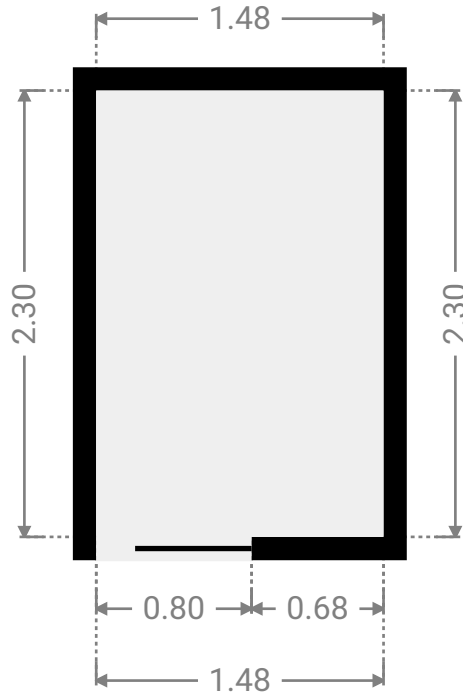
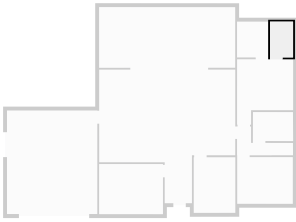
WIDTH: 3.60 m • LENGTH: 4.20 m  
AREA: 12.61 m<sup>2</sup> • PERIMETER: 15.60 m



FLOORS: 1

▼ **Closet**  
Ground Floor

WIDTH: 1.48 m • LENGTH: 2.30 m  
AREA: 3.40 m<sup>2</sup> • PERIMETER: 7.56 m



▼ **Toilet**  
Ground Floor

WIDTH: 1.37 m • LENGTH: 0.80 m  
AREA: 1.08 m<sup>2</sup> • PERIMETER: 4.33 m

