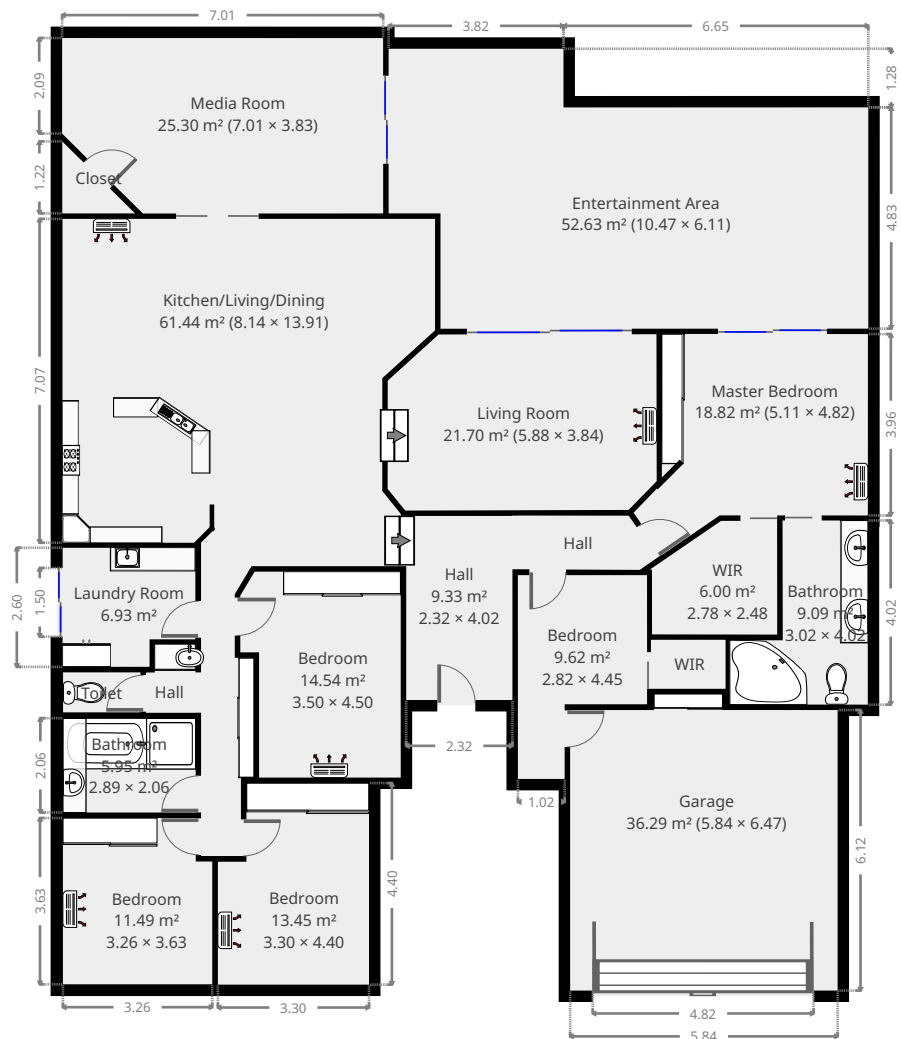
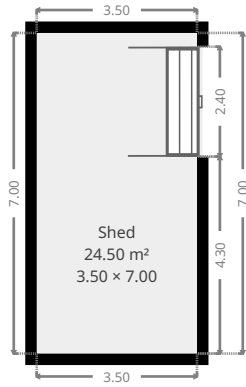


# 6 Cobble Court

## Ground Floor



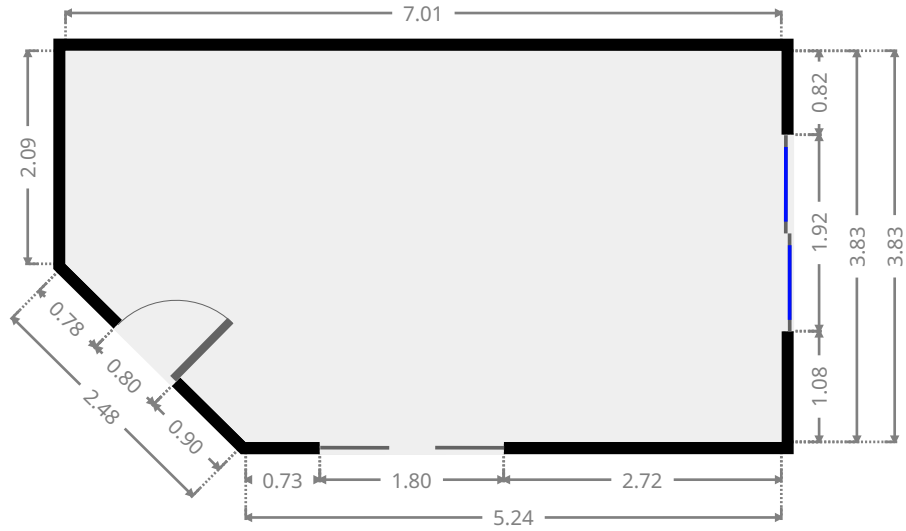
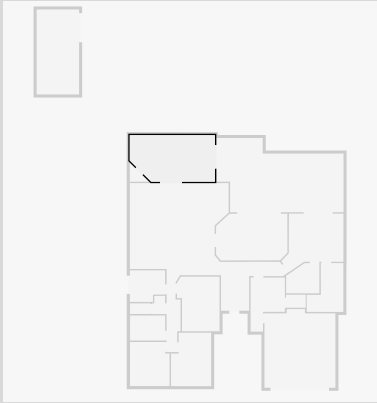
THIS FLOORPLAN IS PROVIDED WITHOUT WARRANTY OF ANY KIND. SENSOPIA DISCLAIMS ANY WARRANTY INCLUDING, WITHOUT LIMITATION, SATISFACTORY QUALITY OR ACCURACY OF DIMENSIONS.



# 6 Cobble Court

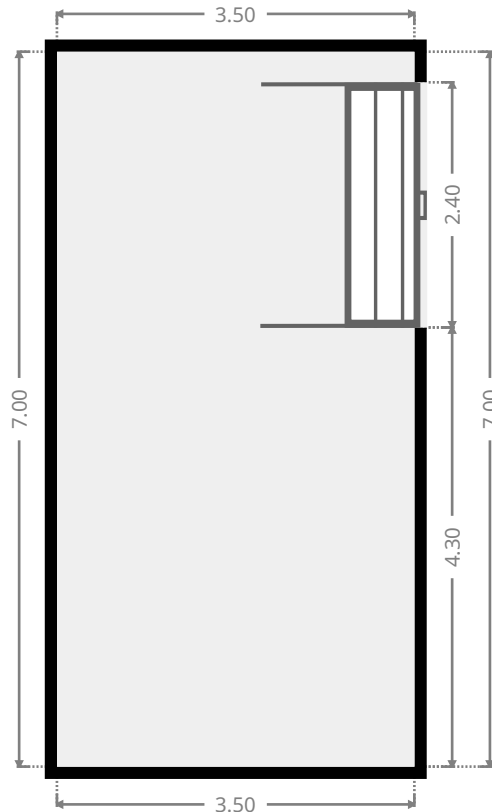
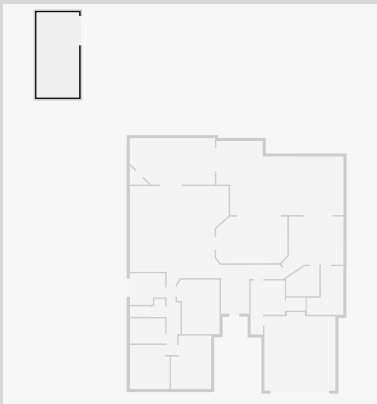
## Media Room

Width: 3.83 m  
 Length: 7.01 m  
 Area: 25.30 m<sup>2</sup>  
 Perimeter: 20.65 m



## Shed

Width: 3.50 m  
 Length: 7.00 m  
 Area: 24.50 m<sup>2</sup>  
 Perimeter: 21.00 m



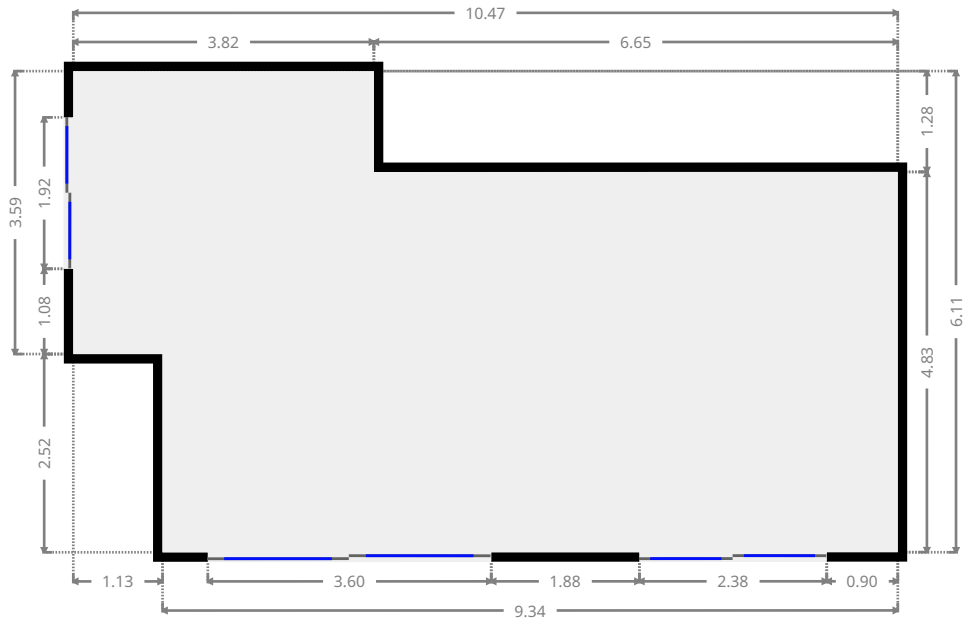
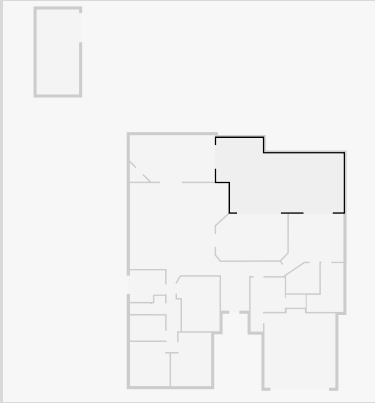
THIS FLOORPLAN IS PROVIDED WITHOUT WARRANTY OF ANY KIND. SENSOPIA DISCLAIMS ANY WARRANTY INCLUDING, WITHOUT LIMITATION, SATISFACTORY QUALITY OR ACCURACY OF DIMENSIONS.



# 6 Cobble Court

## Entertainment Area

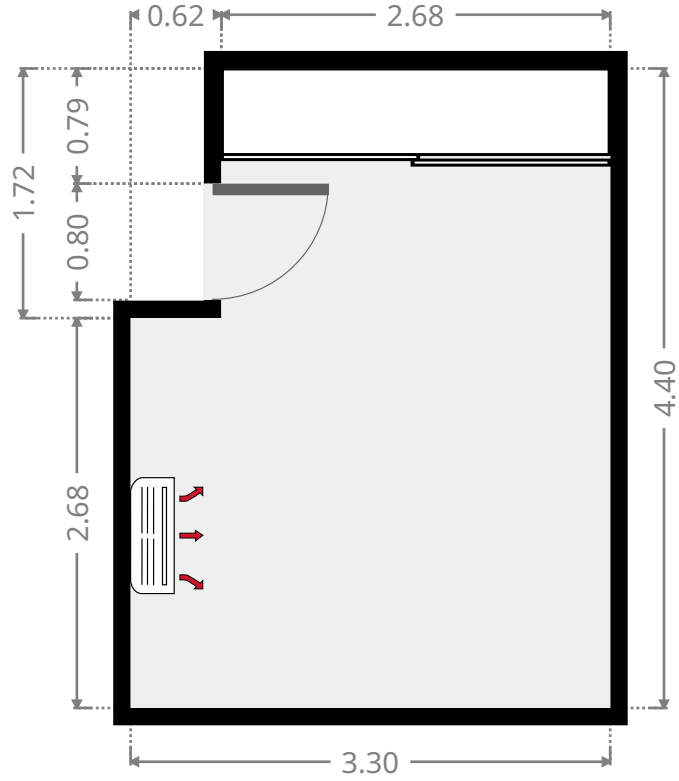
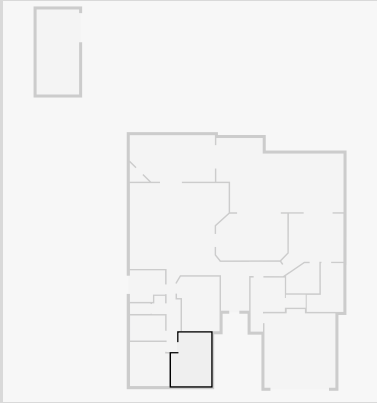
Width: 6.11 m  
Length: 10.47 m  
Area: 52.63 m<sup>2</sup>  
Perimeter: 33.17 m



# 6 Cobble Court

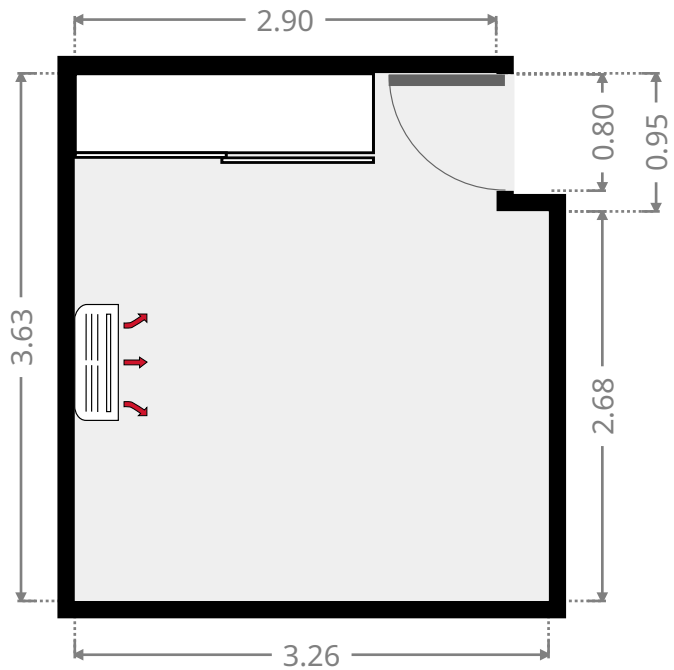
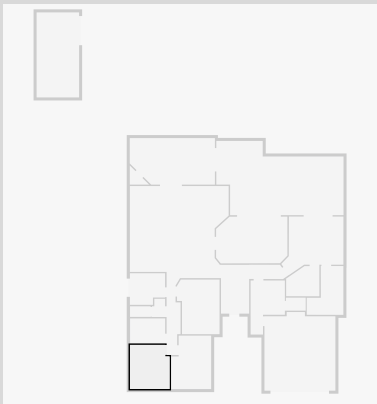
## Bedroom

Width: 3.30 m  
 Length: 4.40 m  
 Area: 13.45 m<sup>2</sup>  
 Perimeter: 15.40 m



## Bedroom

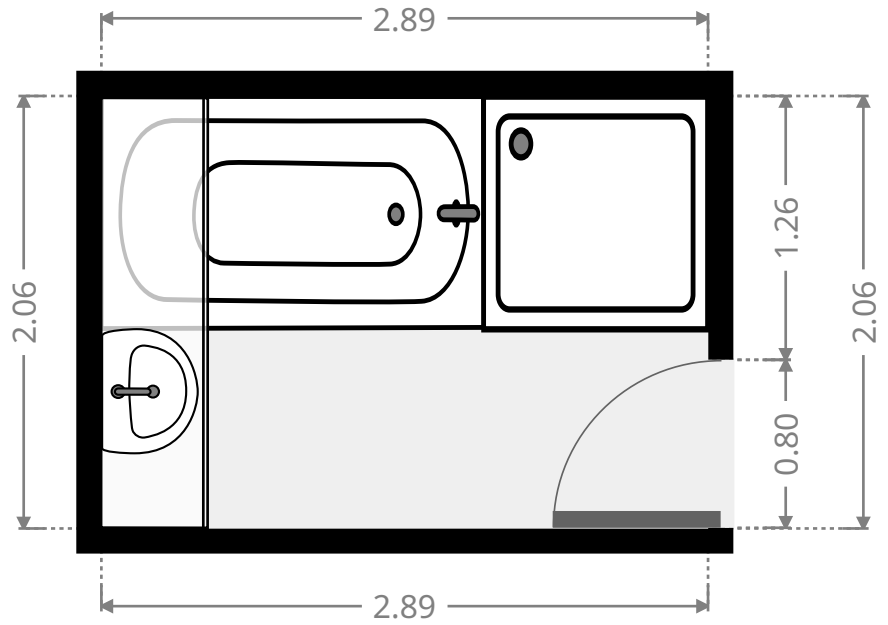
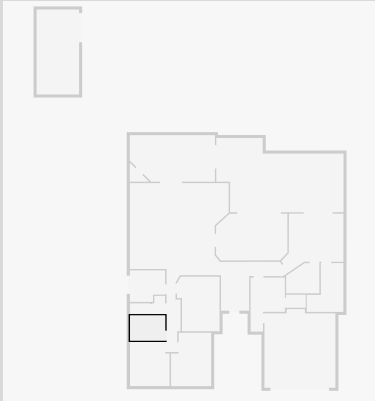
Width: 3.26 m  
 Length: 3.63 m  
 Area: 11.49 m<sup>2</sup>  
 Perimeter: 13.78 m



# 6 Cobble Court

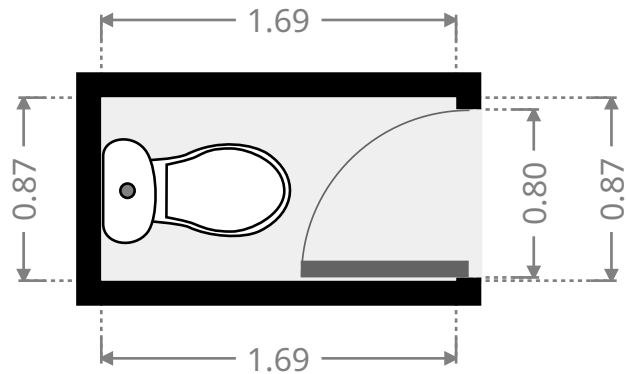
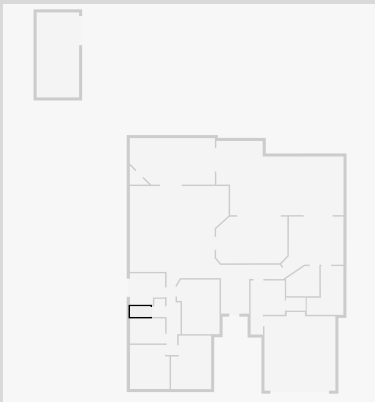
## Bathroom

Width: 2.06 m  
Length: 2.89 m  
Area: 5.95 m<sup>2</sup>  
Perimeter: 9.90 m



## Toilet / Half Bath

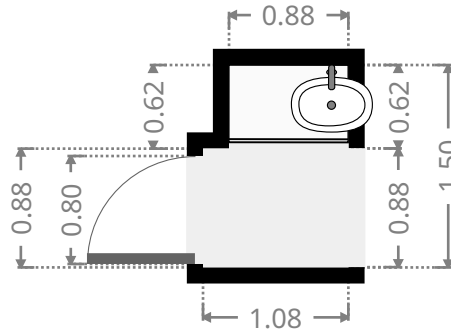
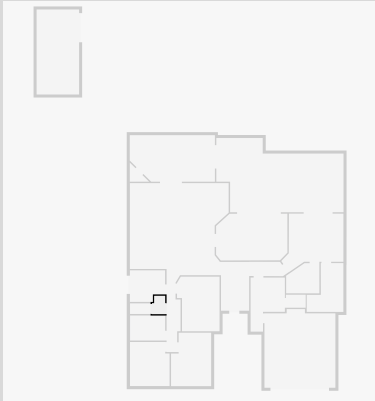
Width: 0.87 m  
Length: 1.69 m  
Area: 1.47 m<sup>2</sup>  
Perimeter: 5.12 m



# 6 Cobble Court

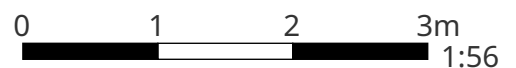
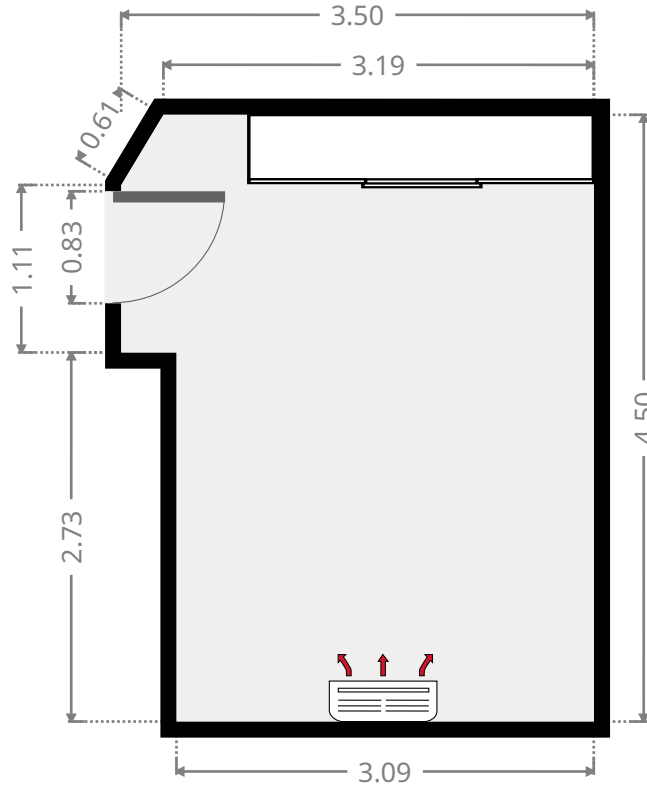
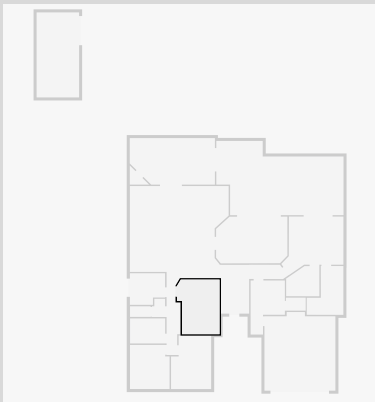
## Hall

Width: 1.08 m  
 Length: 1.50 m  
 Area: 1.50 m<sup>2</sup>  
 Perimeter: 5.15 m



## Bedroom

Width: 3.50 m  
 Length: 4.50 m  
 Area: 14.54 m<sup>2</sup>  
 Perimeter: 15.77 m

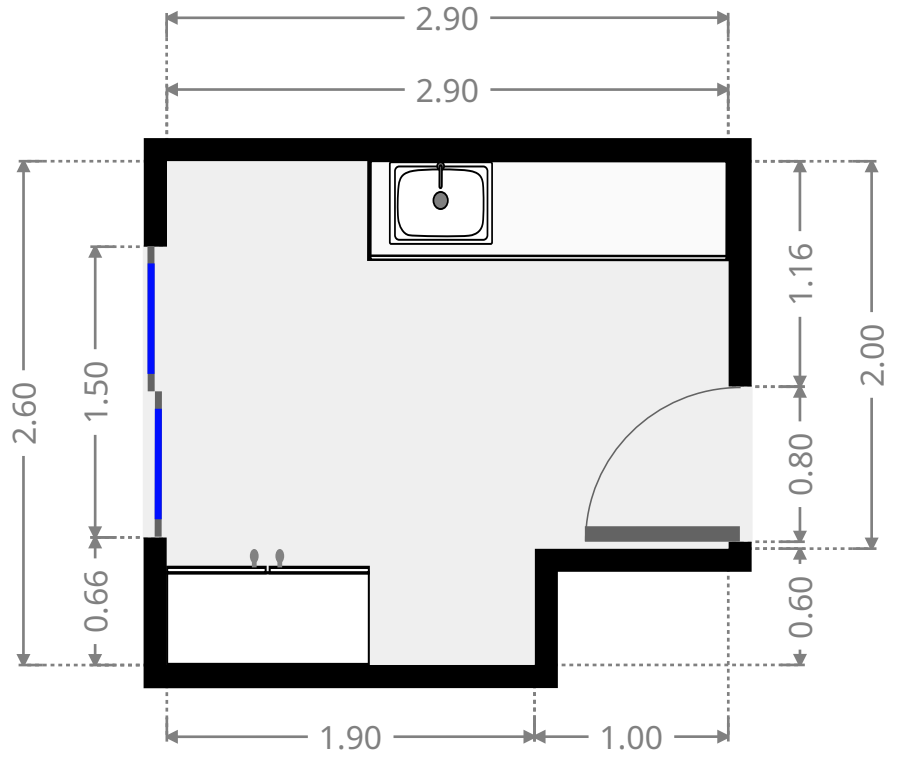
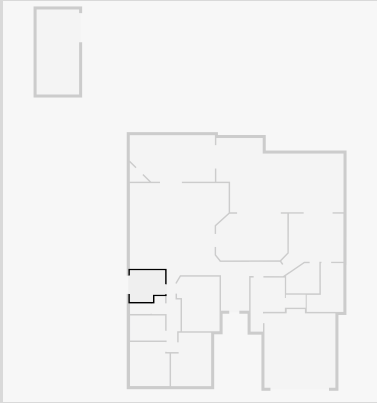


THIS FLOORPLAN IS PROVIDED WITHOUT WARRANTY OF ANY KIND. SENSOPIA DISCLAIMS ANY WARRANTY INCLUDING, WITHOUT LIMITATION, SATISFACTORY QUALITY OR ACCURACY OF DIMENSIONS.

# 6 Cobble Court

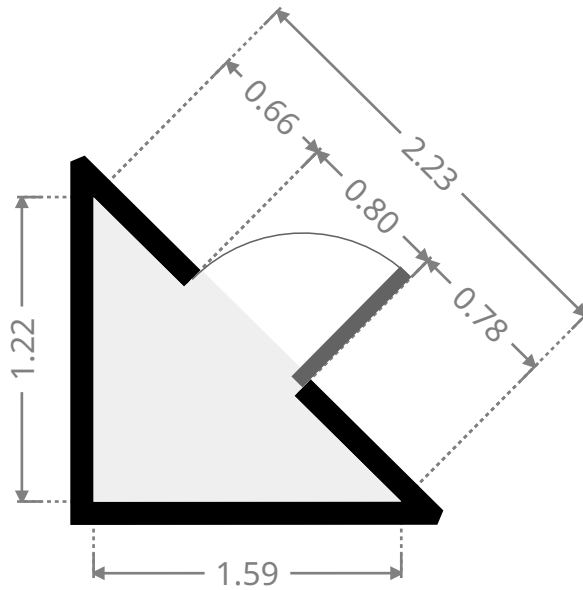
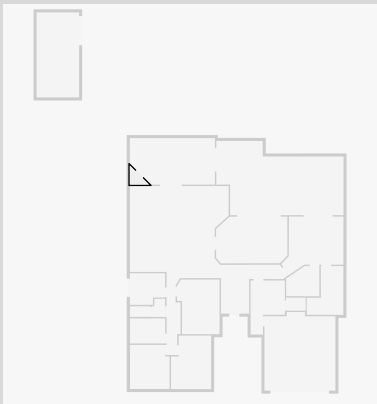
## Laundry Room

Width: 2.60 m  
 Length: 2.90 m  
 Area: 6.93 m<sup>2</sup>  
 Perimeter: 10.99 m

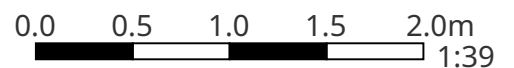


## Closet

Width: 1.57 m  
 Length: 1.59 m  
 Area: 1.25 m<sup>2</sup>  
 Perimeter: 5.39 m



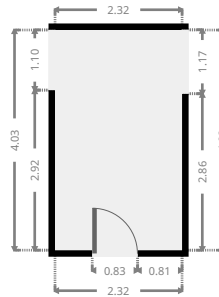
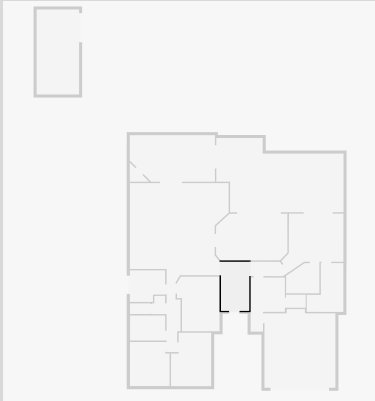
THIS FLOORPLAN IS PROVIDED WITHOUT WARRANTY OF ANY KIND. SENSOPIA DISCLAIMS ANY WARRANTY INCLUDING, WITHOUT LIMITATION, SATISFACTORY QUALITY OR ACCURACY OF DIMENSIONS.



# 6 Cobble Court

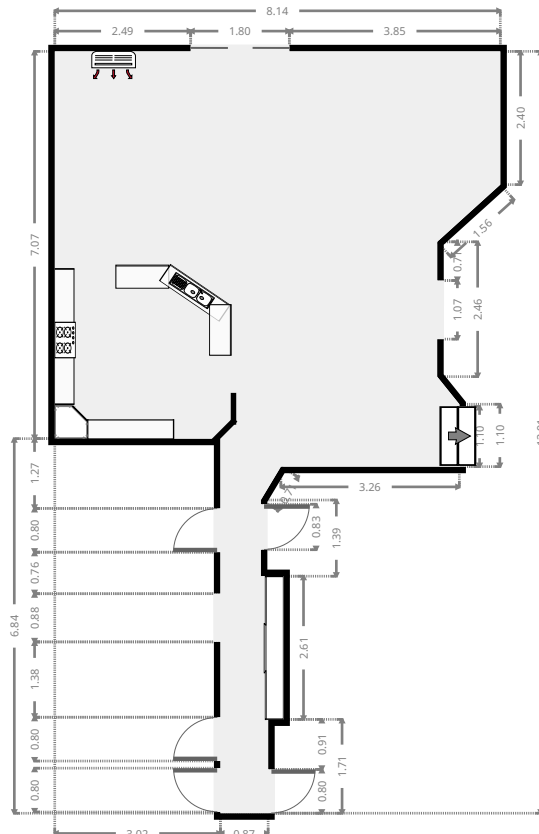
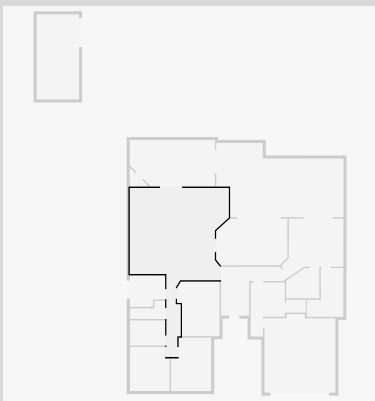
## Hall

Width:	2.32 m
Length:	4.02 m
Area	9.33 m <sup>2</sup>
Perimeter	12.68 m



## Kitchen/Living/Dining

Width:	8.14 m
Length:	13.91 m
Area	61.44 m <sup>2</sup>
Perimeter	44.55 m



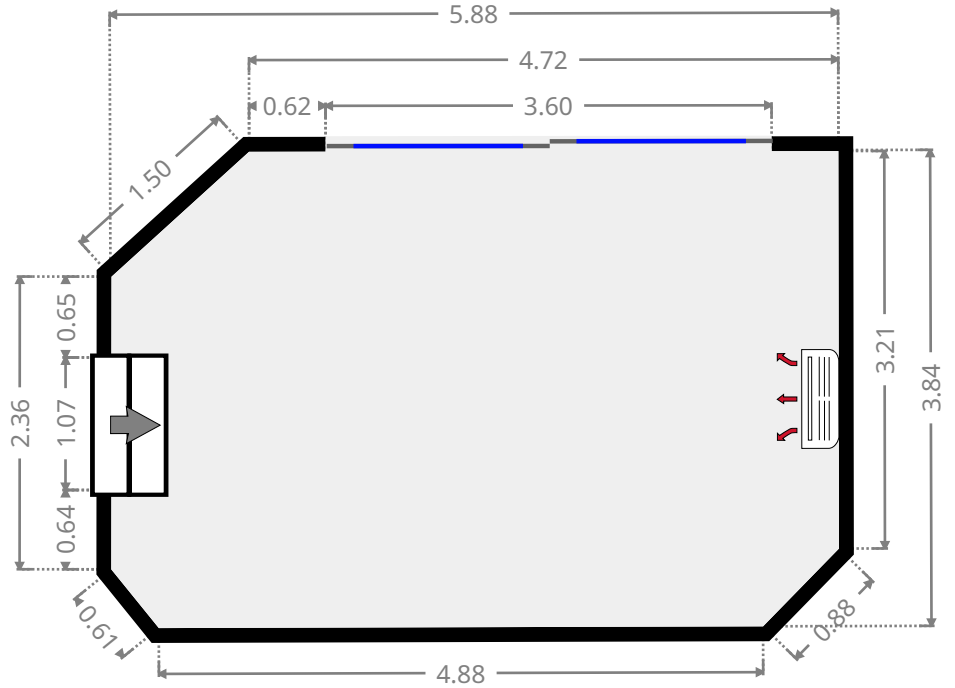
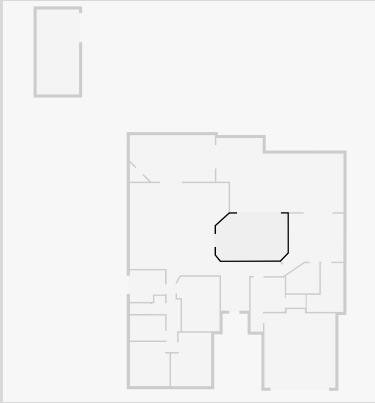
THIS FLOORPLAN IS PROVIDED WITHOUT WARRANTY OF ANY KIND. SENSOPIA DISCLAIMS ANY WARRANTY INCLUDING, WITHOUT LIMITATION, SATISFACTORY QUALITY OR ACCURACY OF DIMENSIONS.



# 6 Cobble Court

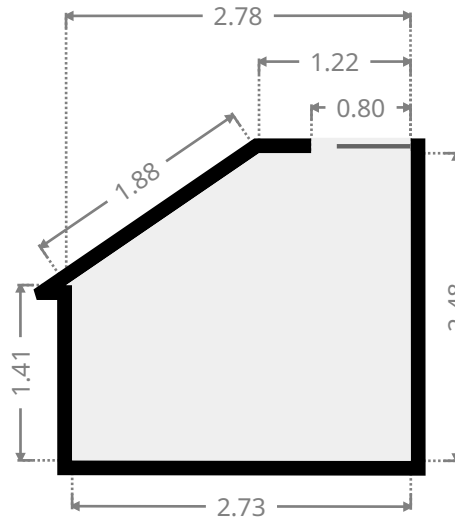
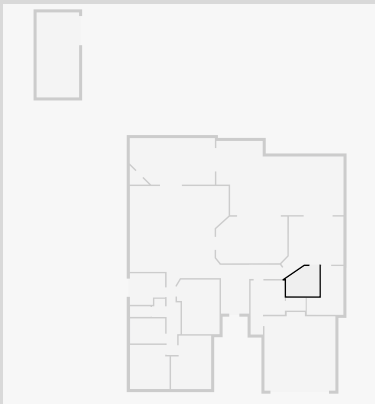
## Living Room

Width: 3.84 m  
 Length: 5.88 m  
 Area: 21.70 m<sup>2</sup>  
 Perimeter: 18.19 m



## WIR

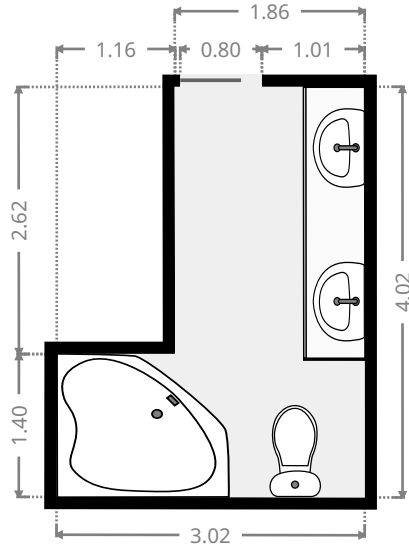
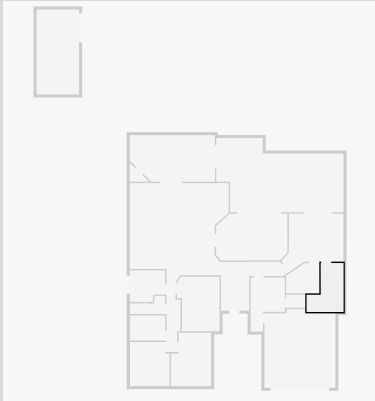
Width: 2.48 m  
 Length: 2.78 m  
 Area: 6.00 m<sup>2</sup>  
 Perimeter: 9.79 m



# 6 Cobble Court

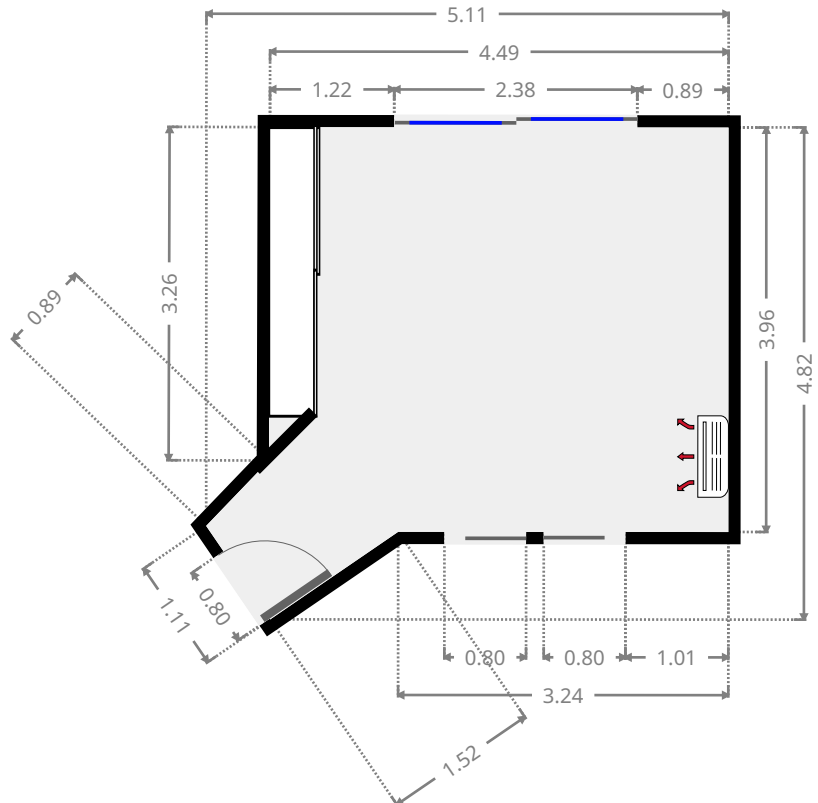
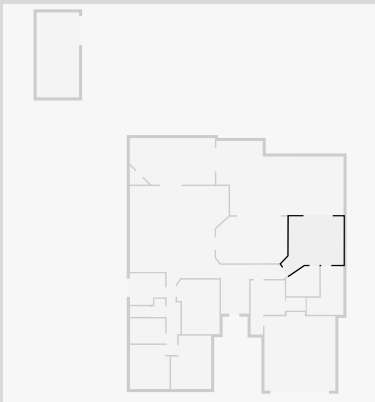
## Bathroom

Width: 3.02 m  
 Length: 4.02 m  
 Area: 9.09 m<sup>2</sup>  
 Perimeter: 14.08 m



## Master Bedroom

Width: 4.82 m  
 Length: 5.11 m  
 Area: 18.82 m<sup>2</sup>  
 Perimeter: 18.46 m

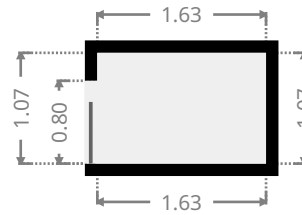
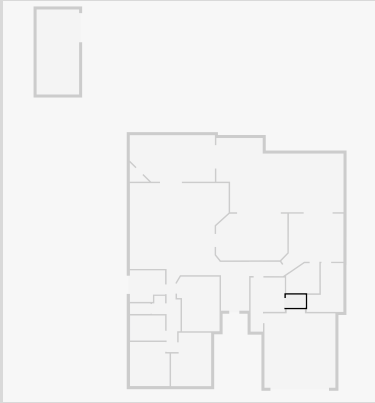


THIS FLOORPLAN IS PROVIDED WITHOUT WARRANTY OF ANY KIND. SENSOPIA DISCLAIMS ANY WARRANTY INCLUDING, WITHOUT LIMITATION, SATISFACTORY QUALITY OR ACCURACY OF DIMENSIONS.

# 6 Cobble Court

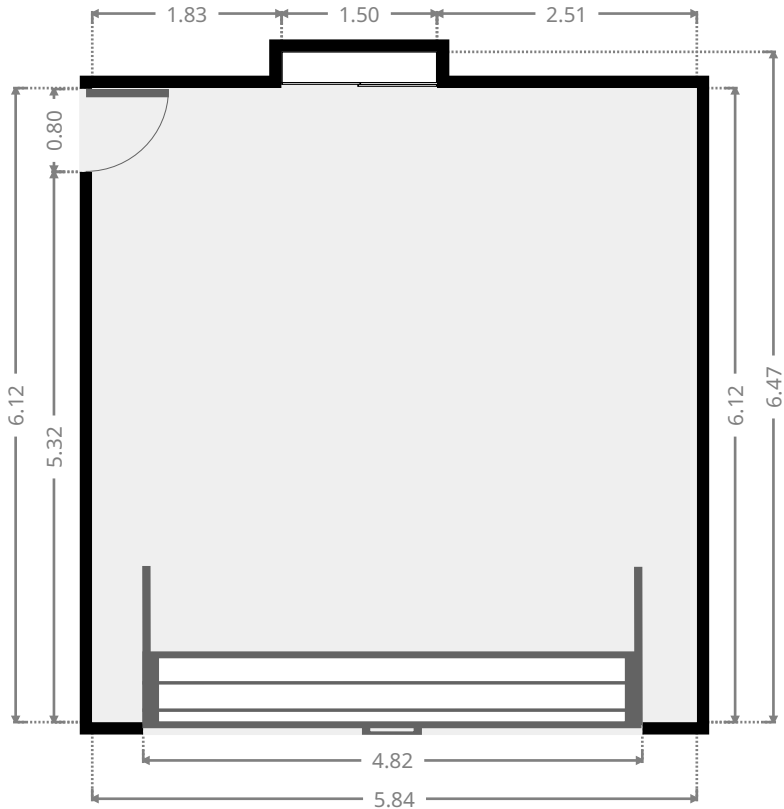
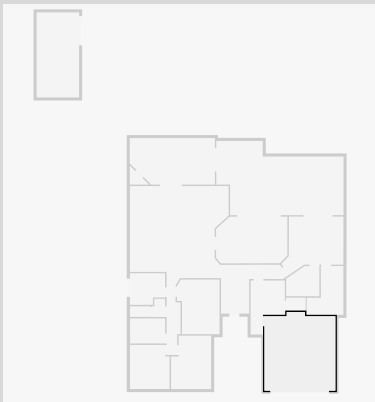
## WIR

Width: 1.07 m  
 Length: 1.63 m  
 Area: 1.74 m<sup>2</sup>  
 Perimeter: 5.40 m



## Garage

Width: 5.84 m  
 Length: 6.47 m  
 Area: 36.29 m<sup>2</sup>  
 Perimeter: 24.63 m

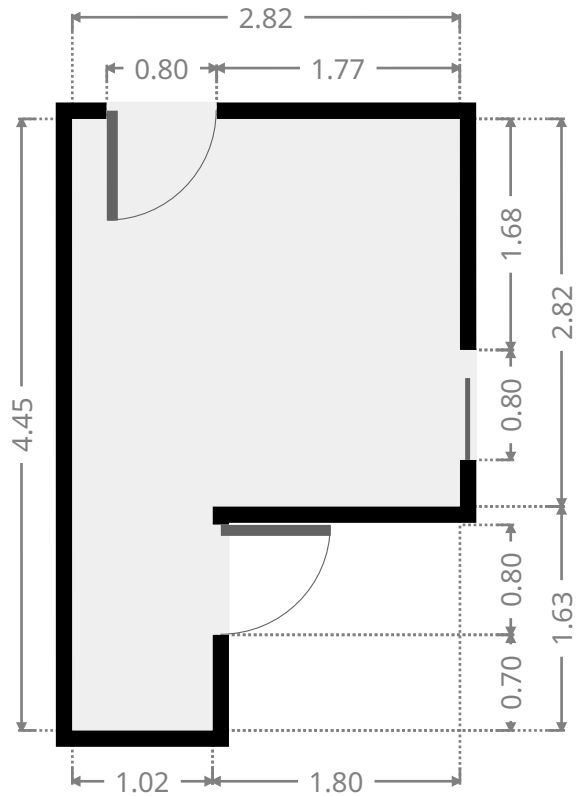
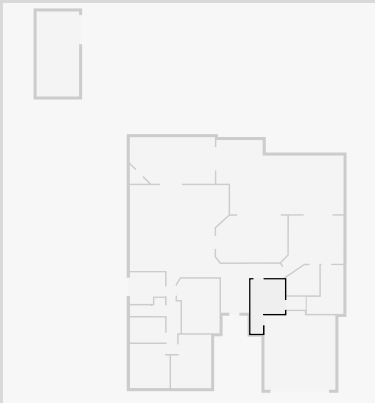


THIS FLOORPLAN IS PROVIDED WITHOUT WARRANTY OF ANY KIND. SENSOPIA DISCLAIMS ANY WARRANTY INCLUDING, WITHOUT LIMITATION, SATISFACTORY QUALITY OR ACCURACY OF DIMENSIONS.

# 6 Cobble Court

## Bedroom

Width: 2.82 m  
 Length: 4.45 m  
 Area: 9.62 m<sup>2</sup>  
 Perimeter: 14.54 m



## Hall

Width: 1.18 m  
 Length: 3.05 m  
 Area: 3.25 m<sup>2</sup>  
 Perimeter: 7.83 m

