

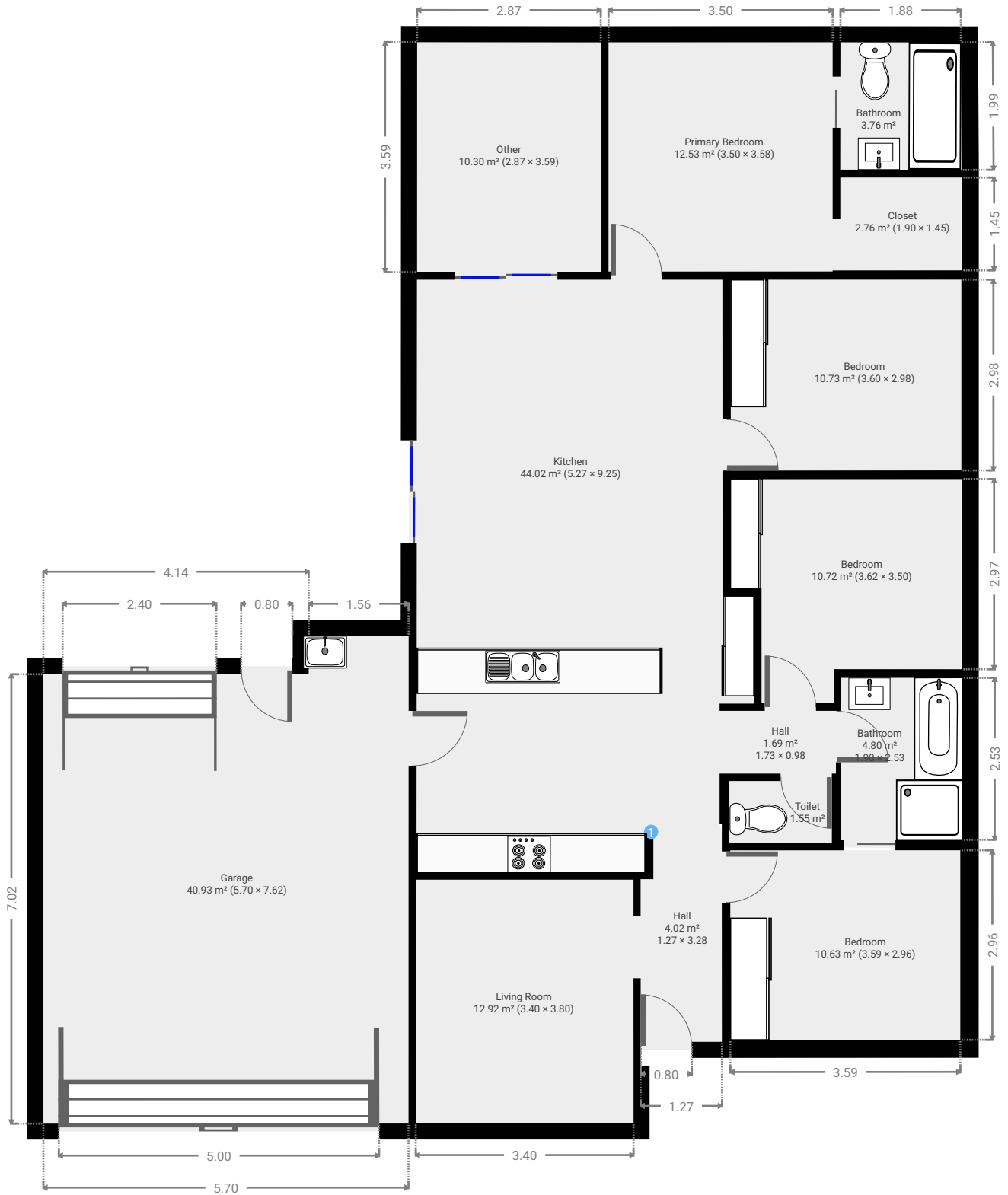
6 Cherry Court

SUBMITTED BY
Ray White Rockhampton Casey
stockers@cqoz.com

CREATED ON
2022-05-05

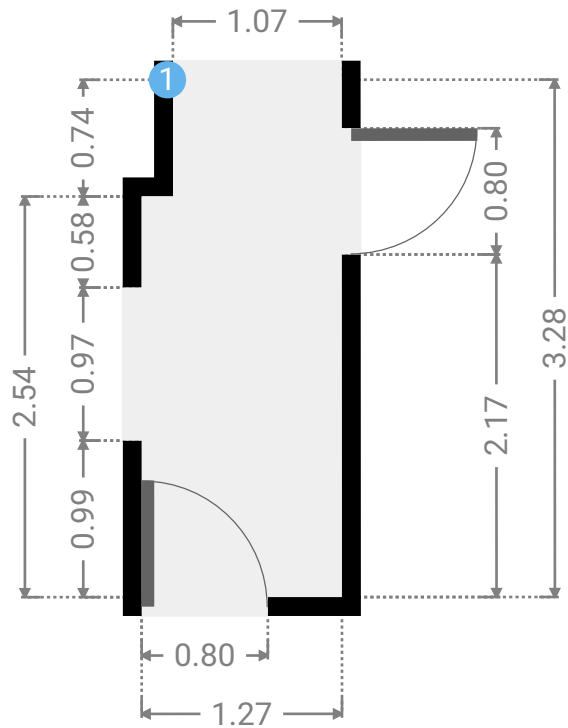
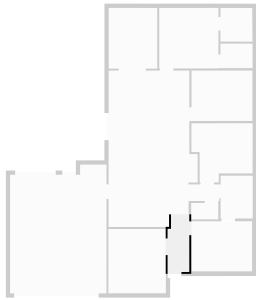
Floors
1

▼ Ground Floor



▼ Hall Ground Floor

WIDTH: 1.27 m • LENGTH: 3.28 m
AREA: 4.02 m² • PERIMETER: 9.10 m



▼ Hall/Ground Floor

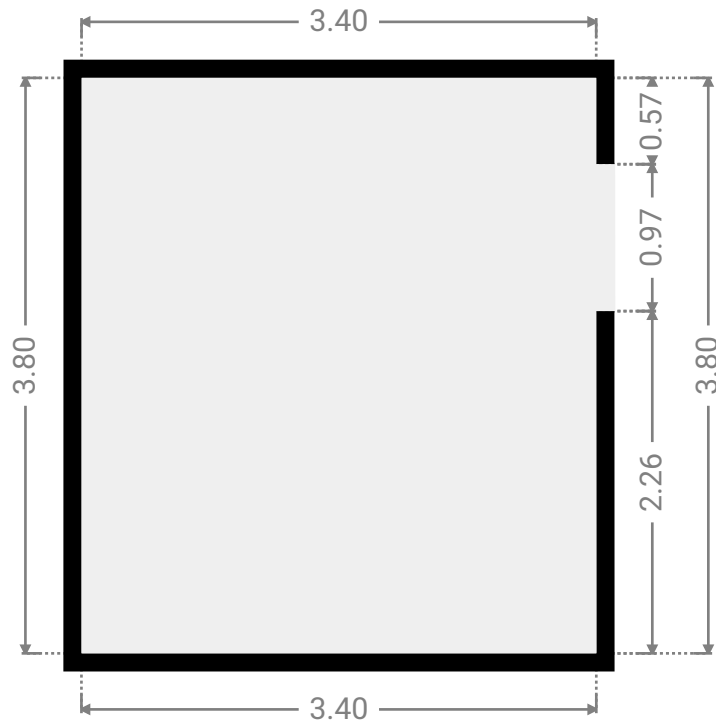
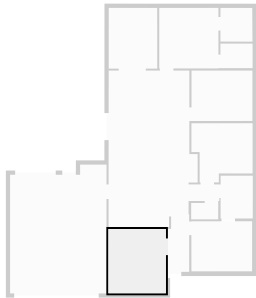
1 OPENING

Height
0.00 m



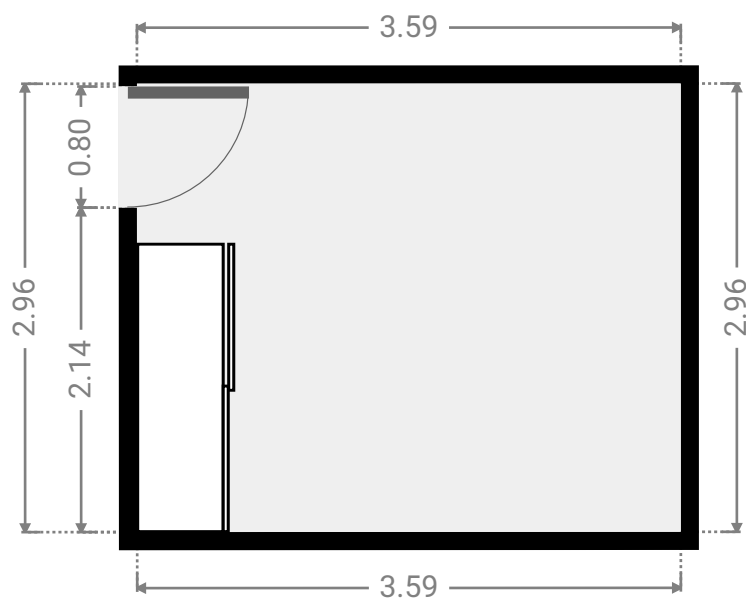
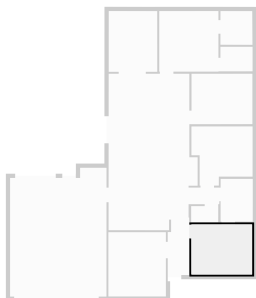
▼ Living Room Ground Floor

WIDTH: 3.40 m • LENGTH: 3.80 m
AREA: 12.92 m² • PERIMETER: 14.40 m



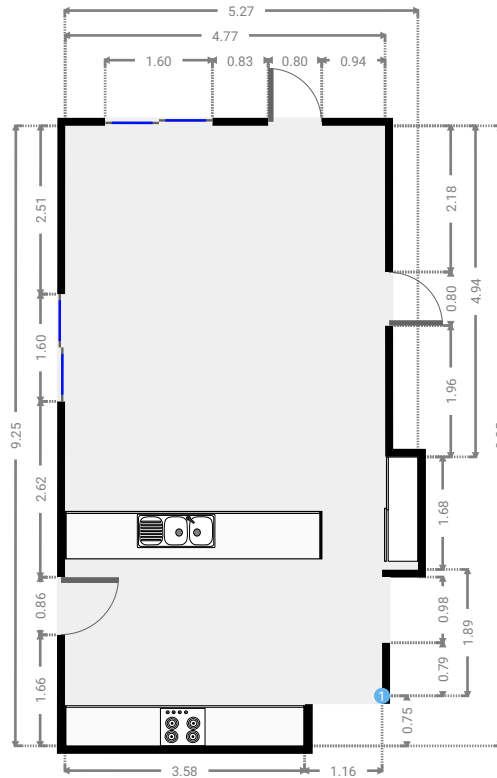
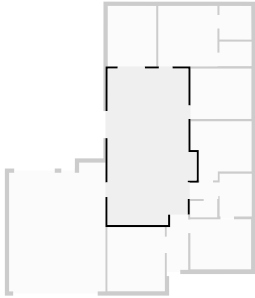
▼ Bedroom Ground Floor

WIDTH: 3.59 m • LENGTH: 2.96 m
AREA: 10.63 m² • PERIMETER: 13.10 m



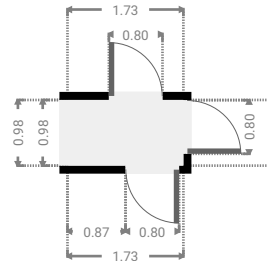
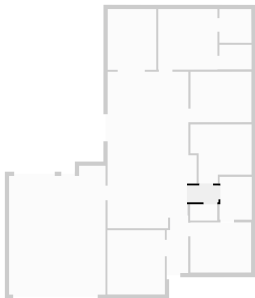
▼ Kitchen Ground Floor

WIDTH: 5.27 m • LENGTH: 9.25 m
AREA: 44.02 m² • PERIMETER: 29.03 m



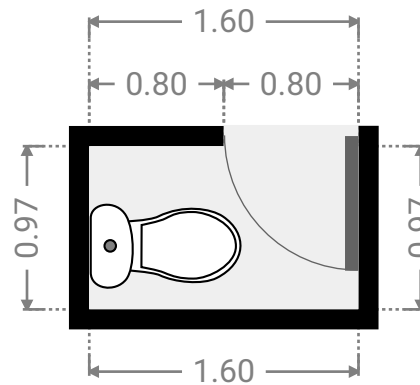
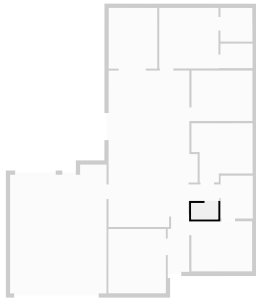
▼ Hall Ground Floor

WIDTH: 1.73 m • LENGTH: 0.98 m
AREA: 1.69 m² • PERIMETER: 5.42 m



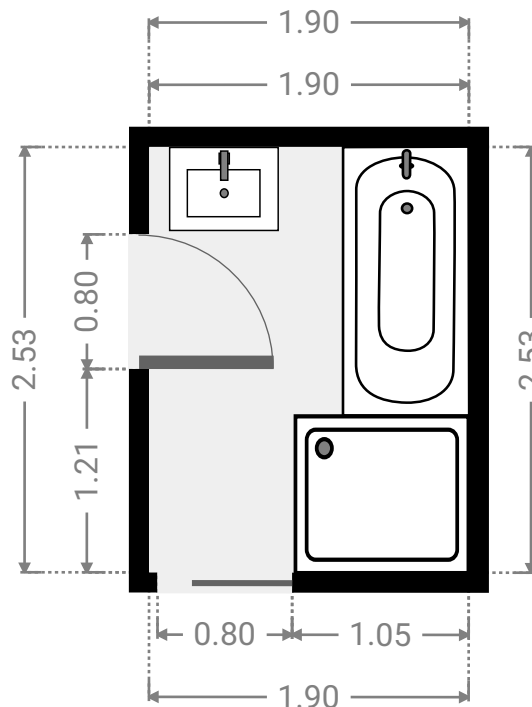
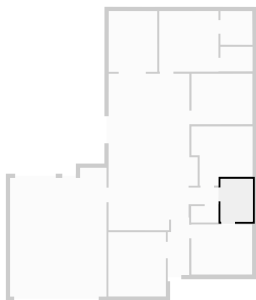
▼ Toilet Ground Floor

WIDTH: 1.60 m • LENGTH: 0.97 m
AREA: 1.55 m² • PERIMETER: 5.14 m



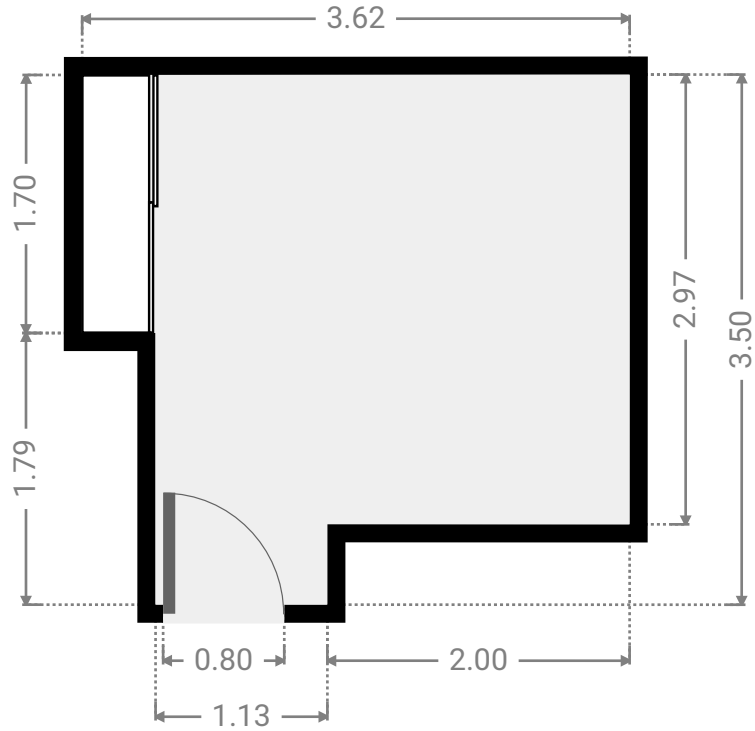
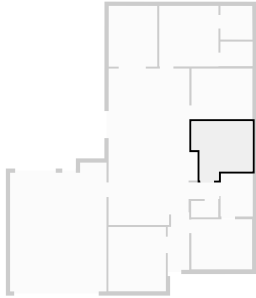
▼ Bathroom Ground Floor

WIDTH: 1.90 m • LENGTH: 2.53 m
AREA: 4.80 m² • PERIMETER: 8.86 m



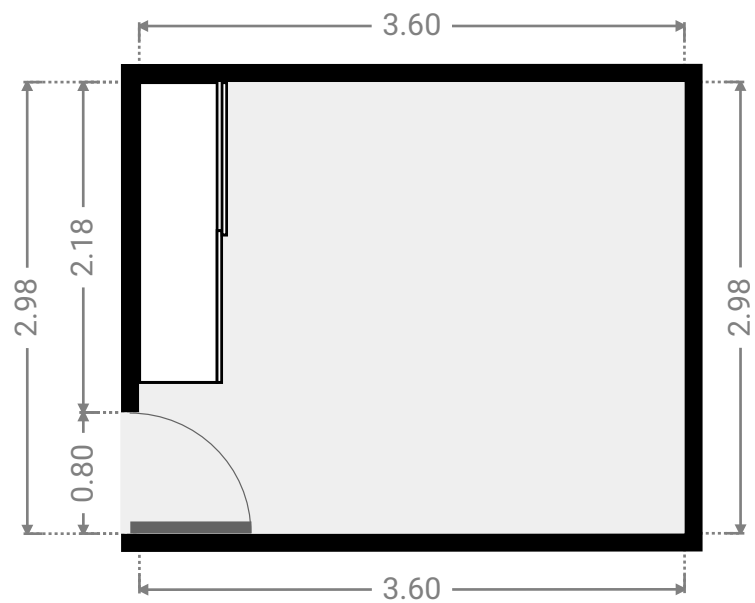
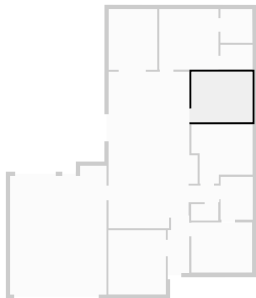
▼ Bedroom Ground Floor

WIDTH: 3.62 m • LENGTH: 3.50 m
AREA: 10.72 m² • PERIMETER: 14.23 m



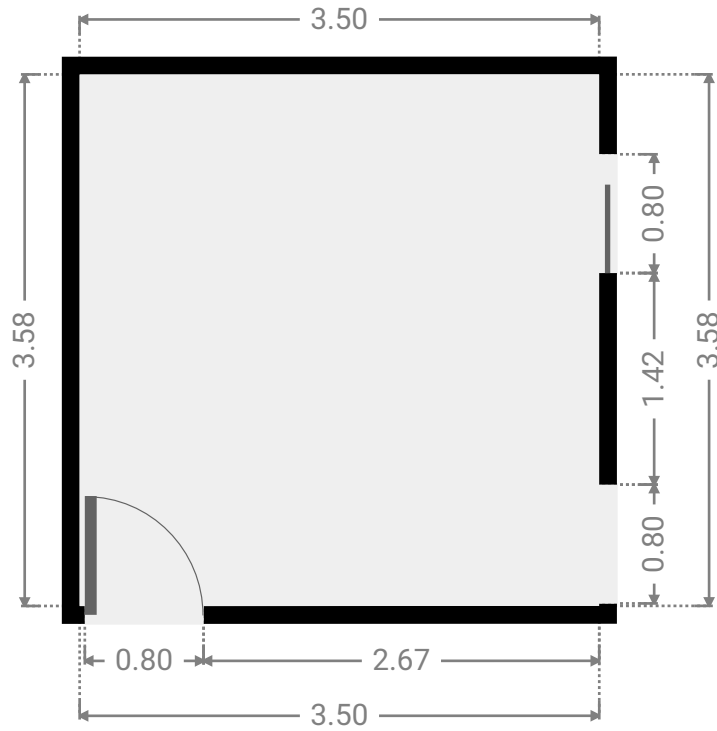
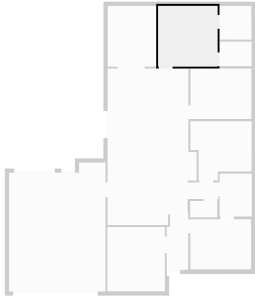
▼ Bedroom Ground Floor

WIDTH: 3.60 m • LENGTH: 2.98 m
AREA: 10.73 m² • PERIMETER: 13.16 m



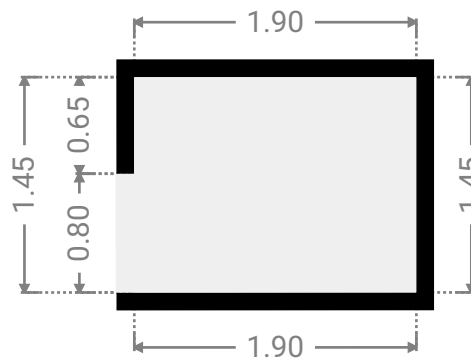
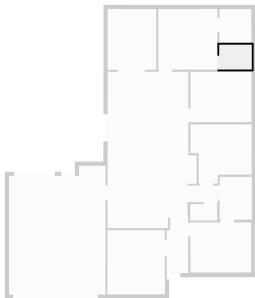
▼ Primary Bedroom Ground Floor

WIDTH: 3.50 m • LENGTH: 3.58 m
AREA: 12.53 m² • PERIMETER: 14.16 m



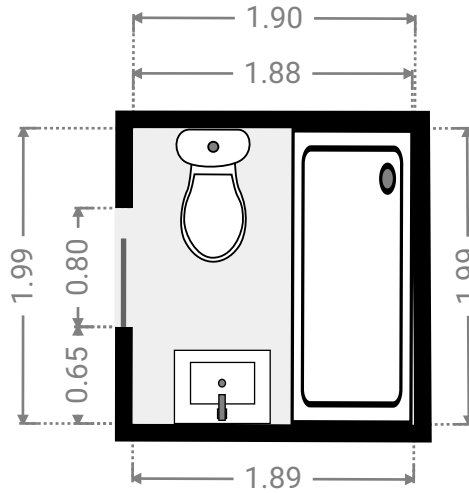
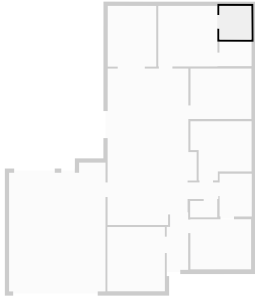
▼ Closet Ground Floor

WIDTH: 1.90 m • LENGTH: 1.45 m
AREA: 2.76 m² • PERIMETER: 6.70 m



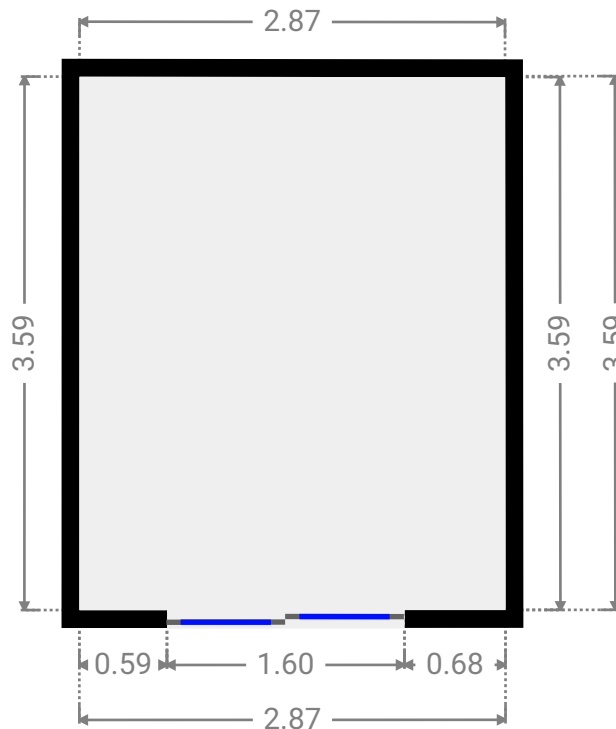
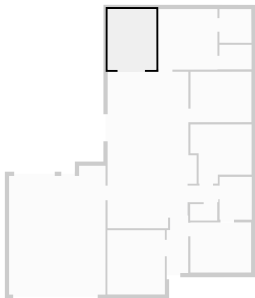
▼ Bathroom Ground Floor

WIDTH: 1.90 m • LENGTH: 1.99 m
AREA: 3.76 m² • PERIMETER: 7.76 m



▼ Other Ground Floor

WIDTH: 2.87 m • LENGTH: 3.59 m
AREA: 10.30 m² • PERIMETER: 12.92 m



▼ Garage Ground Floor

WIDTH: 5.70 m • LENGTH: 7.62 m
AREA: 40.93 m² • PERIMETER: 26.63 m

