

# 6 Beal Avenue

**SUBMITTED BY**  
Ray White Rockhampton Casey  
stockers@cqoz.com

---

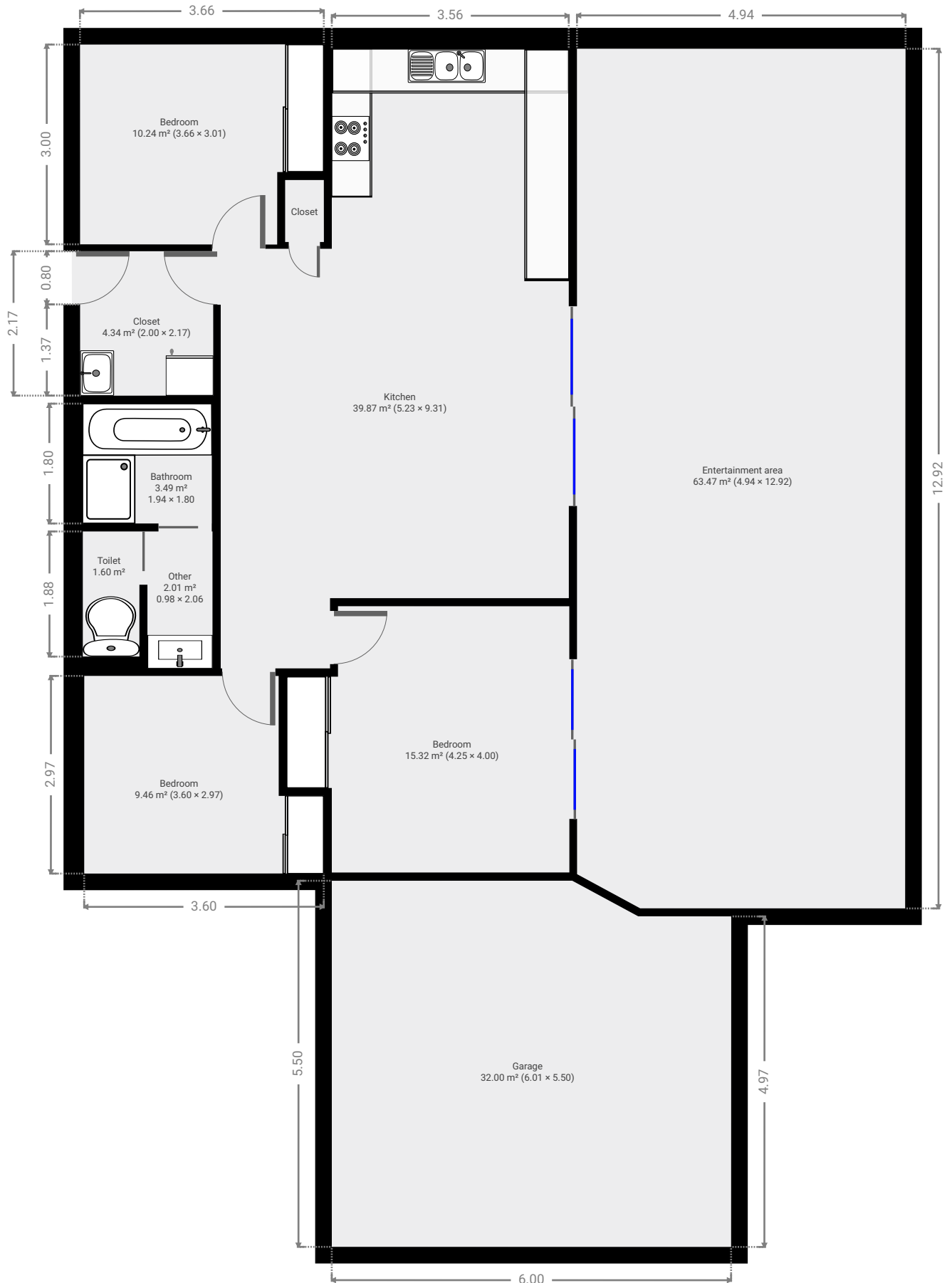
**CREATED ON**  
2022-03-14

---

**Floors**  
1

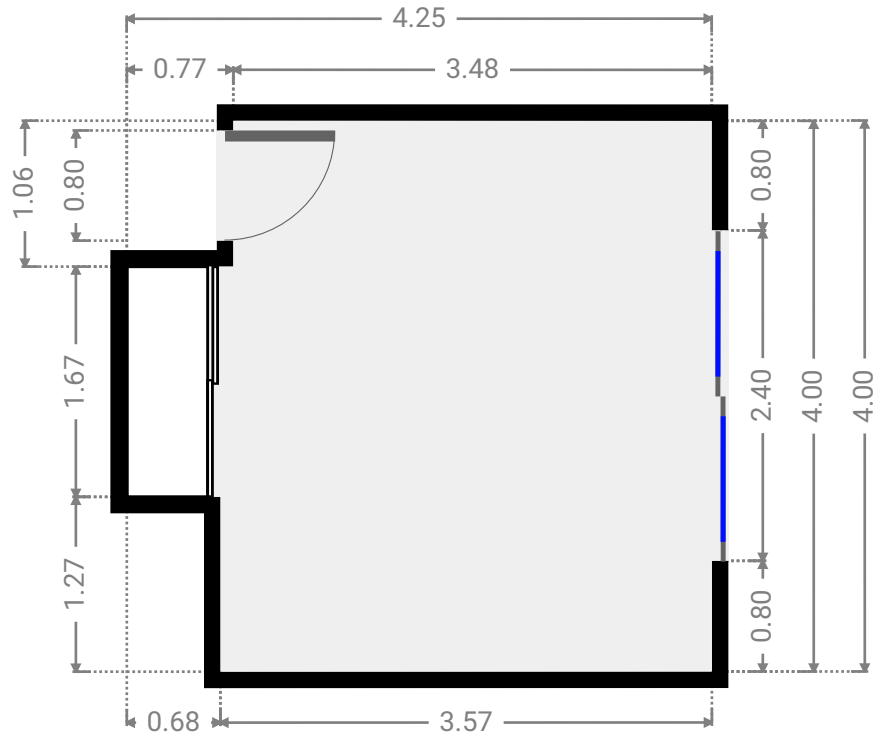
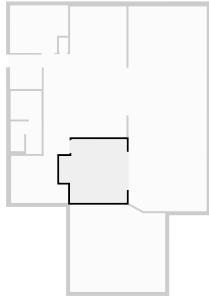
---

▼ Ground Floor



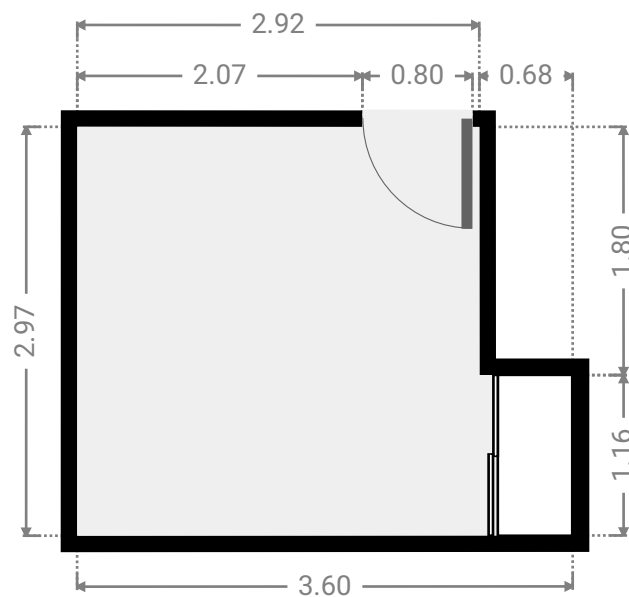
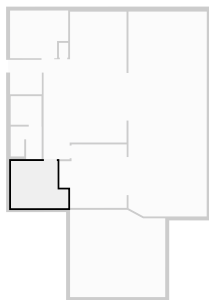
▼ **Bedroom**  
Ground Floor

WIDTH: 4.25 m • LENGTH: 4.00 m  
AREA: 15.32 m<sup>2</sup> • PERIMETER: 16.50 m



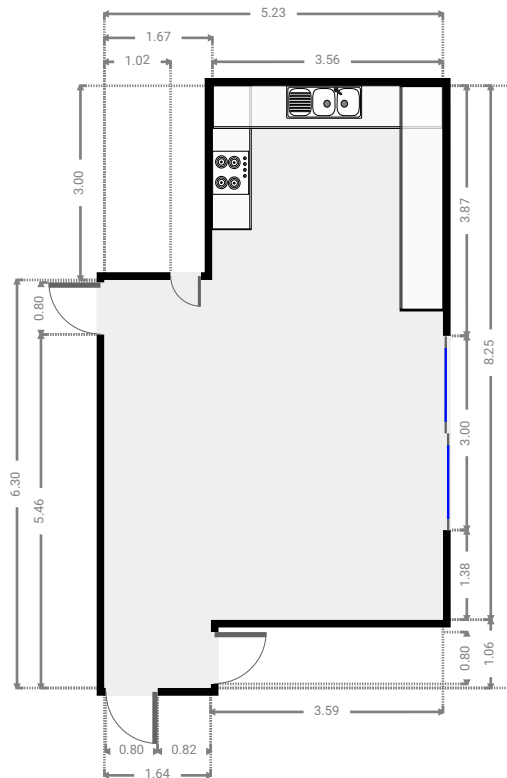
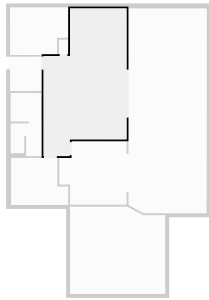
▼ **Bedroom**  
Ground Floor

WIDTH: 3.60 m • LENGTH: 2.97 m  
AREA: 9.46 m<sup>2</sup> • PERIMETER: 13.13 m



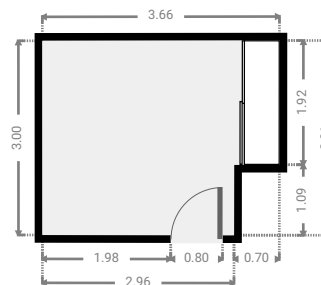
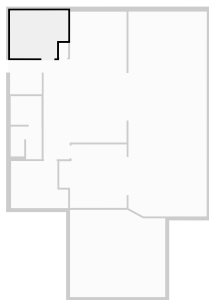
▼ Kitchen  
Ground Floor

WIDTH: 5.23 m • LENGTH: 9.31 m  
AREA: 39.87 m<sup>2</sup> • PERIMETER: 29.07 m



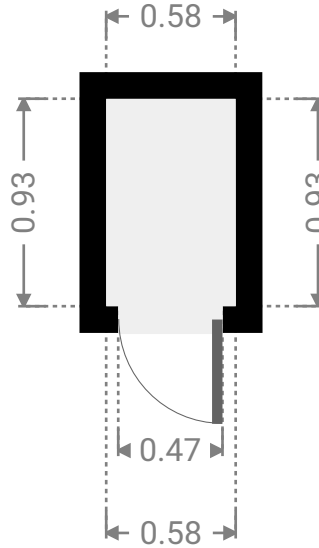
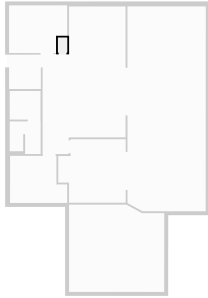
▼ Bedroom  
Ground Floor

WIDTH: 3.66 m • LENGTH: 3.01 m  
AREA: 10.24 m<sup>2</sup> • PERIMETER: 13.33 m



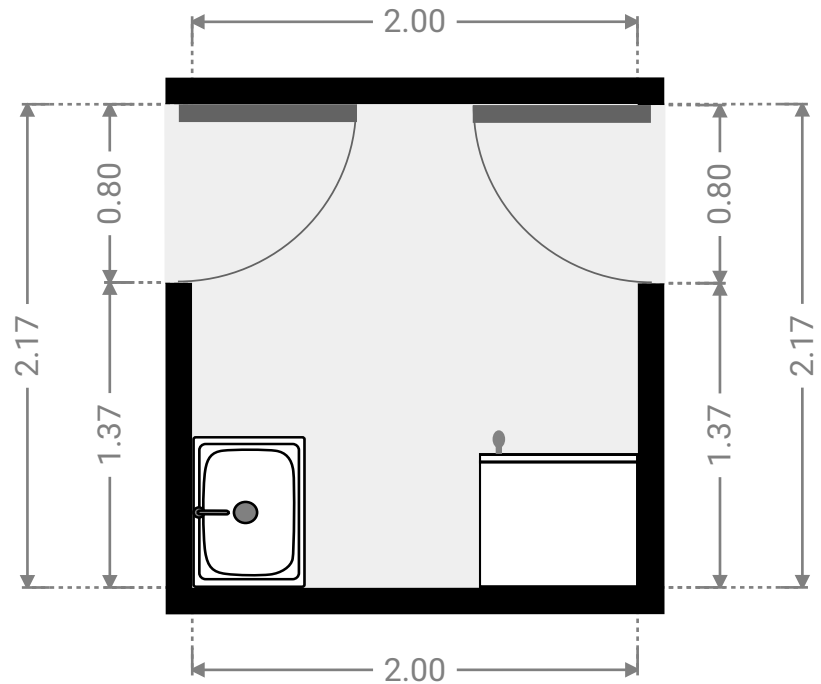
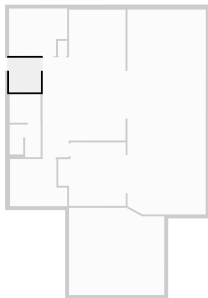
▼ **Closet**  
Ground Floor

WIDTH: 0.58 m • LENGTH: 0.93 m  
AREA: 0.54 m<sup>2</sup> • PERIMETER: 3.03 m



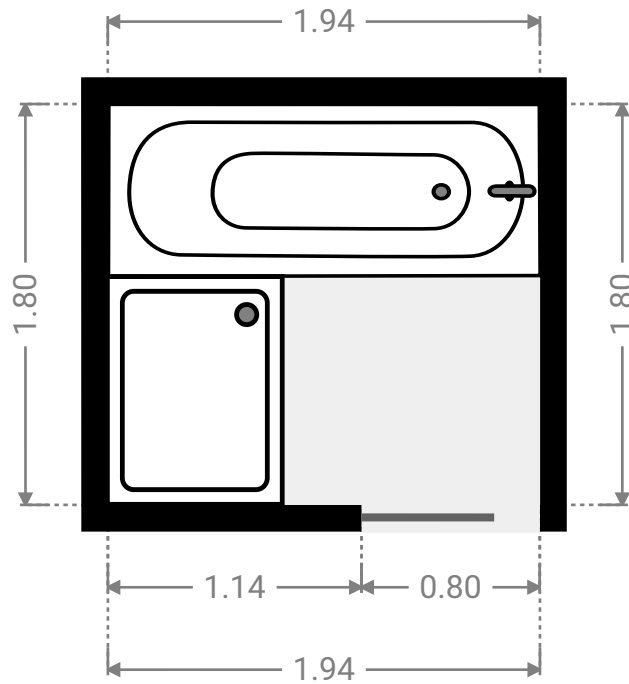
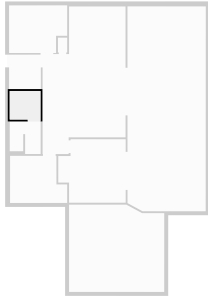
▼ **Closet**  
Ground Floor

WIDTH: 2.00 m • LENGTH: 2.17 m  
AREA: 4.34 m<sup>2</sup> • PERIMETER: 8.34 m



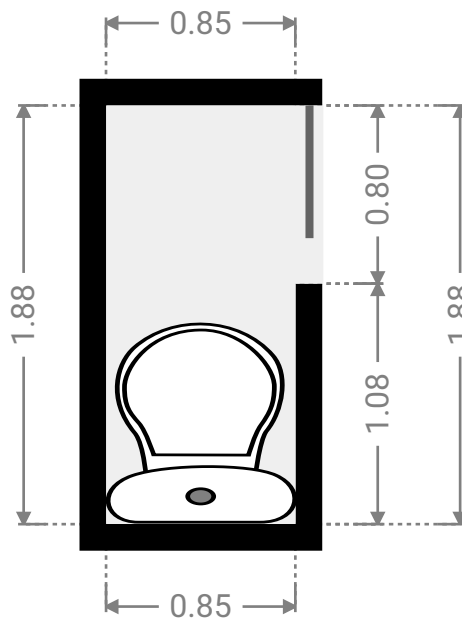
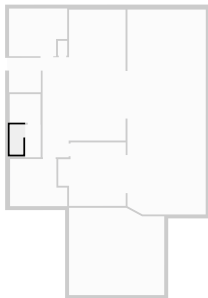
▼ **Bathroom**  
Ground Floor

WIDTH: 1.94 m • LENGTH: 1.80 m  
AREA: 3.49 m<sup>2</sup> • PERIMETER: 7.48 m



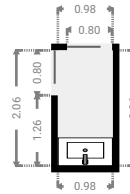
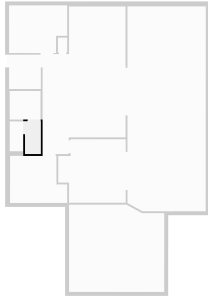
▼ **Toilet**  
Ground Floor

WIDTH: 0.85 m • LENGTH: 1.88 m  
AREA: 1.60 m<sup>2</sup> • PERIMETER: 5.46 m



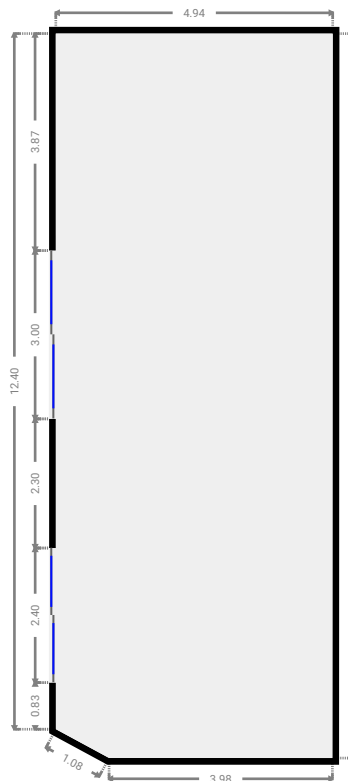
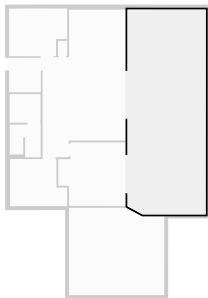
▼ **Other**  
Ground Floor

WIDTH: 0.98 m • LENGTH: 2.06 m  
AREA: 2.01 m<sup>2</sup> • PERIMETER: 6.07 m



▼ **Entertainment area**  
Ground Floor

WIDTH: 4.94 m • LENGTH: 12.92 m  
AREA: 63.47 m<sup>2</sup> • PERIMETER: 35.31 m



FLOORS: 1

▼ **Garage**  
Ground Floor

WIDTH: 6.01 m • LENGTH: 5.50 m  
AREA: 32.00 m<sup>2</sup> • PERIMETER: 22.60 m

