

6/95 Pennyquick Street

SUBMITTED BY

Ray White Rockhampton Casey
stockers@cqoz.com

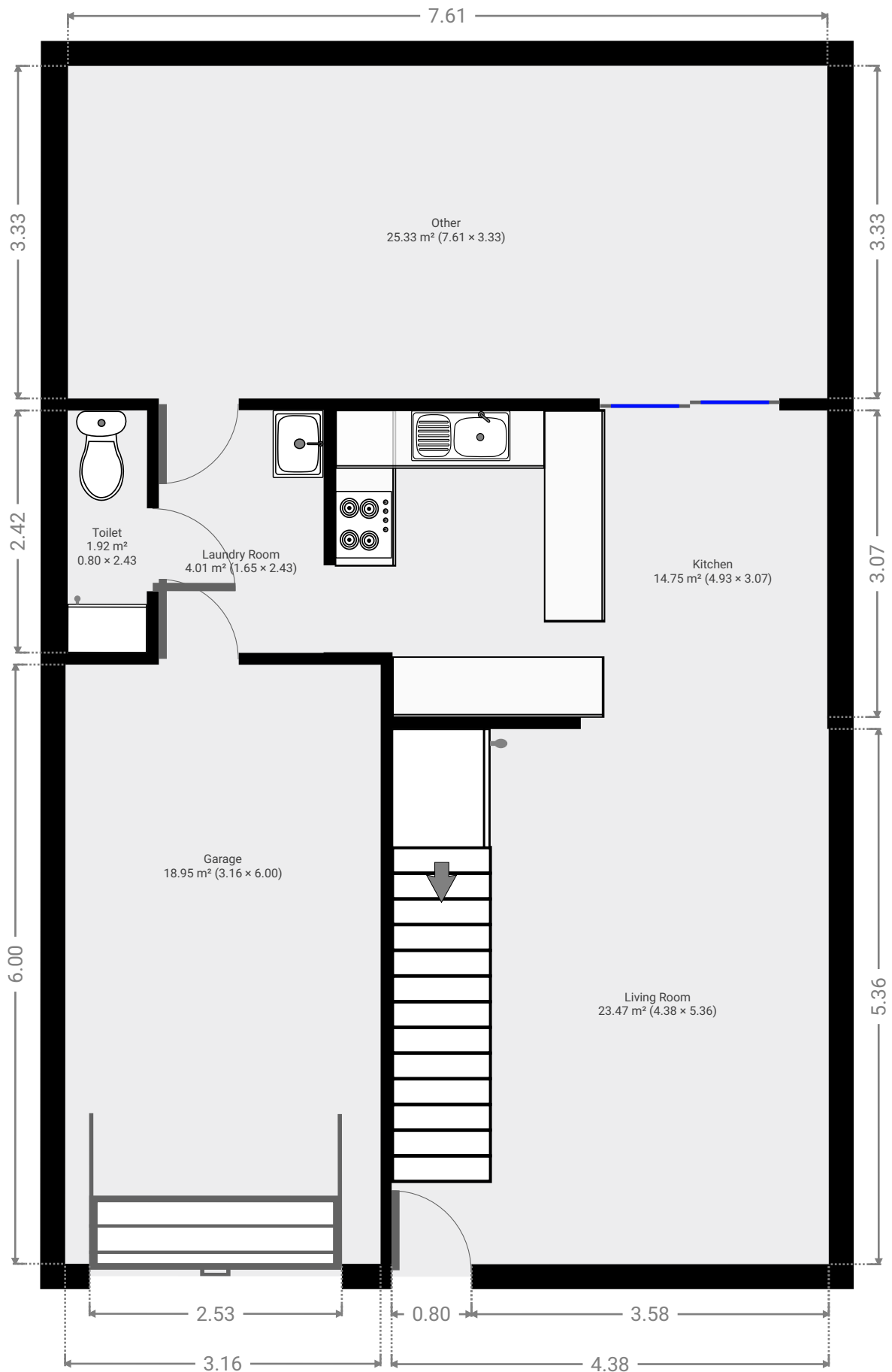
CREATED ON

2022-02-07

Floors

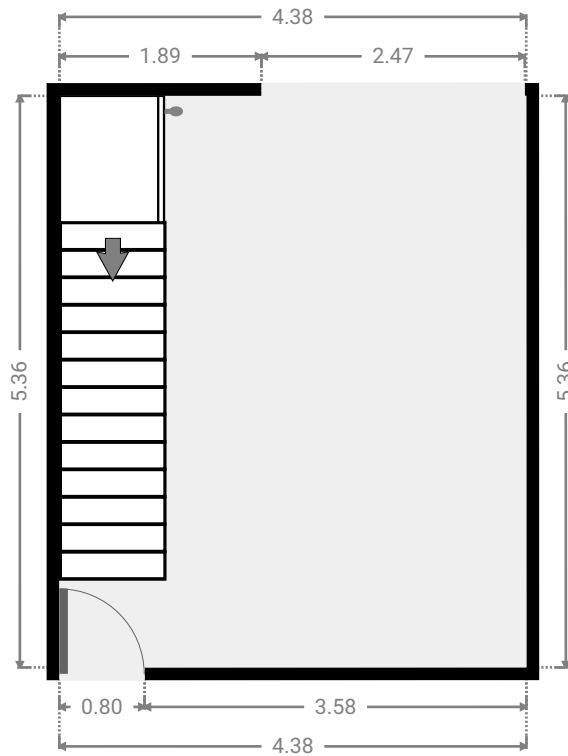
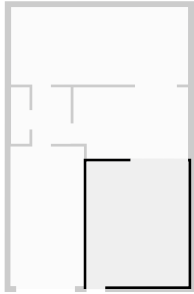
2

▼ Ground Floor



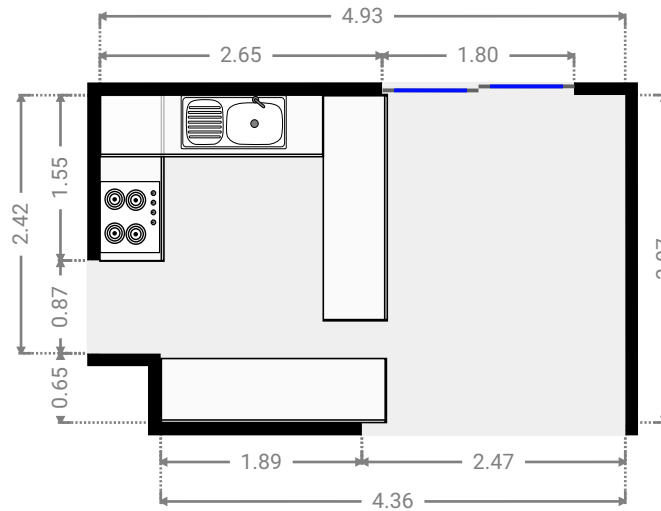
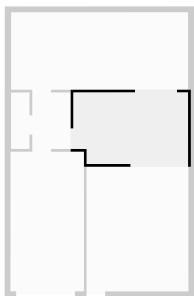
▼ **Living Room**
Ground Floor

WIDTH: 4.38 m • LENGTH: 5.36 m
AREA: 23.47 m² • PERIMETER: 19.48 m



▼ **Kitchen**
Ground Floor

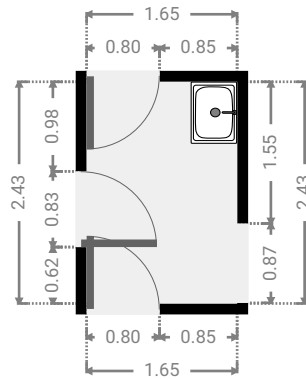
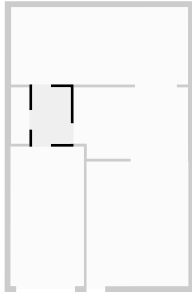
WIDTH: 4.93 m • LENGTH: 3.07 m
AREA: 14.75 m² • PERIMETER: 15.99 m



FLOORS: 2

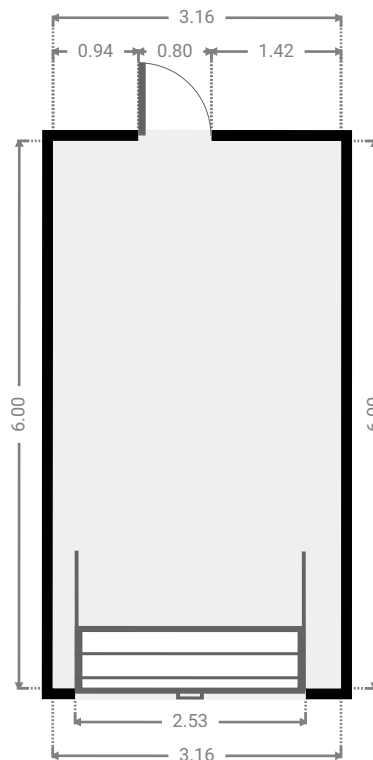
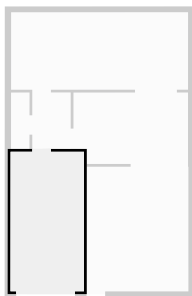
▼ **Laundry Room**
Ground Floor

WIDTH: 1.65 m • LENGTH: 2.43 m
AREA: 4.01 m² • PERIMETER: 8.16 m



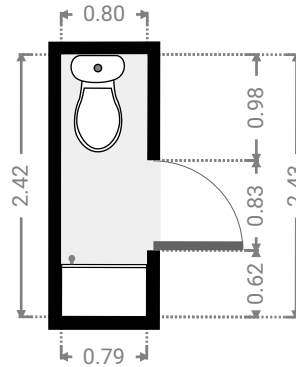
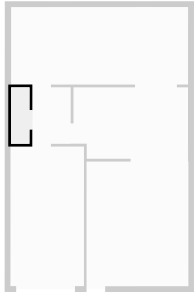
▼ **Garage**
Ground Floor

WIDTH: 3.16 m • LENGTH: 6.00 m
AREA: 18.95 m² • PERIMETER: 18.32 m



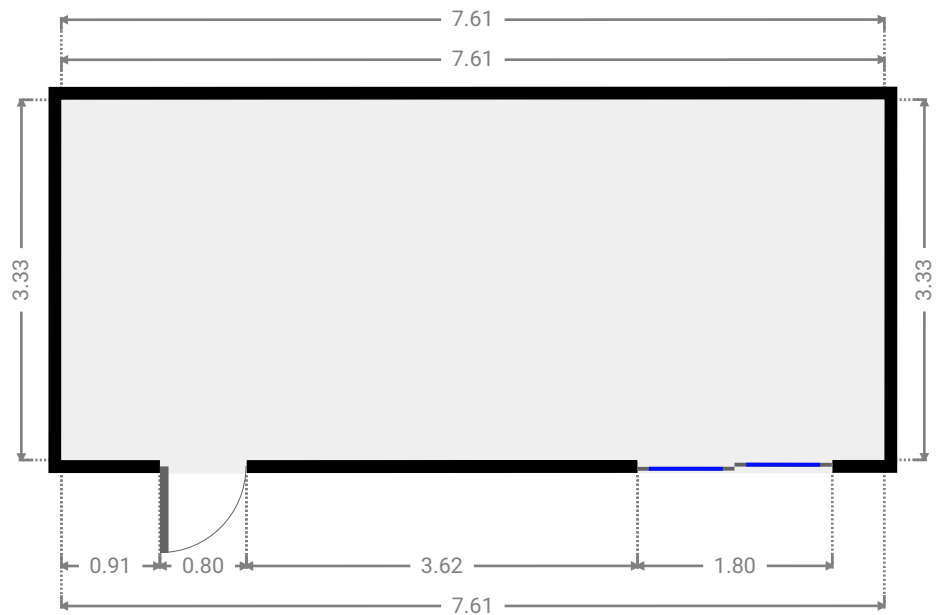
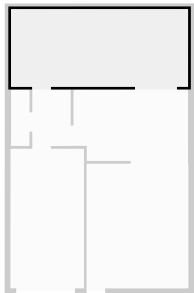
▼ **Toilet**
Ground Floor

WIDTH: 0.80 m • LENGTH: 2.43 m
AREA: 1.92 m² • PERIMETER: 6.44 m

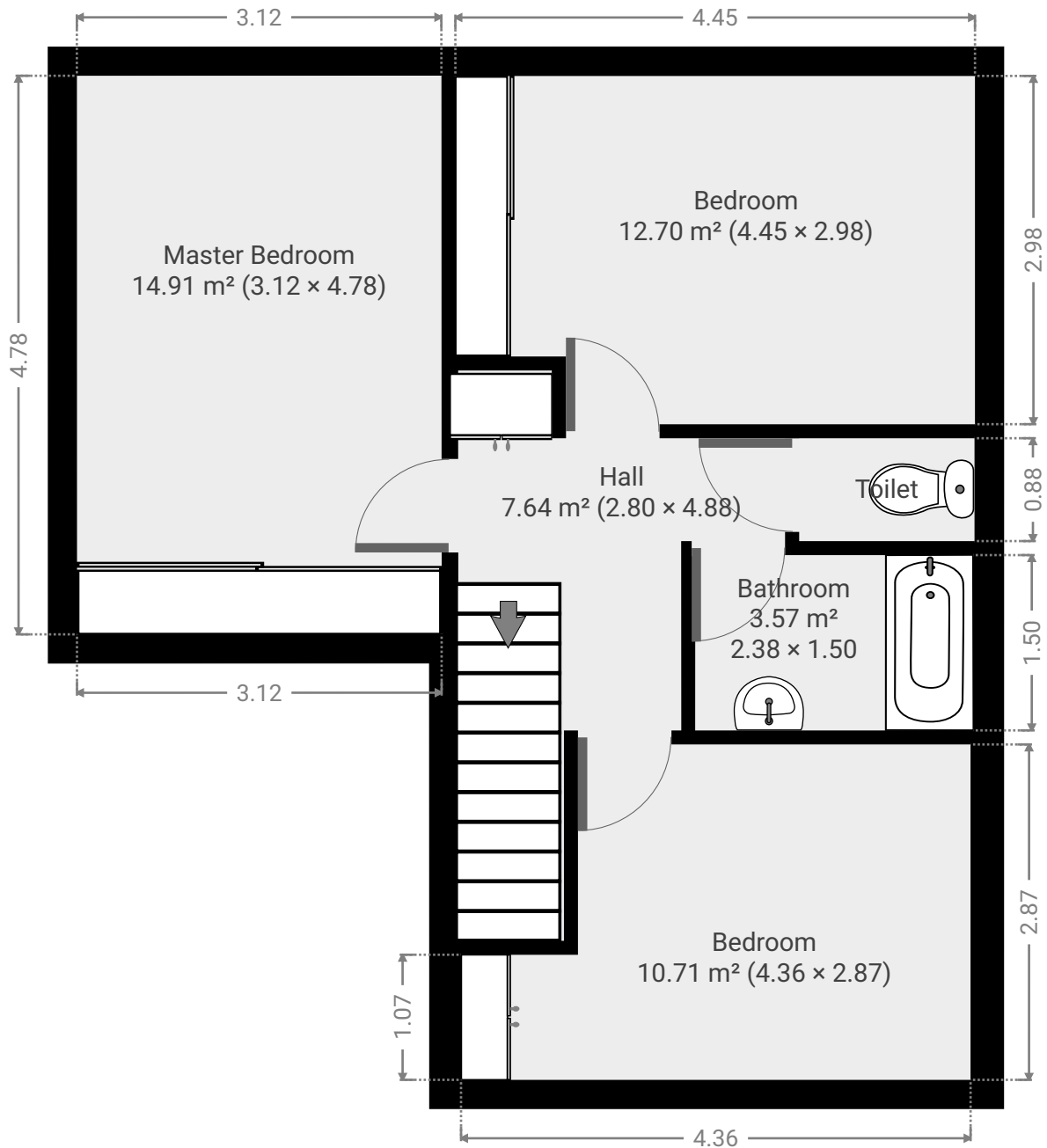


▼ **Other**
Ground Floor

WIDTH: 7.61 m • LENGTH: 3.33 m
AREA: 25.33 m² • PERIMETER: 21.88 m

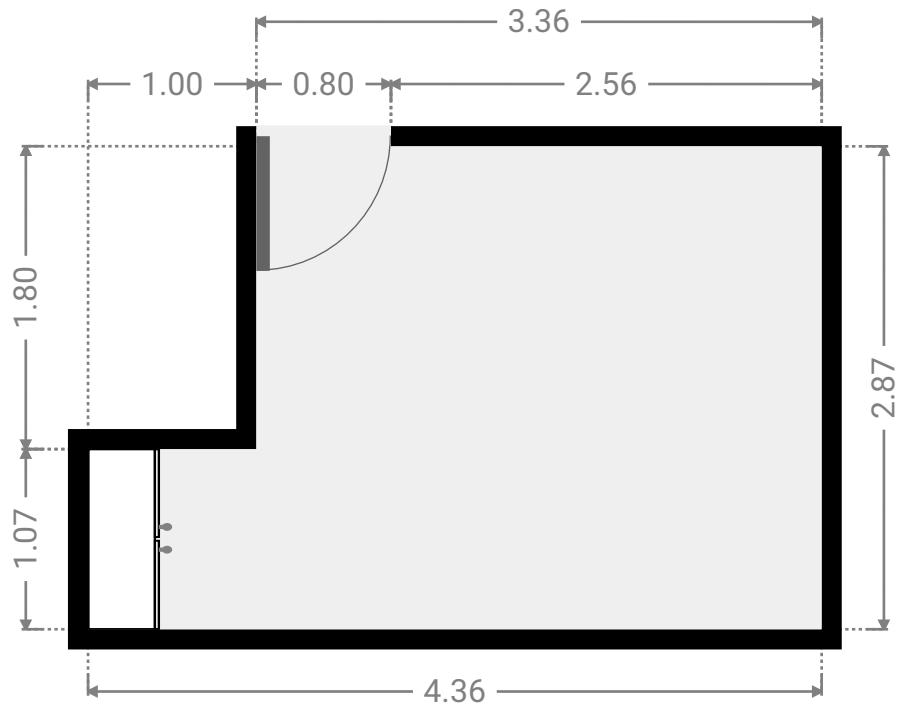
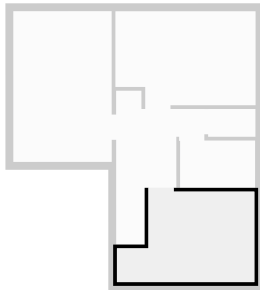


▼ 1st Floor



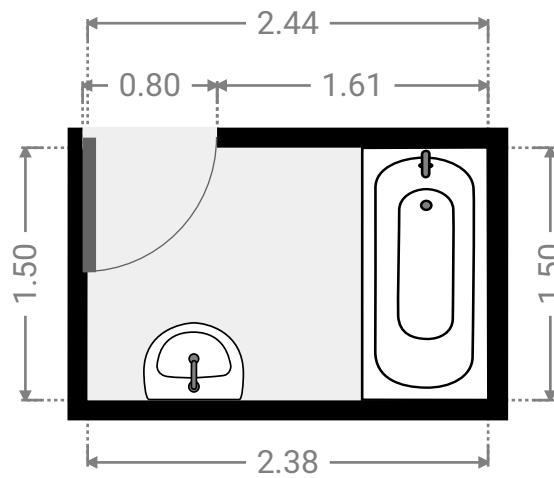
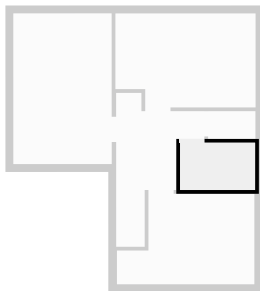
▼ **Bedroom**
1st Floor

WIDTH: 4.36 m • LENGTH: 2.87 m
AREA: 10.71 m² • PERIMETER: 14.46 m



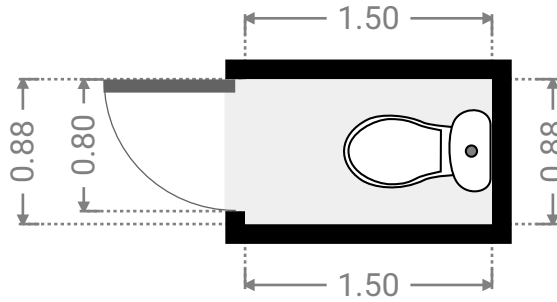
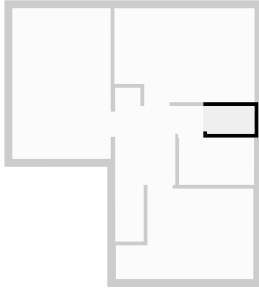
▼ **Bathroom**
1st Floor

WIDTH: 2.38 m • LENGTH: 1.50 m
AREA: 3.57 m² • PERIMETER: 7.76 m



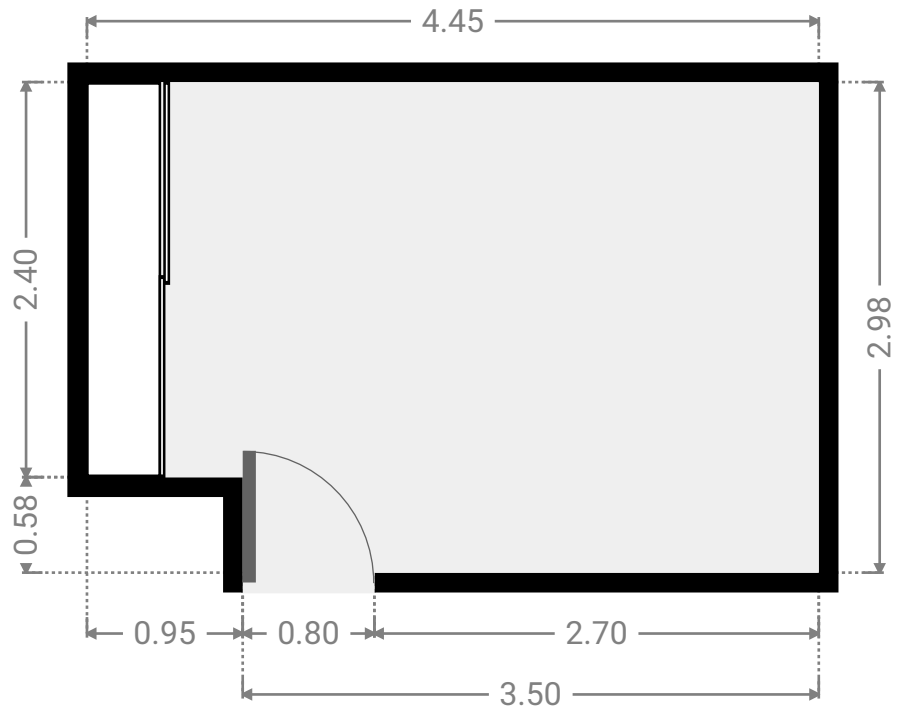
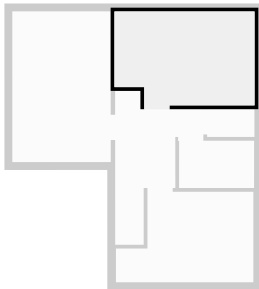
▼ **Toilet**
1st Floor

WIDTH: 1.50 m • LENGTH: 0.88 m
AREA: 1.32 m² • PERIMETER: 4.76 m



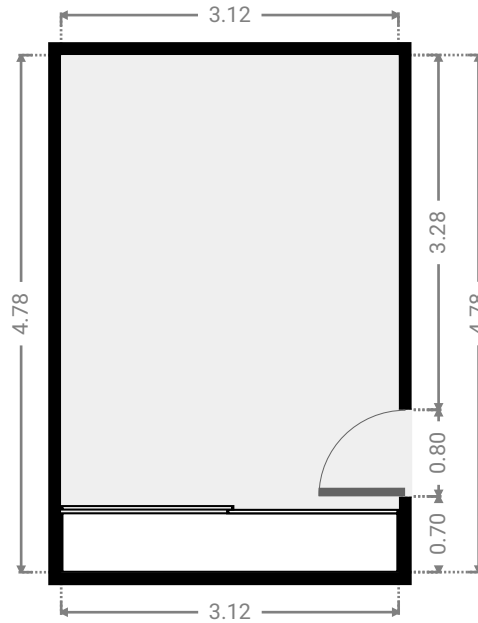
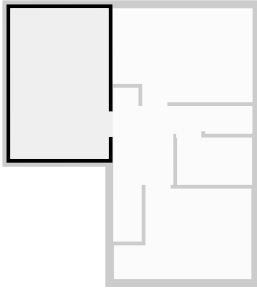
▼ **Bedroom**
1st Floor

WIDTH: 4.57 m • LENGTH: 2.98 m
AREA: 12.70 m² • PERIMETER: 14.85 m



▼ **Master Bedroom**
1st Floor

WIDTH: 3.12 m • LENGTH: 4.78 m
AREA: 14.91 m² • PERIMETER: 15.80 m



▼ **Hall**
1st Floor

WIDTH: 2.74 m • LENGTH: 4.88 m
AREA: 7.64 m² • PERIMETER: 15.35 m

