

59 Fitzpatrick STREET

SUBMITTED BY

Ray White Rockhampton Casey
stockers@cqoz.com

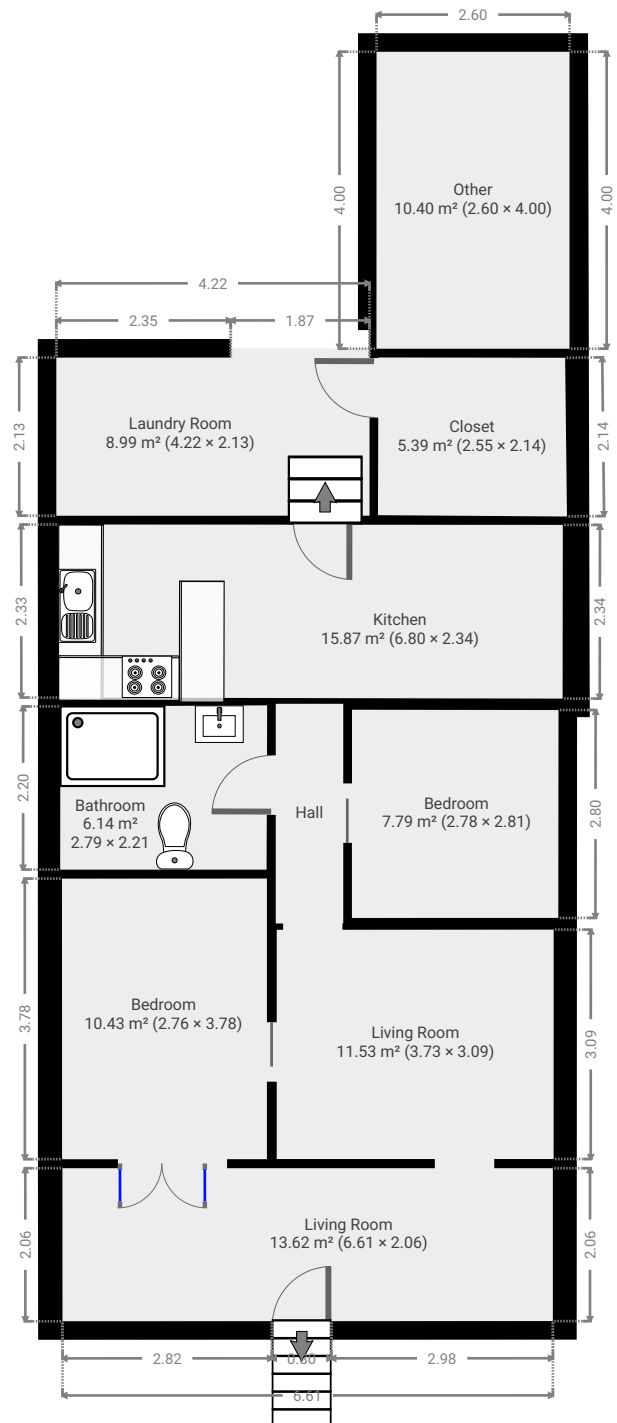
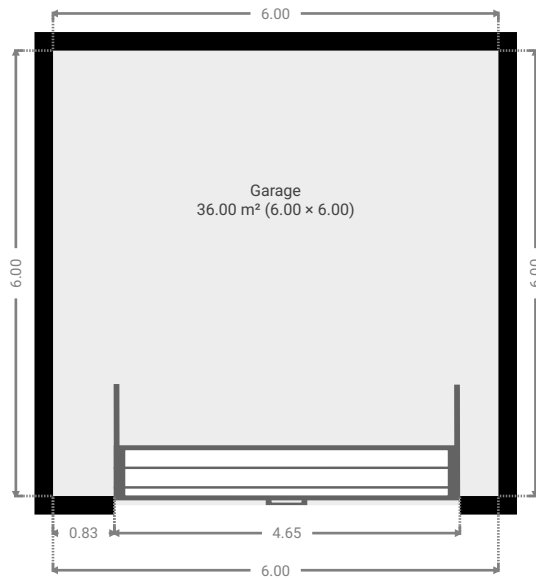
CREATED ON

2022-08-31

Floors

1

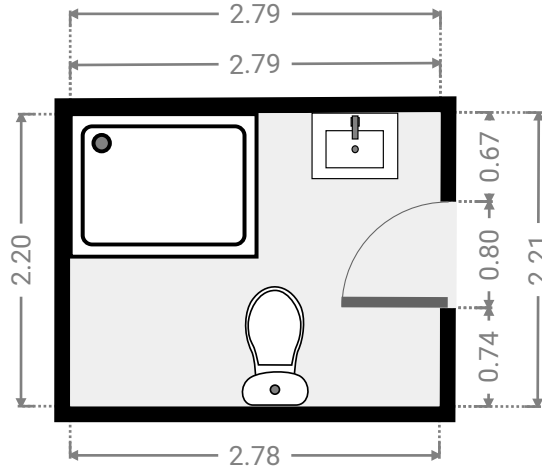
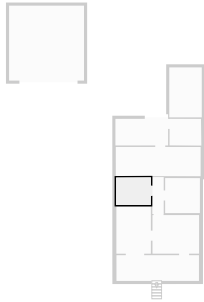
▼ Ground Floor



FLOORS: 1

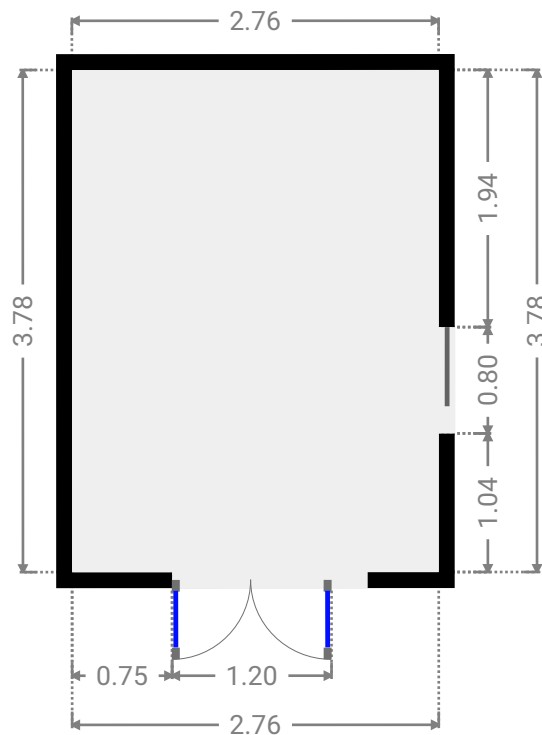
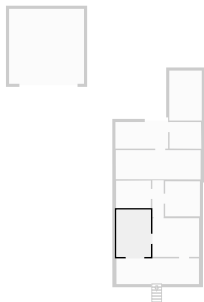
▼ **Bathroom**
Ground Floor

WIDTH: 2.79 m • LENGTH: 2.21 m
AREA: 6.14 m² • PERIMETER: 9.98 m



▼ **Bedroom**
Ground Floor

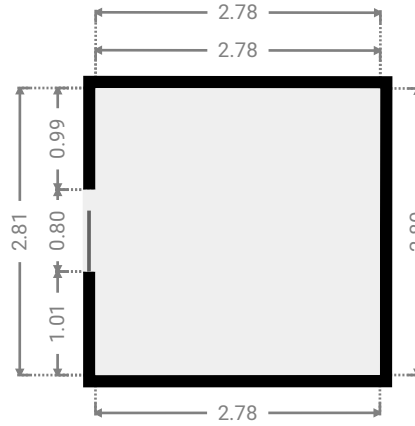
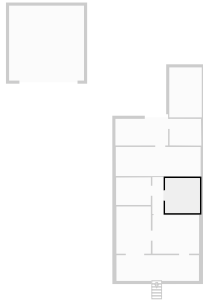
WIDTH: 2.76 m • LENGTH: 3.78 m
AREA: 10.43 m² • PERIMETER: 13.08 m



FLOORS: 1

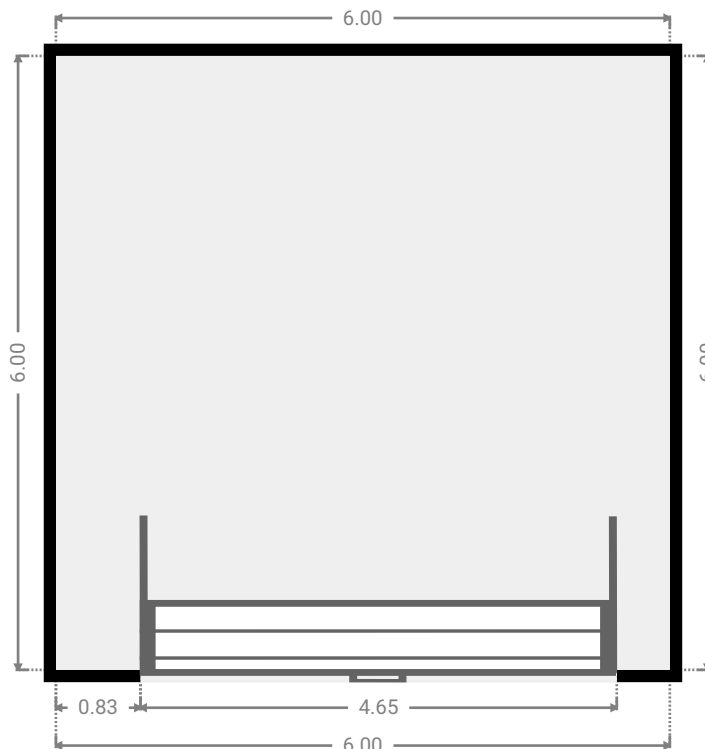
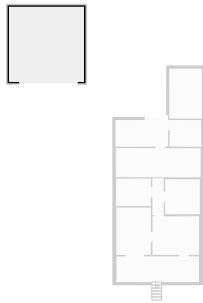
▼ **Bedroom**
Ground Floor

WIDTH: 2.78 m • LENGTH: 2.81 m
AREA: 7.79 m² • PERIMETER: 11.17 m



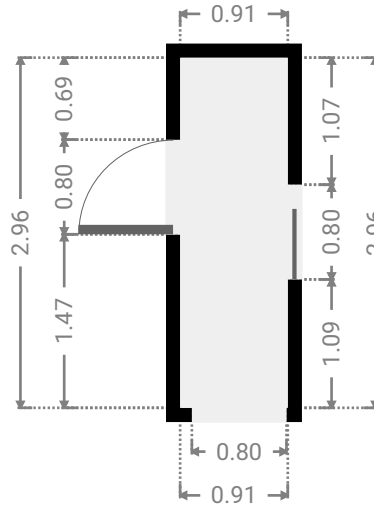
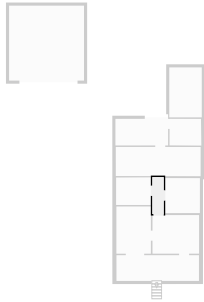
▼ **Garage**
Ground Floor

WIDTH: 6.00 m • LENGTH: 6.00 m
AREA: 36.00 m² • PERIMETER: 24.00 m



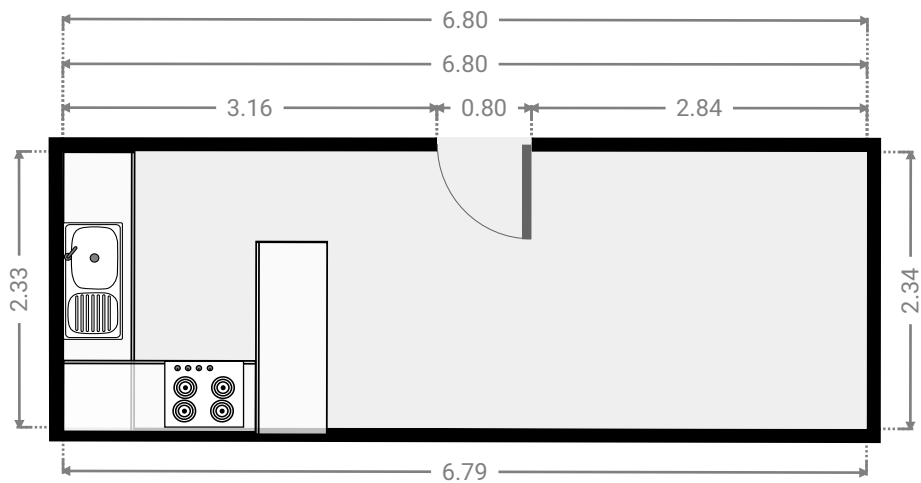
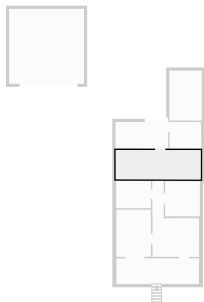
▼ **Hall**
Ground Floor

WIDTH: 0.91 m • LENGTH: 2.96 m
AREA: 2.69 m² • PERIMETER: 7.74 m



▼ **Kitchen**
Ground Floor

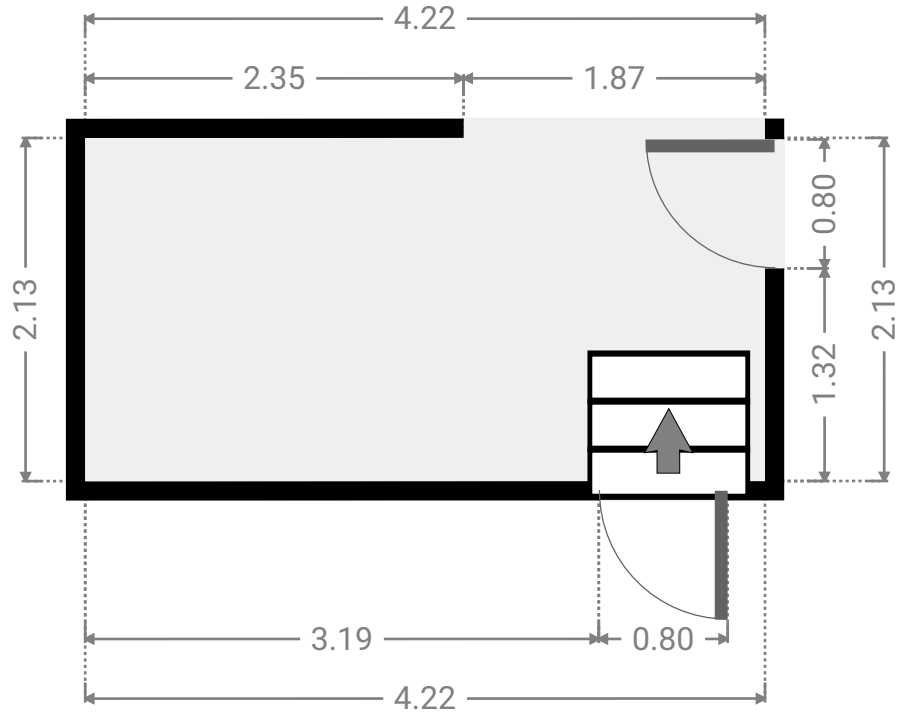
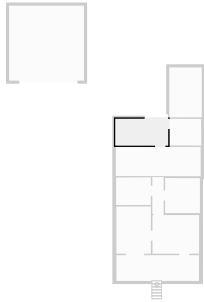
WIDTH: 6.80 m • LENGTH: 2.34 m
AREA: 15.87 m² • PERIMETER: 18.26 m



FLOORS: 1

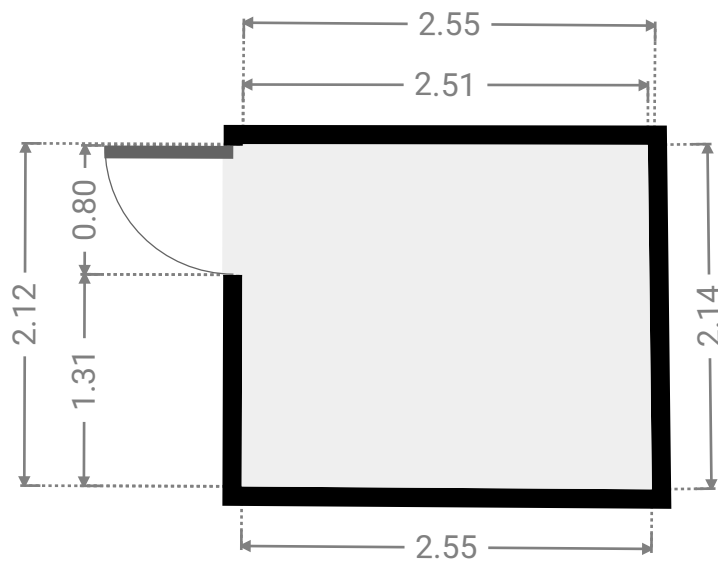
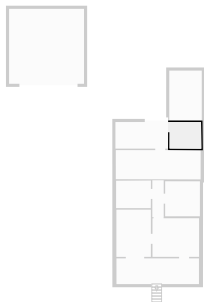
▼ **Laundry Room**
Ground Floor

WIDTH: 4.22 m • LENGTH: 2.13 m
AREA: 8.99 m² • PERIMETER: 12.70 m



▼ **Closet**
Ground Floor

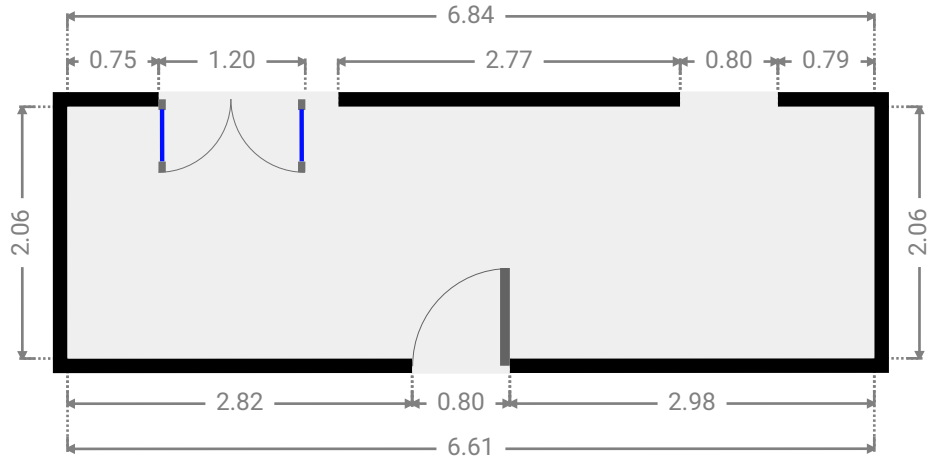
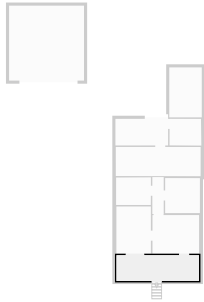
WIDTH: 2.55 m • LENGTH: 2.14 m
AREA: 5.39 m² • PERIMETER: 9.32 m



FLOORS: 1

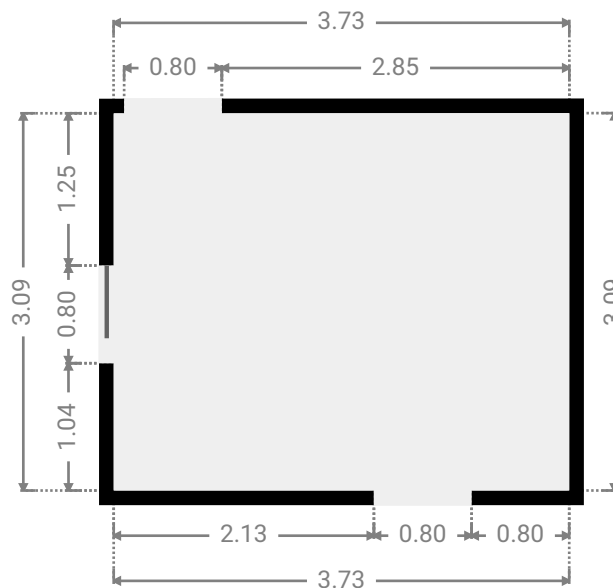
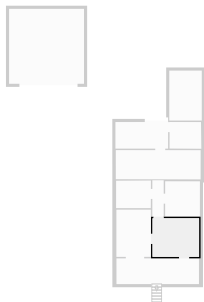
▼ Living Room
Ground Floor

WIDTH: 6.61 m • LENGTH: 2.06 m
AREA: 13.62 m² • PERIMETER: 17.34 m



▼ Living Room
Ground Floor

WIDTH: 3.73 m • LENGTH: 3.09 m
AREA: 11.53 m² • PERIMETER: 13.64 m



FLOORS: 1

▼ Other
Ground Floor

WIDTH: 2.60 m • LENGTH: 4.00 m
AREA: 10.40 m² • PERIMETER: 13.20 m

