

# 59 Belmont Road

**SUBMITTED BY**

Ray White Rockhampton Casey  
stockers@cqoz.com

---

**CREATED ON**

2022-03-30

---

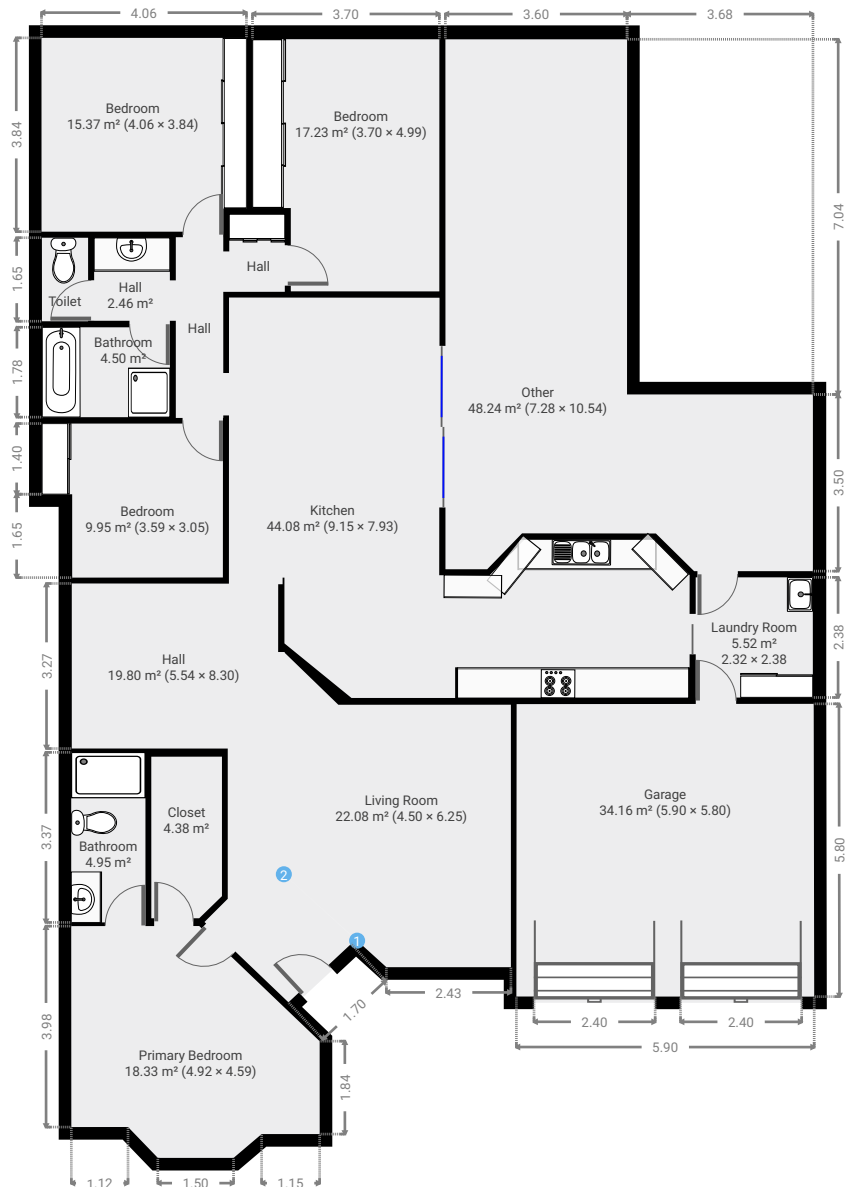
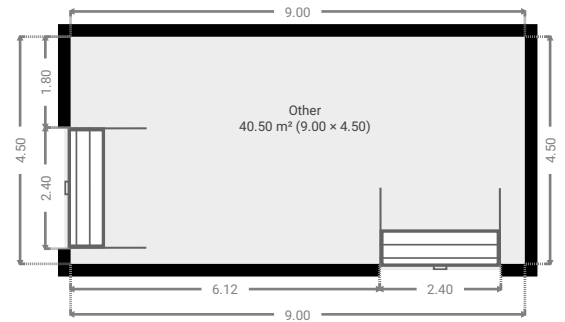
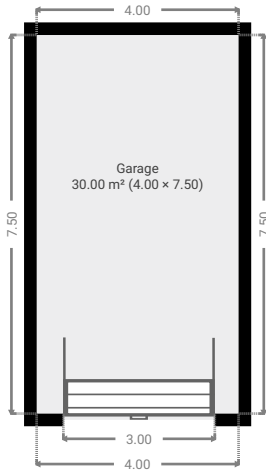
**Floors**

1

---

FLOORS: 1

▼ Ground Floor

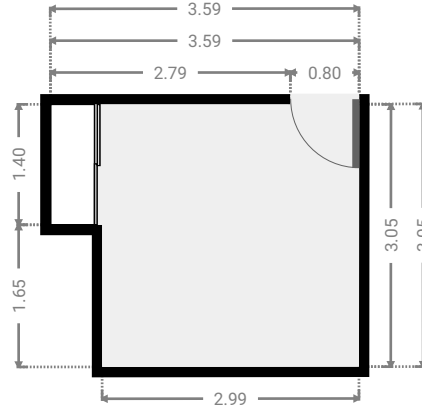
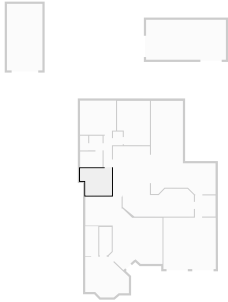


THIS FLOORPLAN IS PROVIDED WITHOUT WARRANTY OF ANY KIND. SENSOPIA DISCLAIMS ANY WARRANTY INCLUDING, WITHOUT LIMITATION, SATISFACTORY QUALITY OR ACCURACY OF DIMENSIONS.

FLOORS: 1

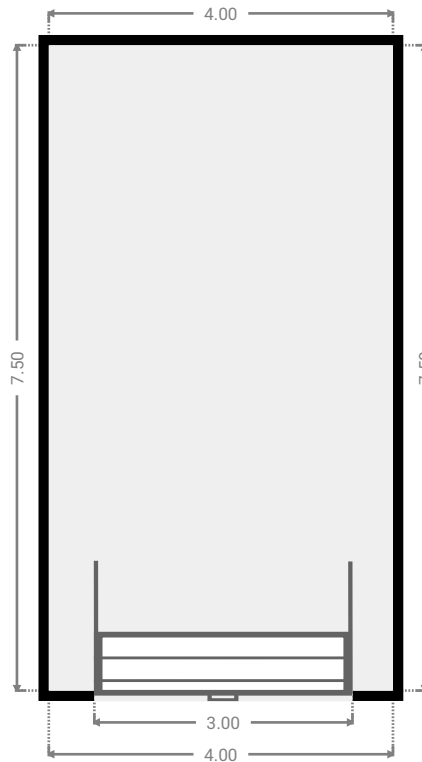
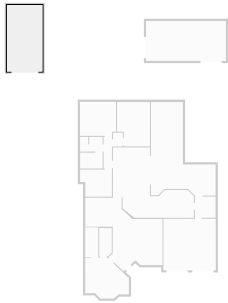
▼ **Bedroom**  
Ground Floor

WIDTH: 3.59 m • LENGTH: 3.05 m  
AREA: 9.95 m<sup>2</sup> • PERIMETER: 13.27 m



▼ **Garage**  
Ground Floor

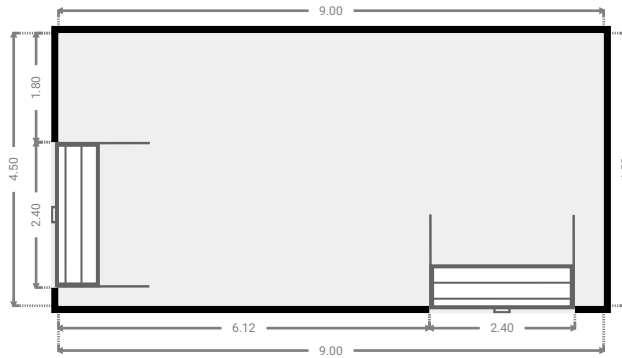
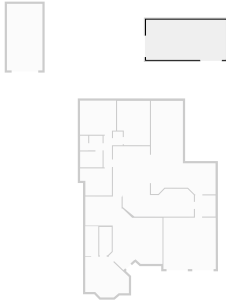
WIDTH: 4.00 m • LENGTH: 7.50 m  
AREA: 30.00 m<sup>2</sup> • PERIMETER: 23.00 m



FLOORS: 1

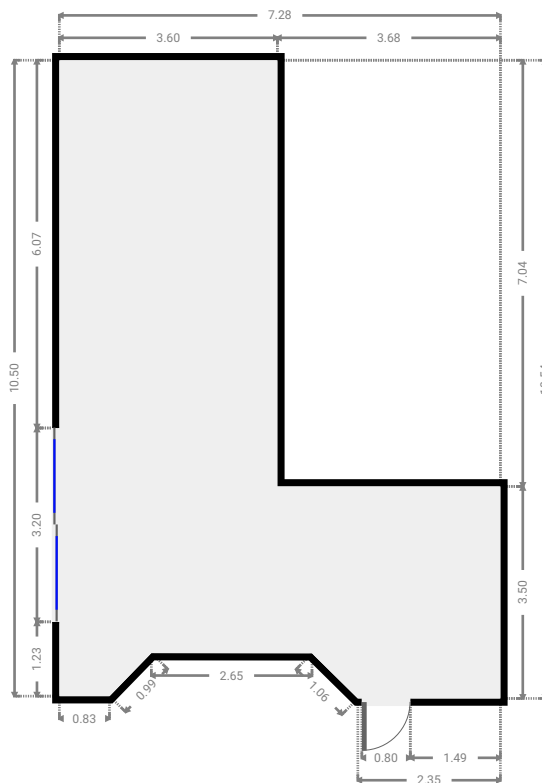
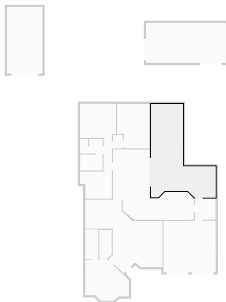
▼ Other  
Ground Floor

WIDTH: 9.00 m • LENGTH: 4.50 m  
AREA: 40.50 m<sup>2</sup> • PERIMETER: 27.00 m



▼ Other  
Ground Floor

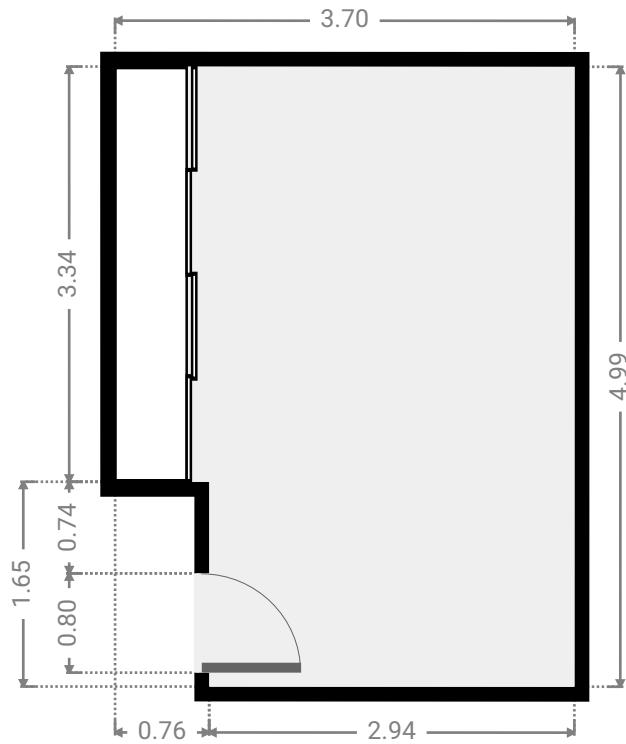
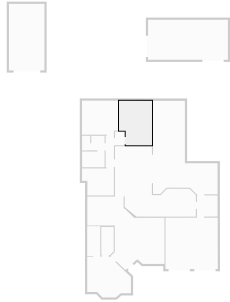
WIDTH: 7.28 m • LENGTH: 10.54 m  
AREA: 48.24 m<sup>2</sup> • PERIMETER: 36.20 m



FLOORS: 1

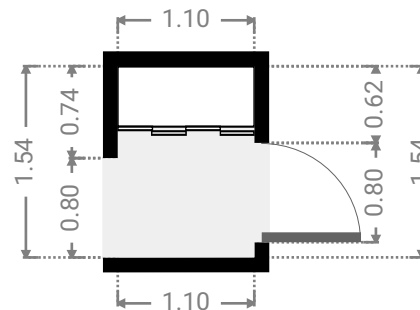
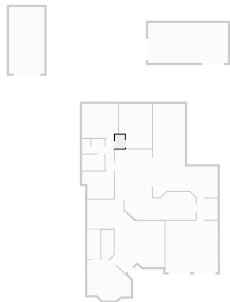
▼ **Bedroom**  
Ground Floor

WIDTH: 3.70 m • LENGTH: 4.99 m  
AREA: 17.23 m<sup>2</sup> • PERIMETER: 17.39 m



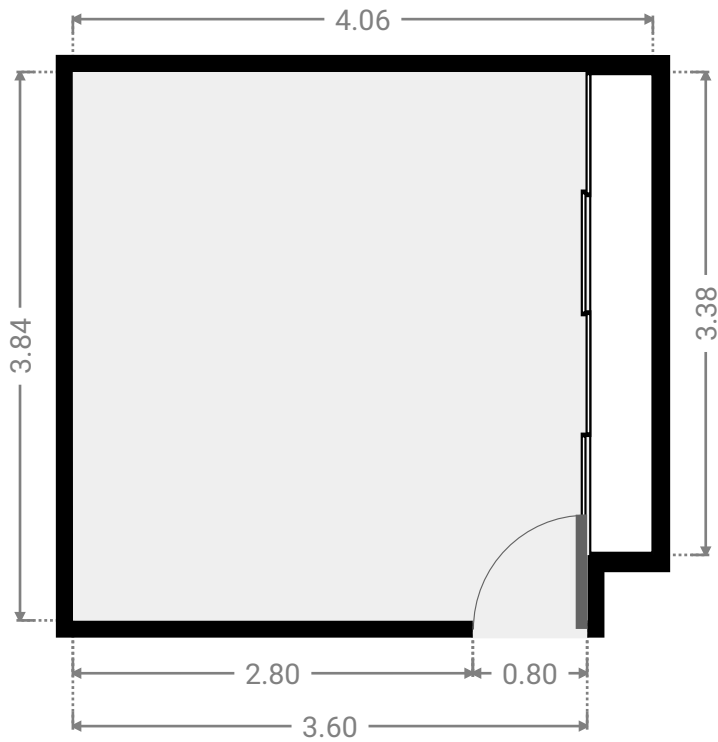
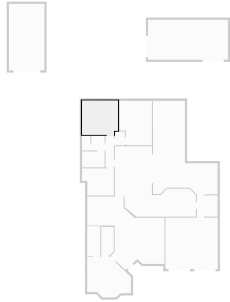
▼ **Hall**  
Ground Floor

WIDTH: 1.10 m • LENGTH: 1.54 m  
AREA: 1.69 m<sup>2</sup> • PERIMETER: 5.28 m



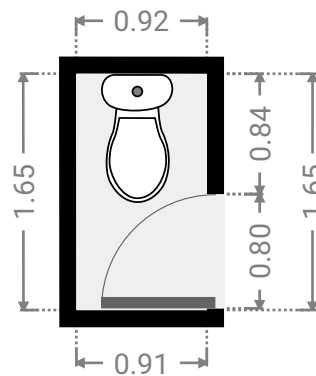
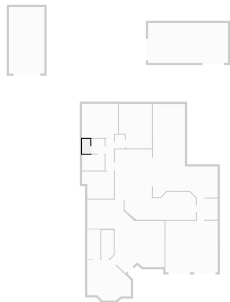
▼ **Bedroom**  
Ground Floor

WIDTH: 4.06 m • LENGTH: 3.84 m  
AREA: 15.37 m<sup>2</sup> • PERIMETER: 15.80 m



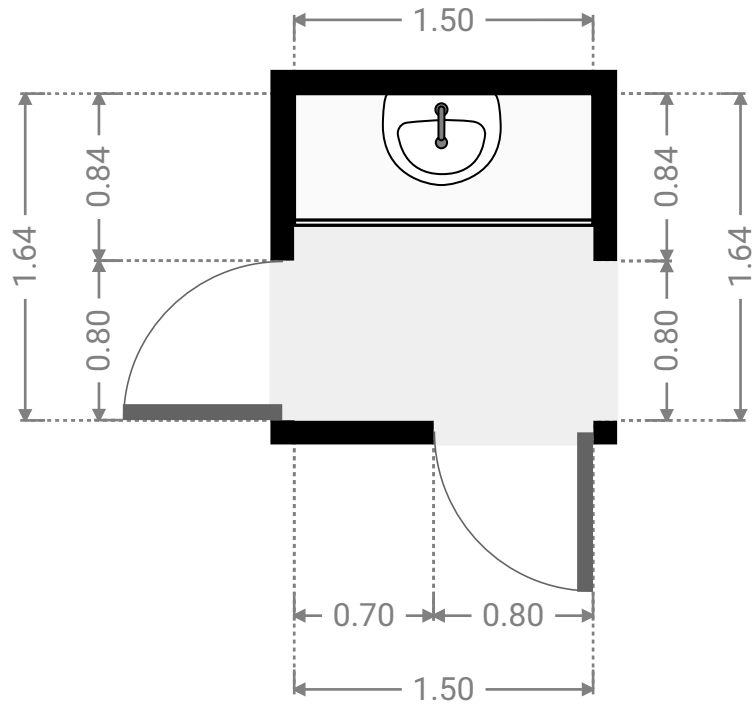
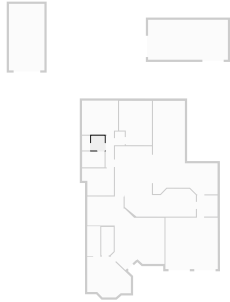
▼ **Toilet**  
Ground Floor

WIDTH: 0.92 m • LENGTH: 1.65 m  
AREA: 1.51 m<sup>2</sup> • PERIMETER: 5.14 m



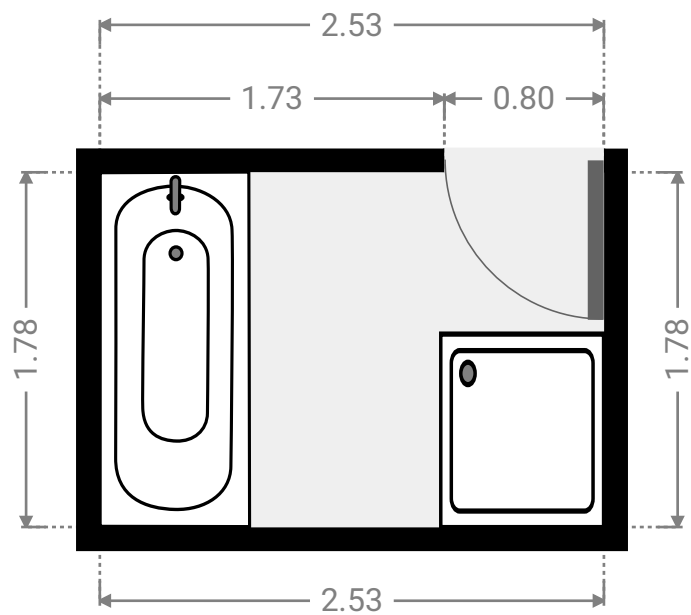
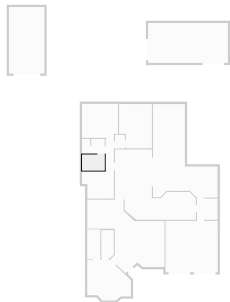
▼ **Hall**  
Ground Floor

WIDTH: 1.50 m • LENGTH: 1.64 m  
AREA: 2.46 m<sup>2</sup> • PERIMETER: 6.28 m



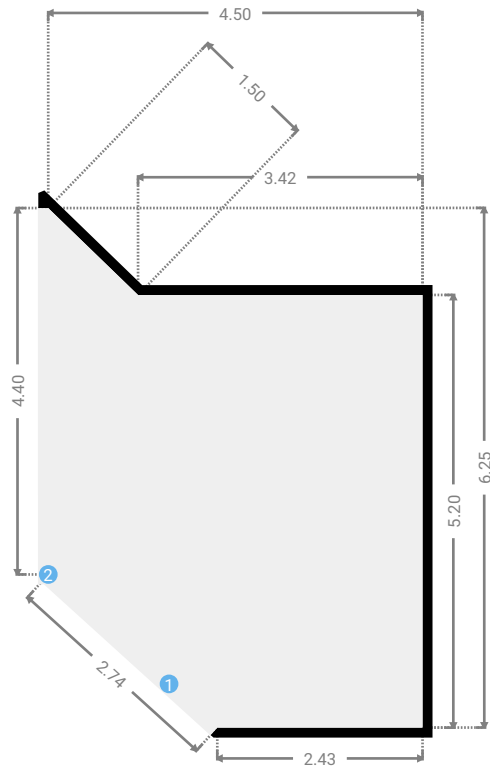
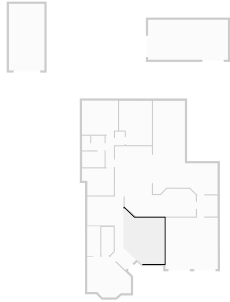
▼ **Bathroom**  
Ground Floor

WIDTH: 2.53 m • LENGTH: 1.78 m  
AREA: 4.50 m<sup>2</sup> • PERIMETER: 8.62 m



▼ **Living Room**  
Ground Floor

WIDTH: 4.50 m • LENGTH: 6.25 m  
AREA: 22.08 m<sup>2</sup> • PERIMETER: 19.73 m



▼ **Living Room/Ground Floor**

**1** OPENING

Height  
0.00 m



**2** OPENING

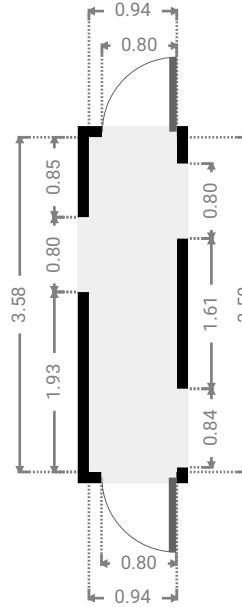
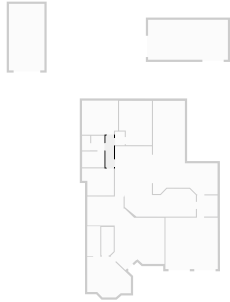
Height  
0.00 m





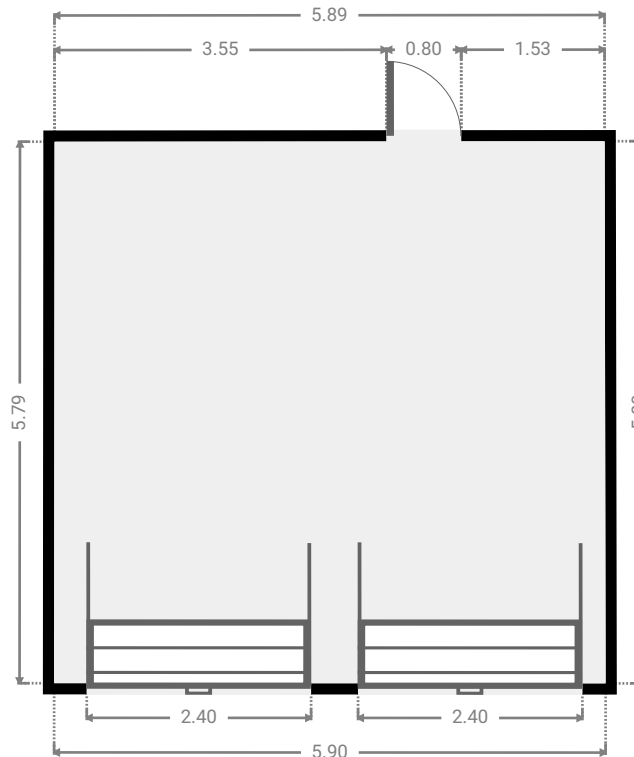
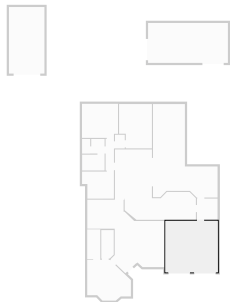
▼ **Hall**  
Ground Floor

WIDTH: 0.94 m • LENGTH: 3.58 m  
AREA: 3.37 m<sup>2</sup> • PERIMETER: 9.04 m



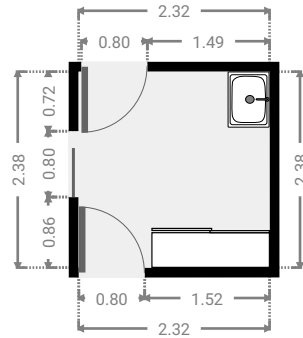
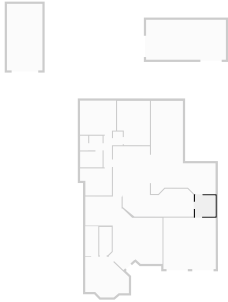
▼ **Garage**  
Ground Floor

WIDTH: 5.90 m • LENGTH: 5.80 m  
AREA: 34.16 m<sup>2</sup> • PERIMETER: 23.38 m



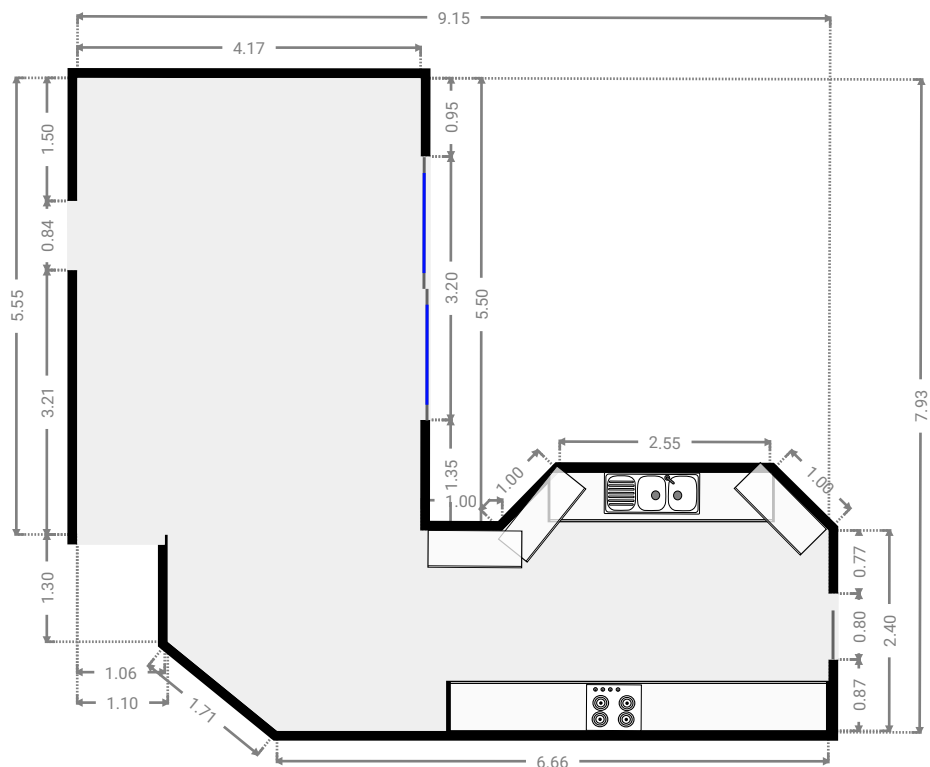
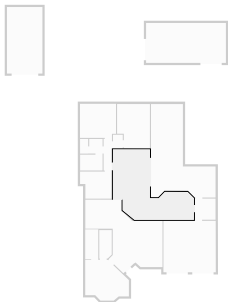
▼ Laundry Room  
Ground Floor

WIDTH: 2.32 m • LENGTH: 2.38 m  
AREA: 5.52 m<sup>2</sup> • PERIMETER: 9.40 m



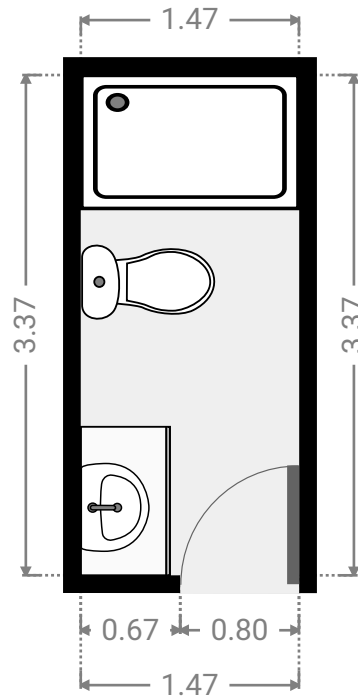
▼ Kitchen  
Ground Floor

WIDTH: 9.15 m • LENGTH: 7.93 m  
AREA: 44.08 m<sup>2</sup> • PERIMETER: 34.01 m



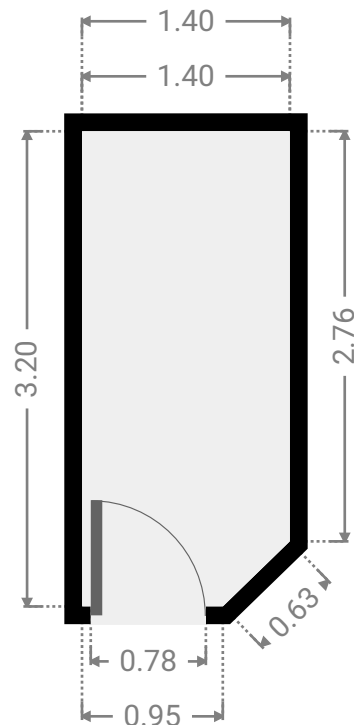
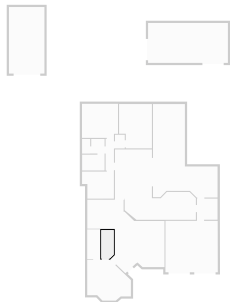
▼ **Bathroom**  
Ground Floor

WIDTH: 1.47 m • LENGTH: 3.37 m  
AREA: 4.95 m<sup>2</sup> • PERIMETER: 9.68 m



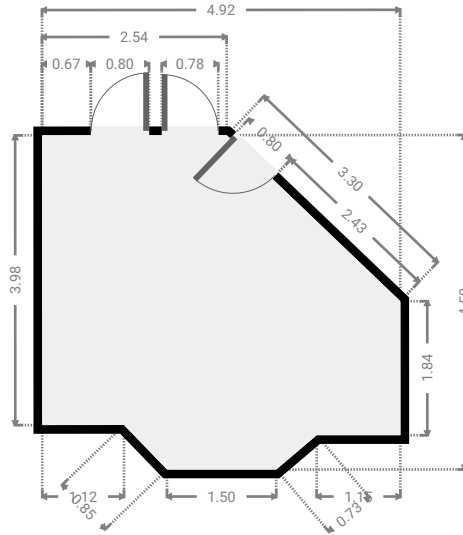
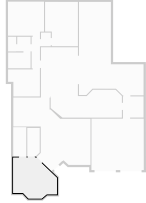
▼ **Closet**  
Ground Floor

WIDTH: 1.40 m • LENGTH: 3.20 m  
AREA: 4.38 m<sup>2</sup> • PERIMETER: 8.94 m



▼ Primary Bedroom  
Ground Floor

WIDTH: 4.92 m • LENGTH: 4.59 m  
AREA: 18.33 m<sup>2</sup> • PERIMETER: 17.01 m



▼ Hall  
Ground Floor

WIDTH: 5.54 m • LENGTH: 8.30 m  
AREA: 19.80 m<sup>2</sup> • PERIMETER: 25.85 m

