

58 Painswick Street

SUBMITTED BY

Ray White Rockhampton Casey
stockers@cqoz.com

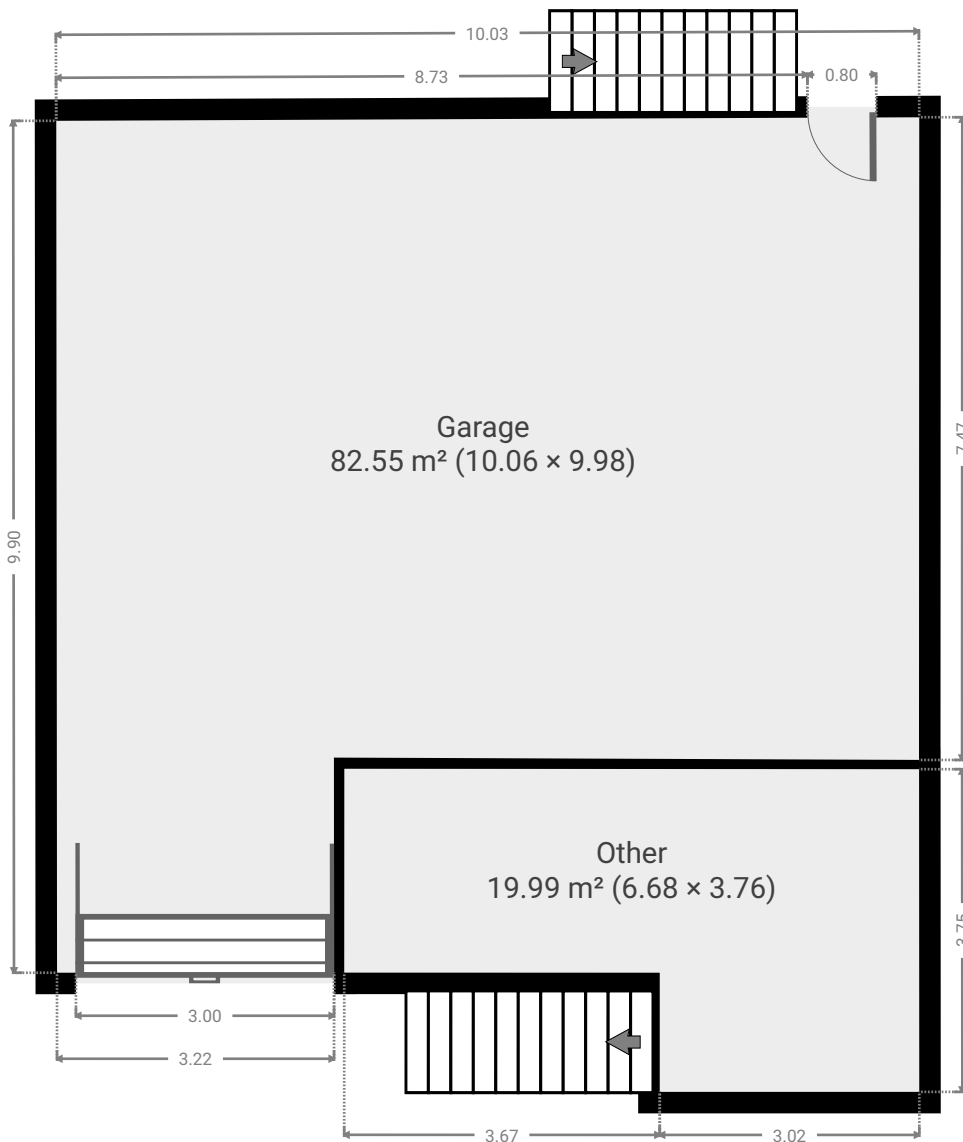
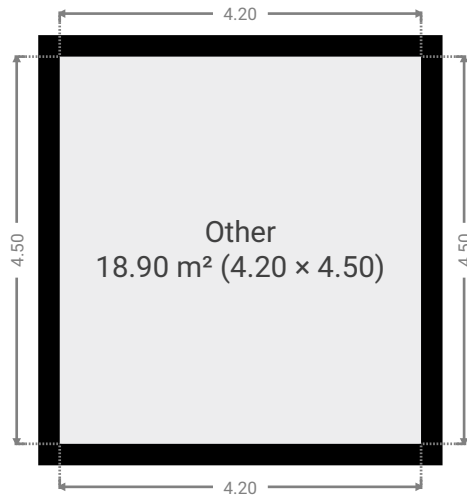
CREATED ON

2022-10-11

Floors

2

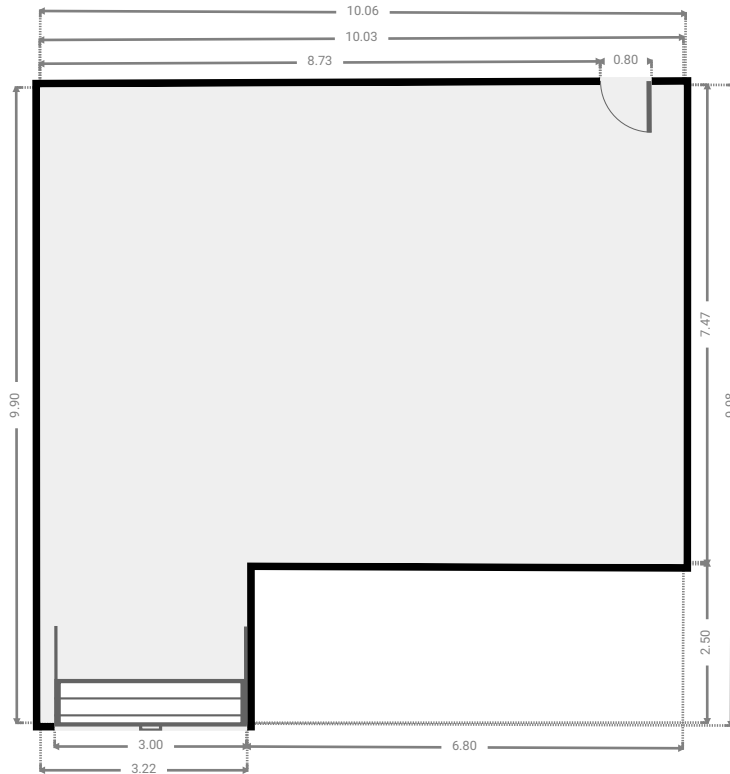
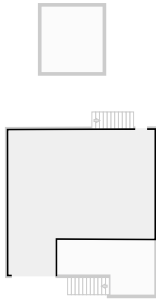
▼ Ground Floor



FLOORS: 2

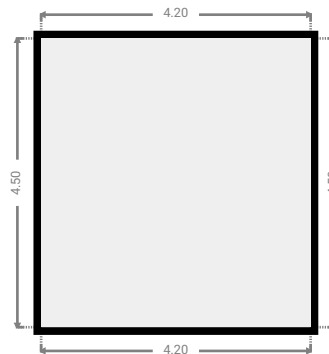
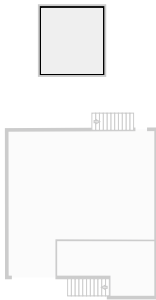
▼ **Garage**
Ground Floor

WIDTH: 10.06 m • LENGTH: 9.98 m
AREA: 82.55 m² • PERIMETER: 39.92 m



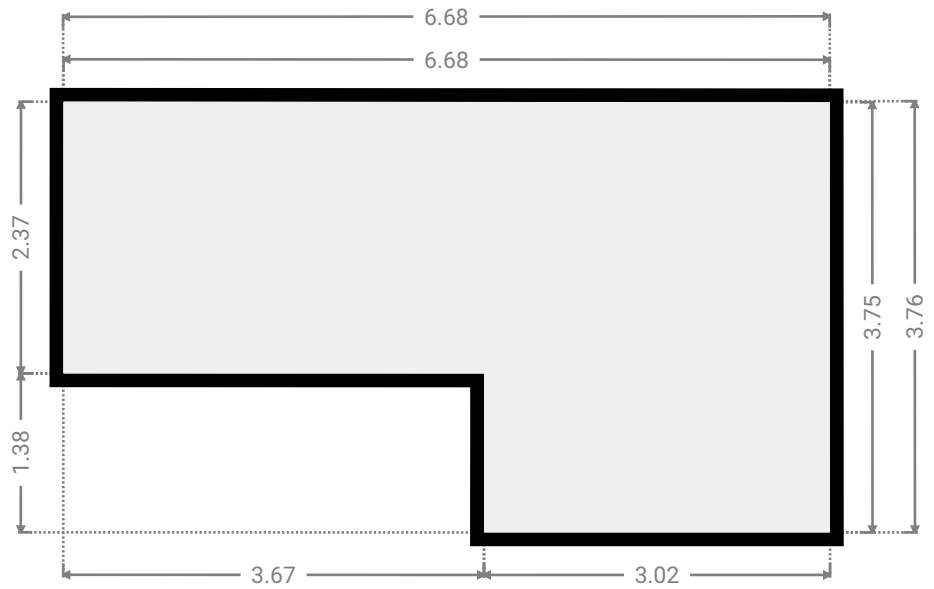
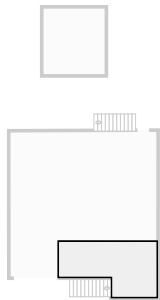
▼ **Other**
Ground Floor

WIDTH: 4.20 m • LENGTH: 4.50 m
AREA: 18.90 m² • PERIMETER: 17.40 m

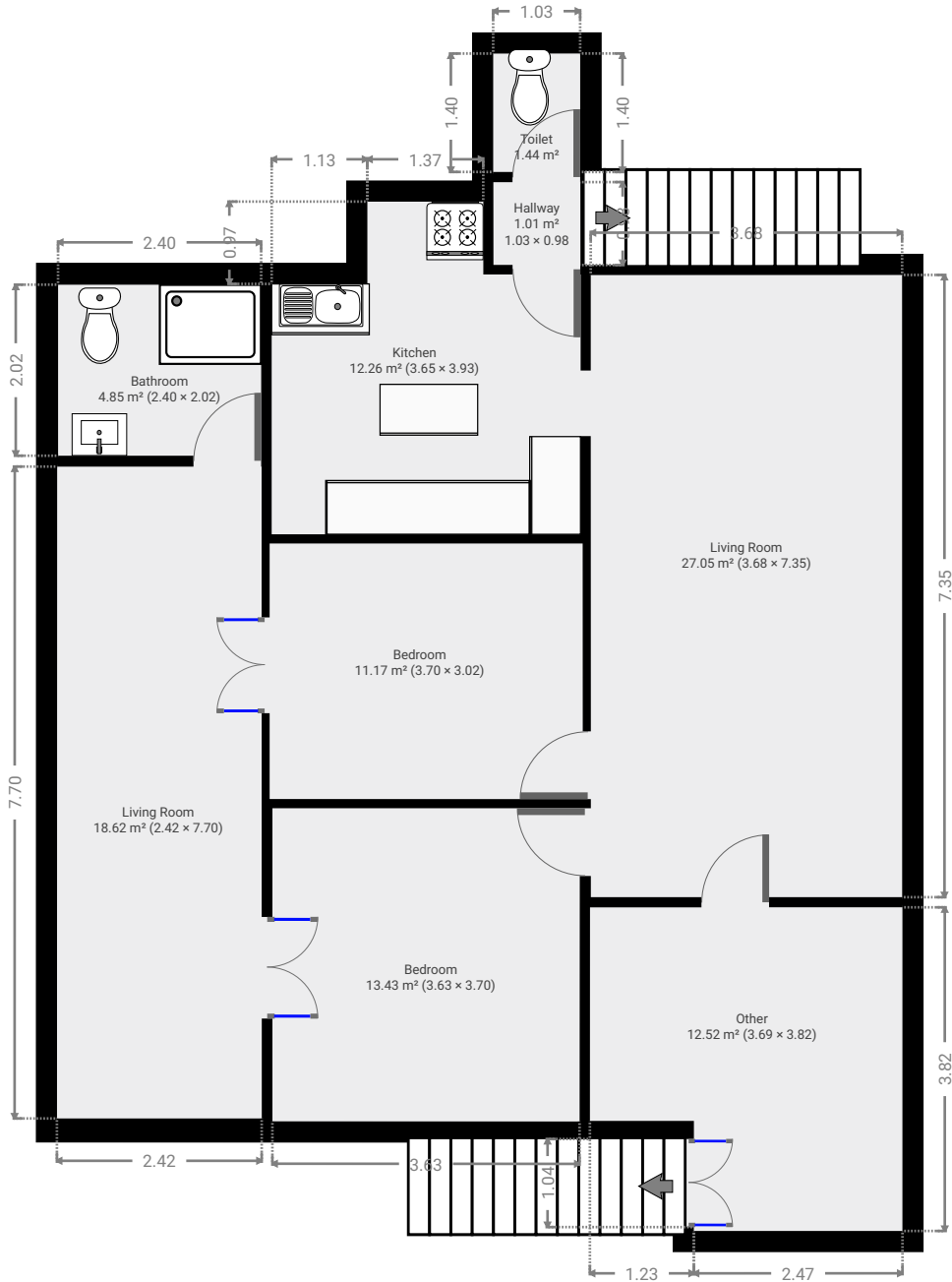


▼ Other
Ground Floor

WIDTH: 6.68 m • LENGTH: 3.76 m
AREA: 19.99 m² • PERIMETER: 20.87 m



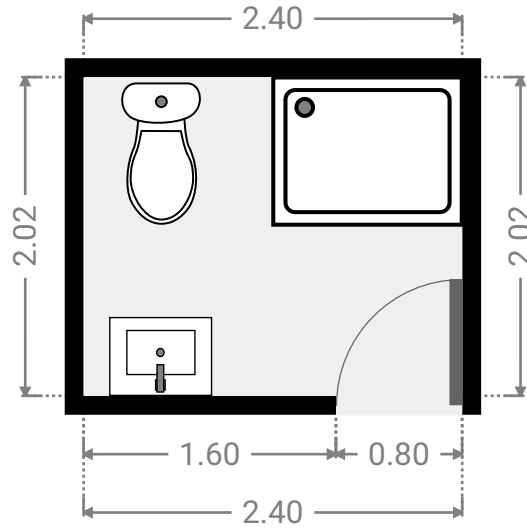
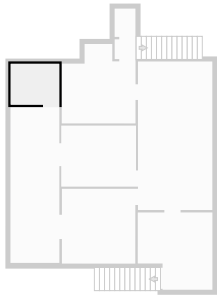
▼ 1st Floor



FLOORS: 2

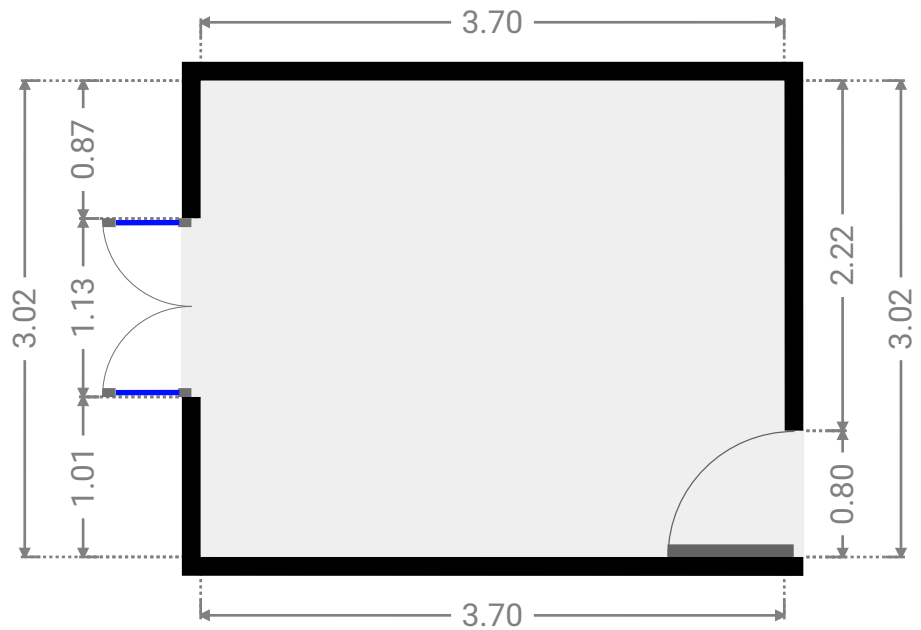
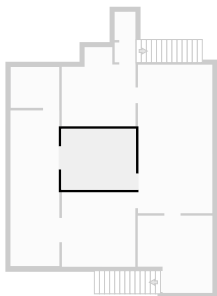
▼ Bathroom
1st Floor

WIDTH: 2.40 m • LENGTH: 2.02 m
AREA: 4.85 m² • PERIMETER: 8.84 m



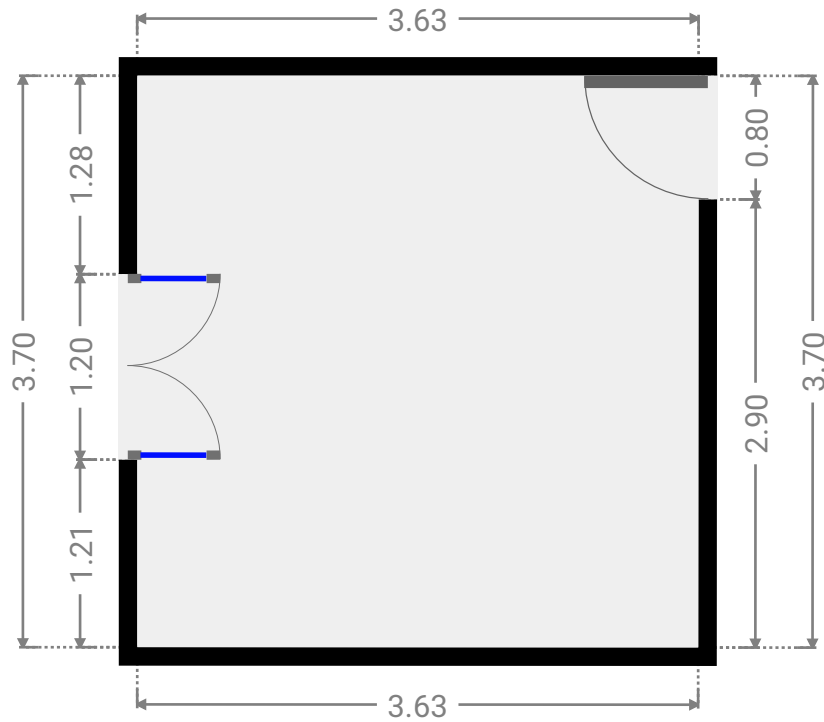
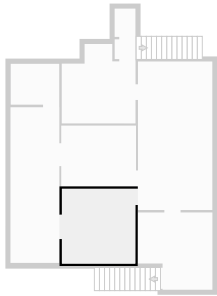
▼ Bedroom
1st Floor

WIDTH: 3.70 m • LENGTH: 3.02 m
AREA: 11.17 m² • PERIMETER: 13.44 m



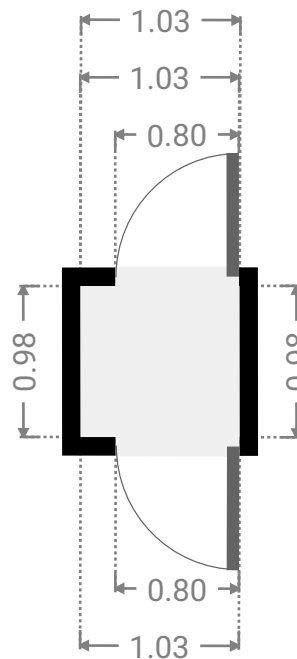
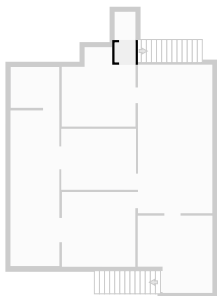
▼ **Bedroom**
1st Floor

WIDTH: 3.63 m • LENGTH: 3.70 m
AREA: 13.43 m² • PERIMETER: 14.66 m



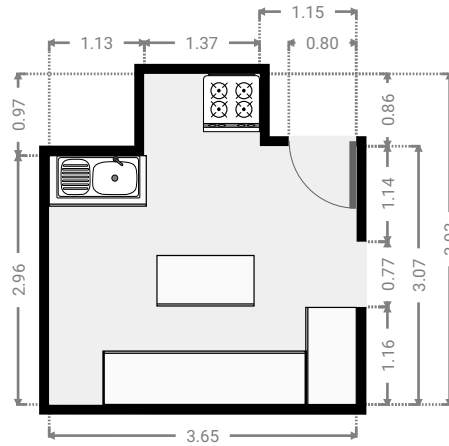
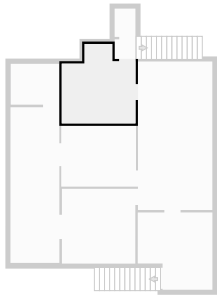
▼ **Hallway**
1st Floor

WIDTH: 1.03 m • LENGTH: 0.98 m
AREA: 1.01 m² • PERIMETER: 4.01 m



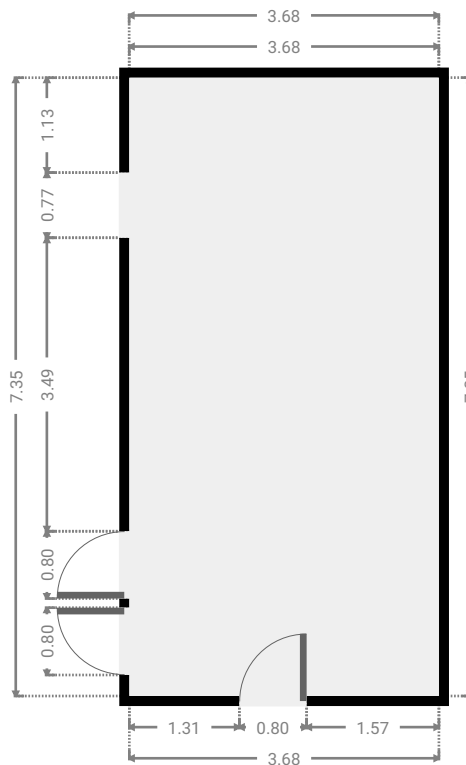
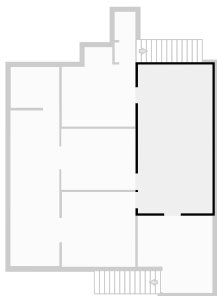
▼ Kitchen
1st Floor

WIDTH: 3.65 m • LENGTH: 3.93 m
AREA: 12.26 m² • PERIMETER: 15.16 m



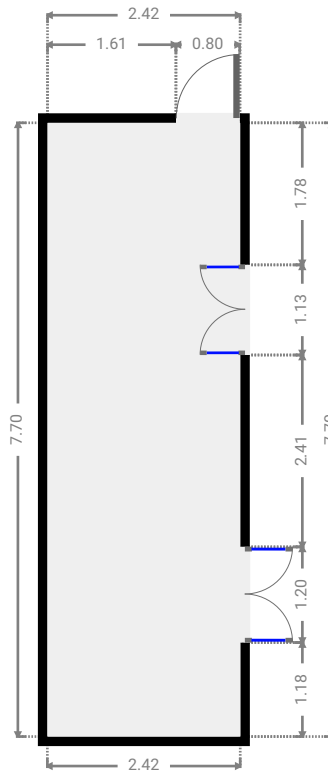
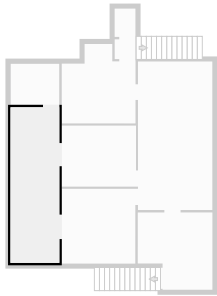
▼ Living Room
1st Floor

WIDTH: 3.68 m • LENGTH: 7.35 m
AREA: 27.05 m² • PERIMETER: 22.06 m



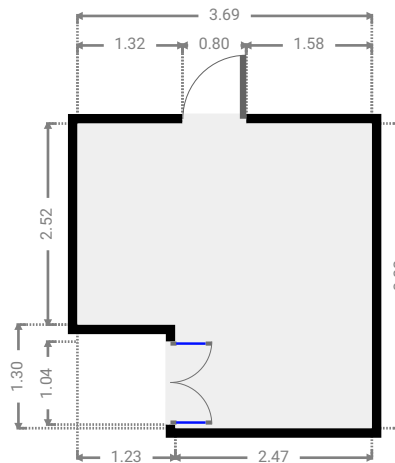
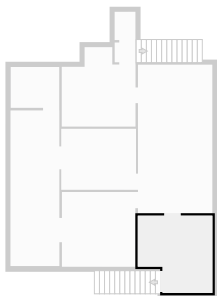
▼ Living Room
1st Floor

WIDTH: 2.42 m • LENGTH: 7.70 m
AREA: 18.62 m² • PERIMETER: 20.24 m



▼ Other
1st Floor

WIDTH: 3.69 m • LENGTH: 3.82 m
AREA: 12.52 m² • PERIMETER: 15.03 m



▼ Toilet
1st Floor

WIDTH: 1.03 m • LENGTH: 1.40 m
AREA: 1.44 m² • PERIMETER: 4.85 m

