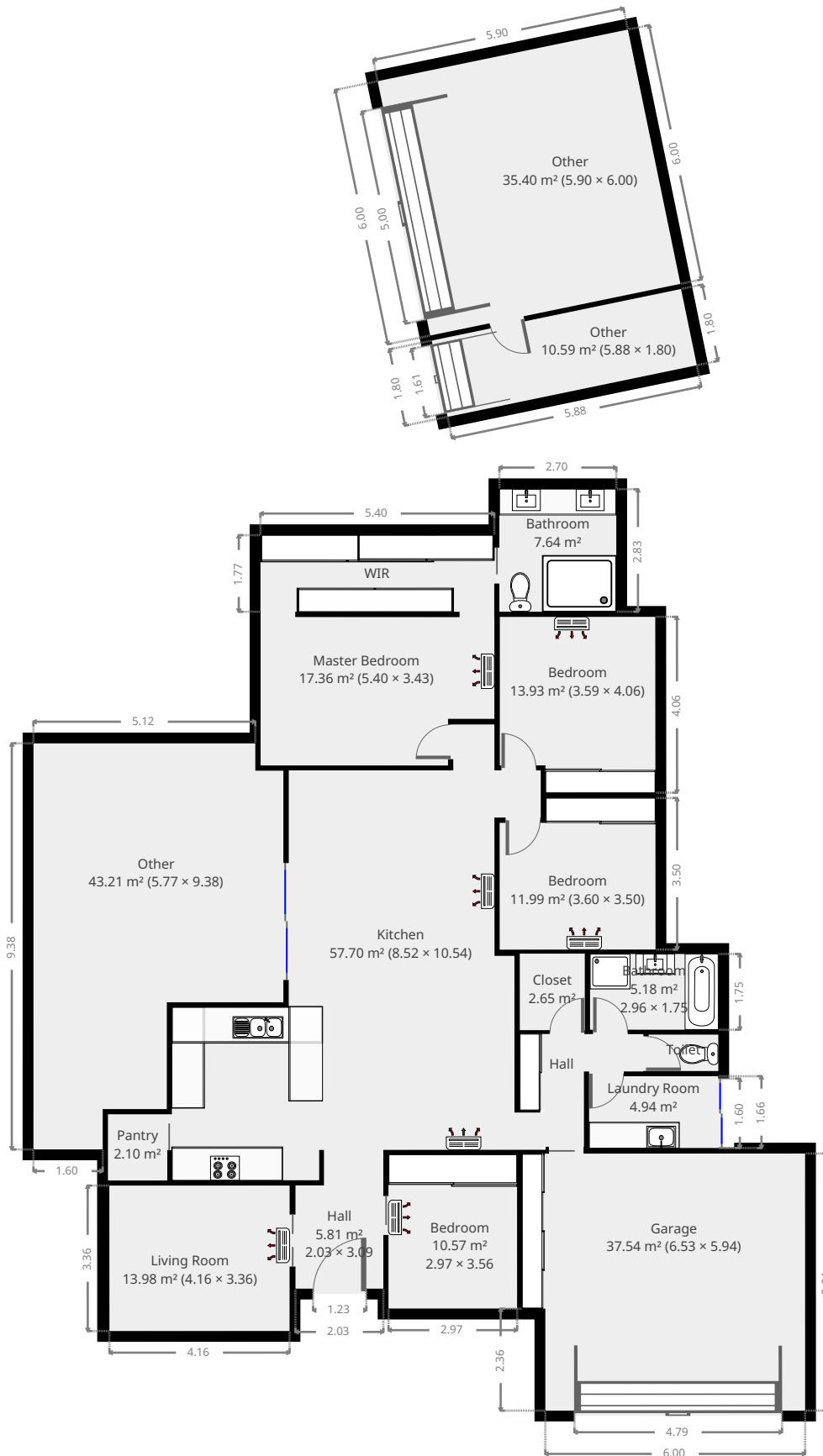


58 Bramble Street

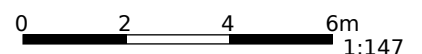
Created on
2020-08-11

Floors
1

▼ Ground Floor



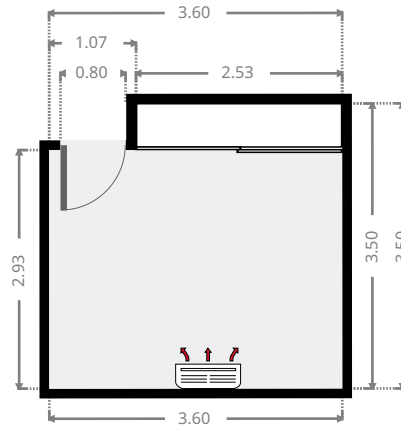
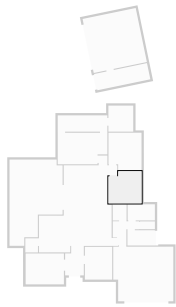
THIS FLOORPLAN IS PROVIDED WITHOUT WARRANTY OF ANY KIND. SENSOPIA DISCLAIMS ANY WARRANTY INCLUDING, WITHOUT LIMITATION, SATISFACTORY QUALITY OR ACCURACY OF DIMENSIONS.



FLOORS: 1

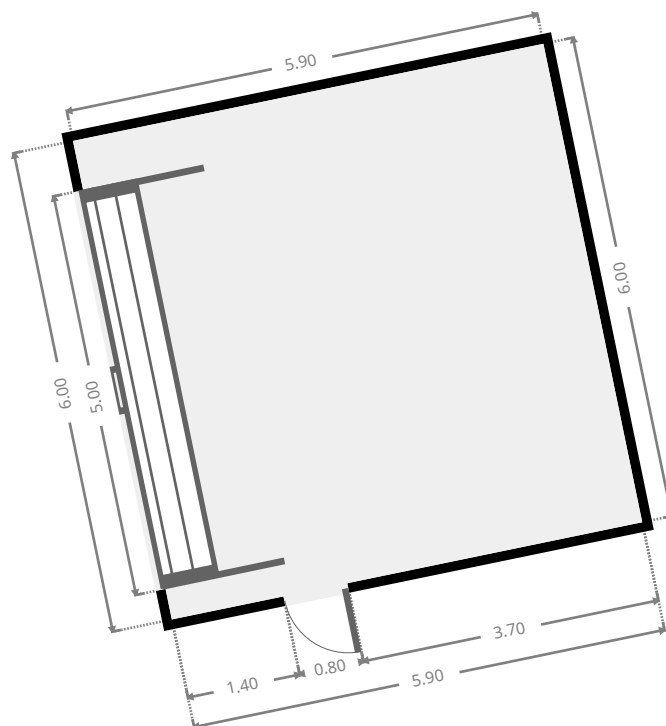
▼ Bedroom Ground Floor

WIDTH: 3.60 m • LENGTH: 3.50 m
AREA: 11.99 m² • PERIMETER: 14.20 m

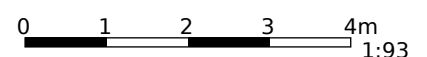


▼ Other Ground Floor

WIDTH: 5.90 m • LENGTH: 6.00 m
AREA: 35.40 m² • PERIMETER: 23.80 m



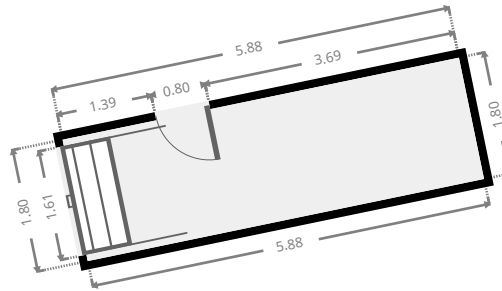
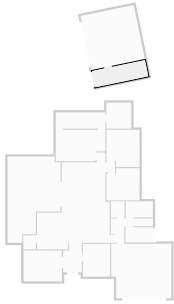
THIS FLOORPLAN IS PROVIDED WITHOUT WARRANTY OF ANY KIND. SENSOPIA DISCLAIMS ANY WARRANTY INCLUDING, WITHOUT LIMITATION, SATISFACTORY QUALITY OR ACCURACY OF DIMENSIONS.



FLOORS: 1

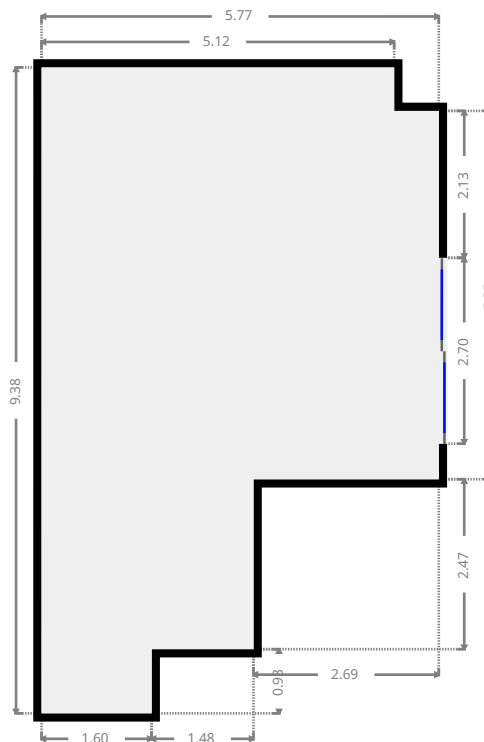
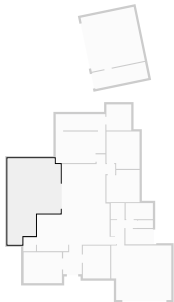
▼ Other Ground Floor

WIDTH: 5.88 m • LENGTH: 1.80 m
AREA: 10.59 m² • PERIMETER: 15.36 m

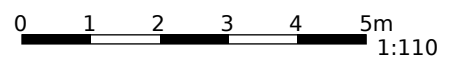


▼ Other Ground Floor

WIDTH: 5.77 m • LENGTH: 9.38 m
AREA: 43.21 m² • PERIMETER: 30.31 m



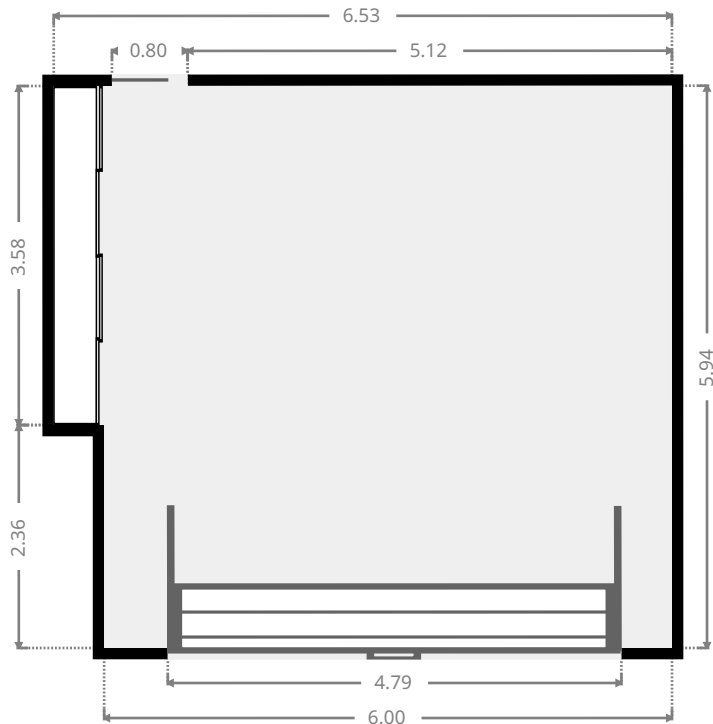
THIS FLOORPLAN IS PROVIDED WITHOUT WARRANTY OF ANY KIND. SENSOPIA DISCLAIMS ANY WARRANTY INCLUDING, WITHOUT LIMITATION, SATISFACTORY QUALITY OR ACCURACY OF DIMENSIONS.



FLOORS: 1

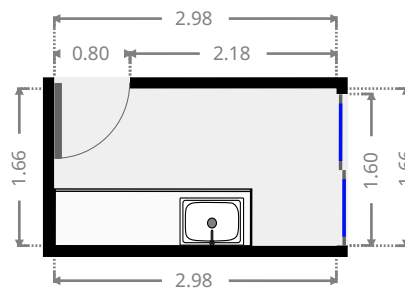
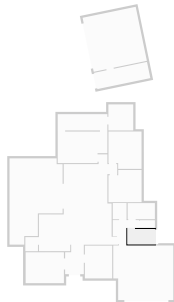
▼ **Garage**
Ground Floor

WIDTH: 6.53 m • **LENGTH:** 5.94 m
AREA: 37.54 m² • **PERIMETER:** 24.94 m



▼ **Laundry Room**
Ground Floor

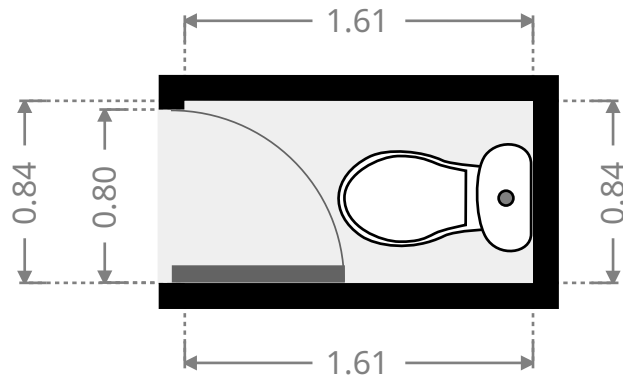
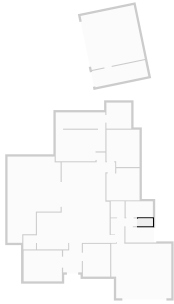
WIDTH: 2.98 m • **LENGTH:** 1.66 m
AREA: 4.94 m² • **PERIMETER:** 9.28 m



FLOORS: 1

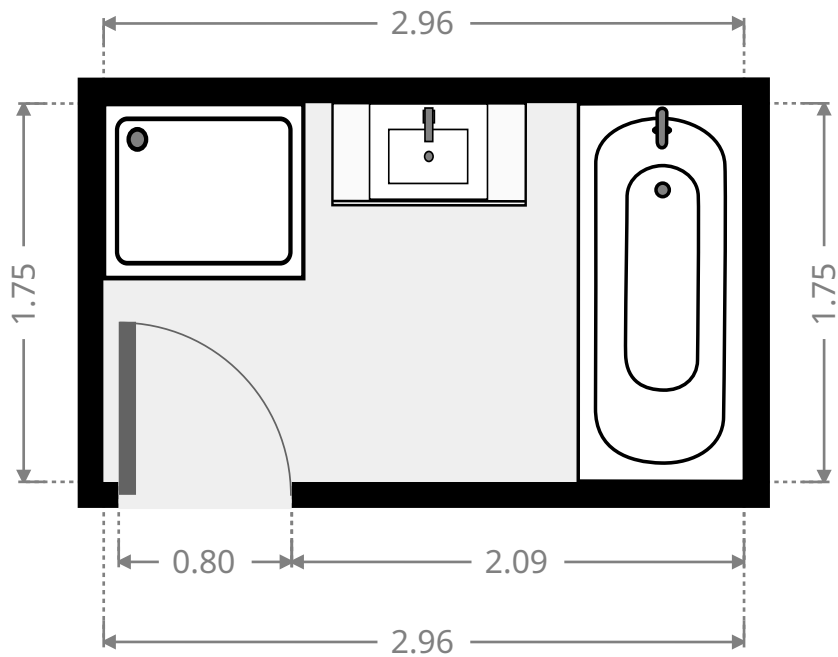
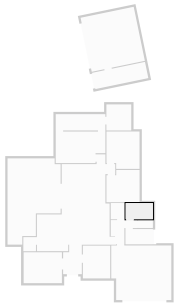
▼ **Toilet**
Ground Floor

WIDTH: 1.61 m • LENGTH: 0.84 m
AREA: 1.35 m² • PERIMETER: 4.90 m



▼ **Bathroom**
Ground Floor

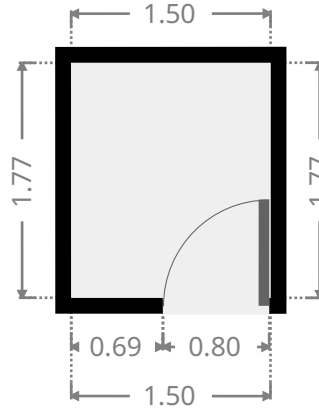
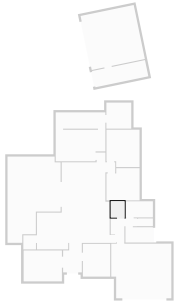
WIDTH: 2.96 m • LENGTH: 1.75 m
AREA: 5.18 m² • PERIMETER: 9.42 m



FLOORS: 1

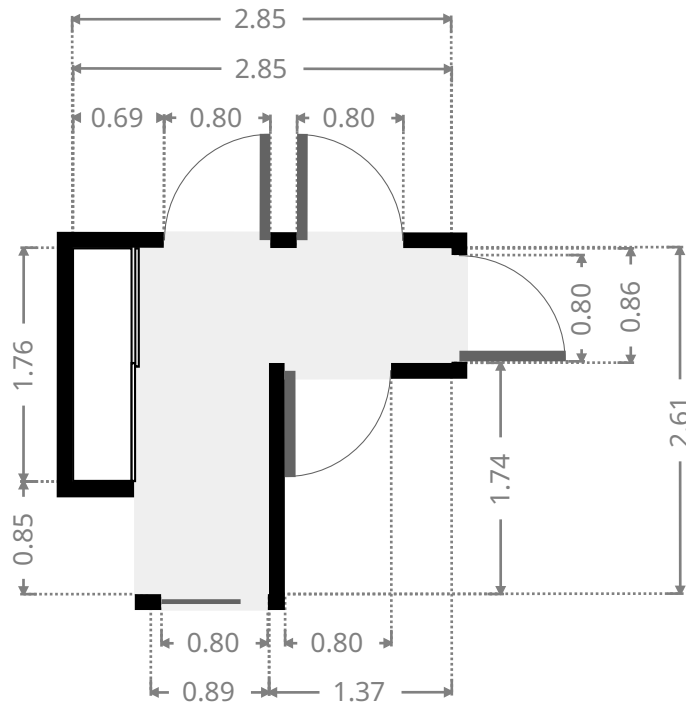
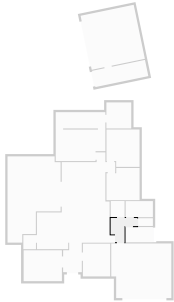
▼ **Closet**
Ground Floor

WIDTH: 1.50 m • LENGTH: 1.77 m
AREA: 2.65 m² • PERIMETER: 6.54 m



▼ **Hall**
Ground Floor

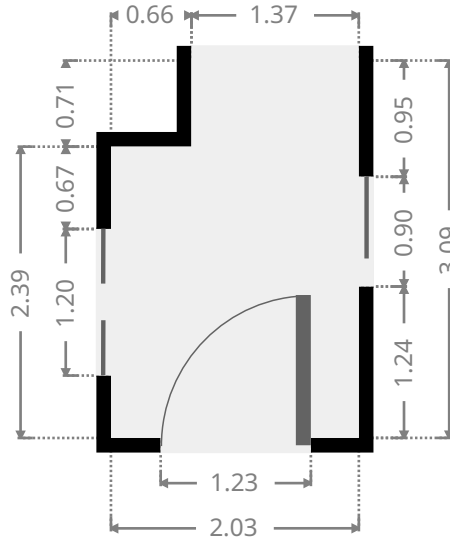
WIDTH: 2.85 m • LENGTH: 2.61 m
AREA: 4.54 m² • PERIMETER: 10.91 m



FLOORS: 1

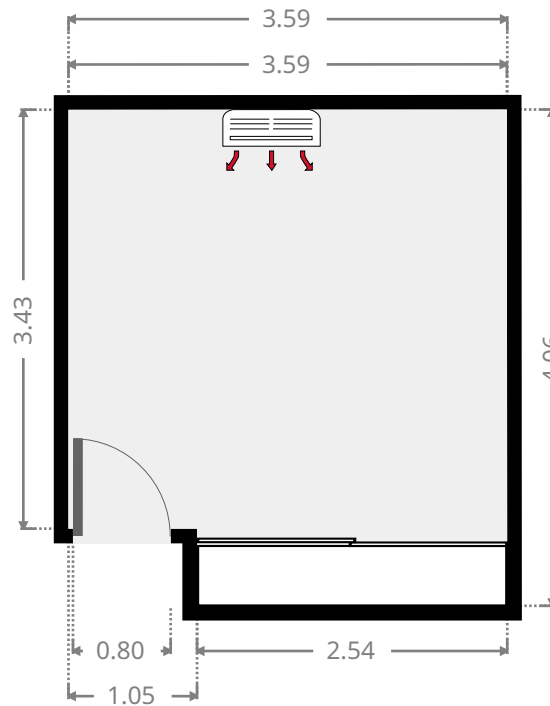
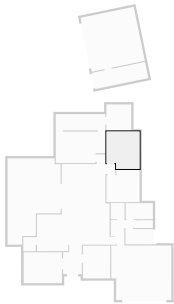
▼ **Hall**
Ground Floor

WIDTH: 2.03 m • **LENGTH:** 3.09 m
AREA: 5.81 m² • **PERIMETER:** 10.24 m

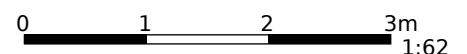


▼ **Bedroom**
Ground Floor

WIDTH: 3.59 m • **LENGTH:** 4.06 m
AREA: 13.93 m² • **PERIMETER:** 15.31 m

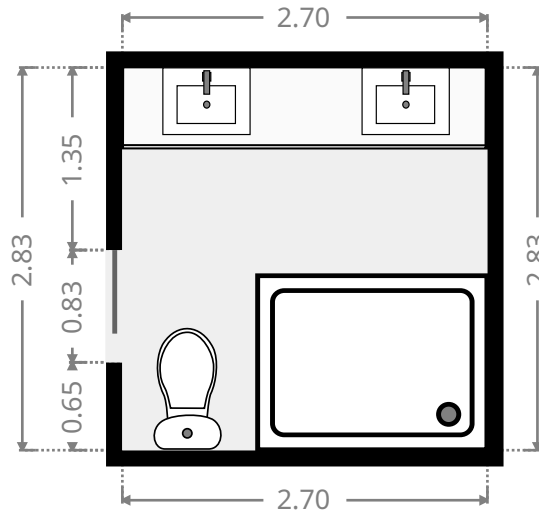
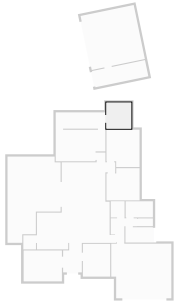


THIS FLOORPLAN IS PROVIDED WITHOUT WARRANTY OF ANY KIND. SENSOPIA DISCLAIMS ANY WARRANTY INCLUDING, WITHOUT LIMITATION, SATISFACTORY QUALITY OR ACCURACY OF DIMENSIONS.



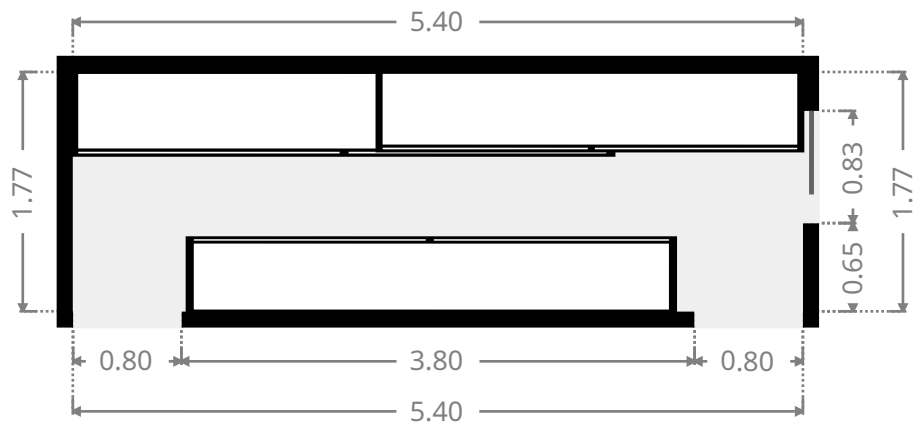
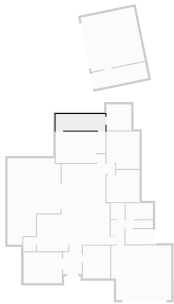
▼ **Bathroom**
Ground Floor

WIDTH: 2.70 m • LENGTH: 2.83 m
AREA: 7.64 m² • PERIMETER: 11.06 m



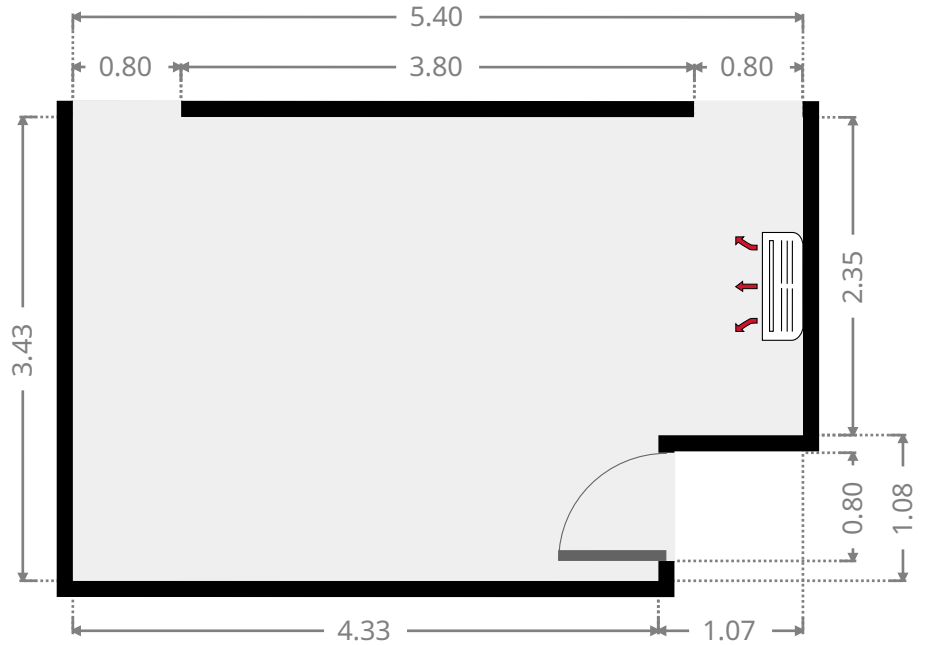
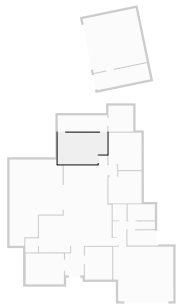
▼ **WIR**
Ground Floor

WIDTH: 5.40 m • LENGTH: 1.77 m
AREA: 9.56 m² • PERIMETER: 14.34 m



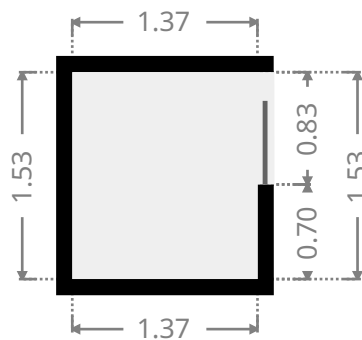
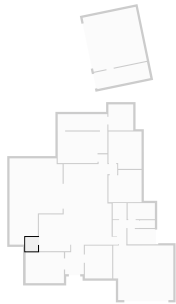
▼ **Master Bedroom**
Ground Floor

WIDTH: 5.40 m • LENGTH: 3.43 m
AREA: 17.36 m² • PERIMETER: 17.66 m



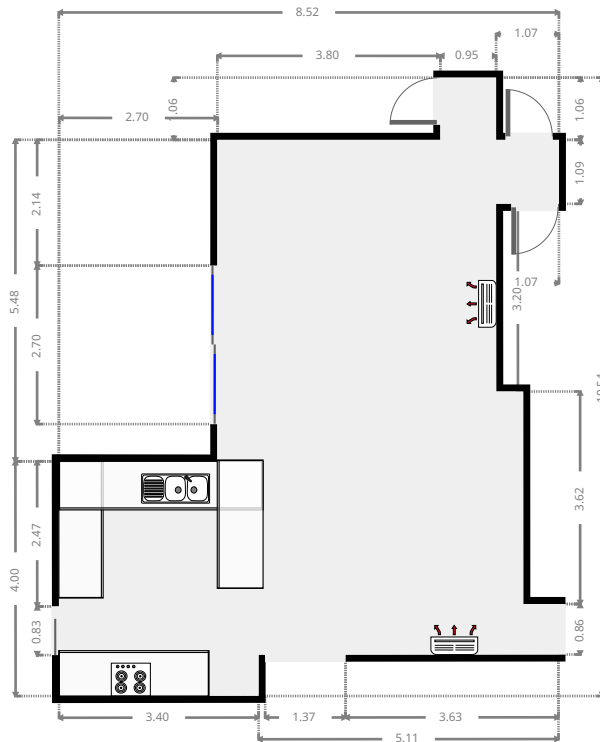
▼ **Pantry**
Ground Floor

WIDTH: 1.37 m • LENGTH: 1.53 m
AREA: 2.10 m² • PERIMETER: 5.80 m



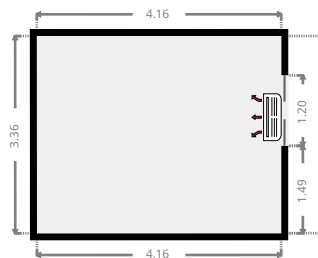
▼ Kitchen Ground Floor

WIDTH: 8.52 m • LENGTH: 10.54 m
AREA: 57.70 m² • PERIMETER: 40.23 m



▼ Living Room Ground Floor

WIDTH: 4.16 m • LENGTH: 3.36 m
AREA: 13.98 m² • PERIMETER: 15.04 m



FLOORS: 1

▼ Bedroom Ground Floor

WIDTH: 2.97 m • LENGTH: 3.56 m
AREA: 10.57 m² • PERIMETER: 13.06 m

