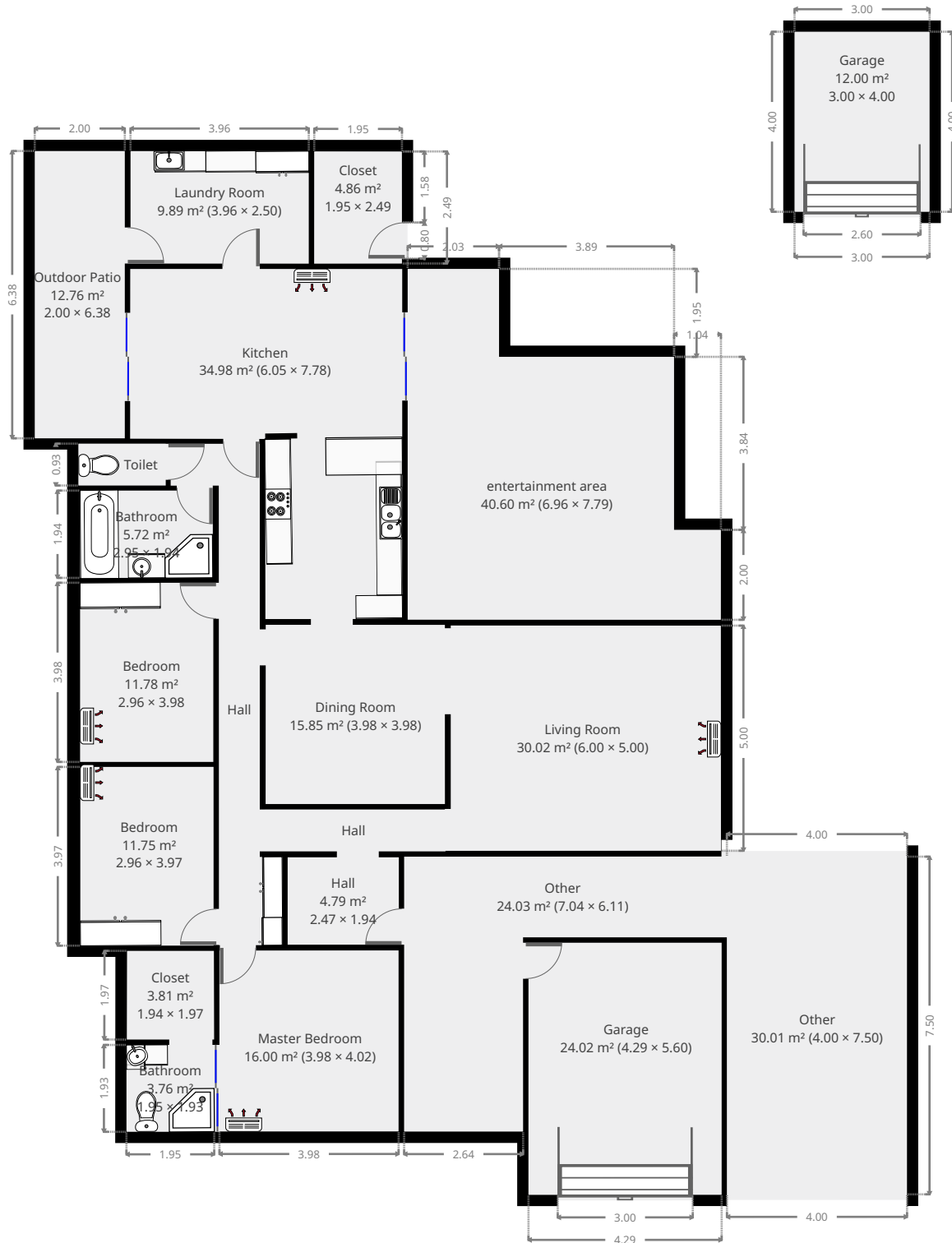


# 56 Buzacott Street

## Ground Floor



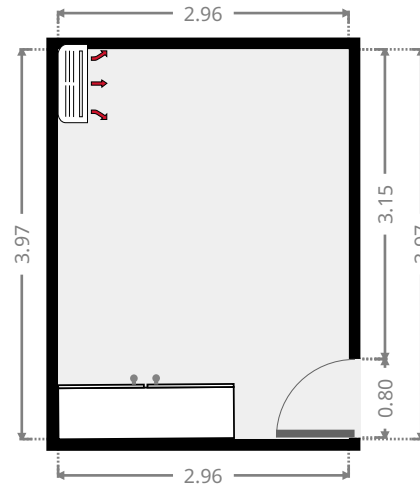
THIS FLOORPLAN IS PROVIDED WITHOUT WARRANTY OF ANY KIND. SENSOPIA DISCLAIMS ANY WARRANTY INCLUDING, WITHOUT LIMITATION, SATISFACTORY QUALITY OR ACCURACY OF DIMENSIONS.



# 56 Buzacott Street

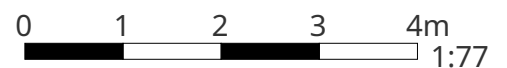
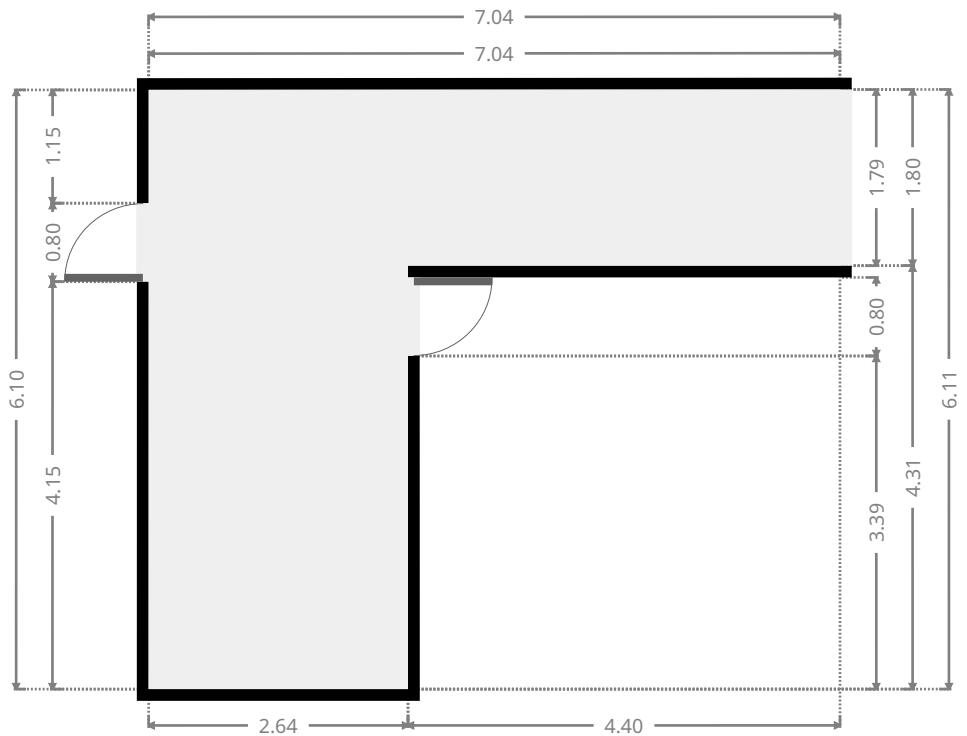
## Bedroom

Width: 2.96 m  
 Length: 3.97 m  
 Area: 11.75 m<sup>2</sup>  
 Perimeter: 13.86 m



## Other

Width: 6.11 m  
 Length: 7.04 m  
 Area: 24.03 m<sup>2</sup>  
 Perimeter: 26.30 m

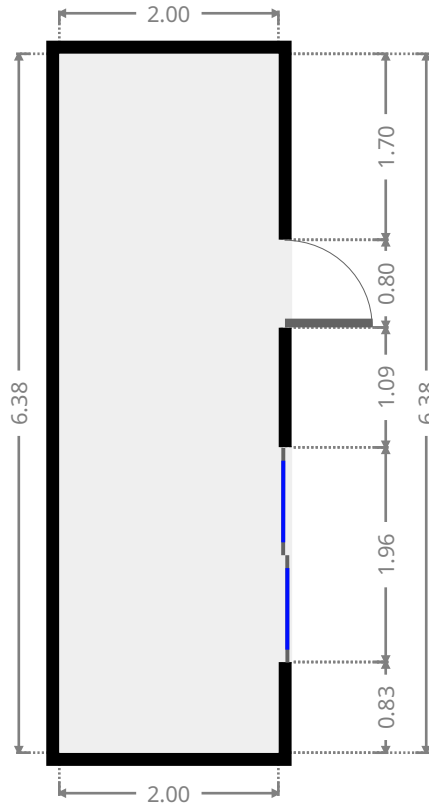
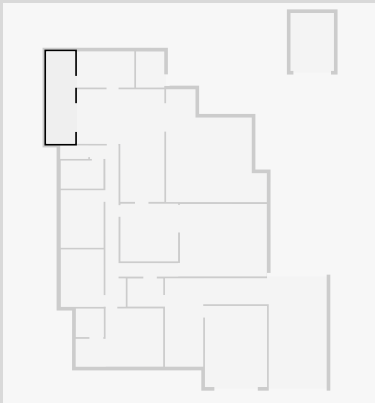


THIS FLOORPLAN IS PROVIDED WITHOUT WARRANTY OF ANY KIND. SENSOPIA DISCLAIMS ANY WARRANTY INCLUDING, WITHOUT LIMITATION, SATISFACTORY QUALITY OR ACCURACY OF DIMENSIONS.

# 56 Buzacott Street

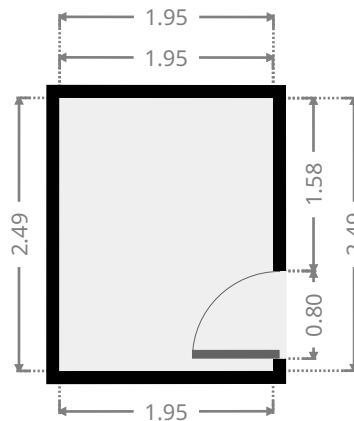
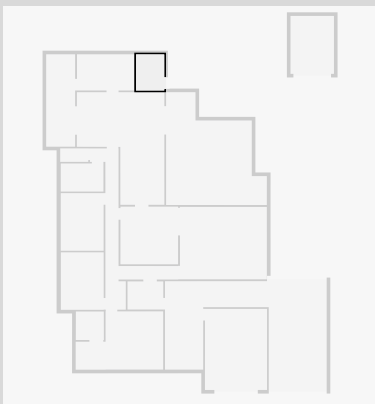
## Outdoor Patio

Width: 2.00 m  
Length: 6.38 m  
Area: 12.76 m<sup>2</sup>  
Perimeter: 16.76 m



## Closet

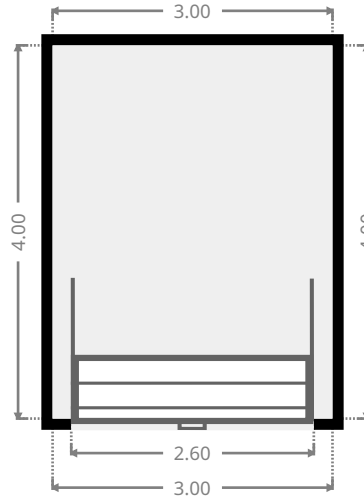
Width: 1.95 m  
Length: 2.49 m  
Area: 4.86 m<sup>2</sup>  
Perimeter: 8.88 m



# 56 Buzacott Street

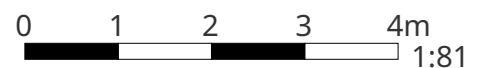
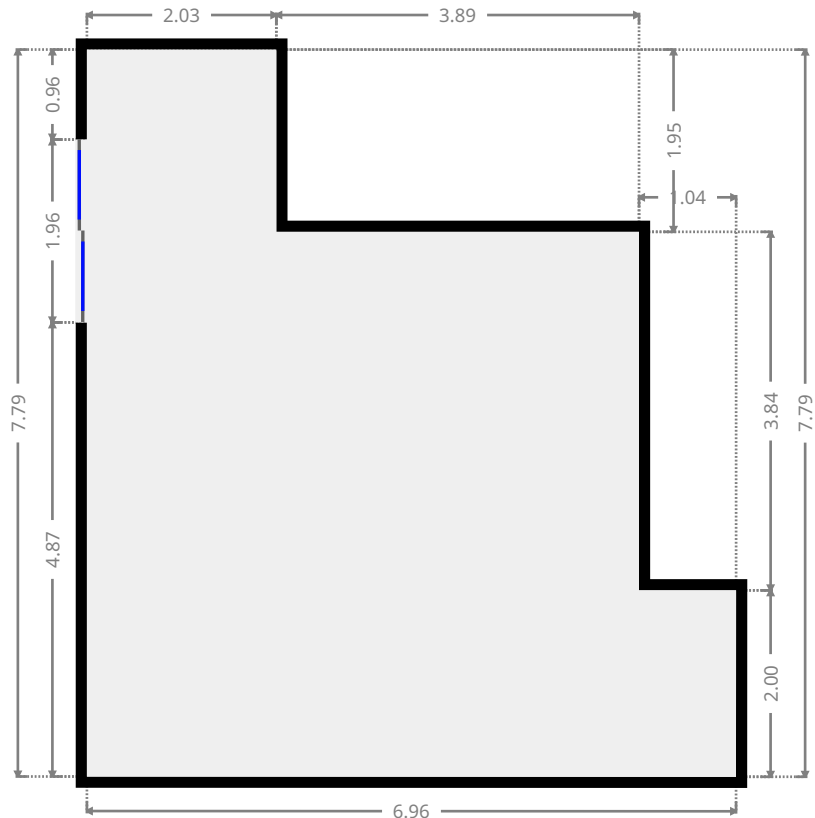
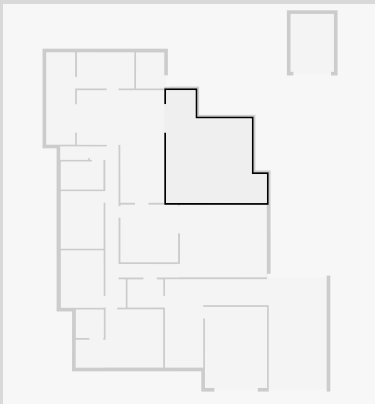
## Garage

Width: 3.00 m  
Length: 4.00 m  
Area: 12.00 m<sup>2</sup>  
Perimeter: 14.00 m



## entertainment area

Width: 6.96 m  
Length: 7.79 m  
Area: 40.60 m<sup>2</sup>  
Perimeter: 29.50 m

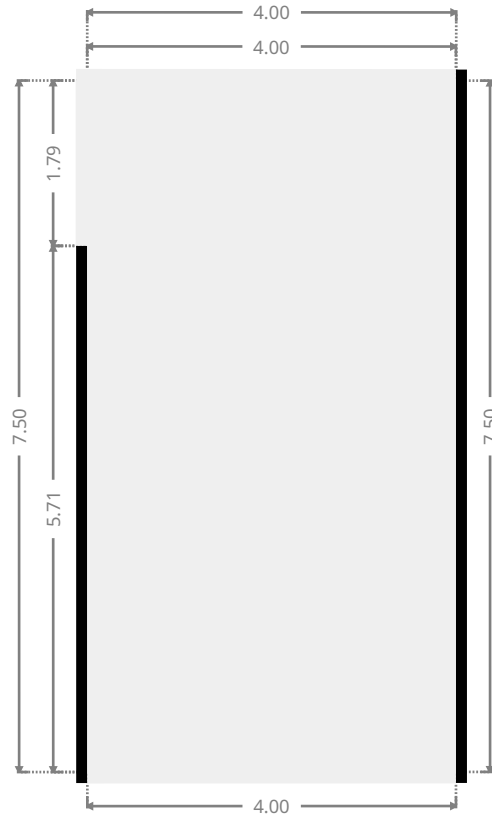


THIS FLOORPLAN IS PROVIDED WITHOUT WARRANTY OF ANY KIND. SENSOPIA DISCLAIMS ANY WARRANTY INCLUDING, WITHOUT LIMITATION, SATISFACTORY QUALITY OR ACCURACY OF DIMENSIONS.

# 56 Buzacott Street

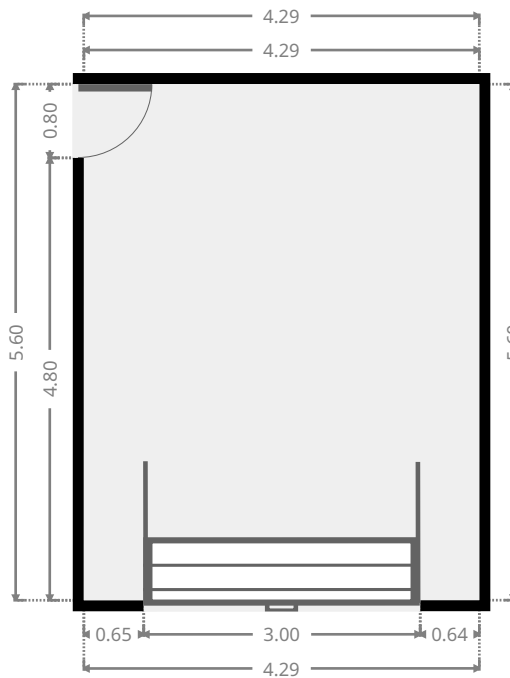
## Other

Width: 4.00 m  
 Length: 7.50 m  
 Area: 30.01 m<sup>2</sup>  
 Perimeter: 23.00 m



## Garage

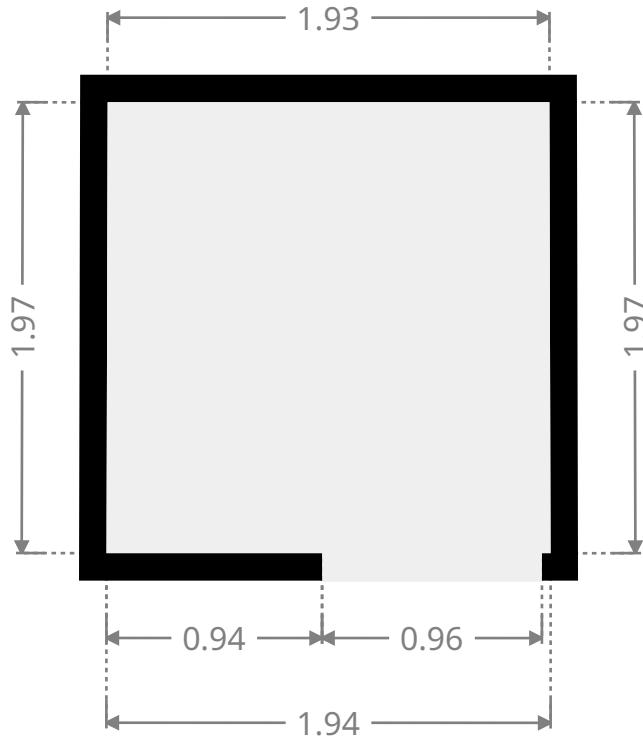
Width: 4.29 m  
 Length: 5.60 m  
 Area: 24.02 m<sup>2</sup>  
 Perimeter: 19.78 m



# 56 Buzacott Street

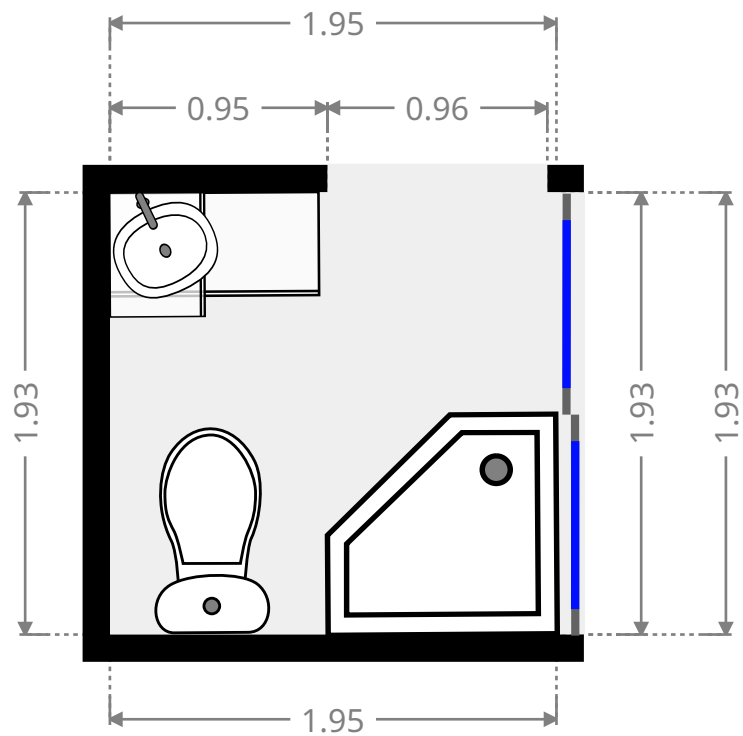
## Closet

Width: 1.94 m  
Length: 1.97 m  
Area: 3.81 m<sup>2</sup>  
Perimeter: 7.81 m

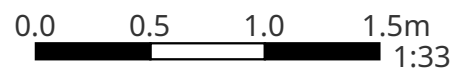


## Bathroom

Width: 1.93 m  
Length: 1.95 m  
Area: 3.76 m<sup>2</sup>  
Perimeter: 7.76 m



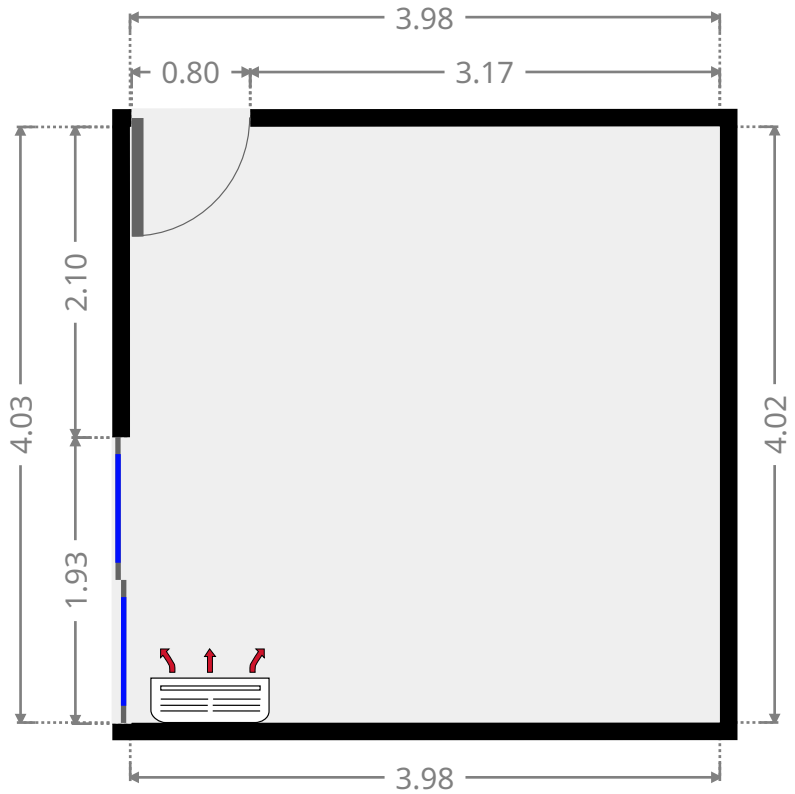
THIS FLOORPLAN IS PROVIDED WITHOUT WARRANTY OF ANY KIND. SENSOPIA DISCLAIMS ANY WARRANTY INCLUDING, WITHOUT LIMITATION, SATISFACTORY QUALITY OR ACCURACY OF DIMENSIONS.



# 56 Buzacott Street

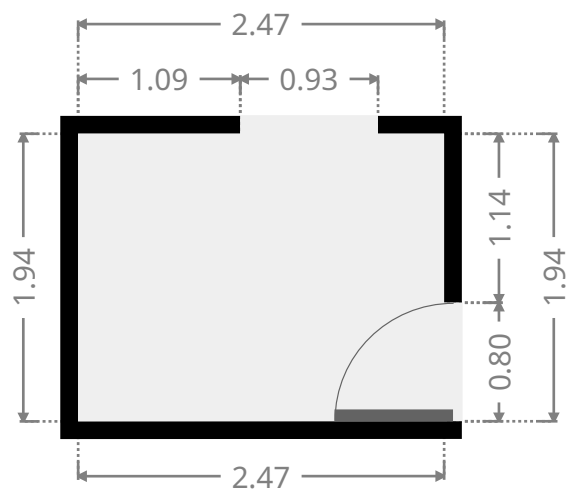
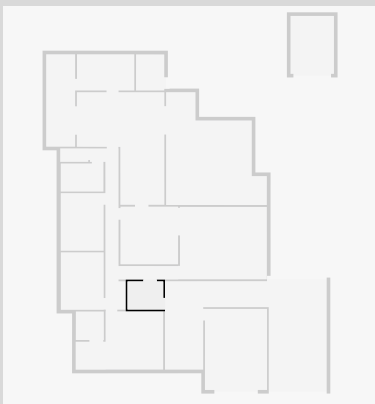
## Master Bedroom

Width: 3.98 m  
Length: 4.02 m  
Area: 16.00 m<sup>2</sup>  
Perimeter: 16.00 m



## Hall

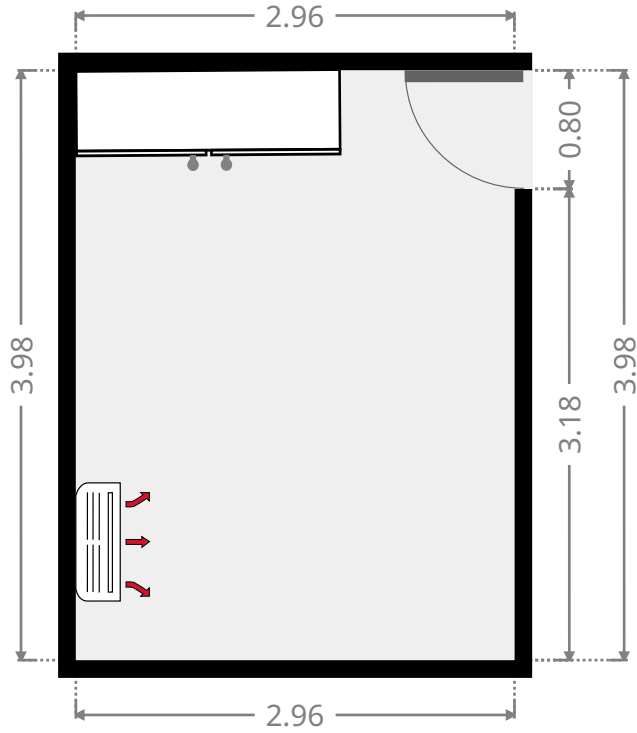
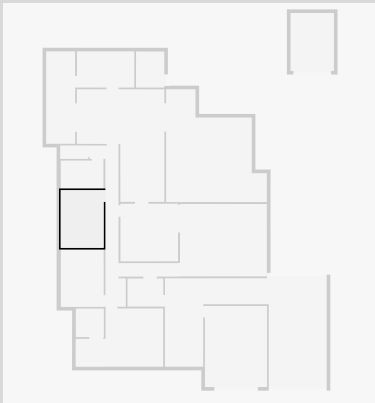
Width: 1.94 m  
Length: 2.47 m  
Area: 4.79 m<sup>2</sup>  
Perimeter: 8.82 m



# 56 Buzacott Street

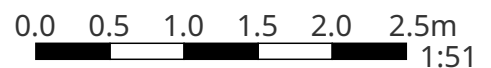
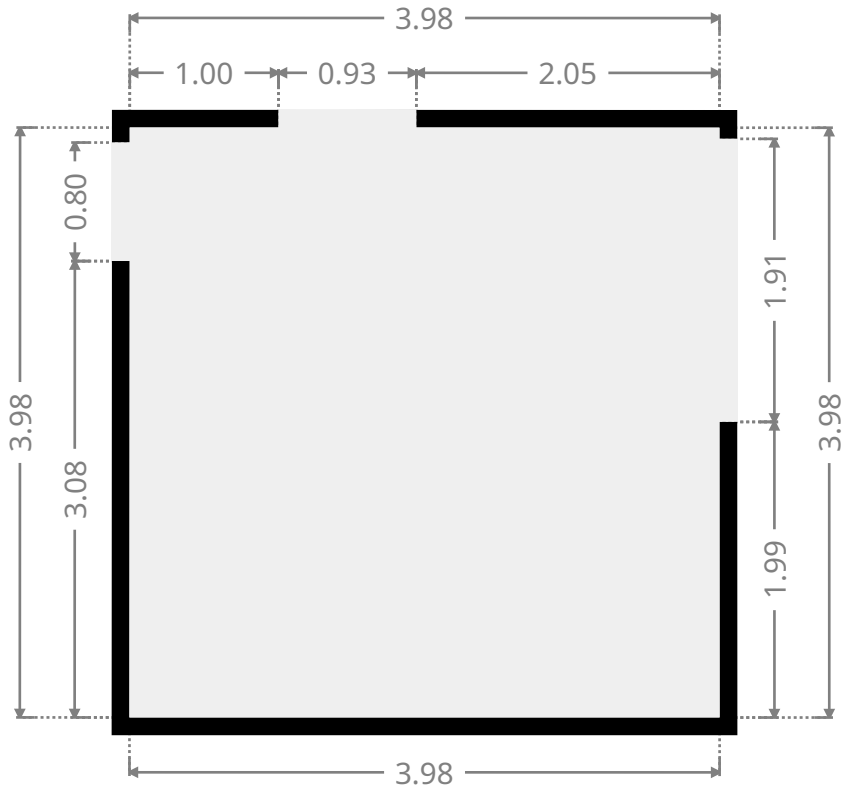
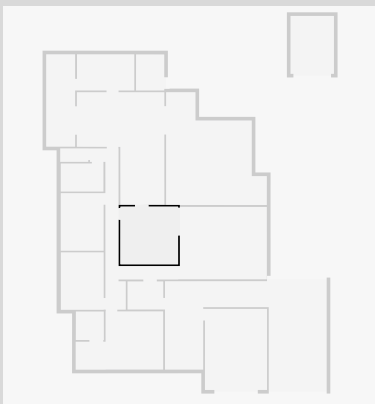
## Bedroom

Width: 2.96 m  
 Length: 3.98 m  
 Area: 11.78 m<sup>2</sup>  
 Perimeter: 13.88 m



## Dining Room

Width: 3.98 m  
 Length: 3.98 m  
 Area: 15.85 m<sup>2</sup>  
 Perimeter: 15.92 m



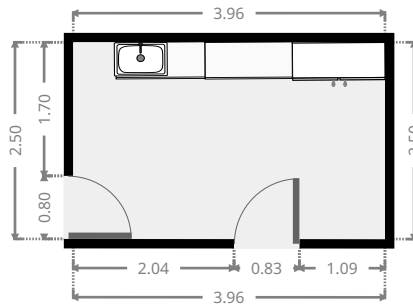
THIS FLOORPLAN IS PROVIDED WITHOUT WARRANTY OF ANY KIND. SENSOPIA DISCLAIMS ANY WARRANTY INCLUDING, WITHOUT LIMITATION, SATISFACTORY QUALITY OR ACCURACY OF DIMENSIONS.



# 56 Buzacott Street

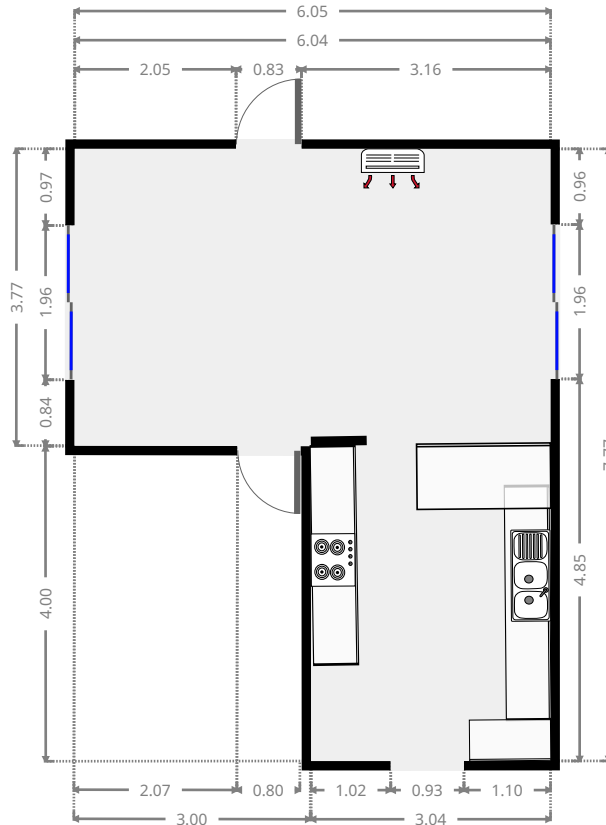
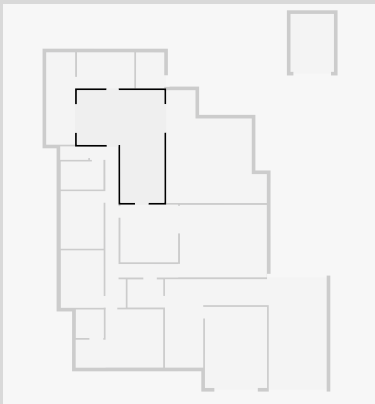
## Laundry Room

Width: 2.50 m  
 Length: 3.96 m  
 Area: 9.89 m<sup>2</sup>  
 Perimeter: 12.92 m



## Kitchen

Width: 6.05 m  
 Length: 7.78 m  
 Area: 34.98 m<sup>2</sup>  
 Perimeter: 27.63 m

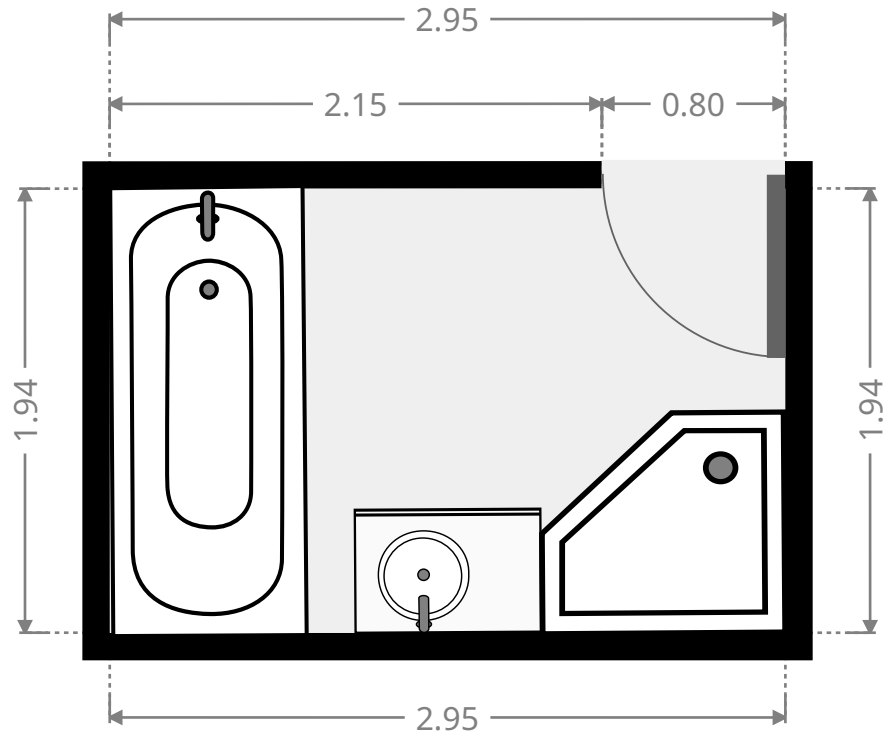
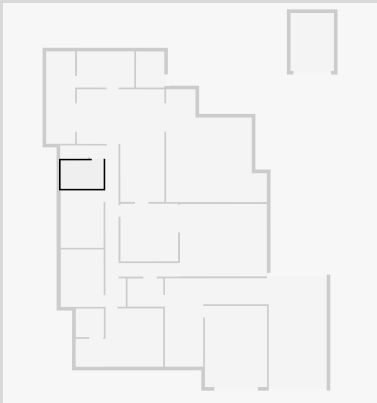


THIS FLOORPLAN IS PROVIDED WITHOUT WARRANTY OF ANY KIND. SENSOPIA DISCLAIMS ANY WARRANTY INCLUDING, WITHOUT LIMITATION, SATISFACTORY QUALITY OR ACCURACY OF DIMENSIONS.

# 56 Buzacott Street

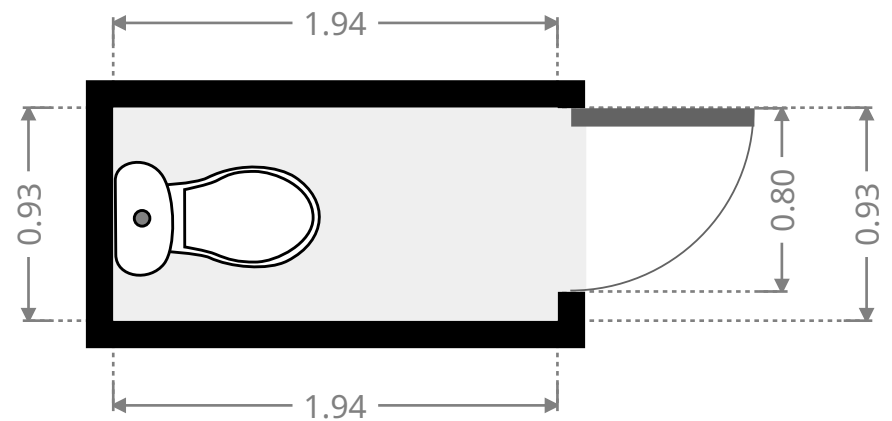
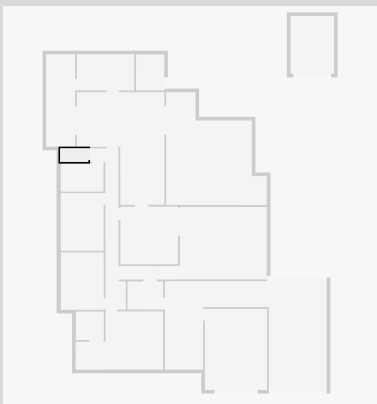
## Bathroom

Width: 1.94 m  
 Length: 2.95 m  
 Area: 5.72 m<sup>2</sup>  
 Perimeter: 9.78 m



## Toilet / Half Bath

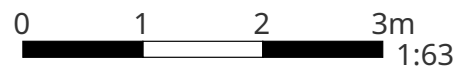
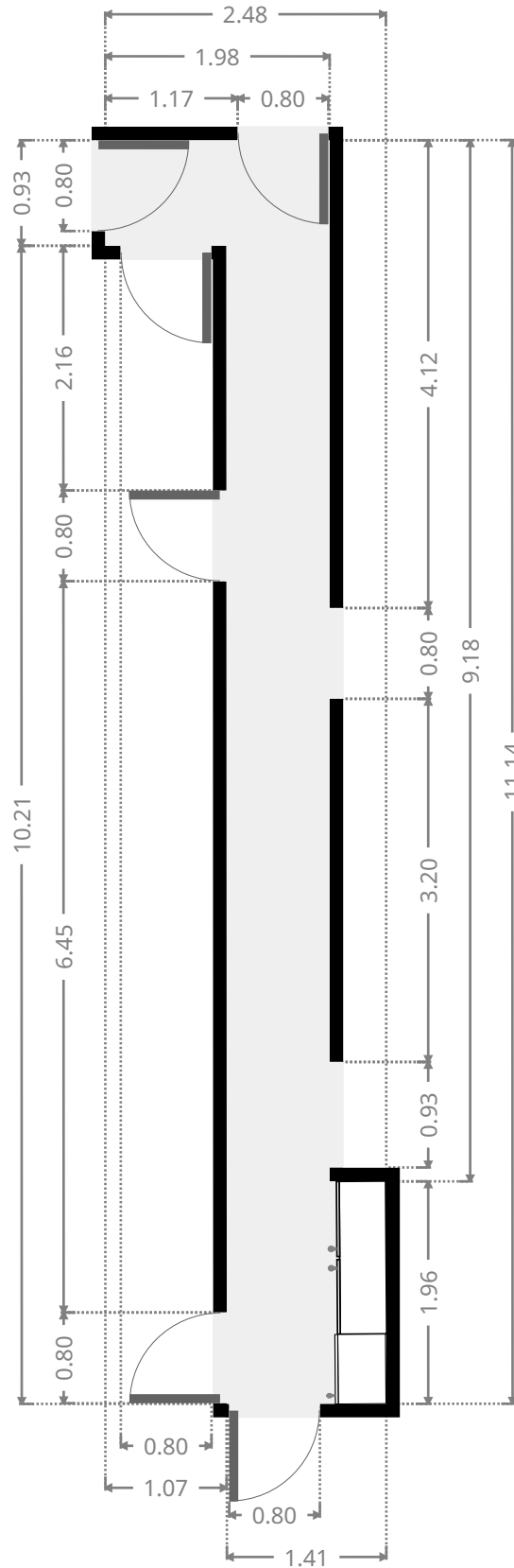
Width: 0.93 m  
 Length: 1.94 m  
 Area: 1.80 m<sup>2</sup>  
 Perimeter: 5.74 m



# 56 Buzacott Street

## Hall

Width: 2.48 m  
 Length: 11.14 m  
 Area: 12.09 m<sup>2</sup>  
 Perimeter: 27.23 m

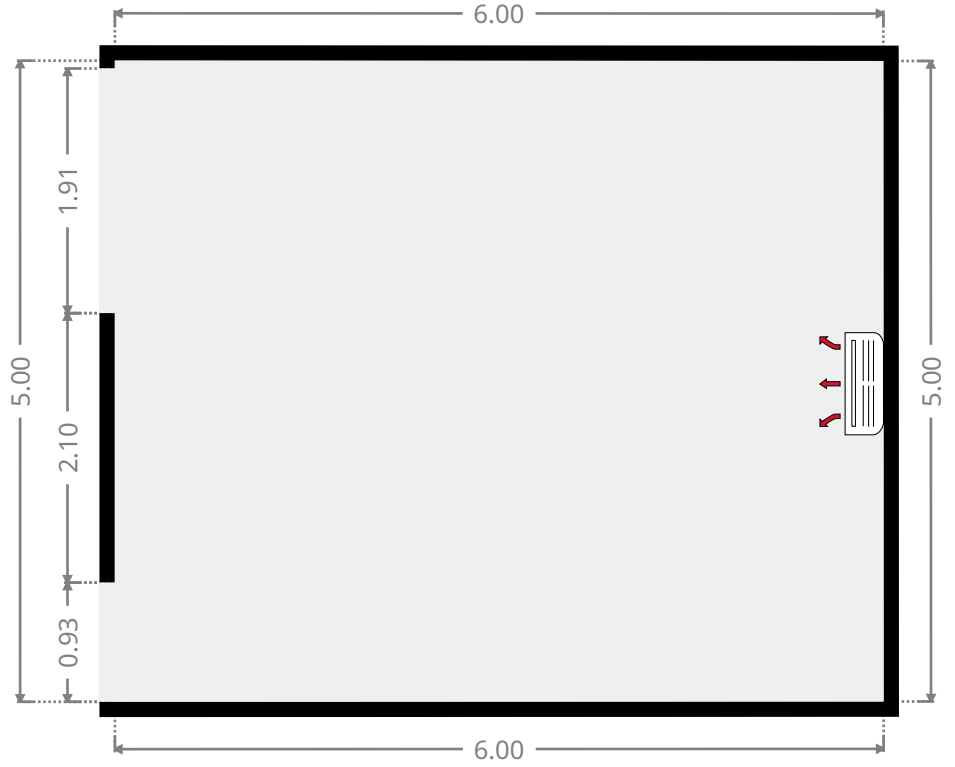
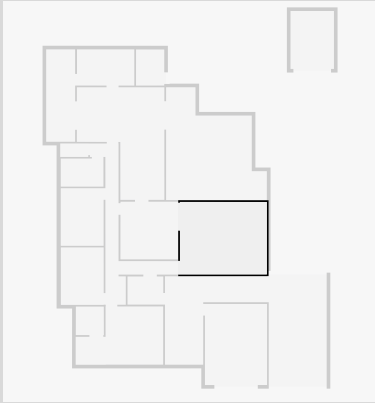


THIS FLOORPLAN IS PROVIDED WITHOUT WARRANTY OF ANY KIND. SENSOPIA DISCLAIMS ANY WARRANTY INCLUDING, WITHOUT LIMITATION, SATISFACTORY QUALITY OR ACCURACY OF DIMENSIONS.

# 56 Buzacott Street

## Living Room

Width: 5.00 m  
 Length: 6.00 m  
 Area: 30.02 m<sup>2</sup>  
 Perimeter: 22.01 m



## Hall

Width: 0.93 m  
 Length: 4.01 m  
 Area: 3.73 m<sup>2</sup>  
 Perimeter: 9.88 m

