

Ray White Rockhampton
reception.rockhampton@raywhite.com
(07)4923 0000
2016-11-02

120 m²

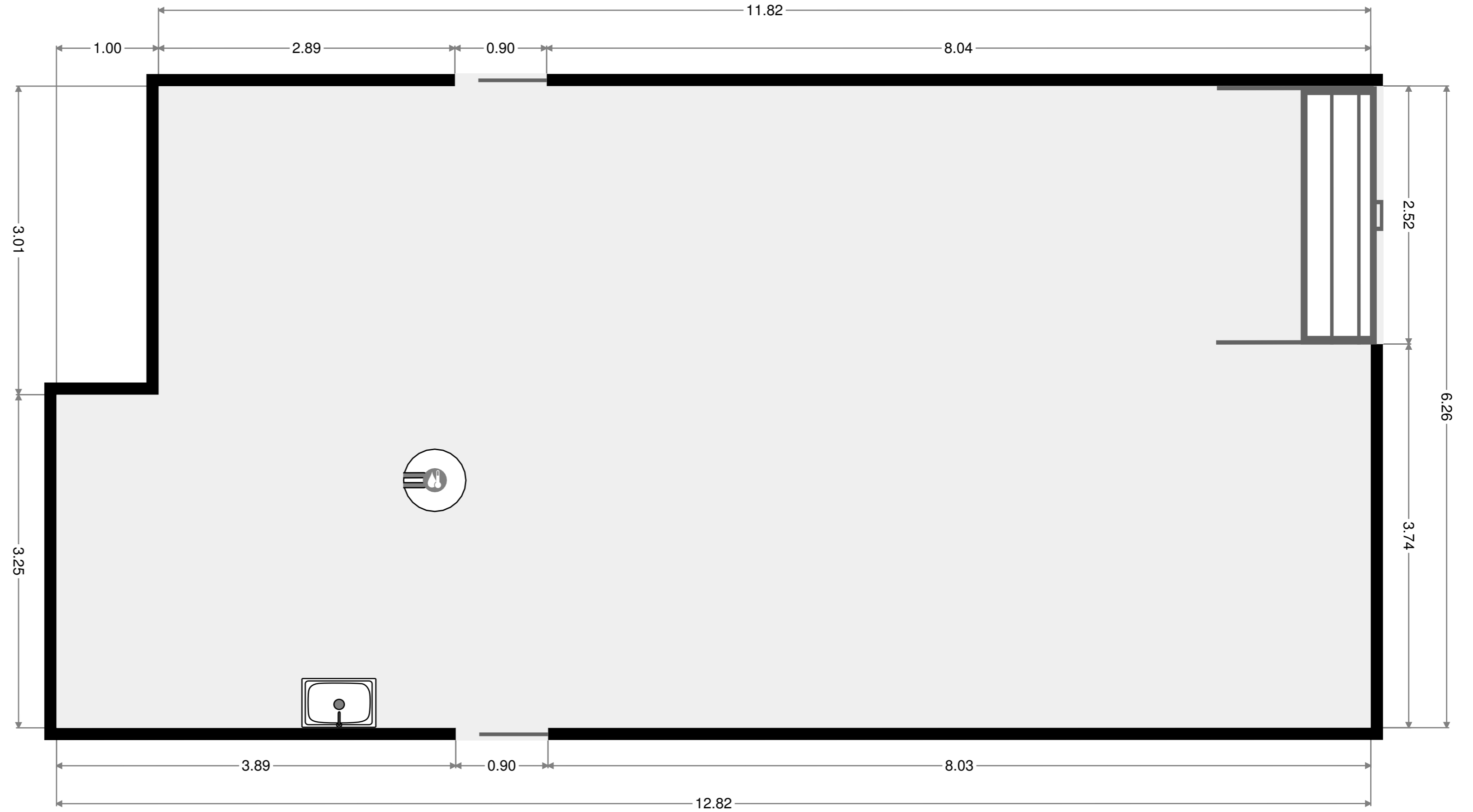
2 Floors

3 Bedrooms

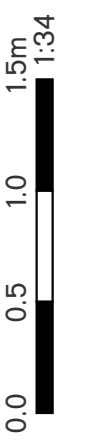
1 Bathroom

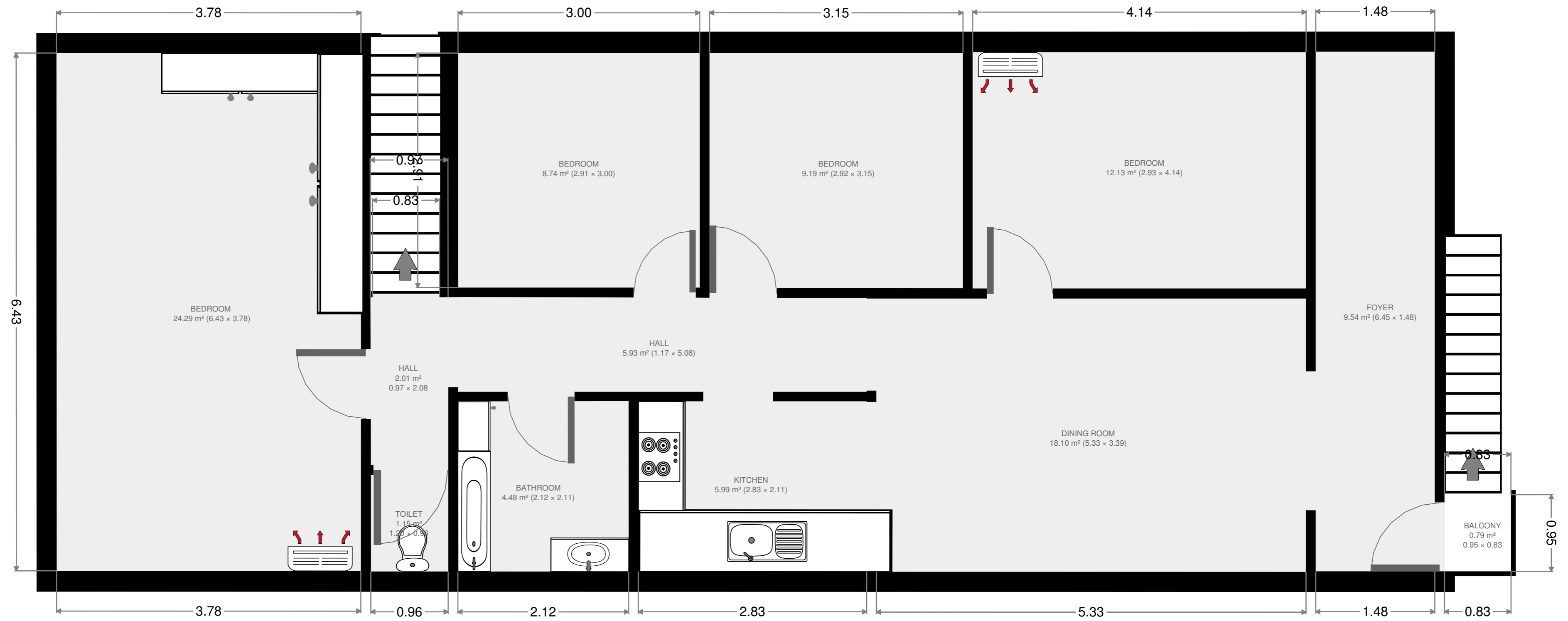
Garage/ Laundry

Width: 6.26 m
Length: 12.82 m
Area: 77.27 m²
Perimeter: 38.16 m
Ceiling Height: 2.17 m



THIS FLOORPLAN IS PROVIDED WITHOUT WARRANTY OF ANY KIND. RAY WHITE ROCKHAMPTON DISCLAIMS ANY WARRANTY INCLUDING, WITHOUT LIMITATION, SATISFACTORY QUALITY OR ACCURACY OF DIMENSIONS. ALL CARE IS TAKEN TO ENSURE ACCURACY BUT MEASUREMENTS, POSITIONING AND PLACEMENTS CANNOT BE GUARANTEED.





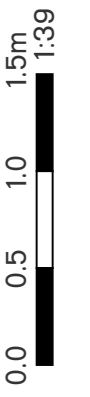
Ray White Rockhampton
reception.rockhampton@raywhite.com
(07)4923 0000
2016-11-02

120 m²

2 Floors

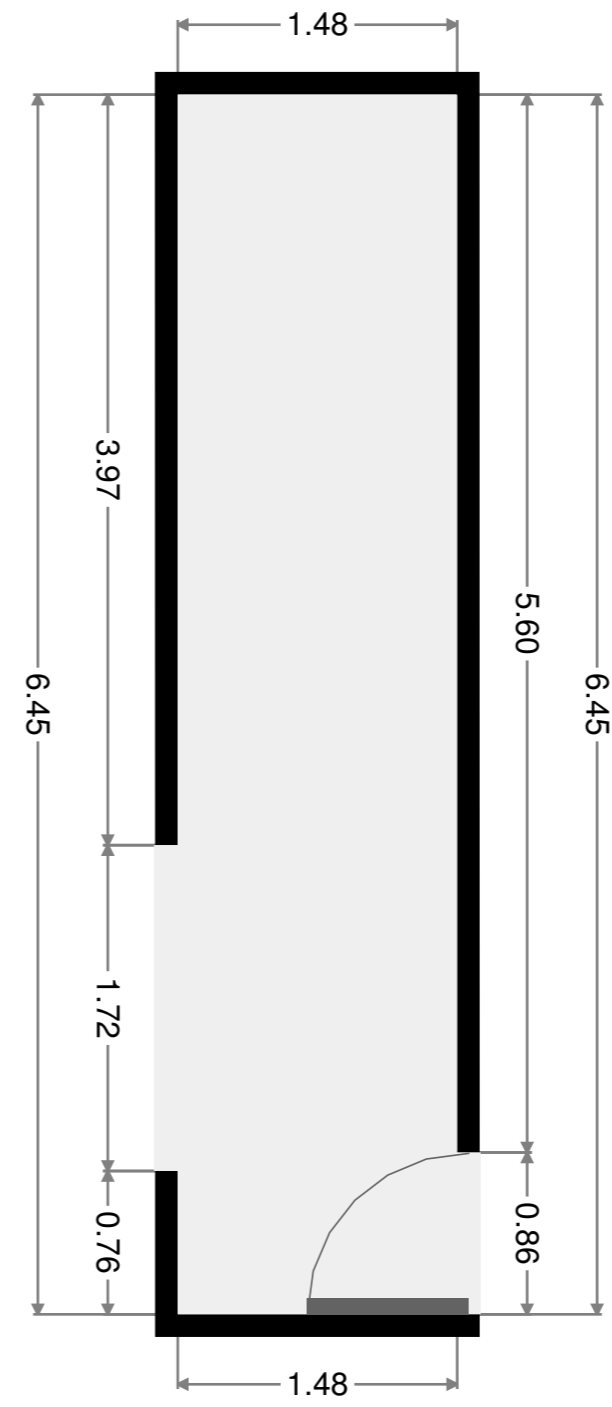
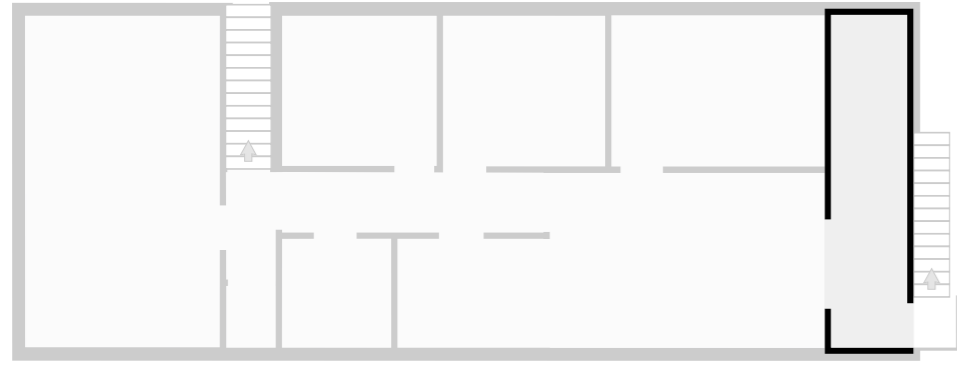
3 Bedrooms

1 Bathroom



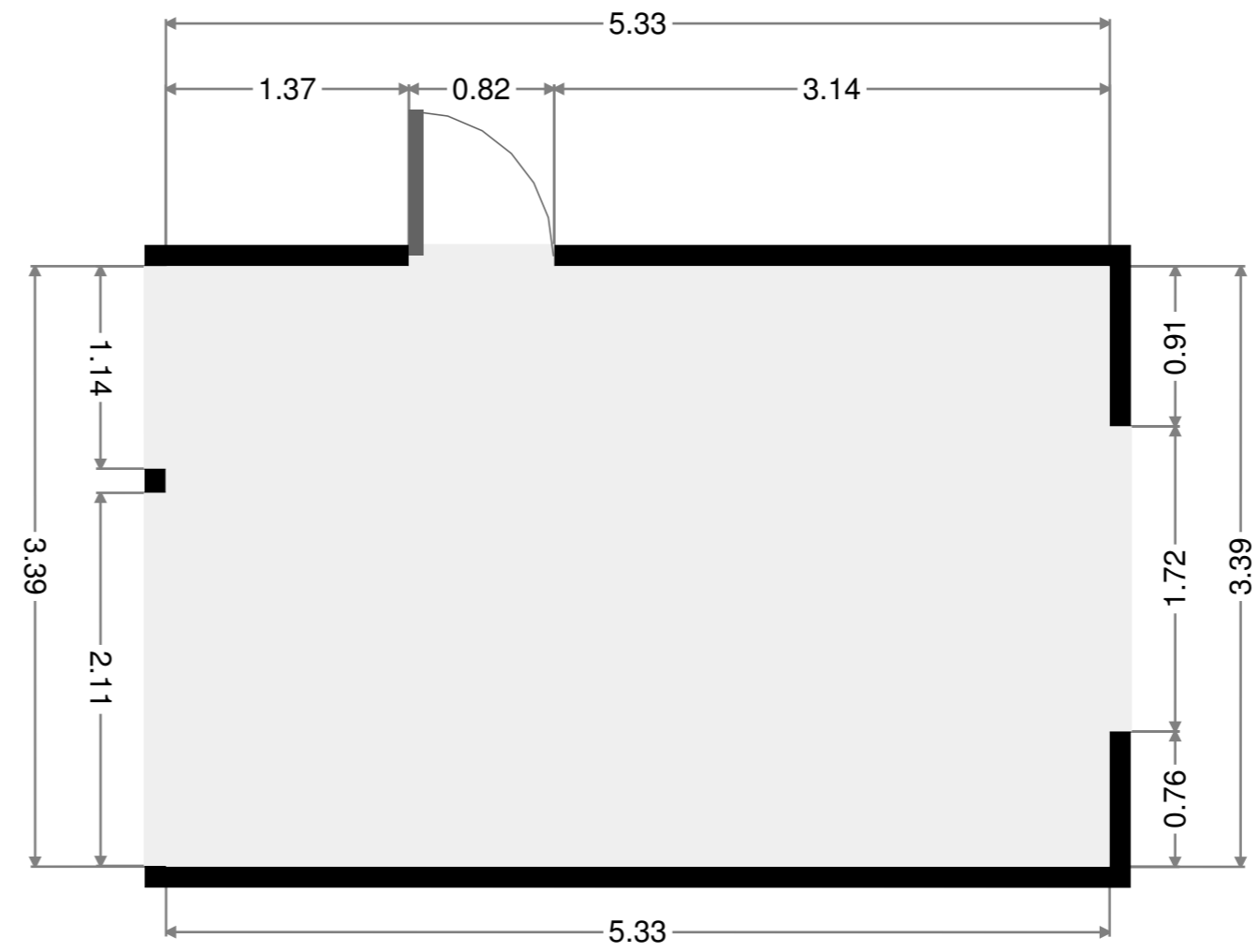
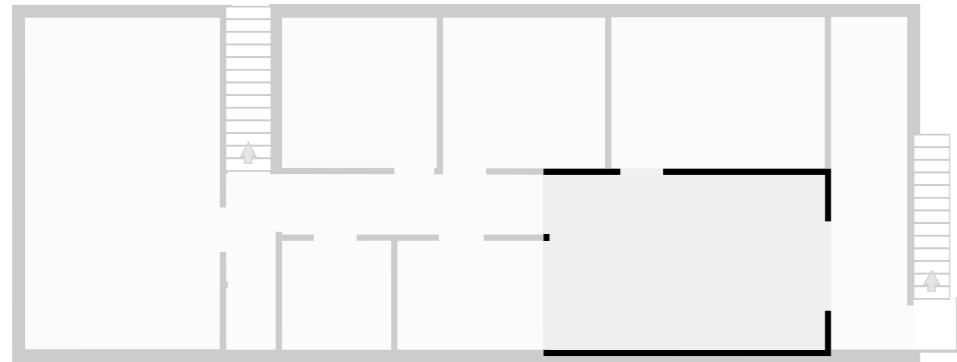
Foyer

Width: 1.48 m
 Length: 6.45 m
 Area: 9.54 m²
 Perimeter: 15.86 m
 Ceiling Height: 2.17 m



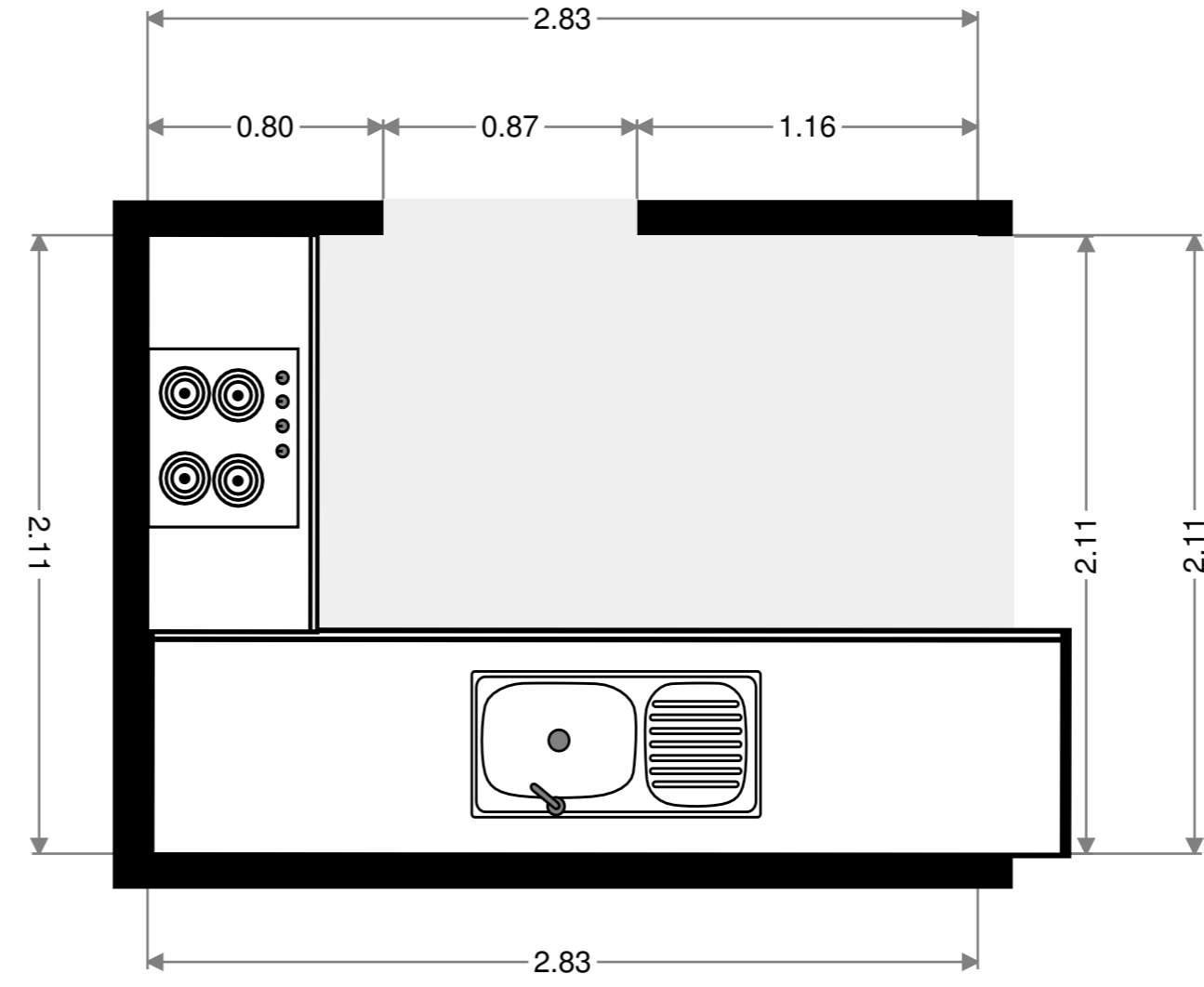
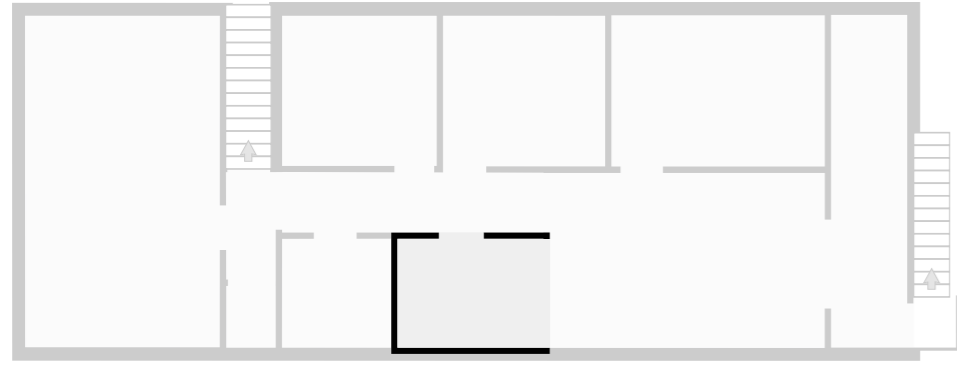
Dining Room

Width: 3.39 m
 Length: 5.33 m
 Area: 18.10 m²
 Perimeter: 17.45 m
 Ceiling Height: 2.17 m



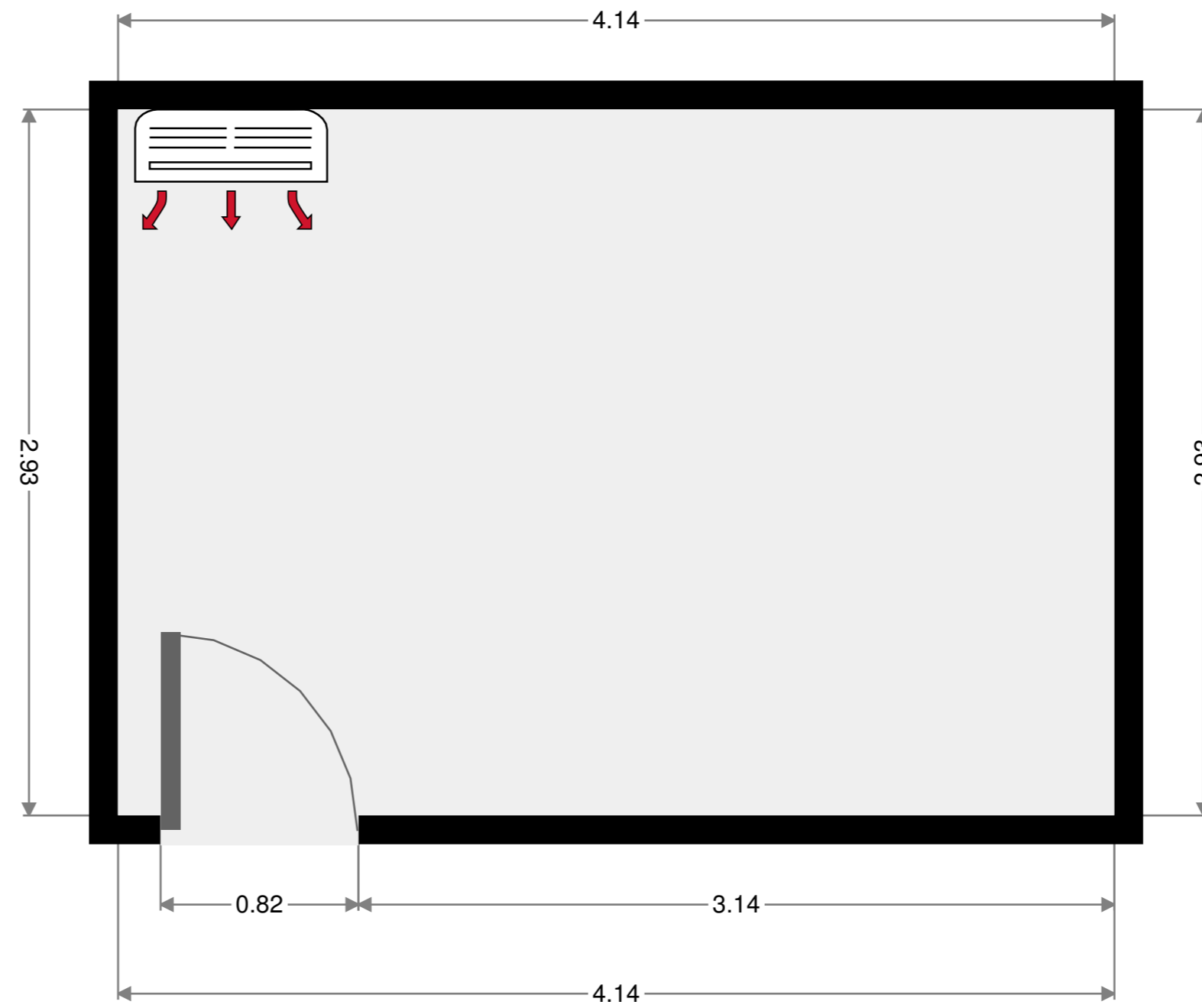
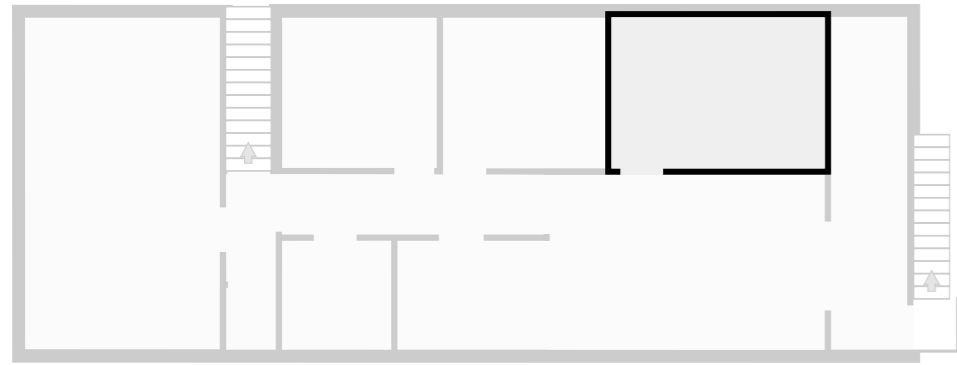
Kitchen

Width: 2.11 m
 Length: 2.83 m
 Area: 5.99 m²
 Perimeter: 9.89 m
 Ceiling Height: 2.17 m



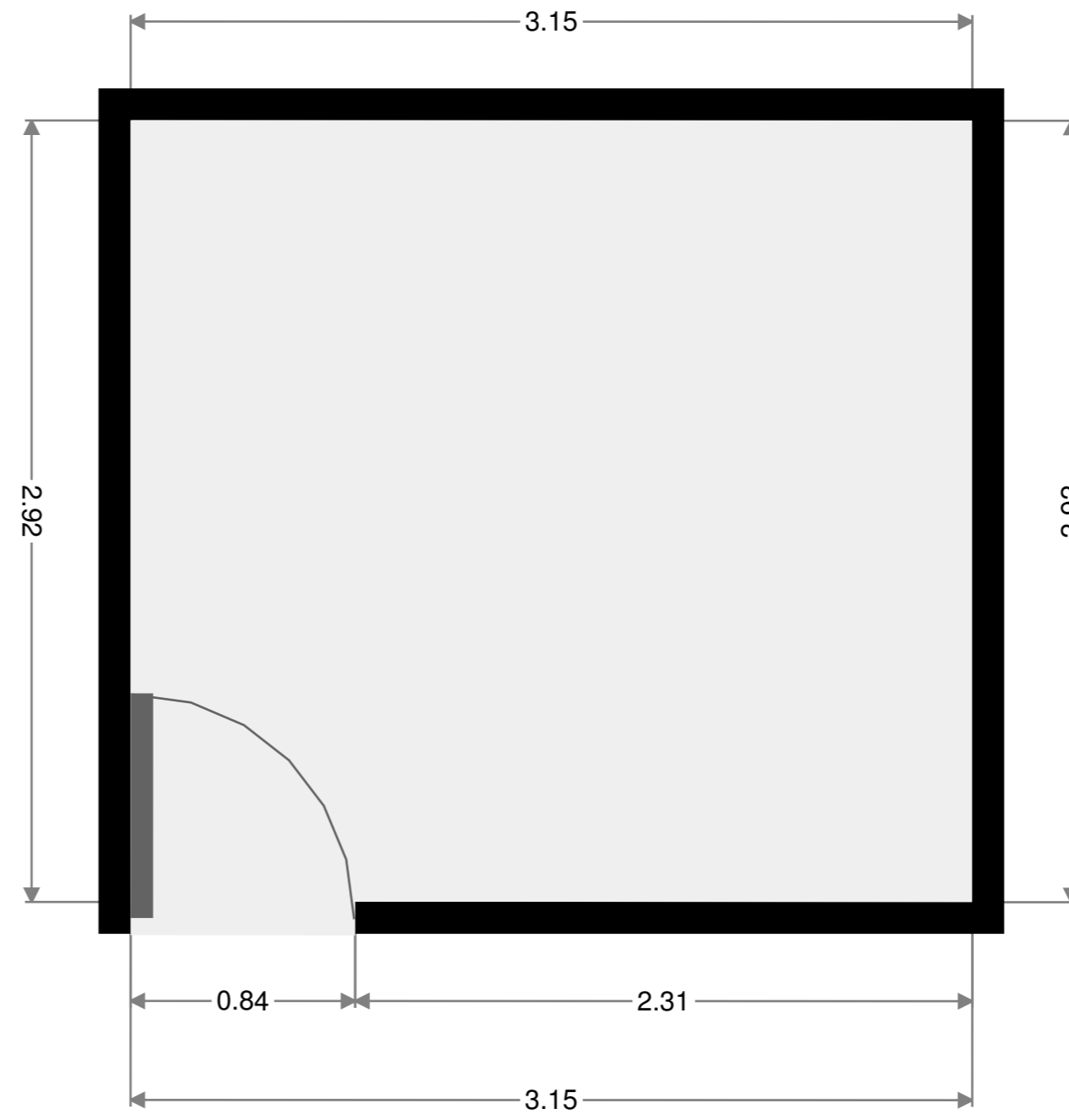
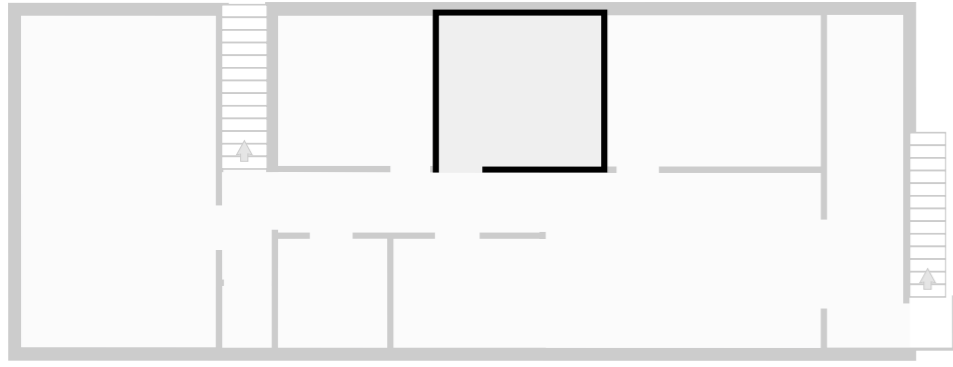
Bedroom

Width: 2.93 m
 Length: 4.14 m
 Area: 12.13 m²
 Perimeter: 14.14 m
 Ceiling Height: 2.17 m



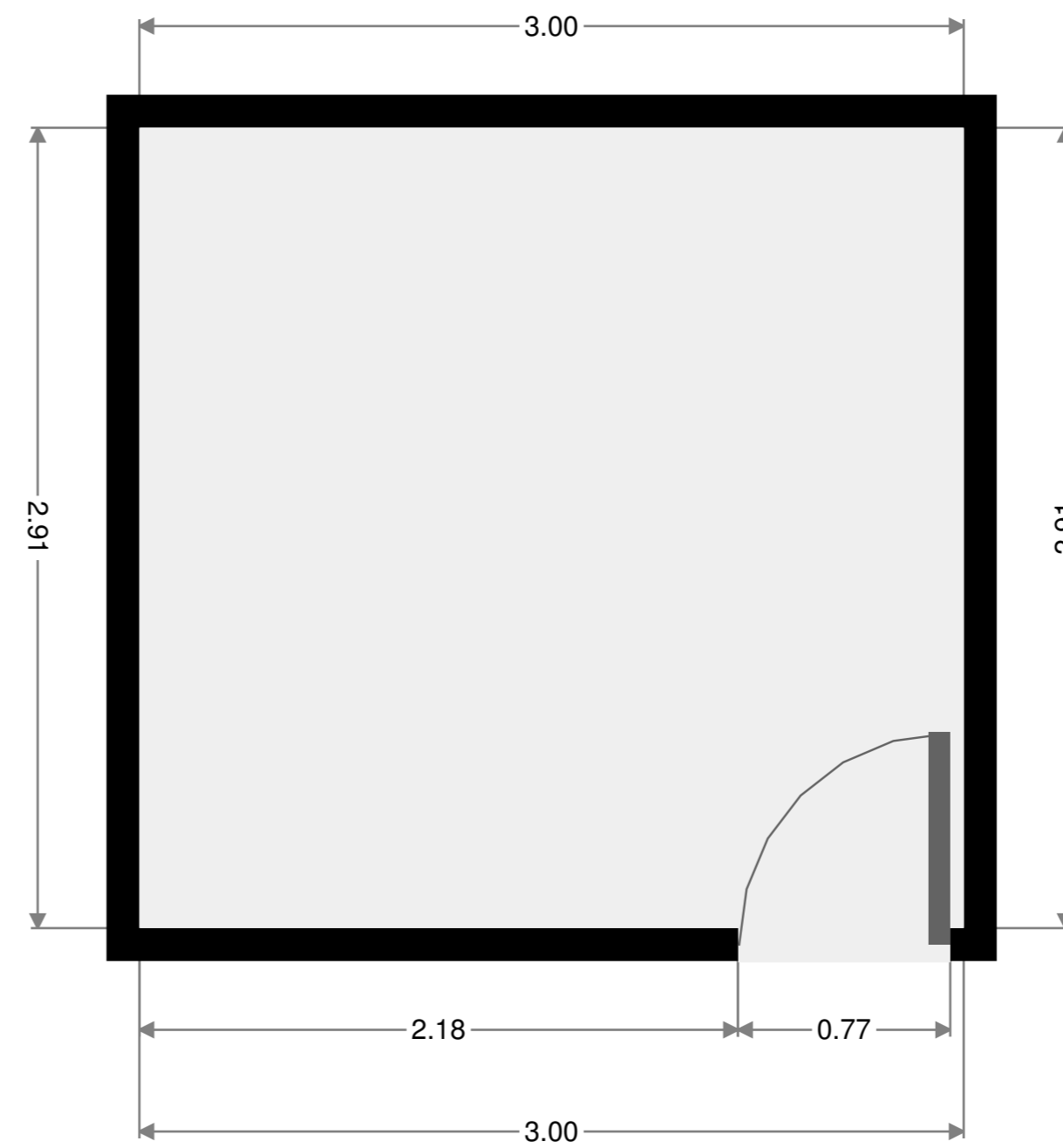
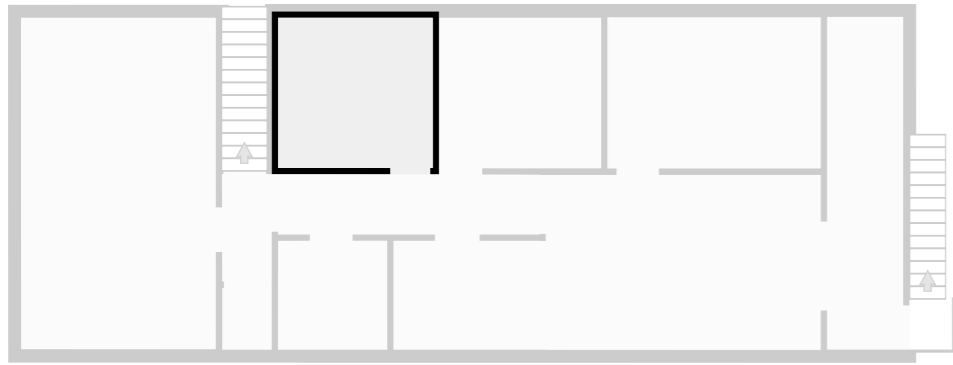
Bedroom

Width: 2.92 m
 Length: 3.15 m
 Area: 9.19 m²
 Perimeter: 12.13 m
 Ceiling Height: 2.17 m



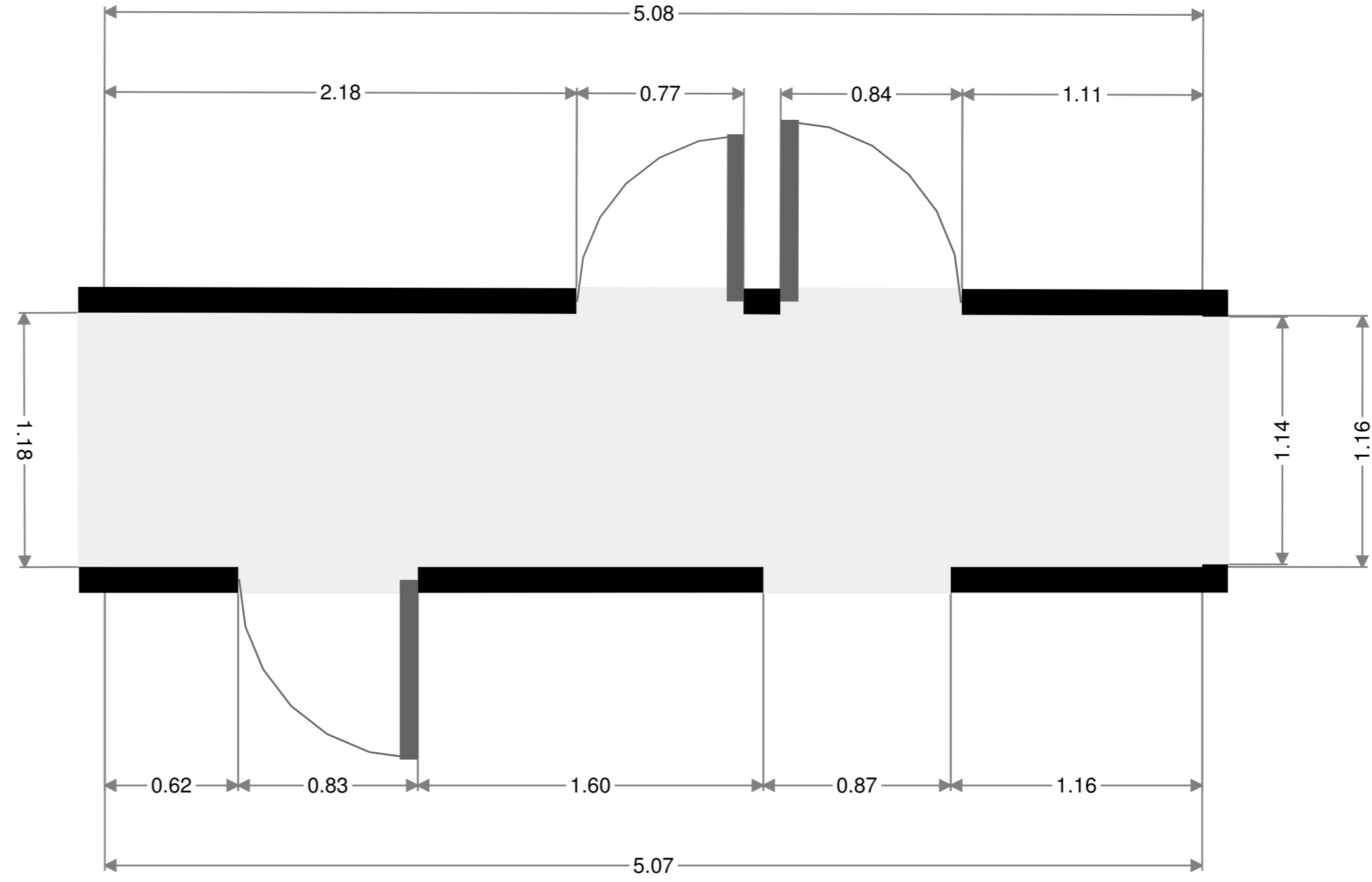
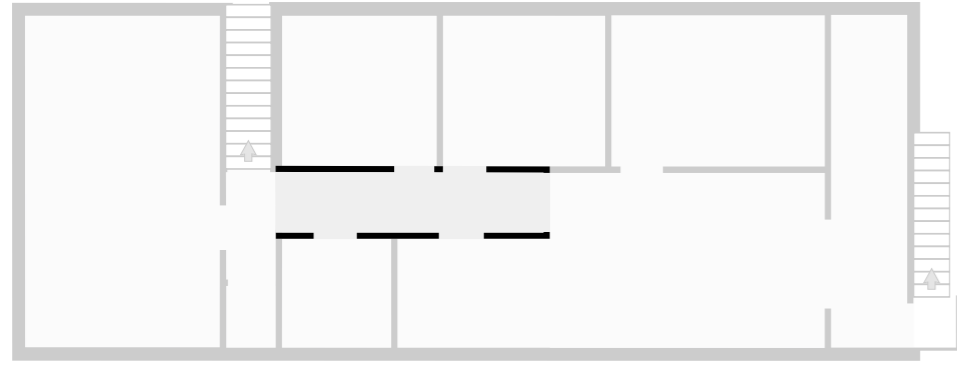
Bedroom

Width: 2.91 m
 Length: 3.00 m
 Area: 8.74 m²
 Perimeter: 11.82 m
 Ceiling Height: 2.17 m



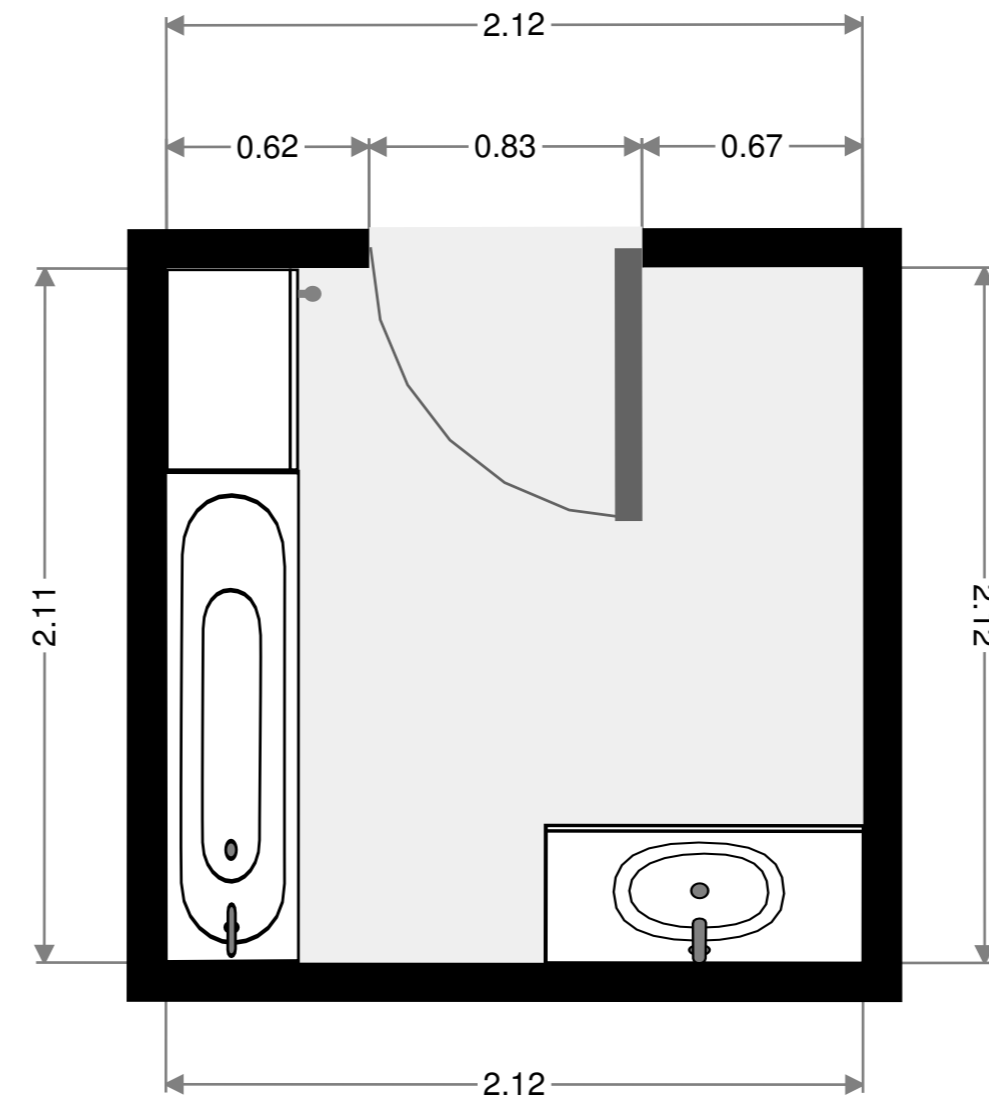
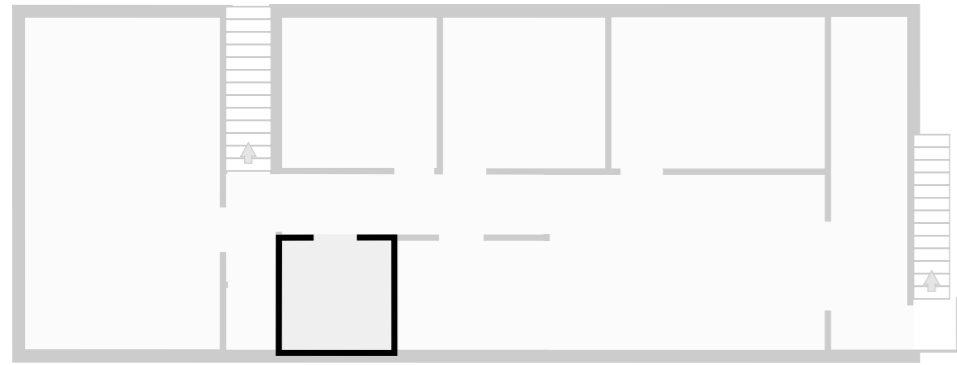
Hall

Width: 1.17 m
 Length: 5.08 m
 Area: 5.93 m²
 Perimeter: 12.49 m
 Ceiling Height: 2.17 m



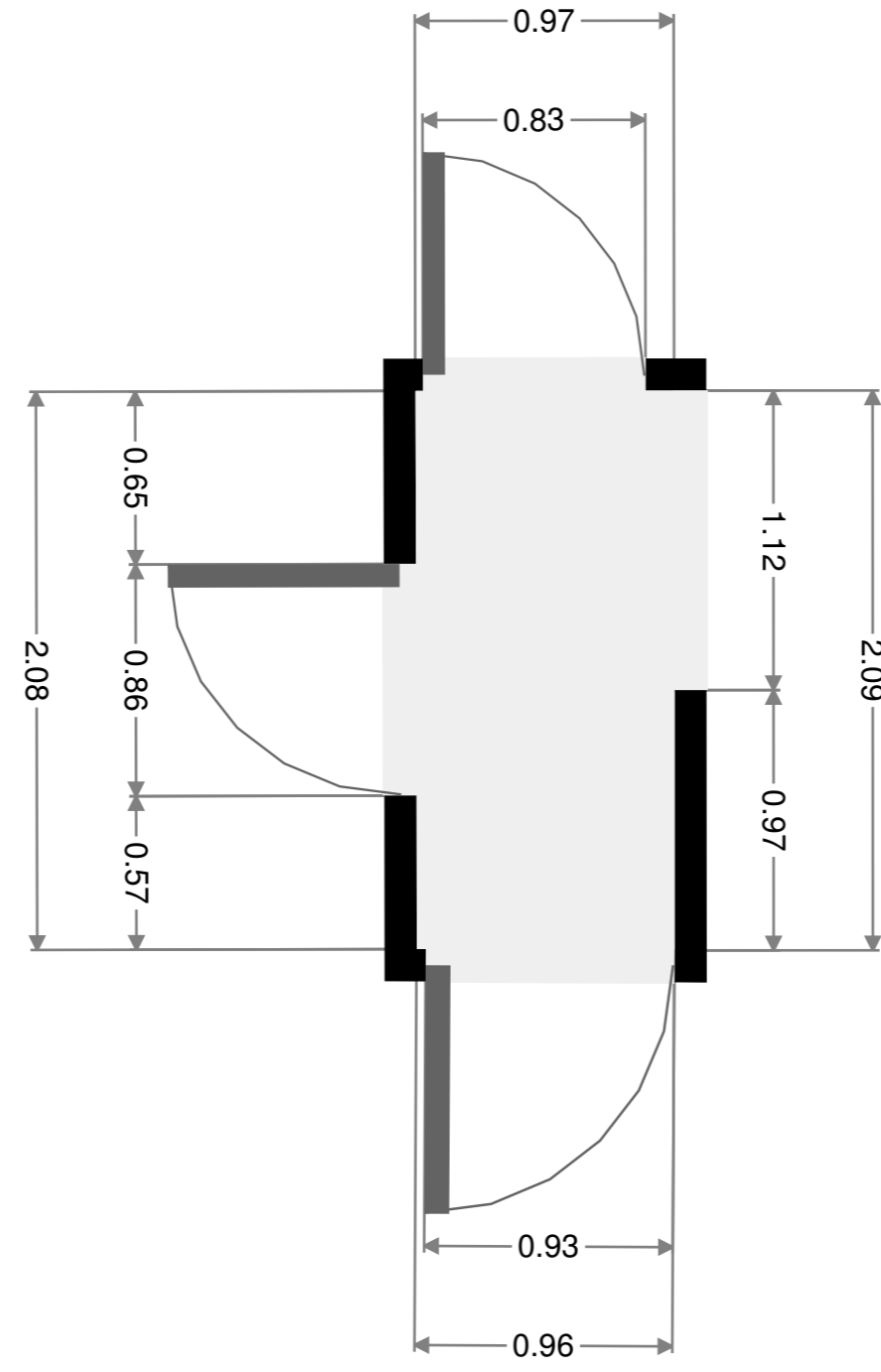
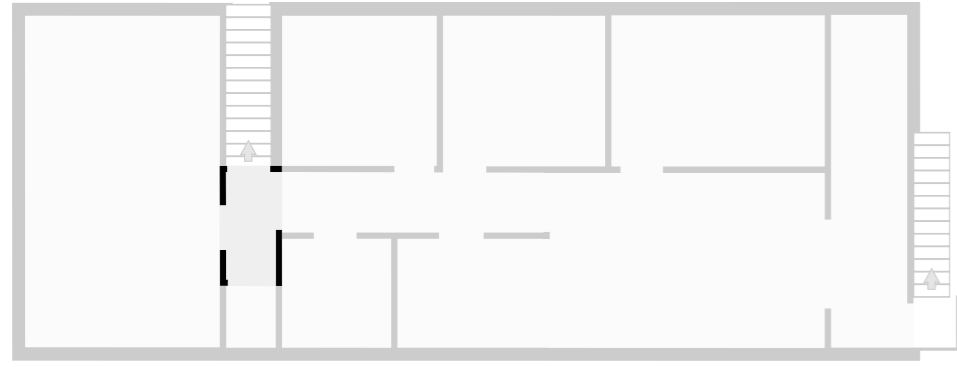
Bathroom

Width: 2.11 m
 Length: 2.12 m
 Area: 4.48 m²
 Perimeter: 8.46 m
 Ceiling Height: 2.17 m



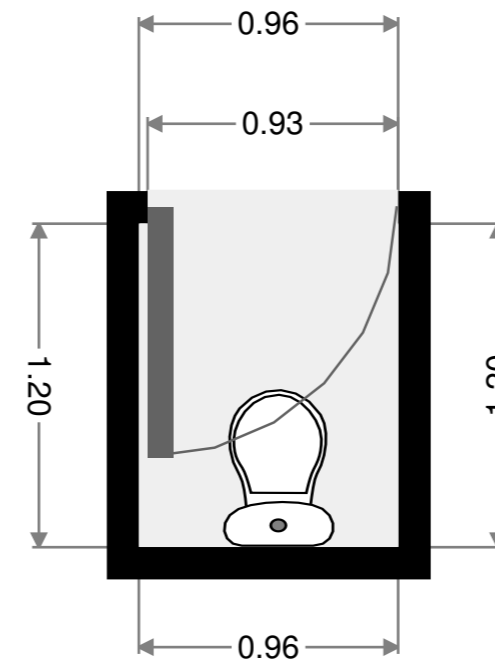
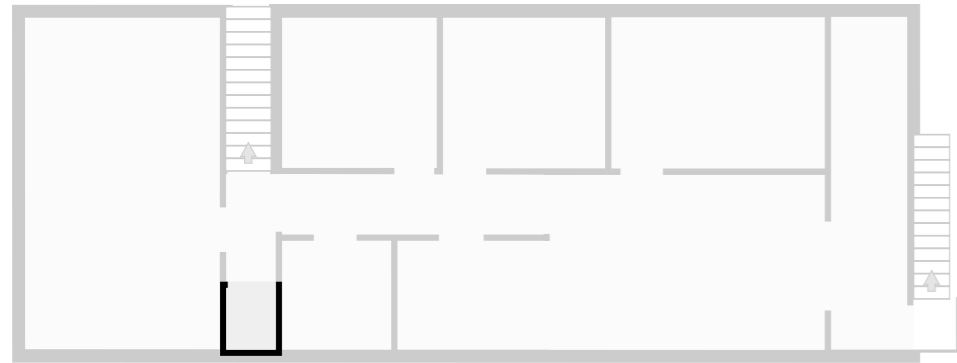
Hall

Width: 0.97 m
 Length: 2.08 m
 Area: 2.01 m²
 Perimeter: 6.10 m
 Ceiling Height: 2.17 m



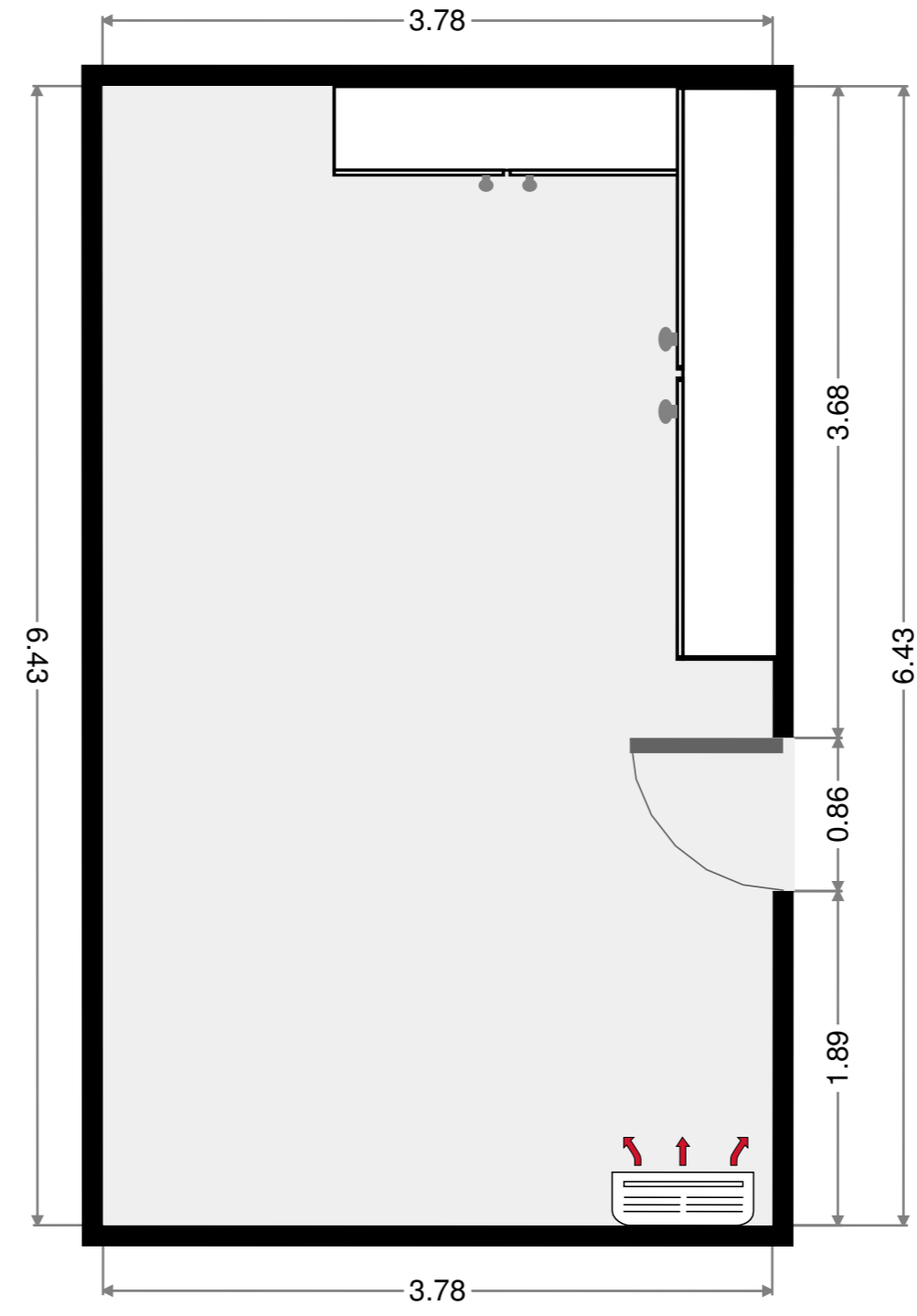
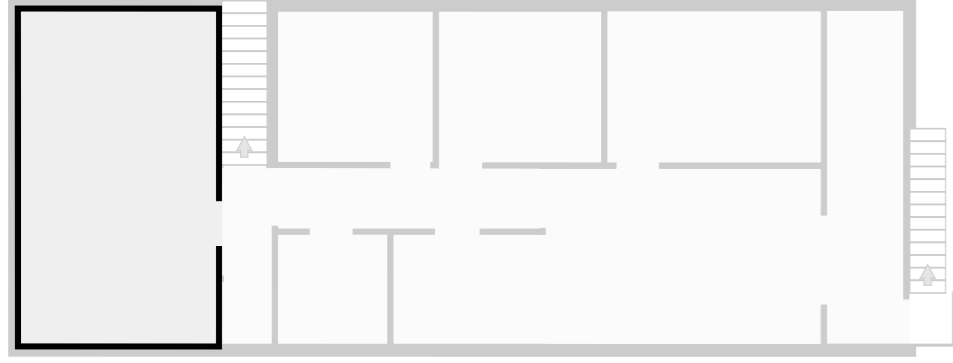
Toilet

Width: 0.96 m
 Length: 1.20 m
 Area: 1.15 m²
 Perimeter: 4.32 m



Bedroom

Width: 3.78 m
 Length: 6.43 m
 Area: 24.29 m²
 Perimeter: 20.41 m
 Ceiling Height: 2.17 m



Balcony

Width: 0.83 m
 Length: 0.95 m
 Area: 0.79 m²
 Perimeter: 3.56 m

