

# 5 Vyner Street

**SUBMITTED BY**  
Ray White Rockhampton Casey  
stockers@cqoz.com

---

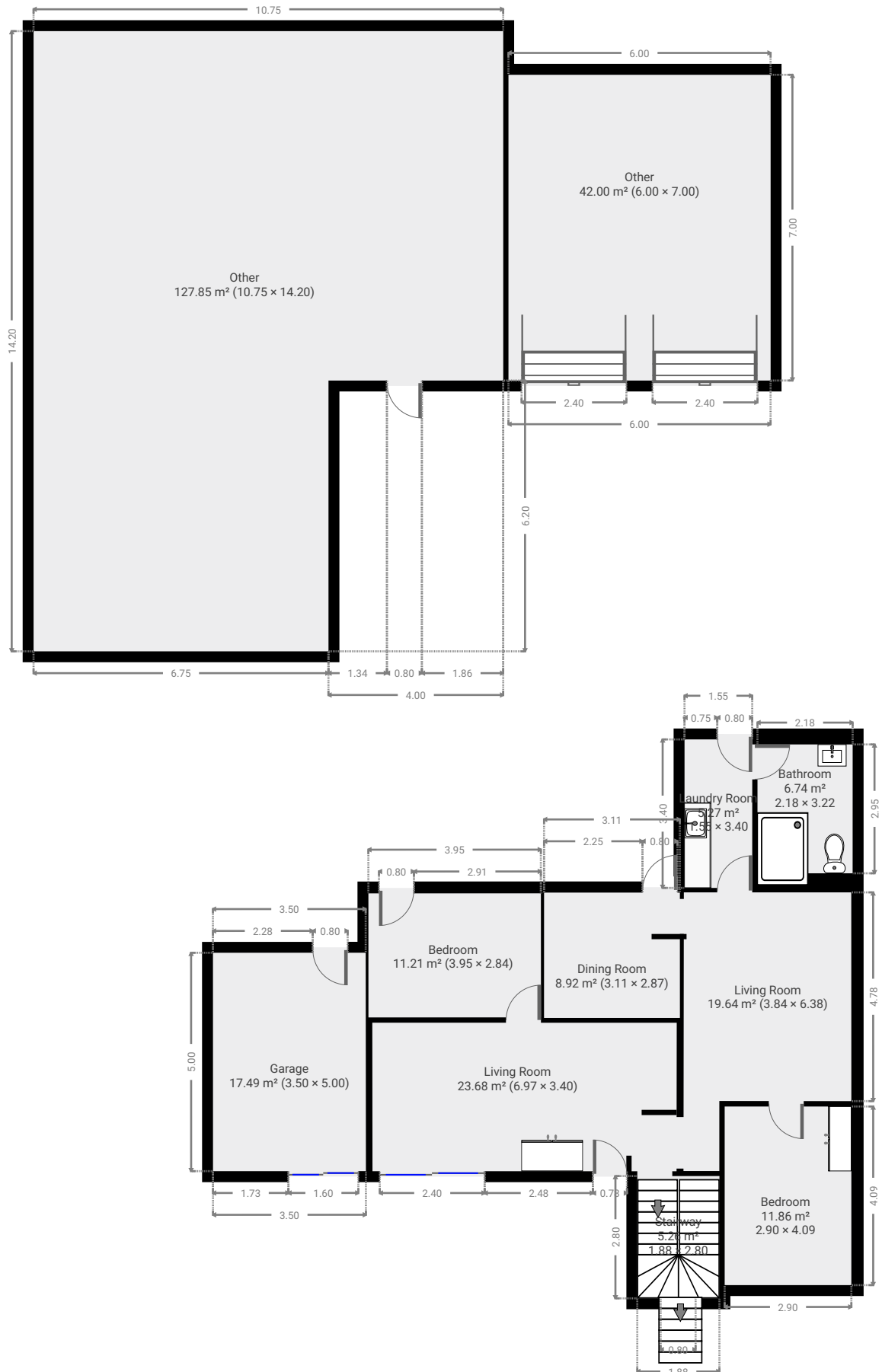
**CREATED ON**  
2022-07-12

---

**Floors**  
2

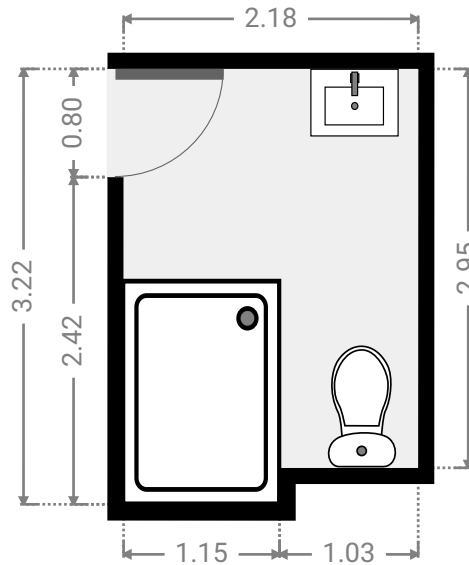
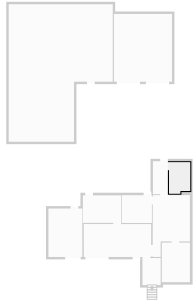
---

## ▼ Ground Floor



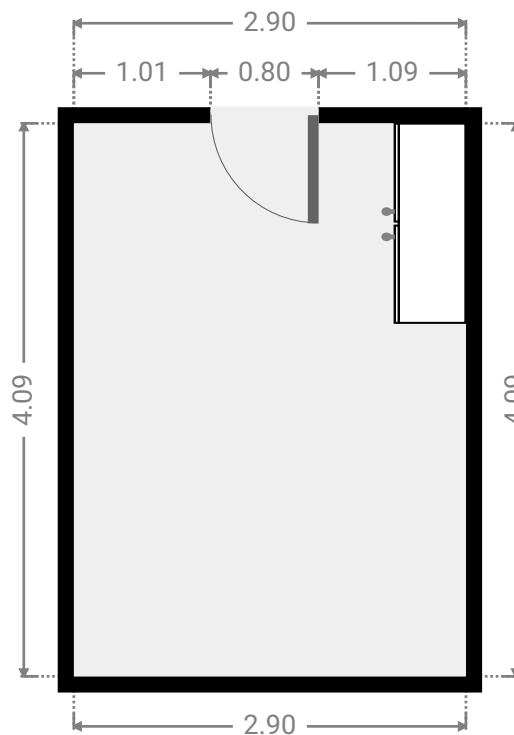
▼ **Bathroom**  
Ground Floor

WIDTH: 2.18 m • LENGTH: 3.22 m  
AREA: 6.74 m<sup>2</sup> • PERIMETER: 10.80 m



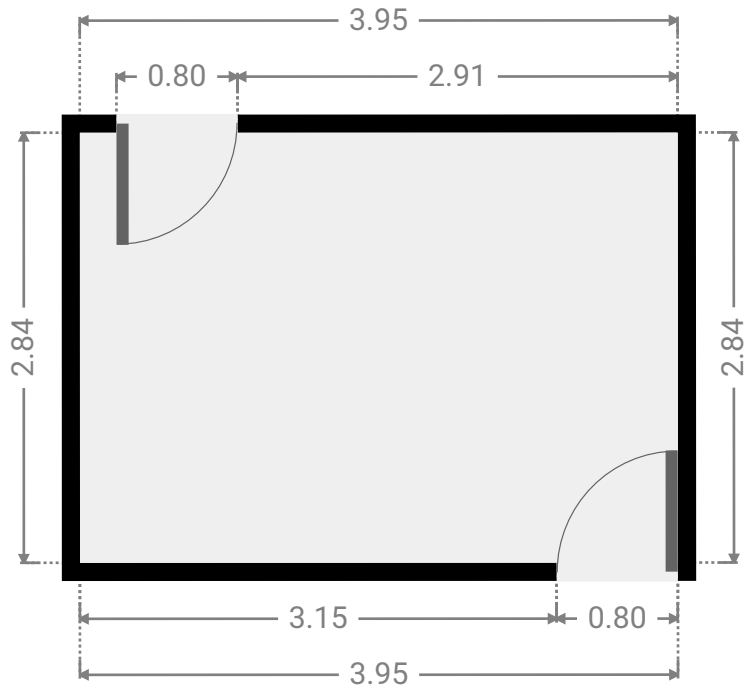
▼ **Bedroom**  
Ground Floor

WIDTH: 2.90 m • LENGTH: 4.09 m  
AREA: 11.86 m<sup>2</sup> • PERIMETER: 13.98 m



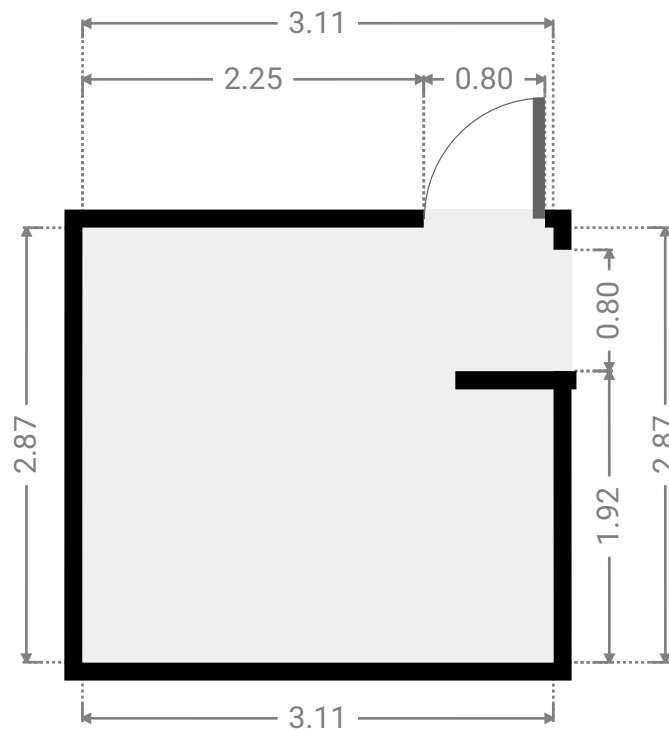
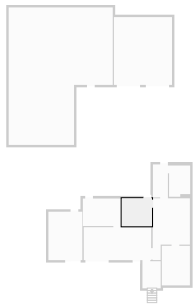
▼ **Bedroom**  
Ground Floor

WIDTH: 3.95 m • LENGTH: 2.84 m  
AREA: 11.21 m<sup>2</sup> • PERIMETER: 13.58 m



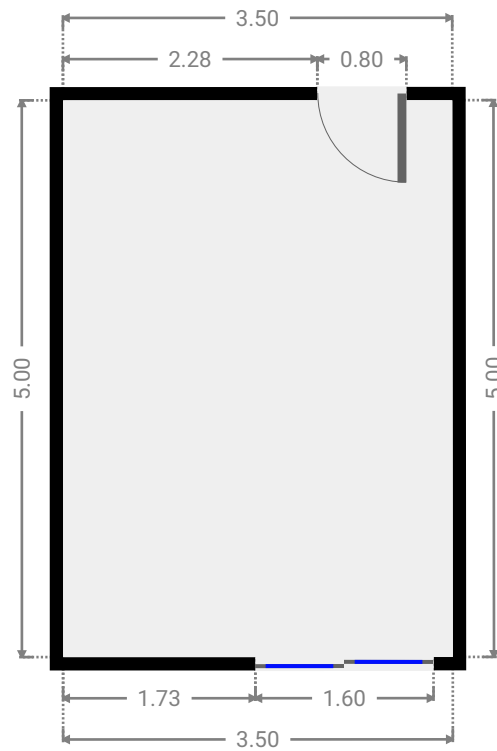
▼ **Dining Room**  
Ground Floor

WIDTH: 3.11 m • LENGTH: 2.87 m  
AREA: 8.92 m<sup>2</sup> • PERIMETER: 11.96 m



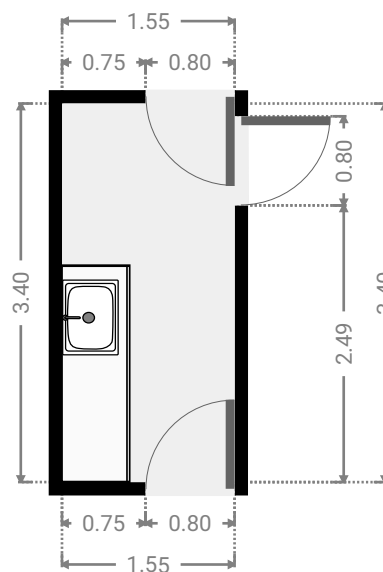
## ▼ Garage Ground Floor

WIDTH: 3.50 m • LENGTH: 5.00 m  
AREA: 17.49 m<sup>2</sup> • PERIMETER: 17.00 m



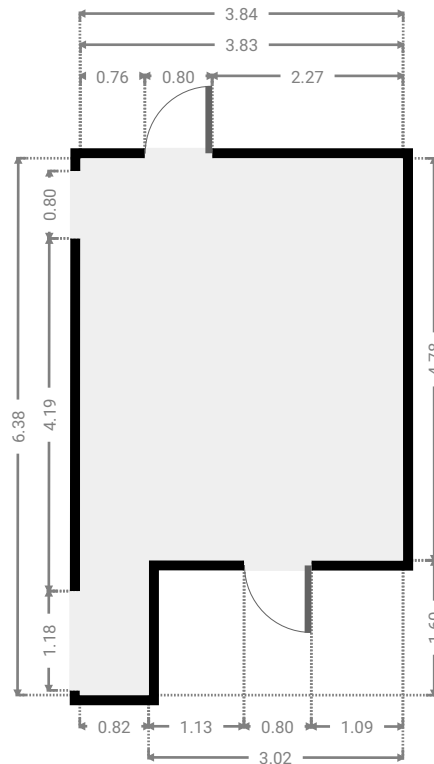
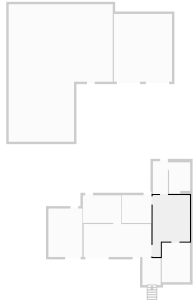
## ▼ Laundry Room Ground Floor

WIDTH: 1.55 m • LENGTH: 3.40 m  
AREA: 5.27 m<sup>2</sup> • PERIMETER: 9.90 m



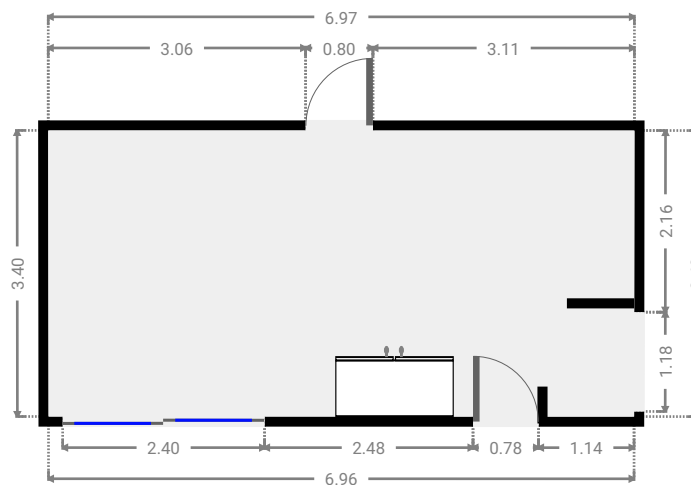
## ▼ Living Room Ground Floor

WIDTH: 3.84 m • LENGTH: 6.38 m  
AREA: 19.64 m<sup>2</sup> • PERIMETER: 20.44 m



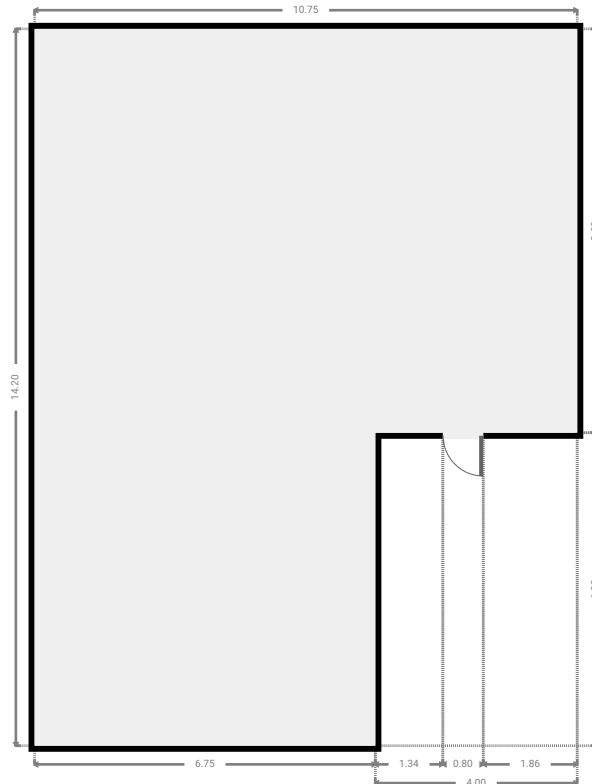
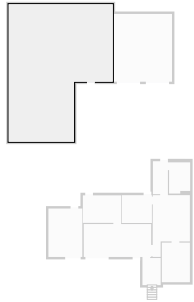
## ▼ Living Room Ground Floor

WIDTH: 6.97 m • LENGTH: 3.40 m  
AREA: 23.68 m<sup>2</sup> • PERIMETER: 20.73 m



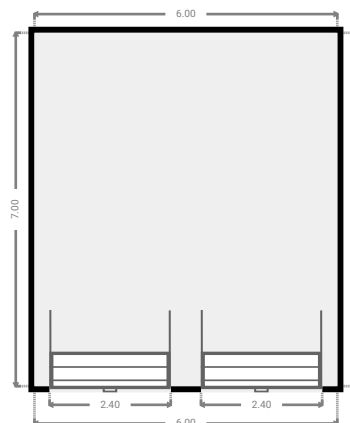
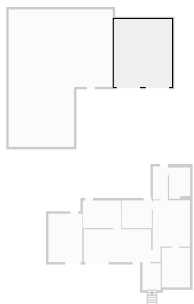
## ▼ Other Ground Floor

WIDTH: 10.75 m • LENGTH: 14.20 m  
AREA: 127.85 m<sup>2</sup> • PERIMETER: 49.90 m



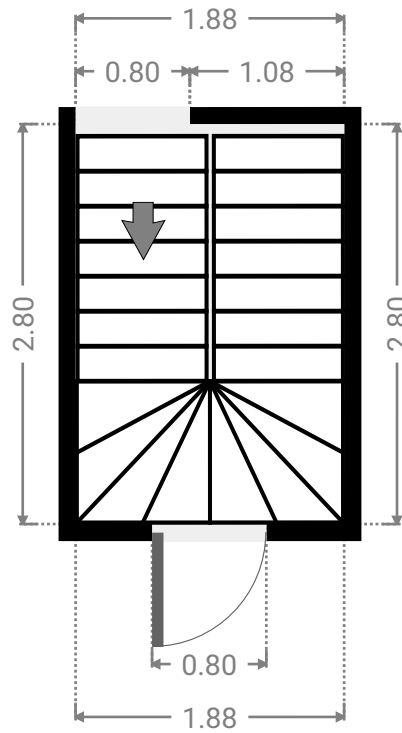
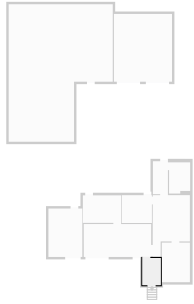
## ▼ Other Ground Floor

WIDTH: 6.00 m • LENGTH: 7.00 m  
AREA: 42.00 m<sup>2</sup> • PERIMETER: 26.00 m



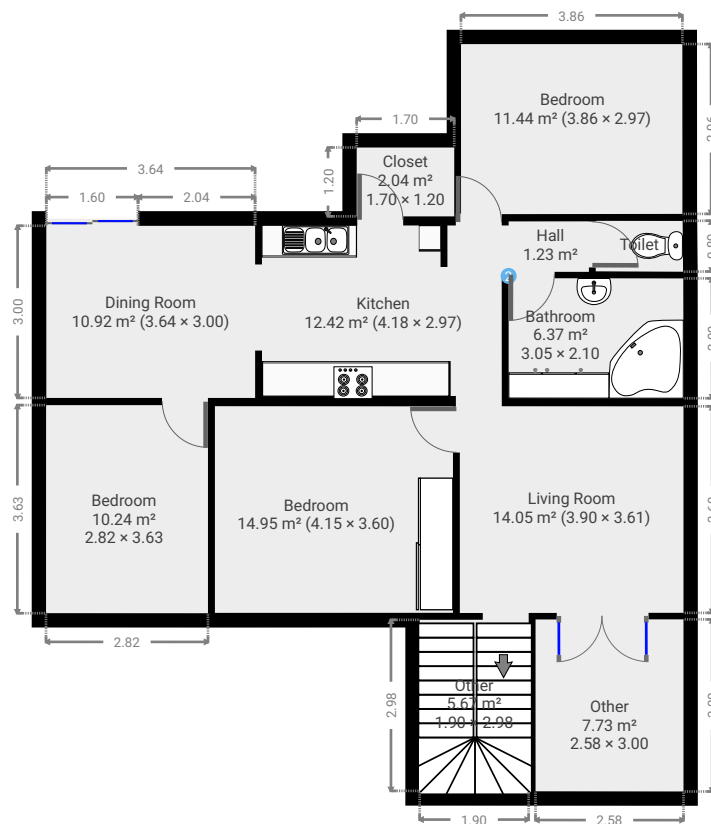
▼ Stairway  
Ground Floor

WIDTH: 1.88 m • LENGTH: 2.80 m  
AREA: 5.26 m<sup>2</sup> • PERIMETER: 9.36 m



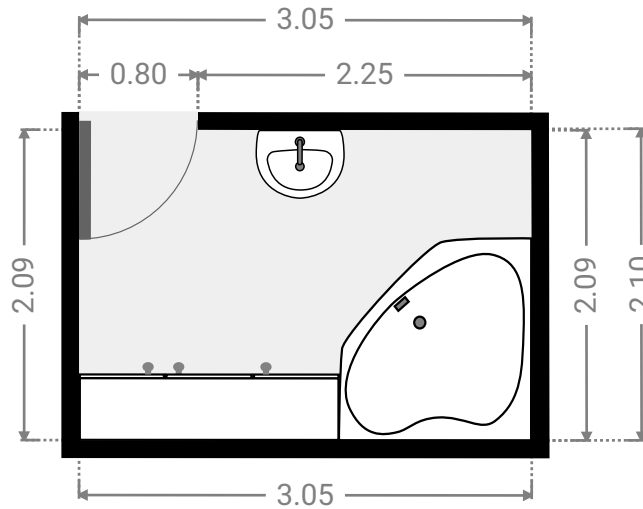
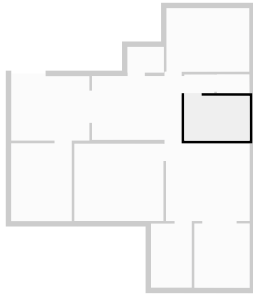


## ▼ 1st Floor



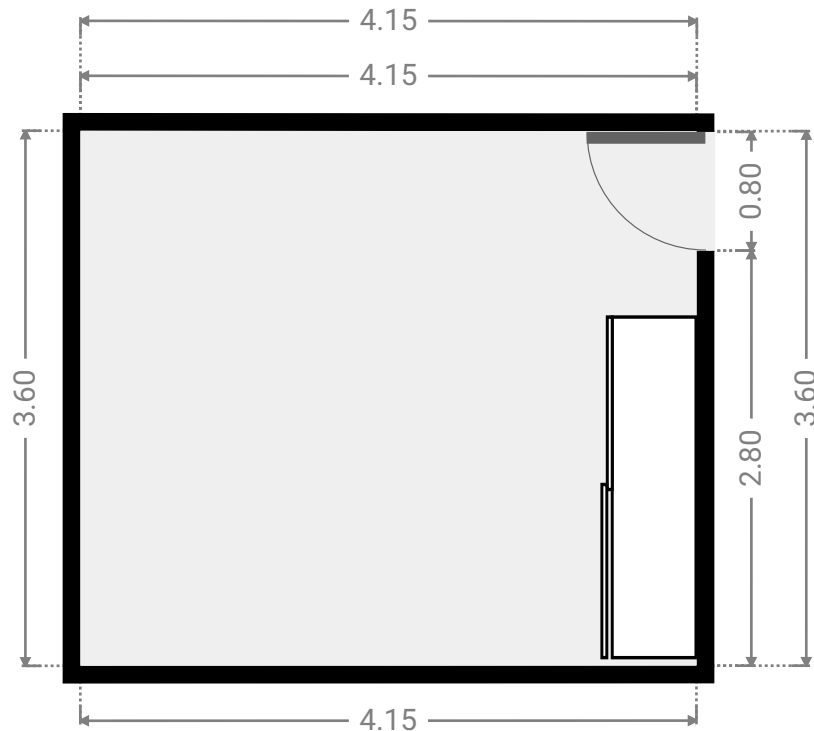
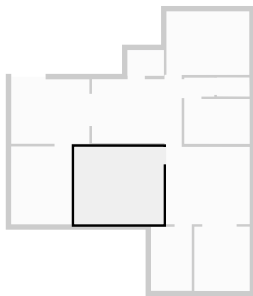
▼ **Bathroom**  
1st Floor

WIDTH: 3.05 m • LENGTH: 2.10 m  
AREA: 6.37 m<sup>2</sup> • PERIMETER: 10.27 m



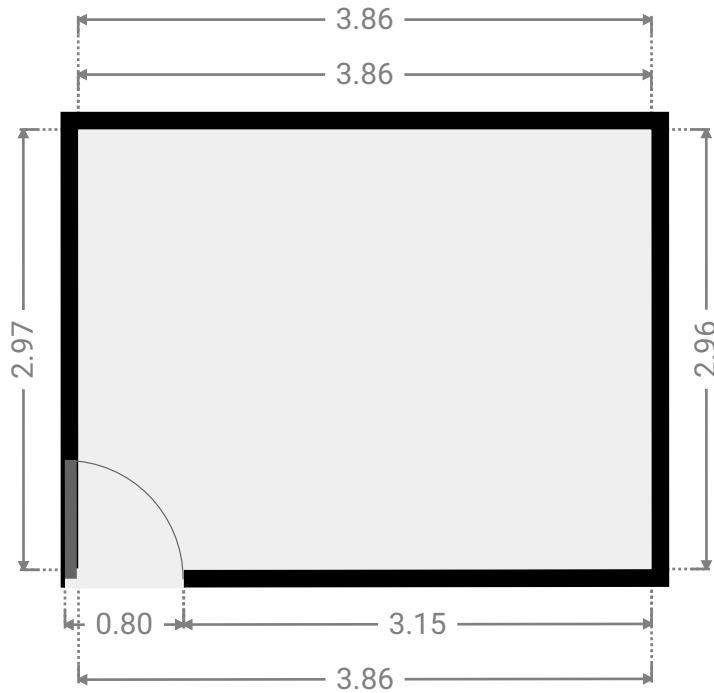
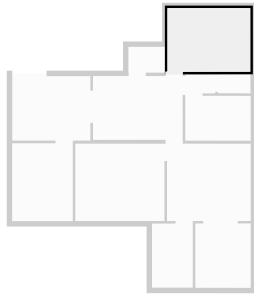
▼ **Bedroom**  
1st Floor

WIDTH: 4.15 m • LENGTH: 3.60 m  
AREA: 14.95 m<sup>2</sup> • PERIMETER: 15.50 m



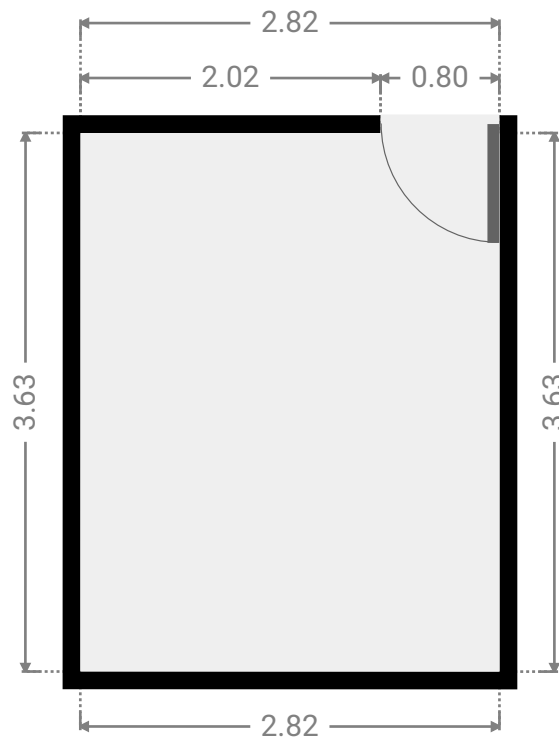
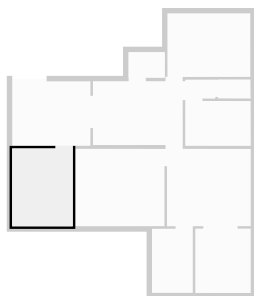
▼ **Bedroom**  
1st Floor

WIDTH: 3.86 m • LENGTH: 2.97 m  
AREA: 11.44 m<sup>2</sup> • PERIMETER: 13.65 m



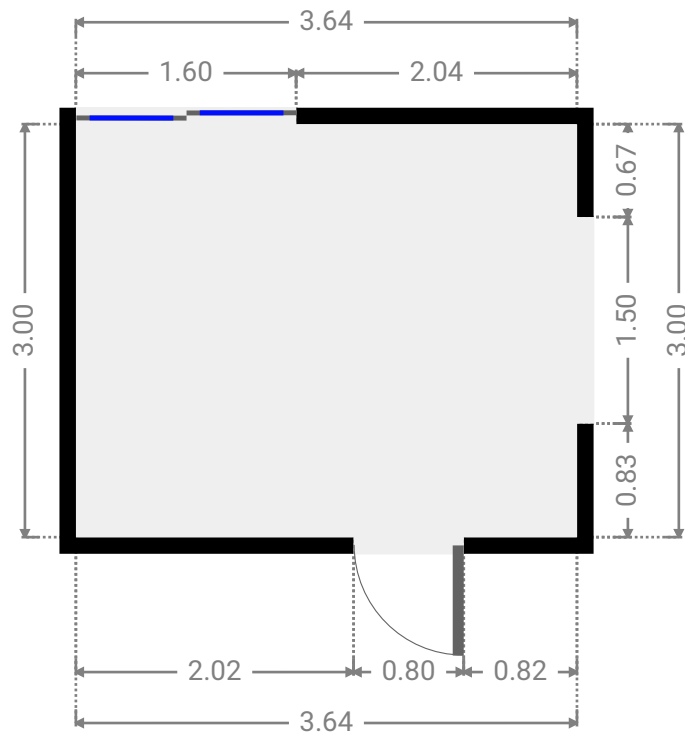
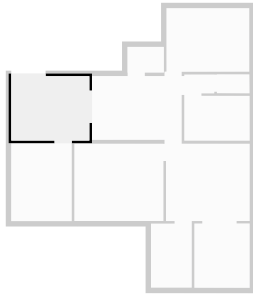
▼ **Bedroom**  
1st Floor

WIDTH: 2.82 m • LENGTH: 3.63 m  
AREA: 10.24 m<sup>2</sup> • PERIMETER: 12.90 m



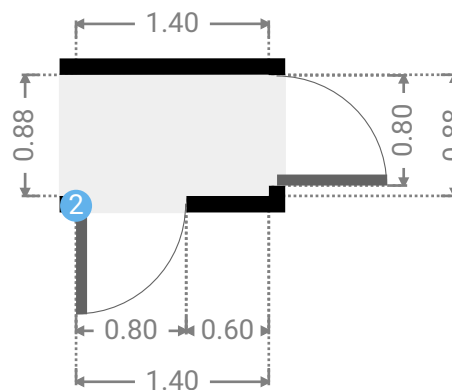
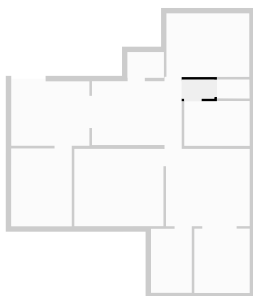
## ▼ Dining Room 1st Floor

WIDTH: 3.64 m • LENGTH: 3.00 m  
AREA: 10.92 m<sup>2</sup> • PERIMETER: 13.28 m



## ▼ Hall 1st Floor

WIDTH: 1.40 m • LENGTH: 0.88 m  
AREA: 1.23 m<sup>2</sup> • PERIMETER: 4.56 m



▼ Hall/1st Floor

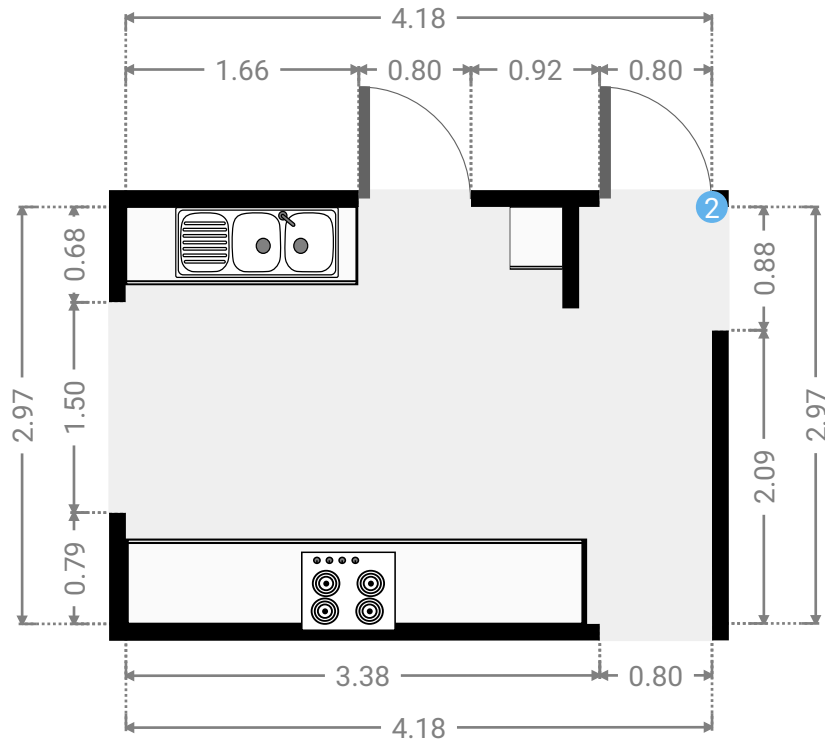
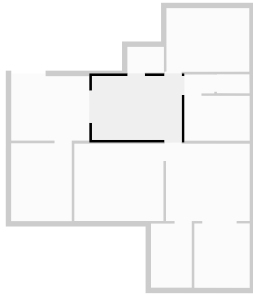
2 OPENING

Height  
0.00 m



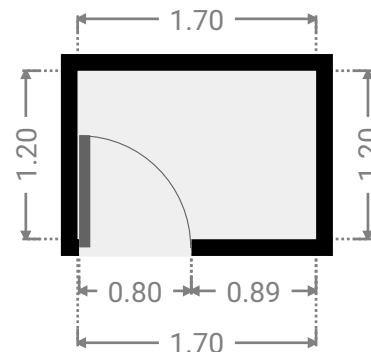
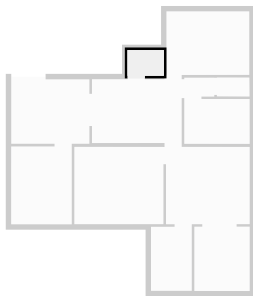
▼ **Kitchen**  
1st Floor

WIDTH: 4.18 m • LENGTH: 2.97 m  
AREA: 12.42 m<sup>2</sup> • PERIMETER: 14.30 m



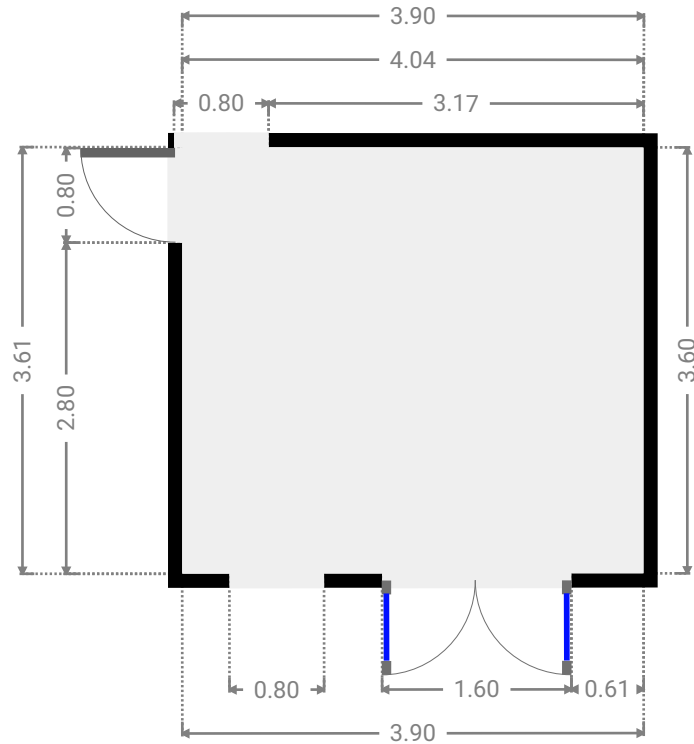
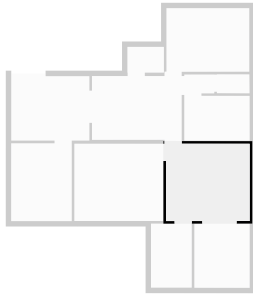
▼ **Closet**  
1st Floor

WIDTH: 1.70 m • LENGTH: 1.20 m  
AREA: 2.04 m<sup>2</sup> • PERIMETER: 5.80 m



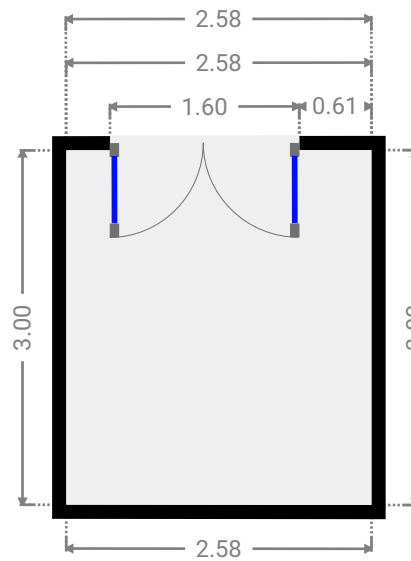
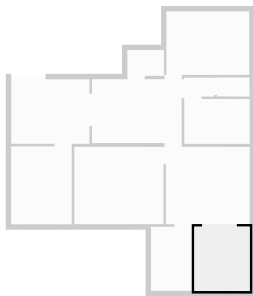
▼ **Living Room**  
1st Floor

WIDTH: 3.90 m • LENGTH: 3.61 m  
AREA: 14.05 m<sup>2</sup> • PERIMETER: 15.01 m



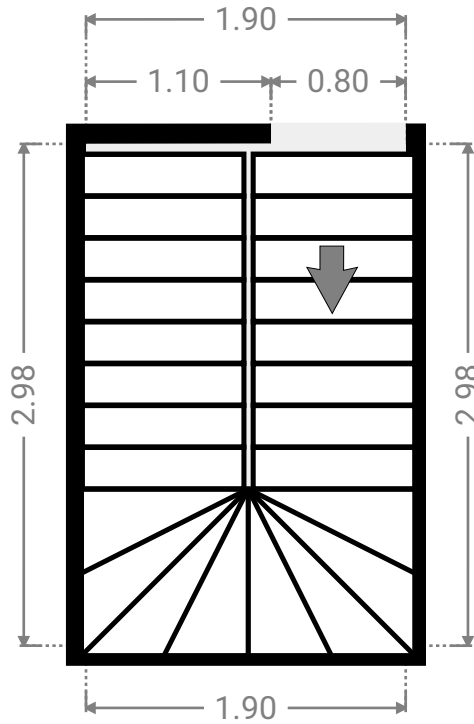
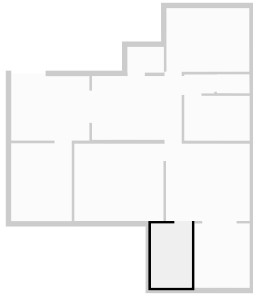
▼ **Other**  
1st Floor

WIDTH: 2.58 m • LENGTH: 3.00 m  
AREA: 7.73 m<sup>2</sup> • PERIMETER: 11.15 m



▼ **Other**  
1st Floor

WIDTH: 1.90 m • LENGTH: 2.98 m  
AREA: 5.67 m<sup>2</sup> • PERIMETER: 9.76 m



▼ **Toilet**  
1st Floor

WIDTH: 1.53 m • LENGTH: 0.89 m  
AREA: 1.34 m<sup>2</sup> • PERIMETER: 4.80 m

