

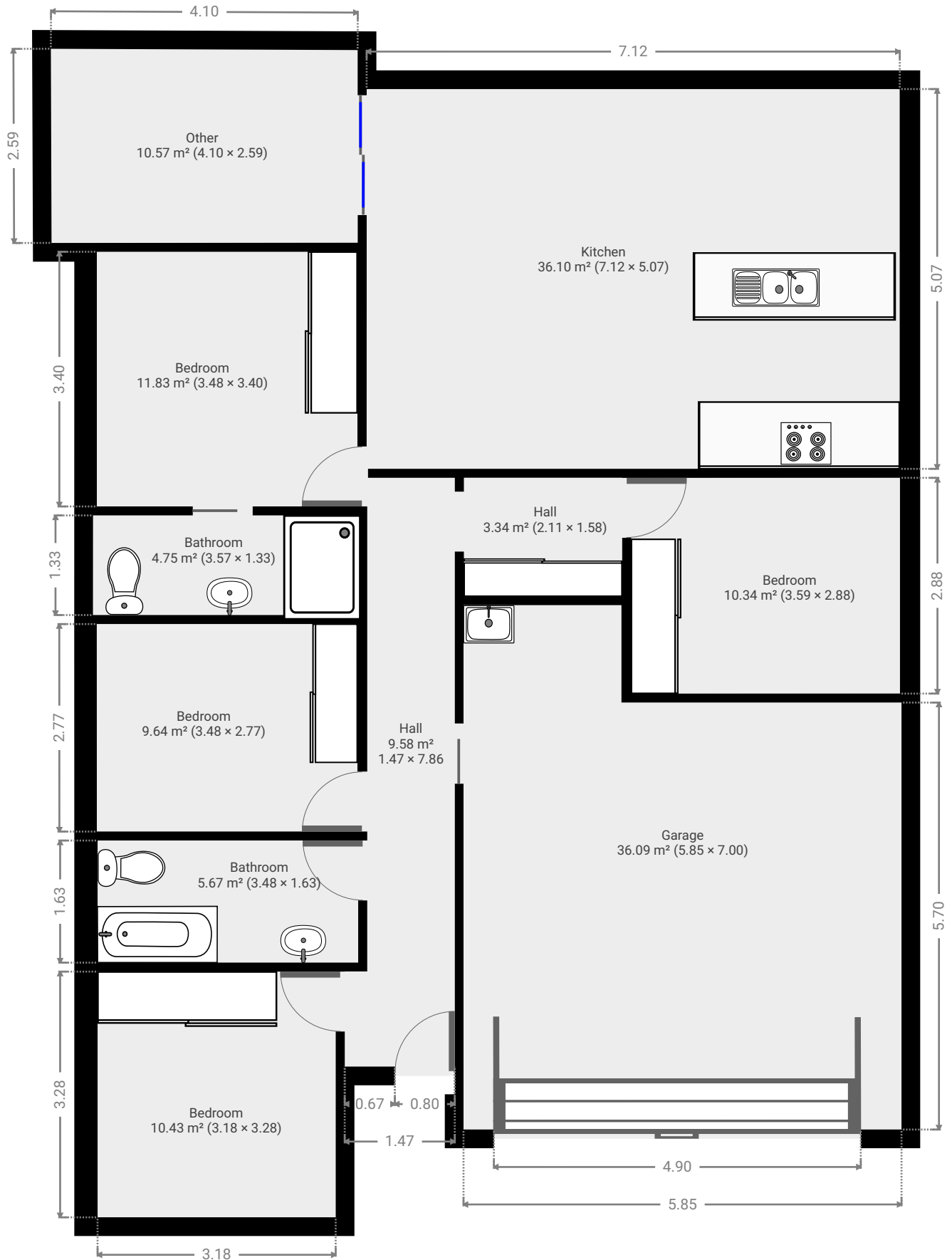
5 Sylvana Avenue

SUBMITTED BY
Ray White Rockhampton Casey
stockers@cqoz.com

CREATED ON
2022-08-17

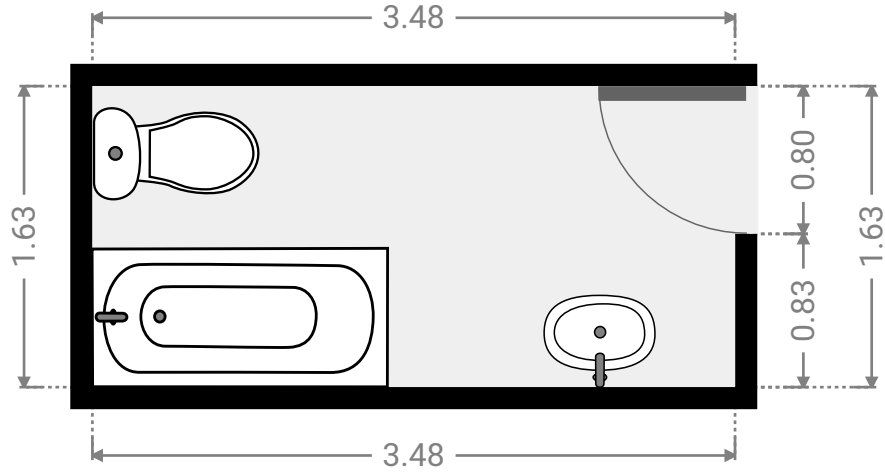
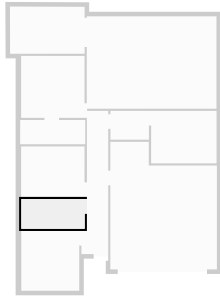
Floors
1

▼ Ground Floor



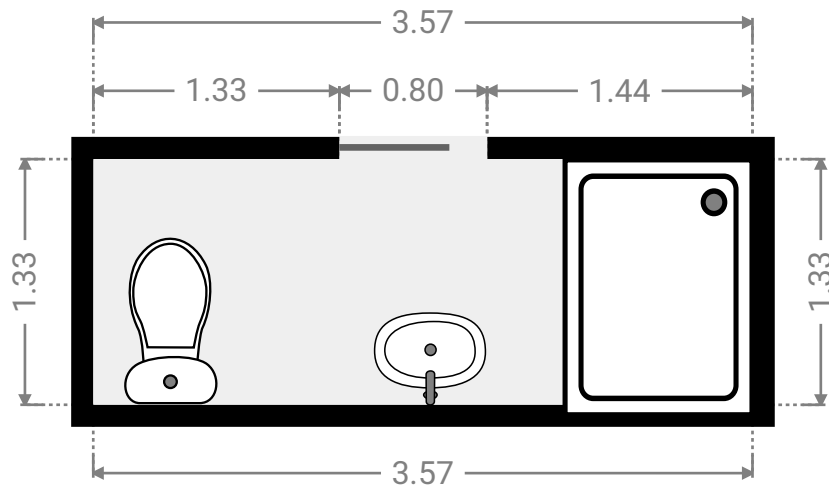
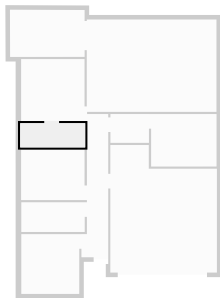
▼ **Bathroom**
Ground Floor

WIDTH: 3.48 m • LENGTH: 1.63 m
AREA: 5.67 m² • PERIMETER: 10.22 m



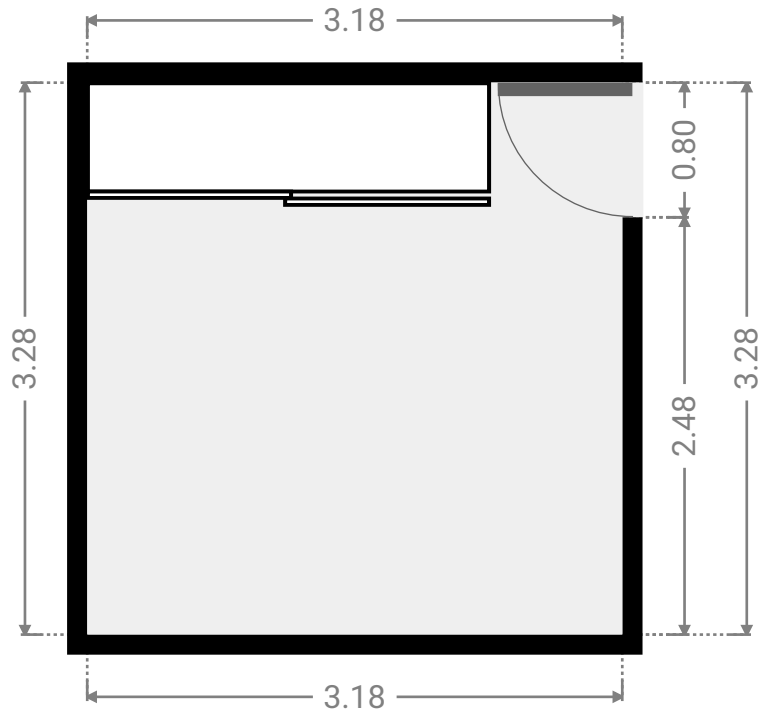
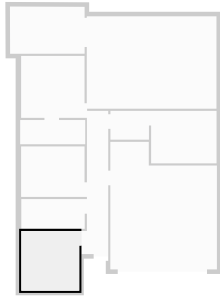
▼ **Bathroom**
Ground Floor

WIDTH: 3.57 m • LENGTH: 1.33 m
AREA: 4.75 m² • PERIMETER: 9.80 m



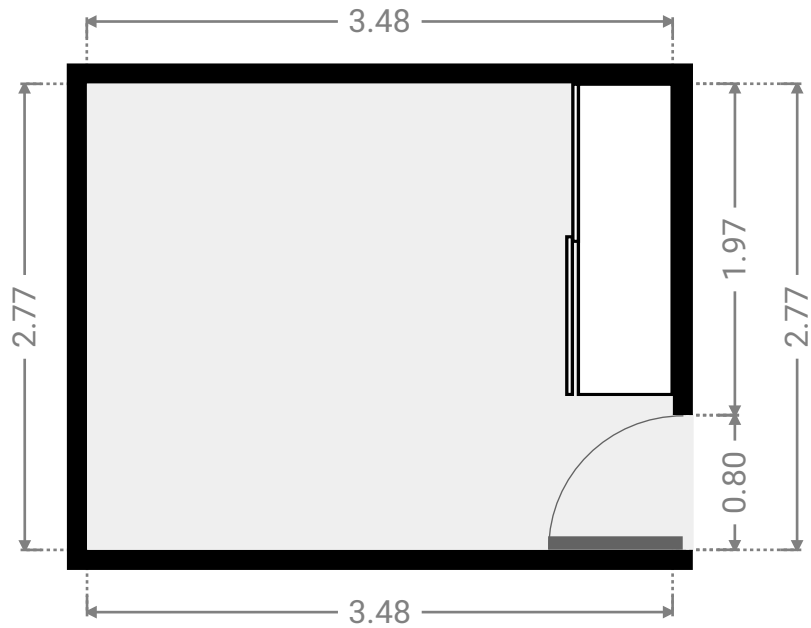
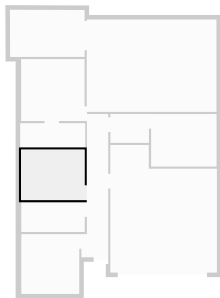
▼ **Bedroom**
Ground Floor

WIDTH: 3.18 m • LENGTH: 3.28 m
AREA: 10.43 m² • PERIMETER: 12.92 m



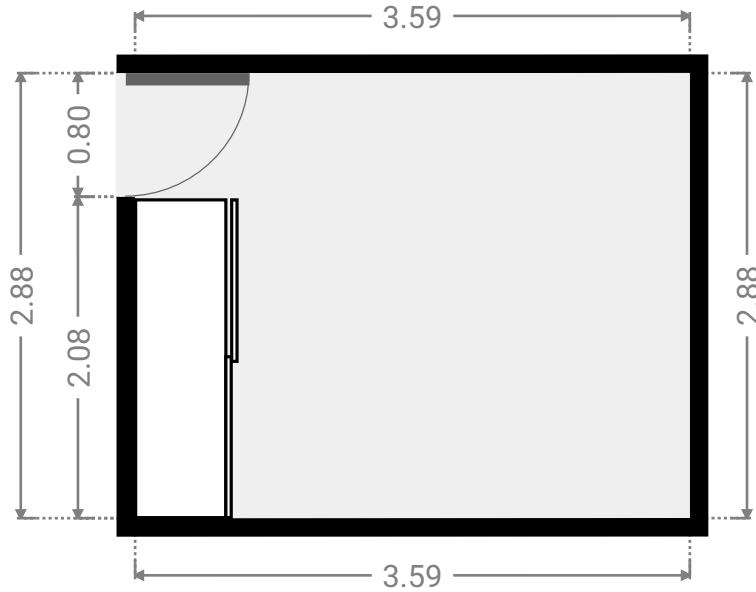
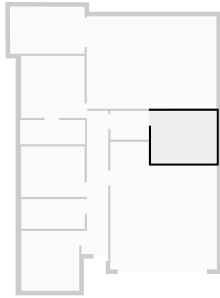
▼ **Bedroom**
Ground Floor

WIDTH: 3.48 m • LENGTH: 2.77 m
AREA: 9.64 m² • PERIMETER: 12.50 m



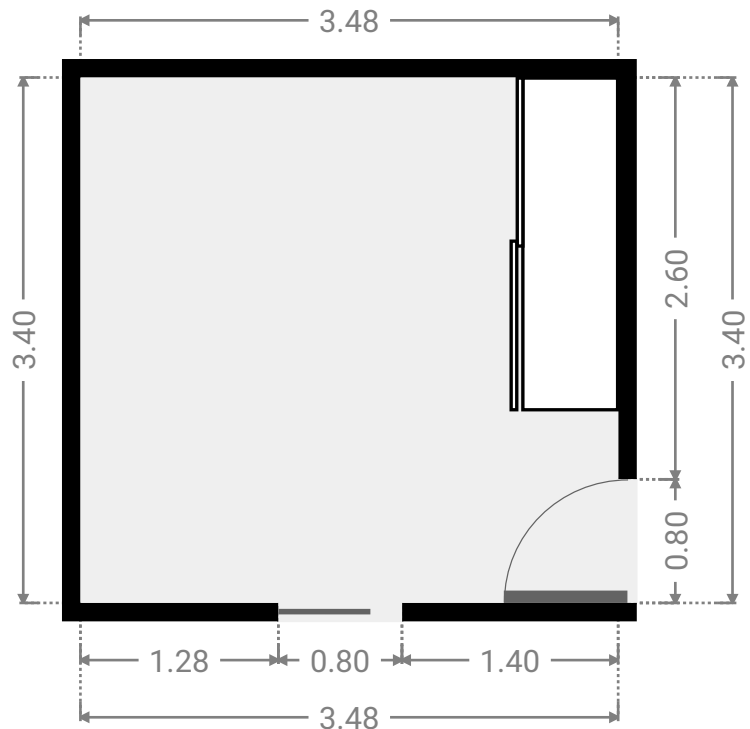
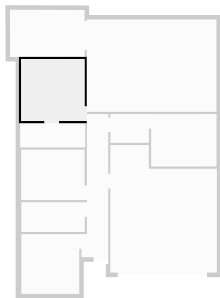
▼ **Bedroom**
Ground Floor

WIDTH: 3.59 m • LENGTH: 2.88 m
AREA: 10.34 m² • PERIMETER: 12.94 m



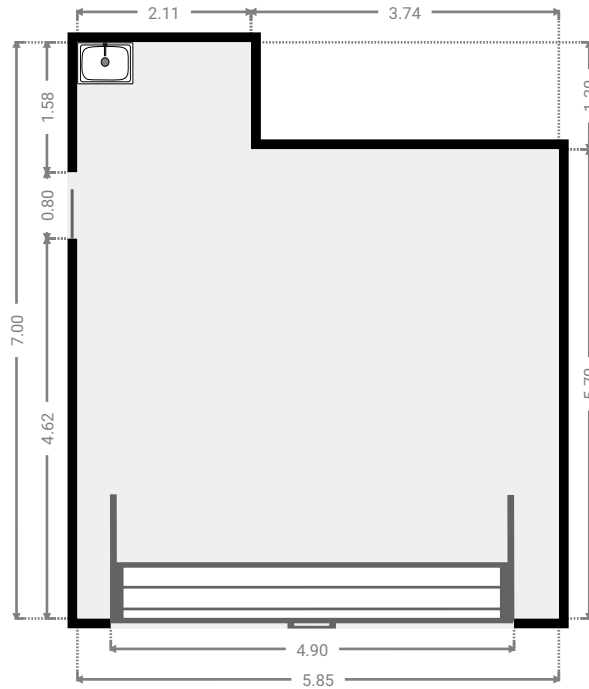
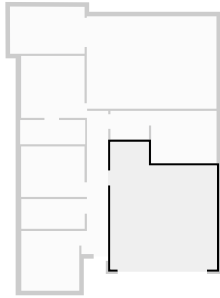
▼ **Bedroom**
Ground Floor

WIDTH: 3.48 m • LENGTH: 3.40 m
AREA: 11.83 m² • PERIMETER: 13.76 m



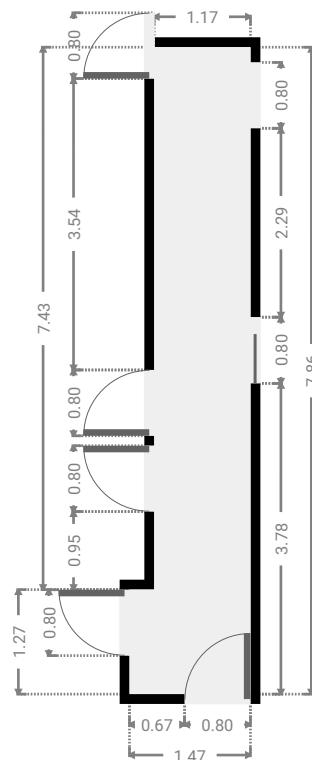
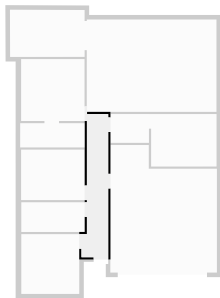
▼ **Garage**
Ground Floor

WIDTH: 5.85 m • LENGTH: 7.00 m
AREA: 36.09 m² • PERIMETER: 25.70 m



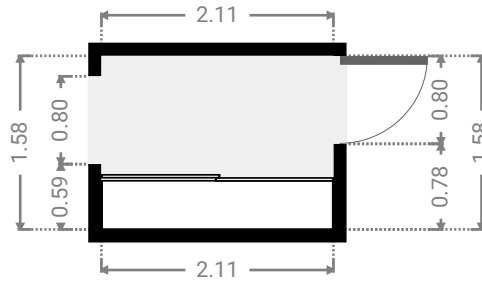
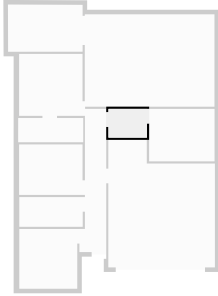
▼ **Hall**
Ground Floor

WIDTH: 1.47 m • LENGTH: 7.86 m
AREA: 9.58 m² • PERIMETER: 18.66 m



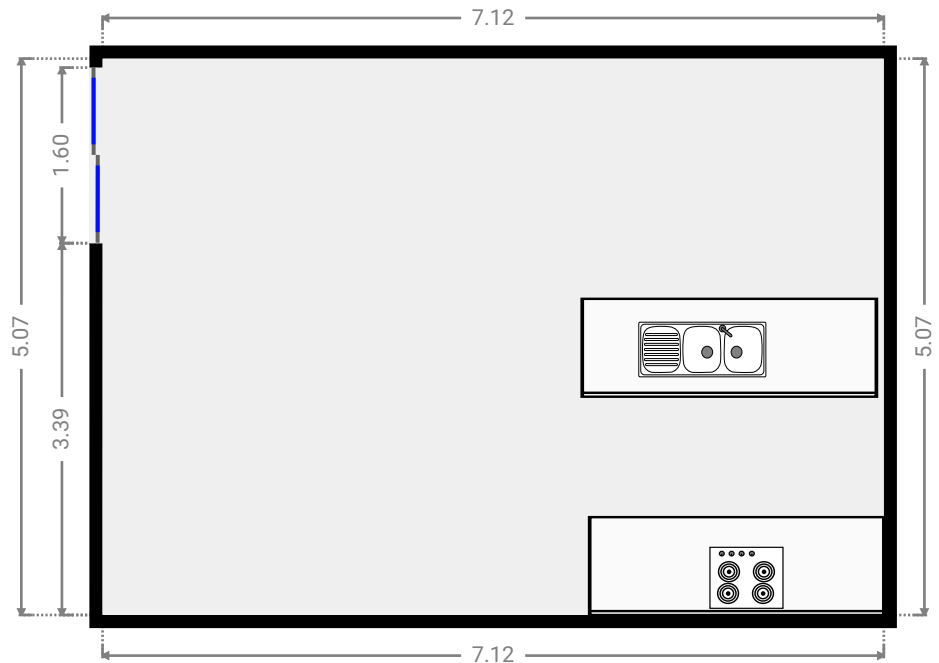
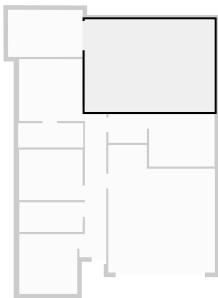
▼ **Hall**
Ground Floor

WIDTH: 2.11 m • LENGTH: 1.58 m
AREA: 3.34 m² • PERIMETER: 7.39 m



▼ **Kitchen**
Ground Floor

WIDTH: 7.12 m • LENGTH: 5.07 m
AREA: 36.10 m² • PERIMETER: 24.38 m



▼ Other
Ground Floor

WIDTH: 4.10 m • LENGTH: 2.59 m
AREA: 10.57 m² • PERIMETER: 13.35 m

