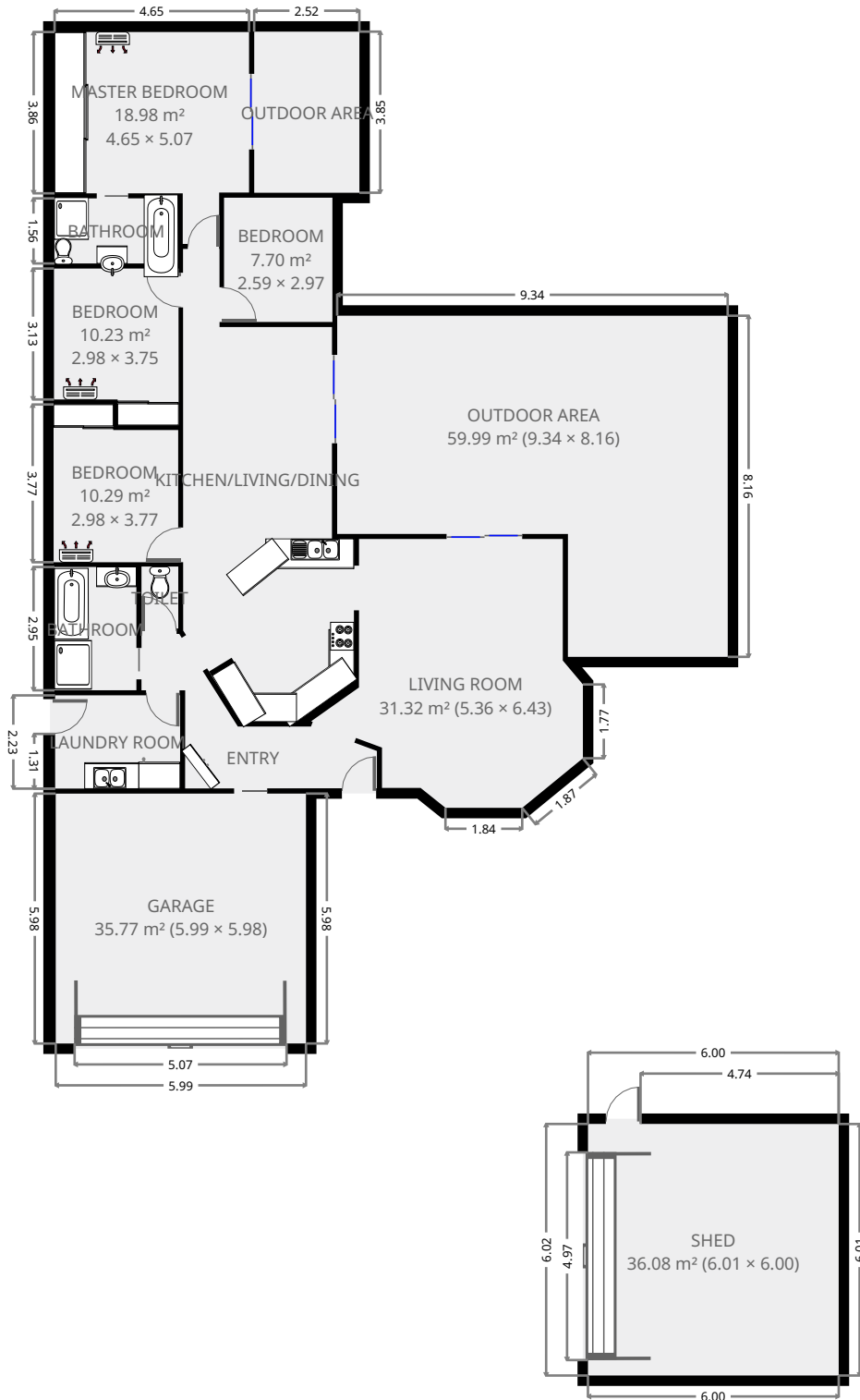


5 Menkin Place

Ground Floor



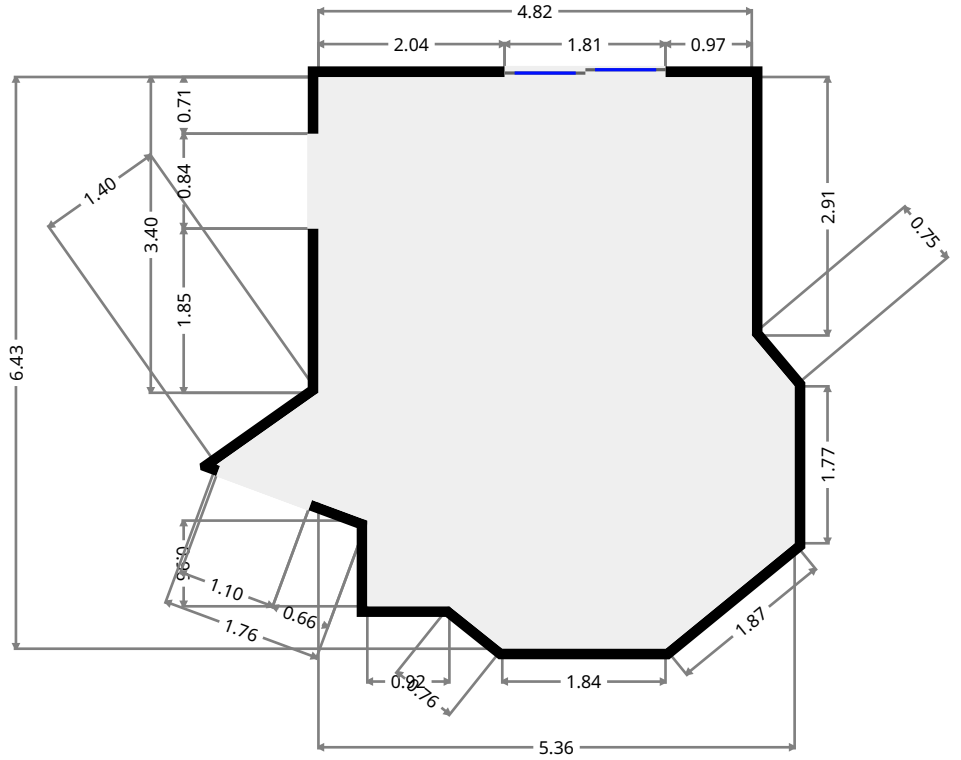
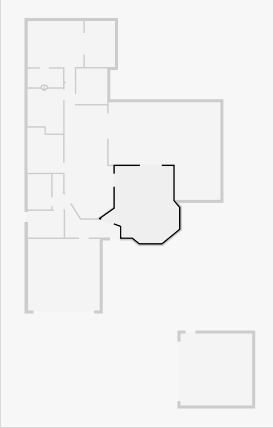
THIS FLOORPLAN IS PROVIDED WITHOUT WARRANTY OF ANY KIND. SENSOPIA DISCLAIMS ANY WARRANTY INCLUDING, WITHOUT LIMITATION, SATISFACTORY QUALITY OR ACCURACY OF DIMENSIONS.



5 Menkin Place

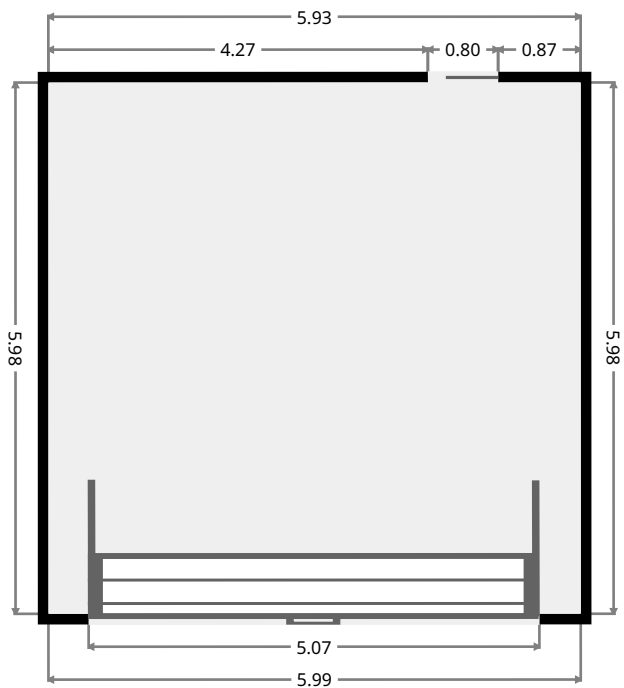
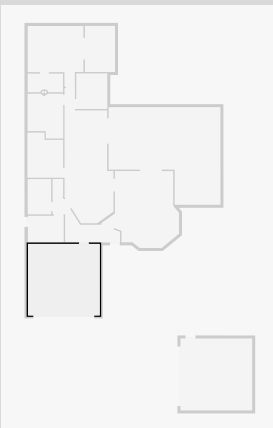
Living Room

Width: 5.36 m
 Length: 6.43 m
 Area: 31.32 m²
 Perimeter: 23.42 m



Garage

Width: 5.98 m
 Length: 5.99 m
 Area: 35.77 m²
 Perimeter: 23.92 m



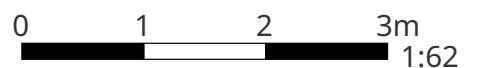
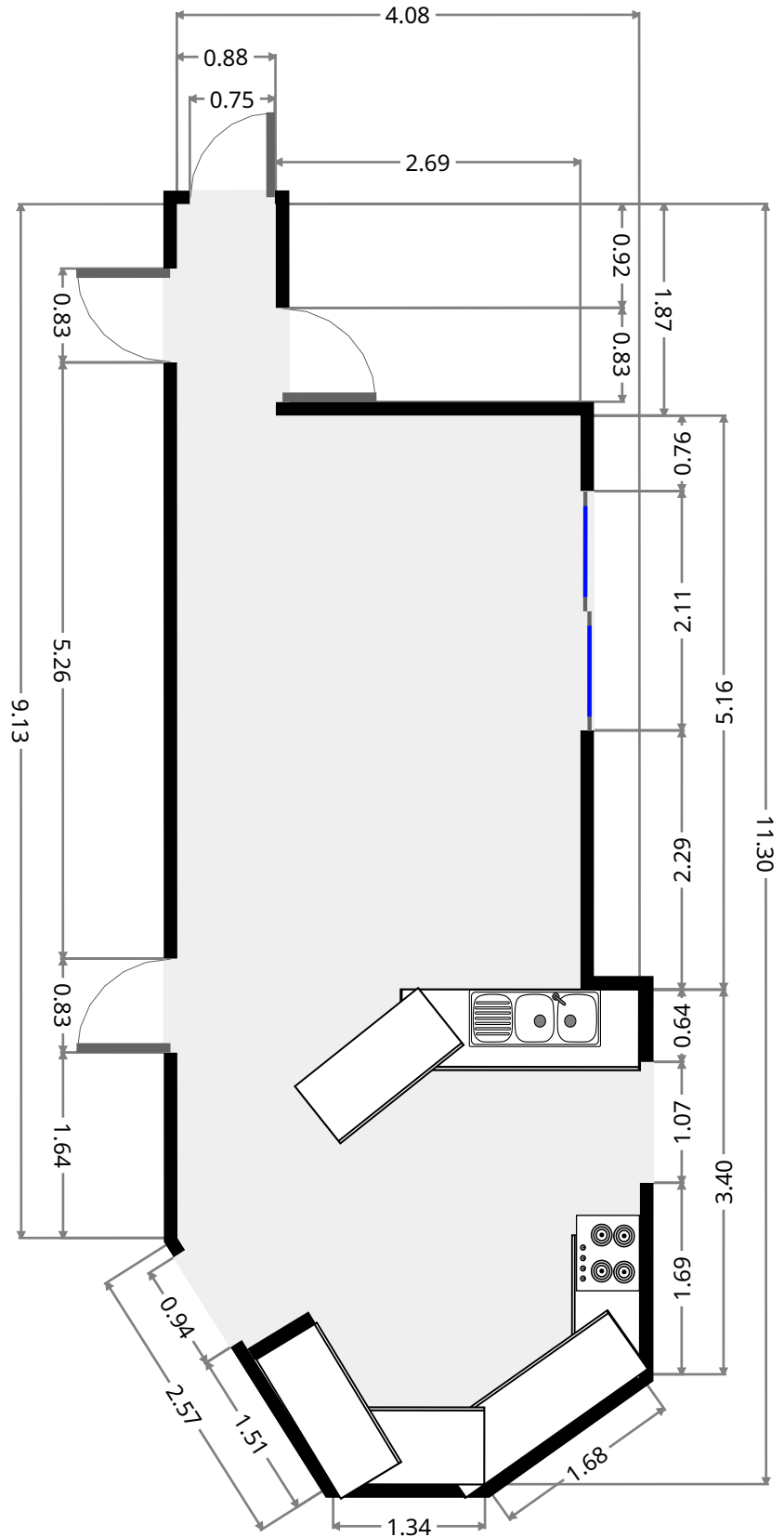
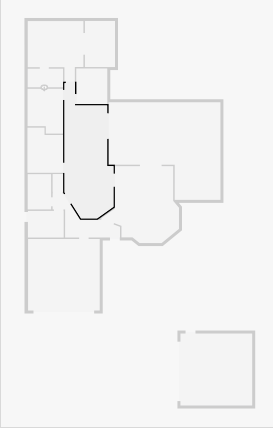
THIS FLOORPLAN IS PROVIDED WITHOUT WARRANTY OF ANY KIND. SENSOPIA DISCLAIMS ANY WARRANTY INCLUDING, WITHOUT LIMITATION, SATISFACTORY QUALITY OR ACCURACY OF DIMENSIONS.



5 Menkin Place

Kitchen/Living/Dining

Width: 4.08 m
 Length: 11.30 m
 Area: 35.35 m²
 Perimeter: 29.14 m

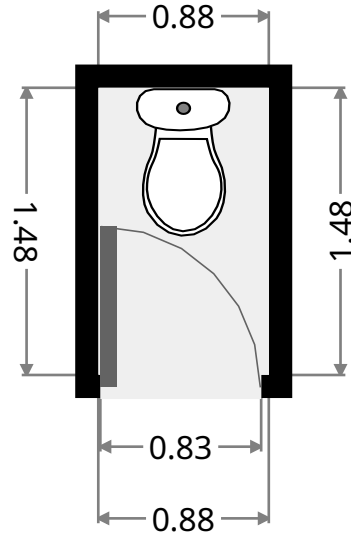
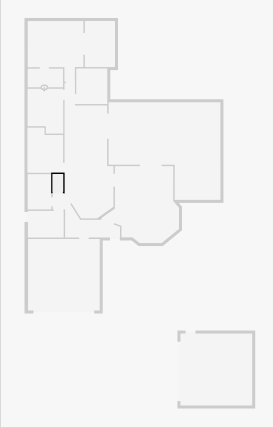


THIS FLOORPLAN IS PROVIDED WITHOUT WARRANTY OF ANY KIND. SENSOPIA DISCLAIMS ANY WARRANTY INCLUDING, WITHOUT LIMITATION, SATISFACTORY QUALITY OR ACCURACY OF DIMENSIONS.

5 Menkin Place

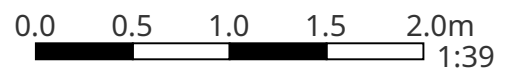
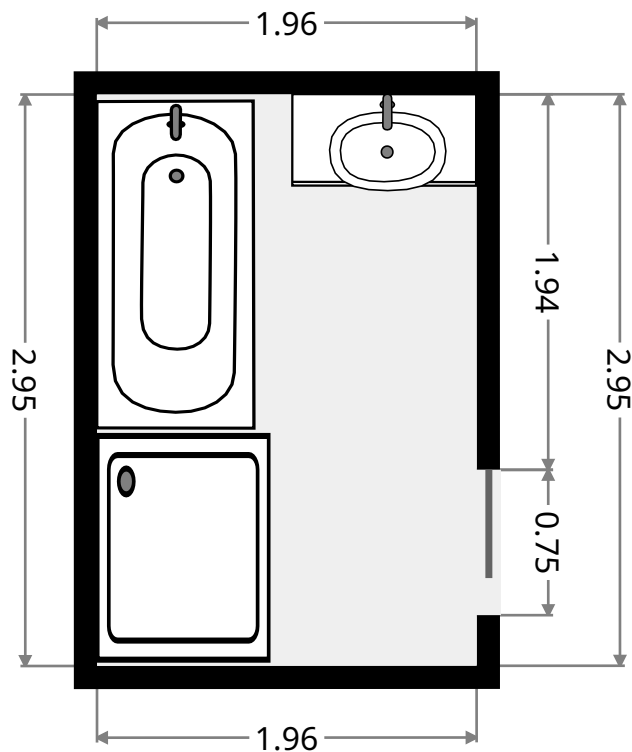
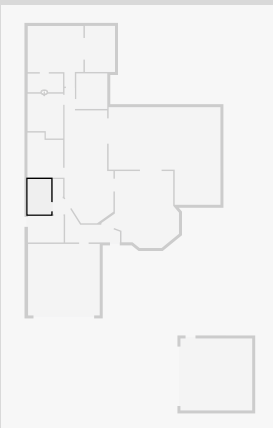
Toilet

Width: 0.88 m
Length: 1.48 m
Area: 1.30 m²
Perimeter: 4.72 m



Bathroom

Width: 1.96 m
Length: 2.95 m
Area: 5.78 m²
Perimeter: 9.82 m

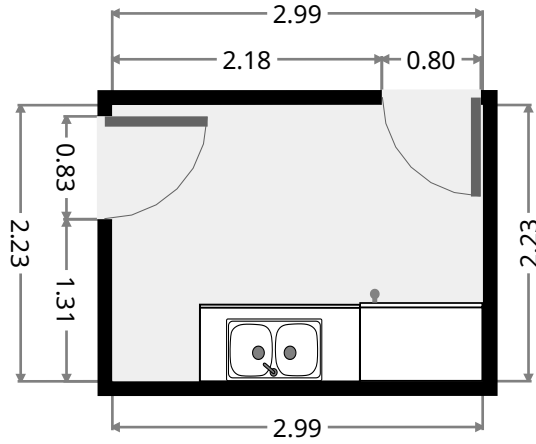
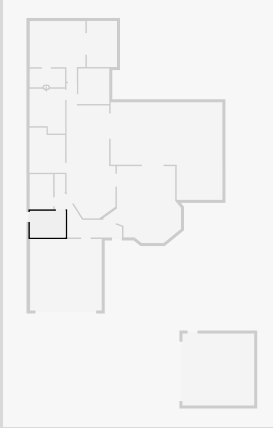


THIS FLOORPLAN IS PROVIDED WITHOUT WARRANTY OF ANY KIND. SENSOPIA DISCLAIMS ANY WARRANTY INCLUDING, WITHOUT LIMITATION, SATISFACTORY QUALITY OR ACCURACY OF DIMENSIONS.

5 Menkin Place

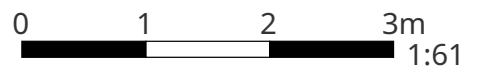
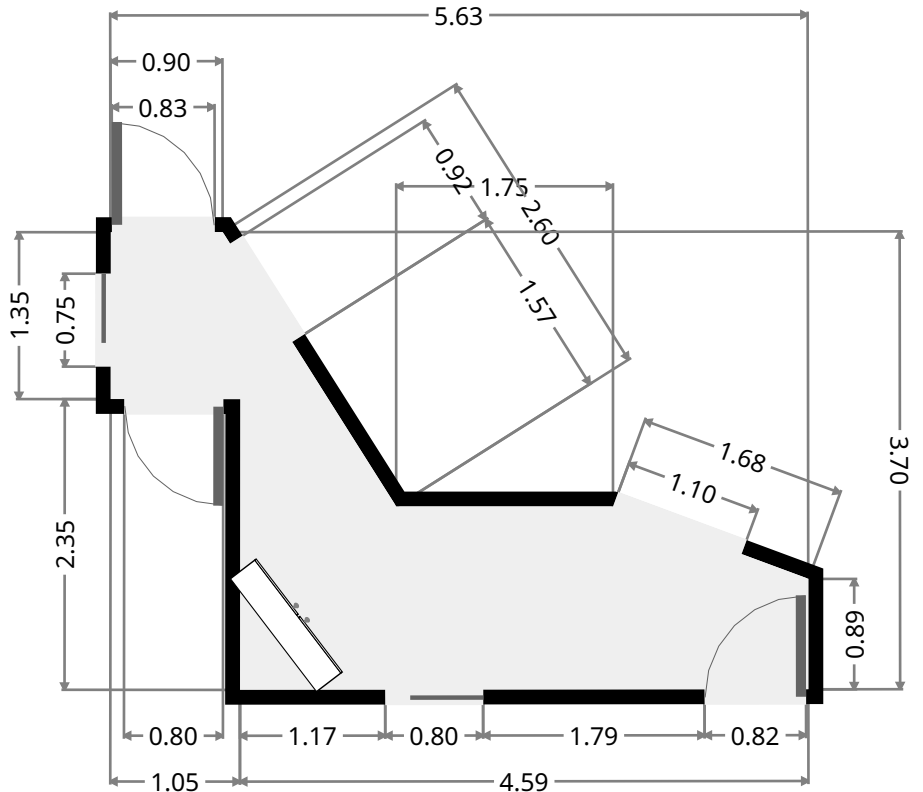
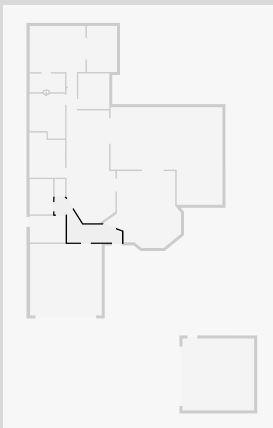
Laundry Room

Width: 2.23 m
 Length: 2.99 m
 Area: 6.66 m²
 Perimeter: 10.44 m



Entry

Width: 3.70 m
 Length: 5.63 m
 Area: 8.96 m²
 Perimeter: 17.17 m

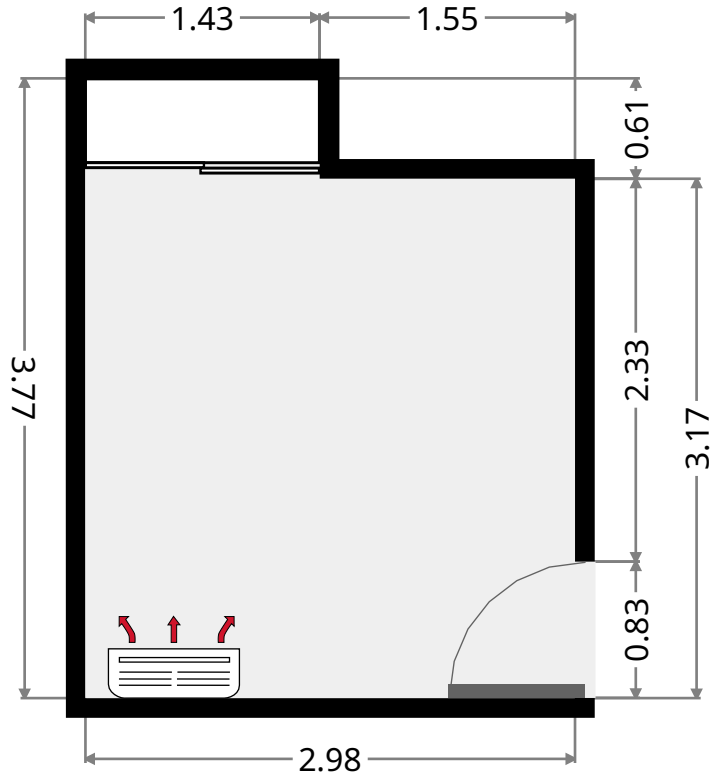
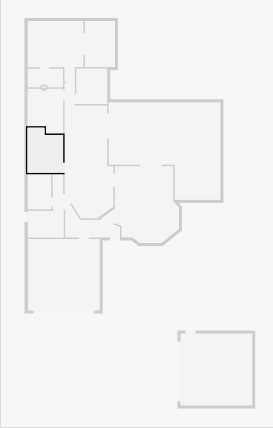


THIS FLOORPLAN IS PROVIDED WITHOUT WARRANTY OF ANY KIND. SENSOPIA DISCLAIMS ANY WARRANTY INCLUDING, WITHOUT LIMITATION, SATISFACTORY QUALITY OR ACCURACY OF DIMENSIONS.

5 Menkin Place

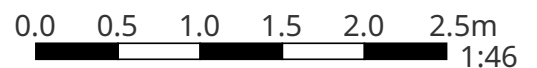
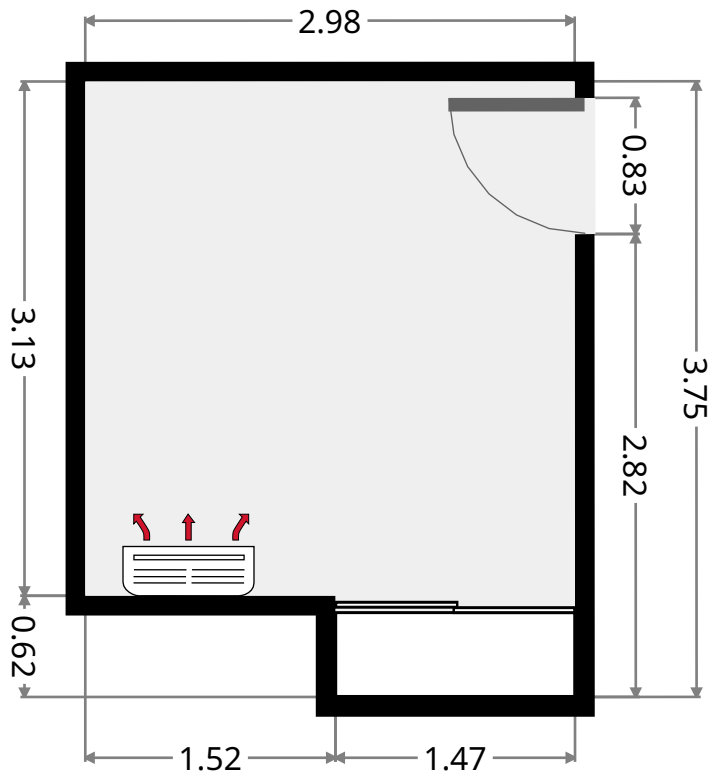
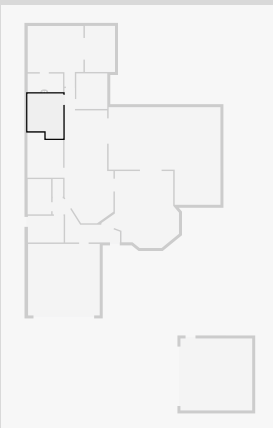
Bedroom

Width: 2.98 m
 Length: 3.77 m
 Area: 10.29 m²
 Perimeter: 13.51 m



Bedroom

Width: 2.98 m
 Length: 3.75 m
 Area: 10.23 m²
 Perimeter: 13.45 m

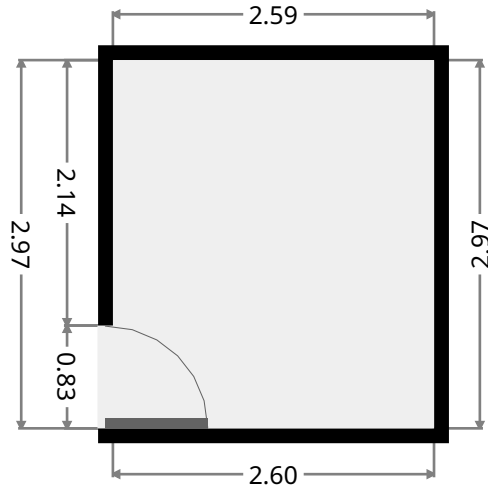
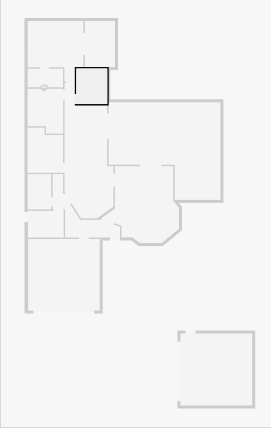


THIS FLOORPLAN IS PROVIDED WITHOUT WARRANTY OF ANY KIND. SENSOPIA DISCLAIMS ANY WARRANTY INCLUDING, WITHOUT LIMITATION, SATISFACTORY QUALITY OR ACCURACY OF DIMENSIONS.

5 Menkin Place

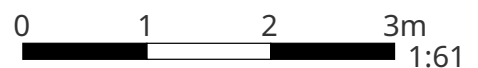
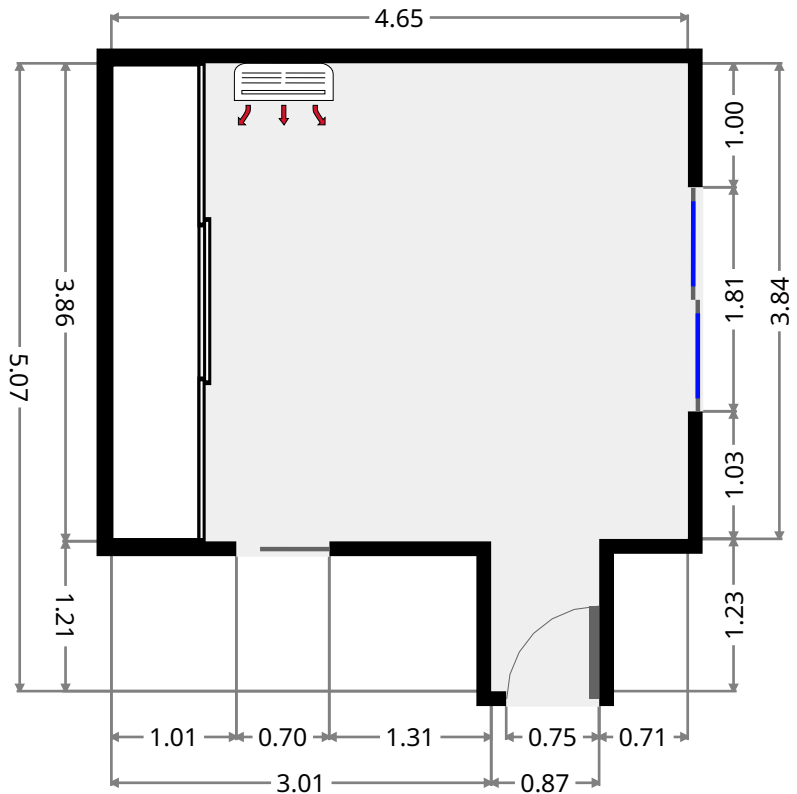
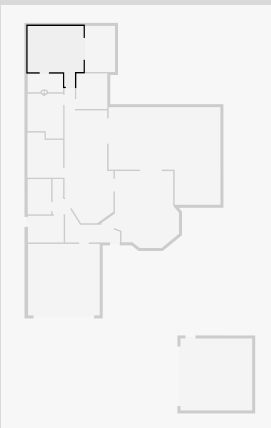
Bedroom

Width: 2.59 m
 Length: 2.97 m
 Area: 7.70 m²
 Perimeter: 11.13 m



Master Bedroom

Width: 4.65 m
 Length: 5.07 m
 Area: 18.98 m²
 Perimeter: 19.44 m

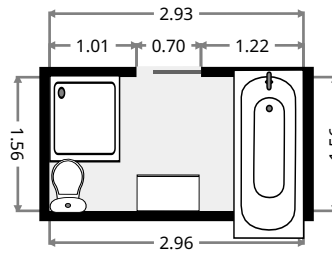
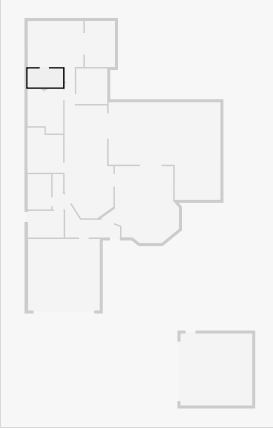


THIS FLOORPLAN IS PROVIDED WITHOUT WARRANTY OF ANY KIND. SENSOPIA DISCLAIMS ANY WARRANTY INCLUDING, WITHOUT LIMITATION, SATISFACTORY QUALITY OR ACCURACY OF DIMENSIONS.

5 Menkin Place

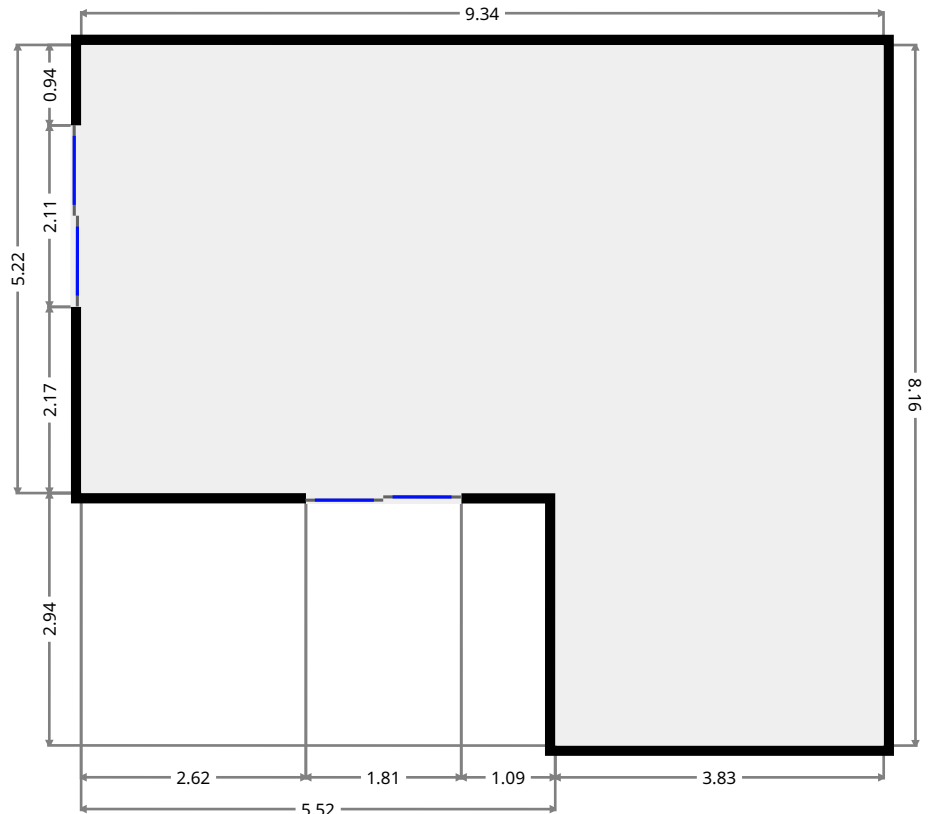
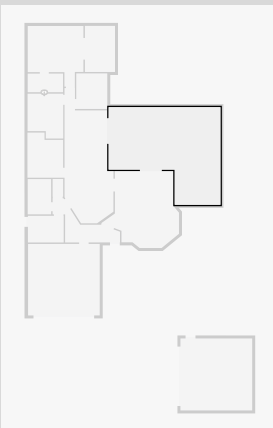
Bathroom

Width: 1.56 m
 Length: 2.96 m
 Area: 4.60 m²
 Perimeter: 9.03 m



Outdoor Area

Width: 8.16 m
 Length: 9.34 m
 Area: 59.99 m²
 Perimeter: 35.00 m

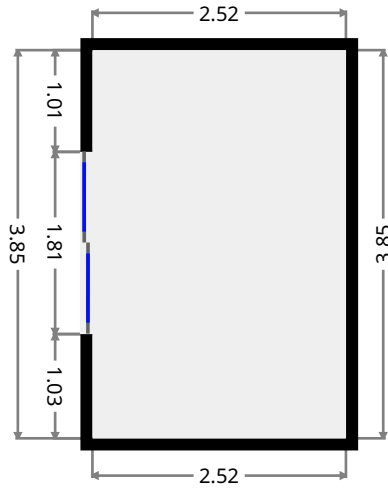
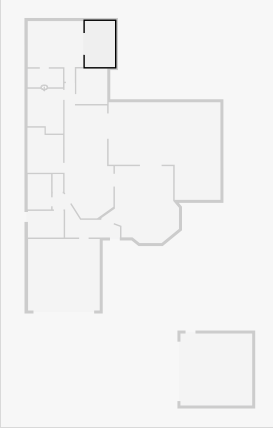


THIS FLOORPLAN IS PROVIDED WITHOUT WARRANTY OF ANY KIND. SENSOPIA DISCLAIMS ANY WARRANTY INCLUDING, WITHOUT LIMITATION, SATISFACTORY QUALITY OR ACCURACY OF DIMENSIONS.

5 Menkin Place

Outdoor Area

Width: 2.52 m
Length: 3.85 m
Area: 9.69 m²
Perimeter: 12.74 m



Shed

Width: 6.00 m
Length: 6.01 m
Area: 36.08 m²
Perimeter: 24.03 m

