

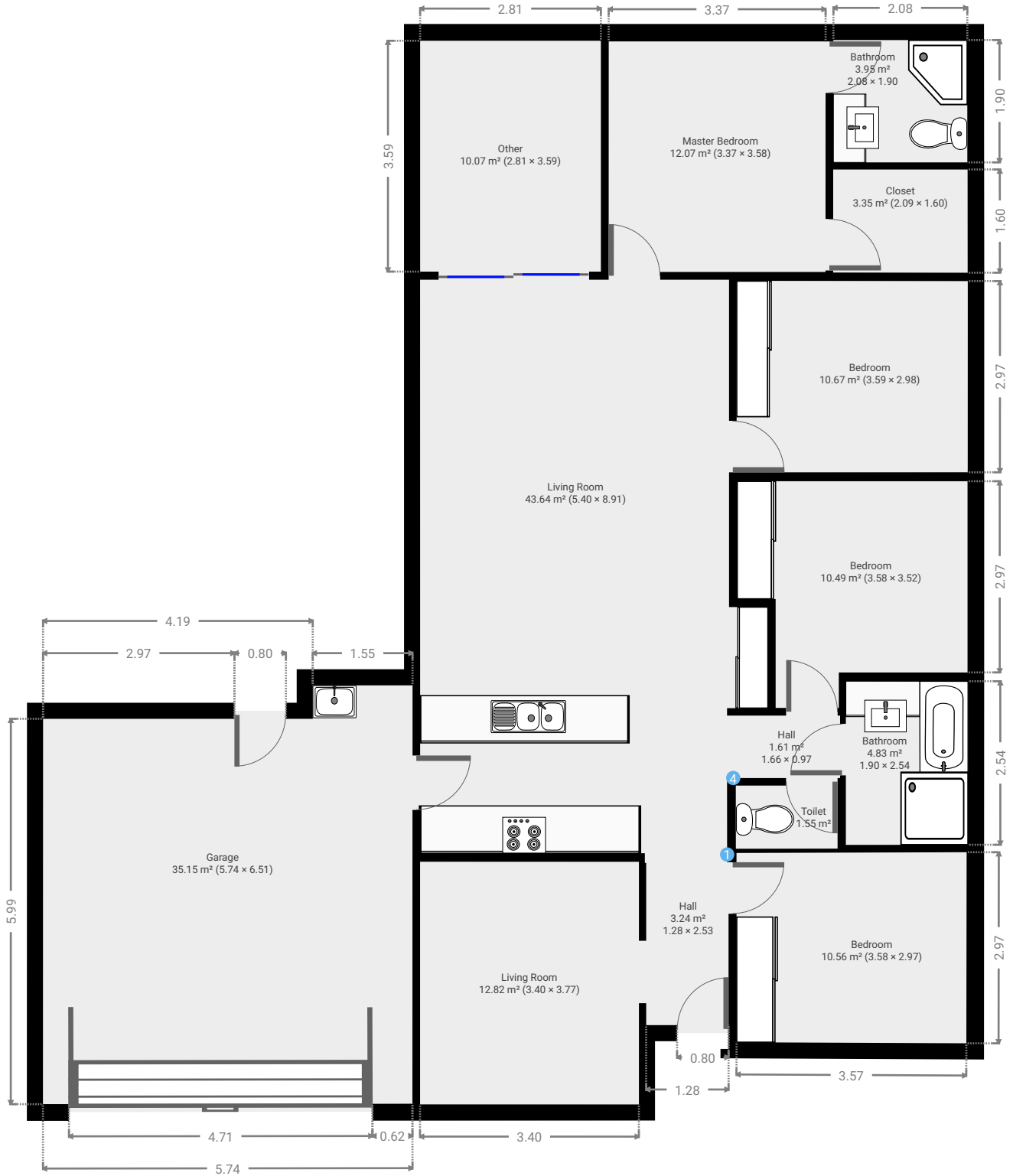
5 London Court

SUBMITTED BY
Janelle Casey
stockers@cqoz.com

CREATED ON
2021-10-28

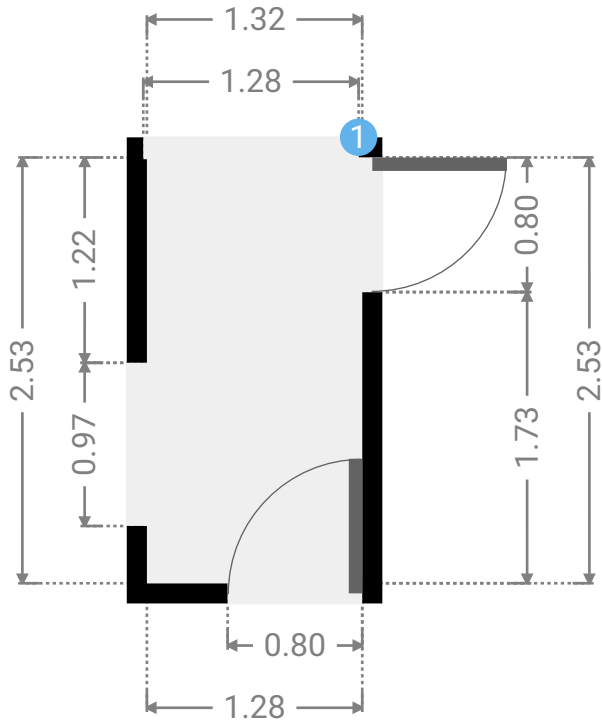
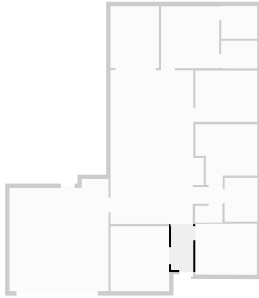
Floors 1

▼ Ground Floor



▼ Hall Ground Floor

WIDTH: 1.28 m • LENGTH: 2.53 m
AREA: 3.24 m² • PERIMETER: 7.62 m



▼ Hall/Ground Floor

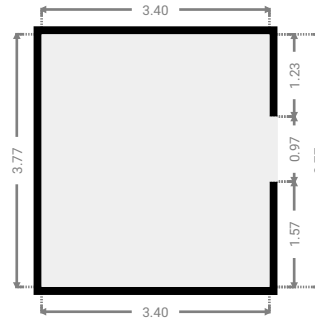
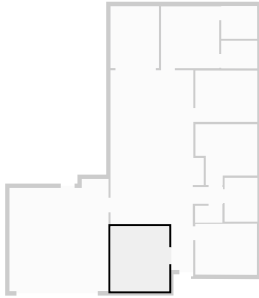
1 OPENING

Height
0.00 m



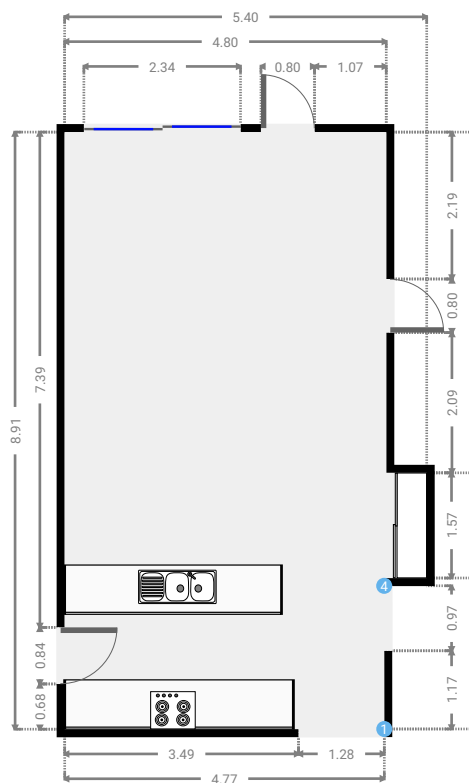
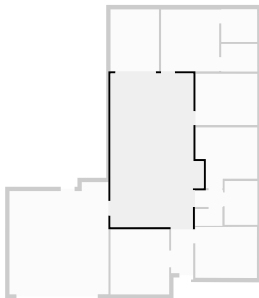
▼ Living Room Ground Floor

WIDTH: 3.40 m • LENGTH: 3.77 m
AREA: 12.82 m² • PERIMETER: 14.34 m



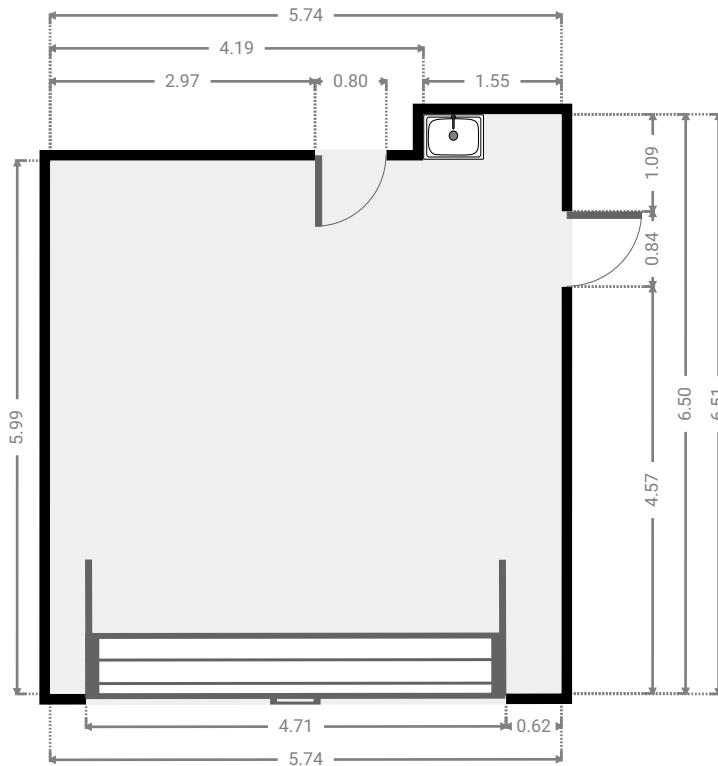
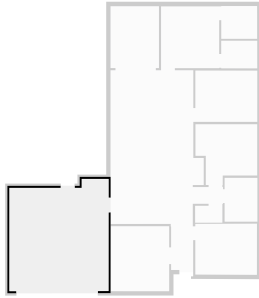
▼ Living Room Ground Floor

WIDTH: 5.40 m • LENGTH: 8.91 m
AREA: 43.64 m² • PERIMETER: 28.63 m



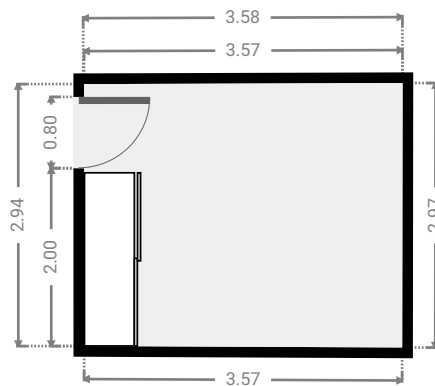
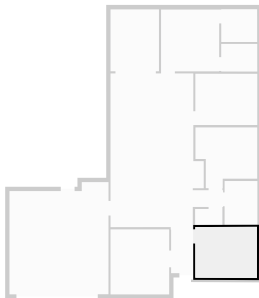
▼ **Garage**
Ground Floor

WIDTH: 5.74 m • LENGTH: 6.51 m
AREA: 35.15 m² • PERIMETER: 24.49 m



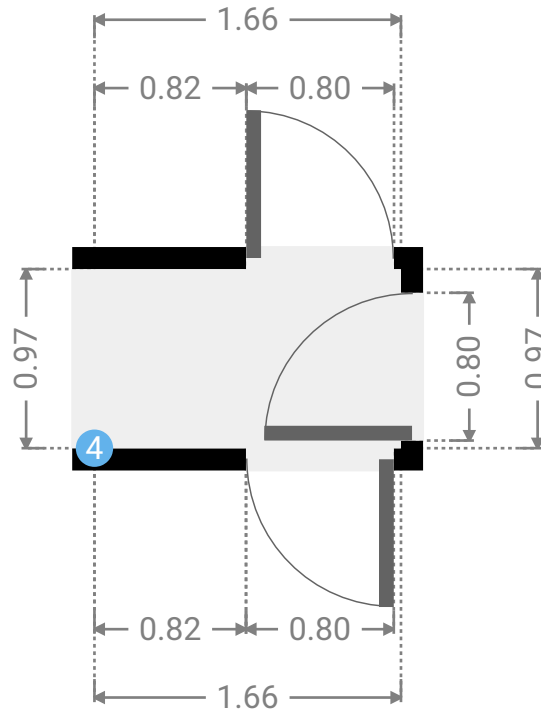
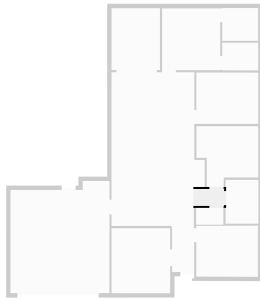
▼ **Bedroom**
Ground Floor

WIDTH: 3.58 m • LENGTH: 2.97 m
AREA: 10.56 m² • PERIMETER: 13.05 m



▼ Hall Ground Floor

WIDTH: 1.66 m • LENGTH: 0.97 m
AREA: 1.61 m² • PERIMETER: 5.26 m



▼ Hall/Ground Floor

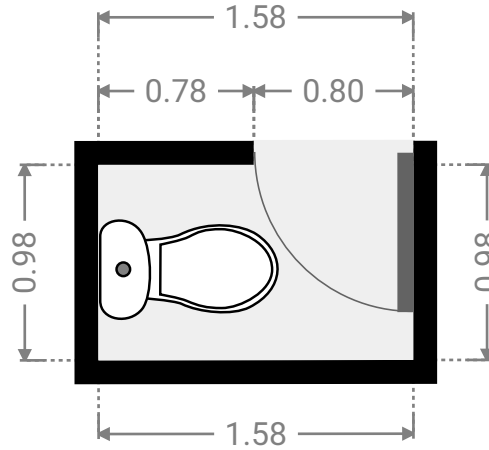
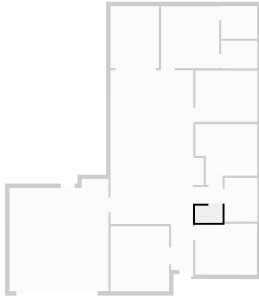
4 OPENING

Height
0.00 m



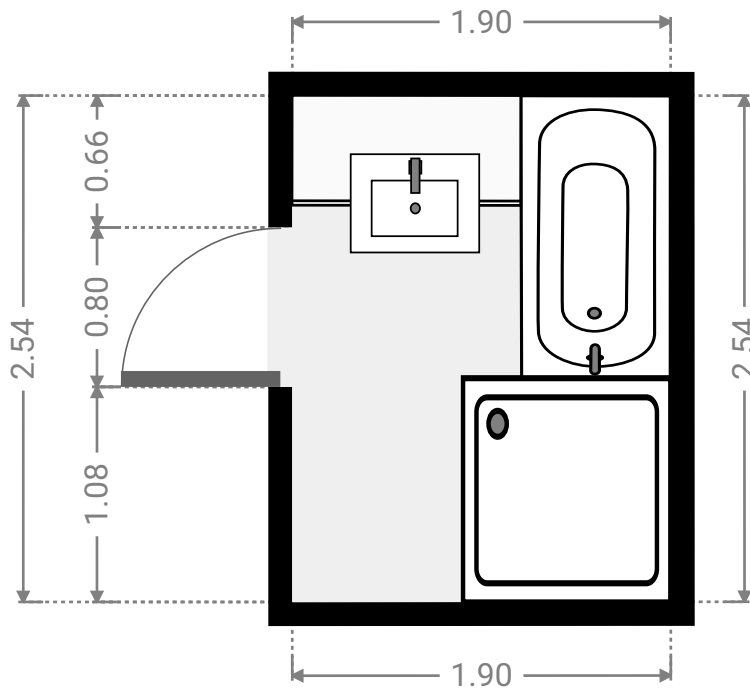
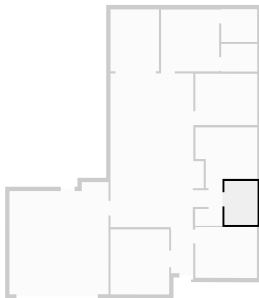
▼ **Toilet**
Ground Floor

WIDTH: 1.58 m • LENGTH: 0.98 m
AREA: 1.55 m² • PERIMETER: 5.12 m



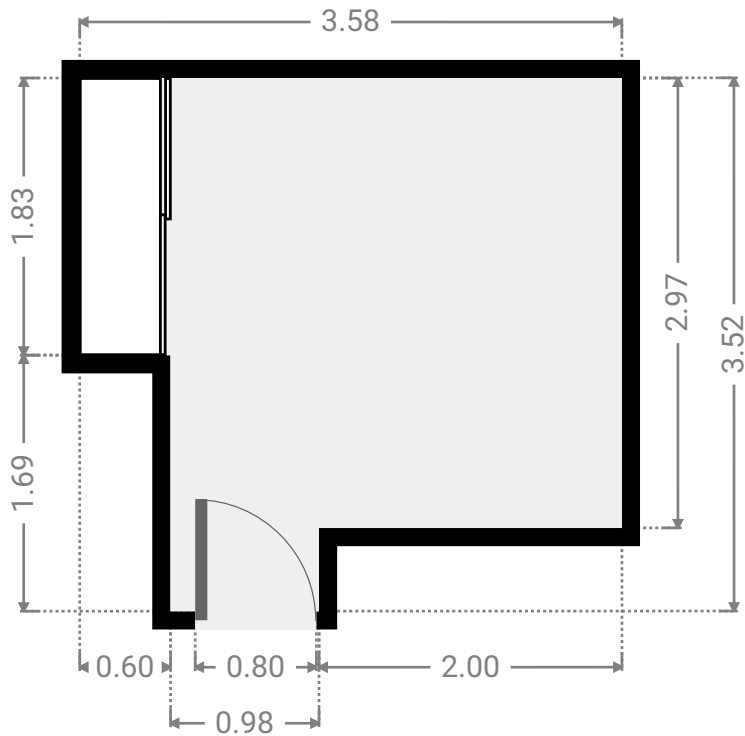
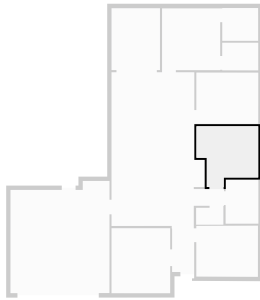
▼ **Bathroom**
Ground Floor

WIDTH: 1.90 m • LENGTH: 2.54 m
AREA: 4.83 m² • PERIMETER: 8.88 m



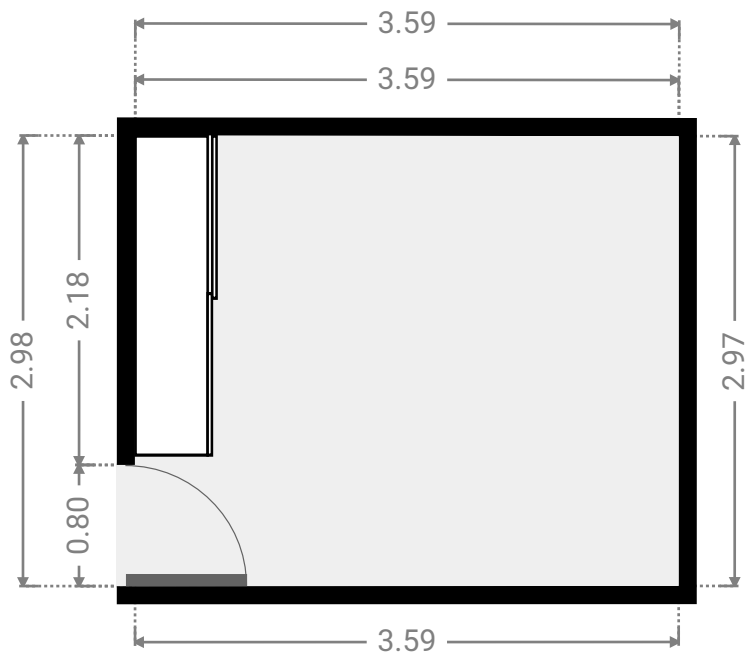
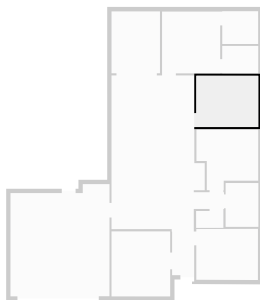
▼ **Bedroom**
Ground Floor

WIDTH: 3.58 m • LENGTH: 3.52 m
AREA: 10.49 m² • PERIMETER: 14.20 m



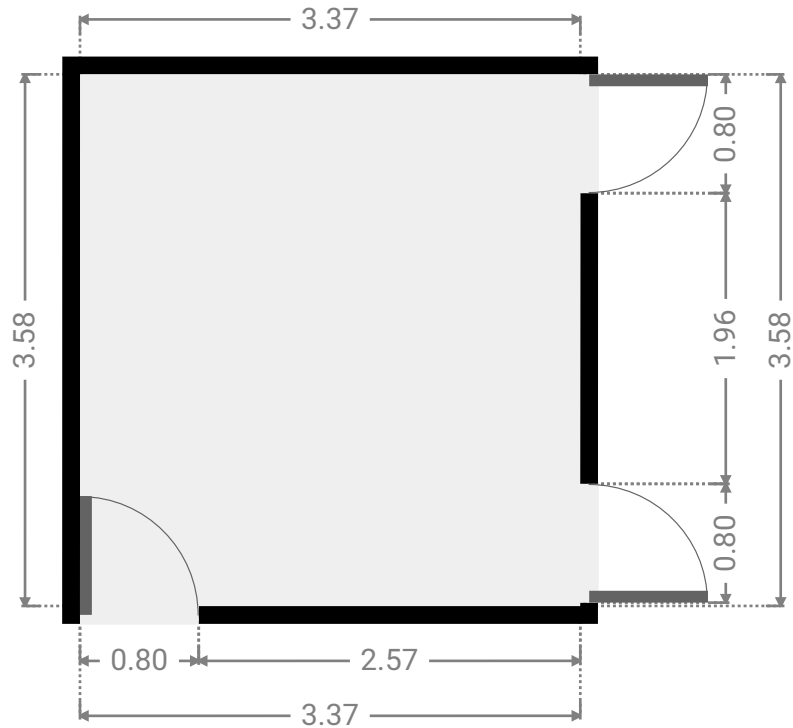
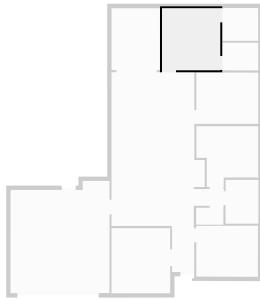
▼ **Bedroom**
Ground Floor

WIDTH: 3.59 m • LENGTH: 2.98 m
AREA: 10.67 m² • PERIMETER: 13.12 m



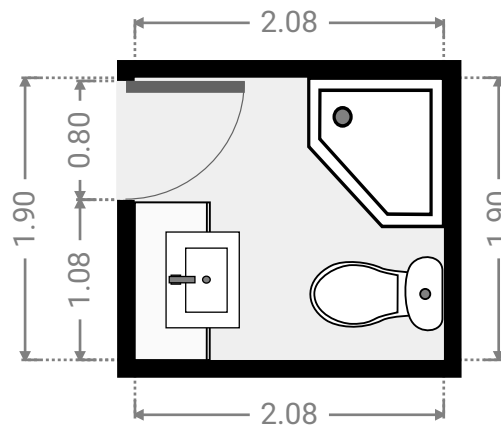
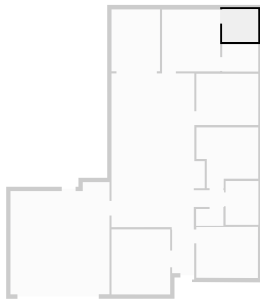
▼ Master Bedroom Ground Floor

WIDTH: 3.37 m • LENGTH: 3.58 m
AREA: 12.07 m² • PERIMETER: 13.90 m



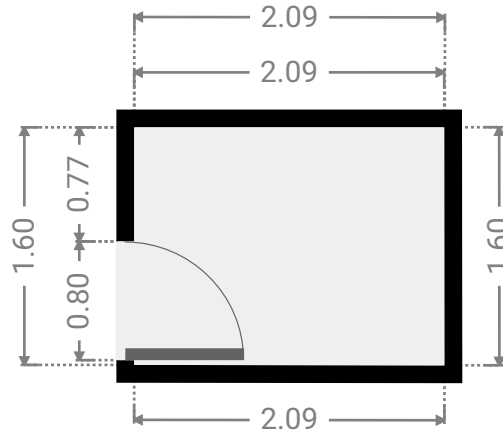
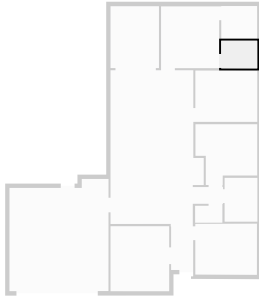
▼ Bathroom Ground Floor

WIDTH: 2.08 m • LENGTH: 1.90 m
AREA: 3.95 m² • PERIMETER: 7.96 m



▼ Closet Ground Floor

WIDTH: 2.09 m • LENGTH: 1.60 m
AREA: 3.35 m² • PERIMETER: 7.38 m



▼ Other Ground Floor

WIDTH: 2.81 m • LENGTH: 3.59 m
AREA: 10.07 m² • PERIMETER: 12.79 m

