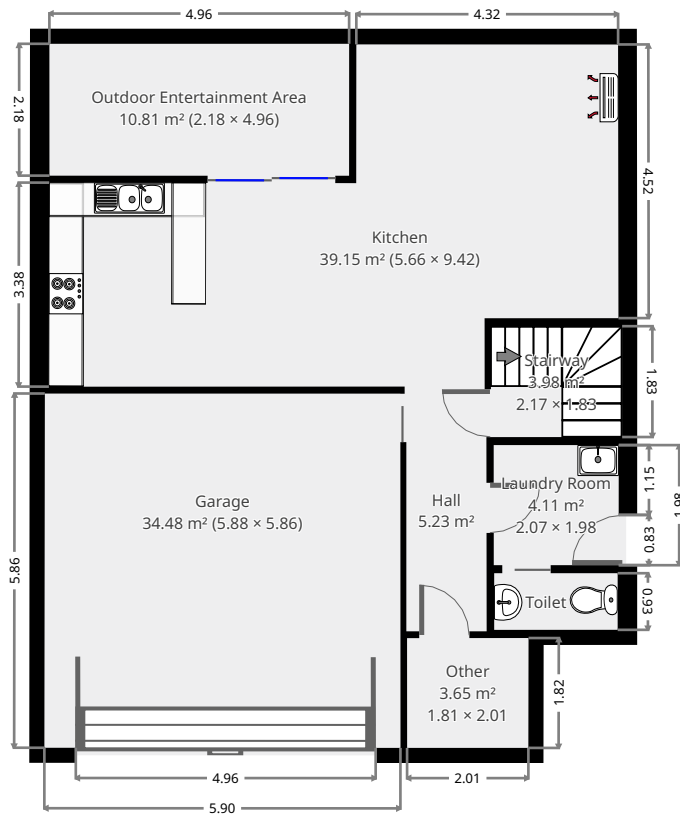
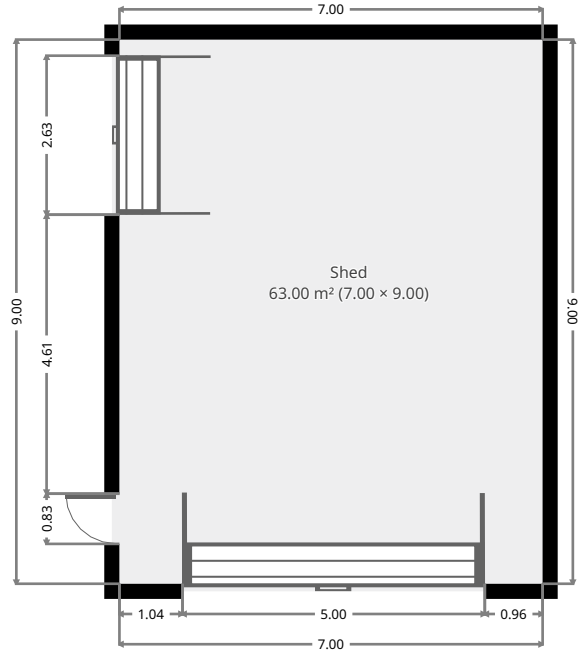


5 Doongarra Crescent

Ground Floor



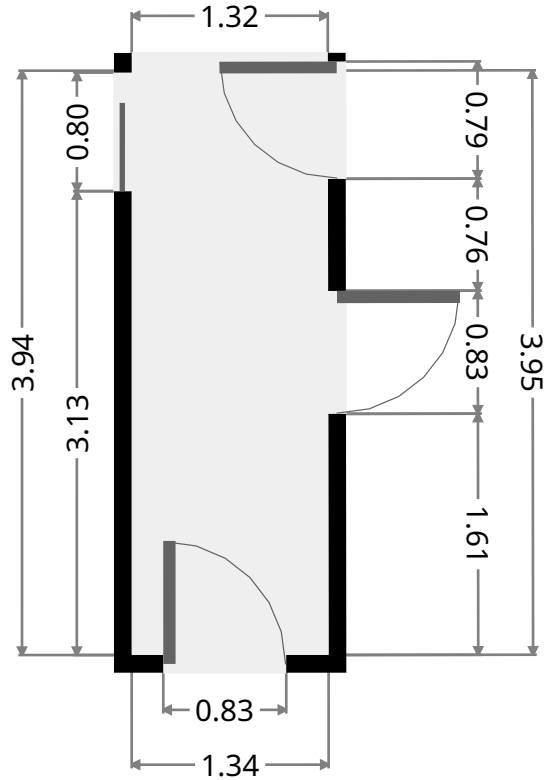
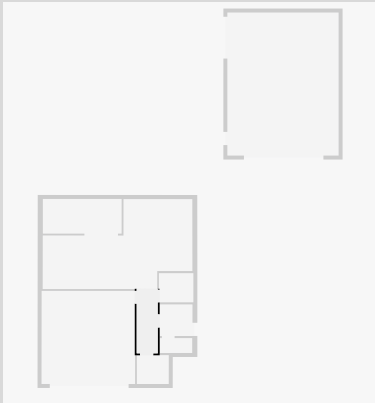
THIS FLOORPLAN IS PROVIDED WITHOUT WARRANTY OF ANY KIND. SENSOPIA DISCLAIMS ANY WARRANTY INCLUDING, WITHOUT LIMITATION, SATISFACTORY QUALITY OR ACCURACY OF DIMENSIONS.



5 Doongarra Crescent

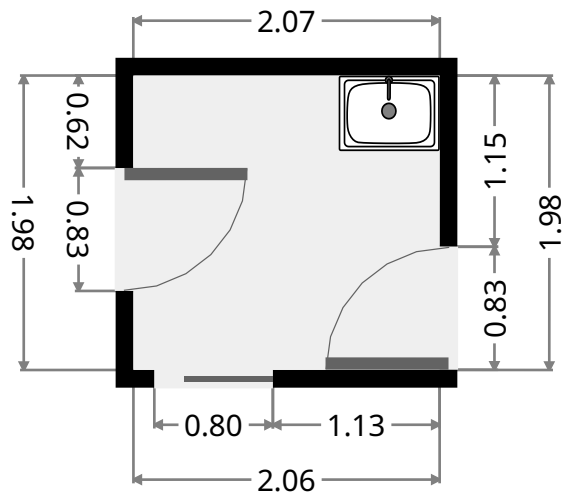
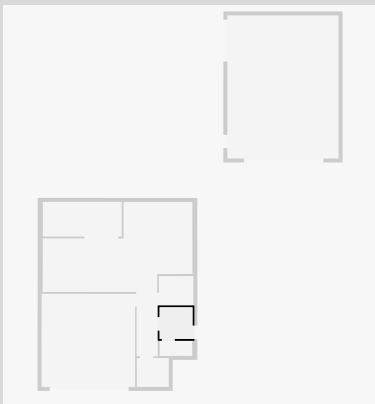
Hall

Width: 1.32 m
 Length: 3.95 m
 Area: 5.23 m²
 Perimeter: 10.54 m



Laundry Room

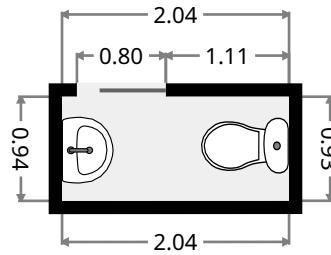
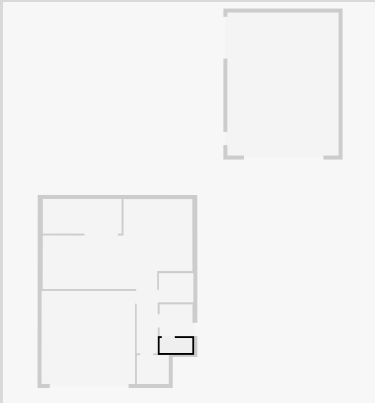
Width: 1.98 m
 Length: 2.07 m
 Area: 4.11 m²
 Perimeter: 8.11 m



5 Doongarra Crescent

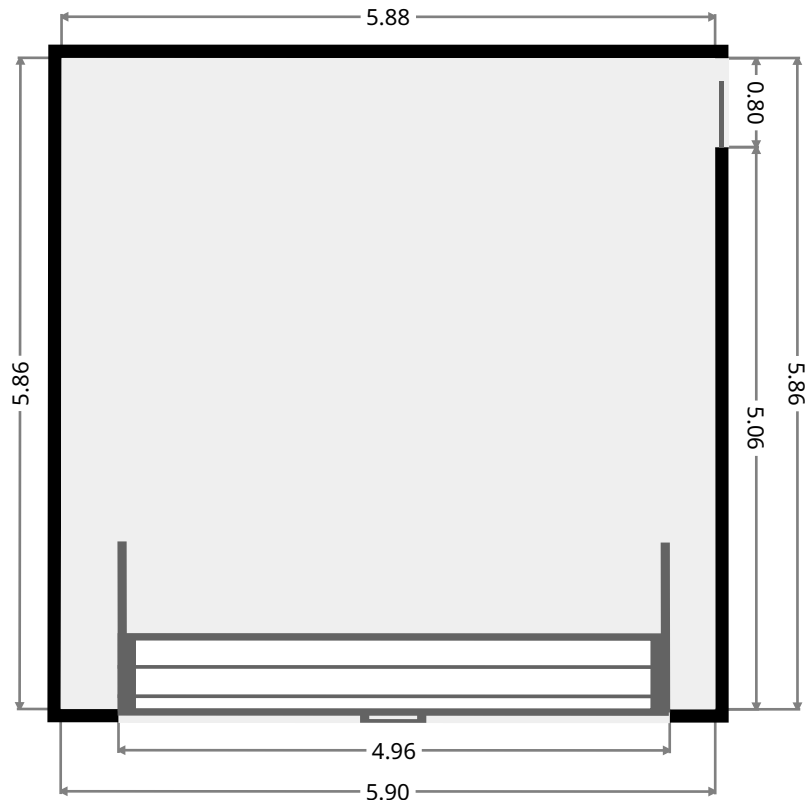
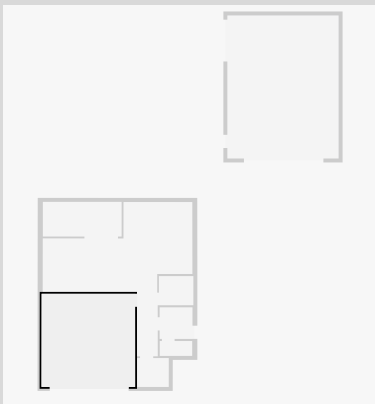
Toilet

Width: 0.93 m
Length: 2.04 m
Area: 1.91 m²
Perimeter: 5.96 m



Garage

Width: 5.86 m
Length: 5.88 m
Area: 34.48 m²
Perimeter: 23.49 m

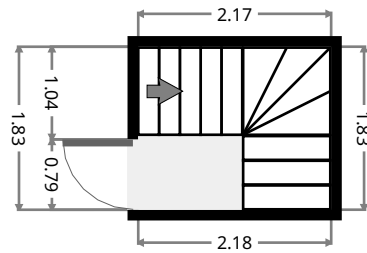
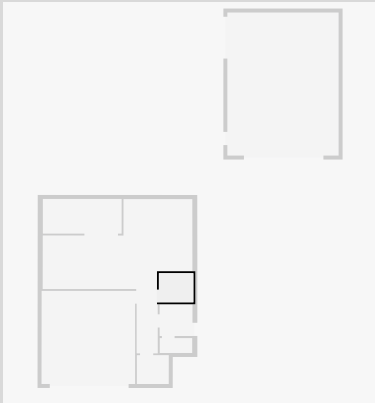


THIS FLOORPLAN IS PROVIDED WITHOUT WARRANTY OF ANY KIND. SENSOPIA DISCLAIMS ANY WARRANTY INCLUDING, WITHOUT LIMITATION, SATISFACTORY QUALITY OR ACCURACY OF DIMENSIONS.

5 Doongarra Crescent

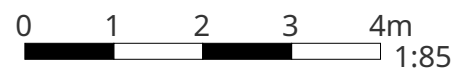
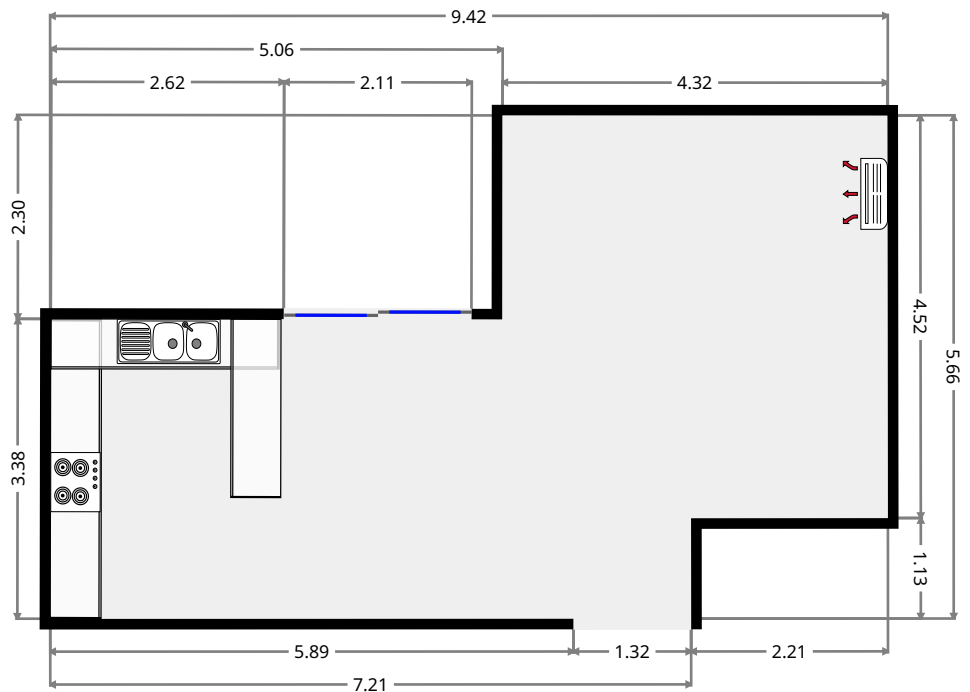
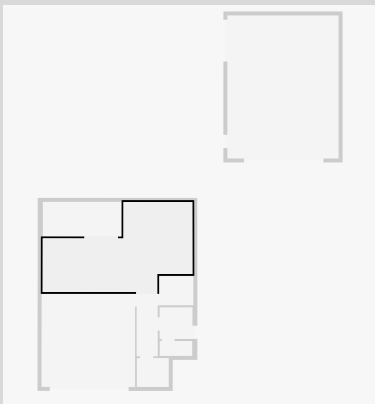
Stairway

Width: 1.83 m
 Length: 2.17 m
 Area: 3.98 m²
 Perimeter: 8.01 m



Kitchen

Width: 5.66 m
 Length: 9.42 m
 Area: 39.15 m²
 Perimeter: 30.15 m

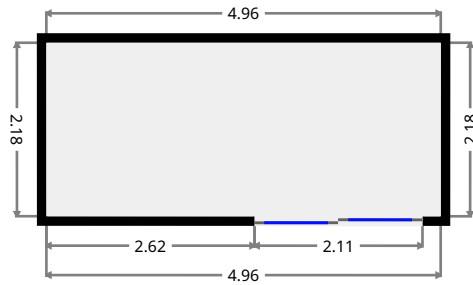
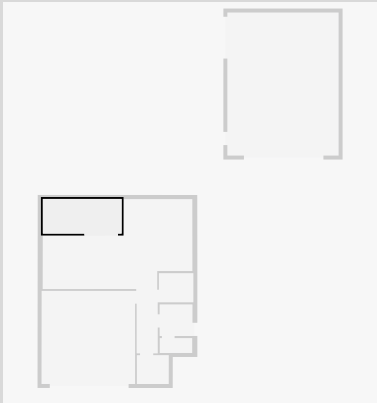


THIS FLOORPLAN IS PROVIDED WITHOUT WARRANTY OF ANY KIND. SENSOPIA DISCLAIMS ANY WARRANTY INCLUDING, WITHOUT LIMITATION, SATISFACTORY QUALITY OR ACCURACY OF DIMENSIONS.

5 Doongarra Crescent

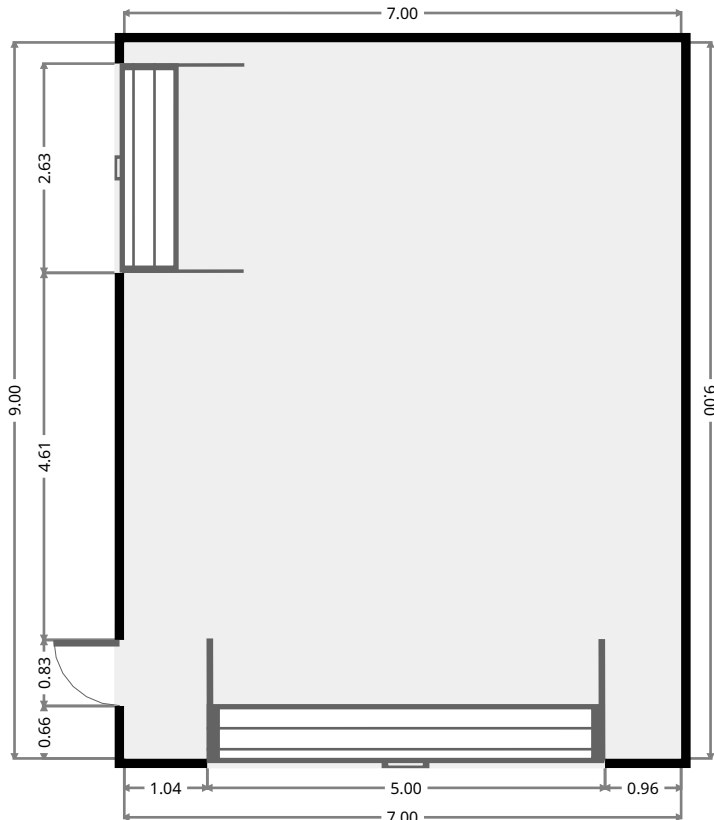
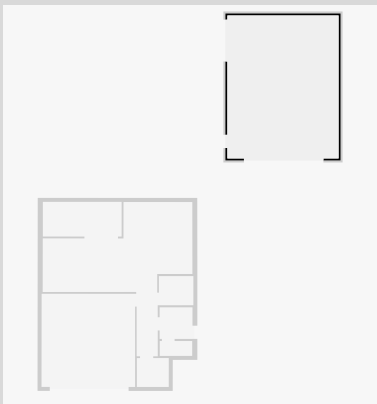
Outdoor Entertainment Area

Width: 2.18 m
 Length: 4.96 m
 Area: 10.81 m²
 Perimeter: 14.28 m



Shed

Width: 7.00 m
 Length: 9.00 m
 Area: 63.00 m²
 Perimeter: 32.00 m

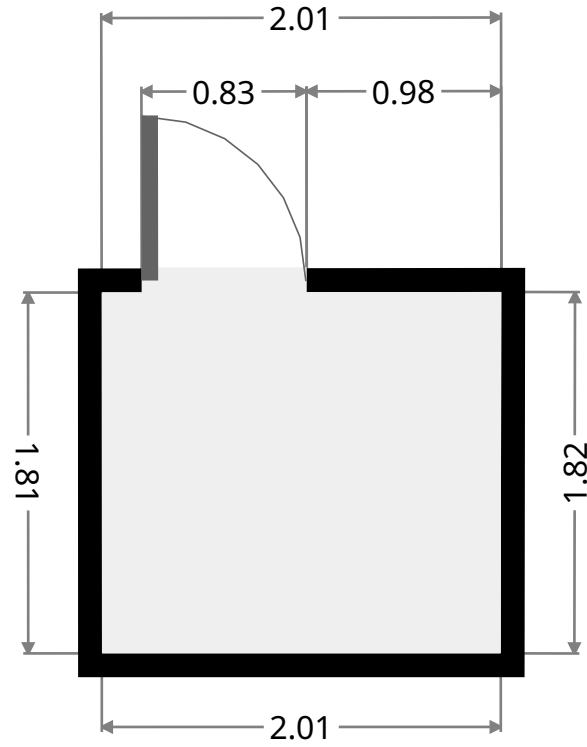
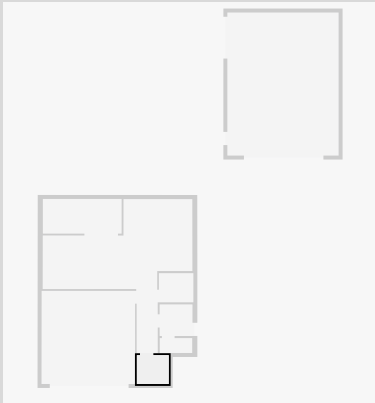


THIS FLOORPLAN IS PROVIDED WITHOUT WARRANTY OF ANY KIND. SENSOPIA DISCLAIMS ANY WARRANTY INCLUDING, WITHOUT LIMITATION, SATISFACTORY QUALITY OR ACCURACY OF DIMENSIONS.

5 Doongarra Crescent

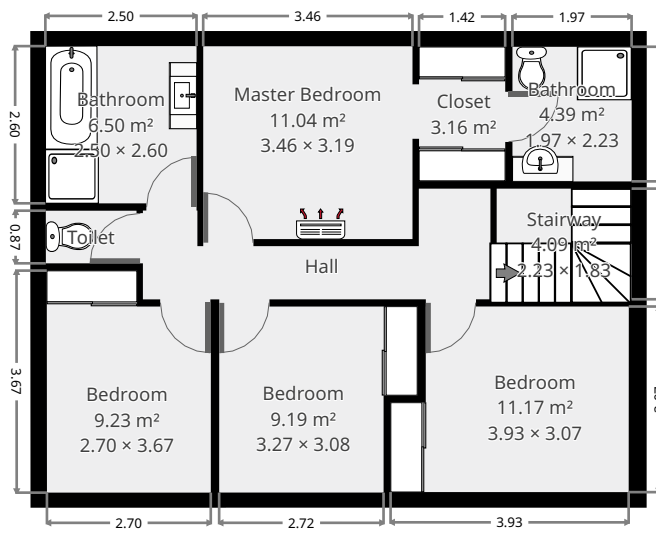
Other

Width: 1.81 m
Length: 2.01 m
Area: 3.65 m²
Perimeter: 7.65 m



5 Doongarra Crescent

1st Floor



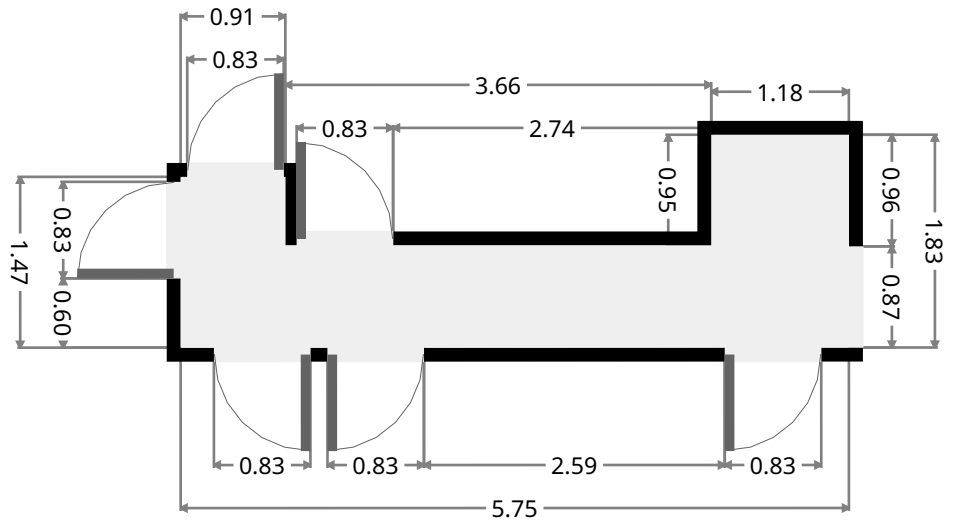
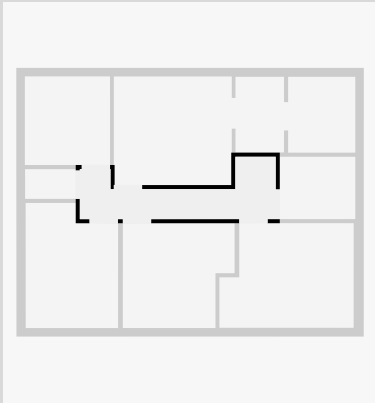
THIS FLOORPLAN IS PROVIDED WITHOUT WARRANTY OF ANY KIND. SENSOPIA DISCLAIMS ANY WARRANTY INCLUDING, WITHOUT LIMITATION, SATISFACTORY QUALITY OR ACCURACY OF DIMENSIONS.



5 Doongarra Crescent

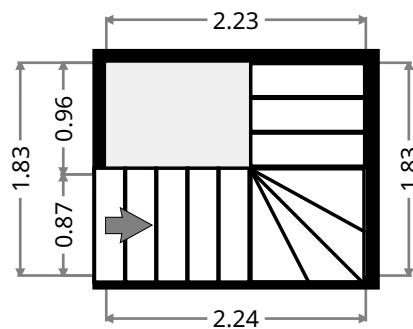
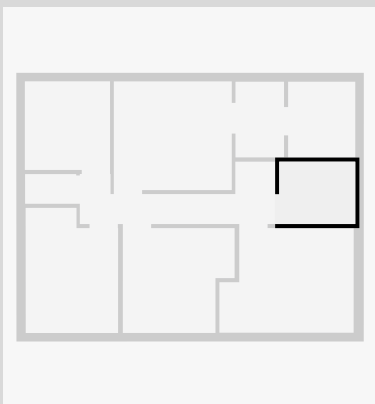
Hall

Width:	1.83 m
Length:	5.75 m
Area	6.71 m ²
Perimeter	16.33 m



Stairway

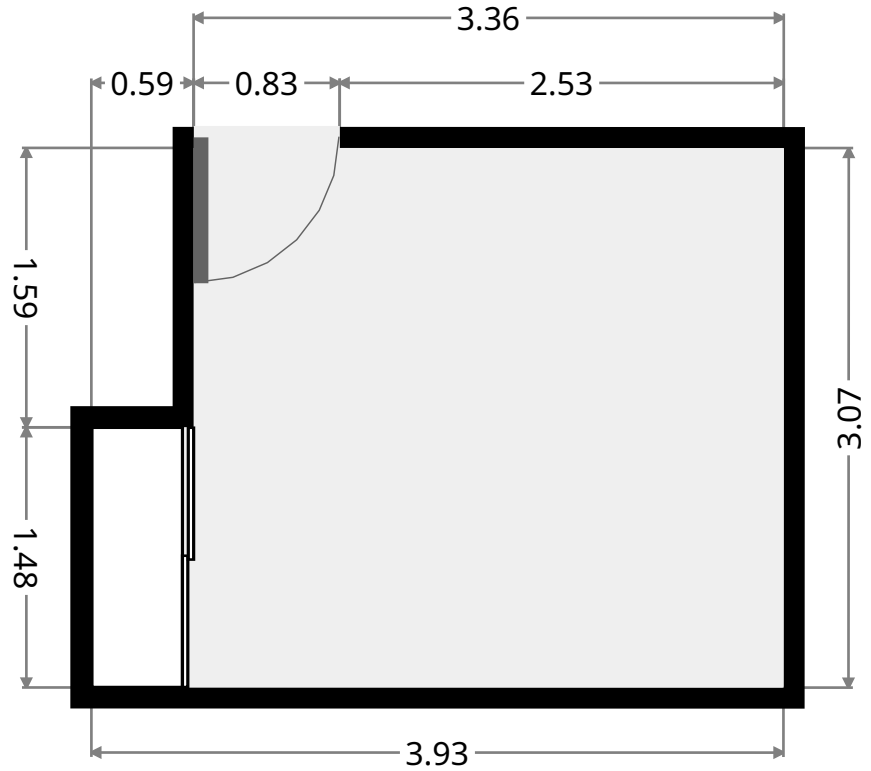
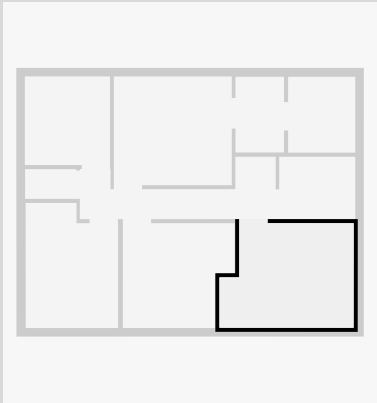
Width:	1.83 m
Length:	2.23 m
Area	4.09 m ²
Perimeter	8.12 m



5 Doongarra Crescent

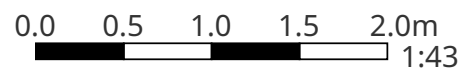
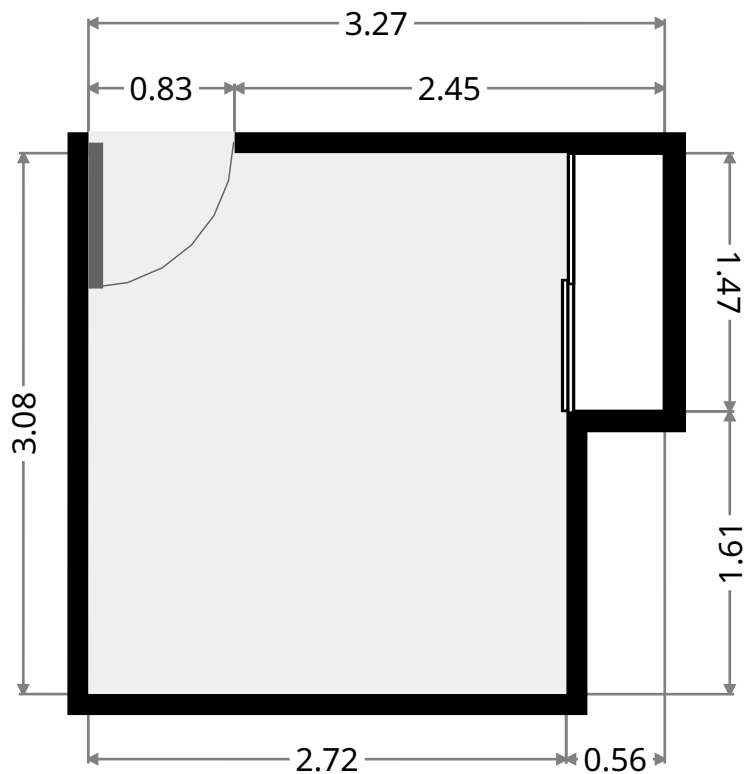
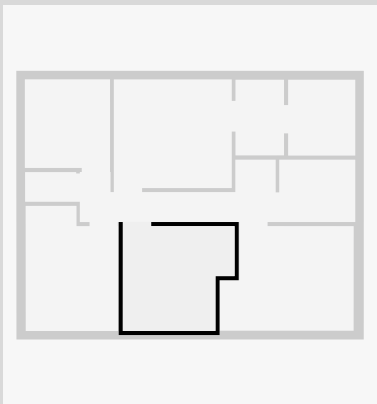
Bedroom

Width: 3.07 m
 Length: 3.93 m
 Area: 11.17 m²
 Perimeter: 14.02 m



Bedroom

Width: 3.08 m
 Length: 3.27 m
 Area: 9.19 m²
 Perimeter: 12.71 m

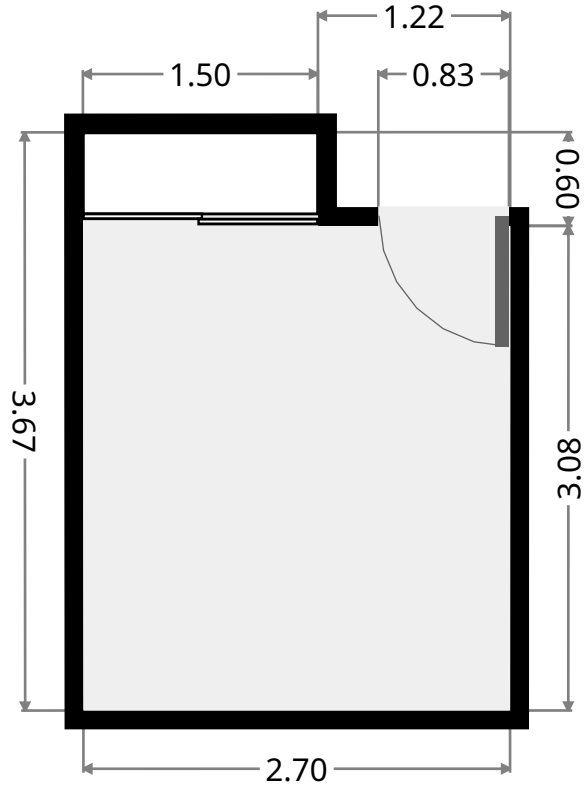
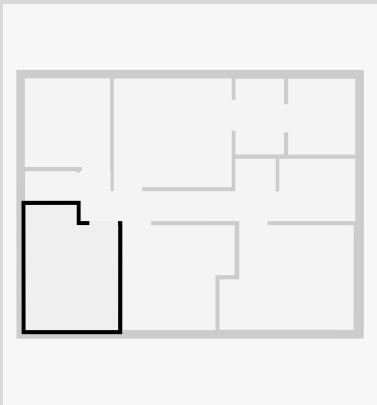


THIS FLOORPLAN IS PROVIDED WITHOUT WARRANTY OF ANY KIND. SENSOPIA DISCLAIMS ANY WARRANTY INCLUDING, WITHOUT LIMITATION, SATISFACTORY QUALITY OR ACCURACY OF DIMENSIONS.

5 Doongarra Crescent

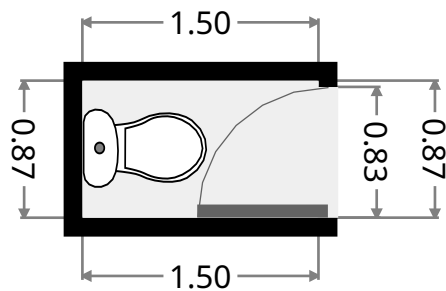
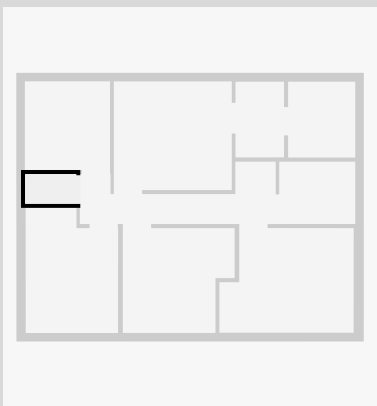
Bedroom

Width: 2.70 m
 Length: 3.67 m
 Area: 9.23 m²
 Perimeter: 12.77 m



Toilet

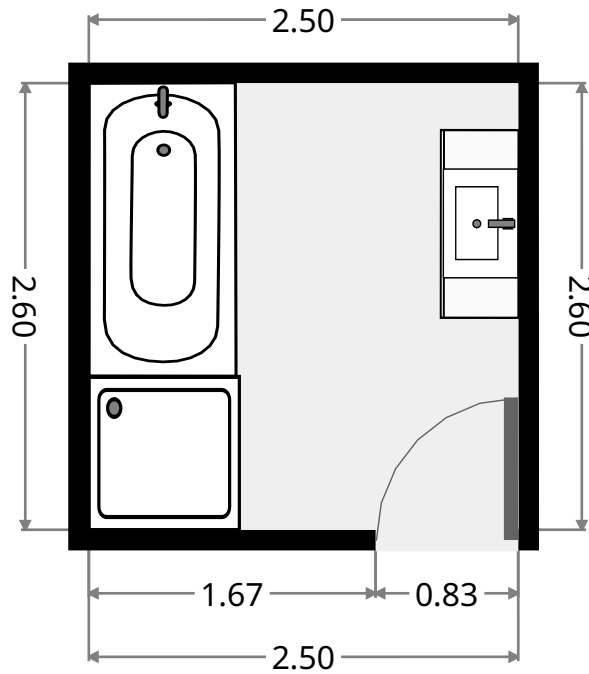
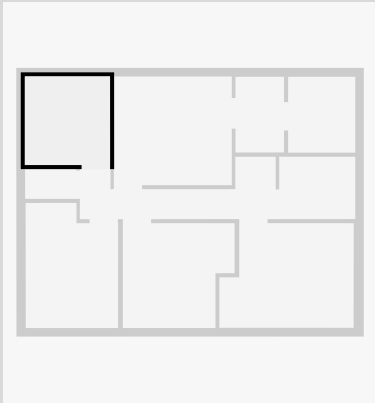
Width: 0.87 m
 Length: 1.50 m
 Area: 1.31 m²
 Perimeter: 4.74 m



5 Doongarra Crescent

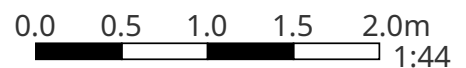
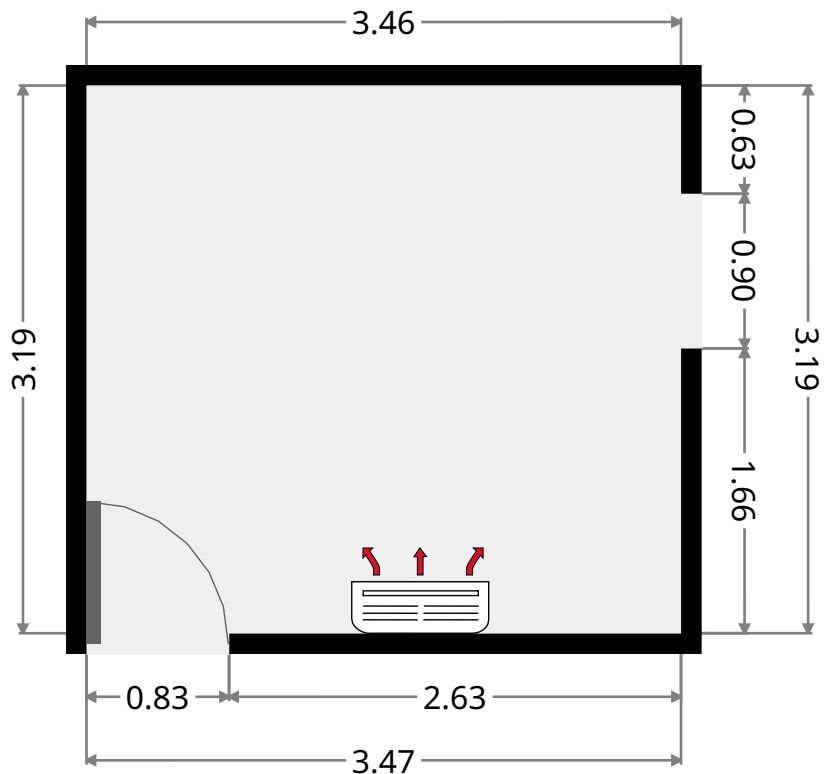
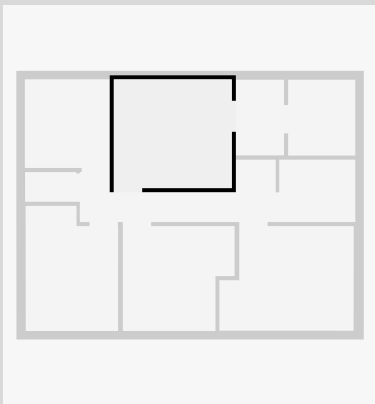
Bathroom

Width: 2.50 m
 Length: 2.60 m
 Area: 6.50 m²
 Perimeter: 10.20 m



Master Bedroom

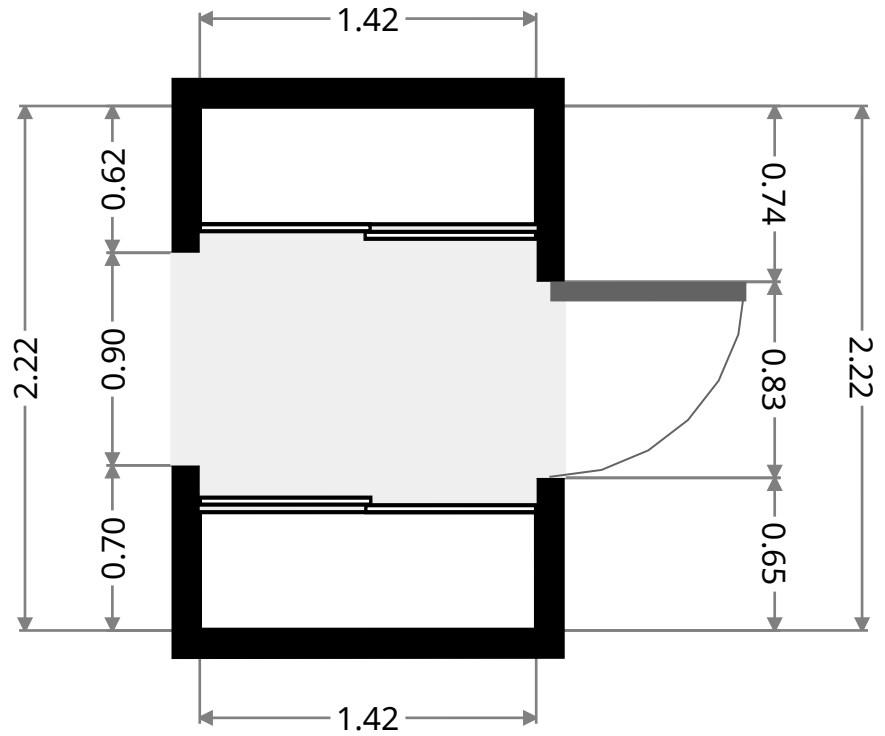
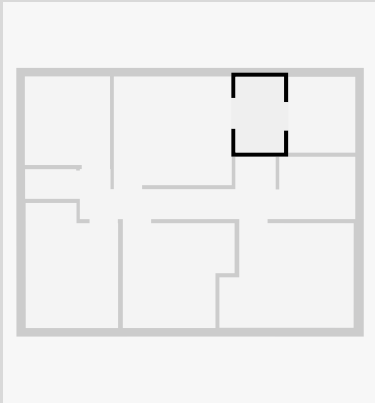
Width: 3.19 m
 Length: 3.46 m
 Area: 11.04 m²
 Perimeter: 13.30 m



5 Doongarra Crescent

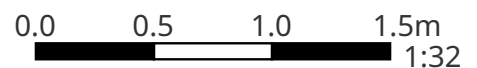
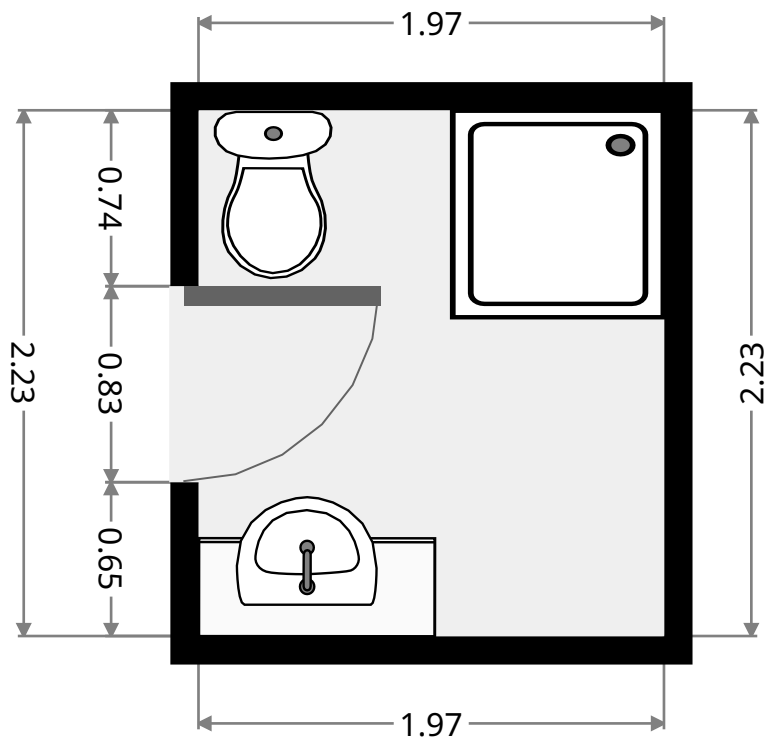
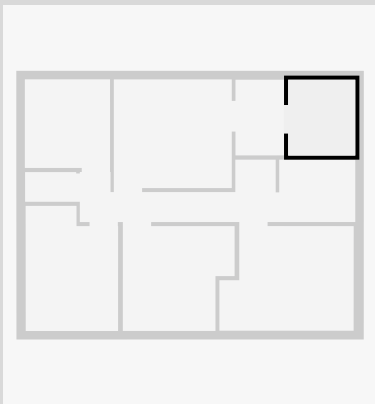
Closet

Width: 1.42 m
 Length: 2.22 m
 Area: 3.16 m²
 Perimeter: 7.29 m



Bathroom

Width: 1.97 m
 Length: 2.23 m
 Area: 4.39 m²
 Perimeter: 8.39 m



THIS FLOORPLAN IS PROVIDED WITHOUT WARRANTY OF ANY KIND. SENSOPIA DISCLAIMS ANY WARRANTY INCLUDING, WITHOUT LIMITATION, SATISFACTORY QUALITY OR ACCURACY OF DIMENSIONS.