

5 Cape Manifold Avenue

SUBMITTED BY

Ray White Rockhampton Casey
stockers@cqoz.com

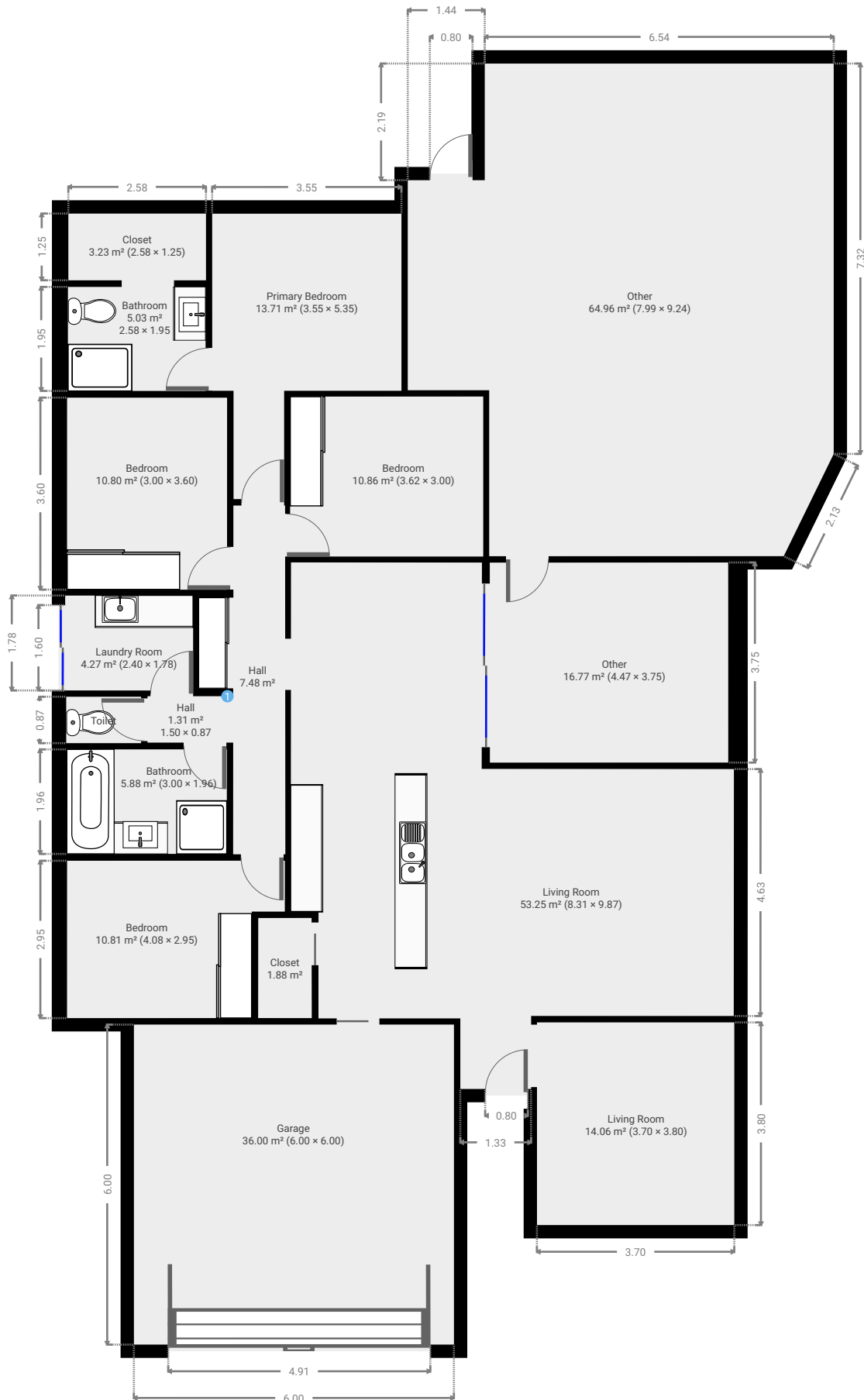
CREATED ON

2022-07-06

Floors

1

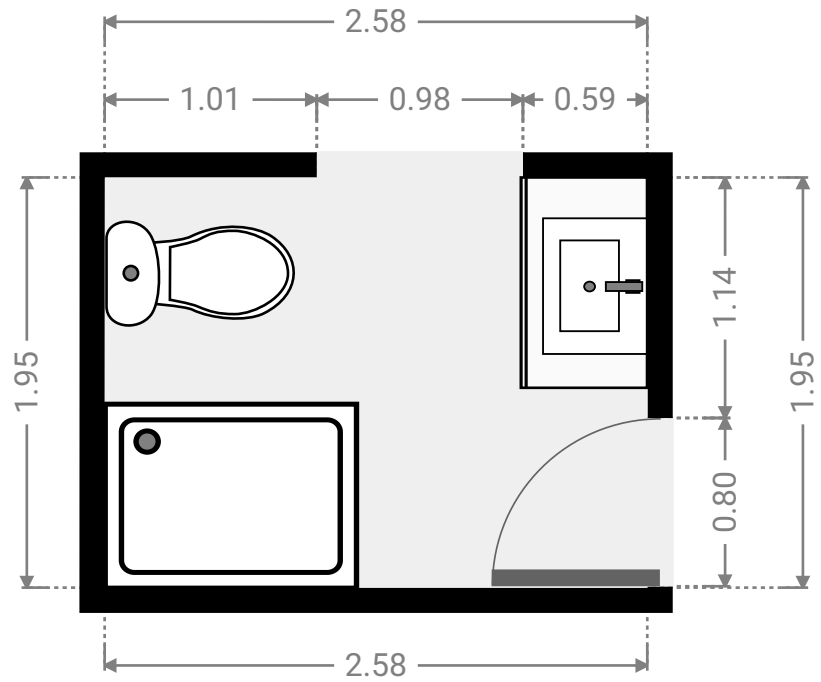
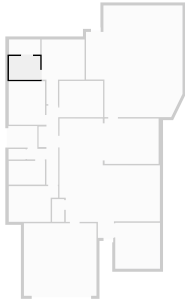
▼ Ground Floor



FLOORS: 1

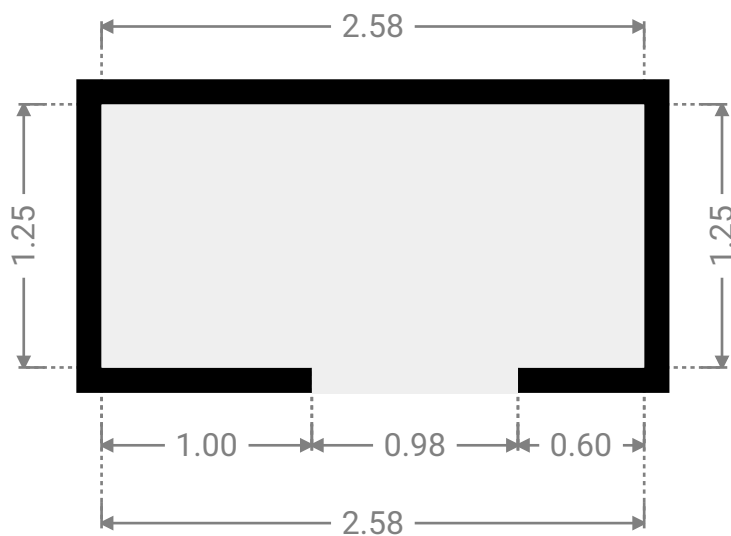
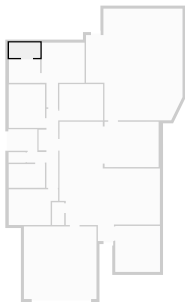
▼ **Bathroom**
Ground Floor

WIDTH: 2.58 m • LENGTH: 1.95 m
AREA: 5.03 m² • PERIMETER: 9.06 m



▼ **Closet**
Ground Floor

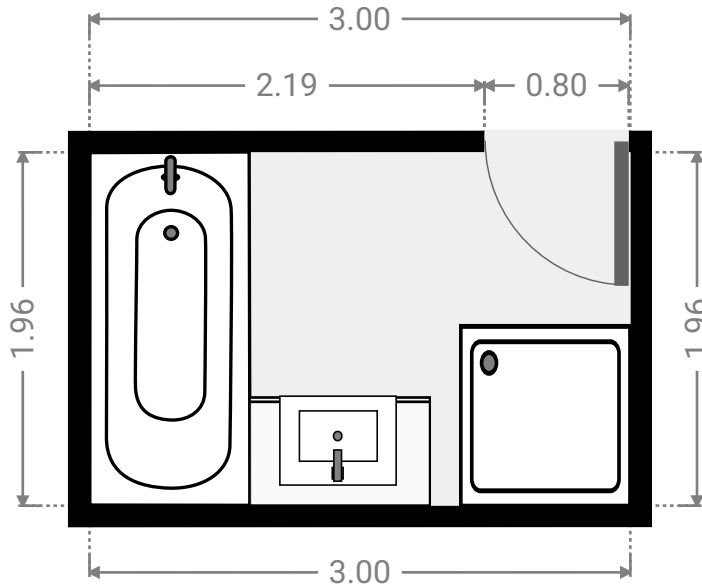
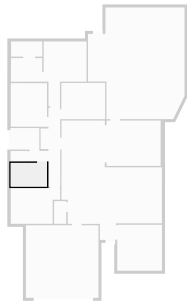
WIDTH: 2.58 m • LENGTH: 1.25 m
AREA: 3.23 m² • PERIMETER: 7.66 m



FLOORS: 1

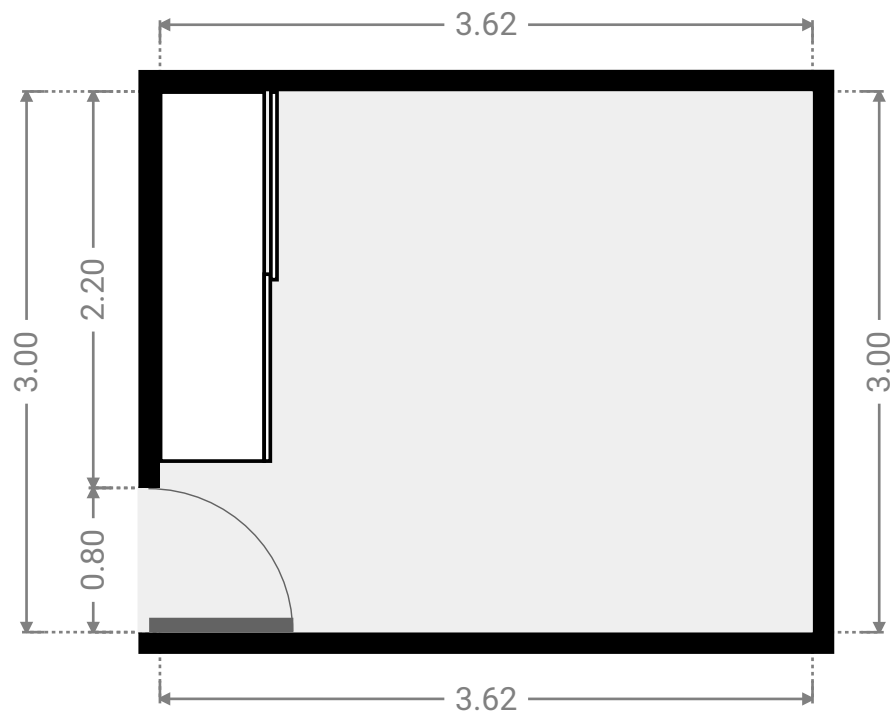
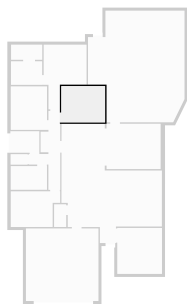
▼ **Bathroom**
Ground Floor

WIDTH: 3.00 m • LENGTH: 1.96 m
AREA: 5.88 m² • PERIMETER: 9.92 m



▼ **Bedroom**
Ground Floor

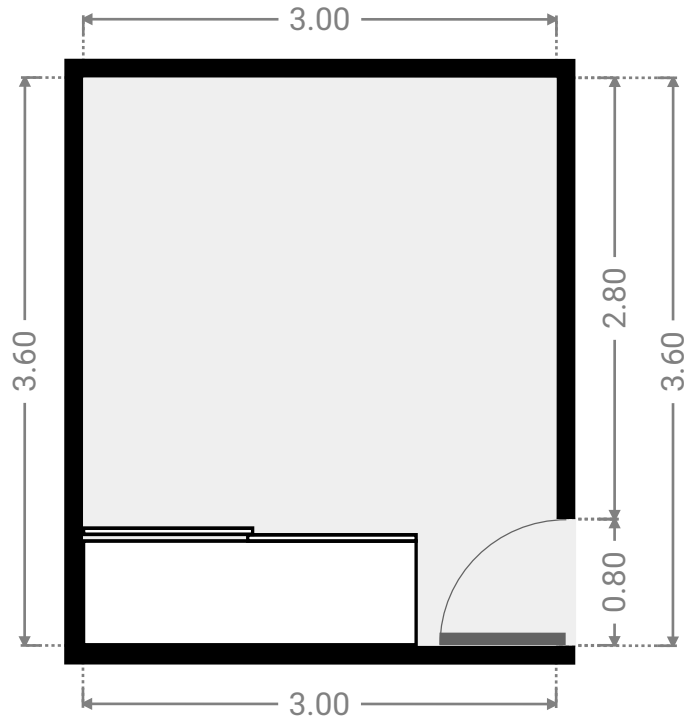
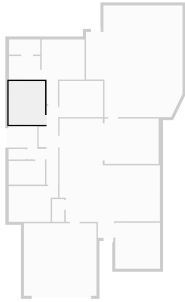
WIDTH: 3.62 m • LENGTH: 3.00 m
AREA: 10.86 m² • PERIMETER: 13.24 m



FLOORS: 1

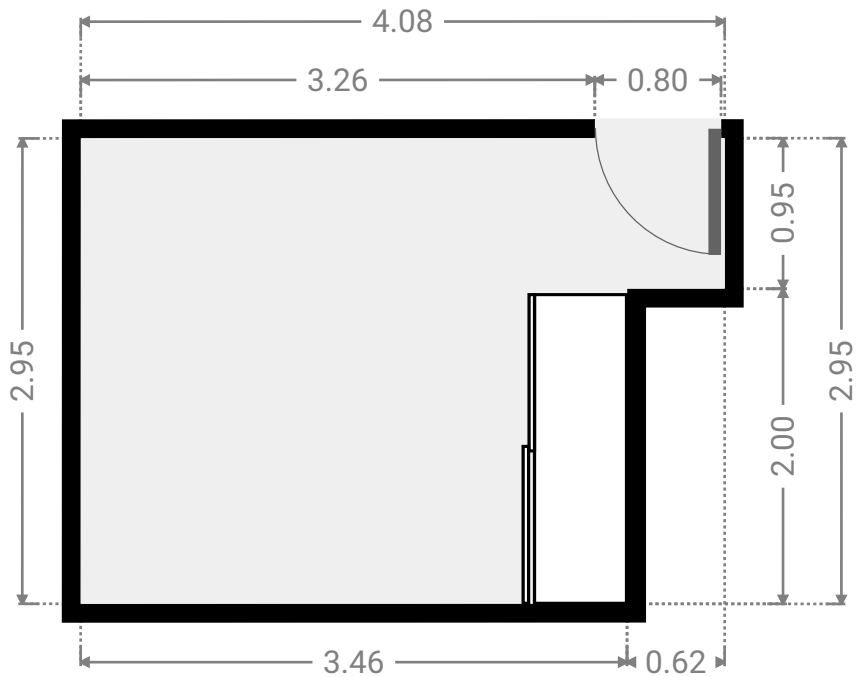
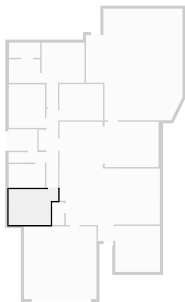
▼ **Bedroom**
Ground Floor

WIDTH: 3.00 m • LENGTH: 3.60 m
AREA: 10.80 m² • PERIMETER: 13.20 m



▼ **Bedroom**
Ground Floor

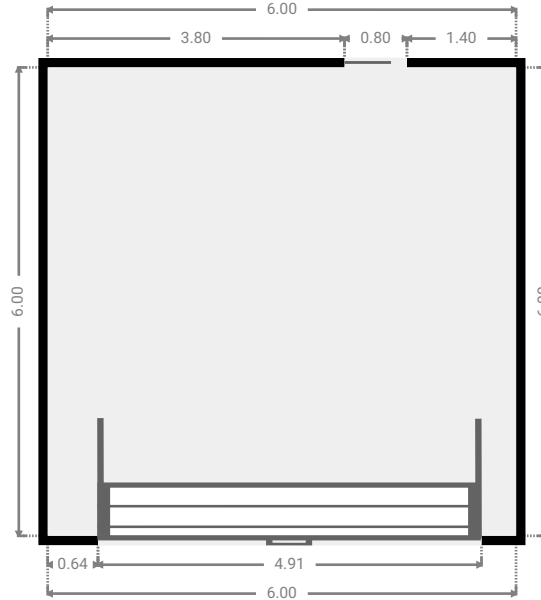
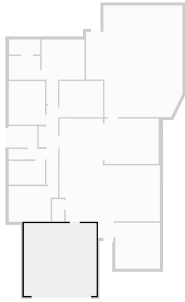
WIDTH: 4.08 m • LENGTH: 2.95 m
AREA: 10.81 m² • PERIMETER: 14.07 m



FLOORS: 1

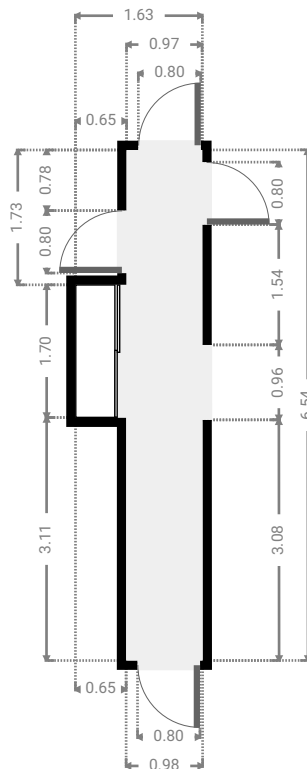
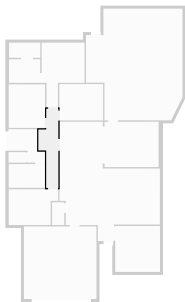
▼ **Garage**
Ground Floor

WIDTH: 6.00 m • LENGTH: 6.00 m
AREA: 36.00 m² • PERIMETER: 24.00 m



▼ **Hall**
Ground Floor

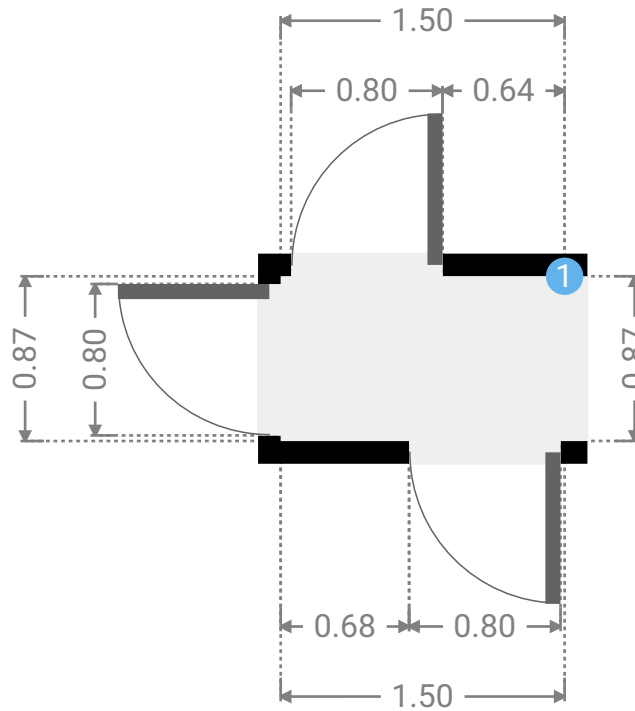
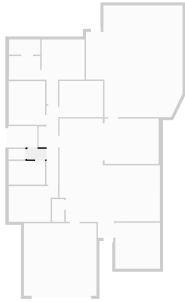
WIDTH: 1.63 m • LENGTH: 6.54 m
AREA: 7.48 m² • PERIMETER: 16.33 m



FLOORS: 1

▼ Hall Ground Floor

WIDTH: 1.50 m • LENGTH: 0.87 m
AREA: 1.31 m² • PERIMETER: 4.74 m



▼ Hall/Ground Floor

1 OPENING

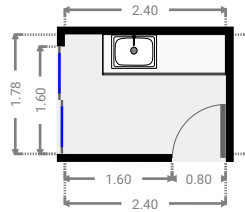
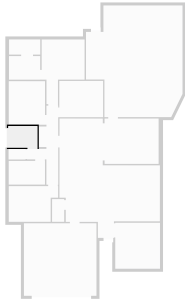
Height
0.00 m



FLOORS: 1

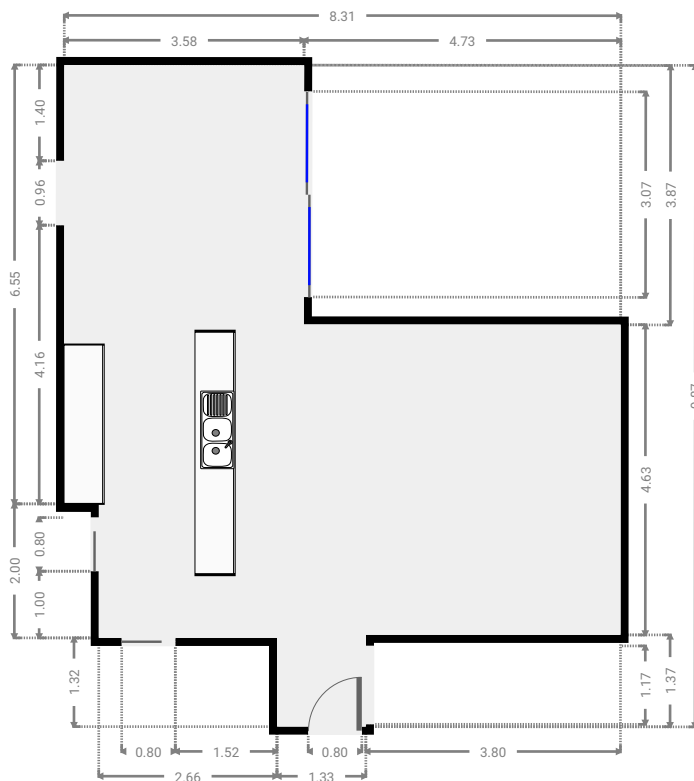
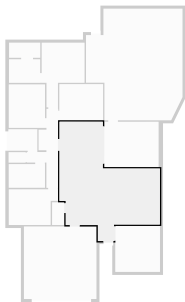
▼ **Laundry Room**
Ground Floor

WIDTH: 2.40 m • LENGTH: 1.78 m
AREA: 4.27 m² • PERIMETER: 8.36 m



▼ **Living Room**
Ground Floor

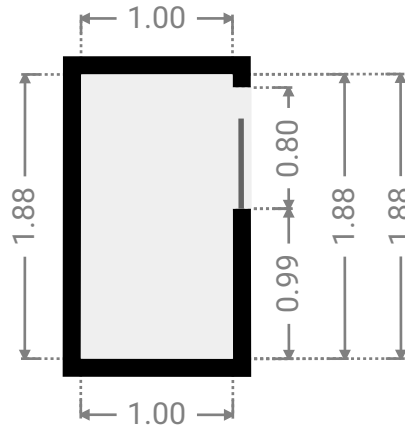
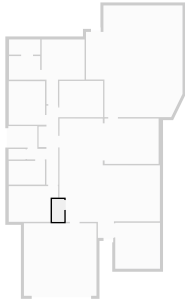
WIDTH: 8.31 m • LENGTH: 9.87 m
AREA: 53.25 m² • PERIMETER: 36.36 m



FLOORS: 1

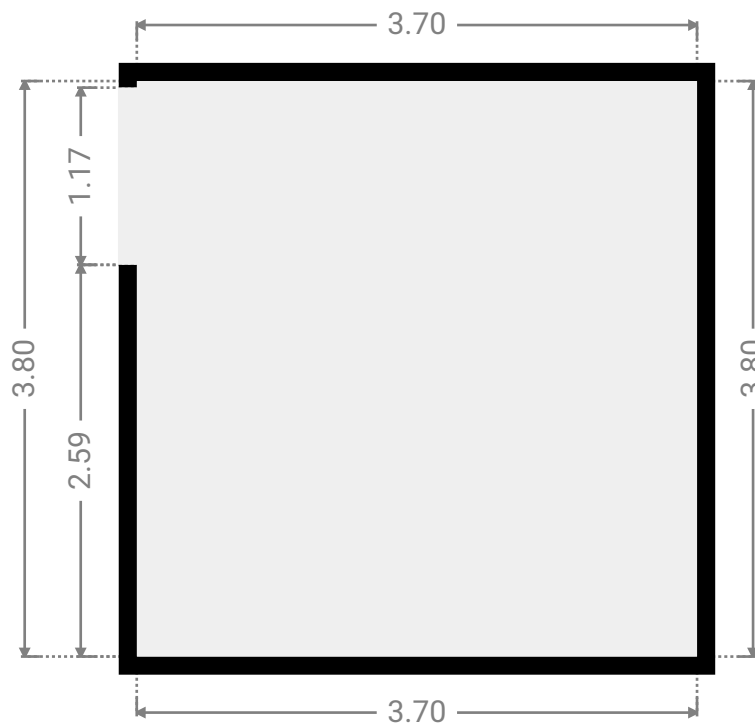
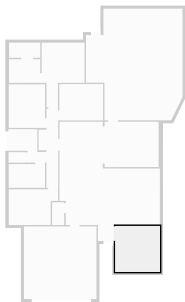
▼ Closet
Ground Floor

WIDTH: 1.00 m • LENGTH: 1.88 m
AREA: 1.88 m² • PERIMETER: 5.76 m



▼ Living Room
Ground Floor

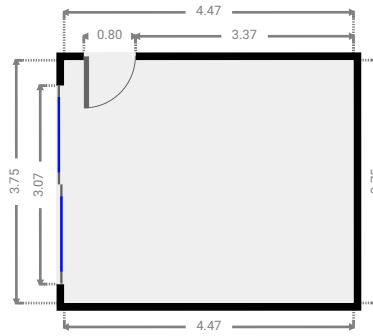
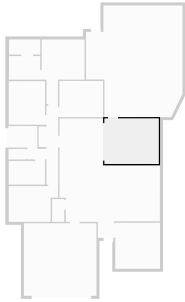
WIDTH: 3.70 m • LENGTH: 3.80 m
AREA: 14.06 m² • PERIMETER: 15.00 m



FLOORS: 1

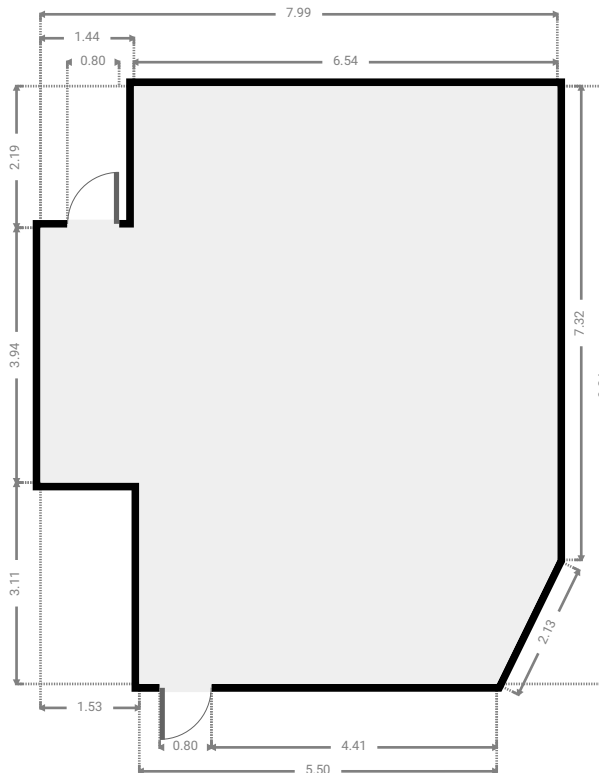
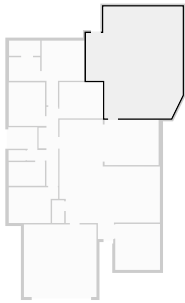
▼ Other
Ground Floor

WIDTH: 4.47 m • LENGTH: 3.75 m
AREA: 16.77 m² • PERIMETER: 16.44 m



▼ Other
Ground Floor

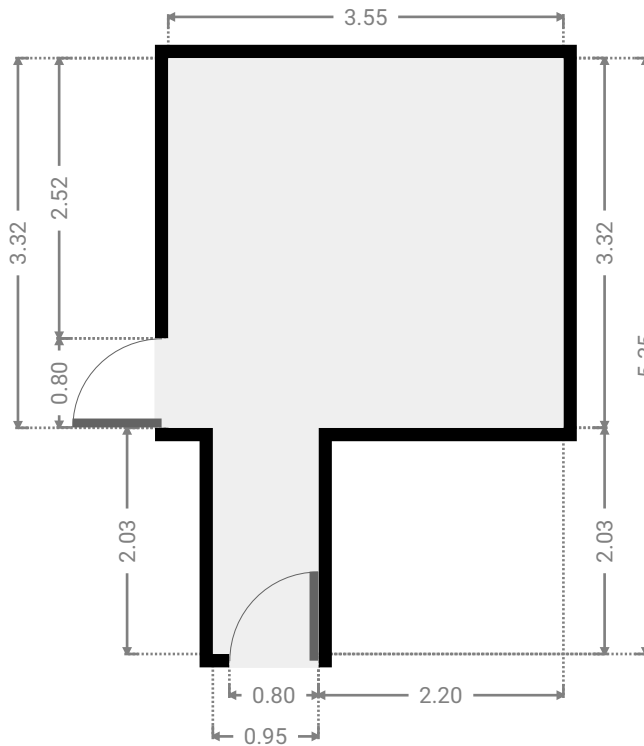
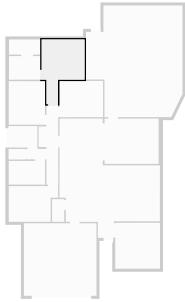
WIDTH: 7.99 m • LENGTH: 9.24 m
AREA: 64.96 m² • PERIMETER: 33.73 m



FLOORS: 1

▼ **Primary Bedroom**
Ground Floor

WIDTH: 3.55 m • LENGTH: 5.35 m
AREA: 13.71 m² • PERIMETER: 17.80 m



▼ **Toilet**
Ground Floor

WIDTH: 1.40 m • LENGTH: 0.87 m
AREA: 1.22 m² • PERIMETER: 4.55 m

