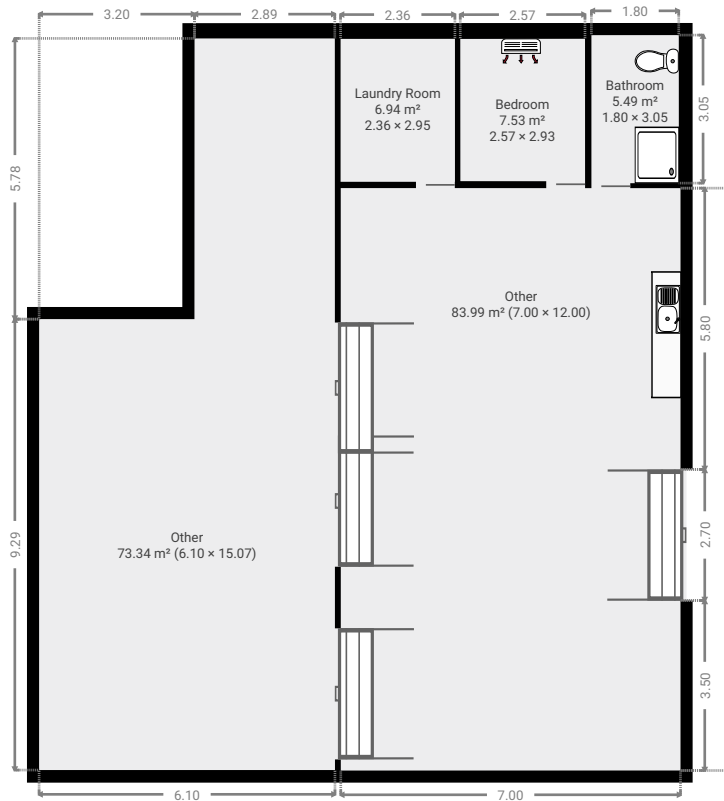
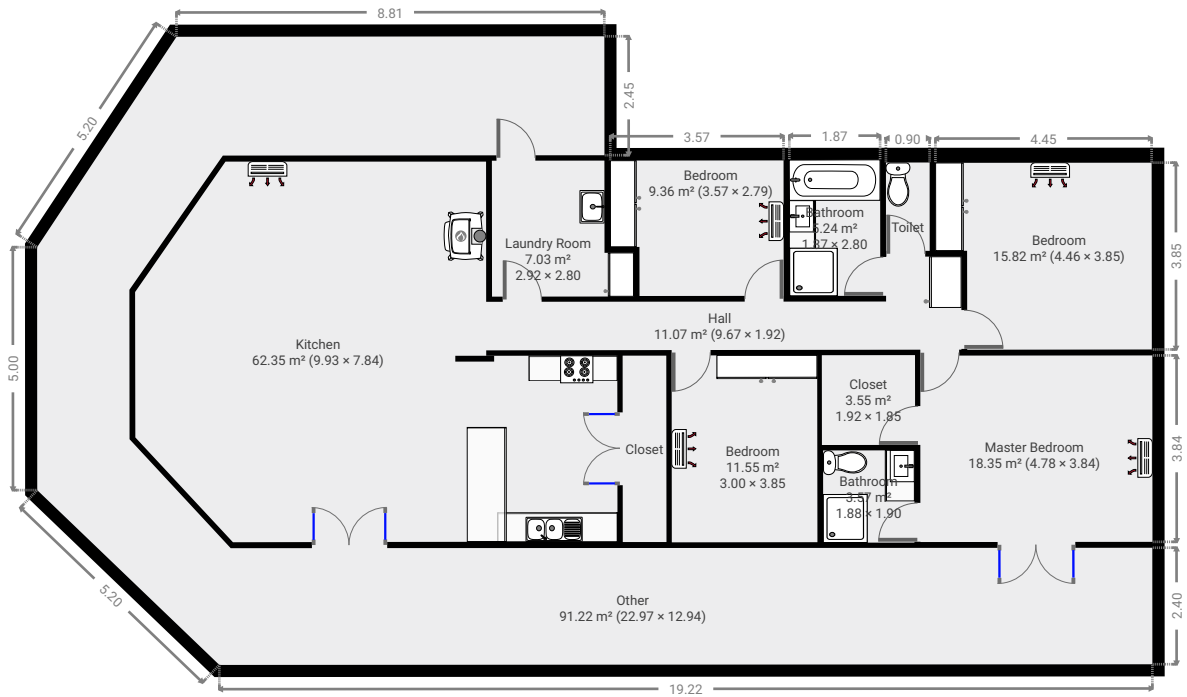


5 Callaghan Lane

Created on
2021-03-19

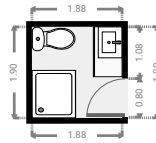
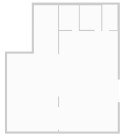
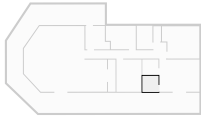
Floors
1

▼ Ground Floor



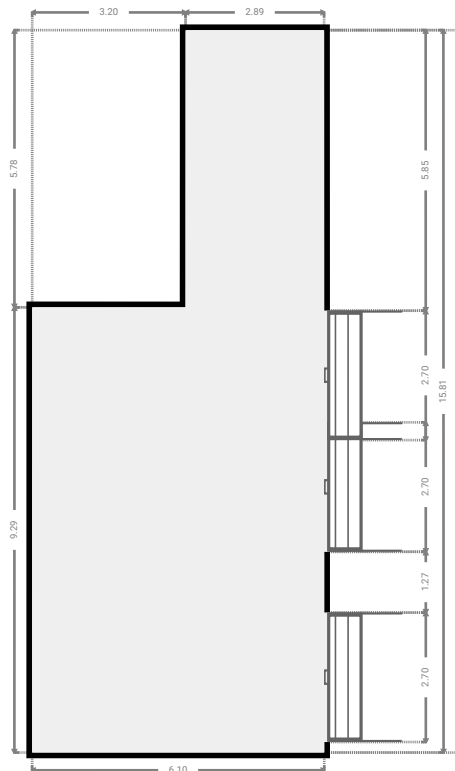
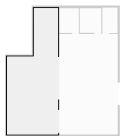
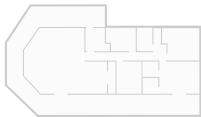
▼ Bathroom
Ground Floor

WIDTH: 1.88 m • LENGTH: 1.90 m
AREA: 3.57 m² • PERIMETER: 7.56 m



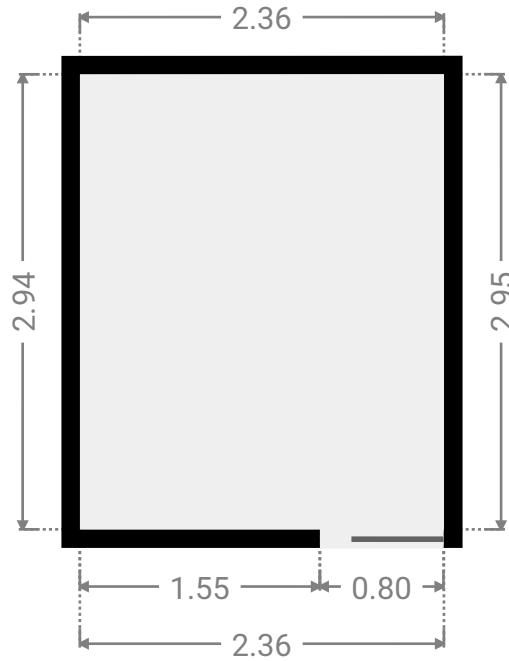
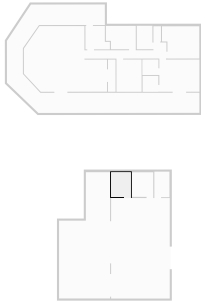
▼ Other
Ground Floor

WIDTH: 6.10 m • LENGTH: 15.07 m
AREA: 73.34 m² • PERIMETER: 42.33 m



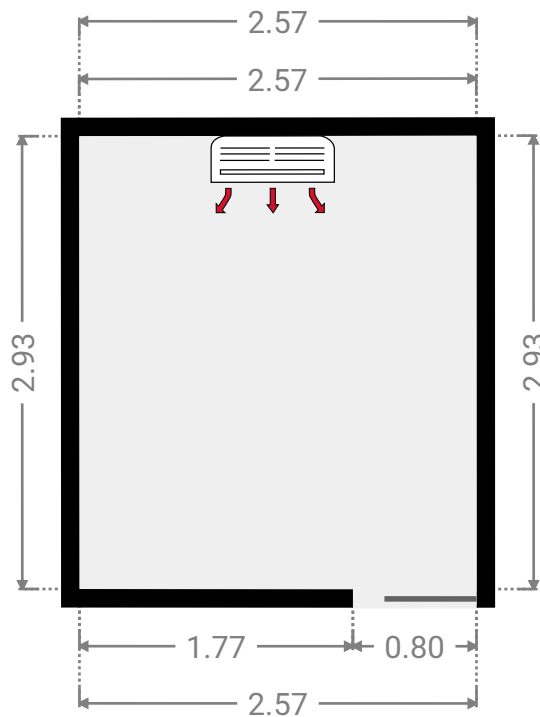
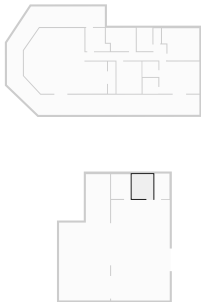
▼ **Laundry Room**
Ground Floor

WIDTH: 2.36 m • LENGTH: 2.95 m
AREA: 6.94 m² • PERIMETER: 10.60 m



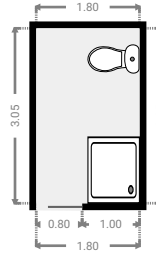
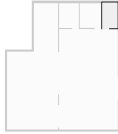
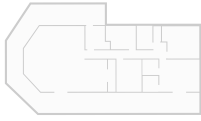
▼ **Bedroom**
Ground Floor

WIDTH: 2.57 m • LENGTH: 2.93 m
AREA: 7.53 m² • PERIMETER: 11.00 m



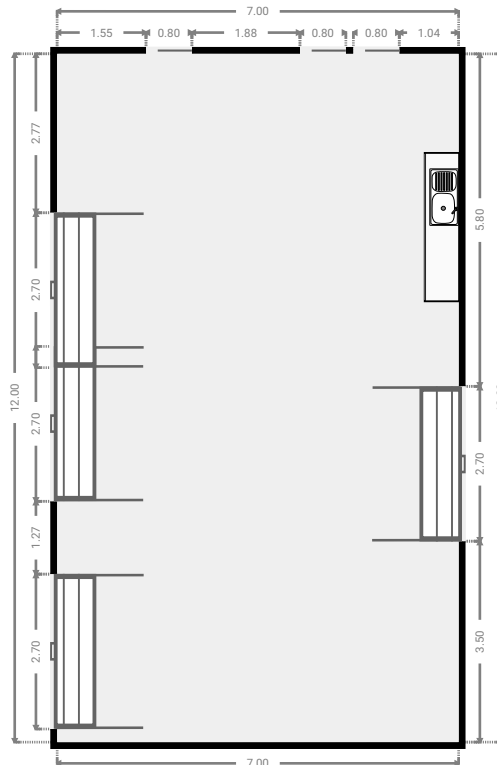
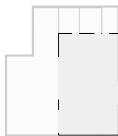
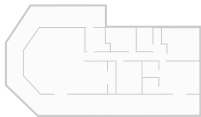
▼ Bathroom
Ground Floor

WIDTH: 1.80 m • LENGTH: 3.05 m
AREA: 5.49 m² • PERIMETER: 9.70 m



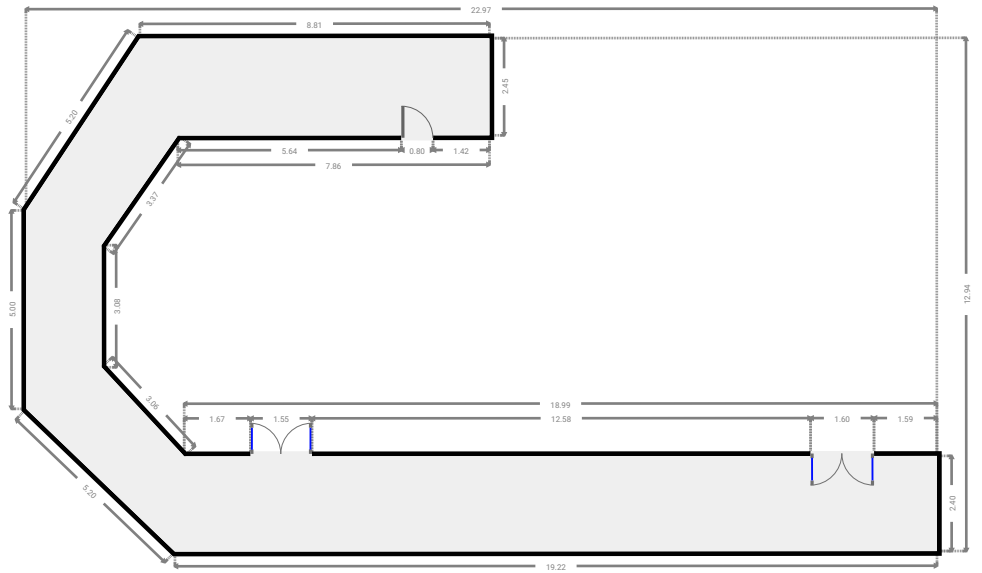
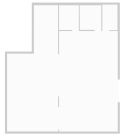
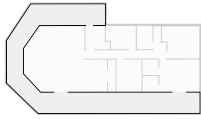
▼ Other
Ground Floor

WIDTH: 7.00 m • LENGTH: 12.00 m
AREA: 83.99 m² • PERIMETER: 38.00 m



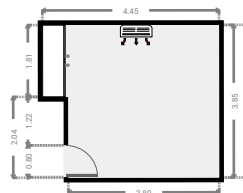
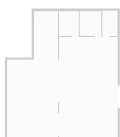
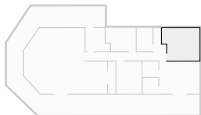
▼ Other
Ground Floor

WIDTH: 22.97 m • LENGTH: 12.94 m
AREA: 91.22 m² • PERIMETER: 84.66 m



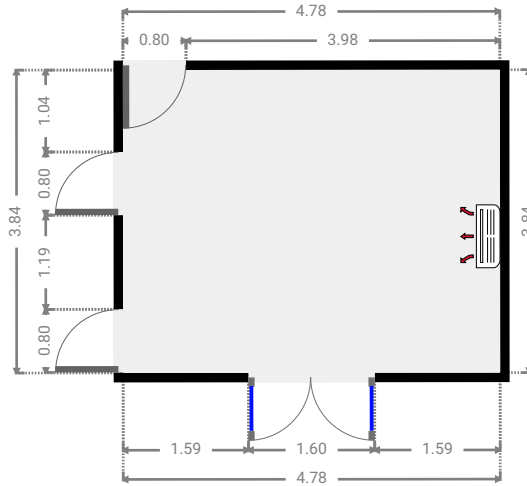
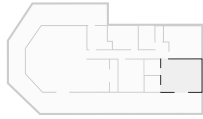
▼ Bedroom
Ground Floor

WIDTH: 4.46 m • LENGTH: 3.85 m
AREA: 15.82 m² • PERIMETER: 16.61 m



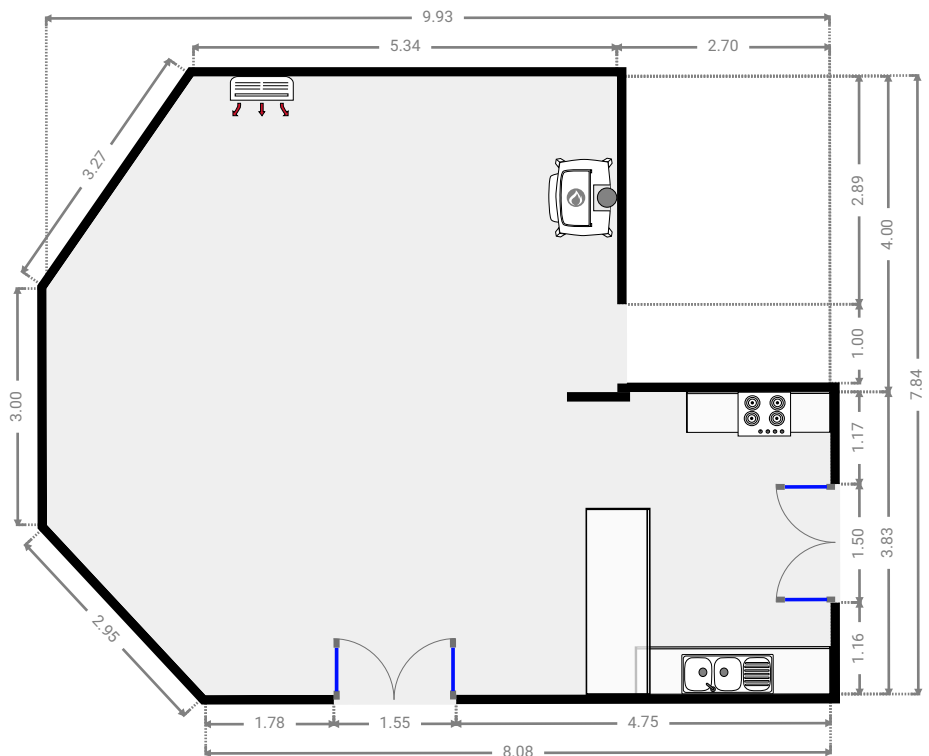
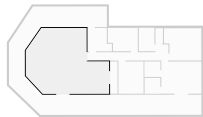
▼ Master Bedroom
Ground Floor

WIDTH: 4.78 m • LENGTH: 3.84 m
AREA: 18.35 m² • PERIMETER: 17.24 m



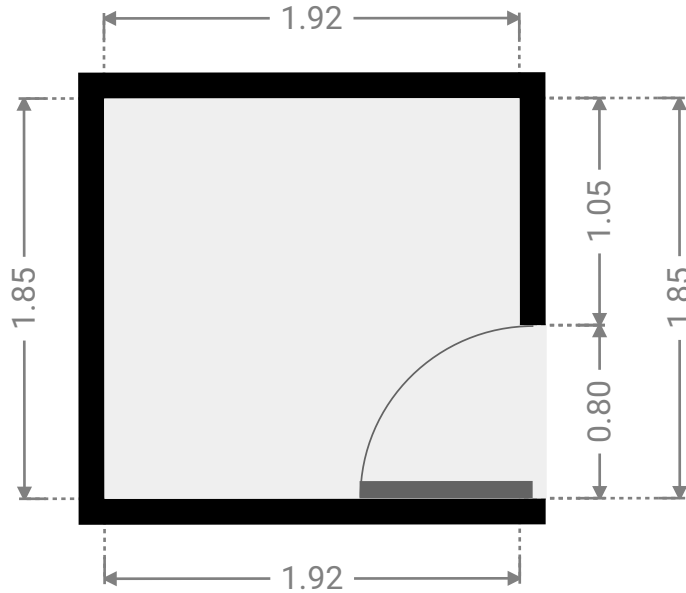
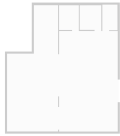
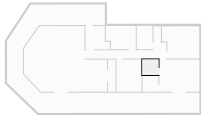
▼ Kitchen
Ground Floor

WIDTH: 9.93 m • LENGTH: 7.84 m
AREA: 62.35 m² • PERIMETER: 33.04 m



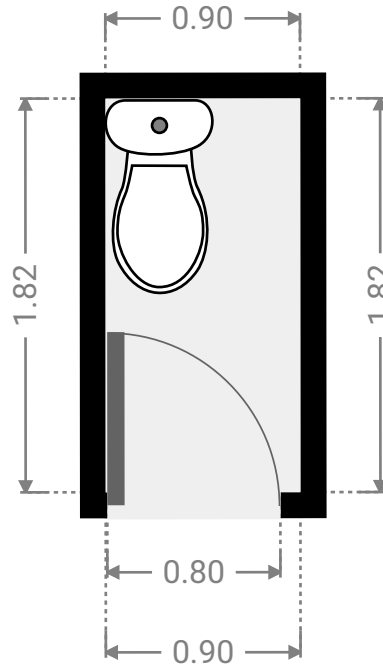
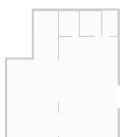
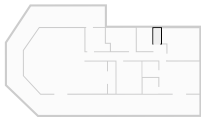
▼ **Closet**
Ground Floor

WIDTH: 1.92 m • LENGTH: 1.85 m
AREA: 3.55 m² • PERIMETER: 7.54 m



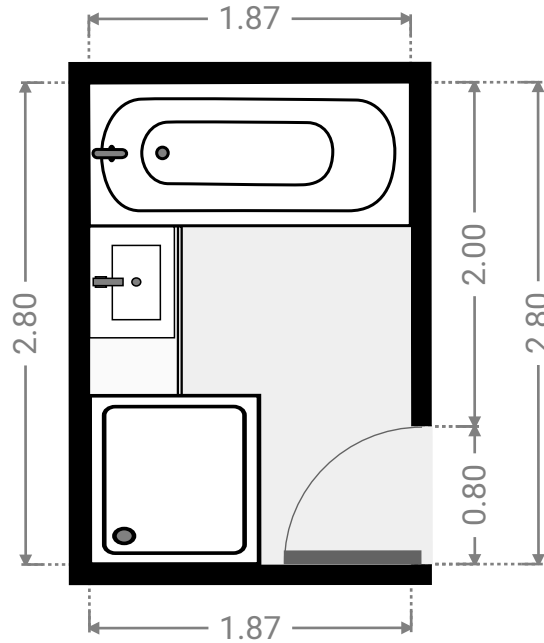
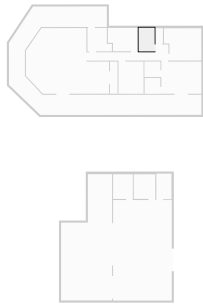
▼ **Toilet**
Ground Floor

WIDTH: 0.90 m • LENGTH: 1.82 m
AREA: 1.64 m² • PERIMETER: 5.44 m



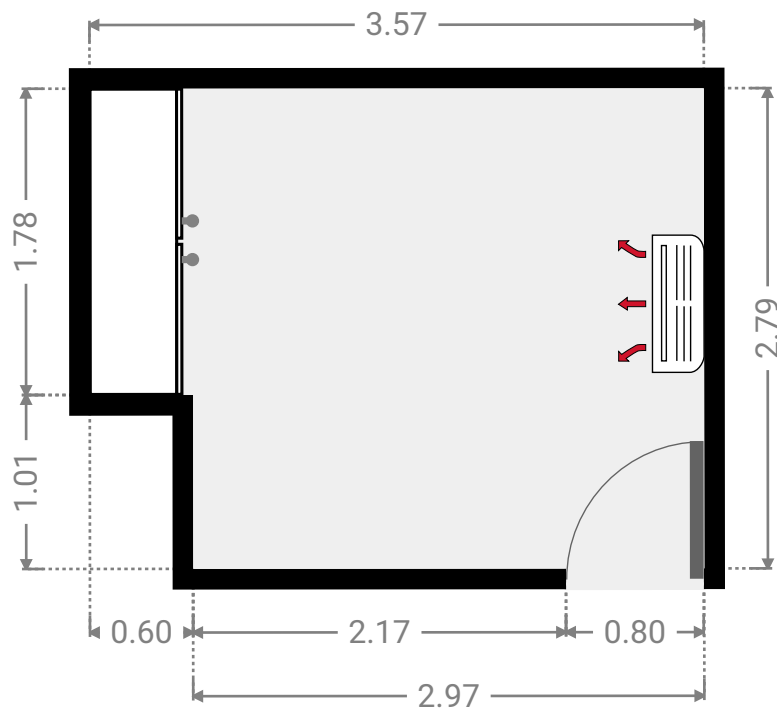
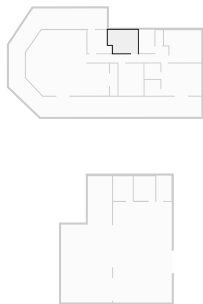
▼ **Bathroom**
Ground Floor

WIDTH: 1.87 m • LENGTH: 2.80 m
AREA: 5.24 m² • PERIMETER: 9.34 m



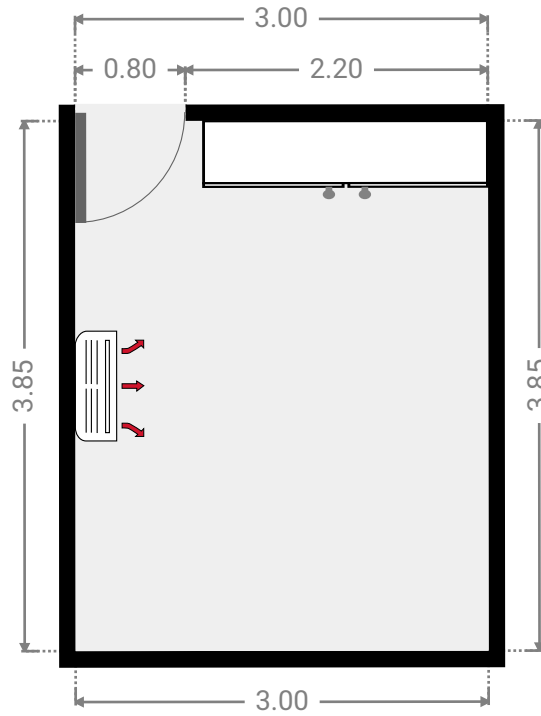
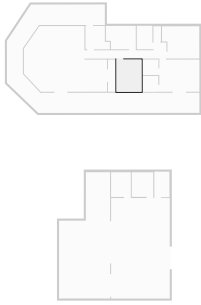
▼ **Bedroom**
Ground Floor

WIDTH: 3.57 m • LENGTH: 2.79 m
AREA: 9.36 m² • PERIMETER: 12.72 m



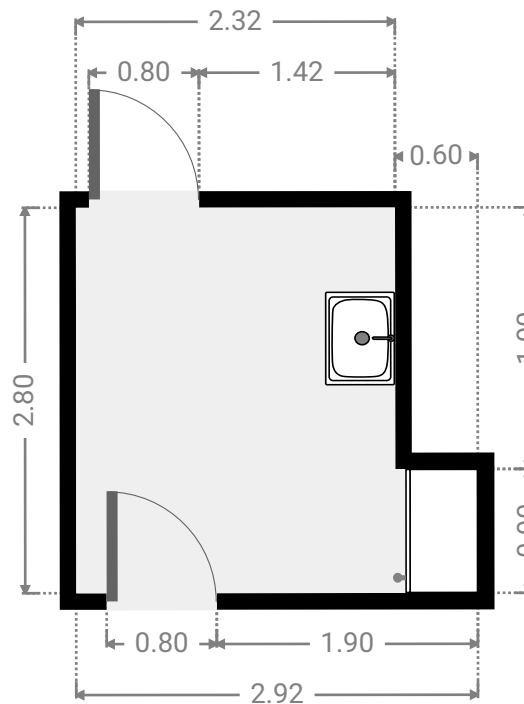
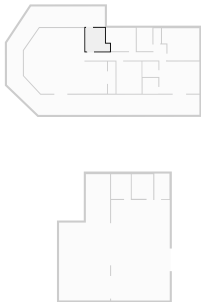
▼ **Bedroom**
Ground Floor

WIDTH: 3.00 m • LENGTH: 3.85 m
AREA: 11.55 m² • PERIMETER: 13.70 m



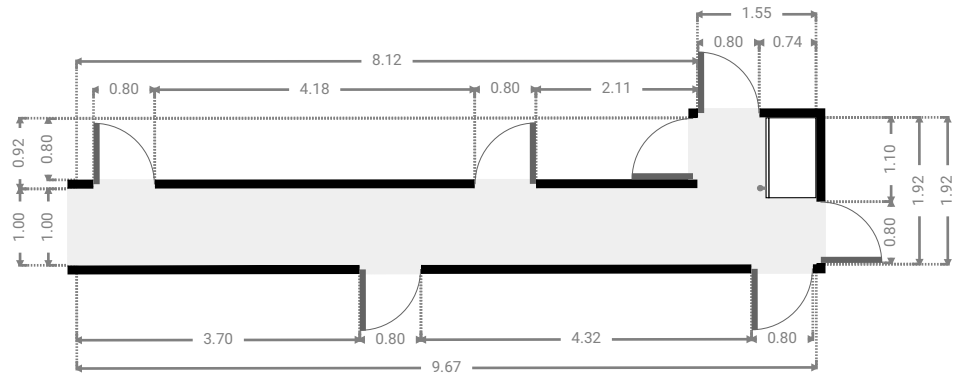
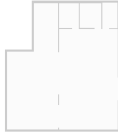
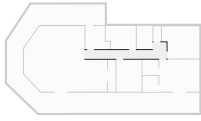
▼ **Laundry Room**
Ground Floor

WIDTH: 2.92 m • LENGTH: 2.80 m
AREA: 7.03 m² • PERIMETER: 11.44 m



▼ Hall
Ground Floor

WIDTH: 9.67 m • LENGTH: 1.92 m
AREA: 11.07 m² • PERIMETER: 23.18 m



▼ Closet
Ground Floor

WIDTH: 0.90 m • LENGTH: 3.84 m
AREA: 3.45 m² • PERIMETER: 9.48 m

