

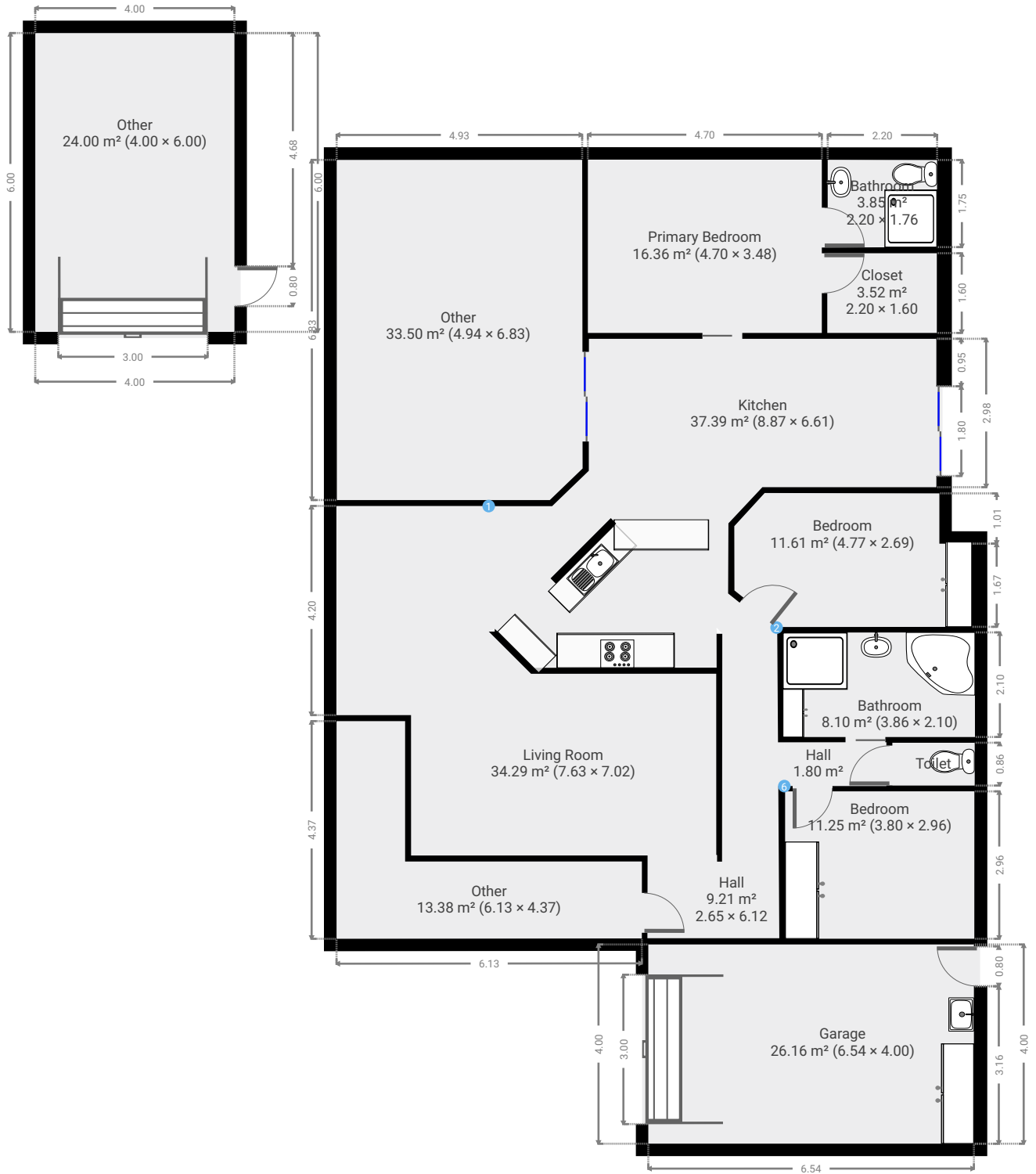
5 Blyth Avenue

SUBMITTED BY
Ray White Rockhampton Casey
stockers@cqoz.com

CREATED ON
2022-08-02

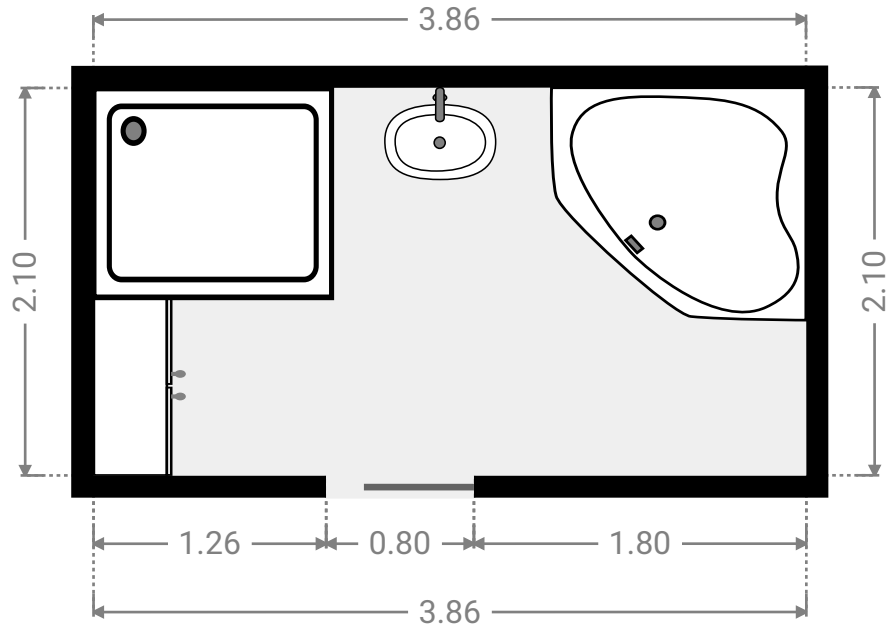
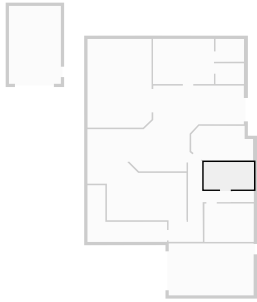
Floors
1

▼ Ground Floor



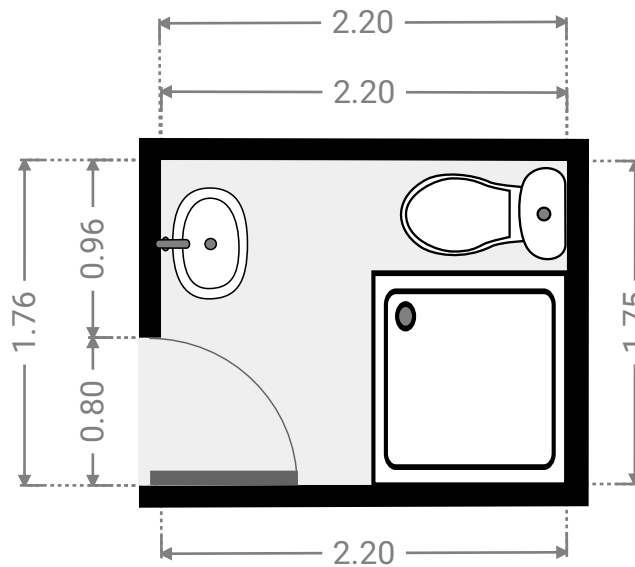
▼ **Bathroom**
Ground Floor

WIDTH: 3.86 m • LENGTH: 2.10 m
AREA: 8.10 m² • PERIMETER: 11.92 m



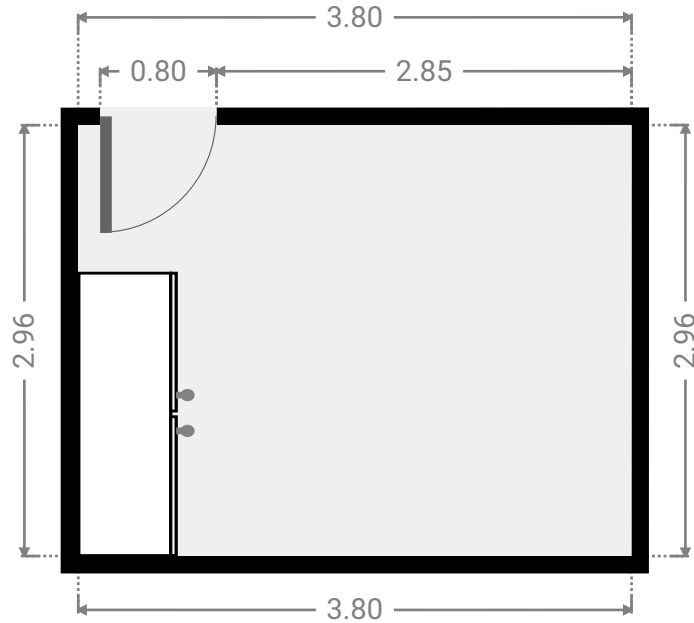
▼ **Bathroom**
Ground Floor

WIDTH: 2.20 m • LENGTH: 1.76 m
AREA: 3.85 m² • PERIMETER: 7.90 m



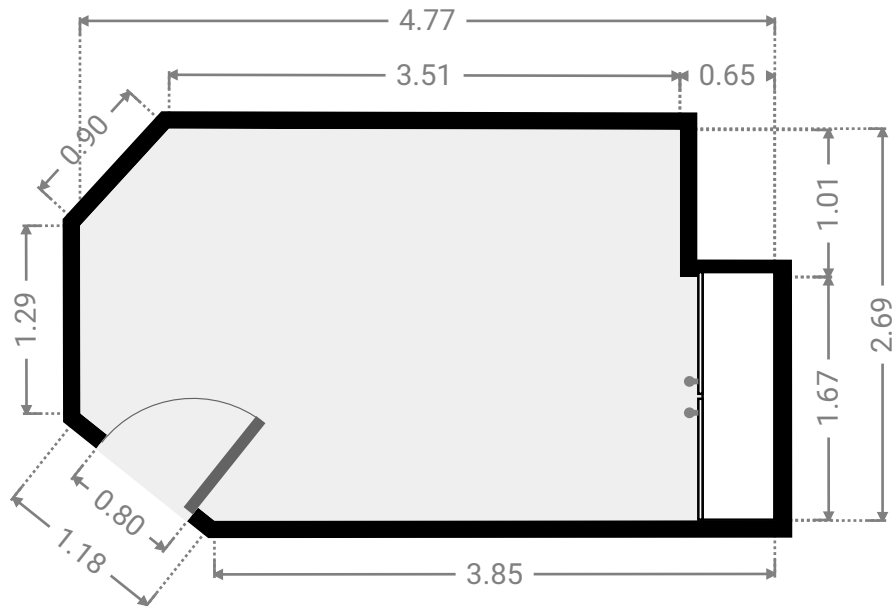
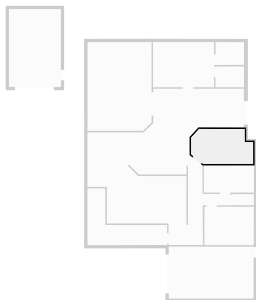
▼ **Bedroom**
Ground Floor

WIDTH: 3.80 m • LENGTH: 2.96 m
AREA: 11.25 m² • PERIMETER: 13.52 m



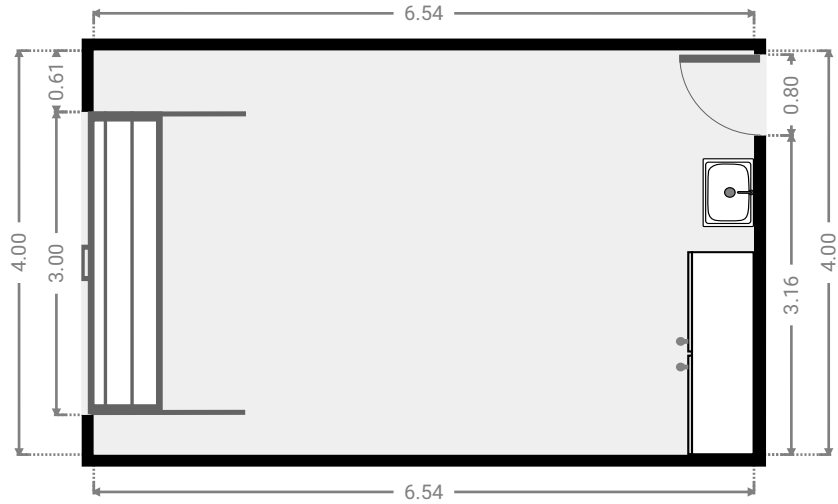
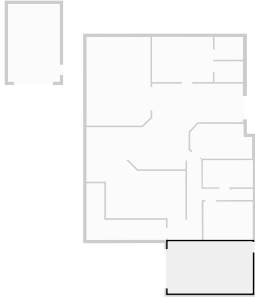
▼ **Bedroom**
Ground Floor

WIDTH: 4.77 m • LENGTH: 2.69 m
AREA: 11.61 m² • PERIMETER: 14.06 m



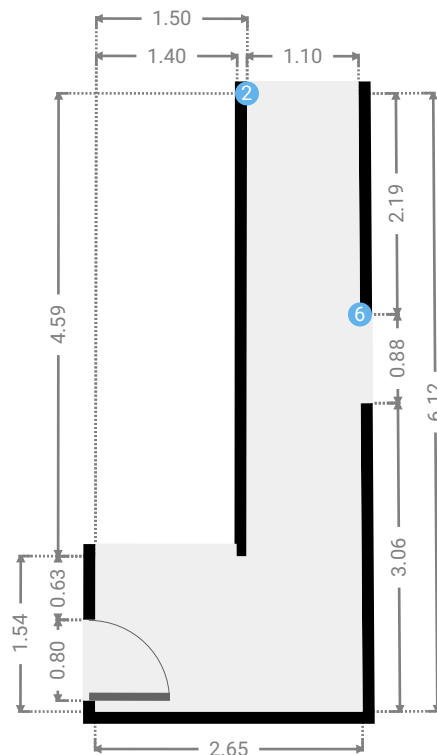
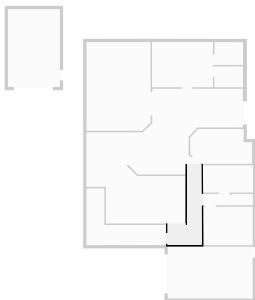
▼ Garage Ground Floor

WIDTH: 6.54 m • LENGTH: 4.00 m
AREA: 26.16 m² • PERIMETER: 21.08 m



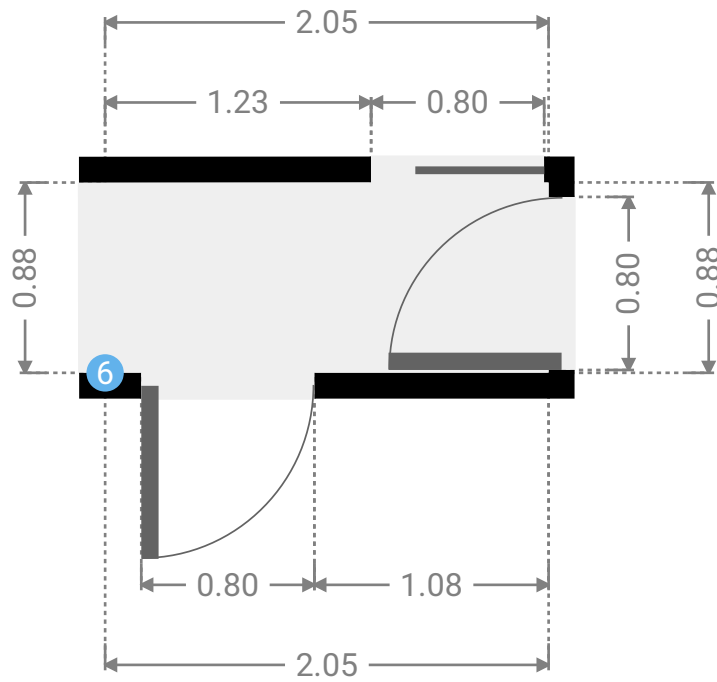
▼ Hall Ground Floor

WIDTH: 2.65 m • LENGTH: 6.12 m
AREA: 9.21 m² • PERIMETER: 17.50 m



▼ **Hall**
Ground Floor

WIDTH: 2.05 m • LENGTH: 0.88 m
AREA: 1.80 m² • PERIMETER: 5.86 m



▼ **Hall/Ground Floor**

6 OPENING

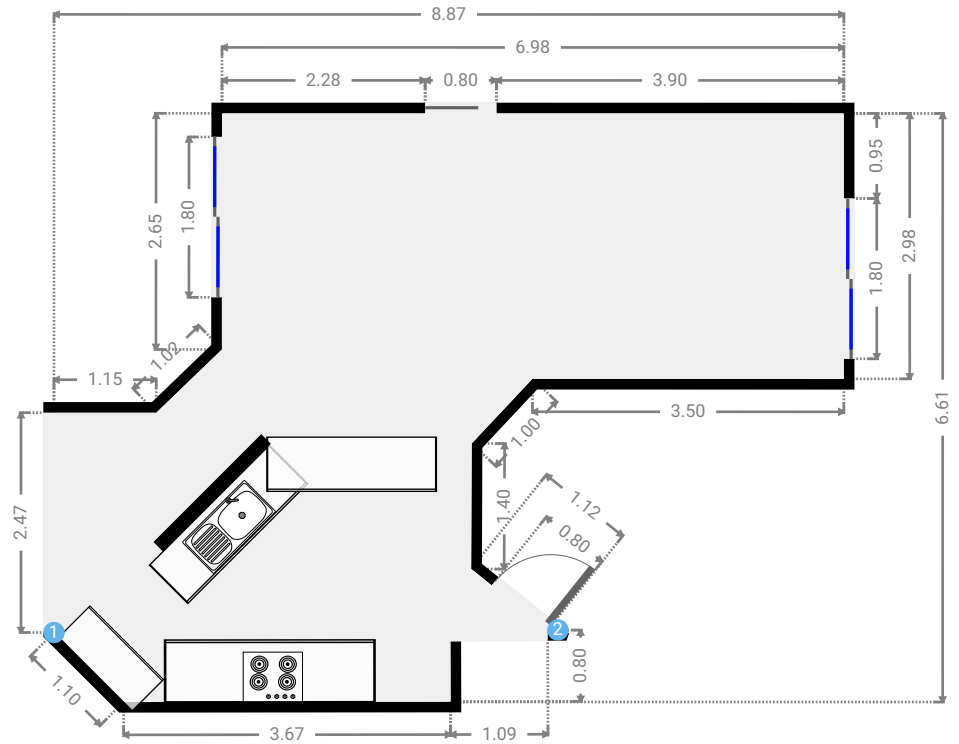
Height
0.00 m



FLOORS: 1

▼ Kitchen
Ground Floor

WIDTH: 8.87 m • LENGTH: 6.61 m
AREA: 37.39 m² • PERIMETER: 30.91 m



▼ Kitchen/Ground Floor

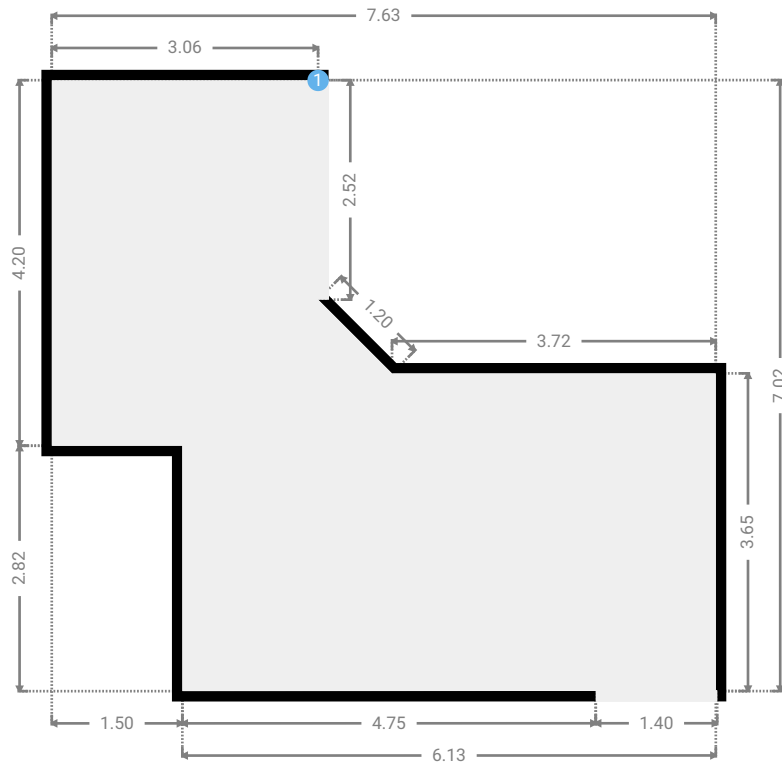
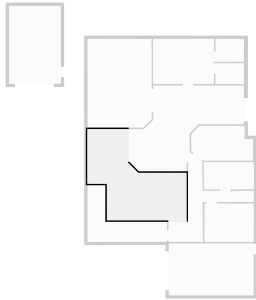
2 OPENING

Height
0.00 m



▼ Living Room Ground Floor

WIDTH: 7.63 m • LENGTH: 7.02 m
AREA: 34.29 m² • PERIMETER: 28.80 m



▼ Living Room/Ground Floor

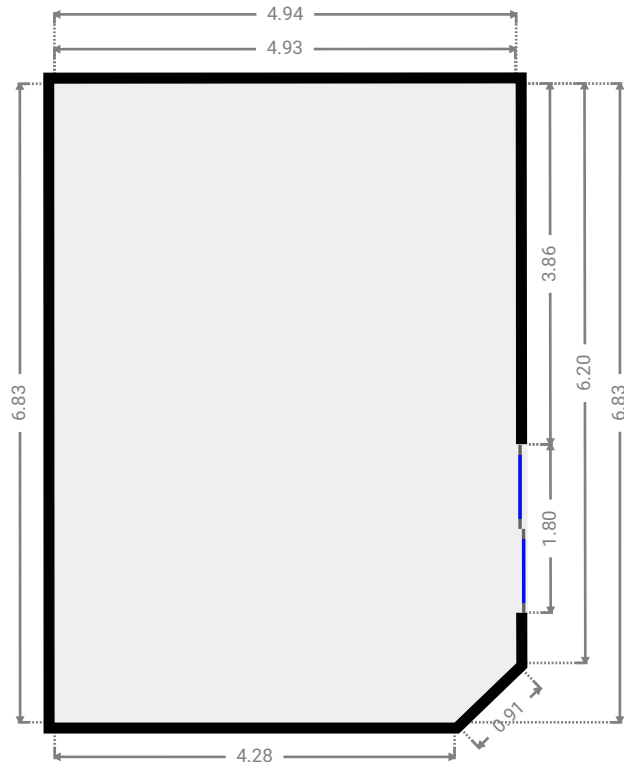
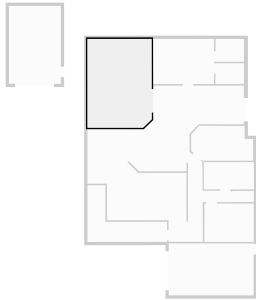
1 OPENING

Height
0.00 m



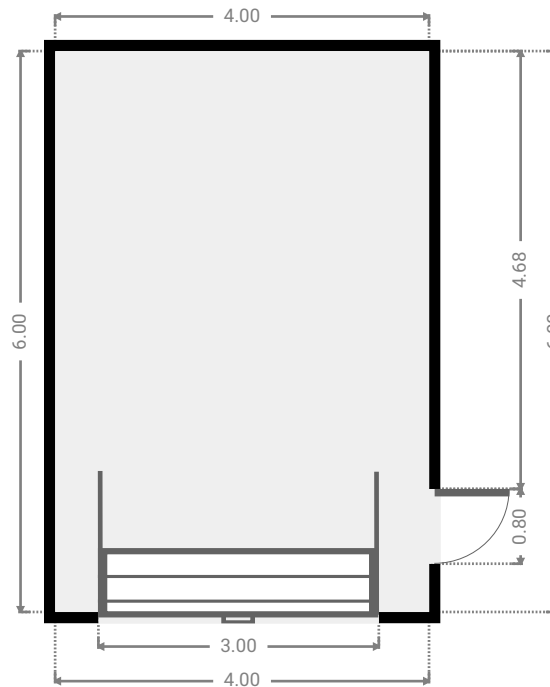
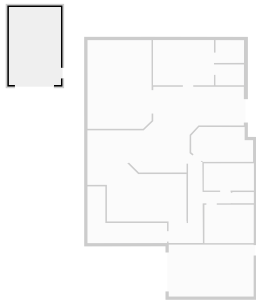
▼ Other
Ground Floor

WIDTH: 4.94 m • LENGTH: 6.83 m
AREA: 33.50 m² • PERIMETER: 23.15 m



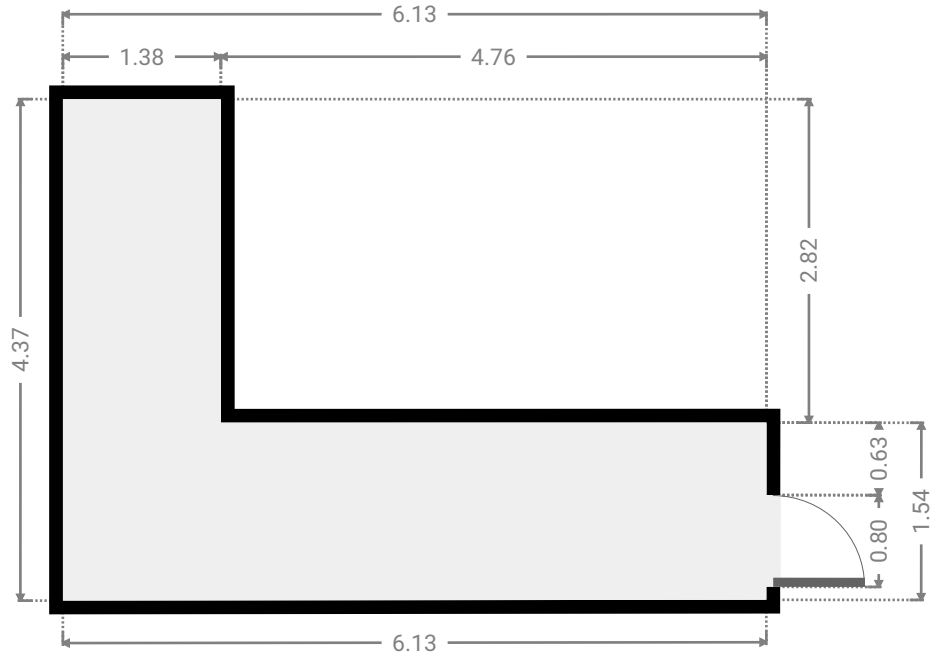
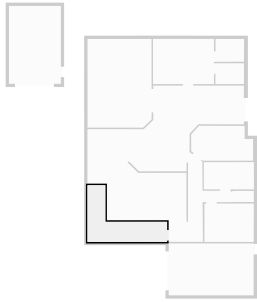
▼ Other
Ground Floor

WIDTH: 4.00 m • LENGTH: 6.00 m
AREA: 24.00 m² • PERIMETER: 20.00 m



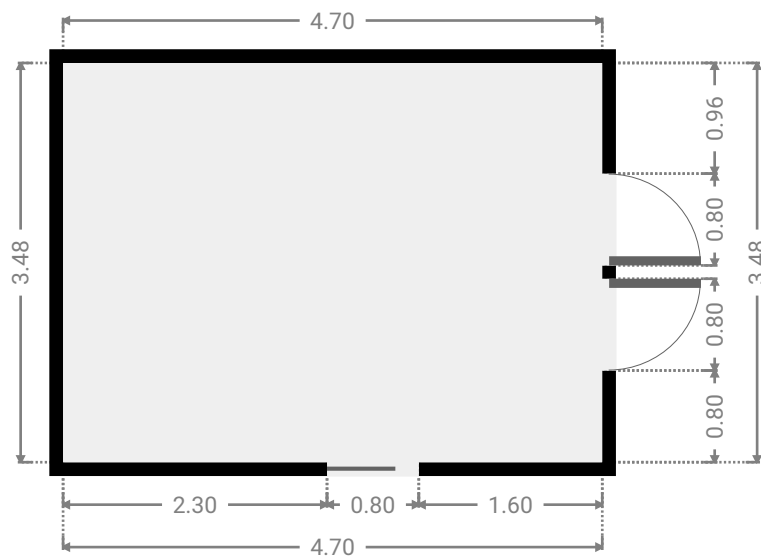
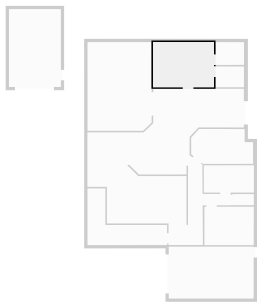
▼ **Other**
Ground Floor

WIDTH: 6.13 m • LENGTH: 4.37 m
AREA: 13.38 m² • PERIMETER: 21.00 m



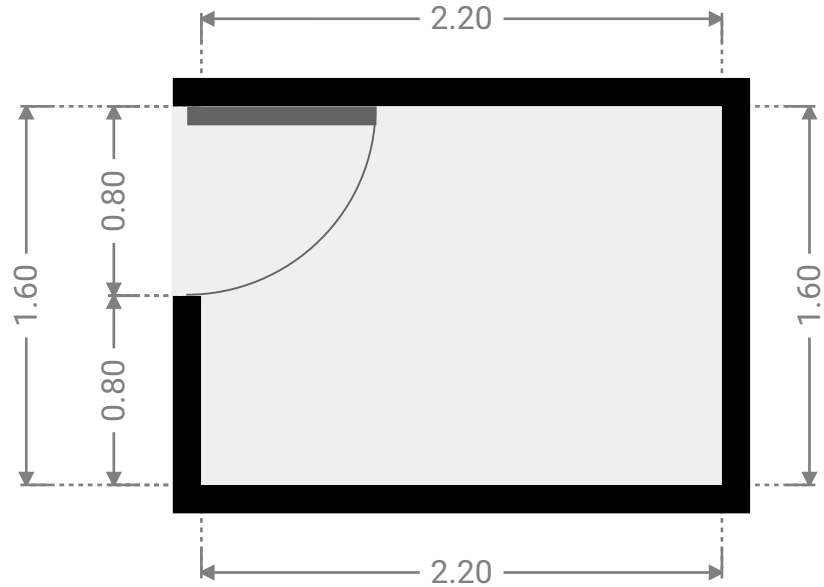
▼ **Primary Bedroom**
Ground Floor

WIDTH: 4.70 m • LENGTH: 3.48 m
AREA: 16.36 m² • PERIMETER: 16.36 m



▼ **Closet**
Ground Floor

WIDTH: 2.20 m • LENGTH: 1.60 m
AREA: 3.52 m² • PERIMETER: 7.60 m



▼ **Toilet**
Ground Floor

WIDTH: 1.65 m • LENGTH: 0.86 m
AREA: 1.42 m² • PERIMETER: 5.03 m

