

# 5 Athlone Court

**SUBMITTED BY**  
Ray White Rockhampton Casey  
stockers@cqoz.com

---

**CREATED ON**  
2022-03-09

---

**Floors**  
1

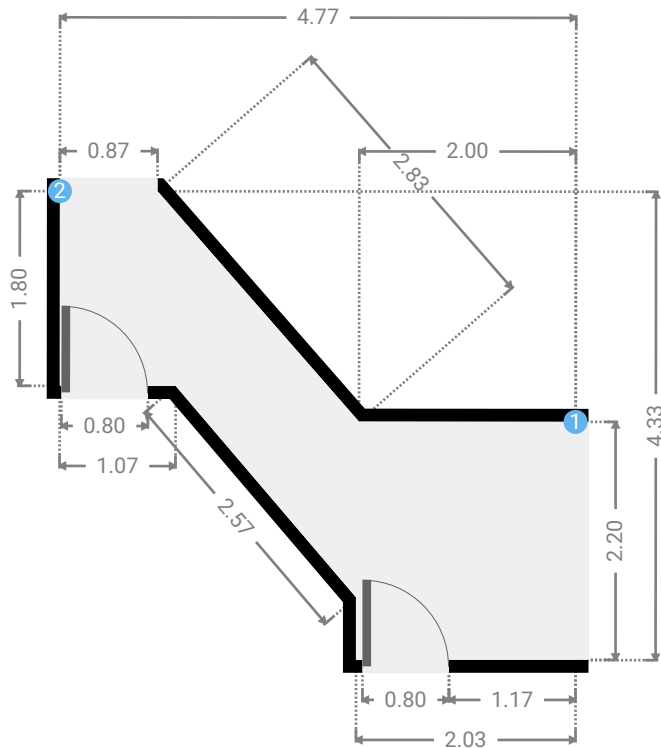
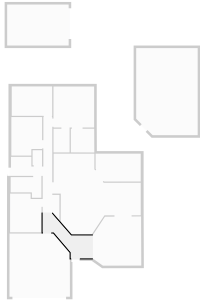
---

## ▼ Ground Floor



## ▼ Living Room Ground Floor

WIDTH: 4.77 m • LENGTH: 4.33 m  
AREA: 9.10 m<sup>2</sup> • PERIMETER: 15.98 m



## ▼ Living Room/Ground Floor

### 1 OPENING

Height  
0.00 m



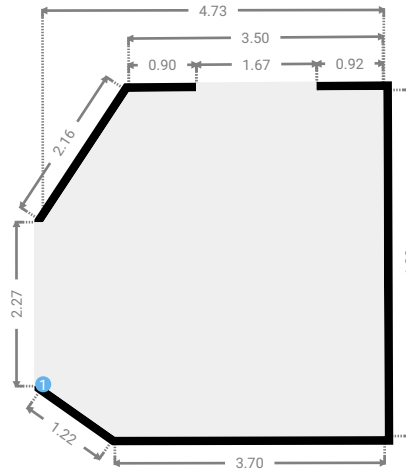
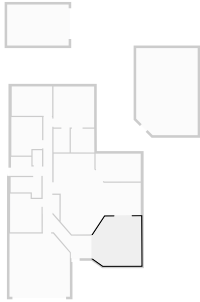
### 2 OPENING

Height  
0.00 m



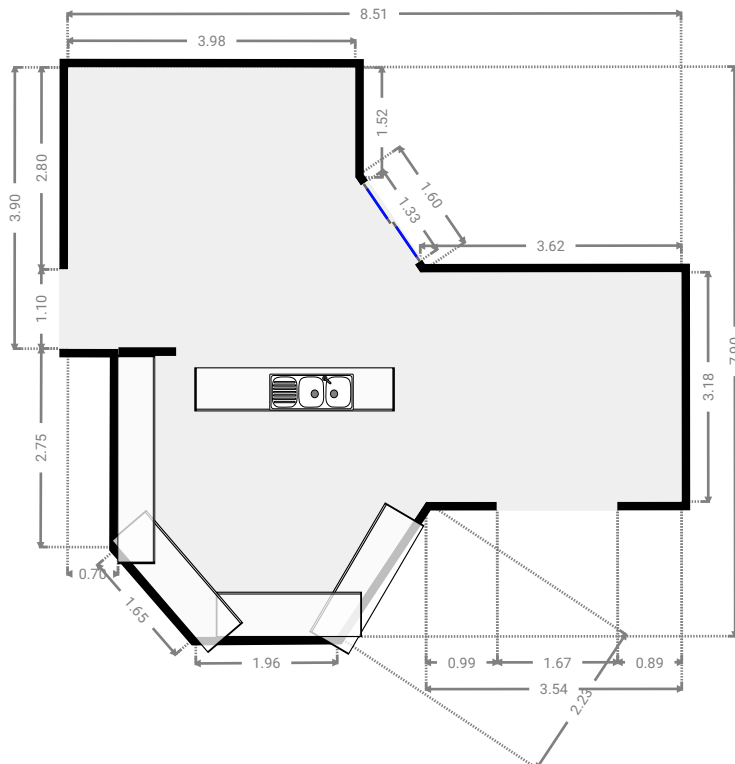
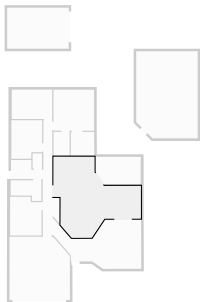
## ▼ Living Room Ground Floor

WIDTH: 4.73 m • LENGTH: 4.80 m  
AREA: 21.20 m<sup>2</sup> • PERIMETER: 17.72 m



## ▼ Kitchen Ground Floor

WIDTH: 8.51 m • LENGTH: 7.90 m  
AREA: 43.64 m<sup>2</sup> • PERIMETER: 30.63 m



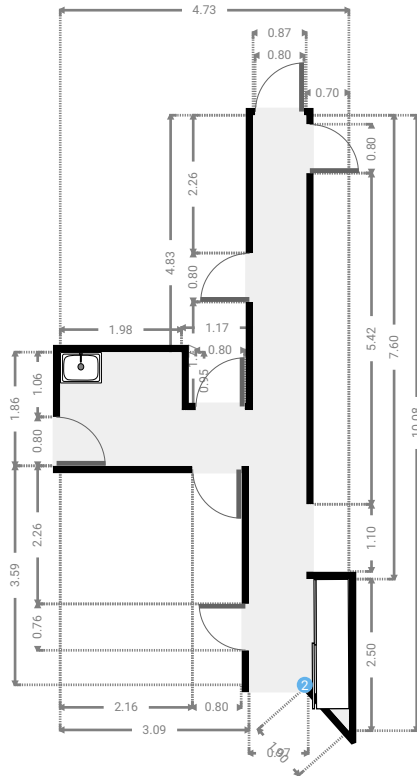
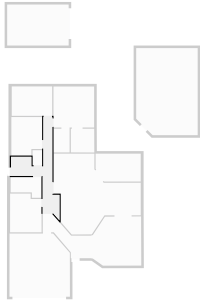
# 5 Athlone Court

FLOORS: 1



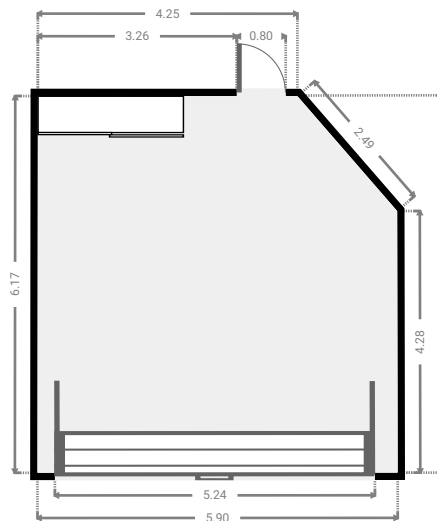
## ▼ Hall Ground Floor

WIDTH: 4.73 m • LENGTH: 10.08 m  
AREA: 14.58 m<sup>2</sup> • PERIMETER: 31.09 m



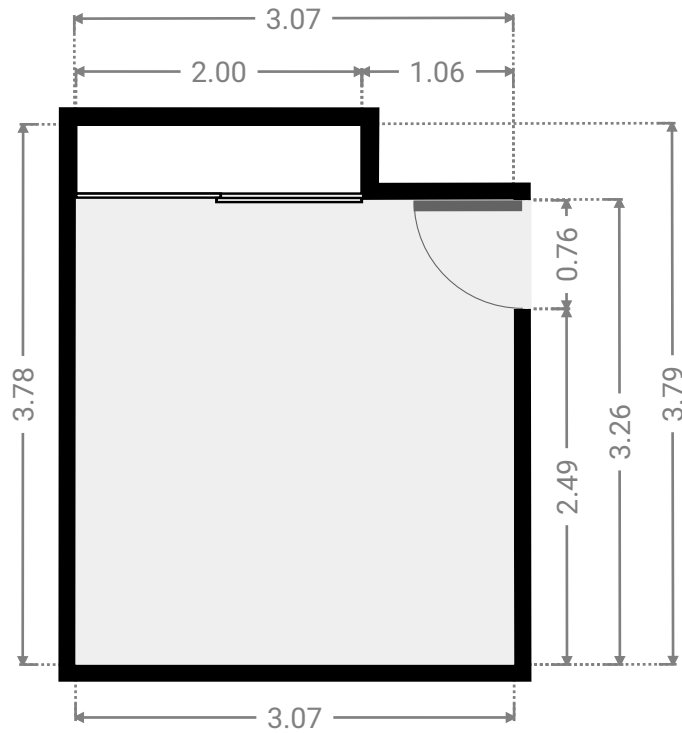
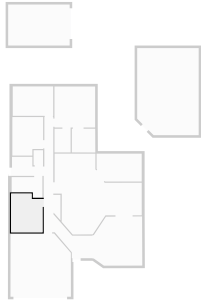
## ▼ Garage Ground Floor

WIDTH: 5.90 m • LENGTH: 6.18 m  
AREA: 34.80 m<sup>2</sup> • PERIMETER: 23.10 m



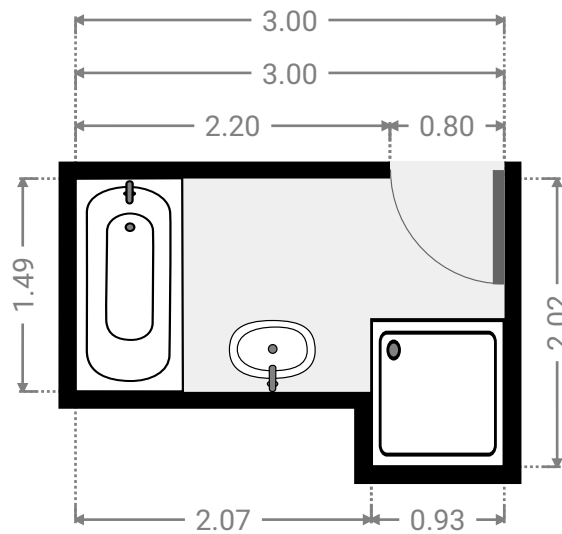
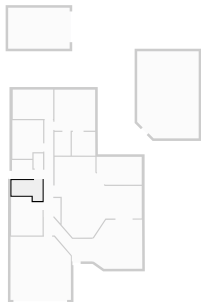
## ▼ Bedroom Ground Floor

WIDTH: 3.07 m • LENGTH: 3.79 m  
AREA: 11.03 m<sup>2</sup> • PERIMETER: 13.70 m



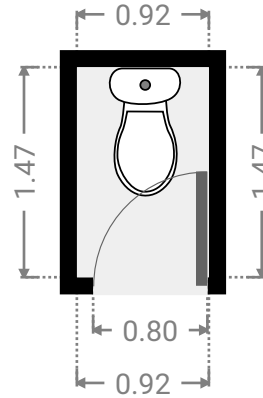
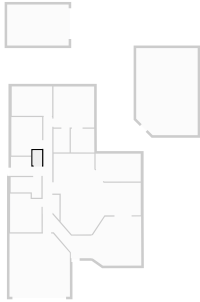
## ▼ Bathroom Ground Floor

WIDTH: 3.00 m • LENGTH: 2.02 m  
AREA: 4.96 m<sup>2</sup> • PERIMETER: 10.04 m



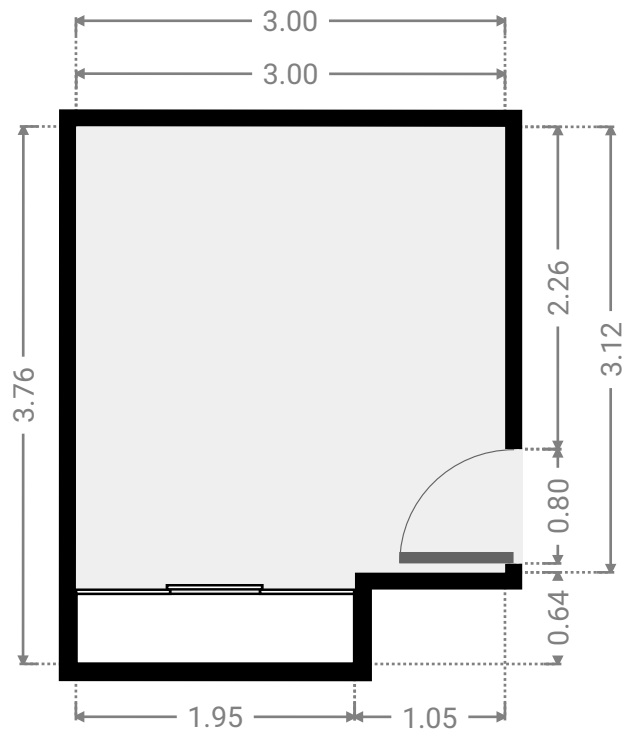
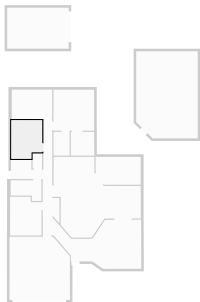
▼ **Toilet**  
Ground Floor

WIDTH: 0.92 m • LENGTH: 1.47 m  
AREA: 1.36 m<sup>2</sup> • PERIMETER: 4.79 m



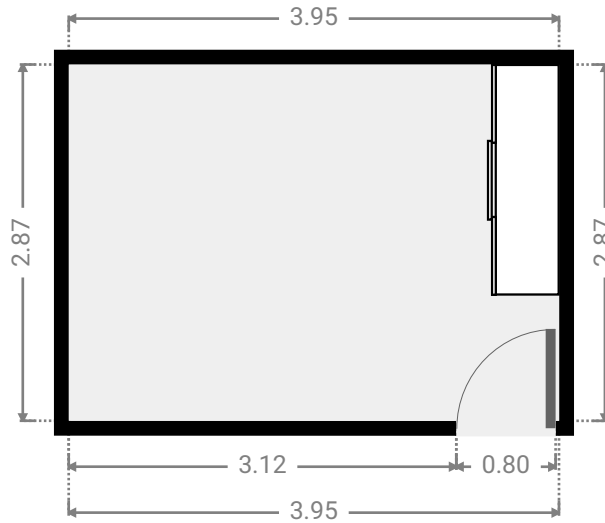
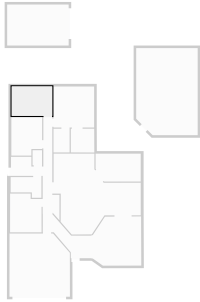
▼ **Bedroom**  
Ground Floor

WIDTH: 3.00 m • LENGTH: 3.76 m  
AREA: 10.62 m<sup>2</sup> • PERIMETER: 13.53 m



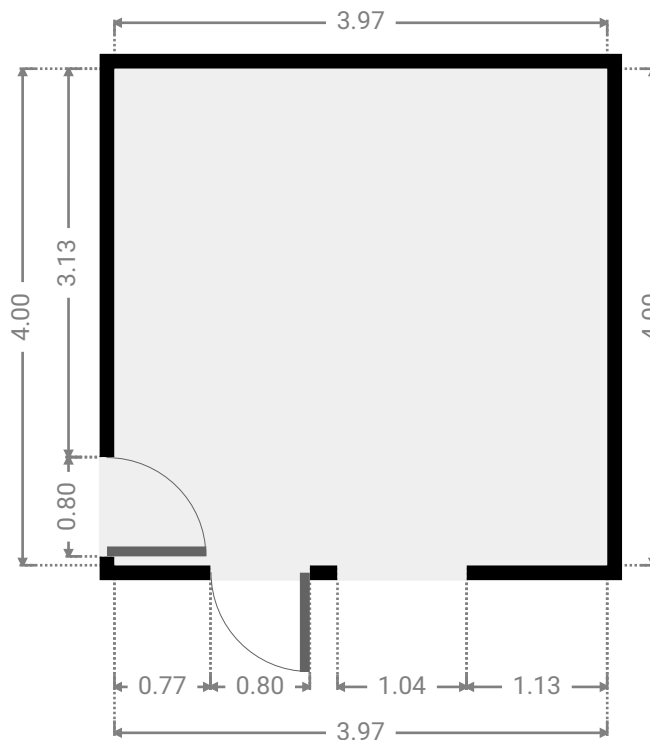
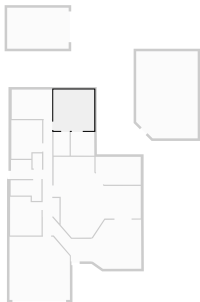
## ▼ Bedroom Ground Floor

WIDTH: 3.95 m • LENGTH: 2.87 m  
AREA: 11.34 m<sup>2</sup> • PERIMETER: 13.64 m



## ▼ Primary Bedroom Ground Floor

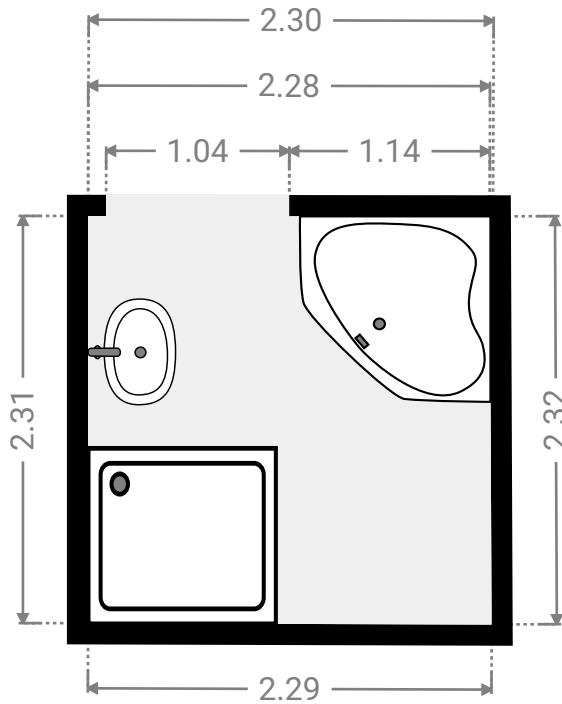
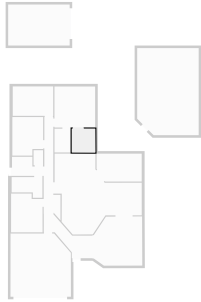
WIDTH: 3.97 m • LENGTH: 4.00 m  
AREA: 15.88 m<sup>2</sup> • PERIMETER: 15.94 m





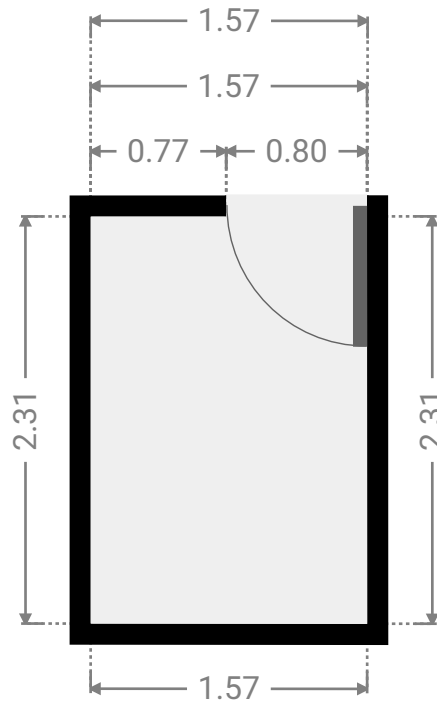
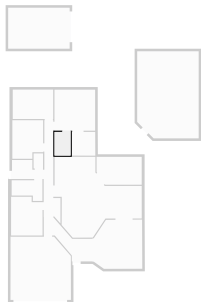
▼ Bathroom  
Ground Floor

WIDTH: 2.30 m • LENGTH: 2.32 m  
AREA: 5.29 m<sup>2</sup> • PERIMETER: 9.20 m



▼ Closet  
Ground Floor

WIDTH: 1.57 m • LENGTH: 2.31 m  
AREA: 3.63 m<sup>2</sup> • PERIMETER: 7.77 m



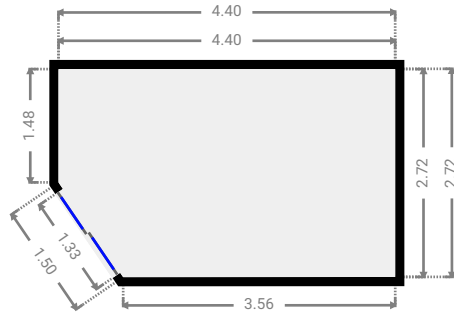
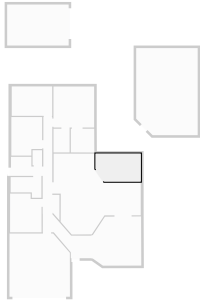
# 5 Athlone Court

FLOORS: 1



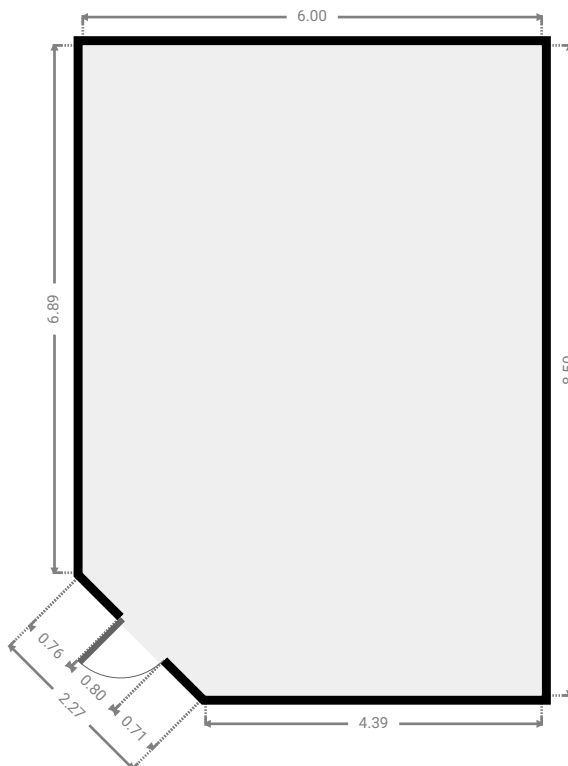
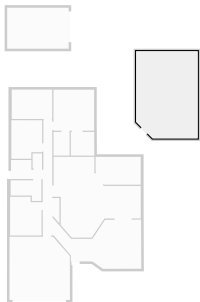
## ▼ Other Ground Floor

WIDTH: 4.40 m • LENGTH: 2.72 m  
AREA: 11.44 m<sup>2</sup> • PERIMETER: 13.66 m



## ▼ Other Ground Floor

WIDTH: 6.00 m • LENGTH: 8.50 m  
AREA: 49.71 m<sup>2</sup> • PERIMETER: 28.06 m



▼ Other  
Ground Floor

WIDTH: 6.00 m • LENGTH: 4.00 m  
AREA: 24.00 m<sup>2</sup> • PERIMETER: 20.00 m

