

48 Lilypilly Avenue

SUBMITTED BY

Ray White Rockhampton Casey
stockers@cqoz.com

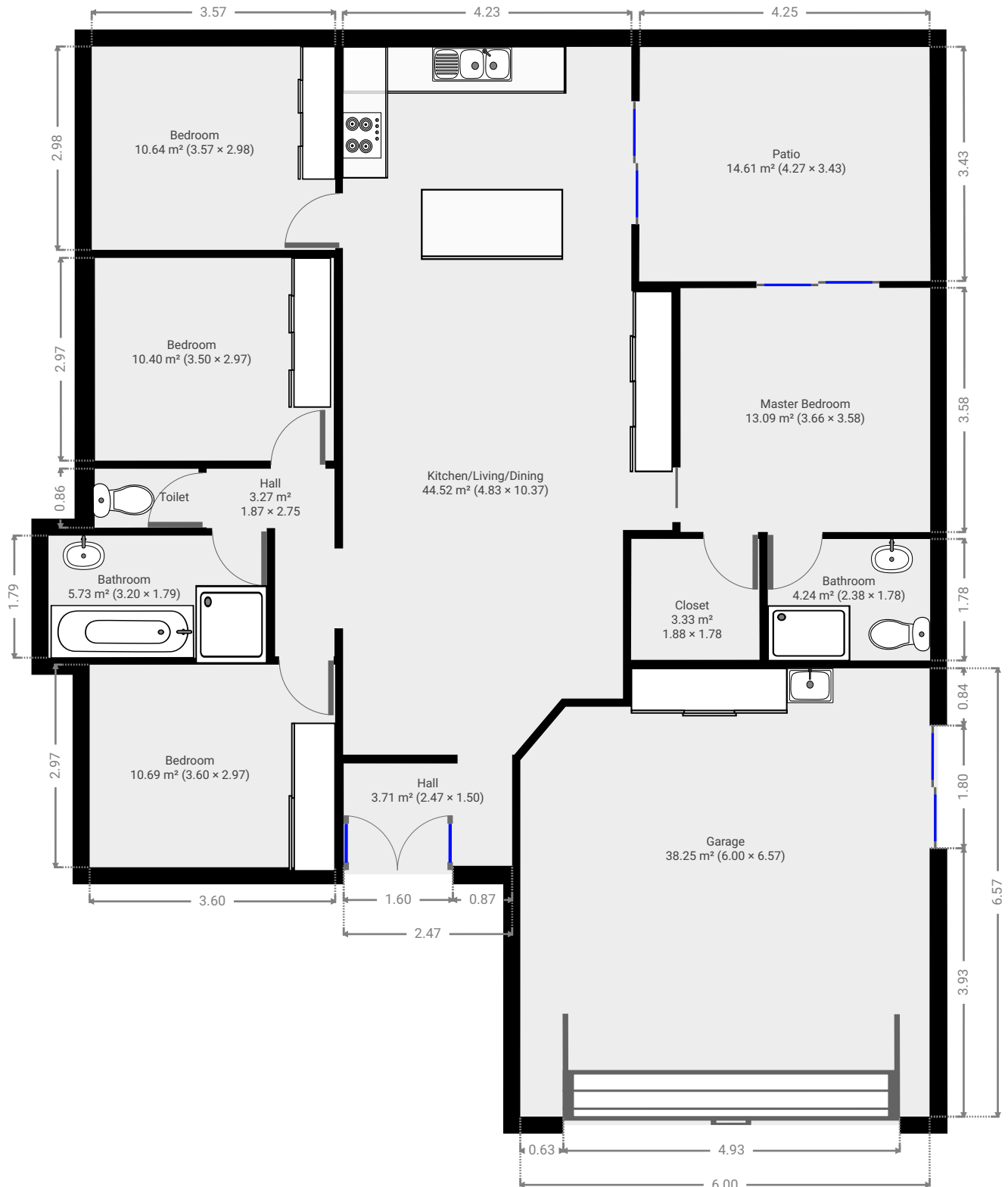
CREATED ON

2021-12-22

Floors

1

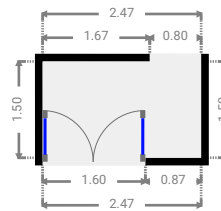
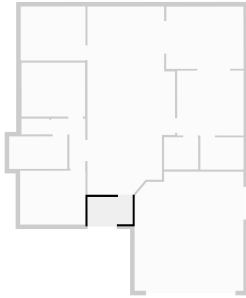
▼ Ground Floor



FLOORS: 1

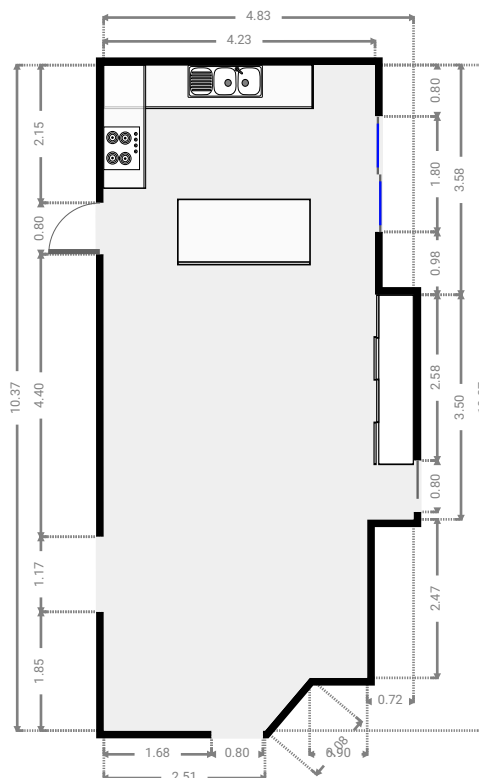
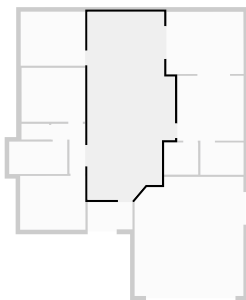
▼ **Hall**
Ground Floor

WIDTH: 2.47 m • LENGTH: 1.50 m
AREA: 3.71 m² • PERIMETER: 7.94 m



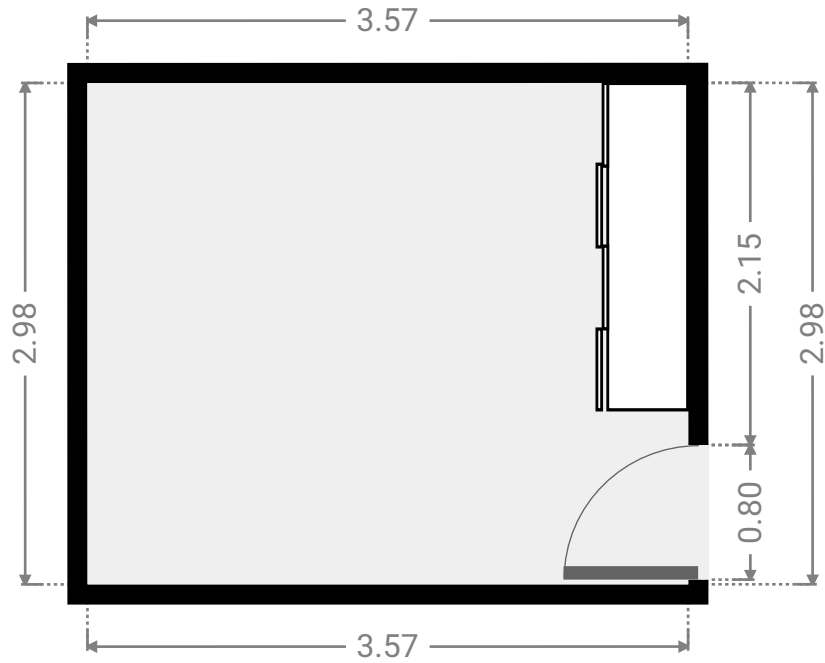
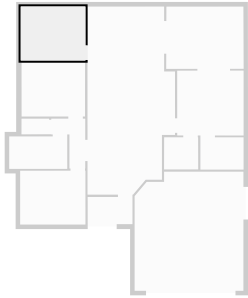
▼ **Kitchen/Living/Dining**
Ground Floor

WIDTH: 4.83 m • LENGTH: 10.37 m
AREA: 44.52 m² • PERIMETER: 29.96 m



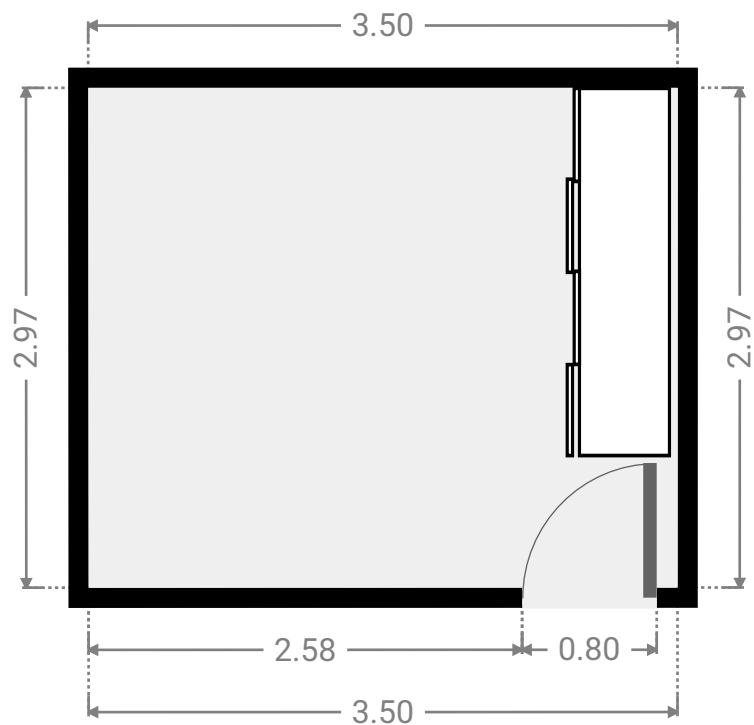
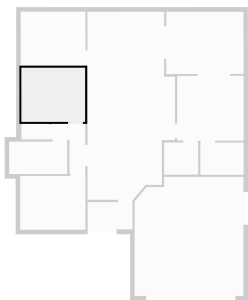
▼ **Bedroom**
Ground Floor

WIDTH: 3.57 m • LENGTH: 2.98 m
AREA: 10.64 m² • PERIMETER: 13.10 m



▼ **Bedroom**
Ground Floor

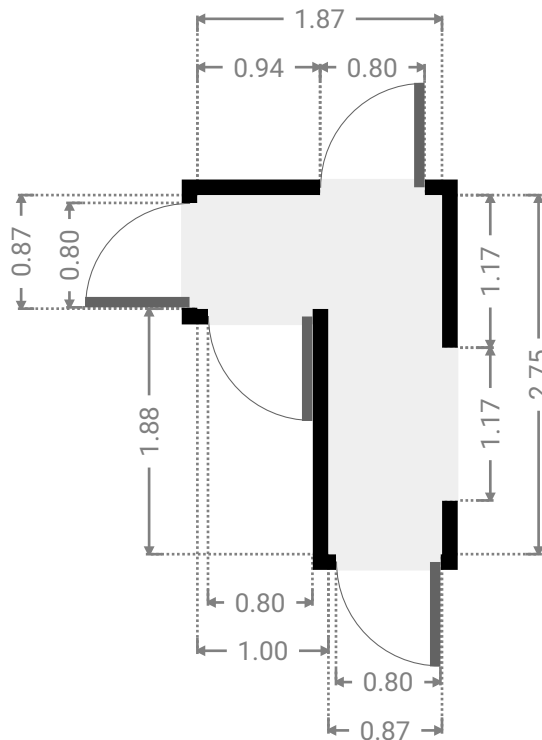
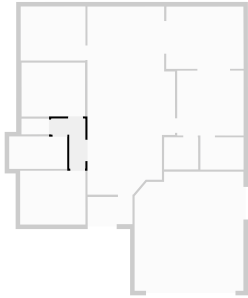
WIDTH: 3.50 m • LENGTH: 2.97 m
AREA: 10.40 m² • PERIMETER: 12.94 m



FLOORS: 1

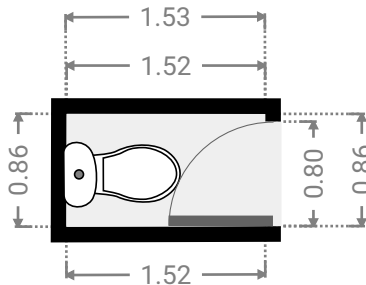
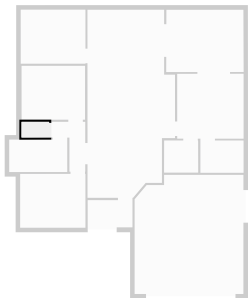
▼ **Hall**
Ground Floor

WIDTH: 1.87 m • LENGTH: 2.75 m
AREA: 3.27 m² • PERIMETER: 9.25 m



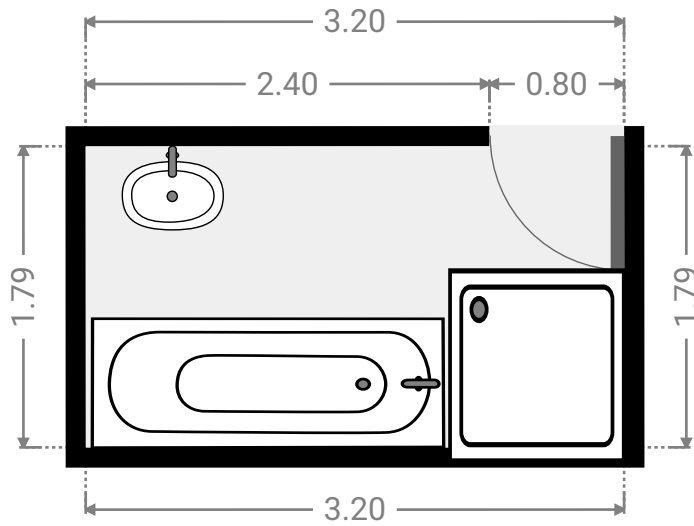
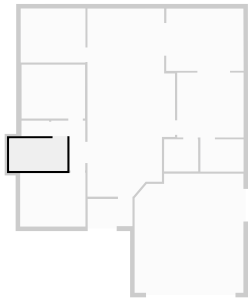
▼ **Toilet**
Ground Floor

WIDTH: 1.53 m • LENGTH: 0.86 m
AREA: 1.31 m² • PERIMETER: 4.77 m



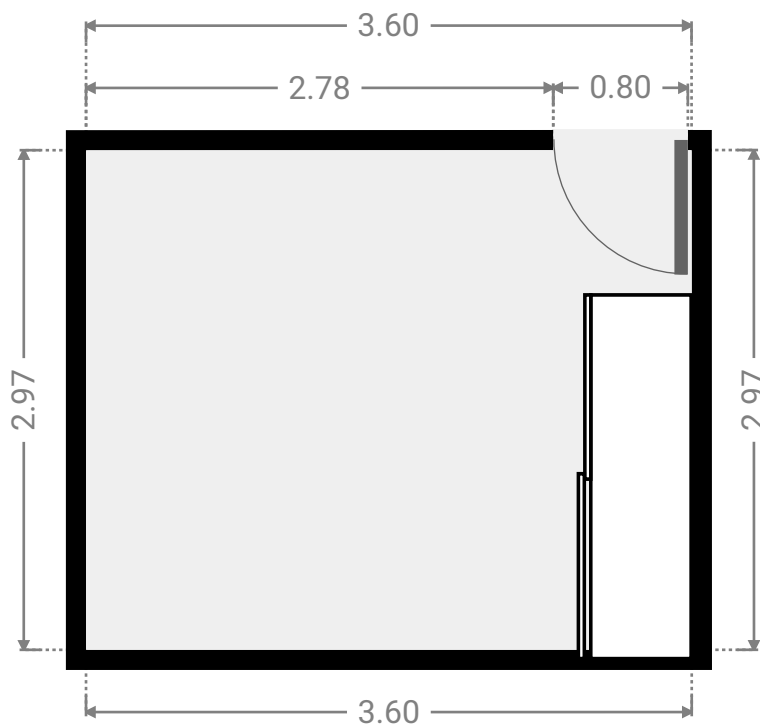
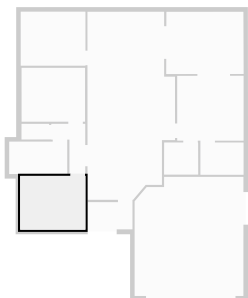
▼ **Bathroom**
Ground Floor

WIDTH: 3.20 m • LENGTH: 1.79 m
AREA: 5.73 m² • PERIMETER: 9.98 m



▼ **Bedroom**
Ground Floor

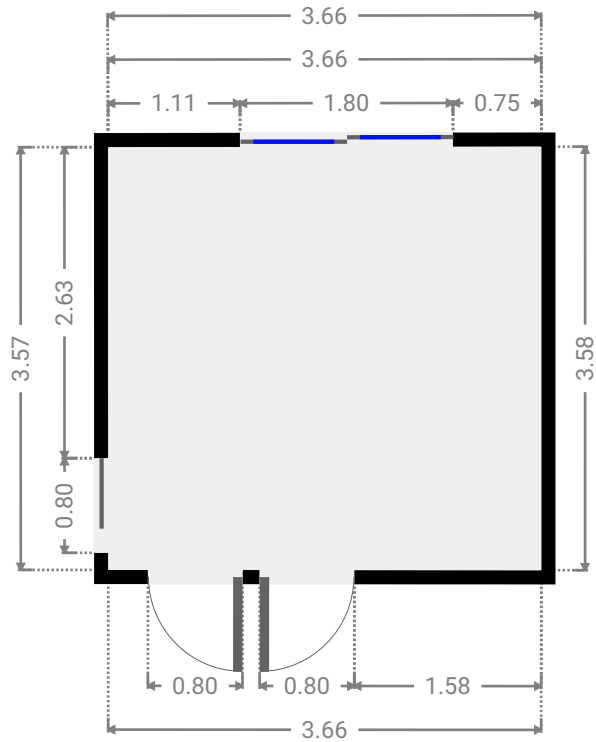
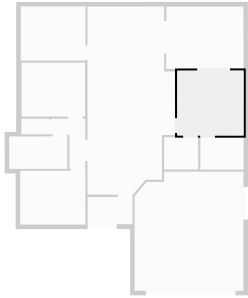
WIDTH: 3.60 m • LENGTH: 2.97 m
AREA: 10.69 m² • PERIMETER: 13.14 m



FLOORS: 1

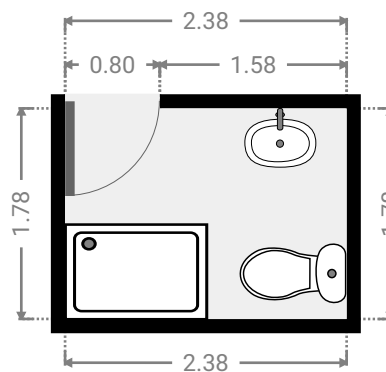
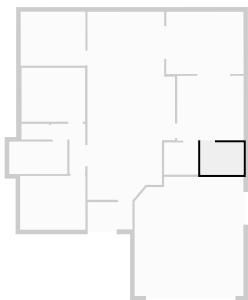
▼ **Master Bedroom**
Ground Floor

WIDTH: 3.66 m • LENGTH: 3.58 m
AREA: 13.09 m² • PERIMETER: 14.47 m



▼ **Bathroom**
Ground Floor

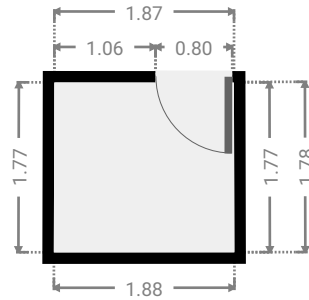
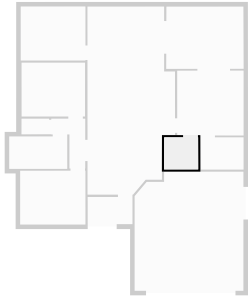
WIDTH: 2.38 m • LENGTH: 1.78 m
AREA: 4.24 m² • PERIMETER: 8.32 m



FLOORS: 1

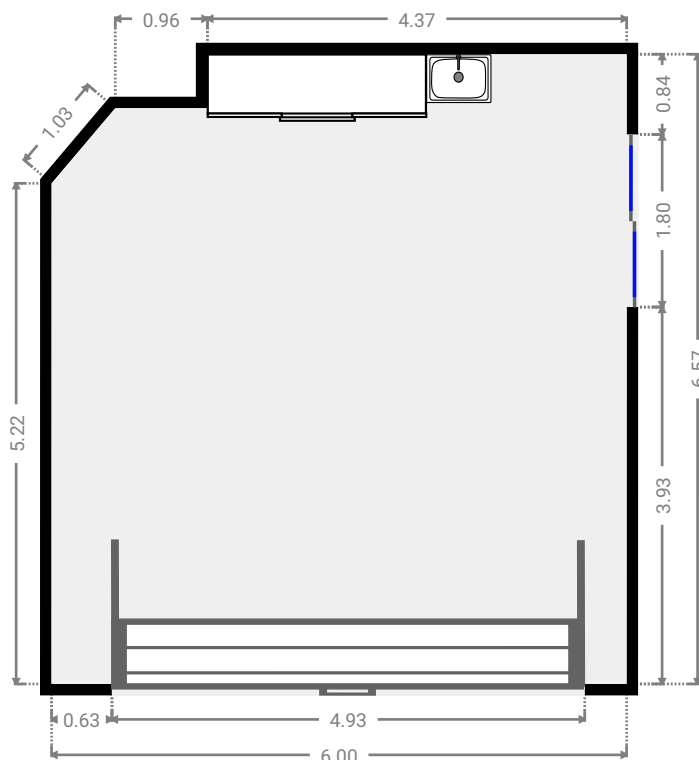
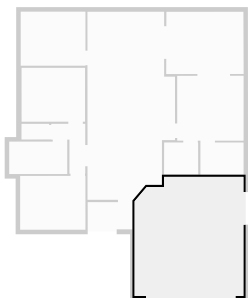
▼ **Closet**
Ground Floor

WIDTH: 1.88 m • LENGTH: 1.78 m
AREA: 3.33 m² • PERIMETER: 7.30 m



▼ **Garage**
Ground Floor

WIDTH: 6.00 m • LENGTH: 6.57 m
AREA: 38.25 m² • PERIMETER: 24.72 m



FLOORS: 1

▼ **Patio**
Ground Floor

WIDTH: 4.27 m • LENGTH: 3.43 m
AREA: 14.61 m² • PERIMETER: 15.38 m

