

47 Meade Street

SUBMITTED BY
Ray White Rockhampton Casey
stockers@cqoz.com

CREATED ON
2022-08-31

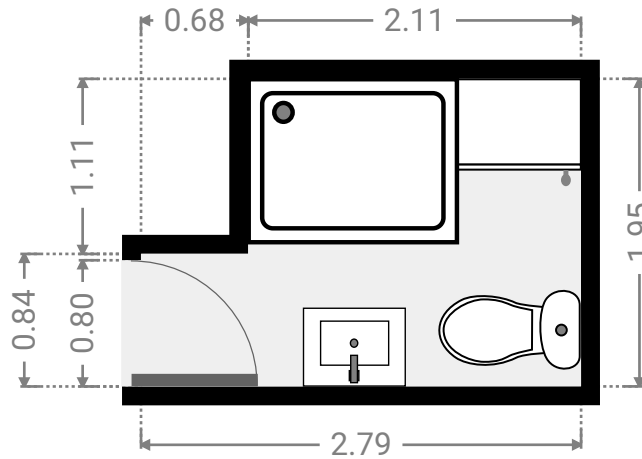
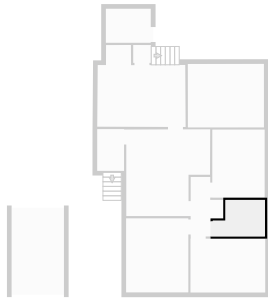
Floors 1

▼ Ground Floor



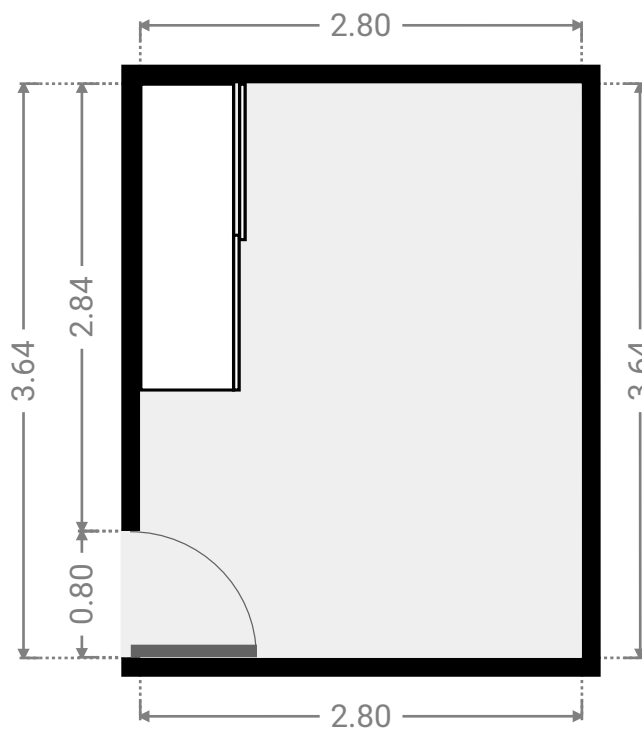
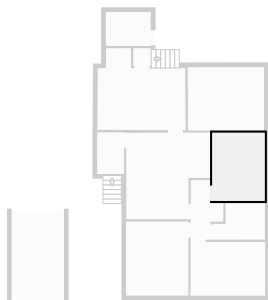
▼ **Bathroom**
Ground Floor

WIDTH: 2.79 m • LENGTH: 1.95 m
AREA: 4.69 m² • PERIMETER: 9.48 m



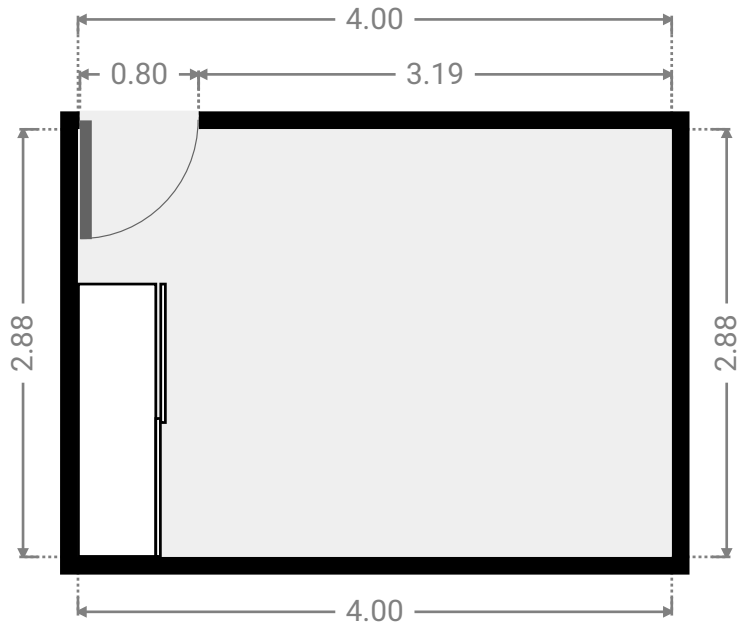
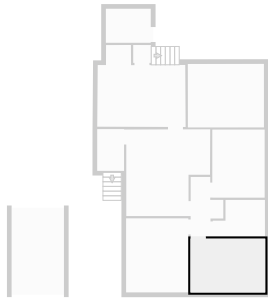
▼ **Bedroom**
Ground Floor

WIDTH: 2.80 m • LENGTH: 3.64 m
AREA: 10.19 m² • PERIMETER: 12.88 m



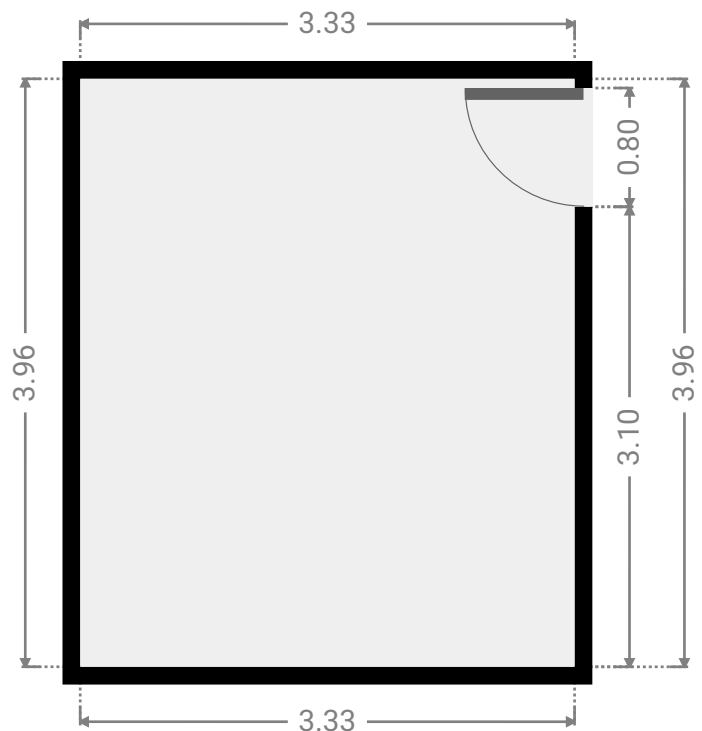
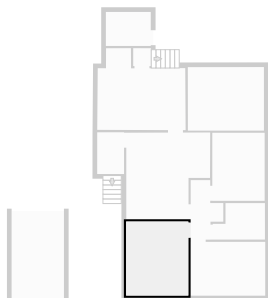
▼ **Bedroom**
Ground Floor

WIDTH: 4.00 m • LENGTH: 2.88 m
AREA: 11.52 m² • PERIMETER: 13.76 m



▼ **Bedroom**
Ground Floor

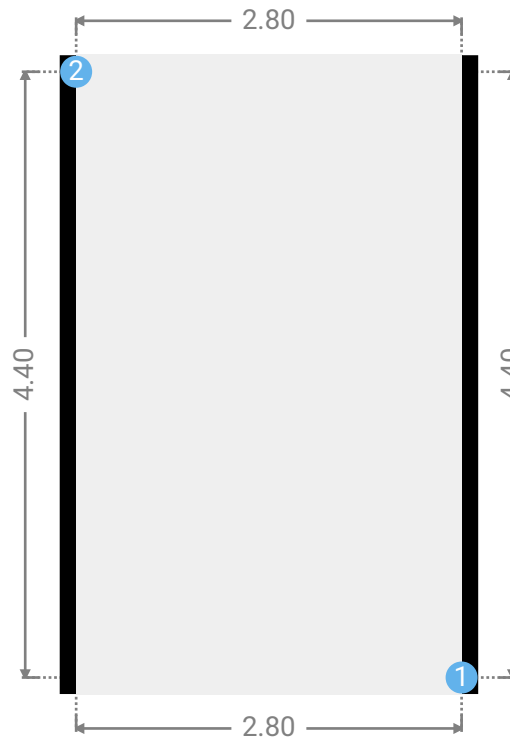
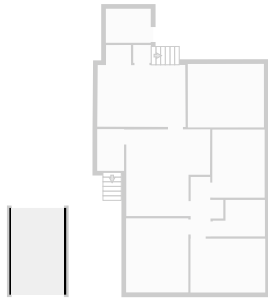
WIDTH: 3.33 m • LENGTH: 3.96 m
AREA: 13.19 m² • PERIMETER: 14.58 m



FLOORS: 1

▼ **Garage**
Ground Floor

WIDTH: 2.80 m • LENGTH: 4.40 m
AREA: 12.32 m² • PERIMETER: 14.40 m



▼ **Garage/**Ground Floor

1 OPENING

Height
0.00 m



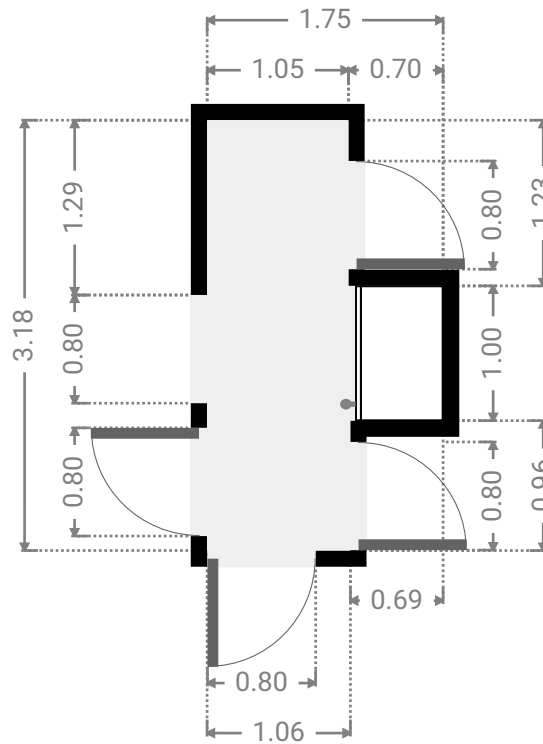
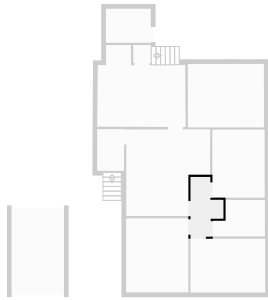
2 OPENING

Height
0.00 m



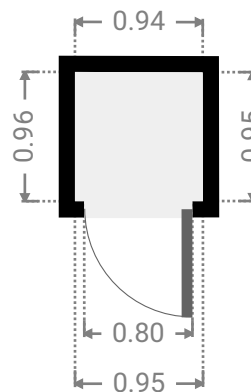
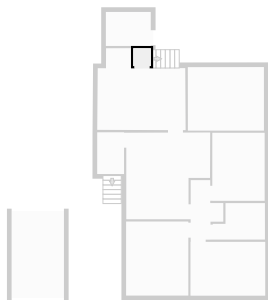
▼ **Hall**
Ground Floor

WIDTH: 1.75 m • LENGTH: 3.18 m
AREA: 4.04 m² • PERIMETER: 9.86 m



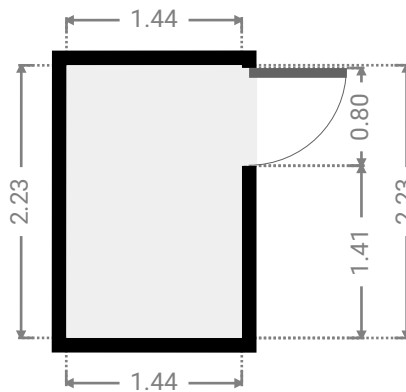
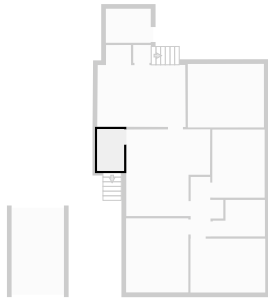
▼ **Hall**
Ground Floor

WIDTH: 0.95 m • LENGTH: 0.96 m
AREA: 0.90 m² • PERIMETER: 3.80 m



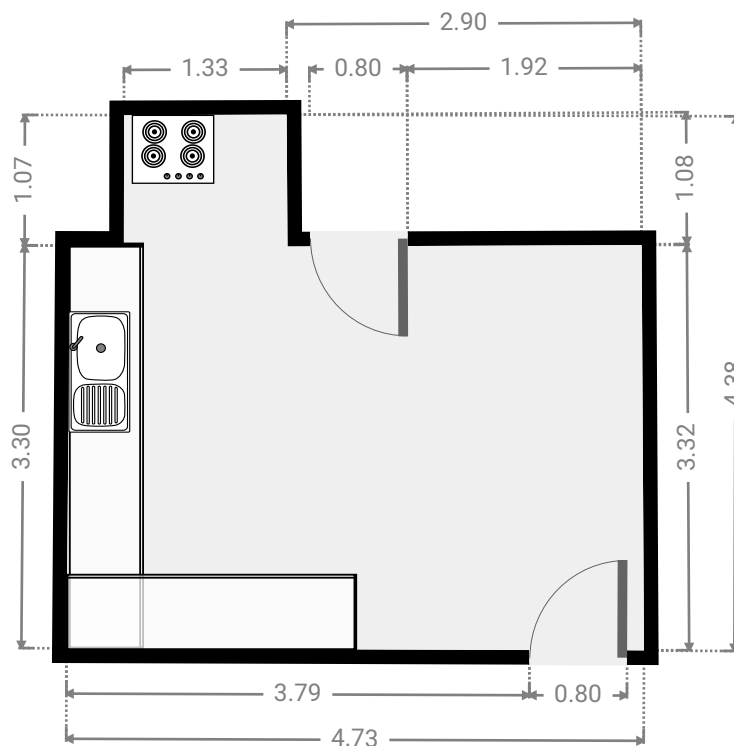
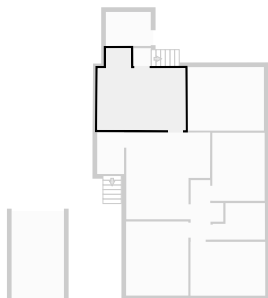
▼ **Hall**
Ground Floor

WIDTH: 1.44 m • LENGTH: 2.23 m
AREA: 3.21 m² • PERIMETER: 7.34 m



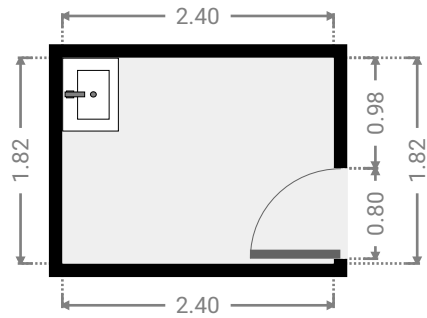
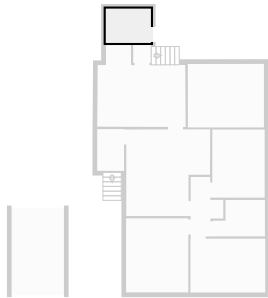
▼ **Kitchen**
Ground Floor

WIDTH: 4.73 m • LENGTH: 4.38 m
AREA: 16.99 m² • PERIMETER: 18.17 m



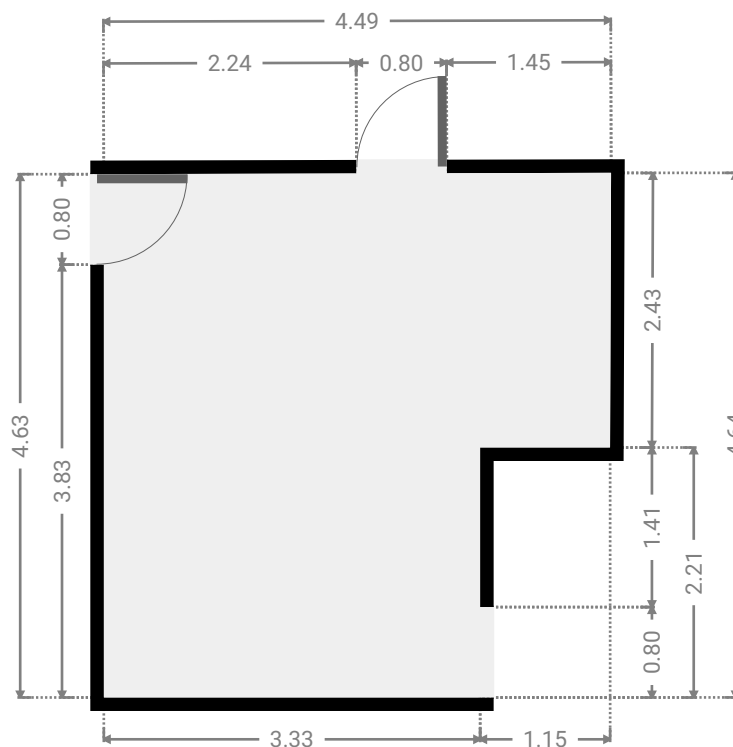
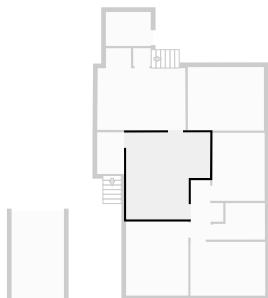
▼ **Laundry Room**
Ground Floor

WIDTH: 2.40 m • LENGTH: 1.82 m
AREA: 4.37 m² • PERIMETER: 8.44 m



▼ **Living Room**
Ground Floor

WIDTH: 4.49 m • LENGTH: 4.64 m
AREA: 18.24 m² • PERIMETER: 18.24 m



▼ Other
Ground Floor

WIDTH: 4.07 m • LENGTH: 3.40 m
AREA: 13.83 m² • PERIMETER: 14.94 m

