

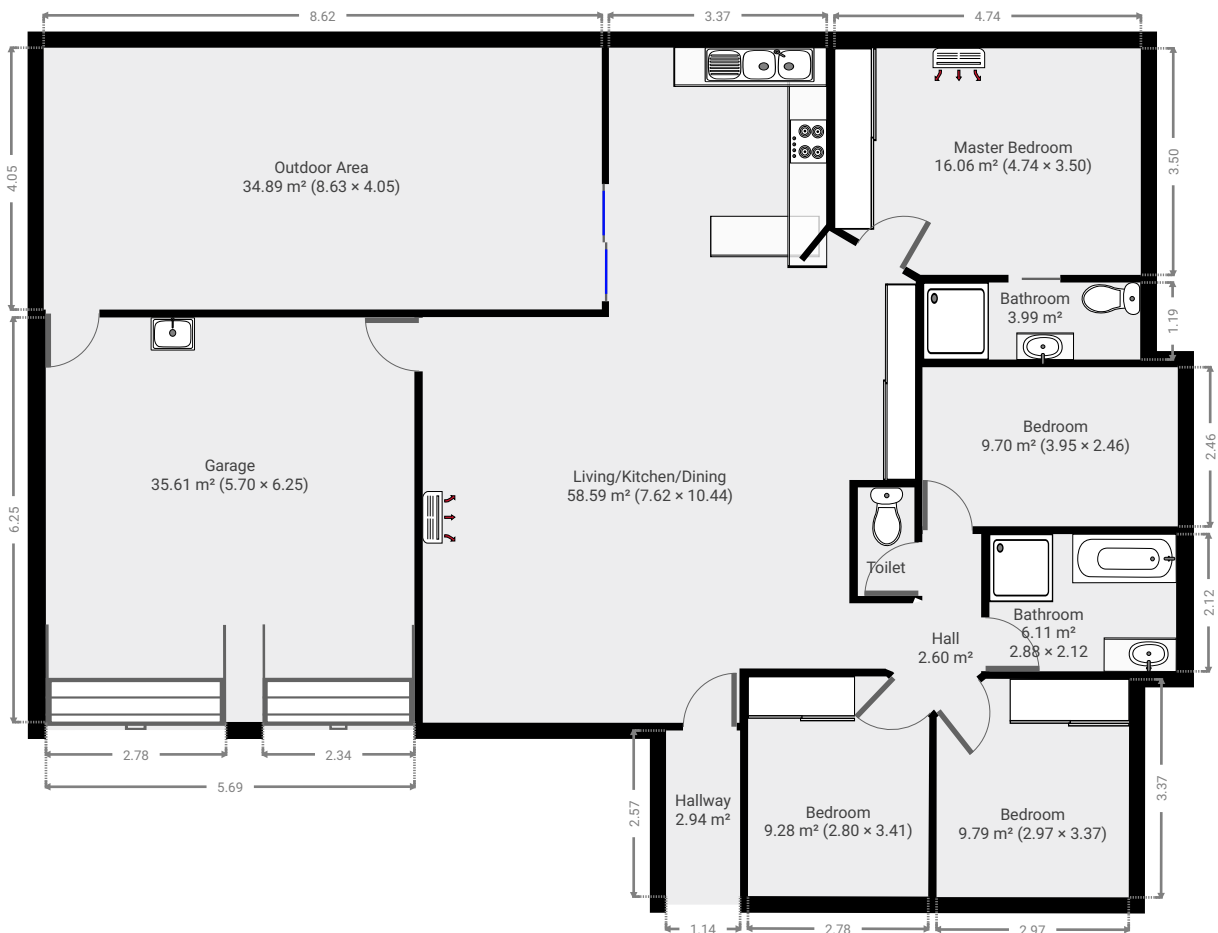
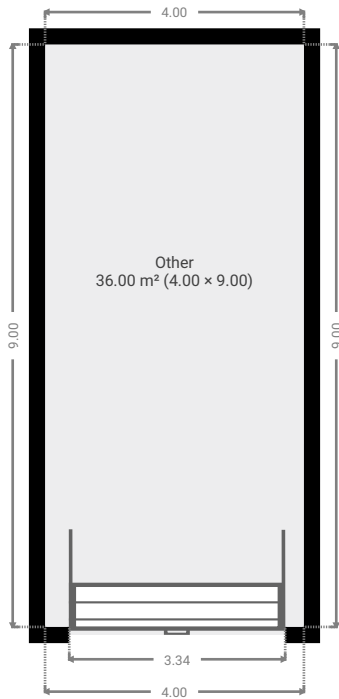
47 Bramble Street

Created on
2019-08-20

Floors
1

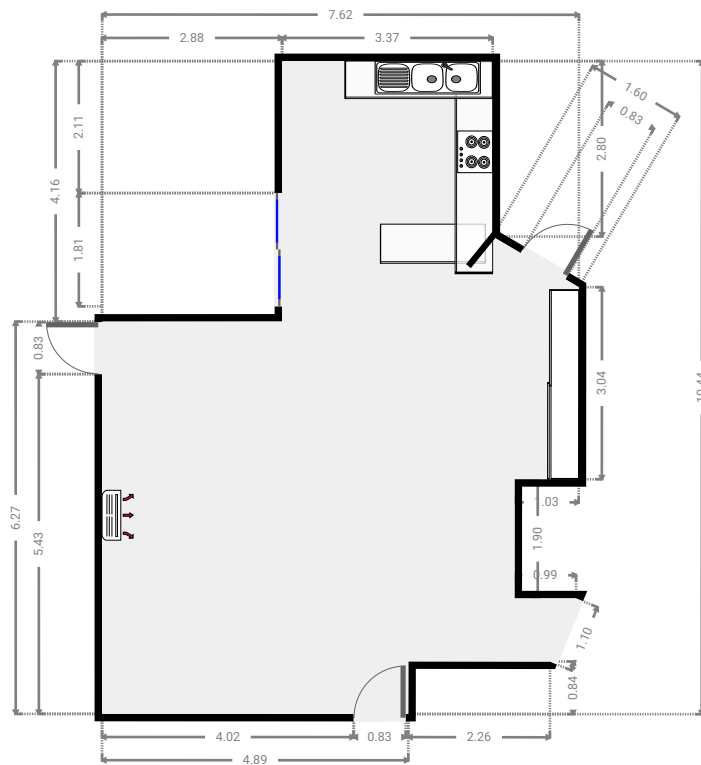
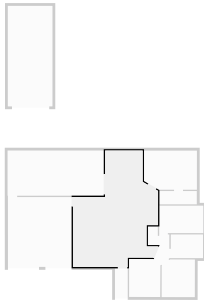


▼ Ground Floor



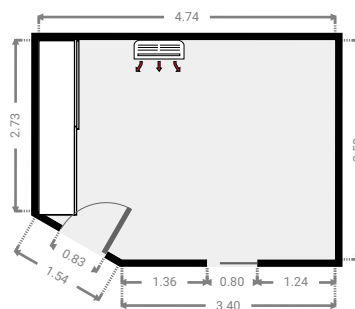
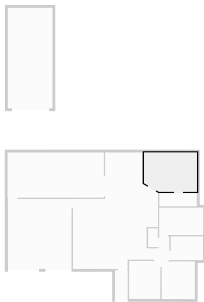
▼ Living/Kitchen/Dining
Ground Floor

WIDTH: 7.62 m • LENGTH: 10.44 m
AREA: 58.59 m² • PERIMETER: 37.15 m



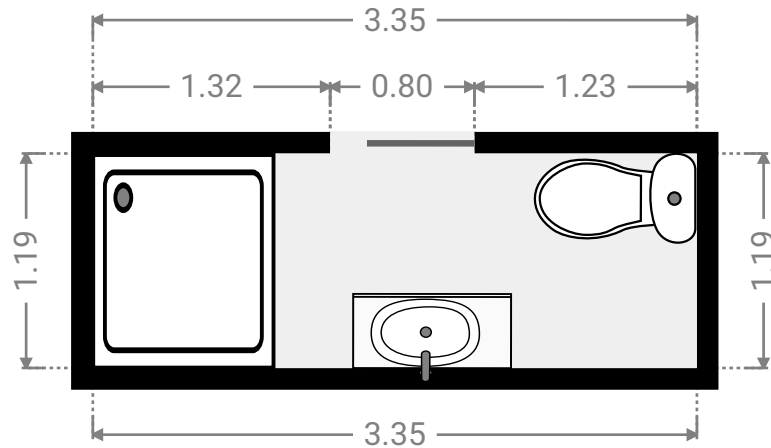
▼ Master Bedroom
Ground Floor

WIDTH: 4.74 m • LENGTH: 3.50 m
AREA: 16.06 m² • PERIMETER: 15.91 m



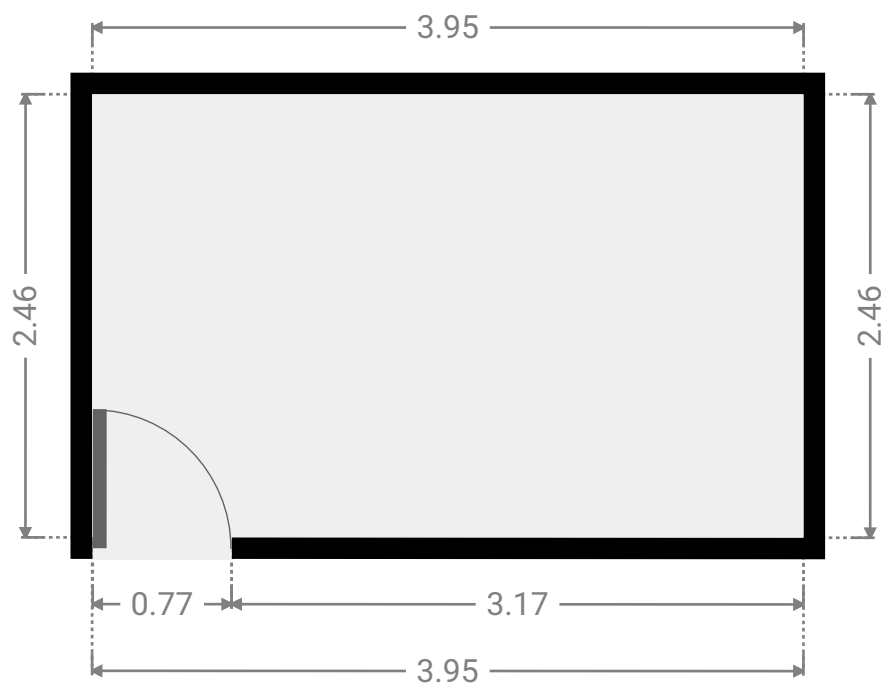
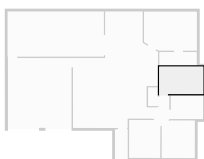
▼ **Bathroom**
Ground Floor

WIDTH: 3.35 m • LENGTH: 1.19 m
AREA: 3.99 m² • PERIMETER: 9.08 m



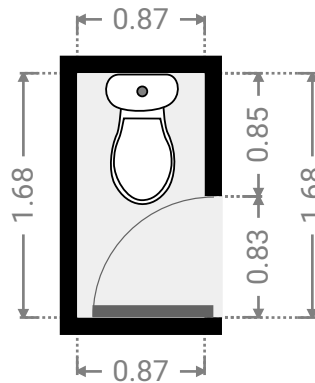
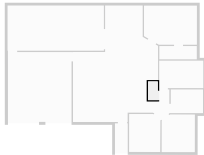
▼ **Bedroom**
Ground Floor

WIDTH: 3.95 m • LENGTH: 2.46 m
AREA: 9.70 m² • PERIMETER: 12.81 m



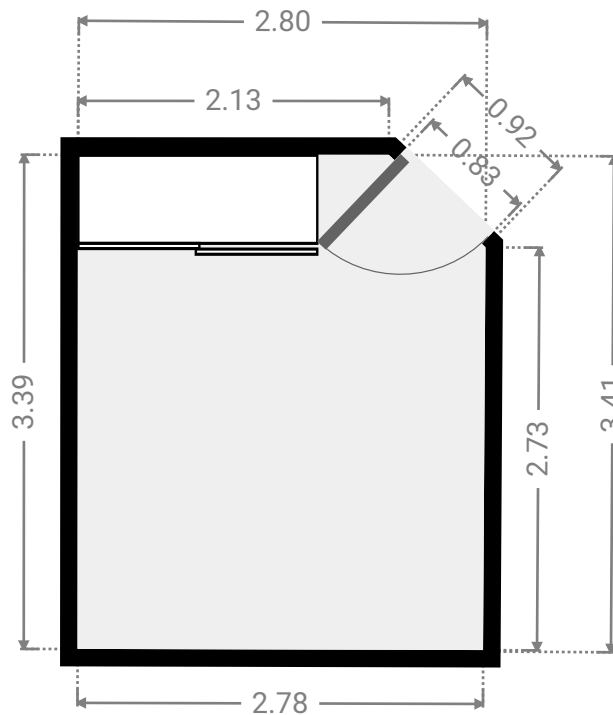
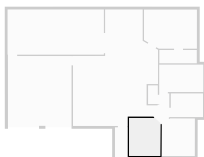
▼ **Toilet**
Ground Floor

WIDTH: 0.87 m • LENGTH: 1.68 m
AREA: 1.47 m² • PERIMETER: 5.10 m



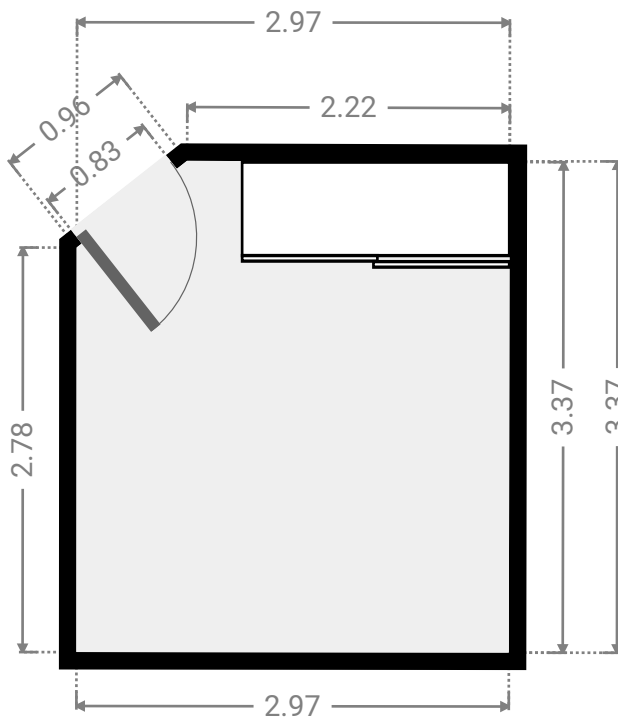
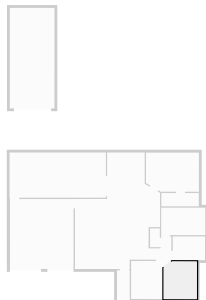
▼ **Bedroom**
Ground Floor

WIDTH: 2.80 m • LENGTH: 3.41 m
AREA: 9.28 m² • PERIMETER: 12.00 m



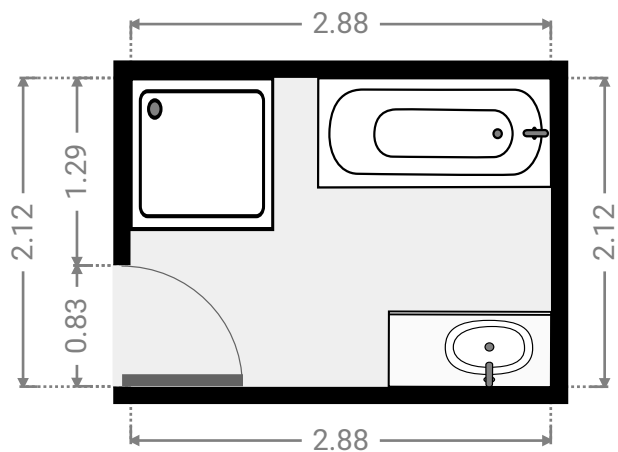
▼ **Bedroom**
Ground Floor

WIDTH: 2.97 m • LENGTH: 3.37 m
AREA: 9.79 m² • PERIMETER: 12.30 m



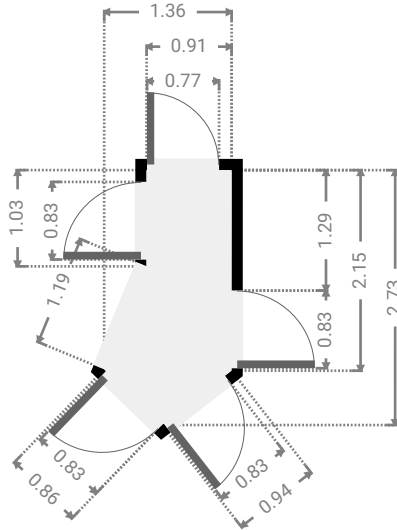
▼ **Bathroom**
Ground Floor

WIDTH: 2.88 m • LENGTH: 2.12 m
AREA: 6.11 m² • PERIMETER: 10.01 m



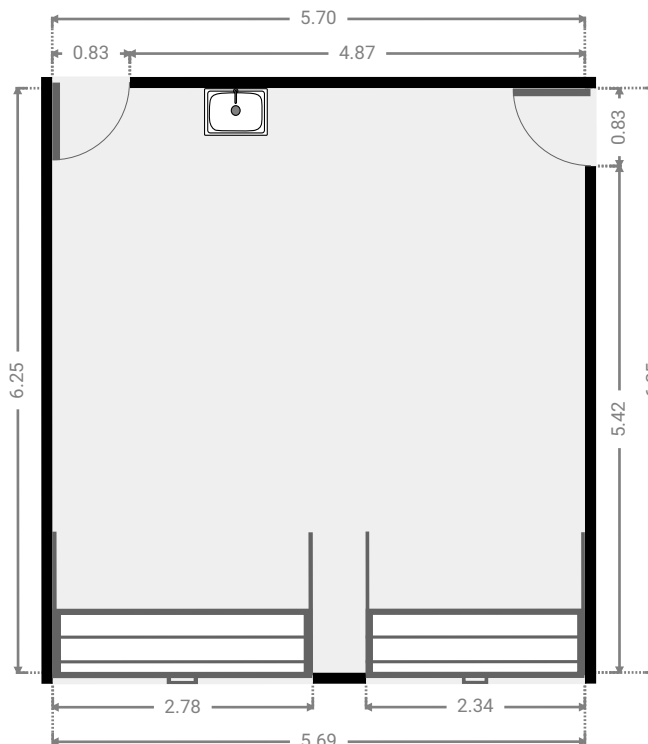
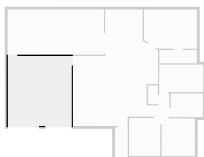
▼ **Hall**
Ground Floor

WIDTH: 1.36 m • LENGTH: 2.73 m
AREA: 2.60 m² • PERIMETER: 7.08 m



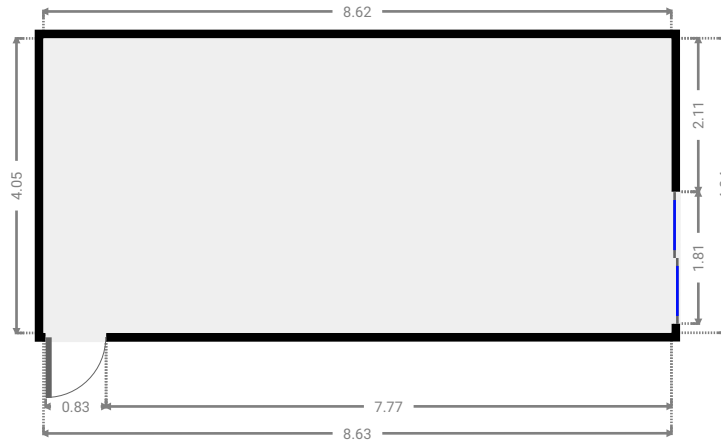
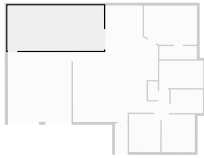
▼ **Garage**
Ground Floor

WIDTH: 5.70 m • LENGTH: 6.25 m
AREA: 35.61 m² • PERIMETER: 23.90 m



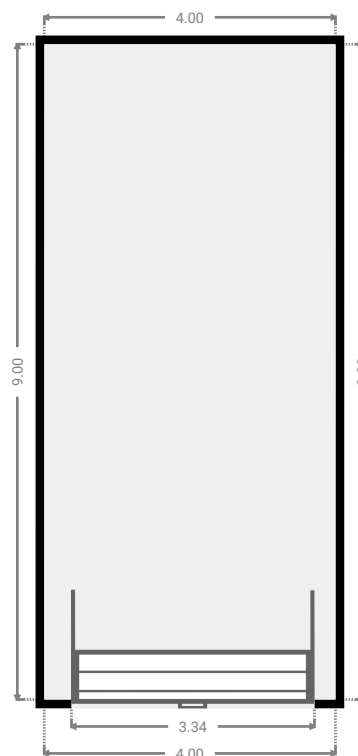
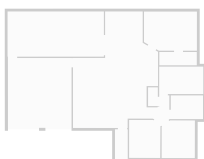
▼ Outdoor Area
Ground Floor

WIDTH: 8.63 m • LENGTH: 4.05 m
AREA: 34.89 m² • PERIMETER: 25.34 m



▼ Other
Ground Floor

WIDTH: 4.00 m • LENGTH: 9.00 m
AREA: 36.00 m² • PERIMETER: 26.00 m



▼ **Hallway**
Ground Floor

WIDTH: 1.14 m • LENGTH: 2.57 m
AREA: 2.94 m² • PERIMETER: 7.42 m

