

Ray White Rockhampton  
 Rockhampton.pm2@raywhite.com  
 (07)4923 0000  
 2016-11-07

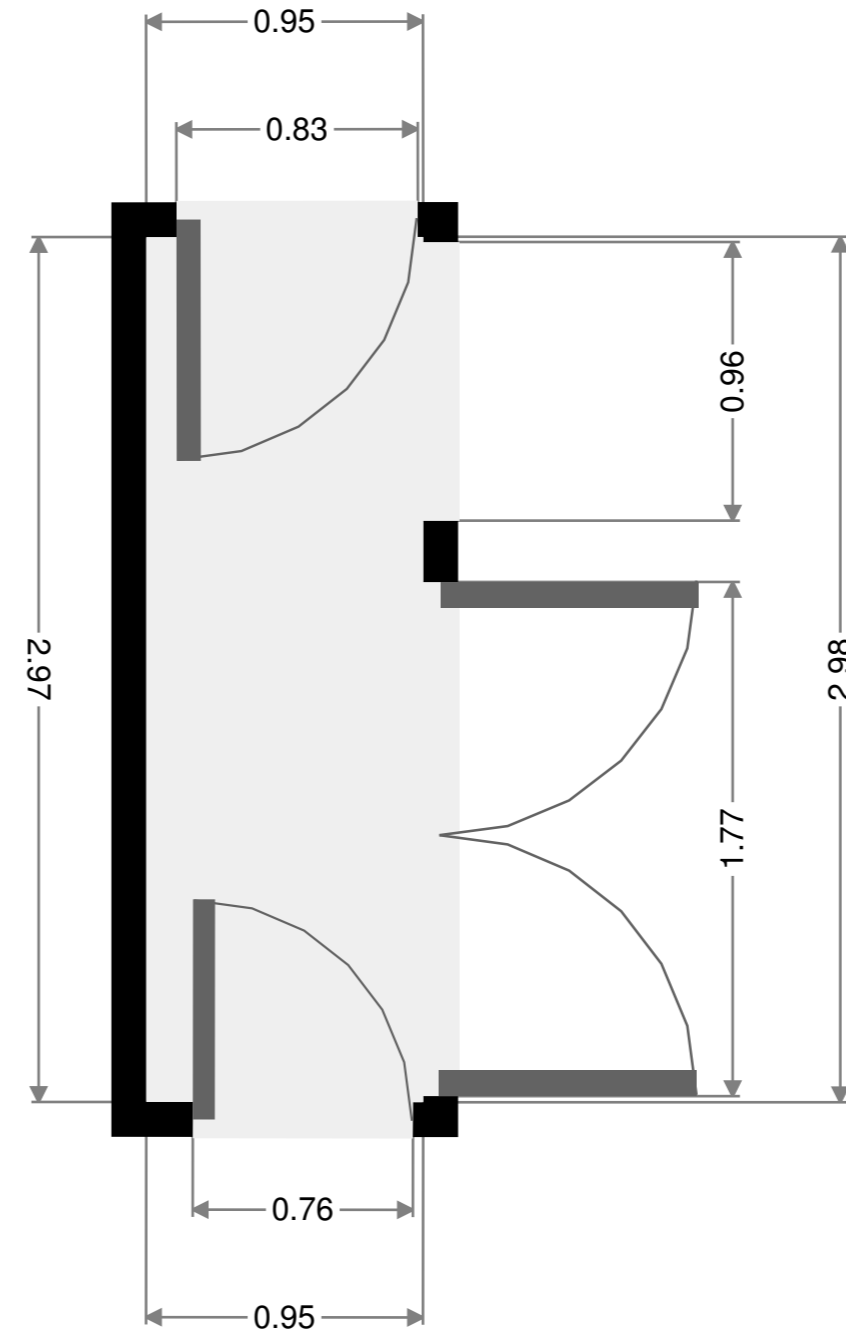
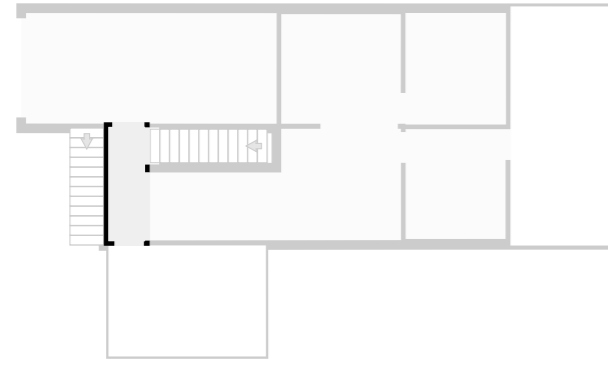
**117** m<sup>2</sup>

**2** Floors

**3** Bedrooms

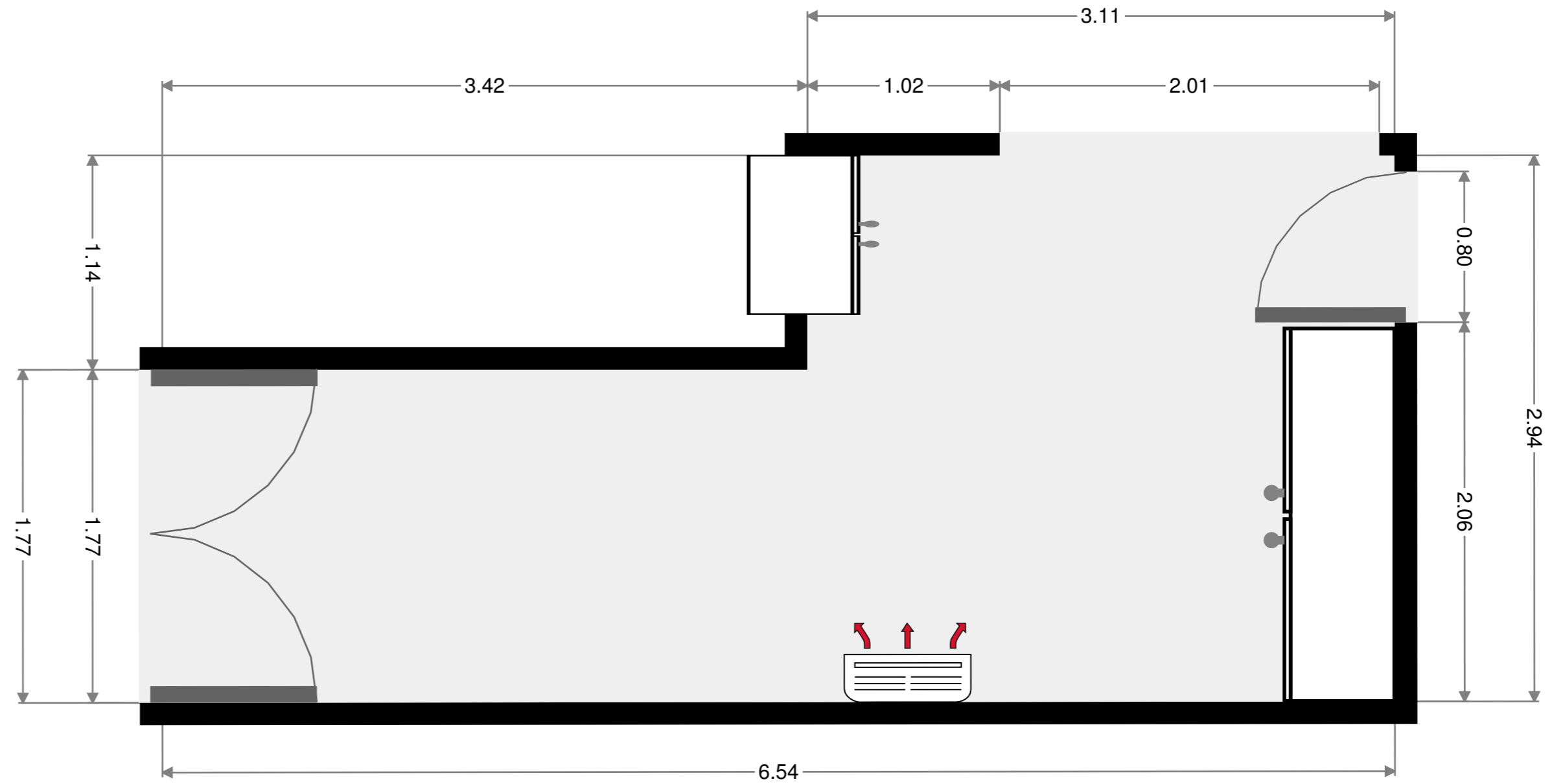
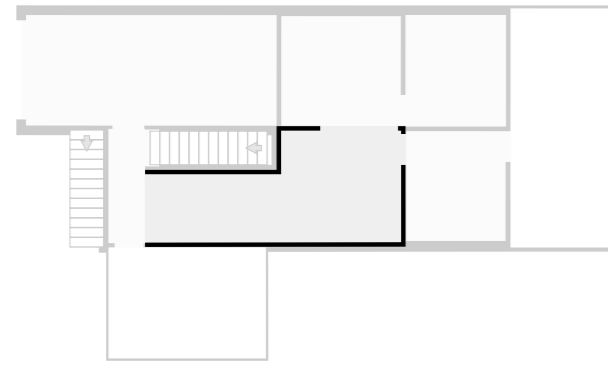
**1** Bathroom

Width: 0.95 m  
 Length: 2.97 m  
 Area: 2.83 m<sup>2</sup>  
 Perimeter: 7.85 m



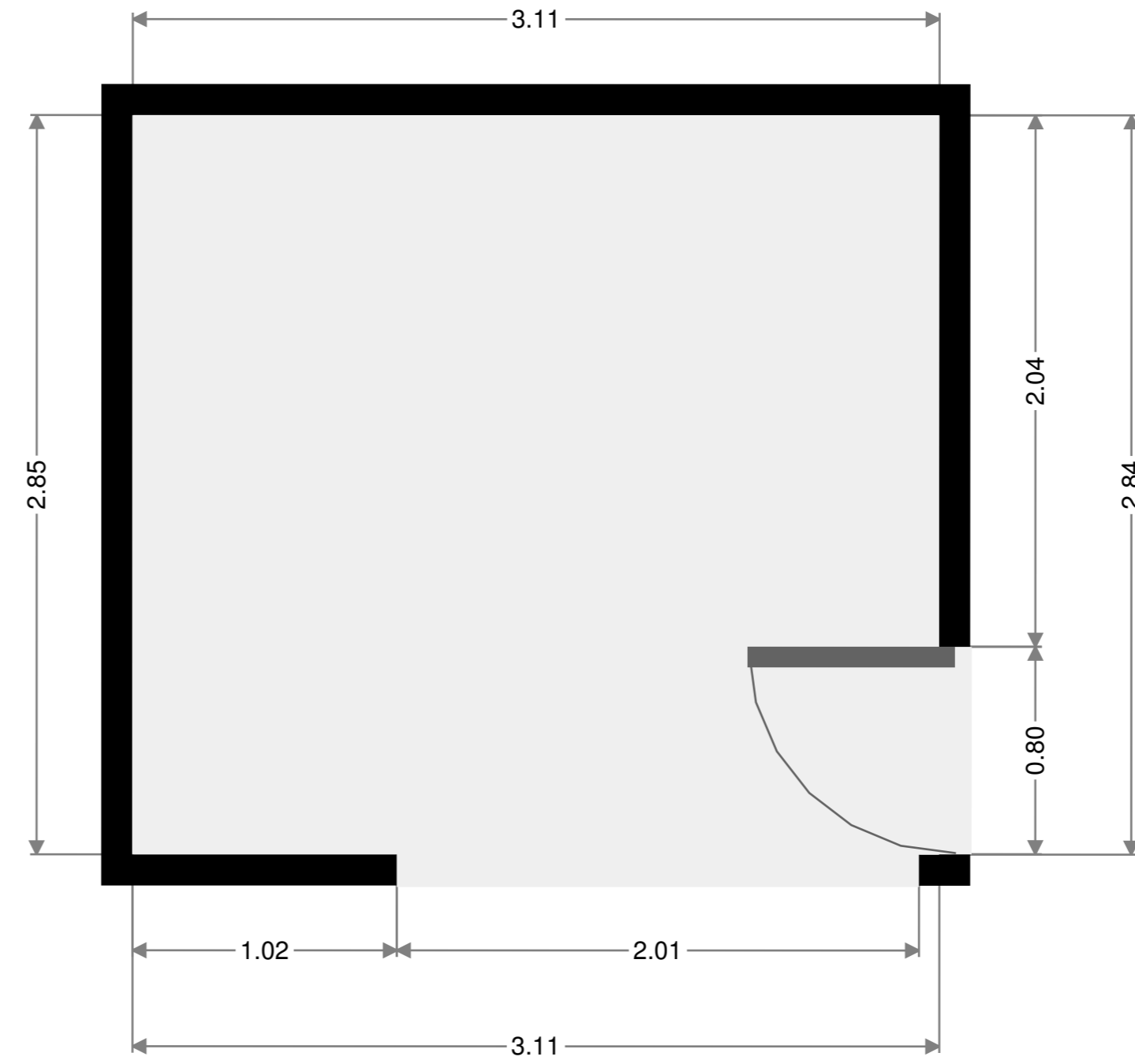
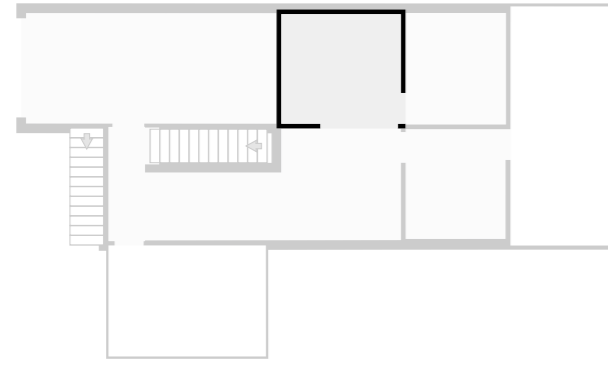
### Kitchenette

Width: 2.90 m  
 Length: 6.54 m  
 Area: 15.08 m<sup>2</sup>  
 Perimeter: 18.88 m  
 Ceiling Height: 2.17 m



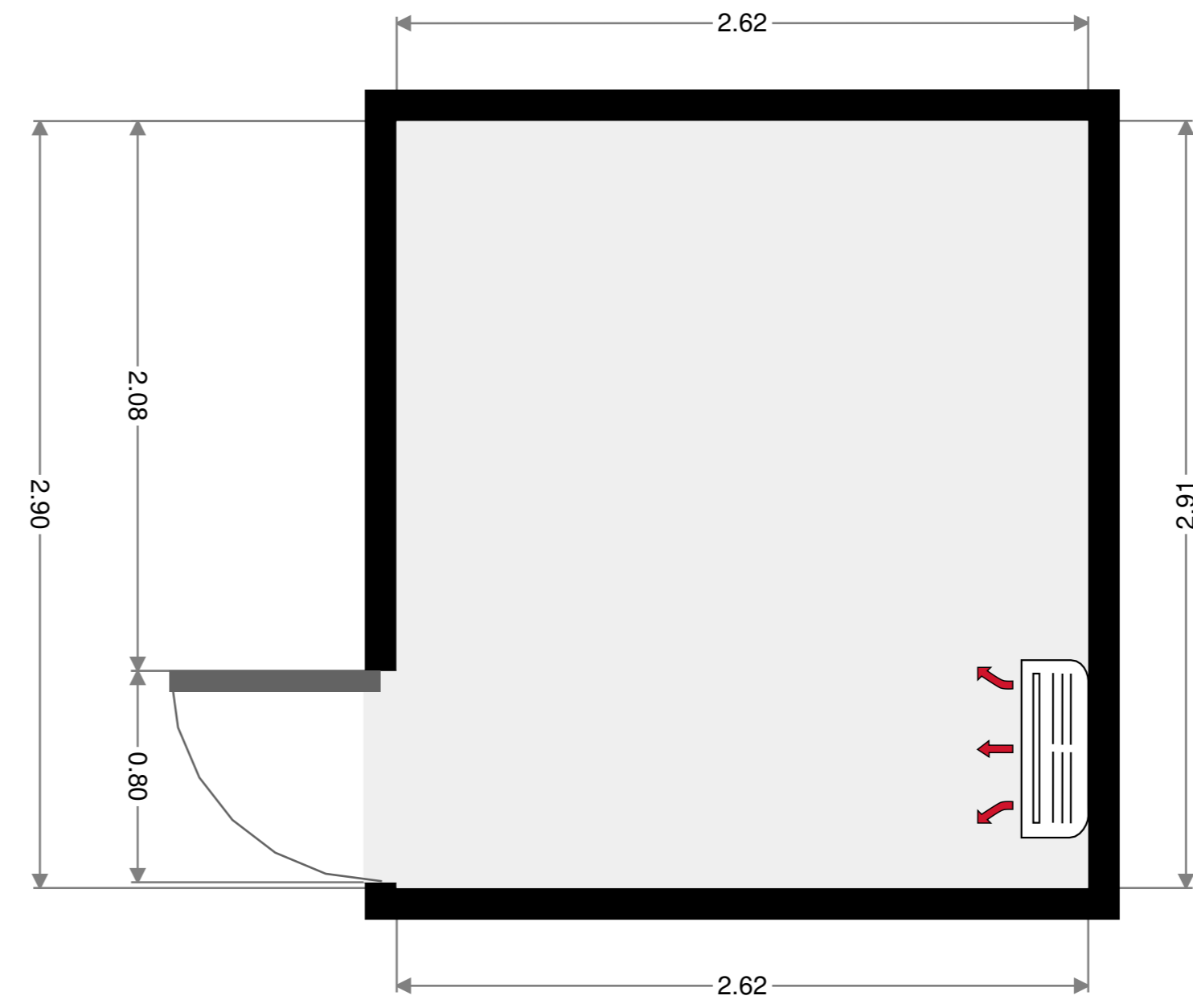
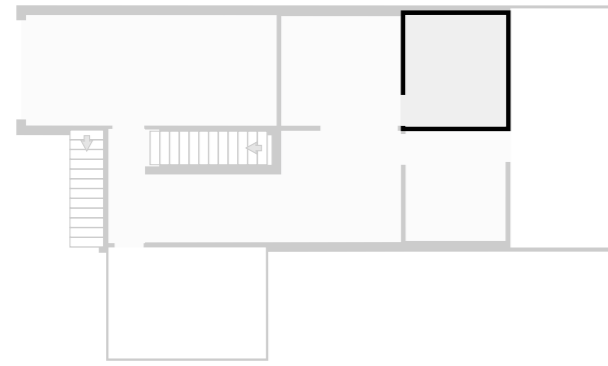
## Living Room

Width: 2.85 m  
 Length: 3.11 m  
 Area: 8.87 m<sup>2</sup>  
 Perimeter: 11.92 m



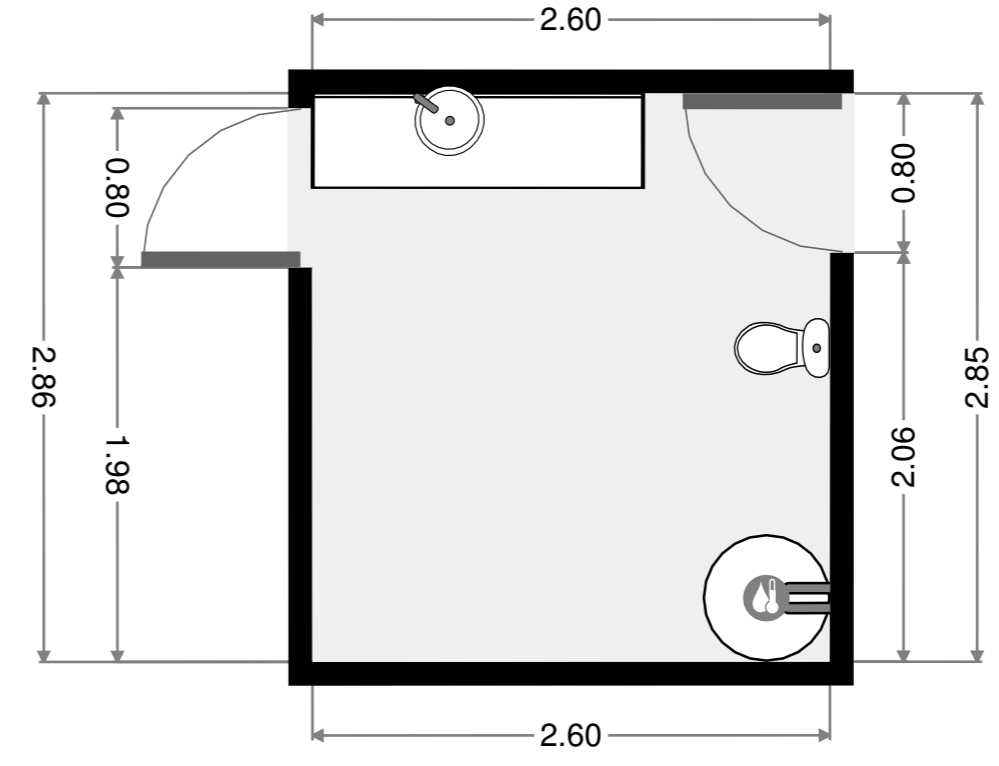
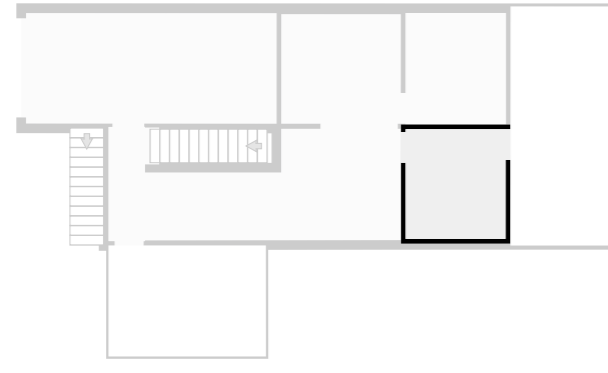
## Bedroom

Width: 2.62 m  
 Length: 2.91 m  
 Area: 7.59 m<sup>2</sup>  
 Perimeter: 11.04 m



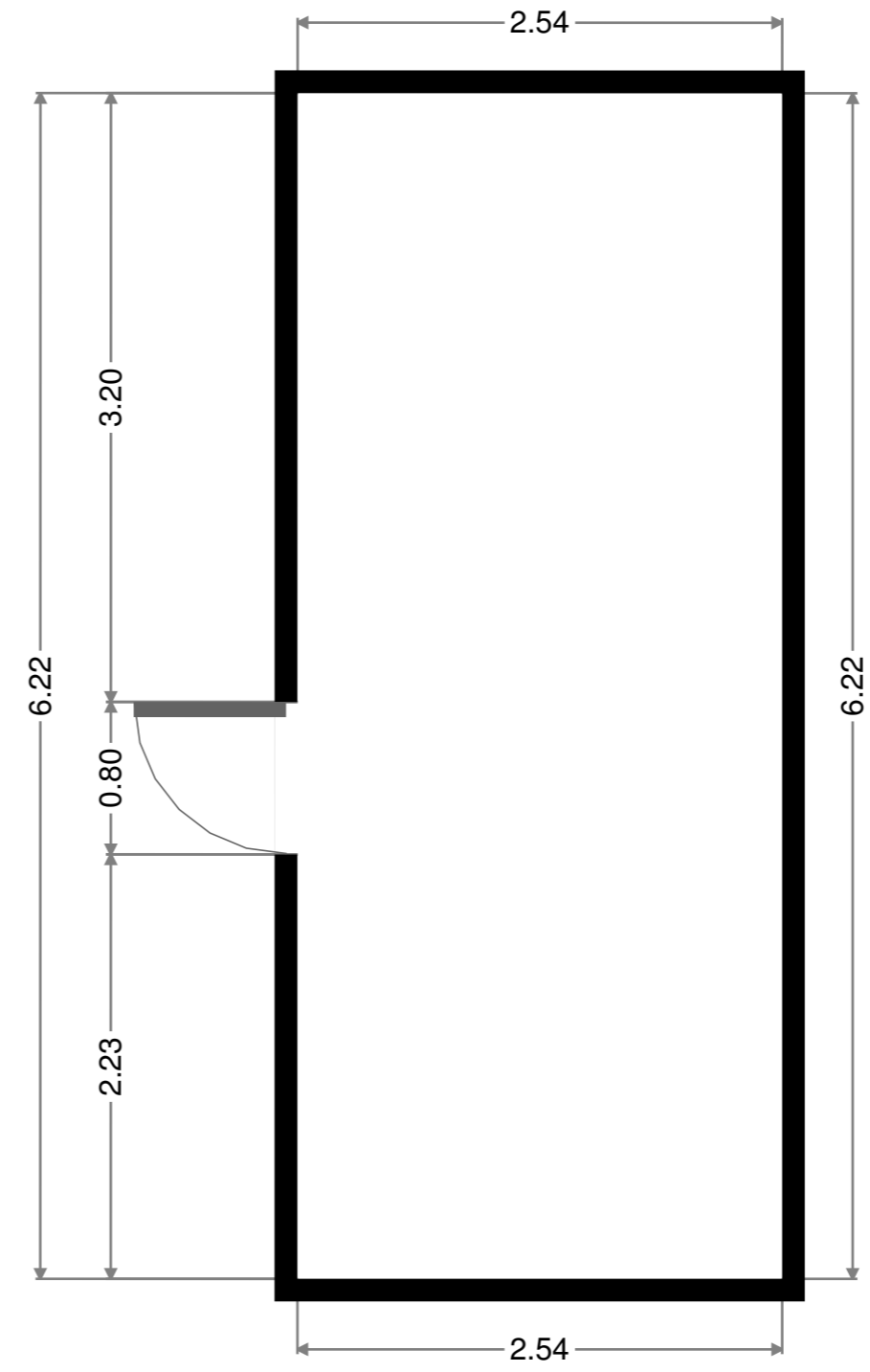
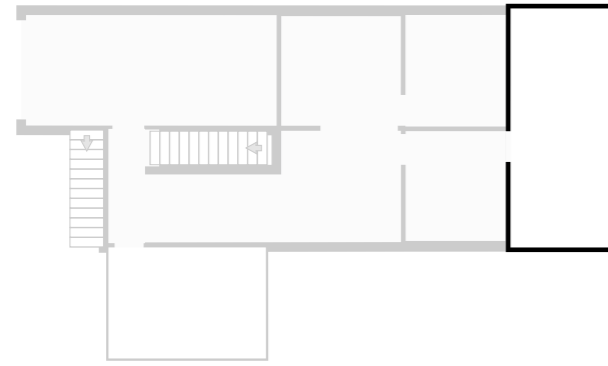
## Laundry Room

Width: 2.60 m  
 Length: 2.85 m  
 Area: 7.43 m<sup>2</sup>  
 Perimeter: 10.92 m



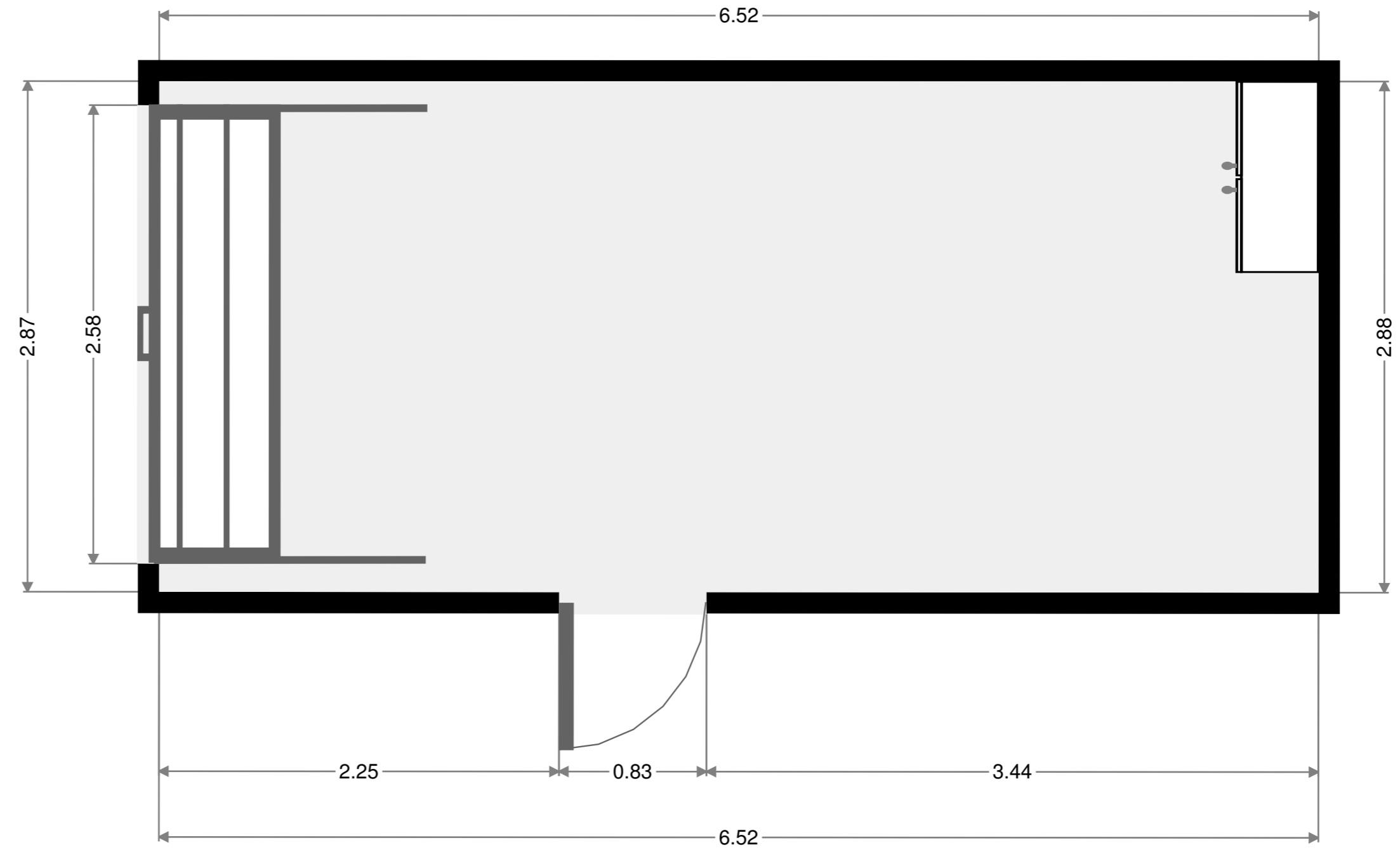
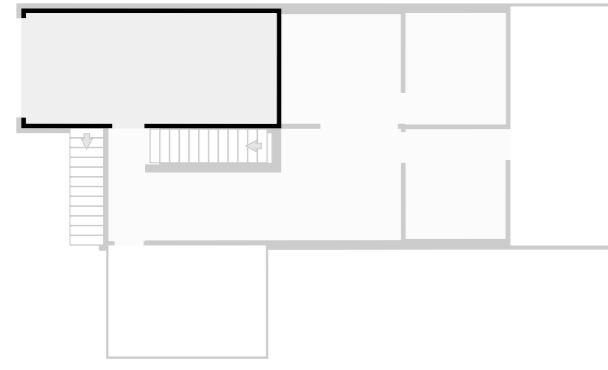
## Entertainment Area

Width: 2.54 m  
 Length: 6.22 m  
 Area: 15.84 m<sup>2</sup>  
 Perimeter: 17.54 m



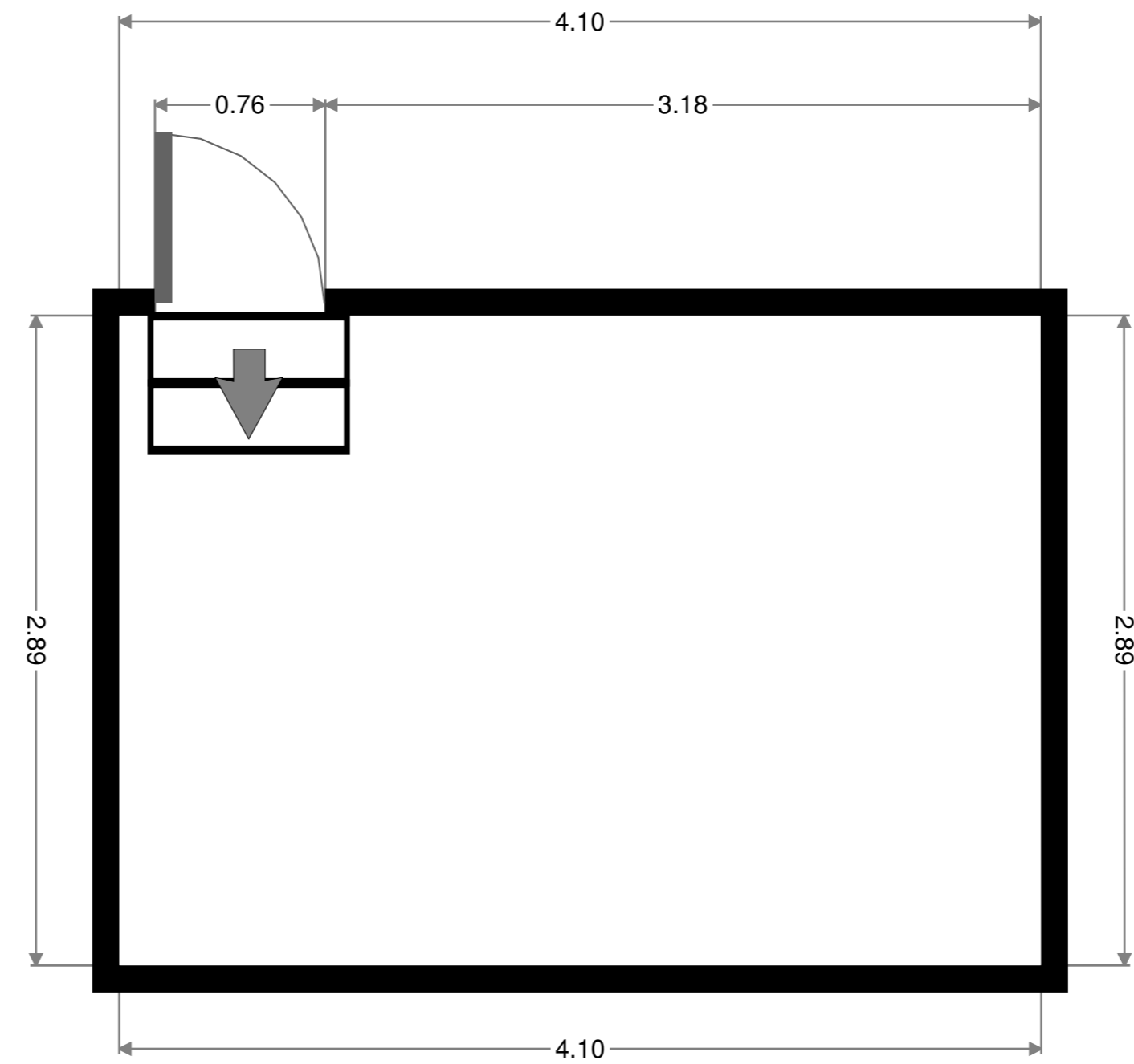
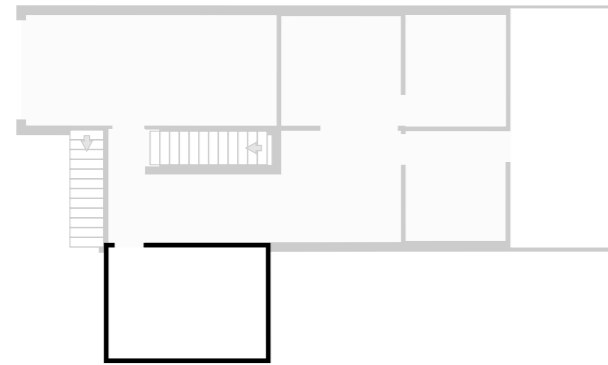
## Garage

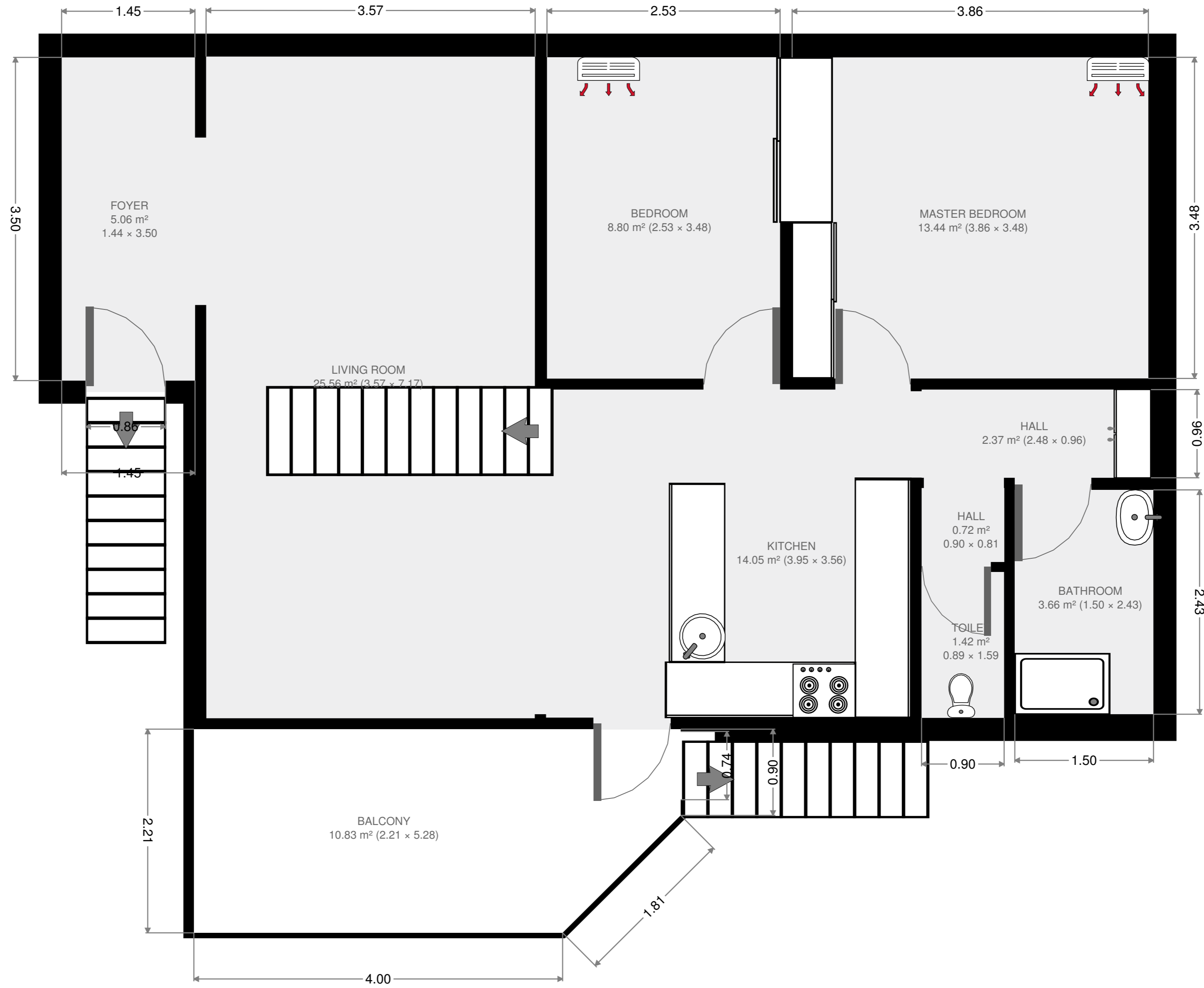
Width: 2.88 m  
 Length: 6.52 m  
 Area: 18.76 m<sup>2</sup>  
 Perimeter: 18.80 m



## Outdoor Area

Width: 2.89 m  
 Length: 4.10 m  
 Area: 11.84 m<sup>2</sup>  
 Perimeter: 13.98 m  
 Ceiling Height: 2.17 m





Ray White Rockhampton  
 Rockhampton.pm2@raywhite.com  
 (07)4923 0000  
 2016-11-07

117 m<sup>2</sup>

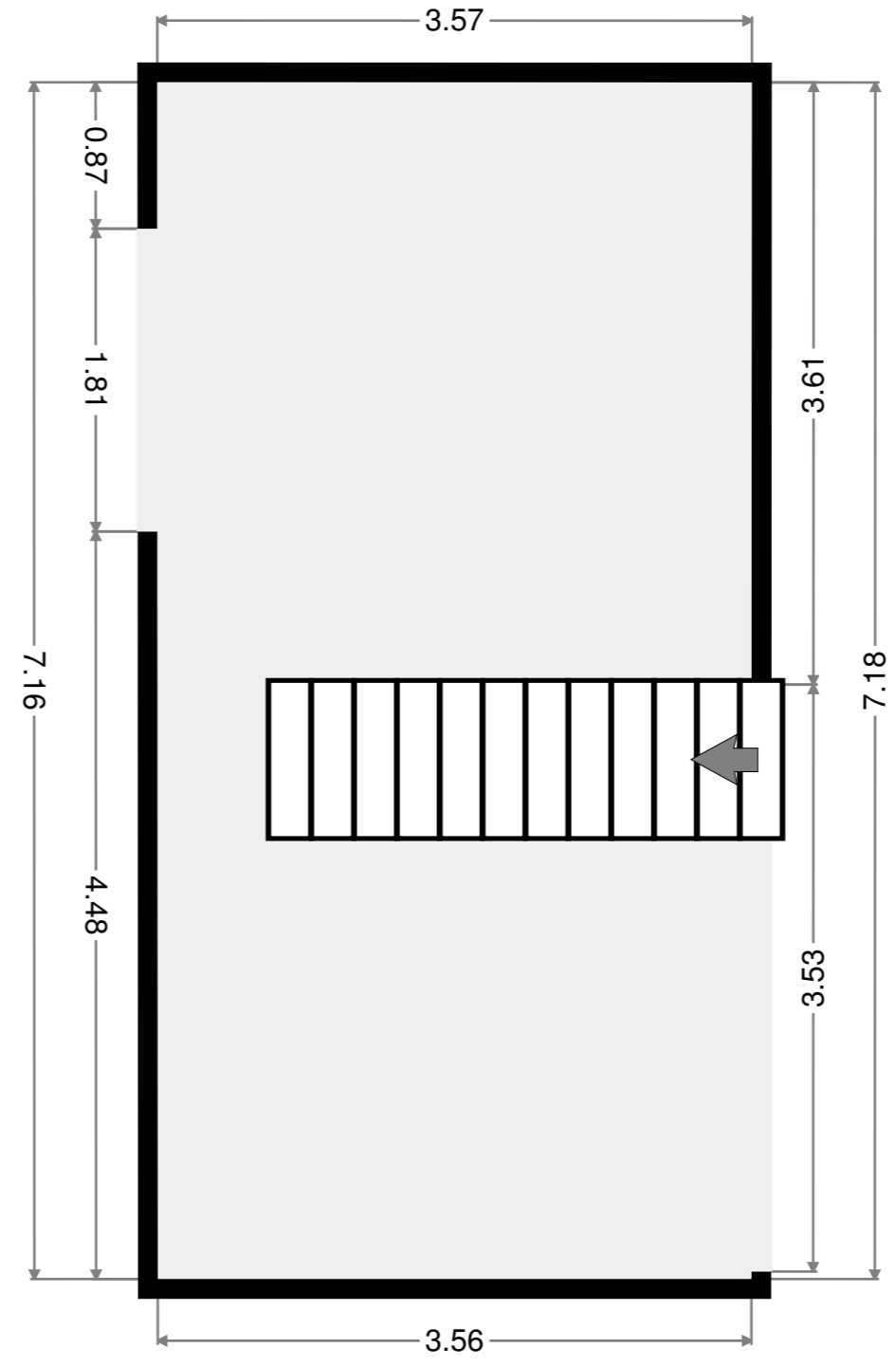
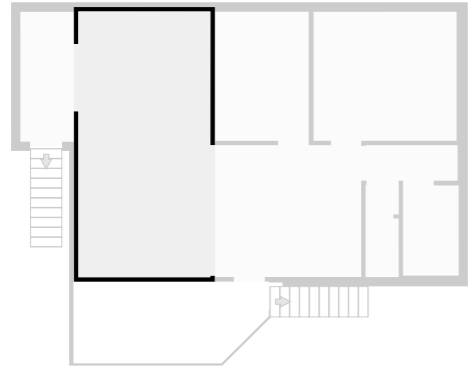
2 Floors

3 Bedrooms

1 Bathroom

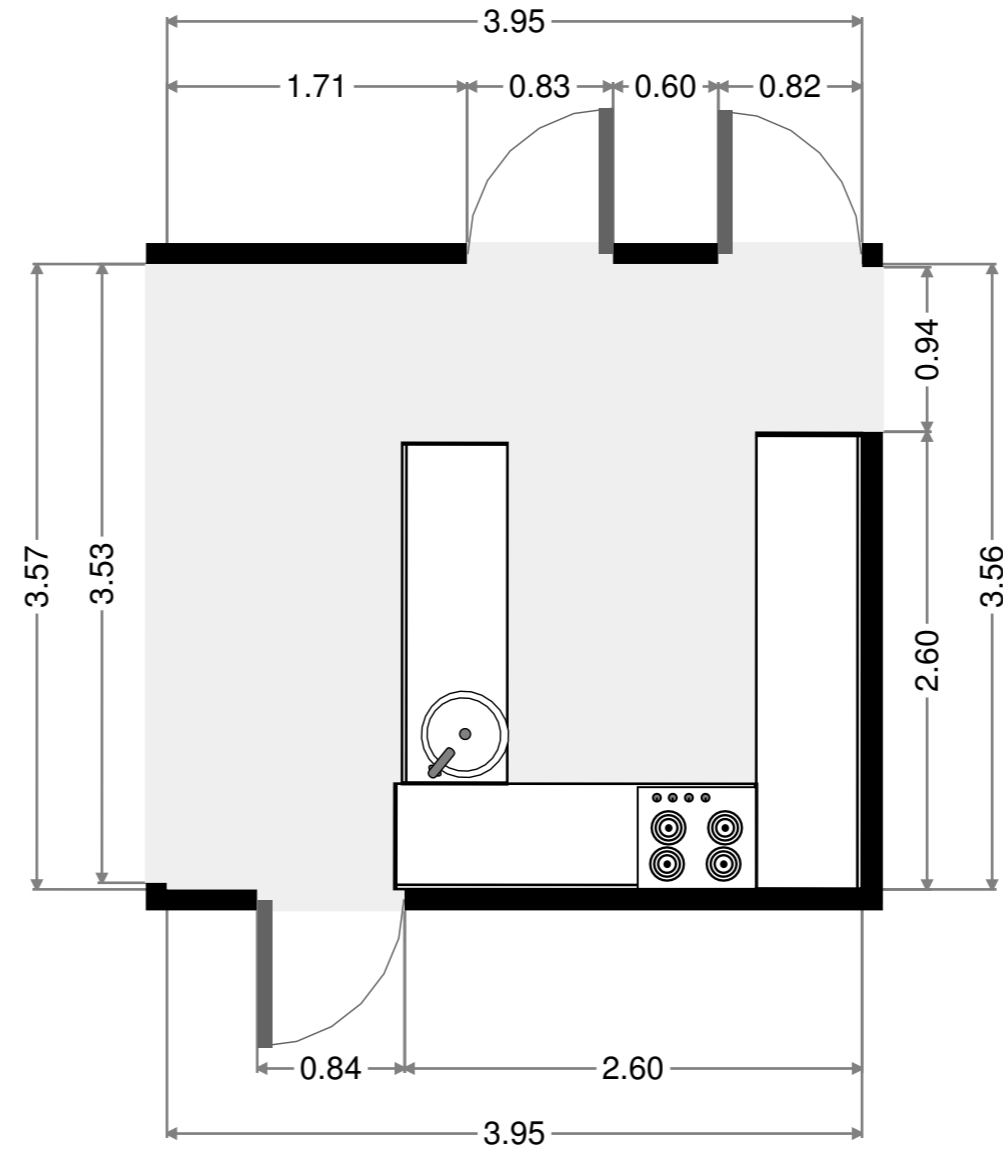
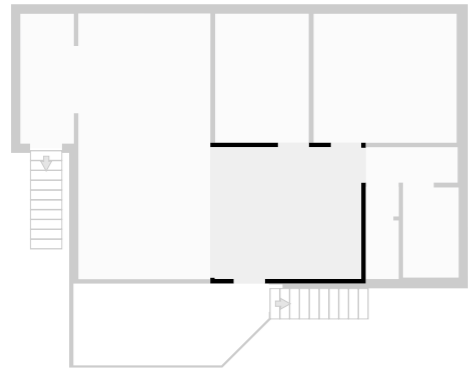
# Living Room

Width: 3.57 m  
 Length: 7.17 m  
 Area: 25.56 m<sup>2</sup>  
 Perimeter: 21.47 m



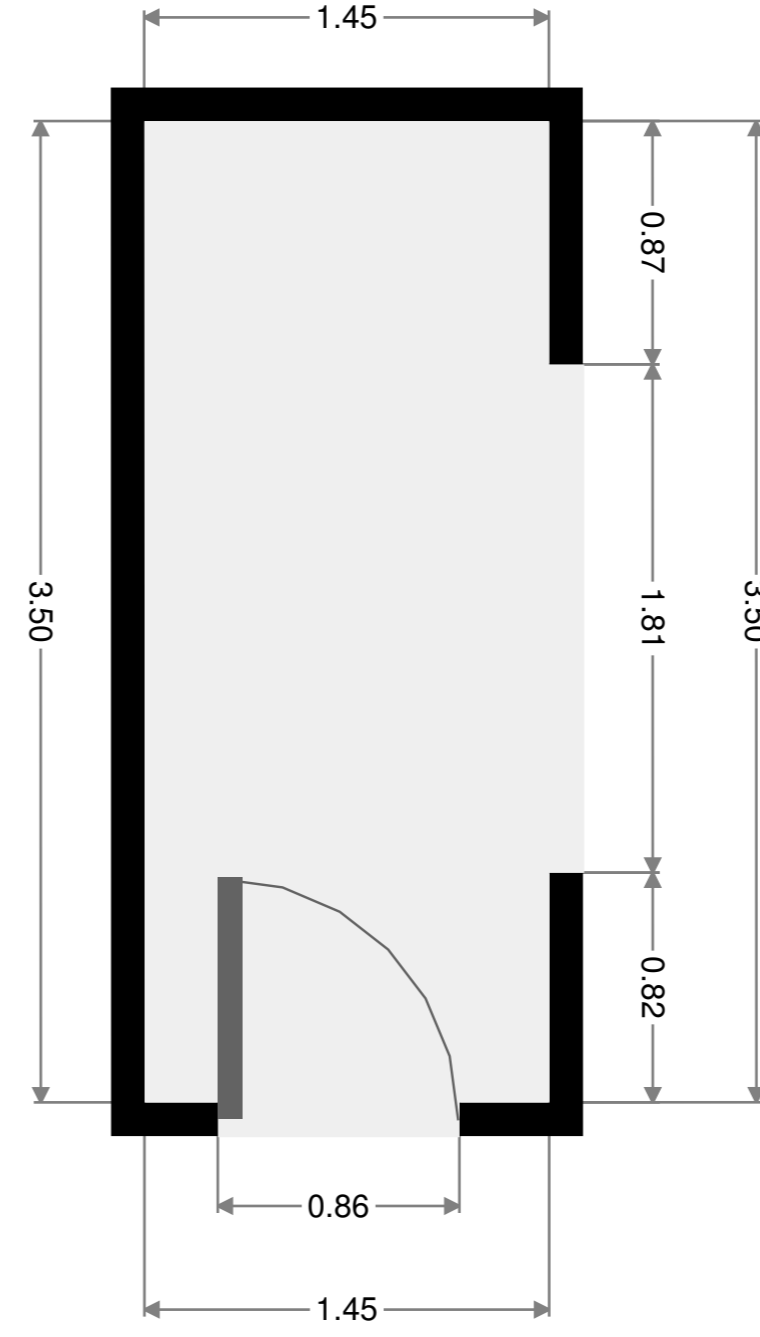
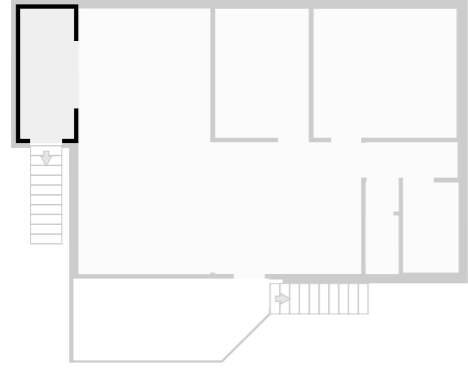
# Kitchen

Width: 3.56 m  
 Length: 3.95 m  
 Area: 14.05 m<sup>2</sup>  
 Perimeter: 15.02 m



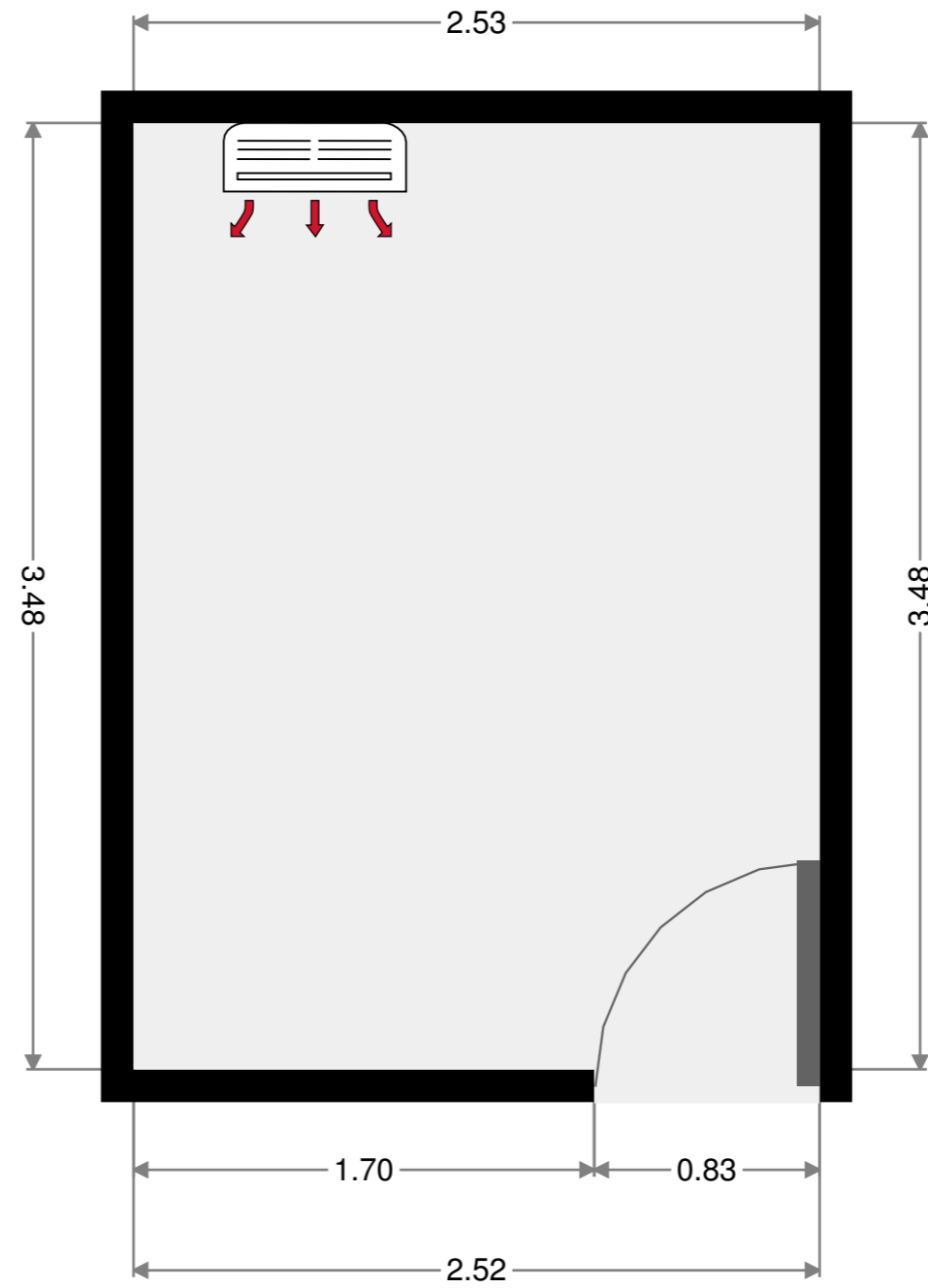
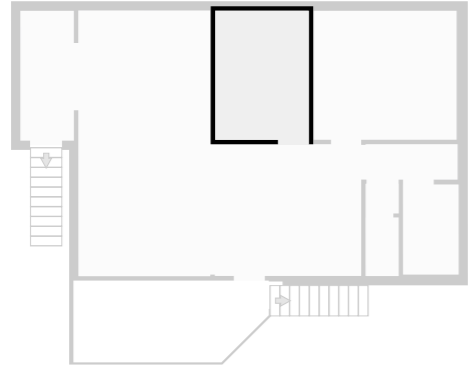
## Foyer

Width: 1.44 m  
 Length: 3.50 m  
 Area: 5.06 m<sup>2</sup>  
 Perimeter: 9.90 m



## Bedroom

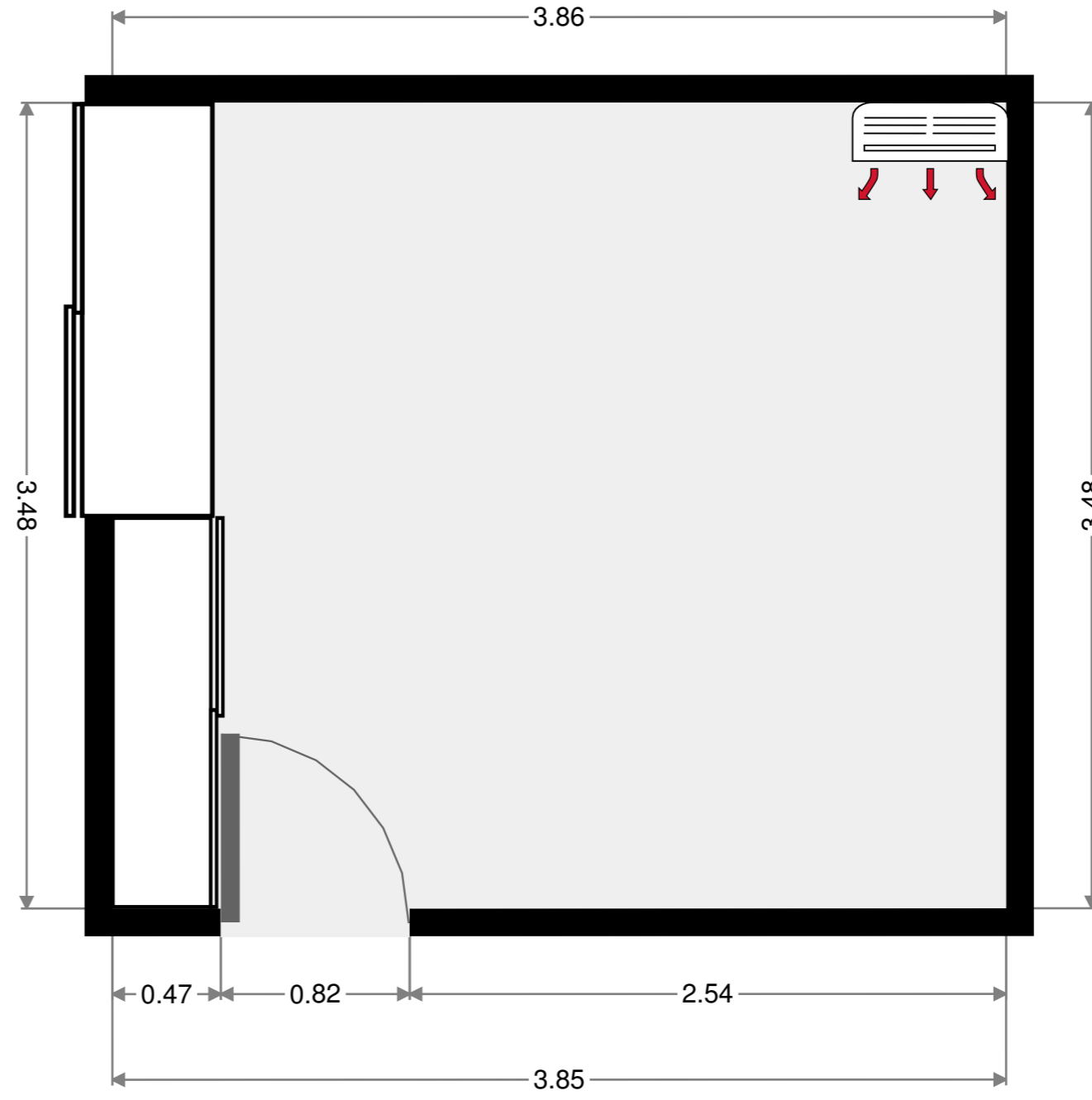
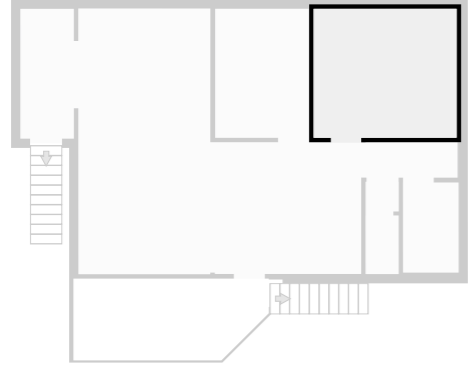
Width: 2.53 m  
 Length: 3.48 m  
 Area: 8.80 m<sup>2</sup>  
 Perimeter: 12.02 m





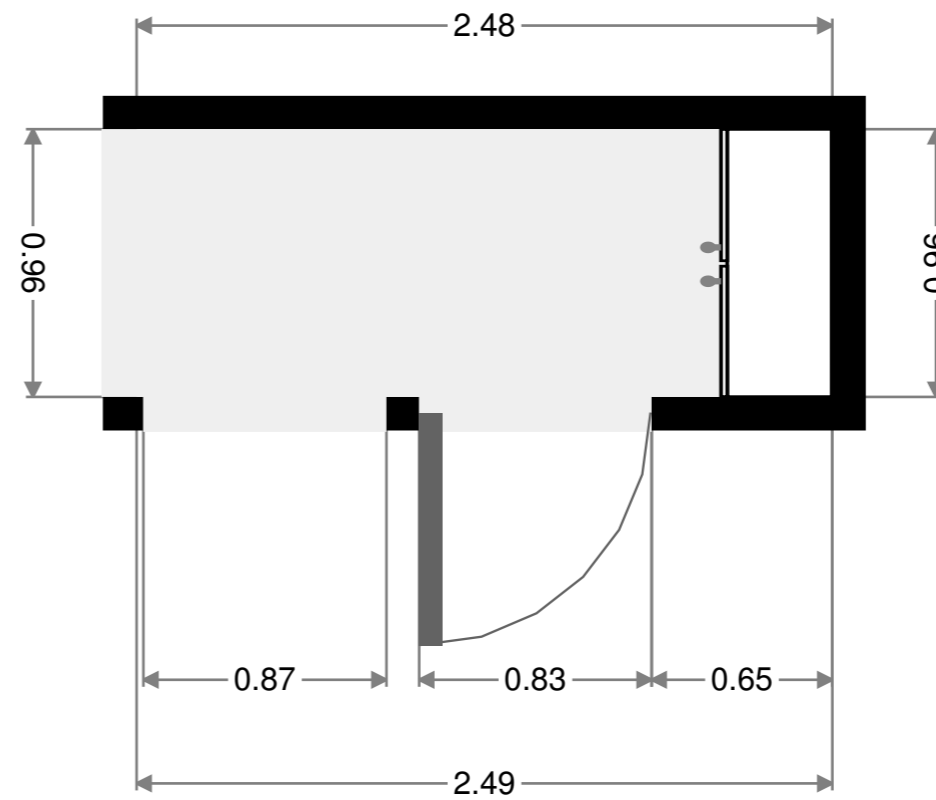
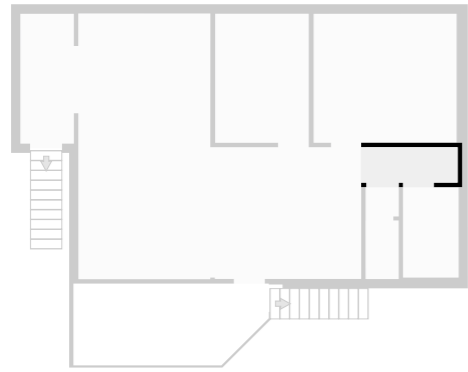
# Master Bedroom

Width: 3.48 m  
 Length: 3.86 m  
 Area: 13.44 m<sup>2</sup>  
 Perimeter: 14.68 m



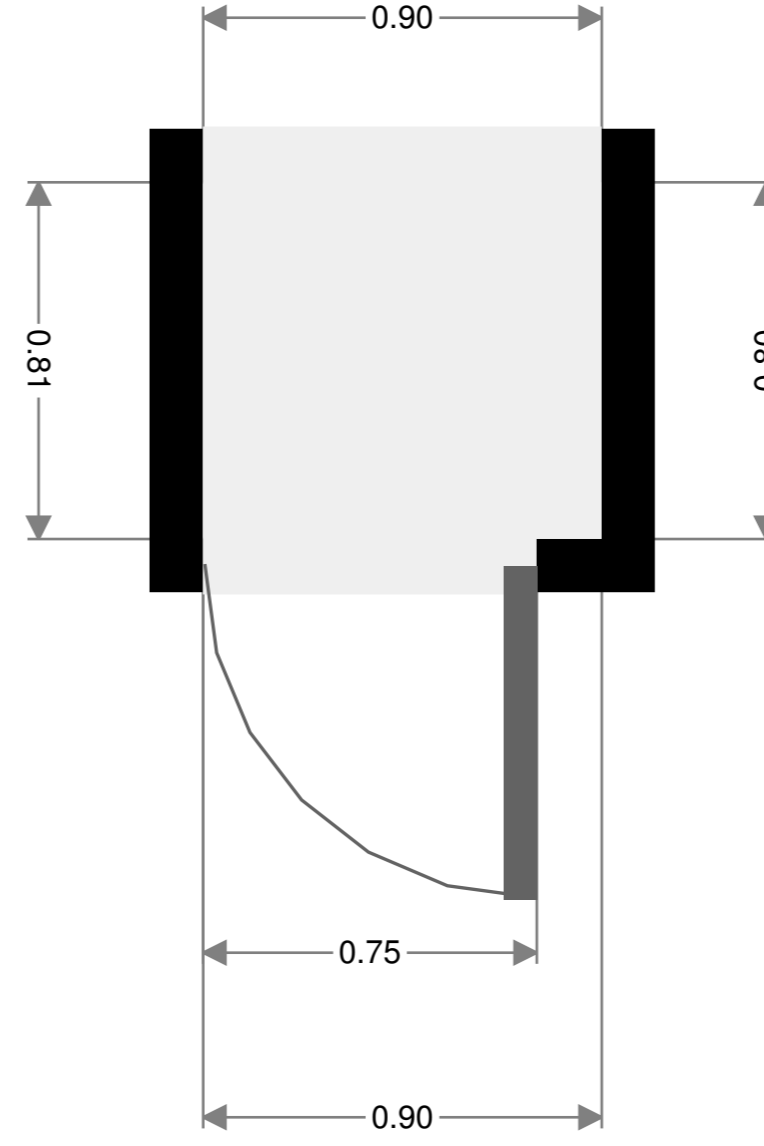
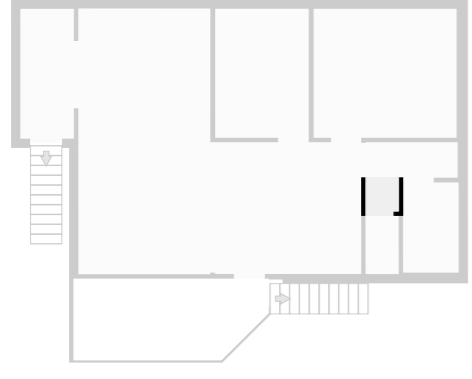
# Hall

Width: 0.96 m  
 Length: 2.48 m  
 Area: 2.37 m<sup>2</sup>  
 Perimeter: 6.88 m



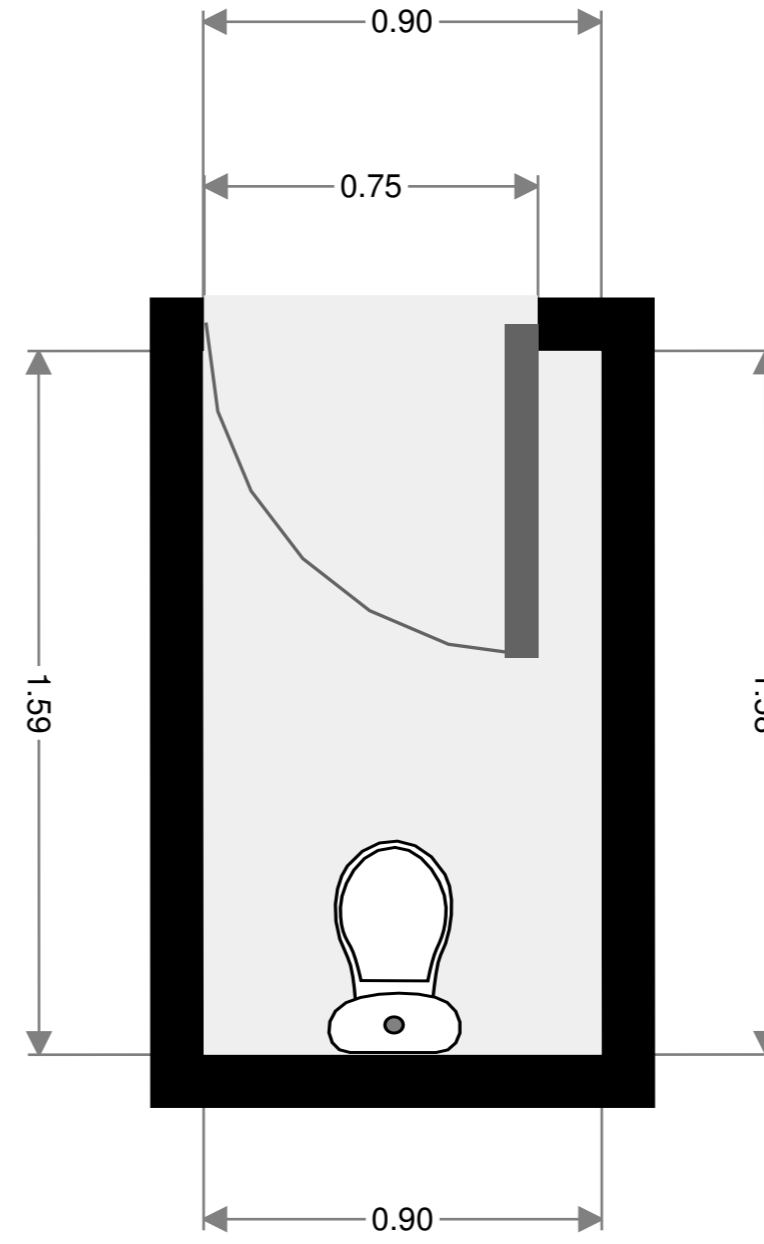
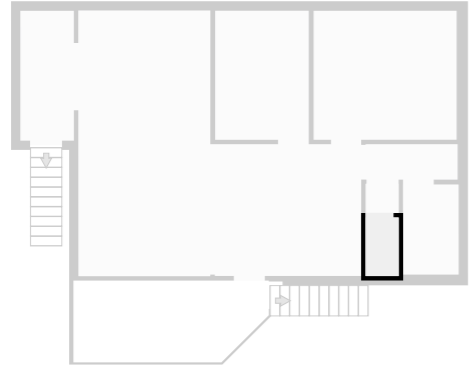
## Hall

Width: 0.81 m  
Length: 0.90 m  
Area: 0.72 m<sup>2</sup>  
Perimeter: 3.40 m



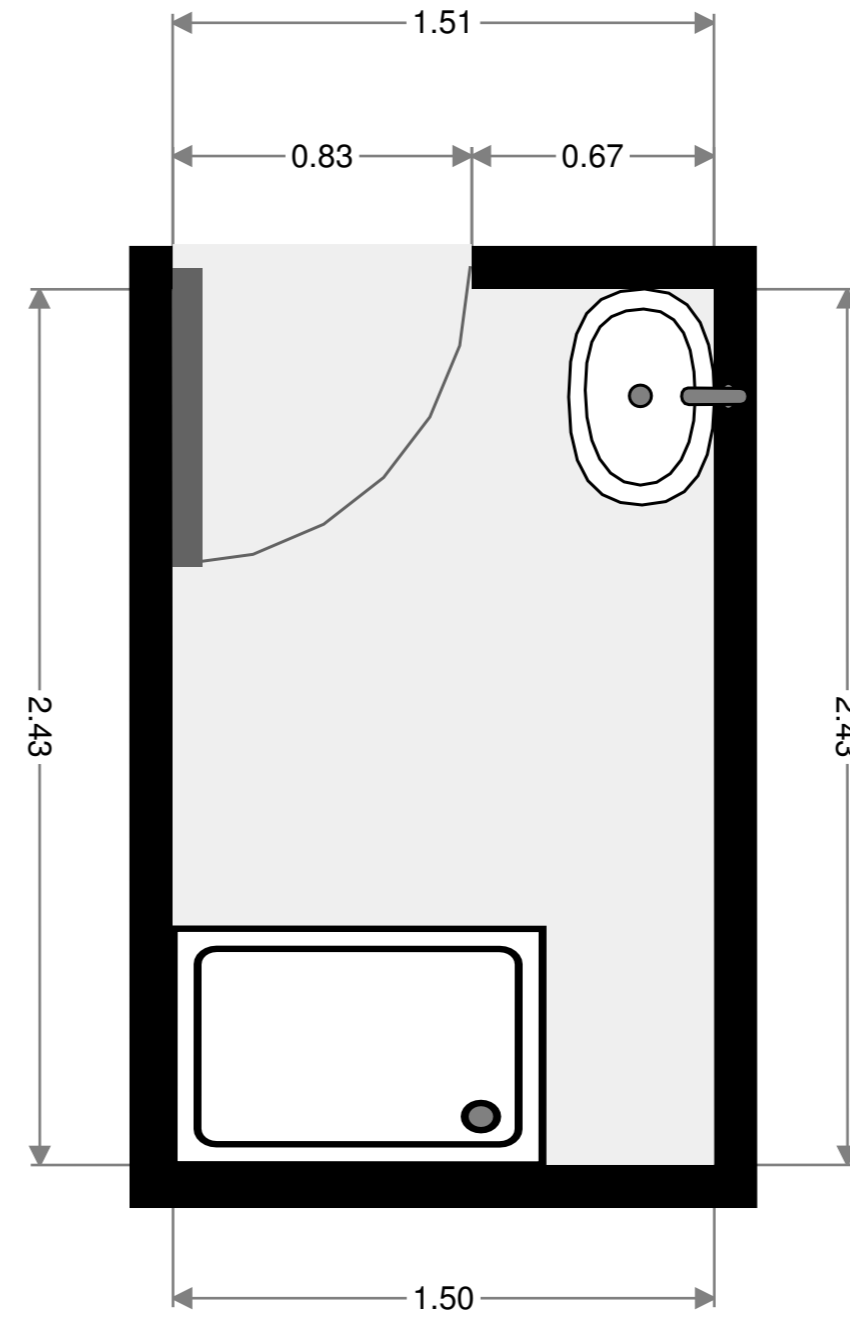
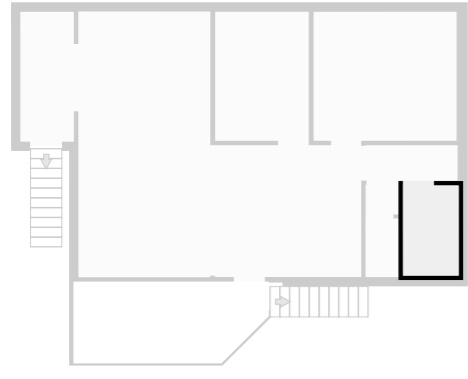
## Toilet

Width: 0.89 m  
Length: 1.59 m  
Area: 1.42 m<sup>2</sup>  
Perimeter: 4.95 m



## Bathroom

Width: 1.50 m  
 Length: 2.43 m  
 Area: 3.66 m<sup>2</sup>  
 Perimeter: 7.87 m



## Balcony

Width: 2.21 m  
 Length: 5.28 m  
 Area: 10.83 m<sup>2</sup>  
 Perimeter: 14.22 m  
 Ceiling Height: 2.17 m

