

434 Moyle Street

SUBMITTED BY
Ray White Rockhampton Casey
stockers@cqoz.com

CREATED ON
2021-11-30

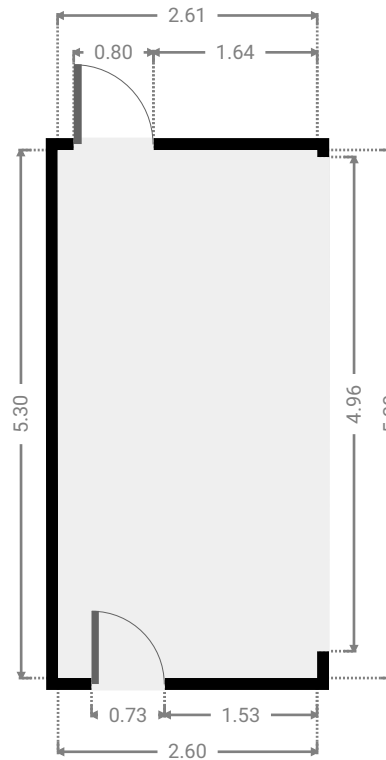
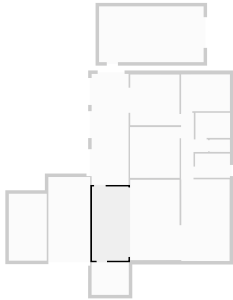
Floors 1

▼ Ground Floor



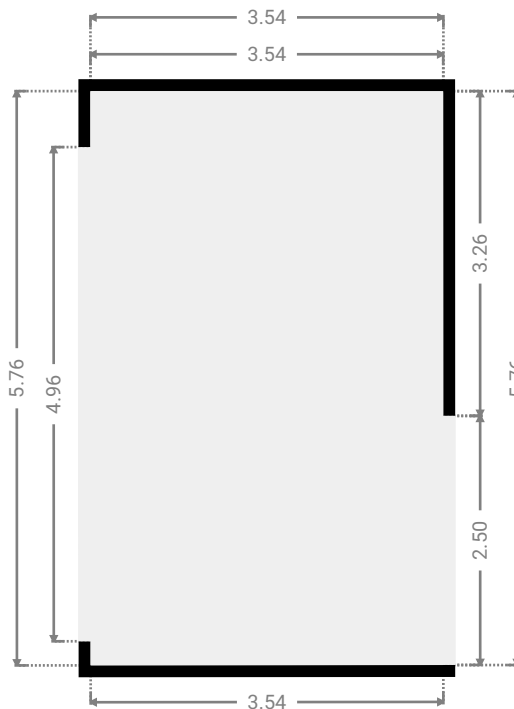
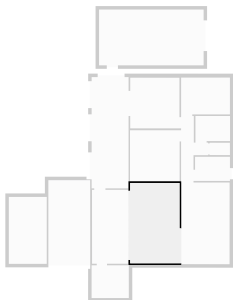
▼ **Living Room**
Ground Floor

WIDTH: 2.61 m • LENGTH: 5.30 m
AREA: 13.80 m² • PERIMETER: 15.81 m



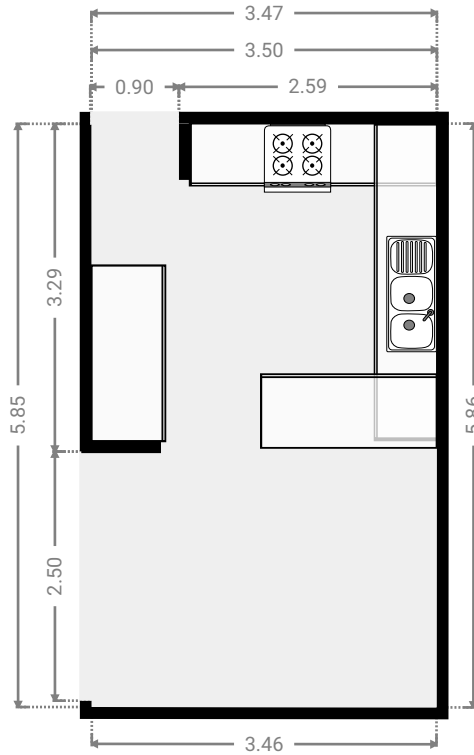
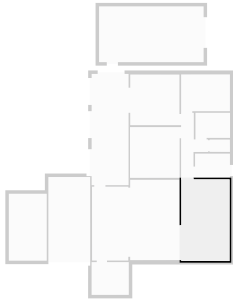
▼ **Living Room**
Ground Floor

WIDTH: 3.54 m • LENGTH: 5.76 m
AREA: 20.40 m² • PERIMETER: 18.61 m



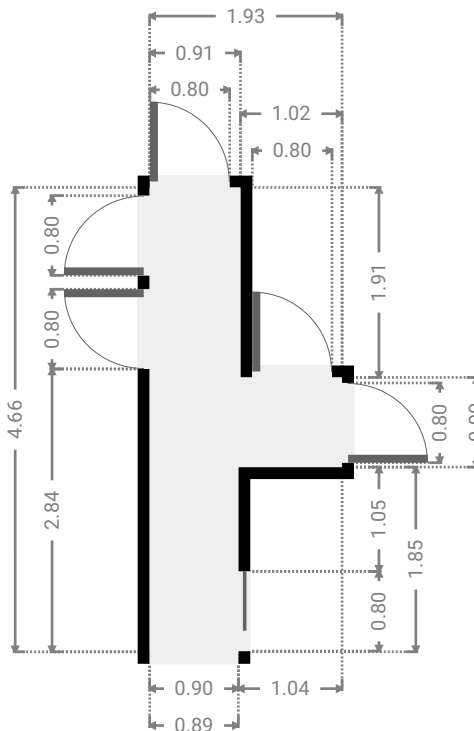
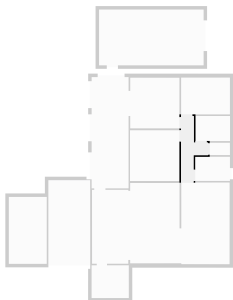
▼ **Kitchen**
Ground Floor

WIDTH: 3.47 m • LENGTH: 5.86 m
AREA: 20.28 m² • PERIMETER: 18.64 m



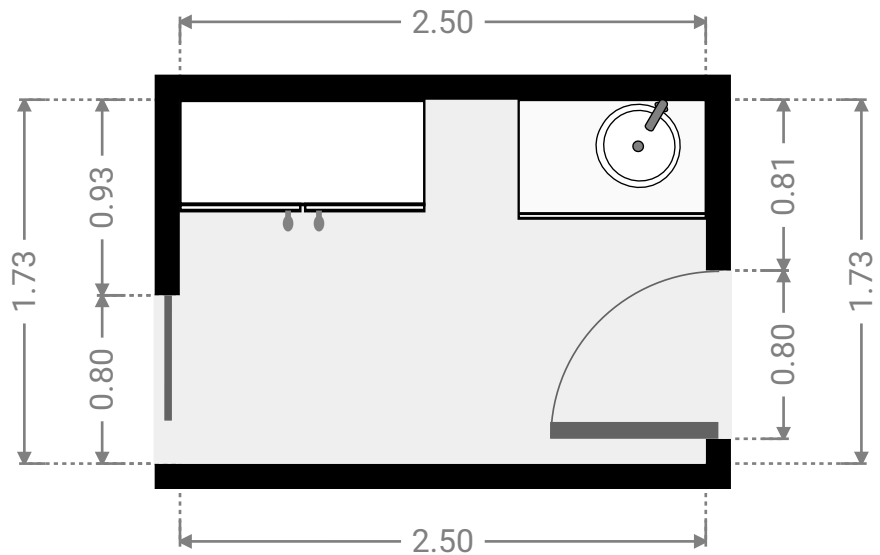
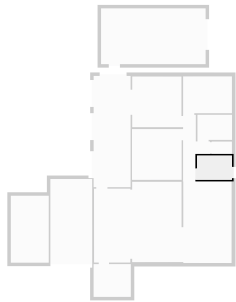
▼ **Hall**
Ground Floor

WIDTH: 1.93 m • LENGTH: 4.66 m
AREA: 5.13 m² • PERIMETER: 13.18 m



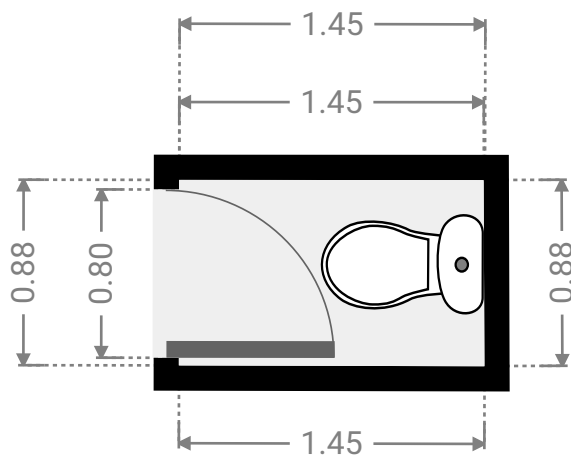
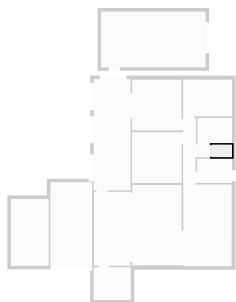
▼ **Laundry Room**
Ground Floor

WIDTH: 2.50 m • LENGTH: 1.73 m
AREA: 4.32 m² • PERIMETER: 8.46 m



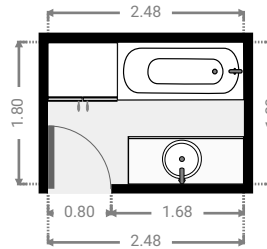
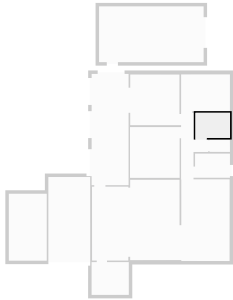
▼ **Toilet**
Ground Floor

WIDTH: 1.45 m • LENGTH: 0.88 m
AREA: 1.28 m² • PERIMETER: 4.67 m



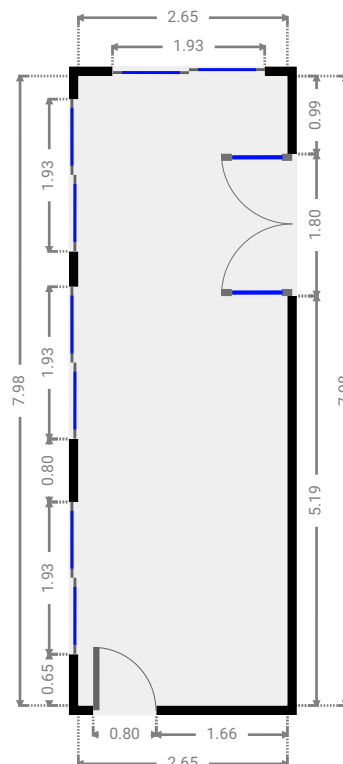
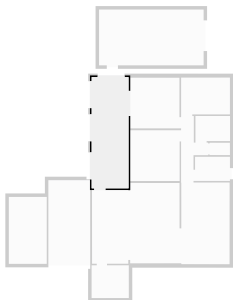
▼ Bathroom
Ground Floor

WIDTH: 2.48 m • LENGTH: 1.80 m
AREA: 4.46 m² • PERIMETER: 8.56 m



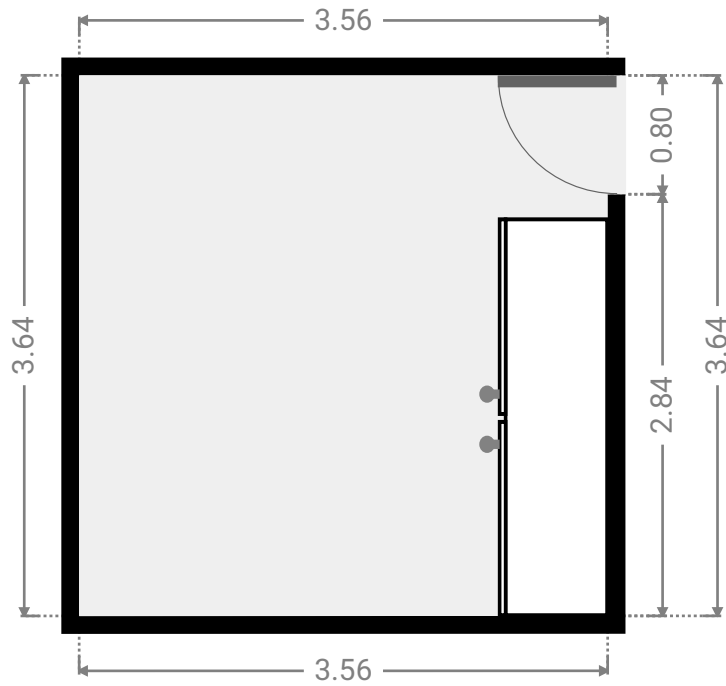
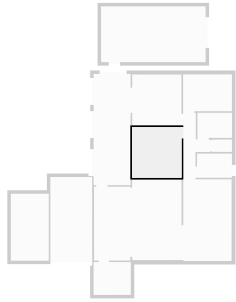
▼ Living Room
Ground Floor

WIDTH: 2.65 m • LENGTH: 7.98 m
AREA: 21.14 m² • PERIMETER: 21.26 m



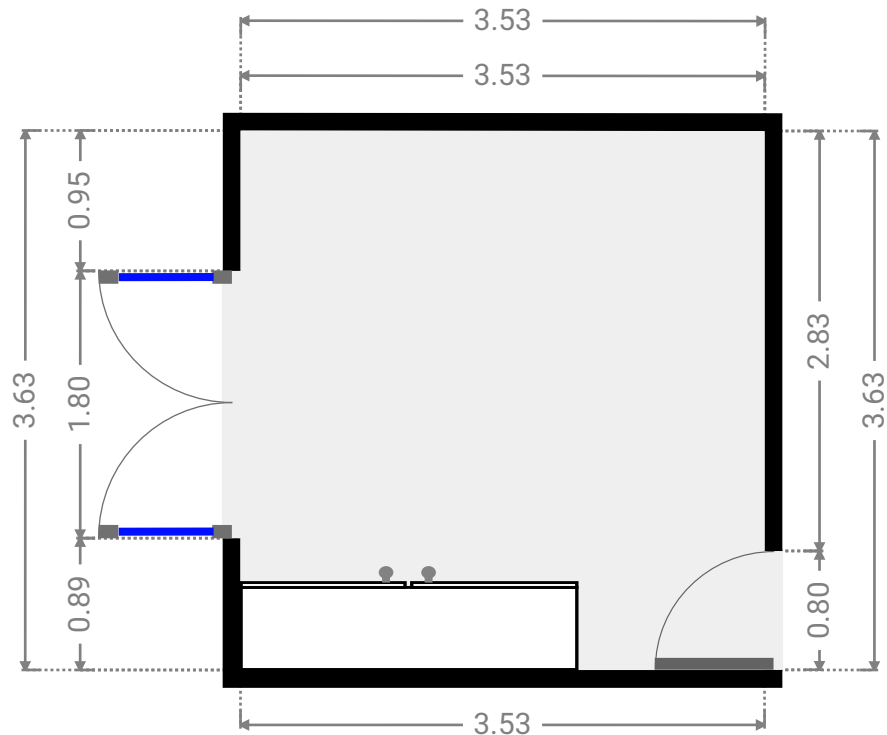
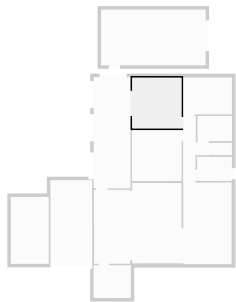
▼ **Master Bedroom**
Ground Floor

WIDTH: 3.56 m • LENGTH: 3.64 m
AREA: 12.96 m² • PERIMETER: 14.40 m



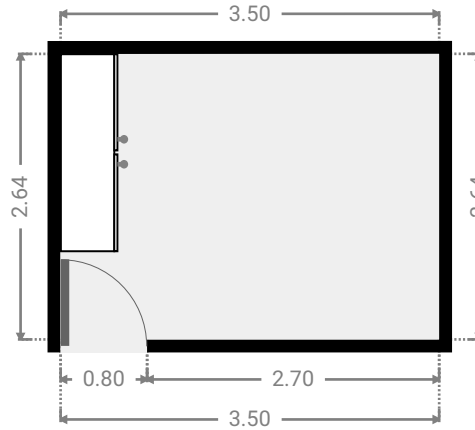
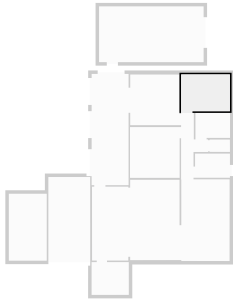
▼ **Bedroom**
Ground Floor

WIDTH: 3.53 m • LENGTH: 3.63 m
AREA: 12.82 m² • PERIMETER: 14.32 m



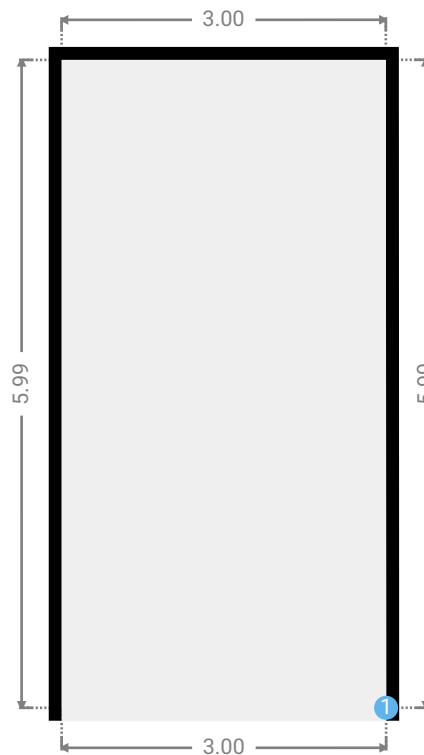
▼ **Bedroom**
Ground Floor

WIDTH: 3.50 m • LENGTH: 2.64 m
AREA: 9.24 m² • PERIMETER: 12.28 m



▼ **Garage**
Ground Floor

WIDTH: 3.00 m • LENGTH: 5.99 m
AREA: 17.96 m² • PERIMETER: 17.98 m



▼ **Garage**/Ground Floor

1 OPENING

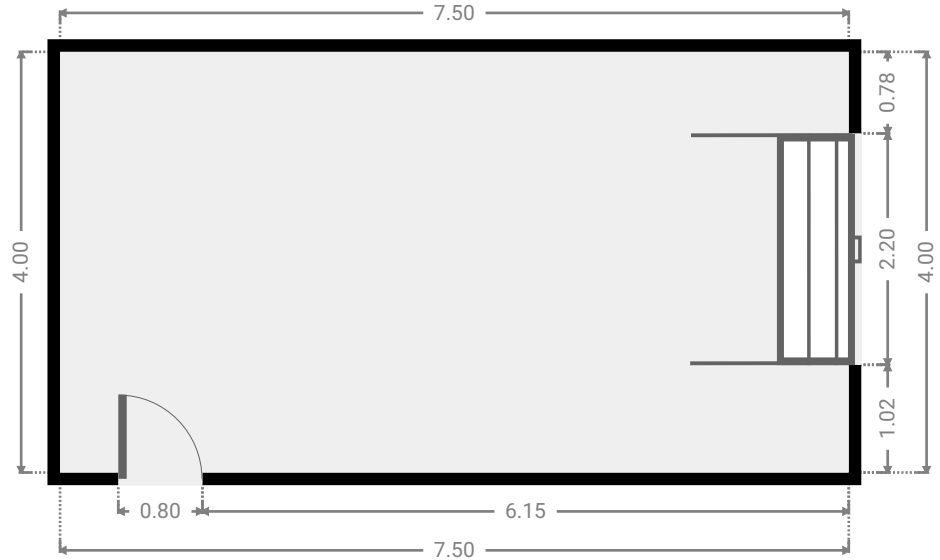
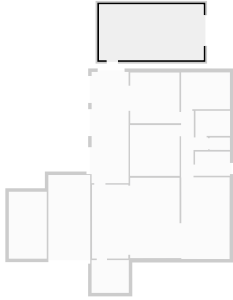
Height
0.00 m



FLOORS: 1

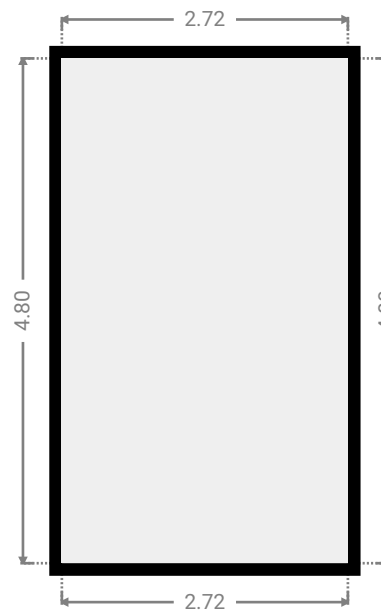
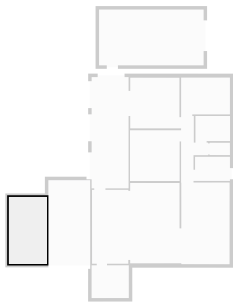
▼ **Garage**
Ground Floor

WIDTH: 7.50 m • LENGTH: 4.00 m
AREA: 30.00 m² • PERIMETER: 23.00 m



▼ **Garage**
Ground Floor

WIDTH: 2.72 m • LENGTH: 4.80 m
AREA: 13.06 m² • PERIMETER: 15.04 m



▼ Other
Ground Floor

WIDTH: 2.67 m • LENGTH: 2.35 m
AREA: 6.27 m² • PERIMETER: 10.04 m

