

43 Belbowrie Avenue

SUBMITTED BY

Ray White Rockhampton Casey
stockers@cqoz.com

CREATED ON

2022-08-31

Floors

1

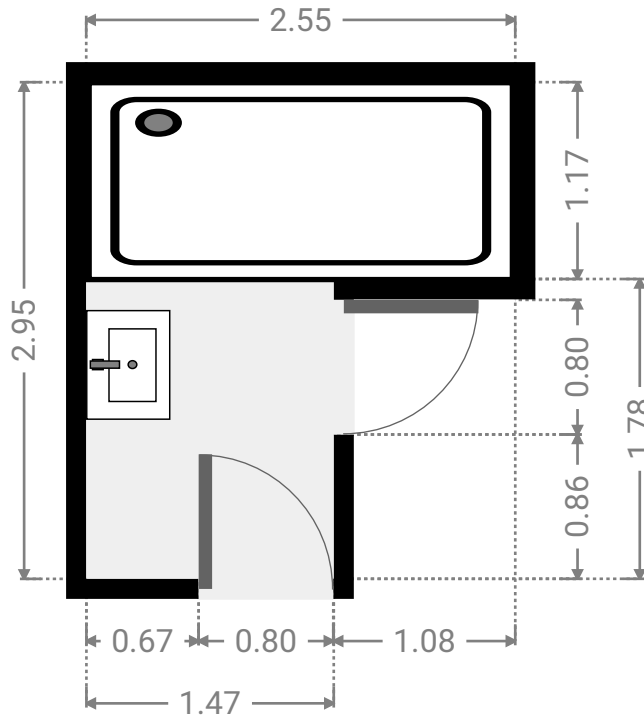
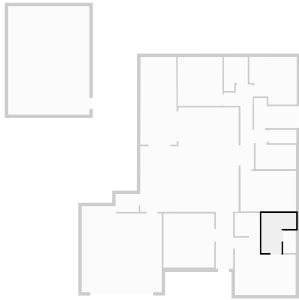
▼ Ground Floor



FLOORS: 1

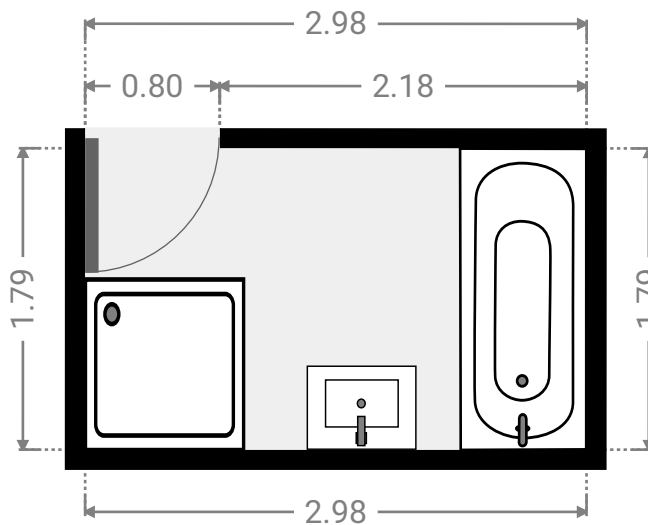
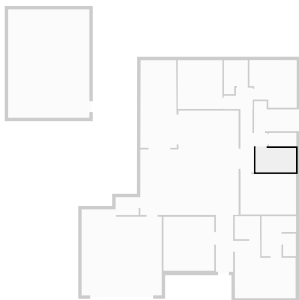
▼ Bathroom
Ground Floor

WIDTH: 2.55 m • LENGTH: 2.95 m
AREA: 5.60 m² • PERIMETER: 11.00 m



▼ Bathroom
Ground Floor

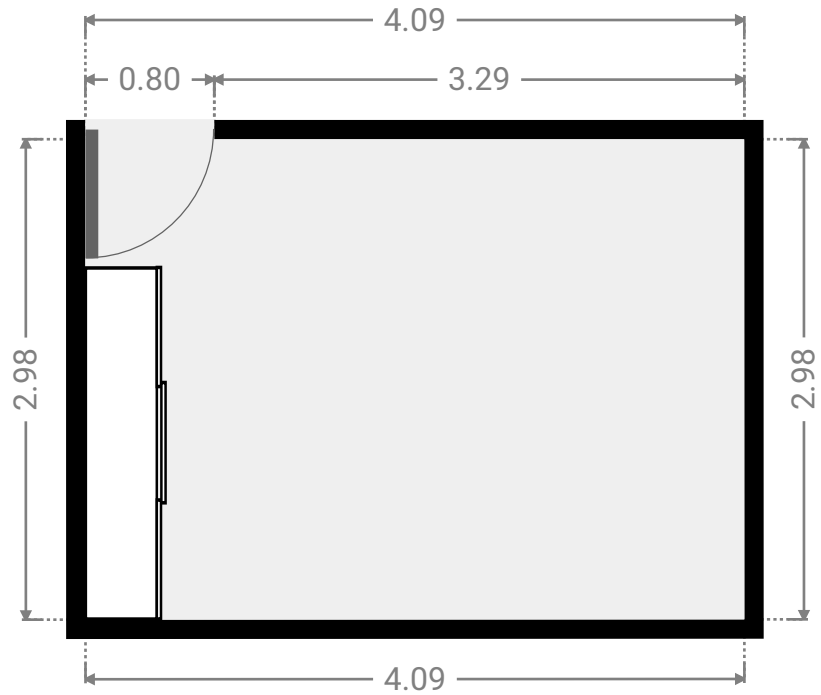
WIDTH: 2.98 m • LENGTH: 1.79 m
AREA: 5.34 m² • PERIMETER: 9.54 m



FLOORS: 1

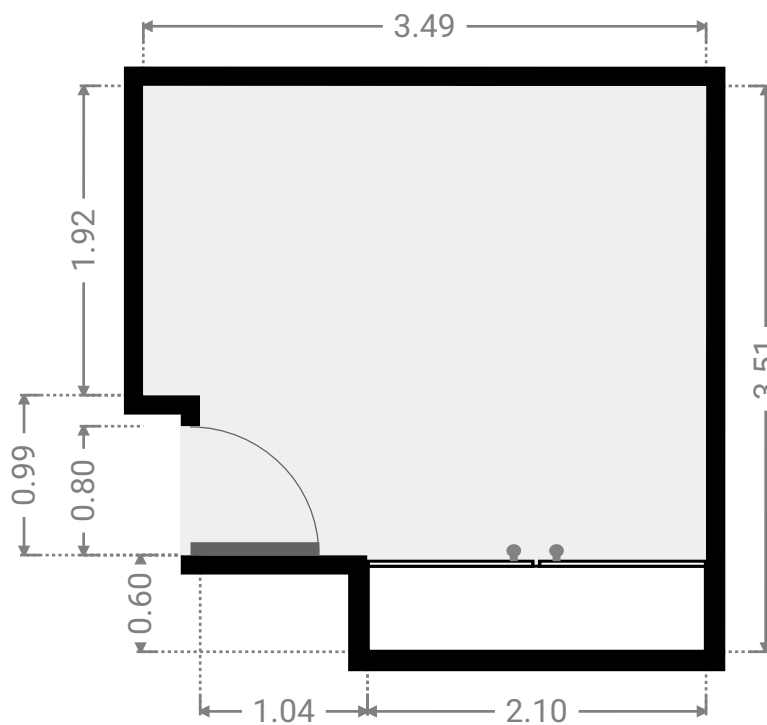
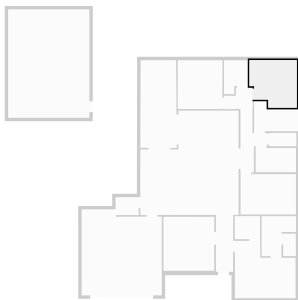
▼ **Bedroom**
Ground Floor

WIDTH: 4.09 m • LENGTH: 2.98 m
AREA: 12.19 m² • PERIMETER: 14.14 m



▼ **Bedroom**
Ground Floor

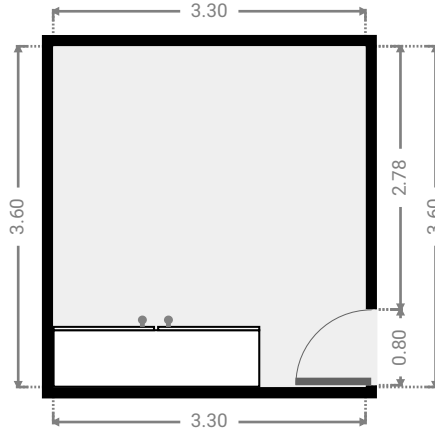
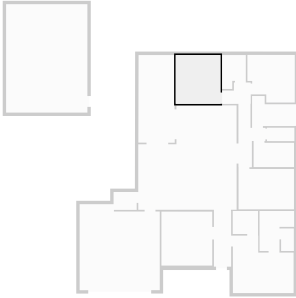
WIDTH: 3.49 m • LENGTH: 3.51 m
AREA: 11.08 m² • PERIMETER: 14.01 m



FLOORS: 1

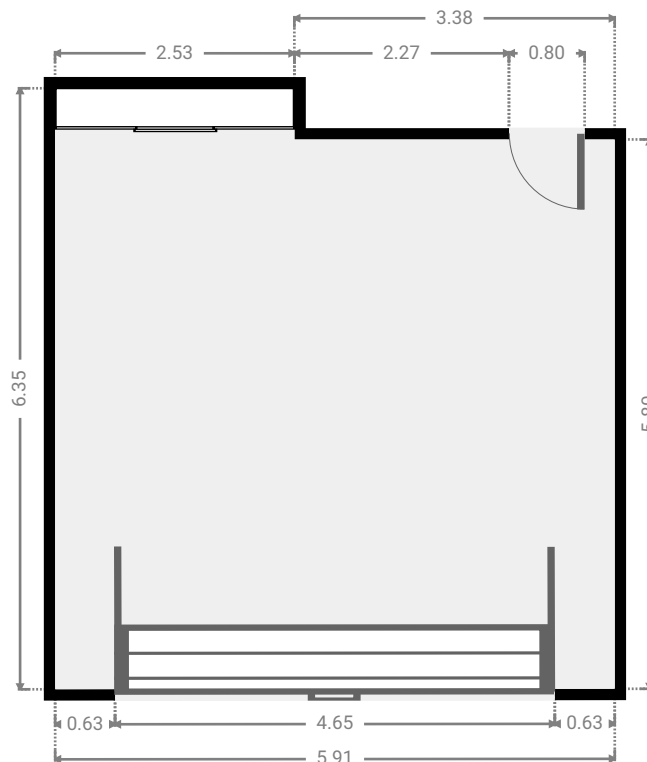
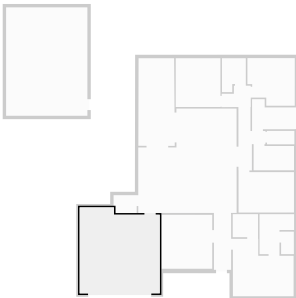
▼ **Bedroom**
Ground Floor

WIDTH: 3.30 m • LENGTH: 3.60 m
AREA: 11.88 m² • PERIMETER: 13.80 m



▼ **Garage**
Ground Floor

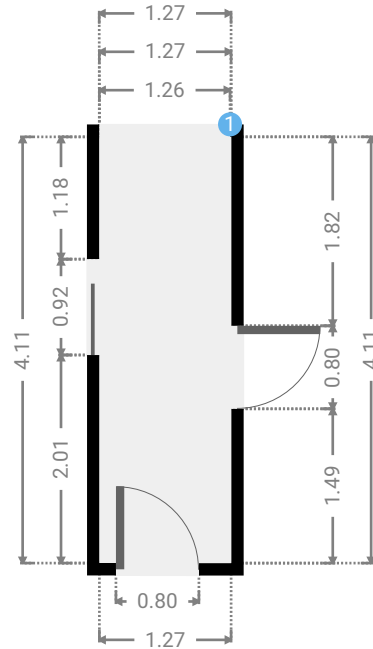
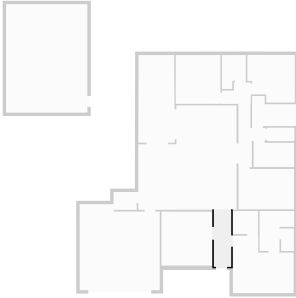
WIDTH: 5.91 m • LENGTH: 6.35 m
AREA: 35.70 m² • PERIMETER: 24.52 m



FLOORS: 1

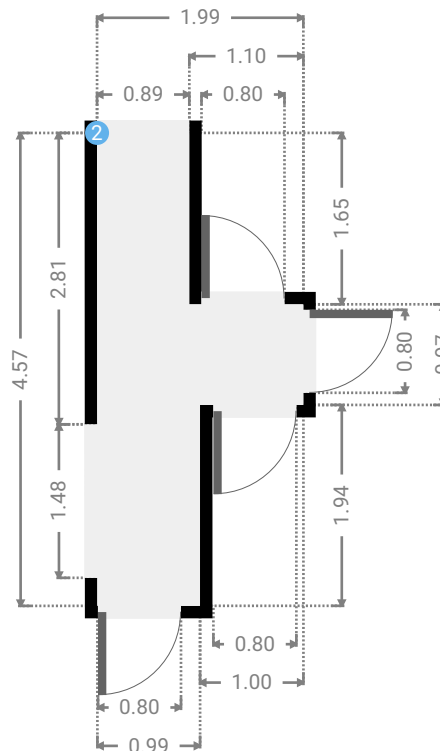
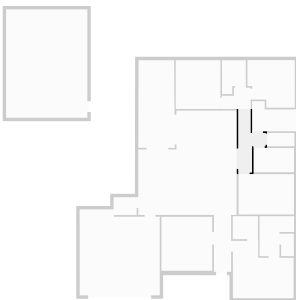
▼ Hall
Ground Floor

WIDTH: 1.27 m • LENGTH: 4.11 m
AREA: 5.22 m² • PERIMETER: 10.76 m



▼ Hall
Ground Floor

WIDTH: 1.99 m • LENGTH: 4.56 m
AREA: 5.32 m² • PERIMETER: 13.09 m



▼ **Hall/**Ground Floor

2 **OPENING**

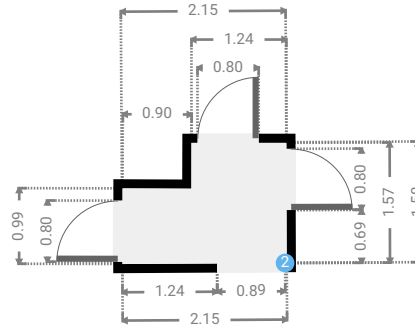
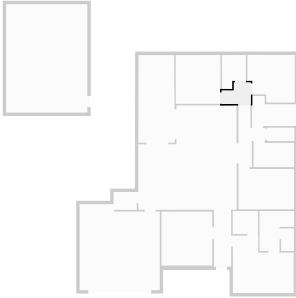
Height
0.00 m



FLOORS: 1

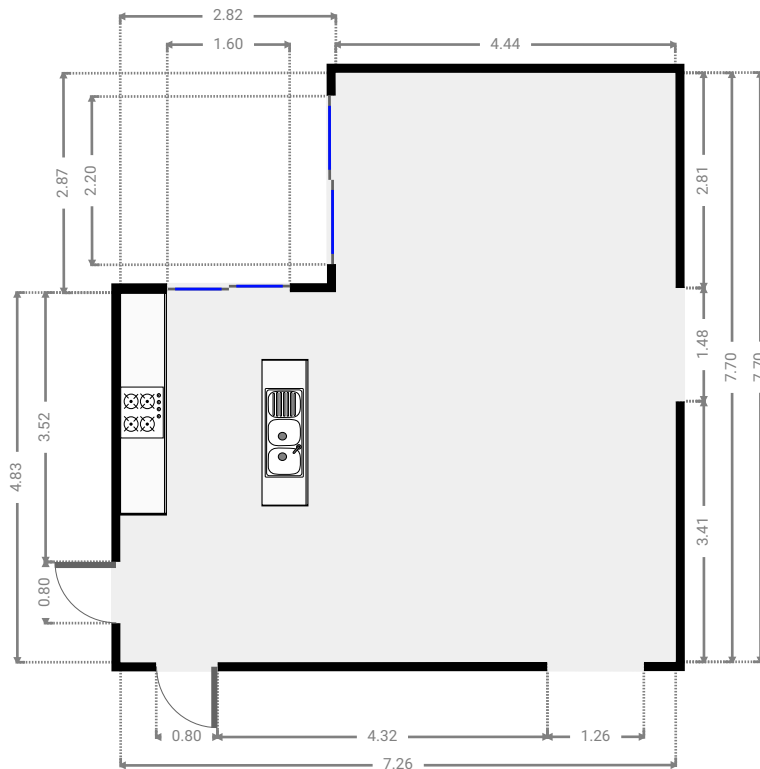
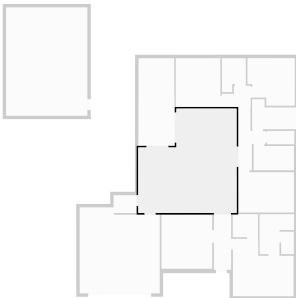
▼ **Hall**
Ground Floor

WIDTH: 2.15 m • LENGTH: 1.58 m
AREA: 2.85 m² • PERIMETER: 7.45 m



▼ **Kitchen**
Ground Floor

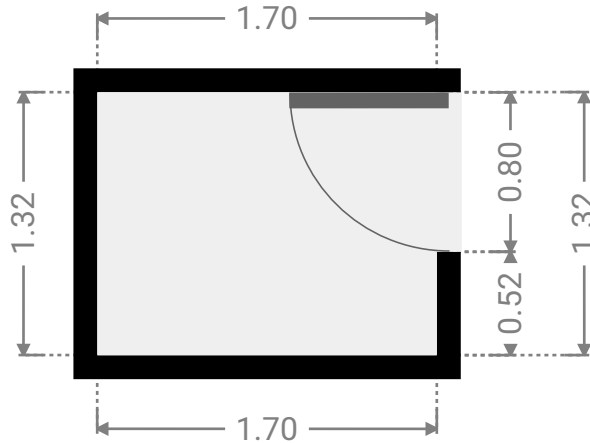
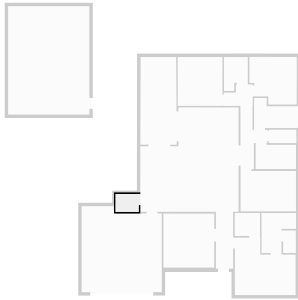
WIDTH: 7.26 m • LENGTH: 7.70 m
AREA: 47.81 m² • PERIMETER: 29.92 m



FLOORS: 1

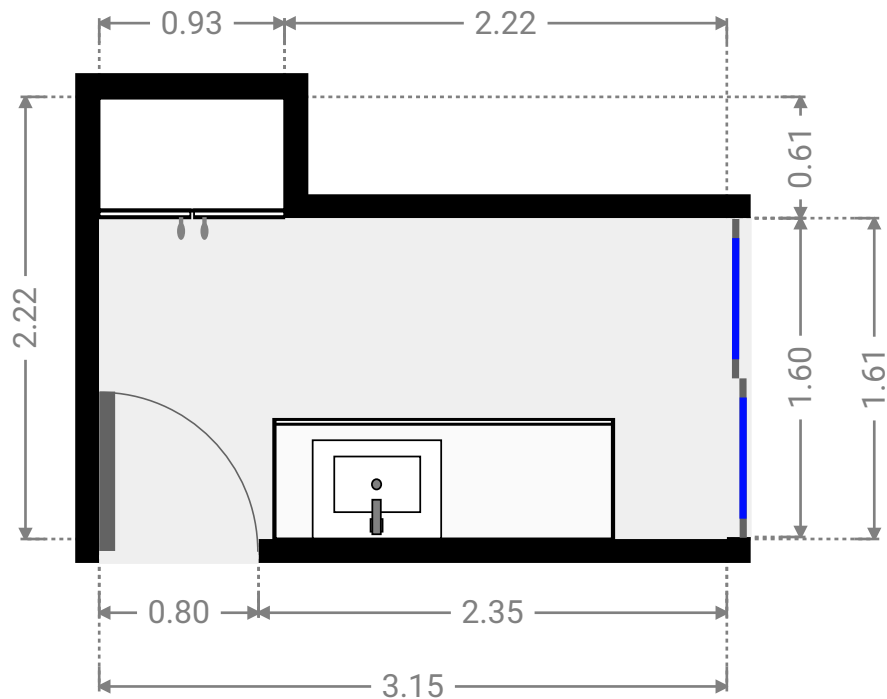
▼ **Closet**
Ground Floor

WIDTH: 1.70 m • LENGTH: 1.32 m
AREA: 2.25 m² • PERIMETER: 6.05 m



▼ **Laundry Room**
Ground Floor

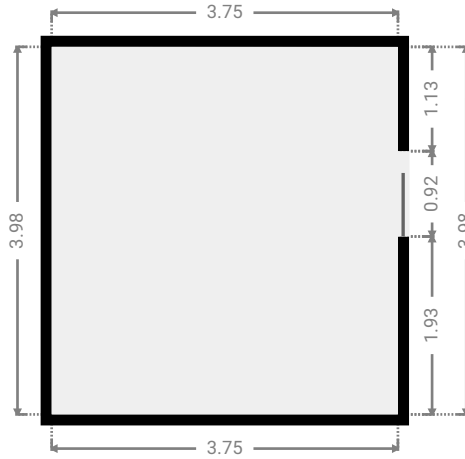
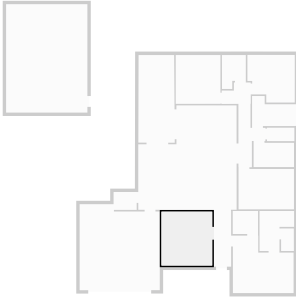
WIDTH: 3.15 m • LENGTH: 2.22 m
AREA: 5.64 m² • PERIMETER: 10.74 m



FLOORS: 1

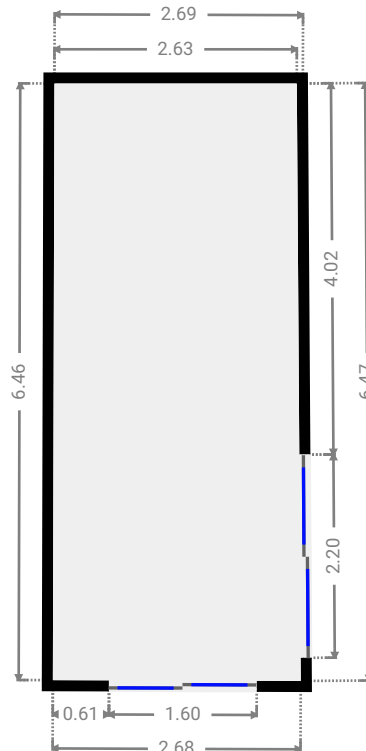
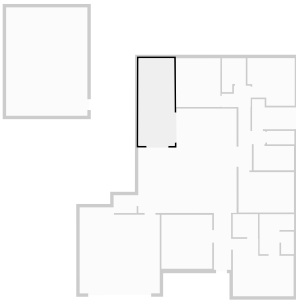
▼ **Living Room**
Ground Floor

WIDTH: 3.75 m • LENGTH: 3.98 m
AREA: 14.93 m² • PERIMETER: 15.46 m



▼ **Other**
Ground Floor

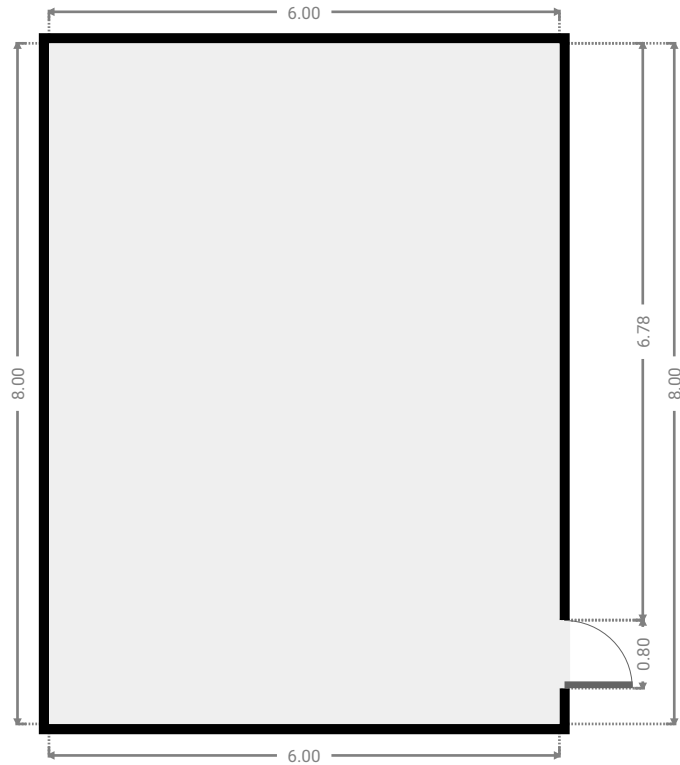
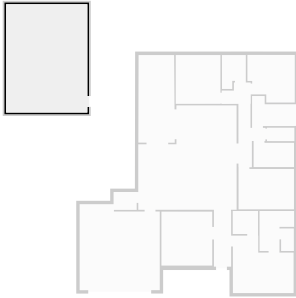
WIDTH: 2.69 m • LENGTH: 6.47 m
AREA: 17.17 m² • PERIMETER: 18.24 m



FLOORS: 1

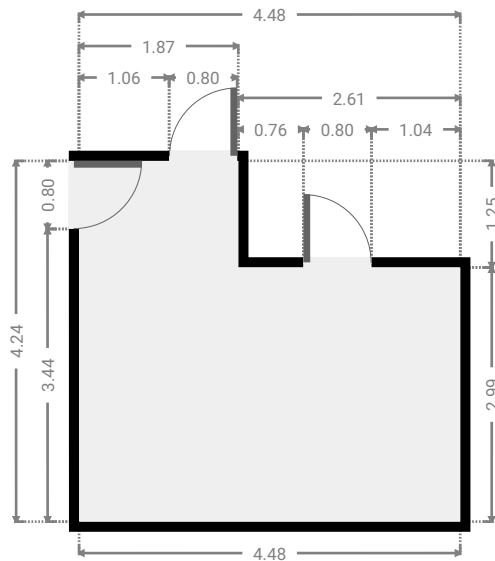
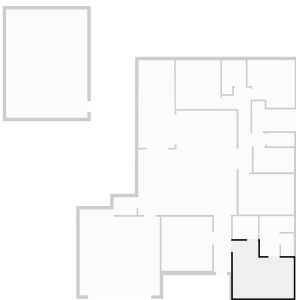
▼ **Other**
Ground Floor

WIDTH: 6.00 m • LENGTH: 8.00 m
AREA: 48.00 m² • PERIMETER: 28.00 m



▼ **Primary Bedroom**
Ground Floor

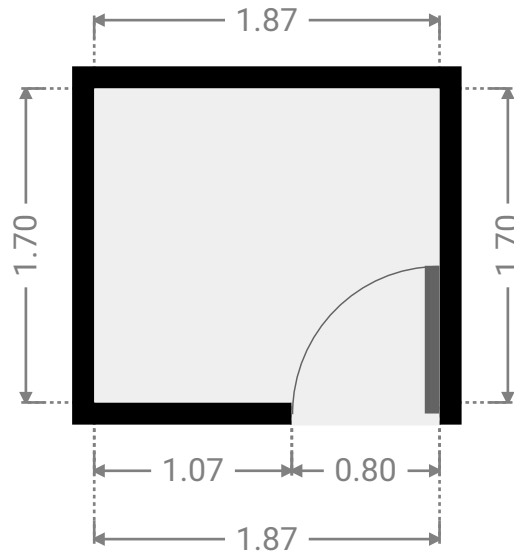
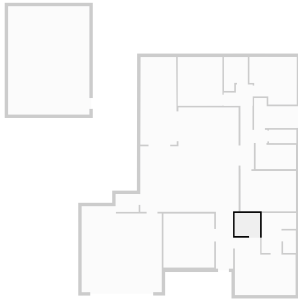
WIDTH: 4.48 m • LENGTH: 4.24 m
AREA: 15.73 m² • PERIMETER: 17.44 m



FLOORS: 1

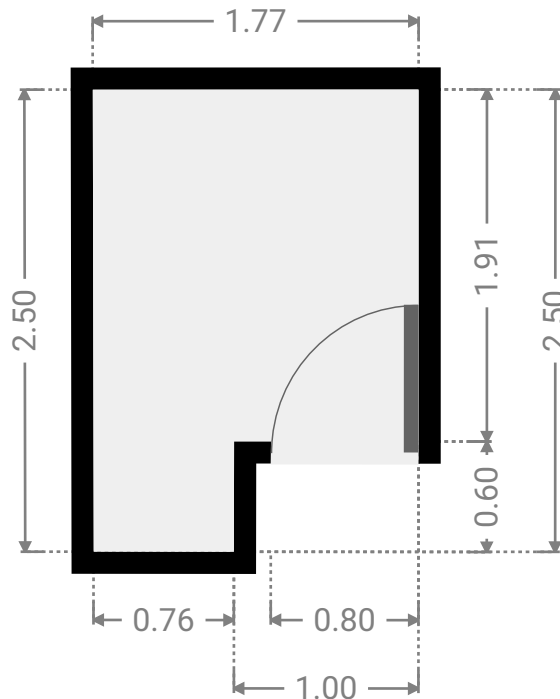
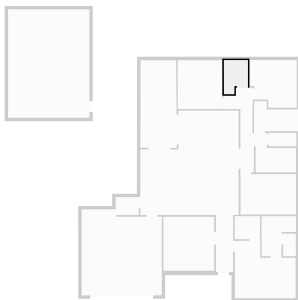
▼ **Closet**
Ground Floor

WIDTH: 1.87 m • LENGTH: 1.70 m
AREA: 3.18 m² • PERIMETER: 7.14 m



▼ **Study**
Ground Floor

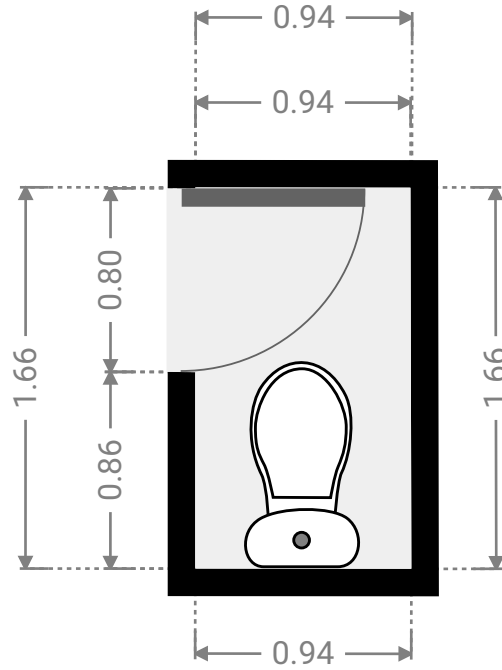
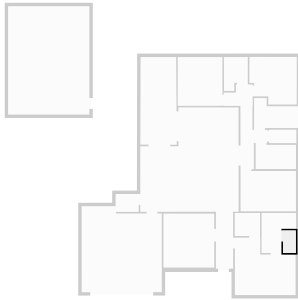
WIDTH: 1.77 m • LENGTH: 2.50 m
AREA: 3.81 m² • PERIMETER: 8.53 m



FLOORS: 1

▼ Toilet
Ground Floor

WIDTH: 0.94 m • LENGTH: 1.66 m
AREA: 1.56 m² • PERIMETER: 5.20 m



▼ Toilet
Ground Floor

WIDTH: 2.02 m • LENGTH: 0.99 m
AREA: 2.00 m² • PERIMETER: 6.02 m

