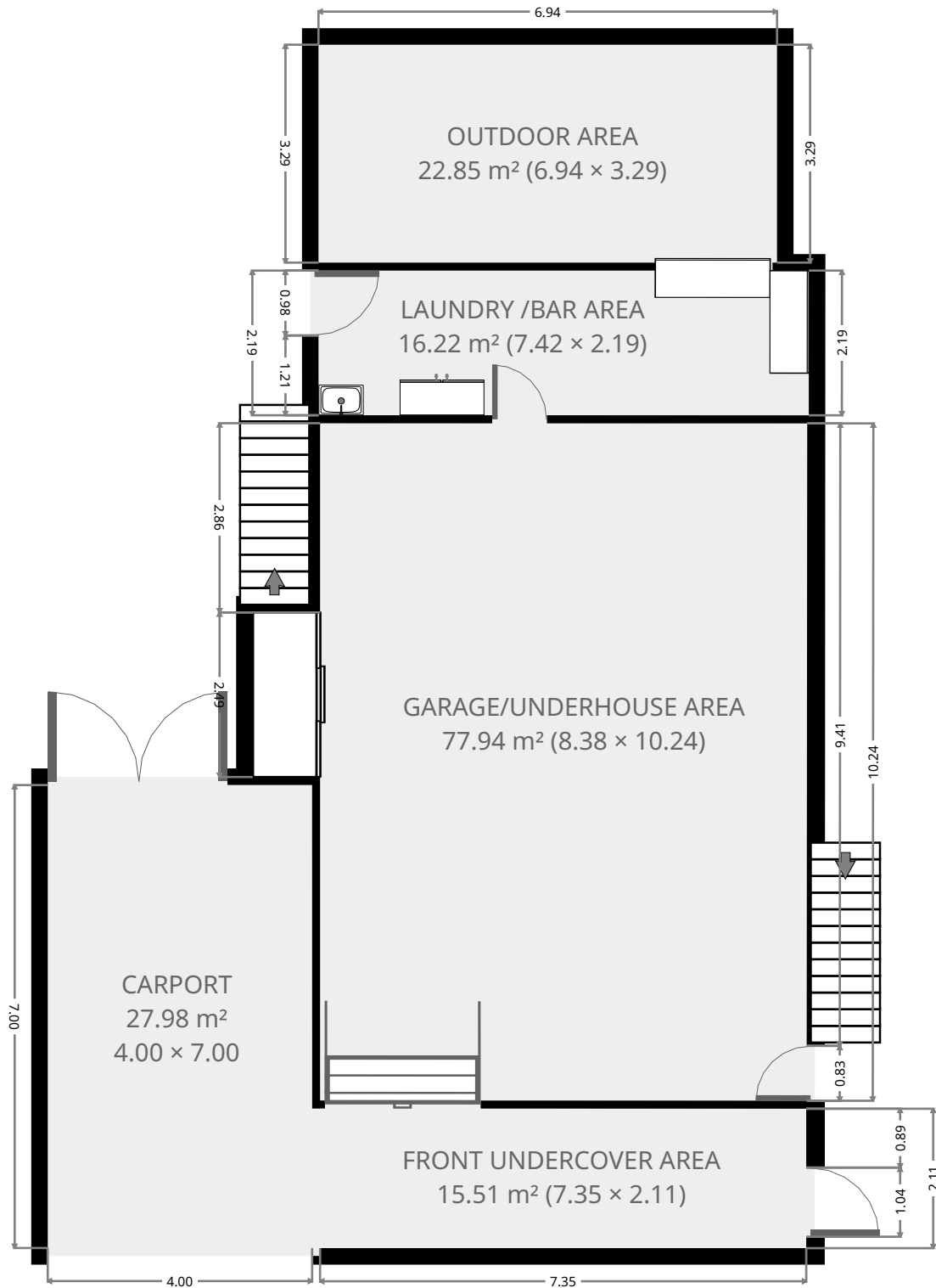


421 Berserker Street

Ground Floor



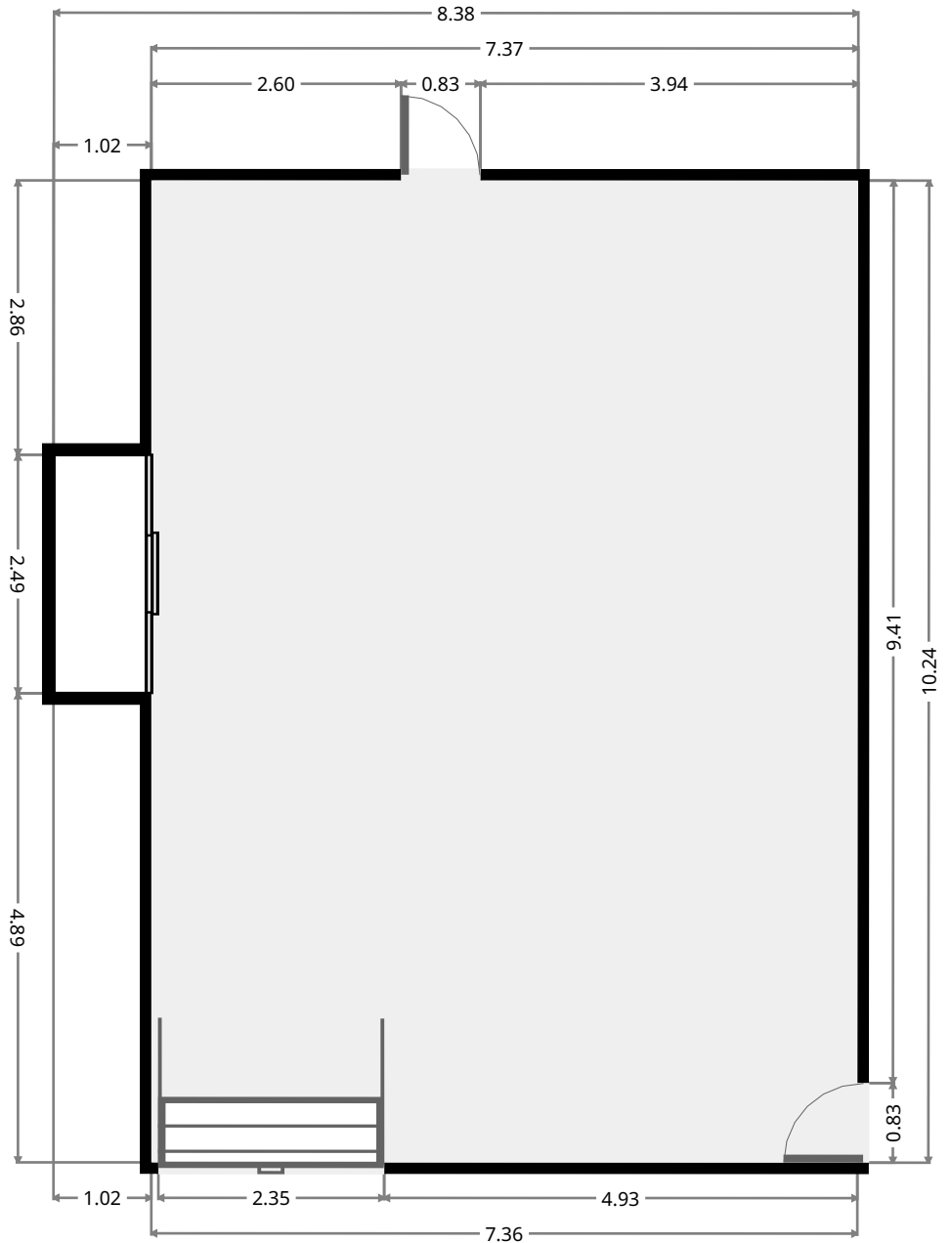
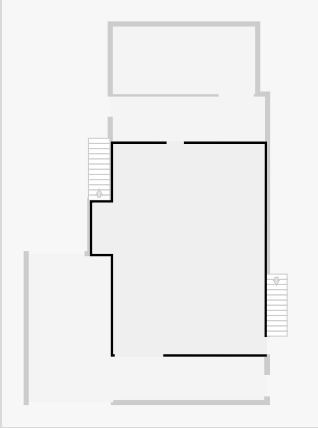
THIS FLOORPLAN IS PROVIDED WITHOUT WARRANTY OF ANY KIND. SENSOPIA DISCLAIMS ANY WARRANTY INCLUDING, WITHOUT LIMITATION, SATISFACTORY QUALITY OR ACCURACY OF DIMENSIONS.



421 Berserker Street

Garage/Underhouse Area

Width: 8.38 m
Length: 10.24 m
Area: 77.94 m²
Perimeter: 37.25 m



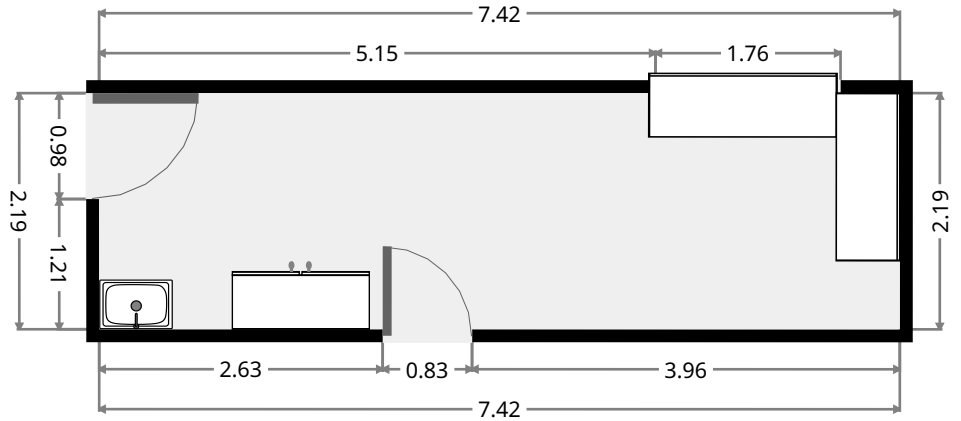
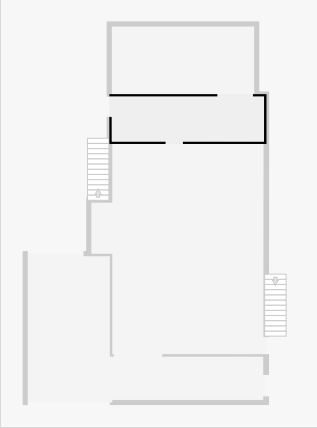
THIS FLOORPLAN IS PROVIDED WITHOUT WARRANTY OF ANY KIND. SENSOPIA DISCLAIMS ANY WARRANTY INCLUDING, WITHOUT LIMITATION, SATISFACTORY QUALITY OR ACCURACY OF DIMENSIONS.



421 Berserker Street

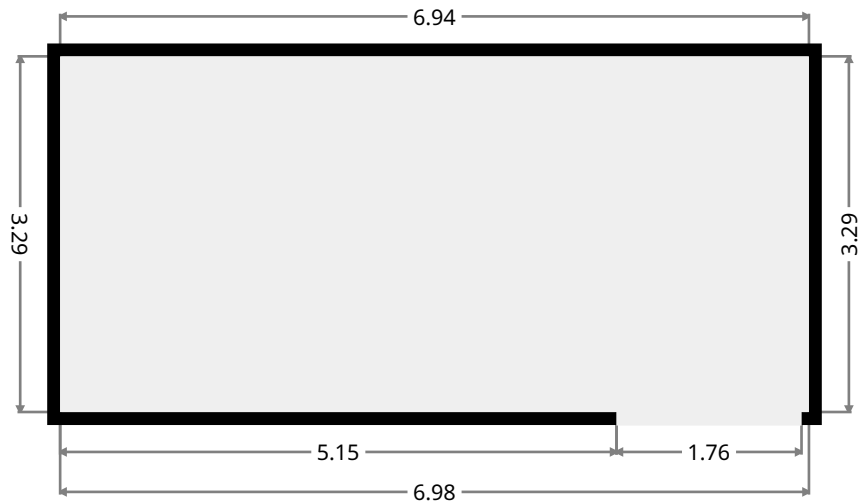
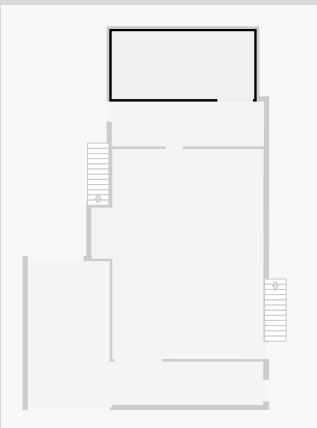
Laundry /Bar Area

Width: 2.19 m
Length: 7.42 m
Area: 16.22 m²
Perimeter: 19.21 m



Outdoor Area

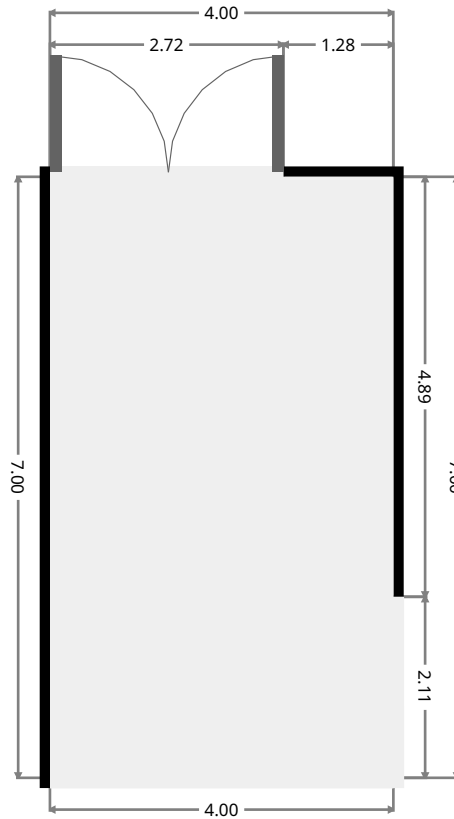
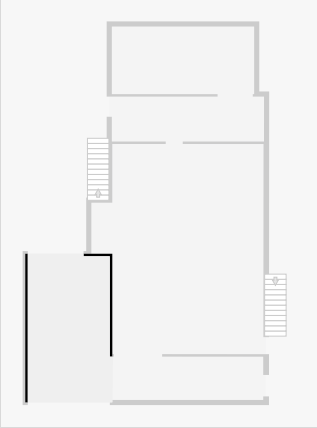
Width: 3.29 m
Length: 6.94 m
Area: 22.85 m²
Perimeter: 20.46 m



421 Berserker Street

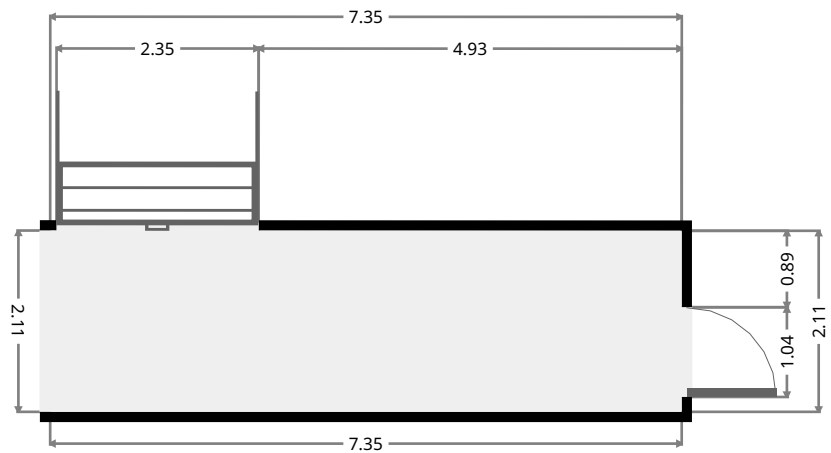
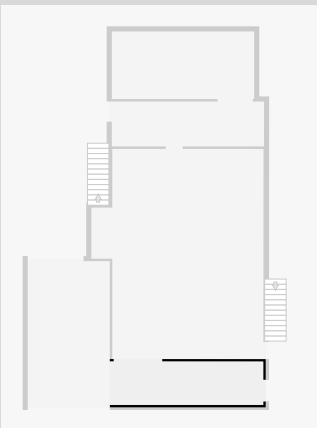
Carport

Width: 4.00 m
 Length: 7.00 m
 Area: 27.98 m²
 Perimeter: 21.99 m

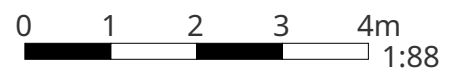


Front UnderCover Area

Width: 2.11 m
 Length: 7.35 m
 Area: 15.51 m²
 Perimeter: 18.93 m

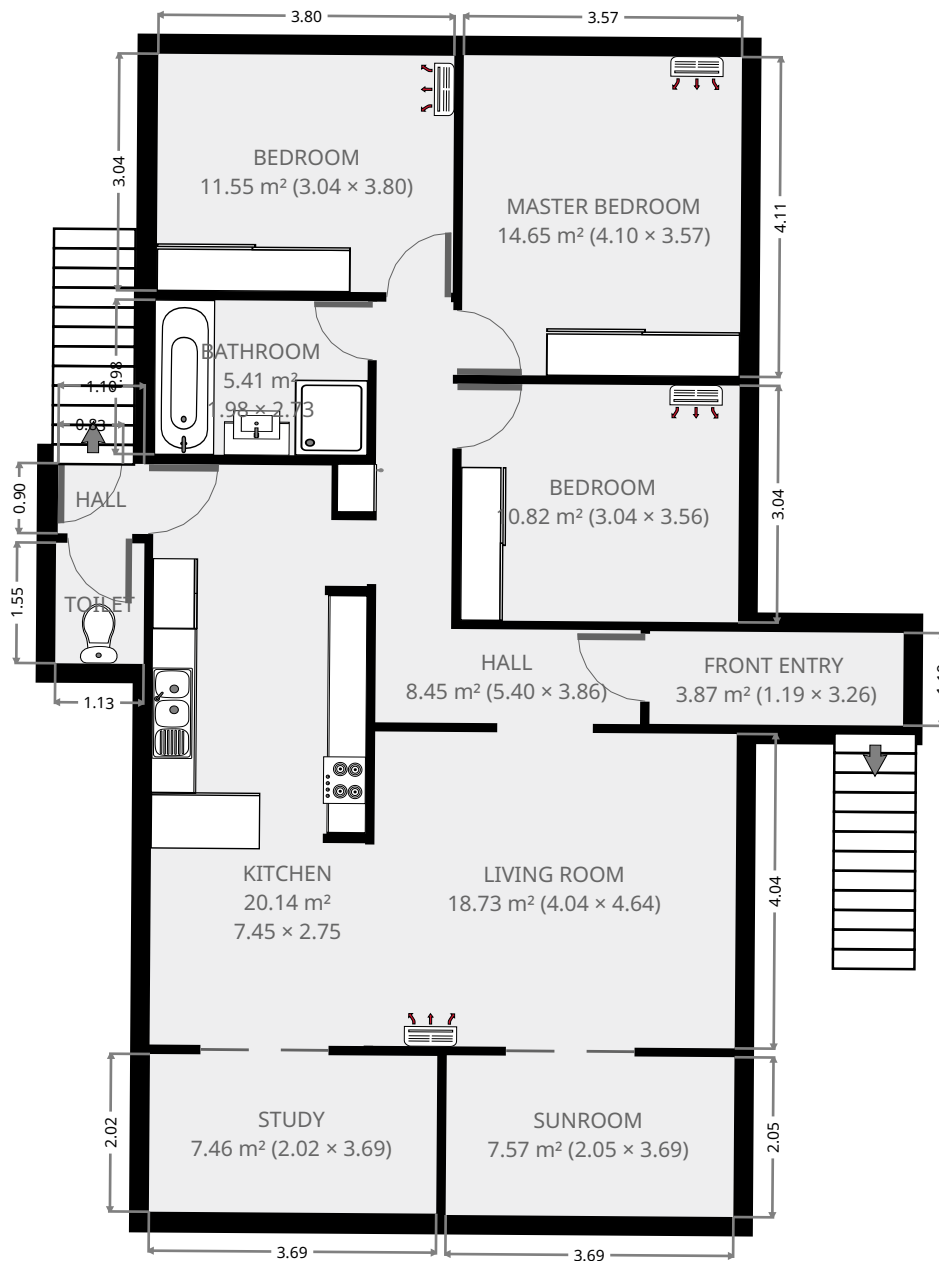


THIS FLOORPLAN IS PROVIDED WITHOUT WARRANTY OF ANY KIND. SENSOPIA DISCLAIMS ANY WARRANTY INCLUDING, WITHOUT LIMITATION, SATISFACTORY QUALITY OR ACCURACY OF DIMENSIONS.



421 Berserker Street

1st Floor



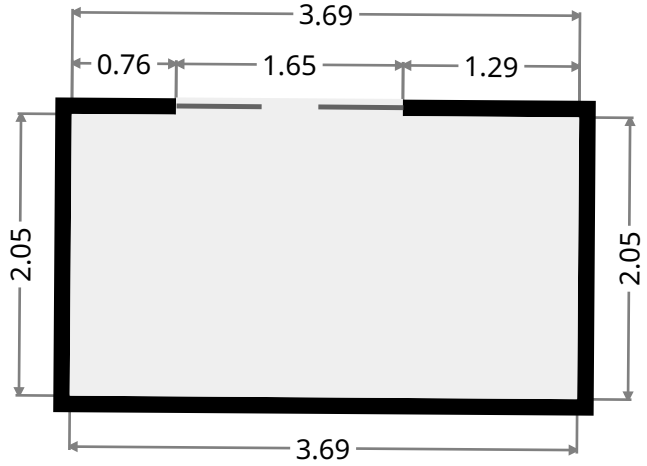
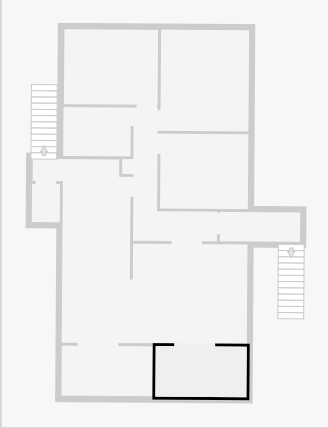
THIS FLOORPLAN IS PROVIDED WITHOUT WARRANTY OF ANY KIND. SENSOPIA DISCLAIMS ANY WARRANTY INCLUDING, WITHOUT LIMITATION, SATISFACTORY QUALITY OR ACCURACY OF DIMENSIONS.



421 Berserker Street

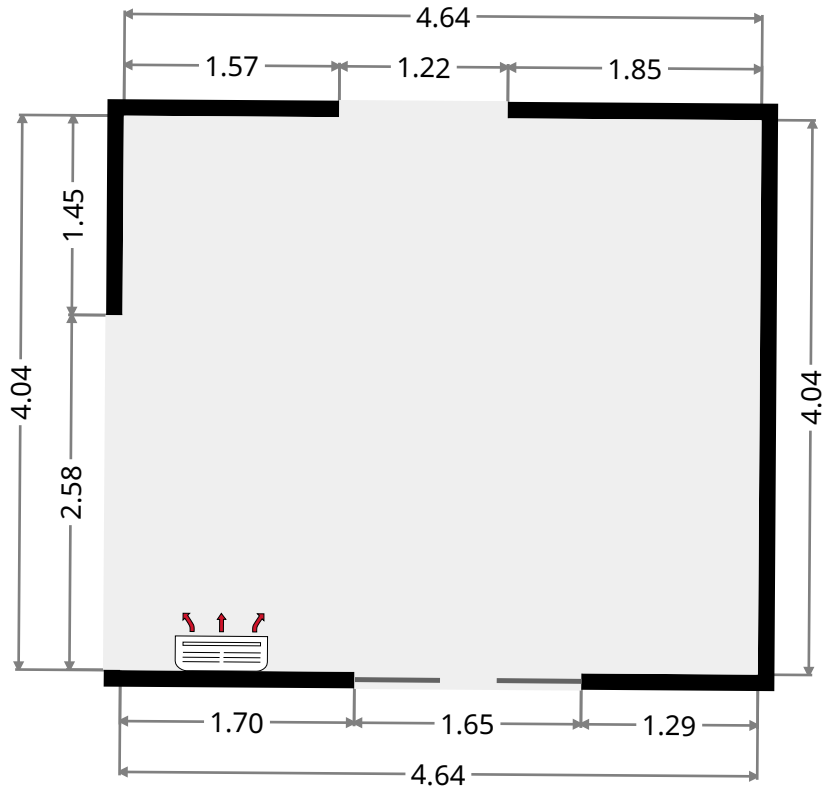
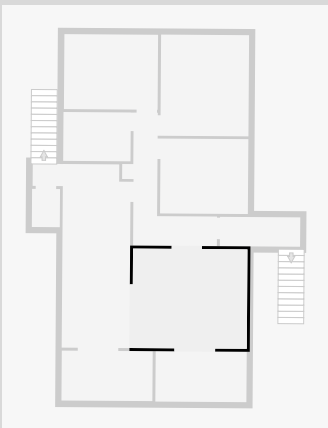
Sunroom

Width: 2.05 m
Length: 3.69 m
Area: 7.57 m²
Perimeter: 11.49 m

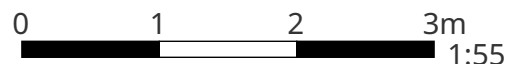


Living Room

Width: 4.04 m
Length: 4.64 m
Area: 18.73 m²
Perimeter: 17.35 m



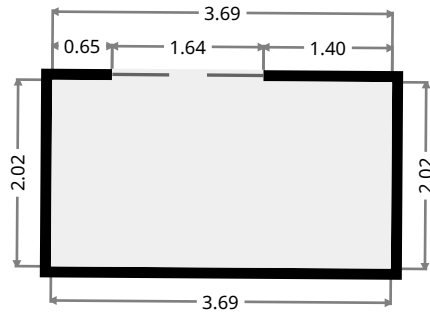
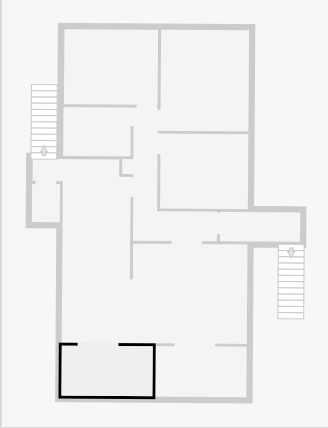
THIS FLOORPLAN IS PROVIDED WITHOUT WARRANTY OF ANY KIND. SENSOPIA DISCLAIMS ANY WARRANTY INCLUDING, WITHOUT LIMITATION, SATISFACTORY QUALITY OR ACCURACY OF DIMENSIONS.



421 Berserker Street

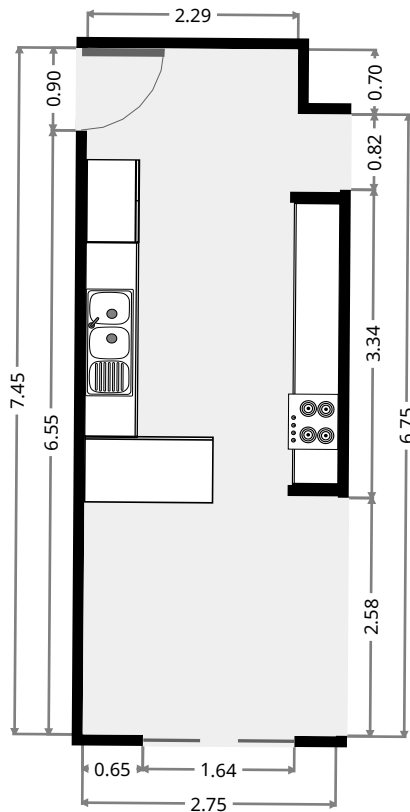
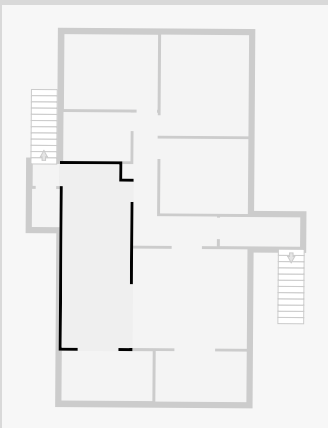
Study

Width: 2.02 m
Length: 3.69 m
Area: 7.46 m²
Perimeter: 11.42 m



Kitchen

Width: 2.75 m
Length: 7.45 m
Area: 20.14 m²
Perimeter: 20.39 m

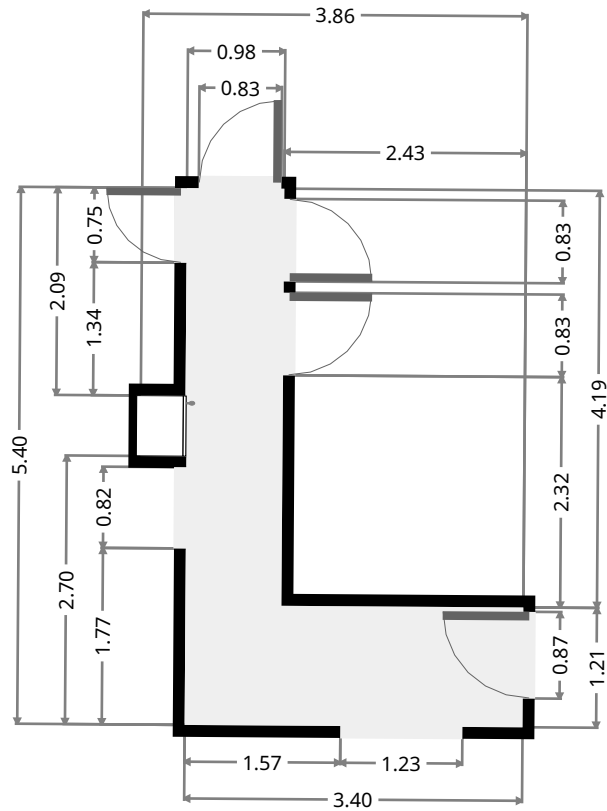
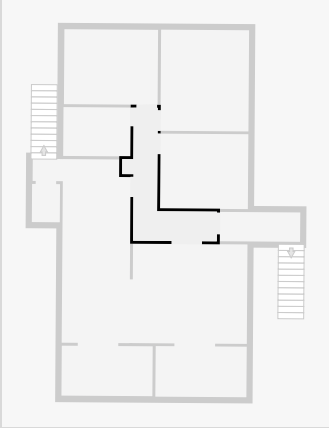


THIS FLOORPLAN IS PROVIDED WITHOUT WARRANTY OF ANY KIND. SENSOPIA DISCLAIMS ANY WARRANTY INCLUDING, WITHOUT LIMITATION, SATISFACTORY QUALITY OR ACCURACY OF DIMENSIONS.

421 Berserker Street

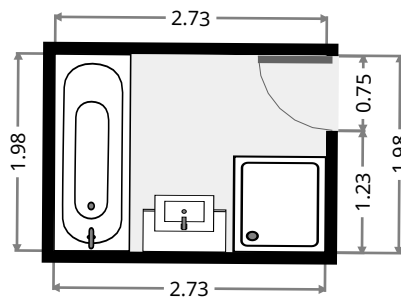
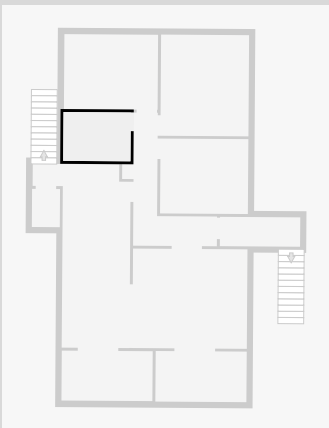
Hall

Width: 3.86 m
 Length: 5.40 m
 Area: 8.45 m²
 Perimeter: 18.52 m



Bathroom

Width: 1.98 m
 Length: 2.73 m
 Area: 5.41 m²
 Perimeter: 9.42 m



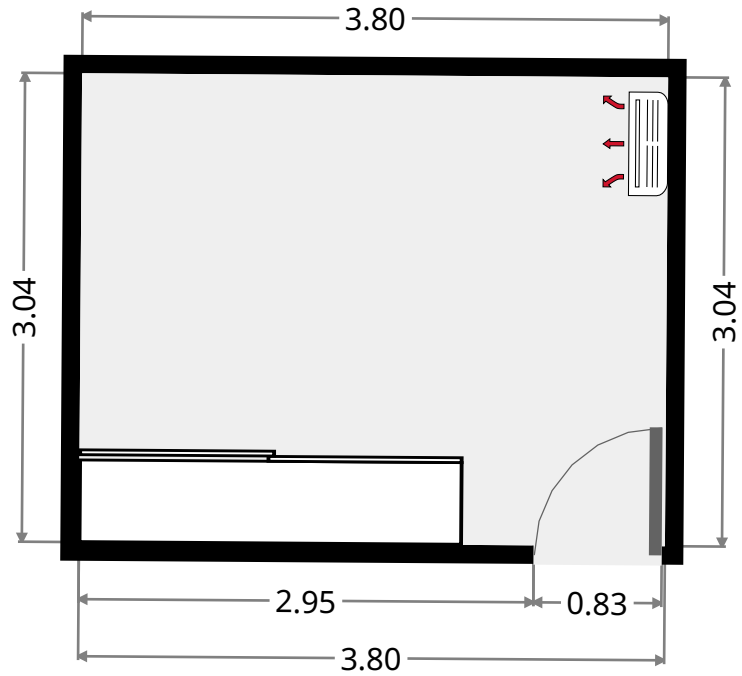
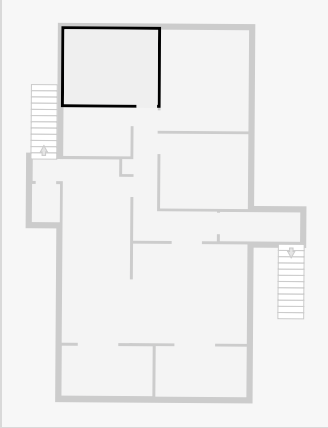
THIS FLOORPLAN IS PROVIDED WITHOUT WARRANTY OF ANY KIND. SENSOPIA DISCLAIMS ANY WARRANTY INCLUDING, WITHOUT LIMITATION, SATISFACTORY QUALITY OR ACCURACY OF DIMENSIONS.



421 Berserker Street

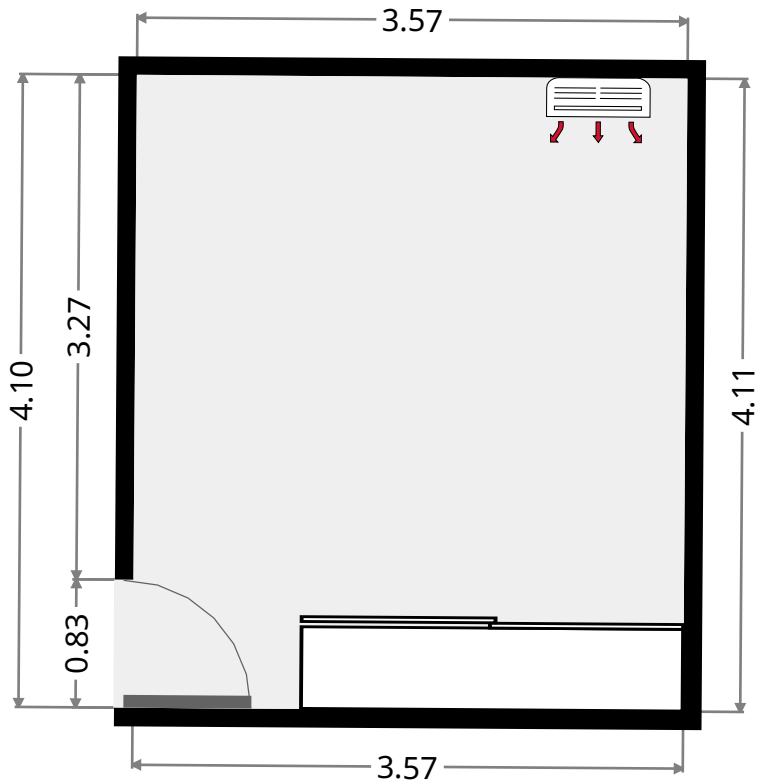
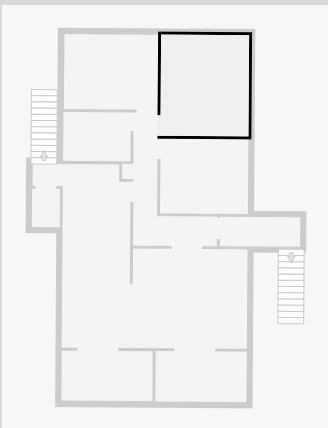
Bedroom

Width: 3.04 m
Length: 3.80 m
Area: 11.55 m²
Perimeter: 13.68 m



Master Bedroom

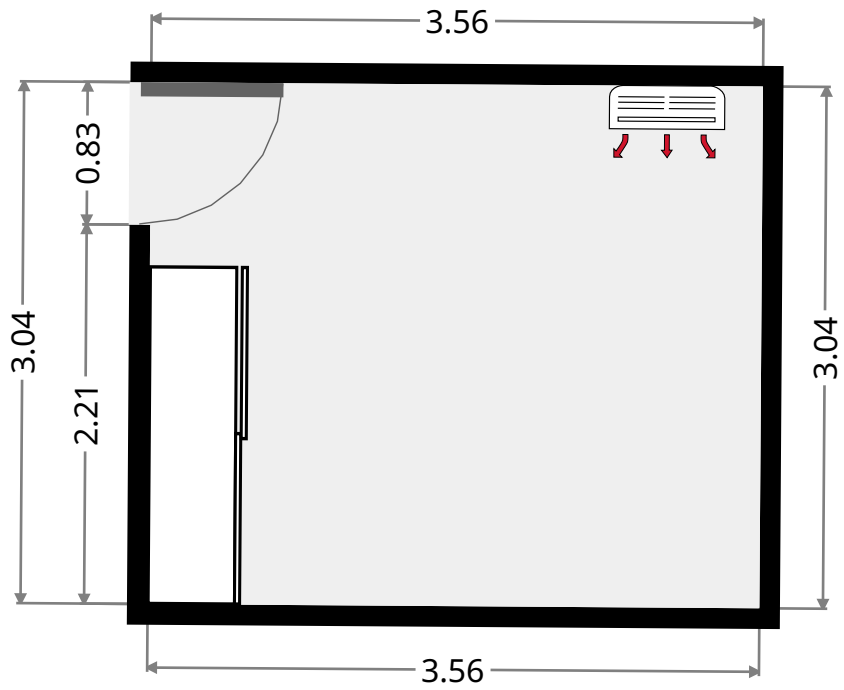
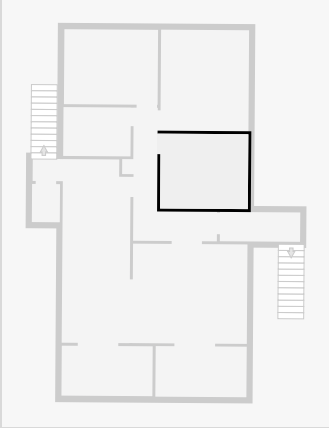
Width: 3.57 m
Length: 4.10 m
Area: 14.65 m²
Perimeter: 15.35 m



421 Berserker Street

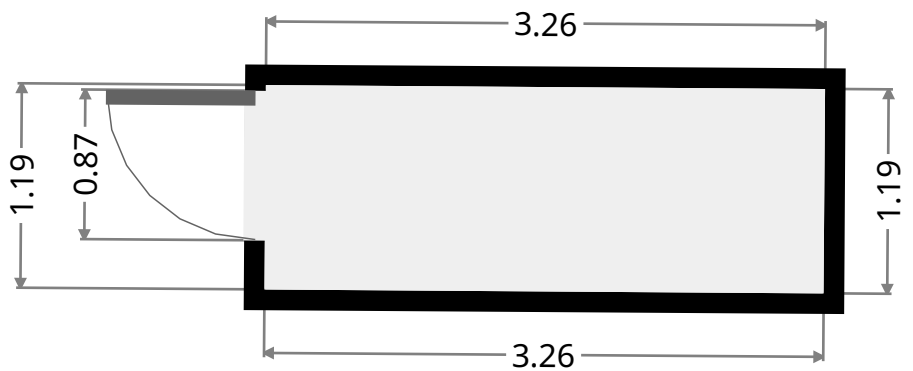
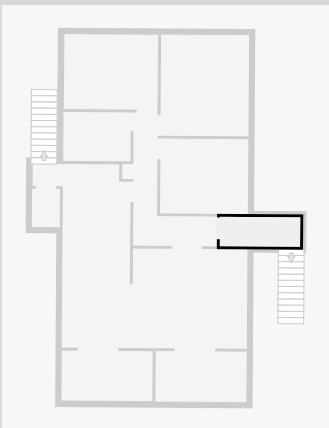
Bedroom

Width: 3.04 m
Length: 3.56 m
Area: 10.82 m²
Perimeter: 13.20 m



Front Entry

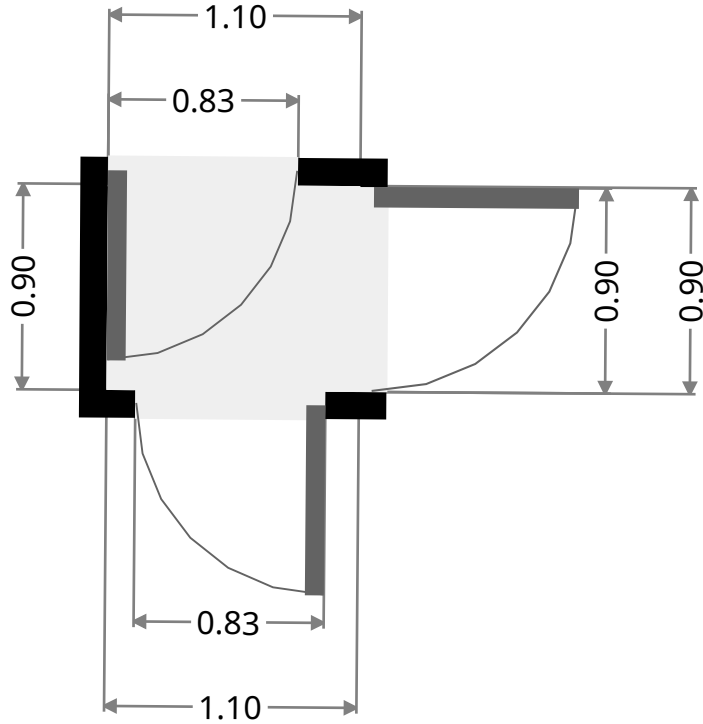
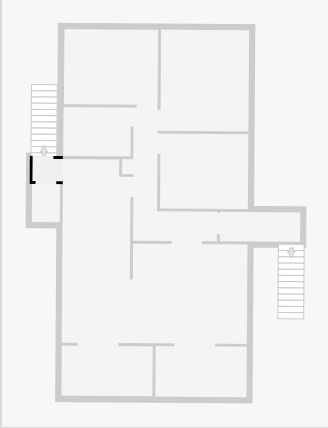
Width: 1.19 m
Length: 3.26 m
Area: 3.87 m²
Perimeter: 8.89 m



421 Berserker Street

Hall

Width: 0.90 m
Length: 1.10 m
Area: 0.99 m²
Perimeter: 4.00 m



Toilet

Width: 1.14 m
Length: 1.55 m
Area: 1.75 m²
Perimeter: 5.36 m

