

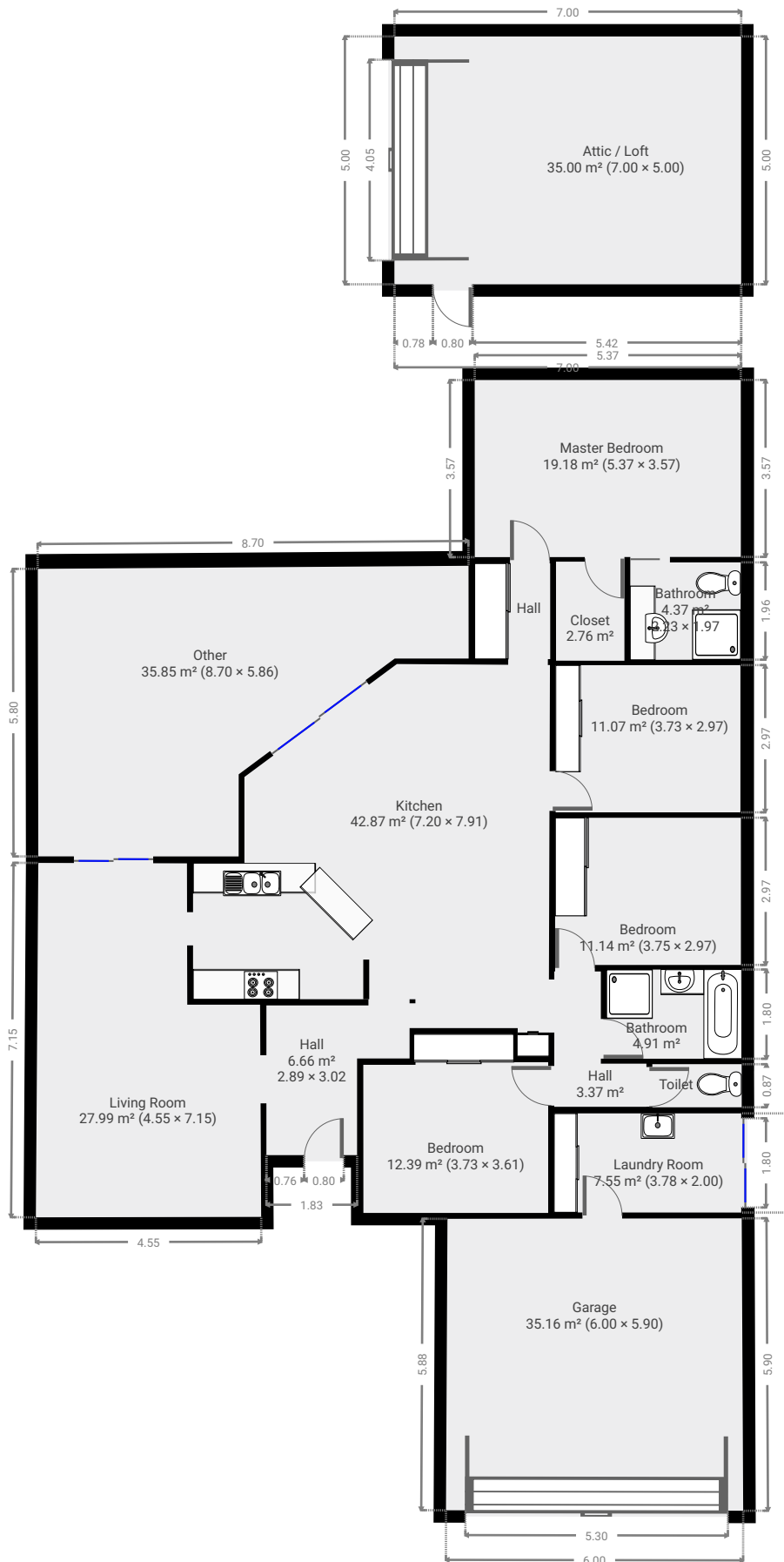
42 Jamie Crescent

SUBMITTED BY
Ray White Rockhampton Casey
stockers@cqoz.com

CREATED ON
2021-11-23

Floors
1

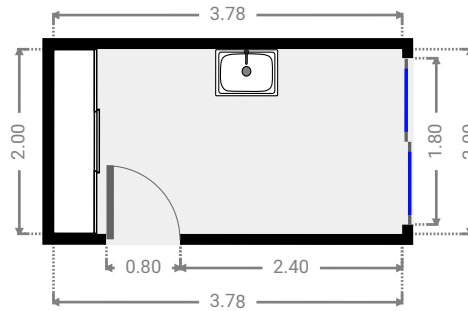
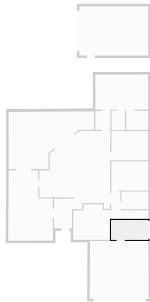
▼ Ground Floor



FLOORS: 1

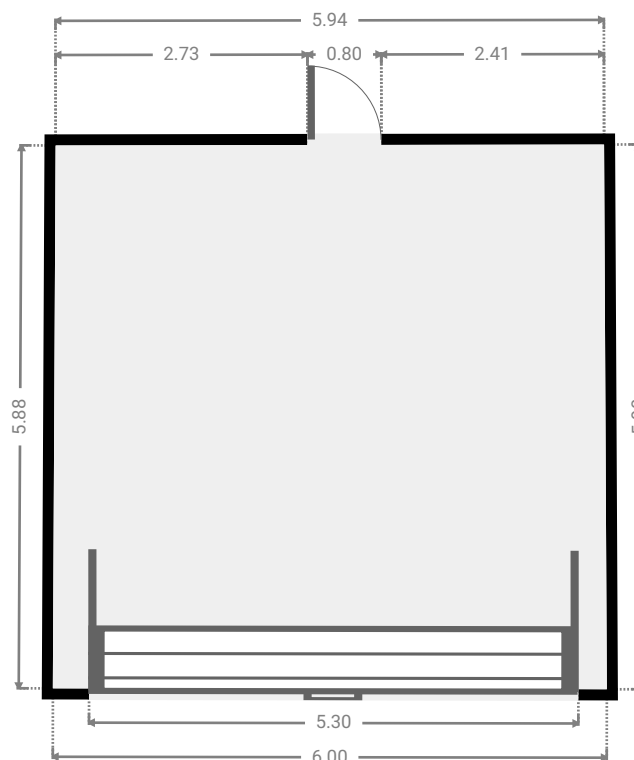
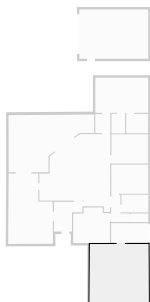
▼ Laundry Room
Ground Floor

WIDTH: 3.78 m • LENGTH: 2.00 m
AREA: 7.55 m² • PERIMETER: 11.55 m



▼ Garage
Ground Floor

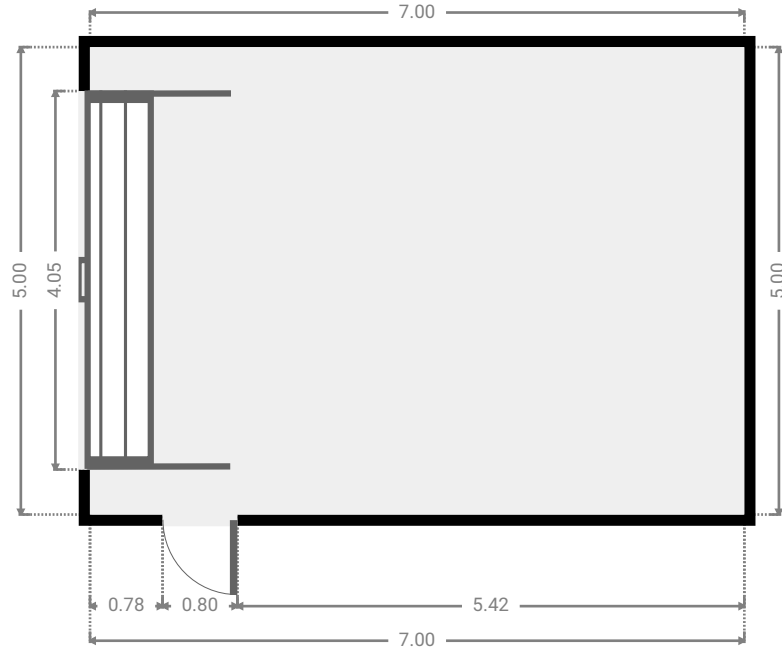
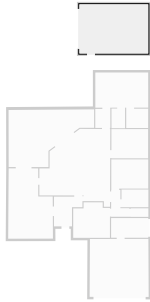
WIDTH: 6.00 m • LENGTH: 5.90 m
AREA: 35.16 m² • PERIMETER: 23.72 m



FLOORS: 1

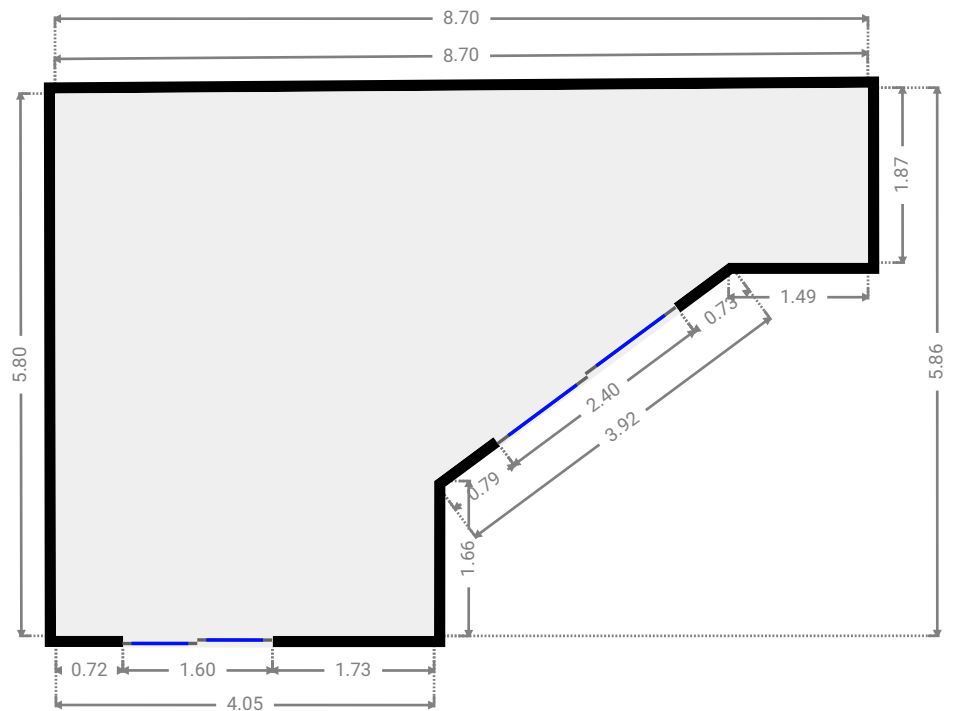
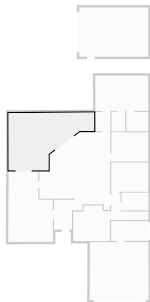
▼ Attic / Loft
Ground Floor

WIDTH: 7.00 m • LENGTH: 5.00 m
AREA: 35.00 m² • PERIMETER: 24.00 m



▼ Other
Ground Floor

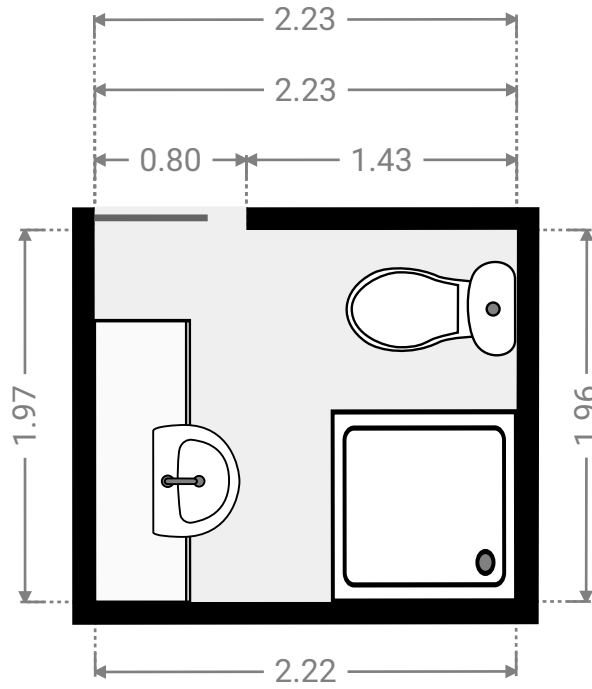
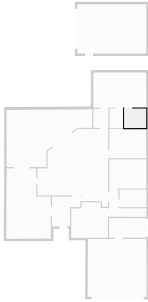
WIDTH: 8.70 m • LENGTH: 5.86 m
AREA: 35.85 m² • PERIMETER: 27.48 m



FLOORS: 1

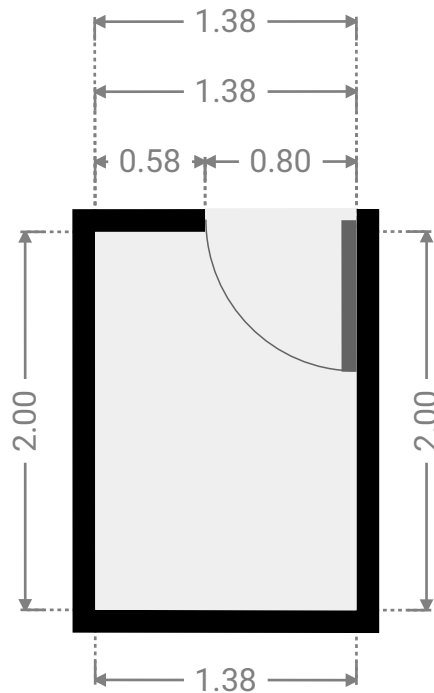
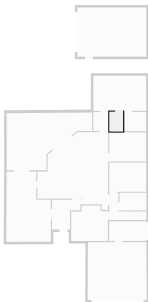
▼ Bathroom
Ground Floor

WIDTH: 2.23 m • LENGTH: 1.97 m
AREA: 4.37 m² • PERIMETER: 8.38 m



▼ Closet
Ground Floor

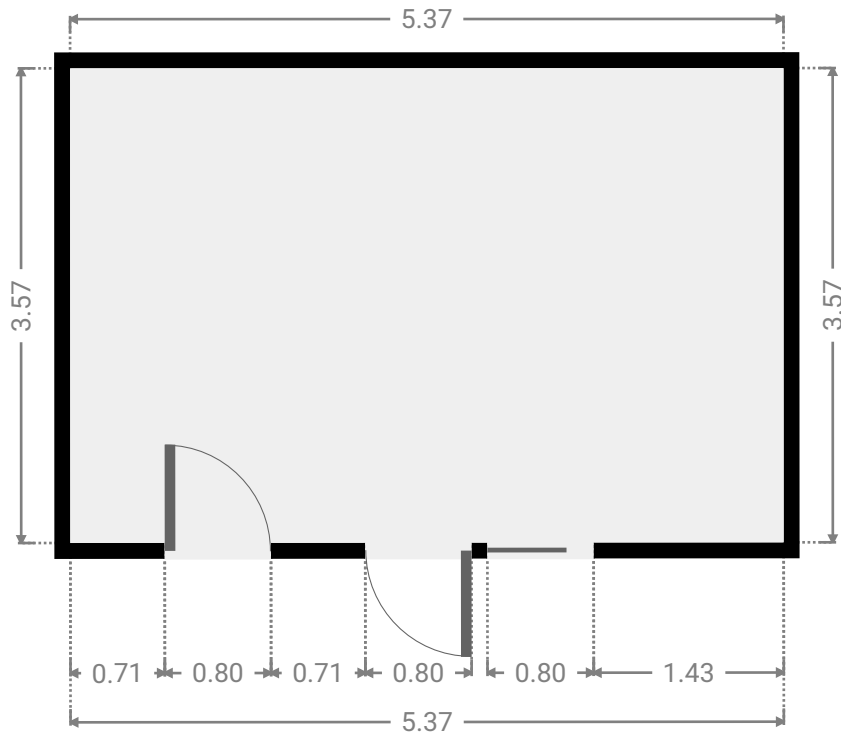
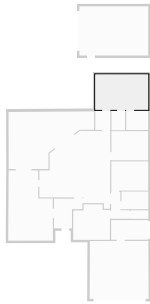
WIDTH: 1.38 m • LENGTH: 2.00 m
AREA: 2.76 m² • PERIMETER: 6.76 m



FLOORS: 1

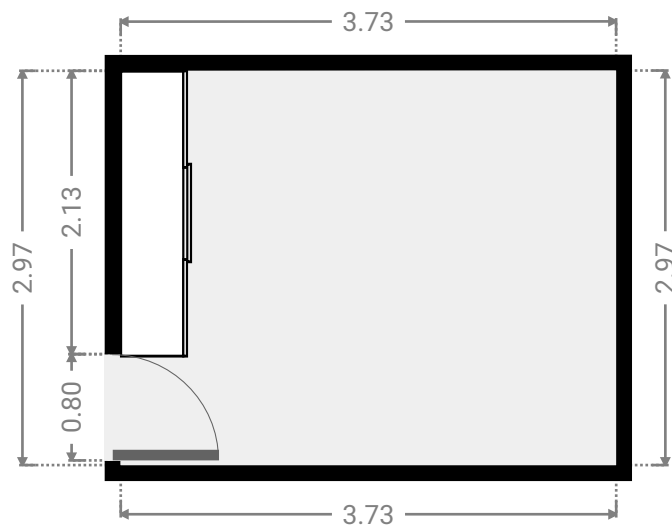
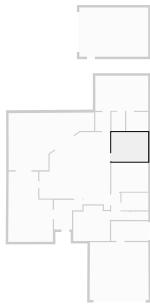
▼ Master Bedroom
Ground Floor

WIDTH: 5.37 m • LENGTH: 3.57 m
AREA: 19.18 m² • PERIMETER: 17.88 m



▼ Bedroom
Ground Floor

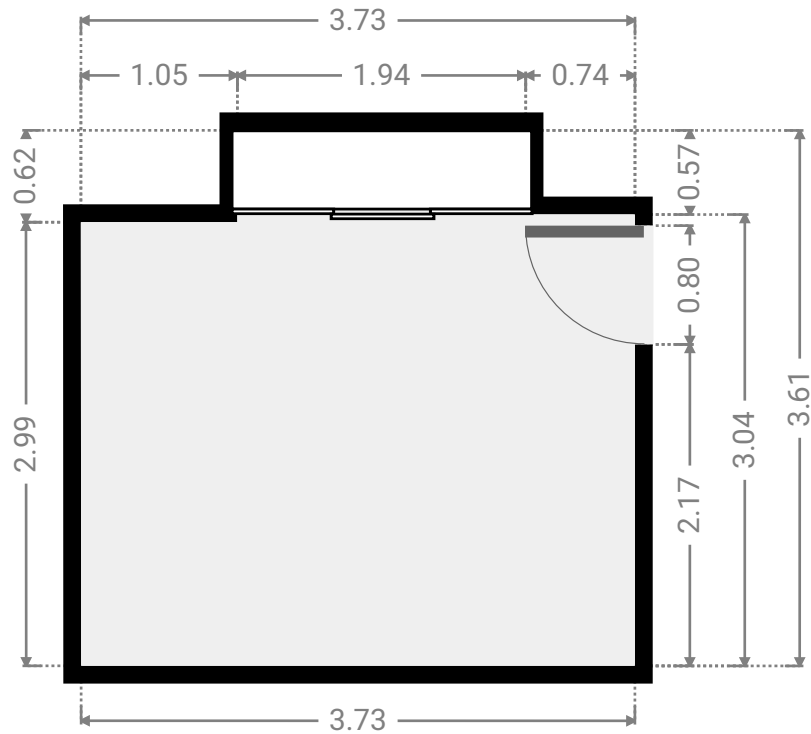
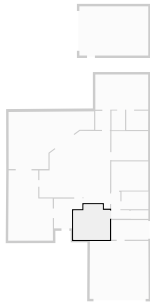
WIDTH: 3.73 m • LENGTH: 2.97 m
AREA: 11.07 m² • PERIMETER: 13.40 m



FLOORS: 1

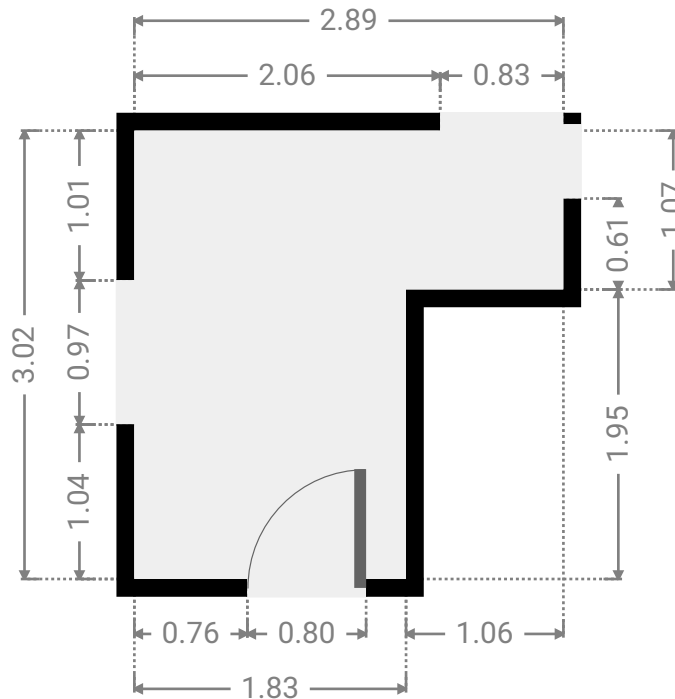
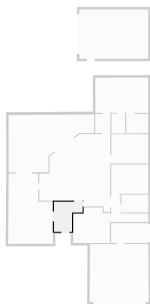
▼ **Bedroom**
Ground Floor

WIDTH: 3.73 m • LENGTH: 3.61 m
AREA: 12.39 m² • PERIMETER: 14.68 m



▼ **Hall**
Ground Floor

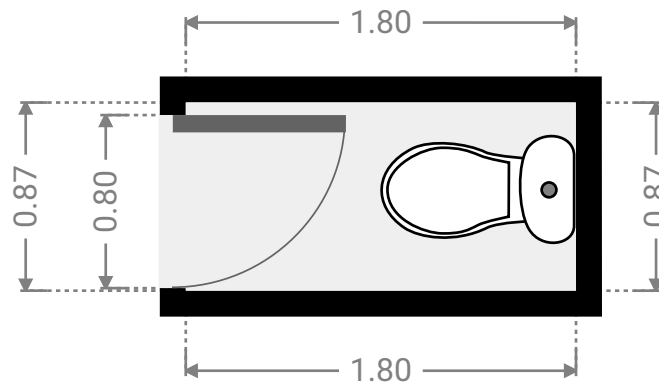
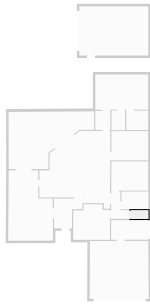
WIDTH: 2.89 m • LENGTH: 3.02 m
AREA: 6.66 m² • PERIMETER: 11.82 m



FLOORS: 1

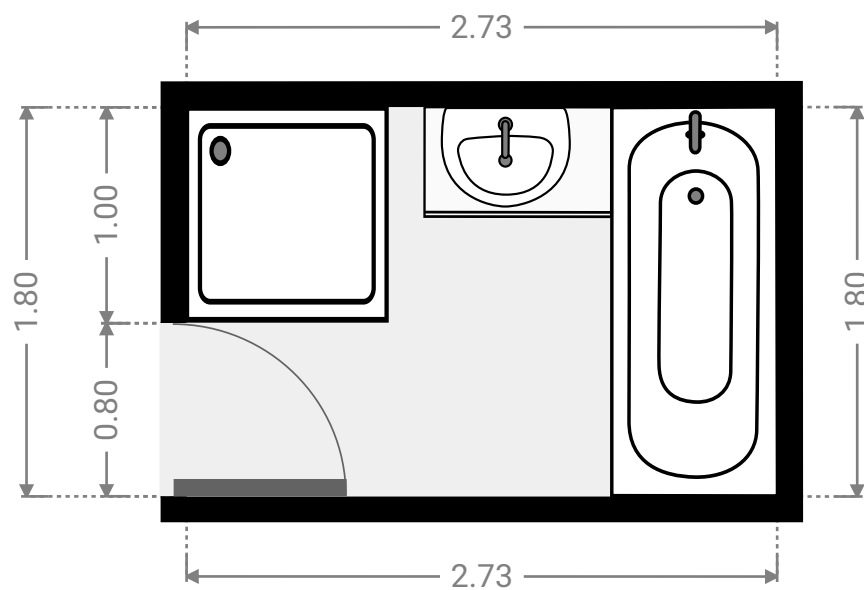
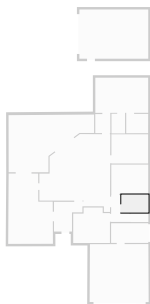
▼ Toilet
Ground Floor

WIDTH: 1.80 m • LENGTH: 0.87 m
AREA: 1.57 m² • PERIMETER: 5.35 m



▼ Bathroom
Ground Floor

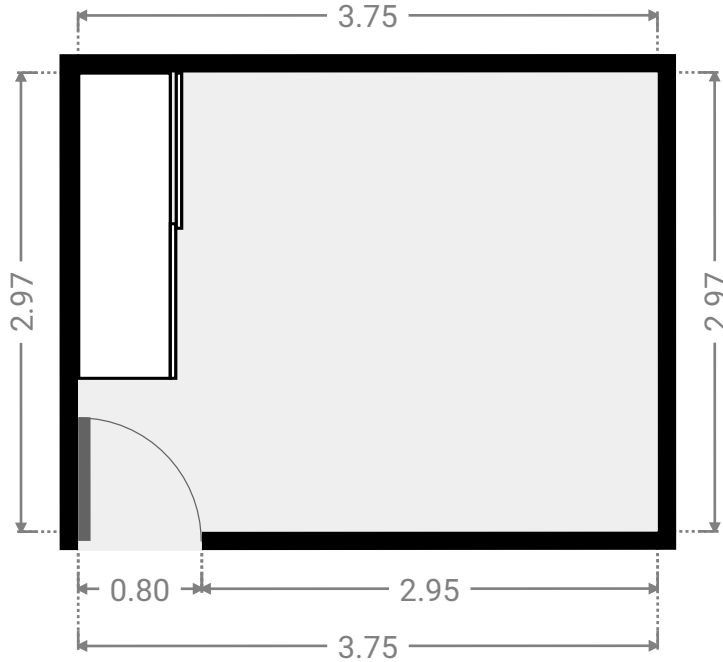
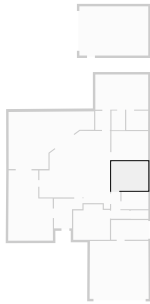
WIDTH: 2.73 m • LENGTH: 1.80 m
AREA: 4.91 m² • PERIMETER: 9.06 m



FLOORS: 1

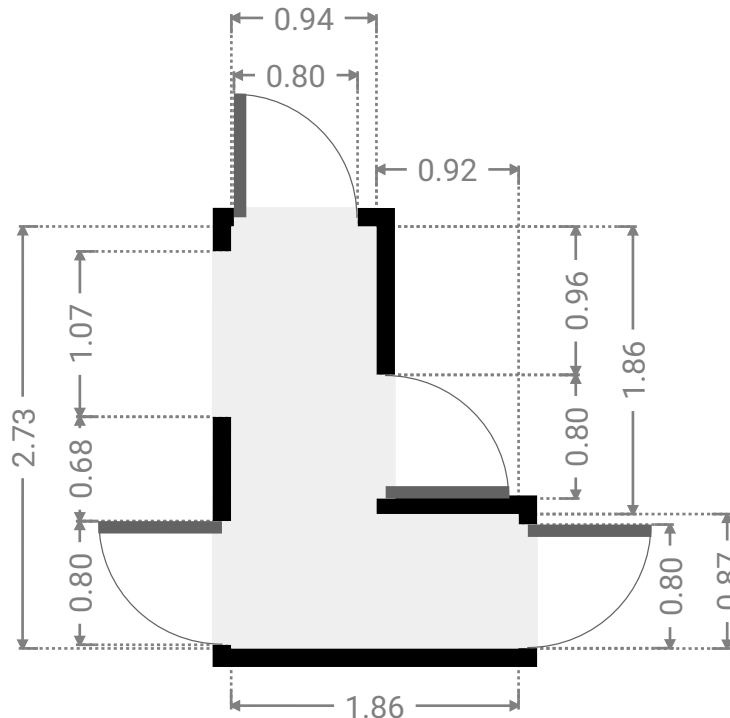
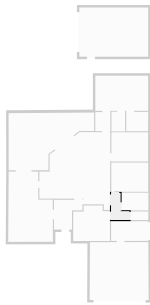
▼ Bedroom
Ground Floor

WIDTH: 3.75 m • LENGTH: 2.97 m
AREA: 11.14 m² • PERIMETER: 13.44 m



▼ Hall
Ground Floor

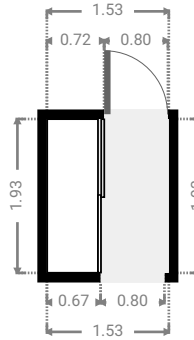
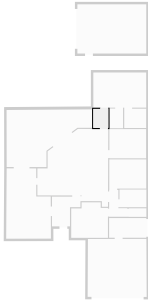
WIDTH: 1.86 m • LENGTH: 2.73 m
AREA: 3.37 m² • PERIMETER: 9.18 m



FLOORS: 1

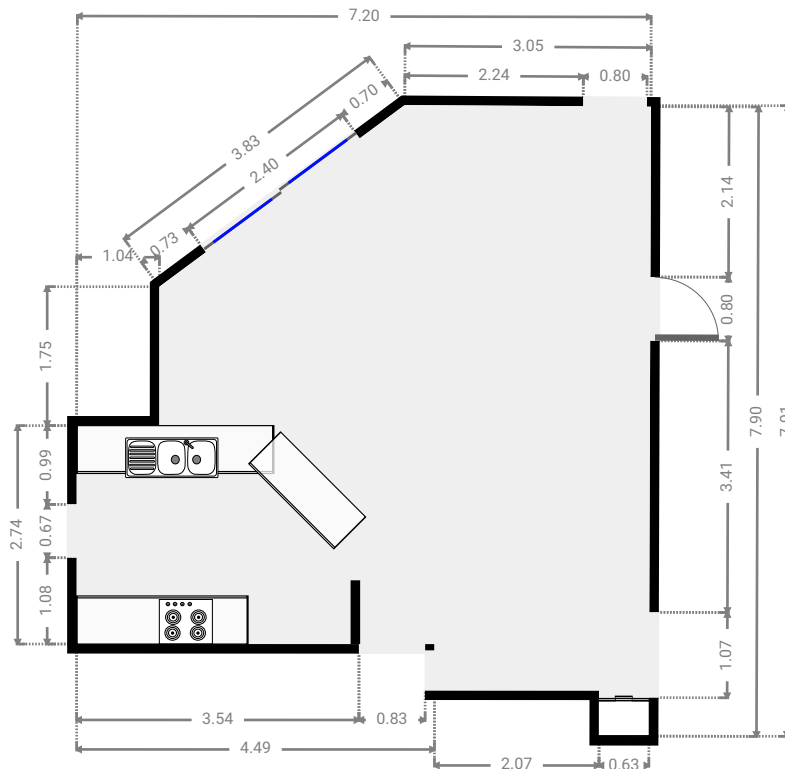
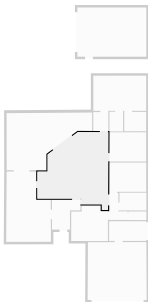
▼ Hall
Ground Floor

WIDTH: 1.53 m • LENGTH: 1.93 m
AREA: 2.95 m² • PERIMETER: 6.92 m



▼ Kitchen
Ground Floor

WIDTH: 7.20 m • LENGTH: 7.91 m
AREA: 42.87 m² • PERIMETER: 28.67 m



▼ Living Room Ground Floor

WIDTH: 4.55 m • LENGTH: 7.15 m
AREA: 27.99 m² • PERIMETER: 23.30 m

