

# 410 Rhodes Street

**SUBMITTED BY**

Ray White Rockhampton Casey  
stockers@cqoz.com

---

**CREATED ON**

2022-01-19

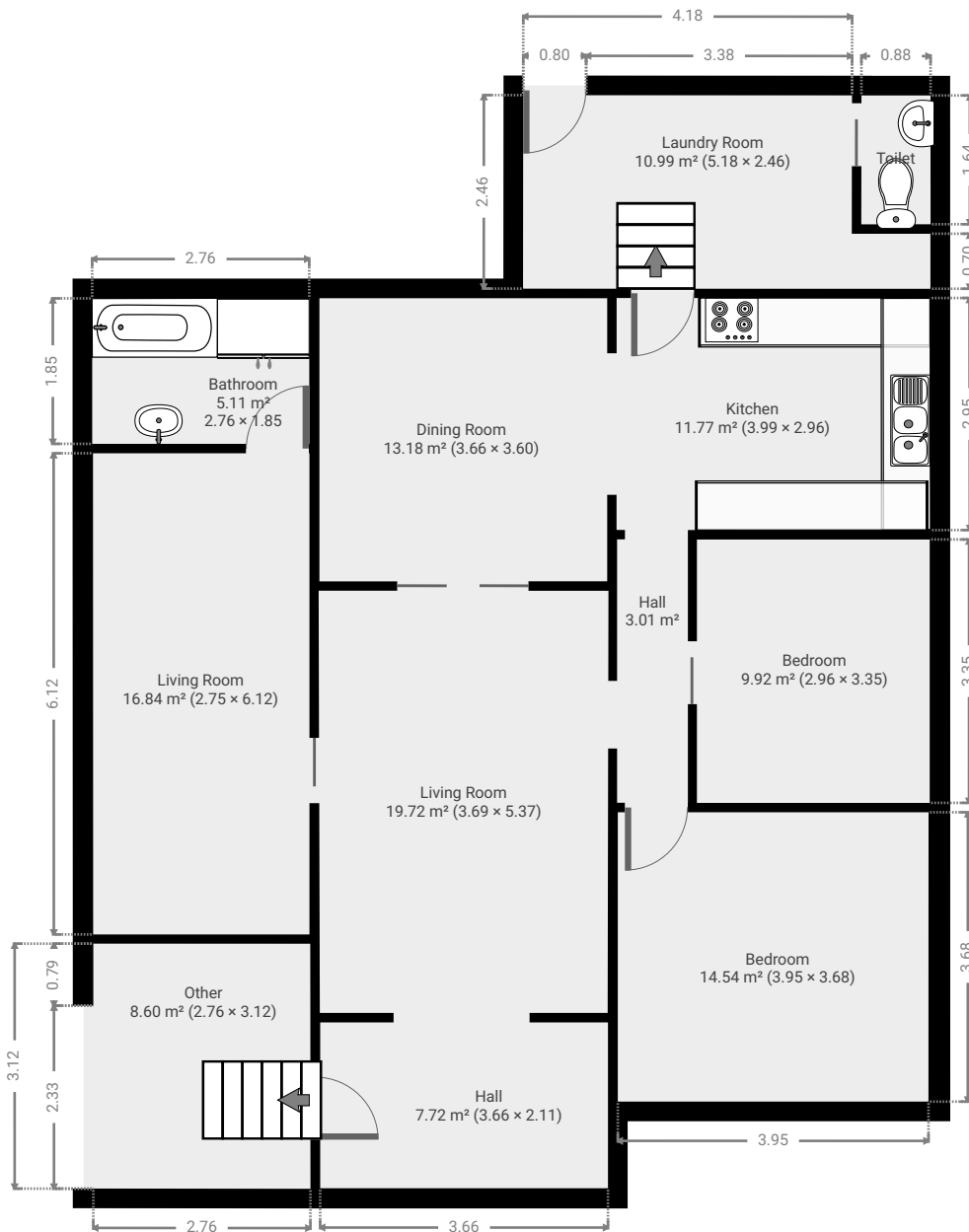
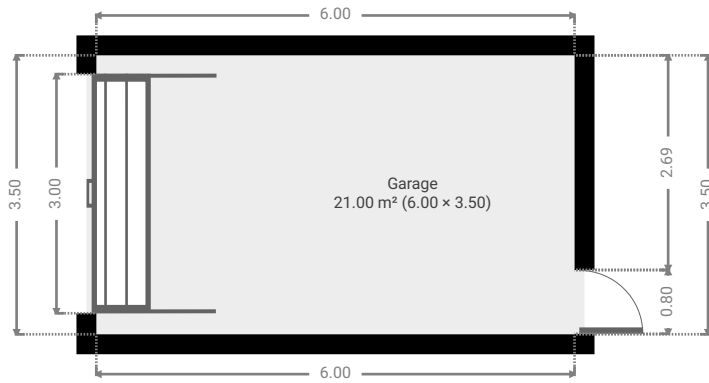
---

**Floors**

1

---

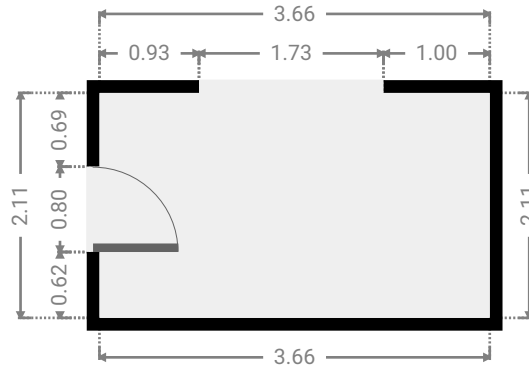
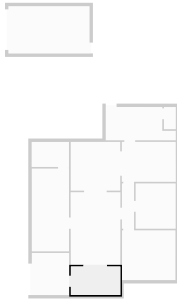
▼ Ground Floor



FLOORS: 1

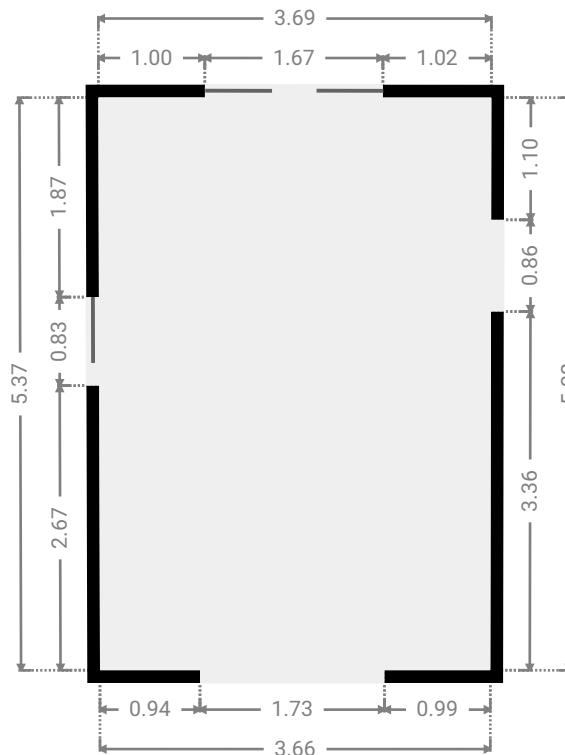
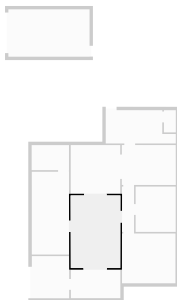
▼ **Hall**  
Ground Floor

WIDTH: 3.66 m • LENGTH: 2.11 m  
AREA: 7.72 m<sup>2</sup> • PERIMETER: 11.54 m



▼ **Living Room**  
Ground Floor

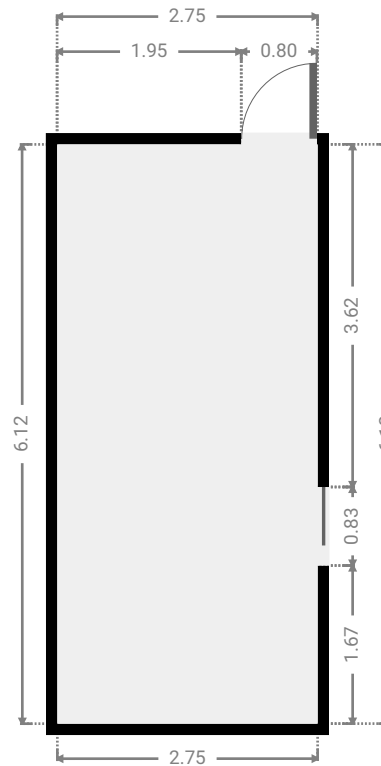
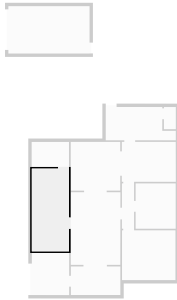
WIDTH: 3.69 m • LENGTH: 5.37 m  
AREA: 19.72 m<sup>2</sup> • PERIMETER: 18.09 m



FLOORS: 1

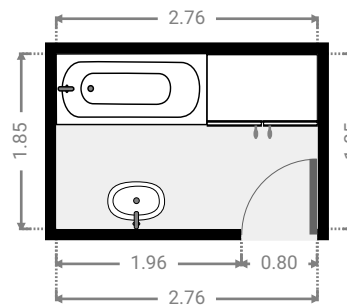
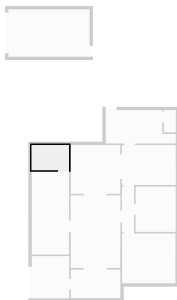
▼ **Living Room**  
Ground Floor

WIDTH: 2.75 m • LENGTH: 6.12 m  
AREA: 16.84 m<sup>2</sup> • PERIMETER: 17.74 m



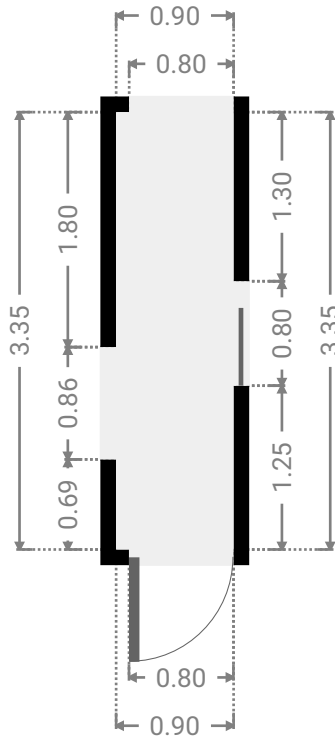
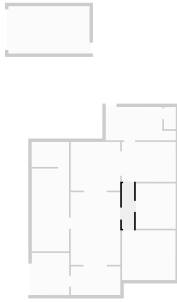
▼ **Bathroom**  
Ground Floor

WIDTH: 2.76 m • LENGTH: 1.85 m  
AREA: 5.11 m<sup>2</sup> • PERIMETER: 9.22 m



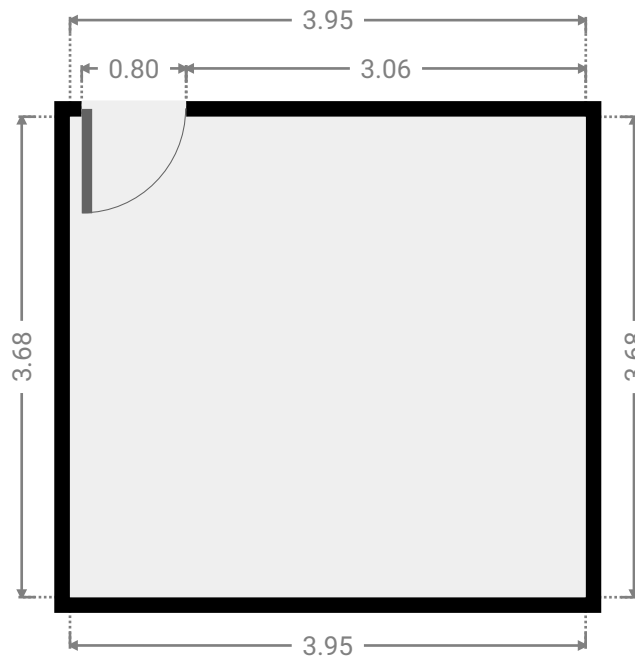
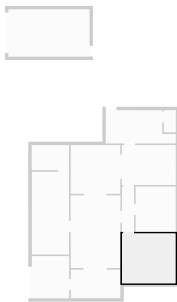
▼ **Hall**  
Ground Floor

WIDTH: 0.90 m • LENGTH: 3.35 m  
AREA: 3.01 m<sup>2</sup> • PERIMETER: 8.50 m



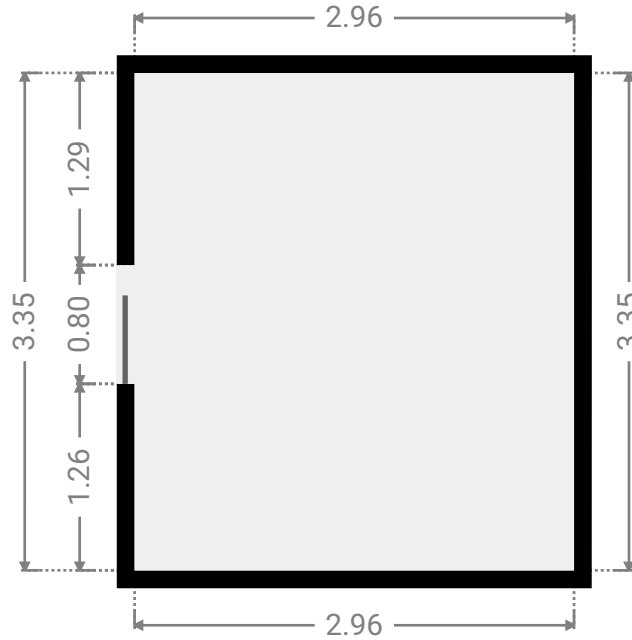
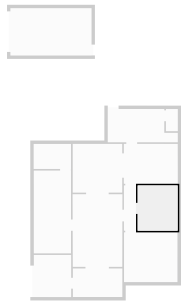
▼ **Bedroom**  
Ground Floor

WIDTH: 3.95 m • LENGTH: 3.68 m  
AREA: 14.54 m<sup>2</sup> • PERIMETER: 15.26 m



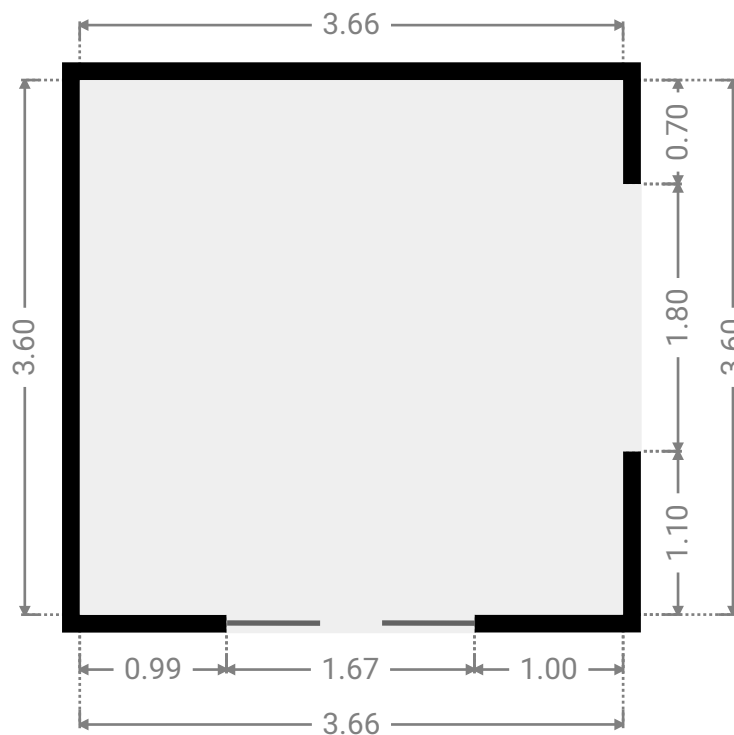
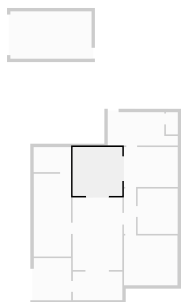
▼ **Bedroom**  
Ground Floor

WIDTH: 2.96 m • LENGTH: 3.35 m  
AREA: 9.92 m<sup>2</sup> • PERIMETER: 12.62 m



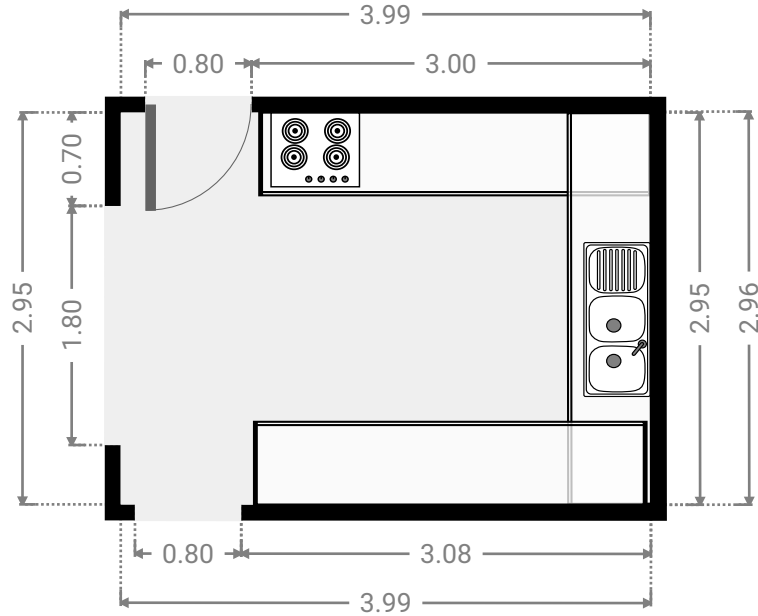
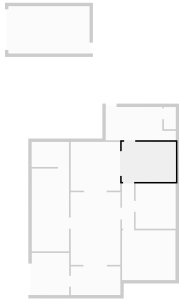
▼ **Dining Room**  
Ground Floor

WIDTH: 3.66 m • LENGTH: 3.60 m  
AREA: 13.18 m<sup>2</sup> • PERIMETER: 14.52 m



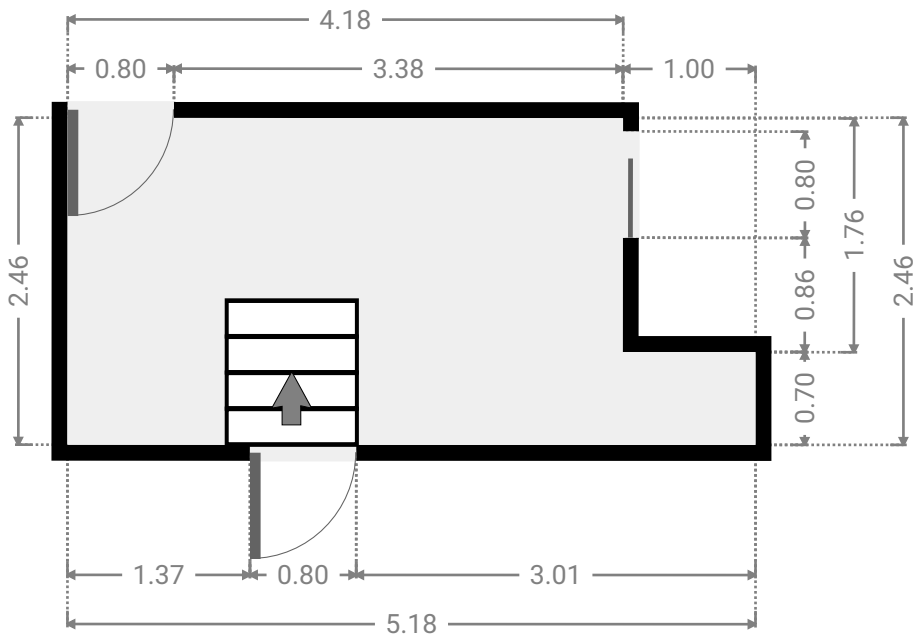
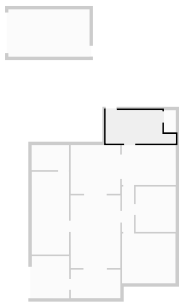
▼ Kitchen  
Ground Floor

WIDTH: 3.99 m • LENGTH: 2.96 m  
AREA: 11.77 m<sup>2</sup> • PERIMETER: 13.88 m



▼ Laundry Room  
Ground Floor

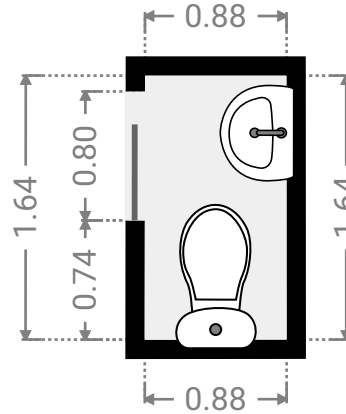
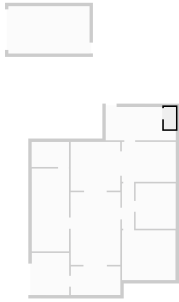
WIDTH: 5.18 m • LENGTH: 2.46 m  
AREA: 10.99 m<sup>2</sup> • PERIMETER: 15.28 m



FLOORS: 1

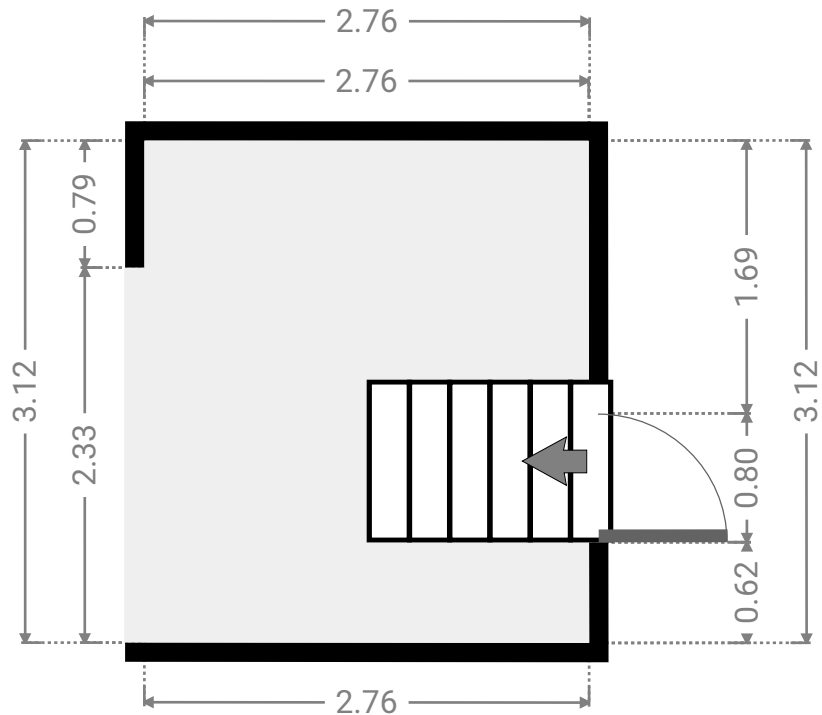
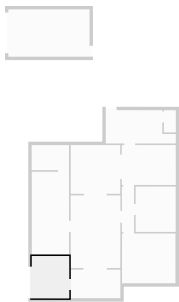
▼ **Toilet**  
Ground Floor

WIDTH: 0.88 m • LENGTH: 1.64 m  
AREA: 1.44 m<sup>2</sup> • PERIMETER: 5.04 m



▼ **Other**  
Ground Floor

WIDTH: 2.76 m • LENGTH: 3.12 m  
AREA: 8.60 m<sup>2</sup> • PERIMETER: 11.75 m





▼ **Garage**  
Ground Floor

WIDTH: 6.00 m • LENGTH: 3.50 m  
AREA: 21.00 m<sup>2</sup> • PERIMETER: 19.00 m

