



Ray White Rockhampton
 reception.rockhampton@raywhite.com
 (07)4923 0000
 2016-11-14

157 m²

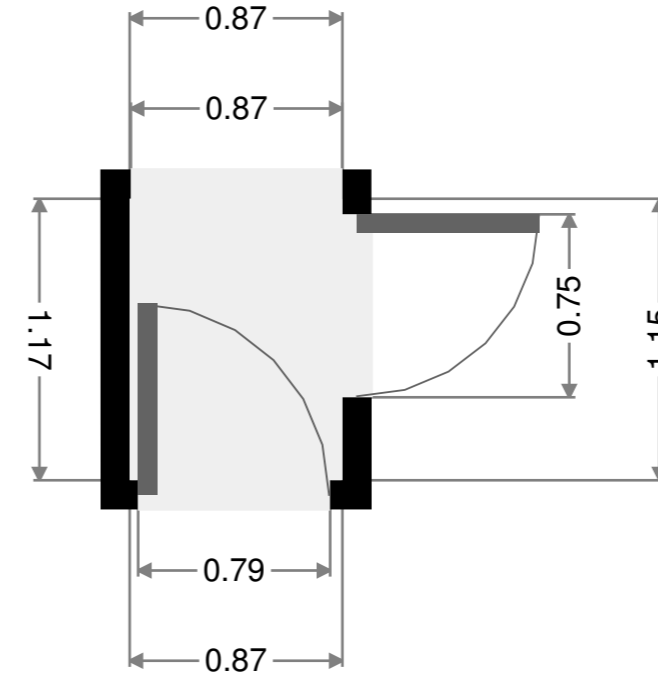
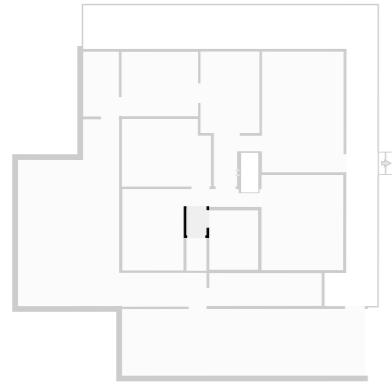
1 Floor

3 Bedrooms

1 Bathroom

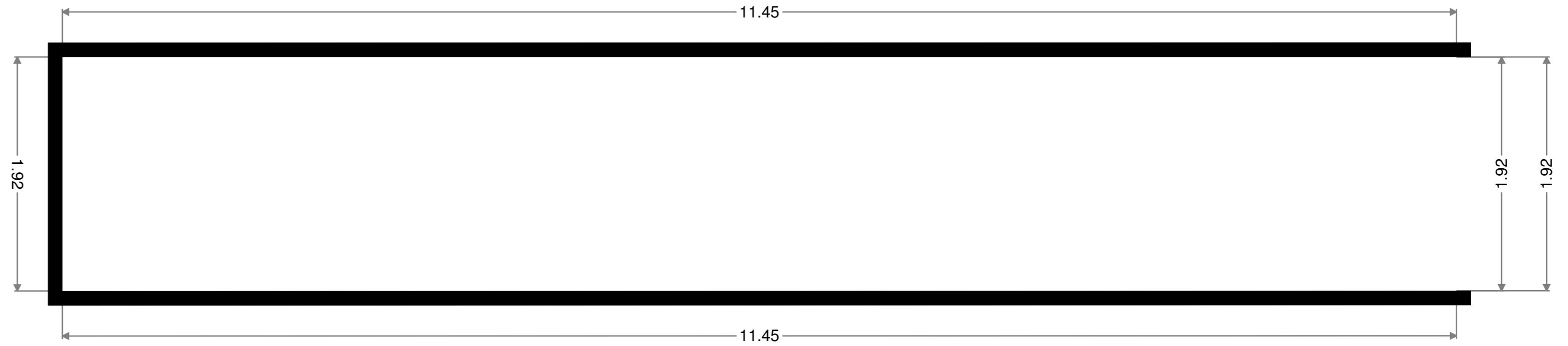
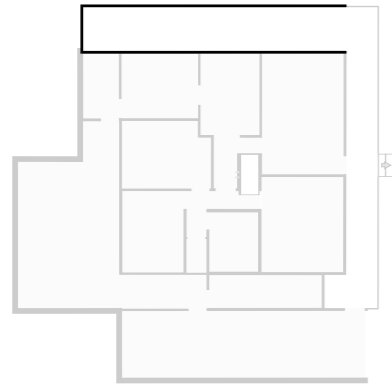
Hall

Width: 0.87 m
Length: 1.15 m
Area: 1.01 m²
Perimeter: 4.05 m



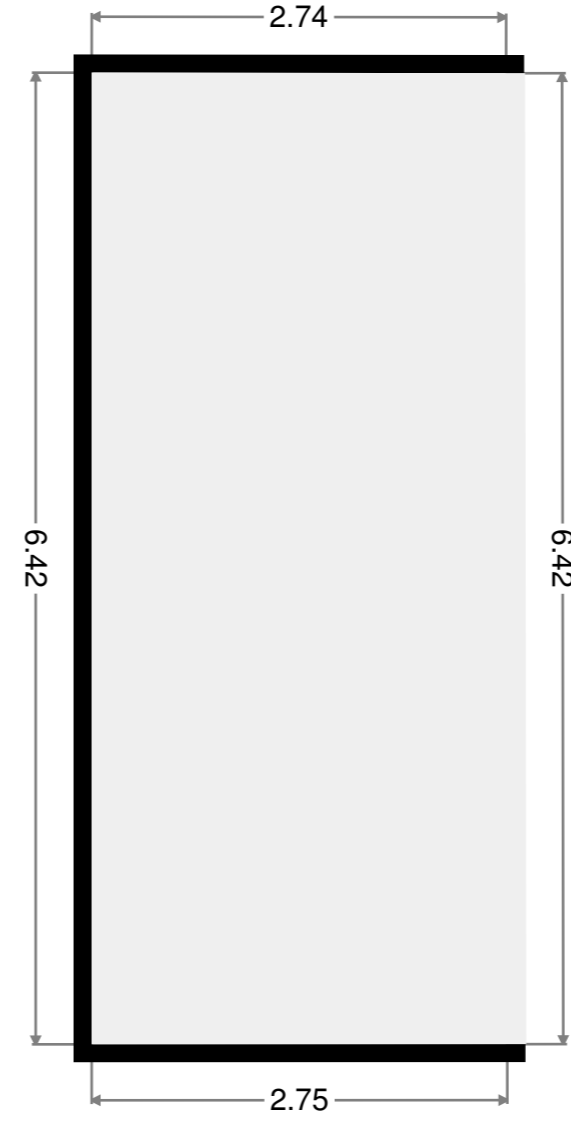
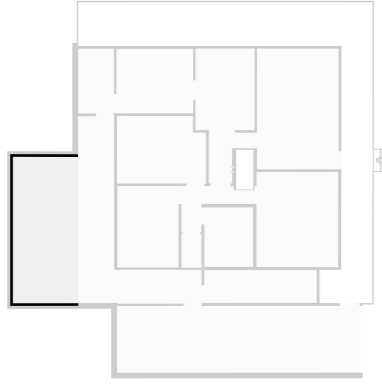
Side Verandah

Width: 1.92 m
Length: 11.45 m
Area: 21.98 m²
Perimeter: 26.74 m
Ceiling Height: 2.17 m



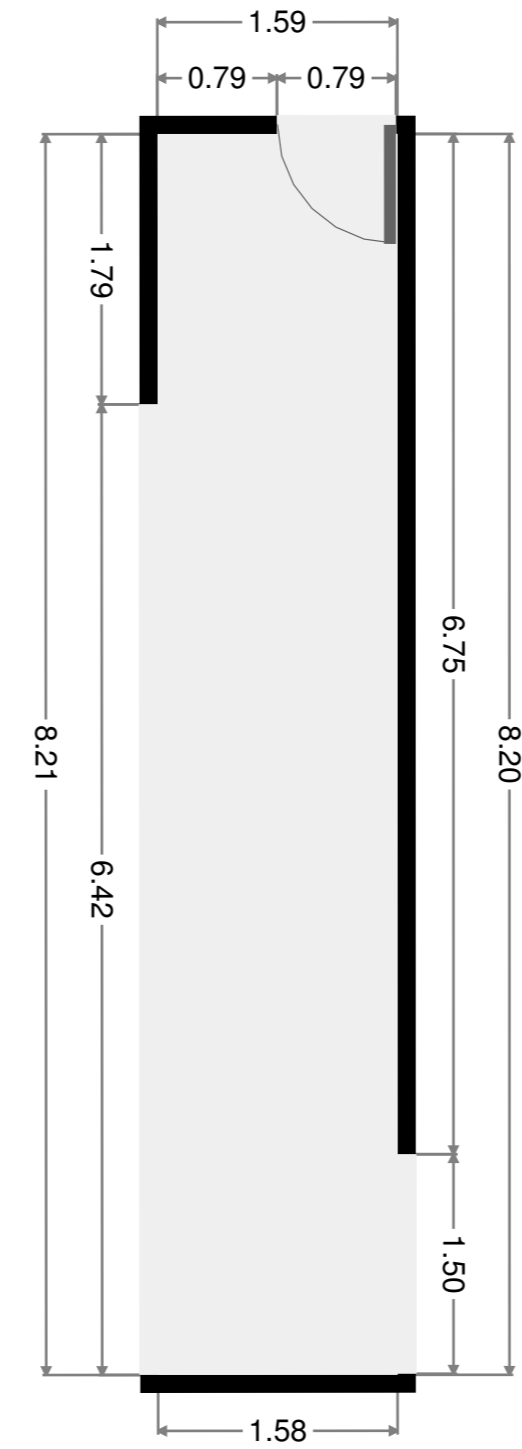
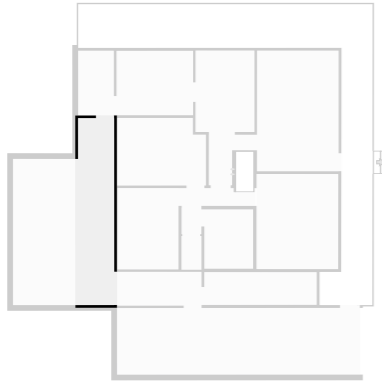
Outdoor Area

Width: 2.75 m
 Length: 6.42 m
 Area: 17.62 m²
 Perimeter: 18.33 m
 Ceiling Height: 2.17 m

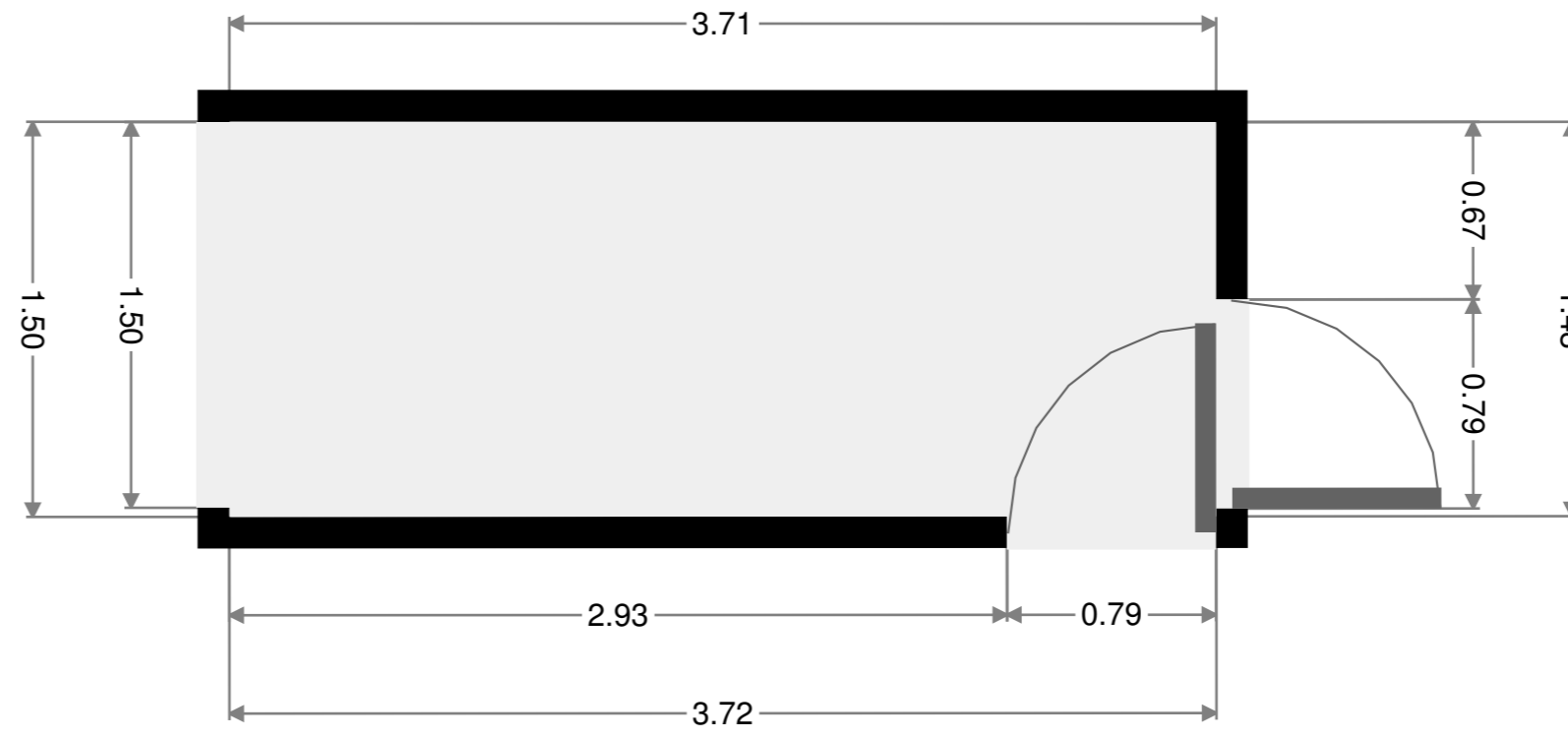


Verandah

Width: 1.59 m
 Length: 8.20 m
 Area: 13.00 m²
 Perimeter: 19.58 m

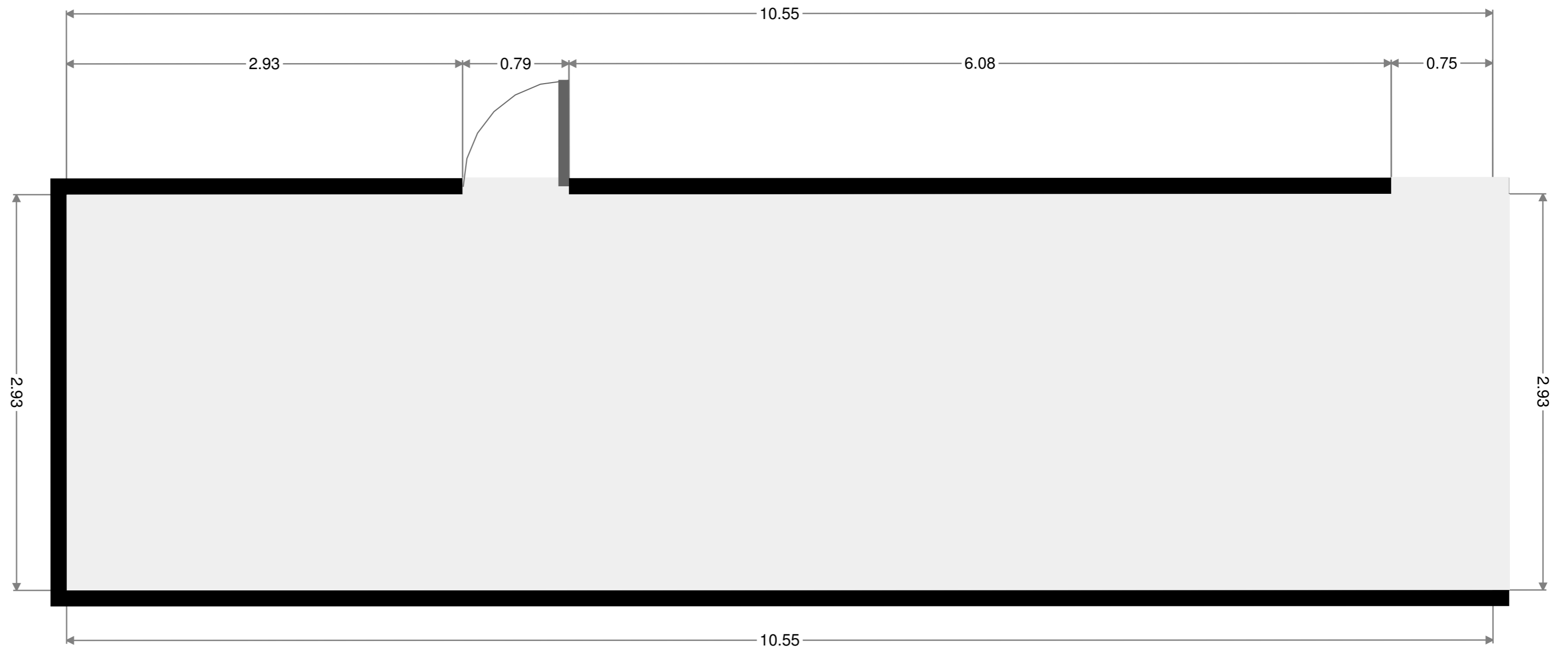
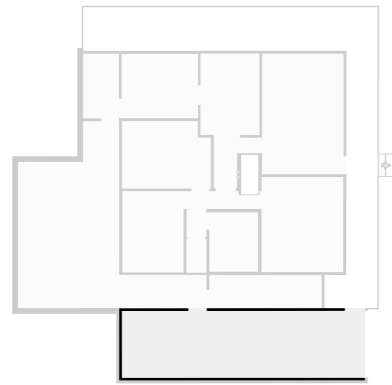


Width: 1.48 m
 Length: 3.72 m
 Area: 5.52 m²
 Perimeter: 10.40 m



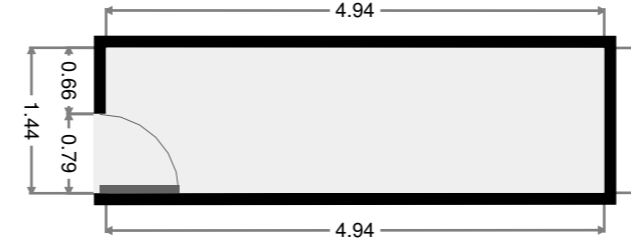
Garage

Width: 2.93 m
 Length: 10.55 m
 Area: 30.88 m²
 Perimeter: 26.95 m



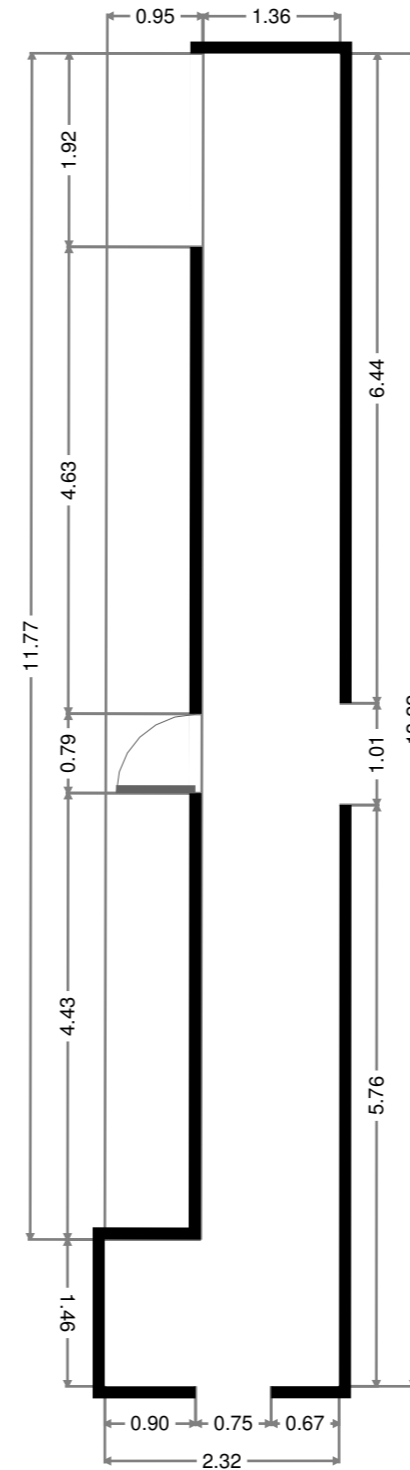
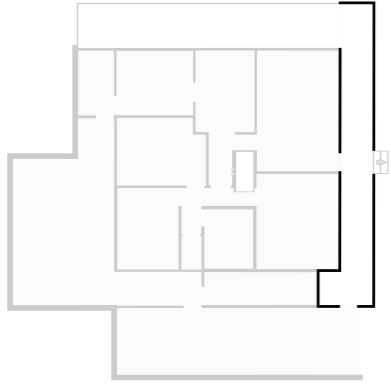
Storage

Width: 1.43 m
 Length: 4.94 m
 Area: 7.11 m²
 Perimeter: 12.76 m



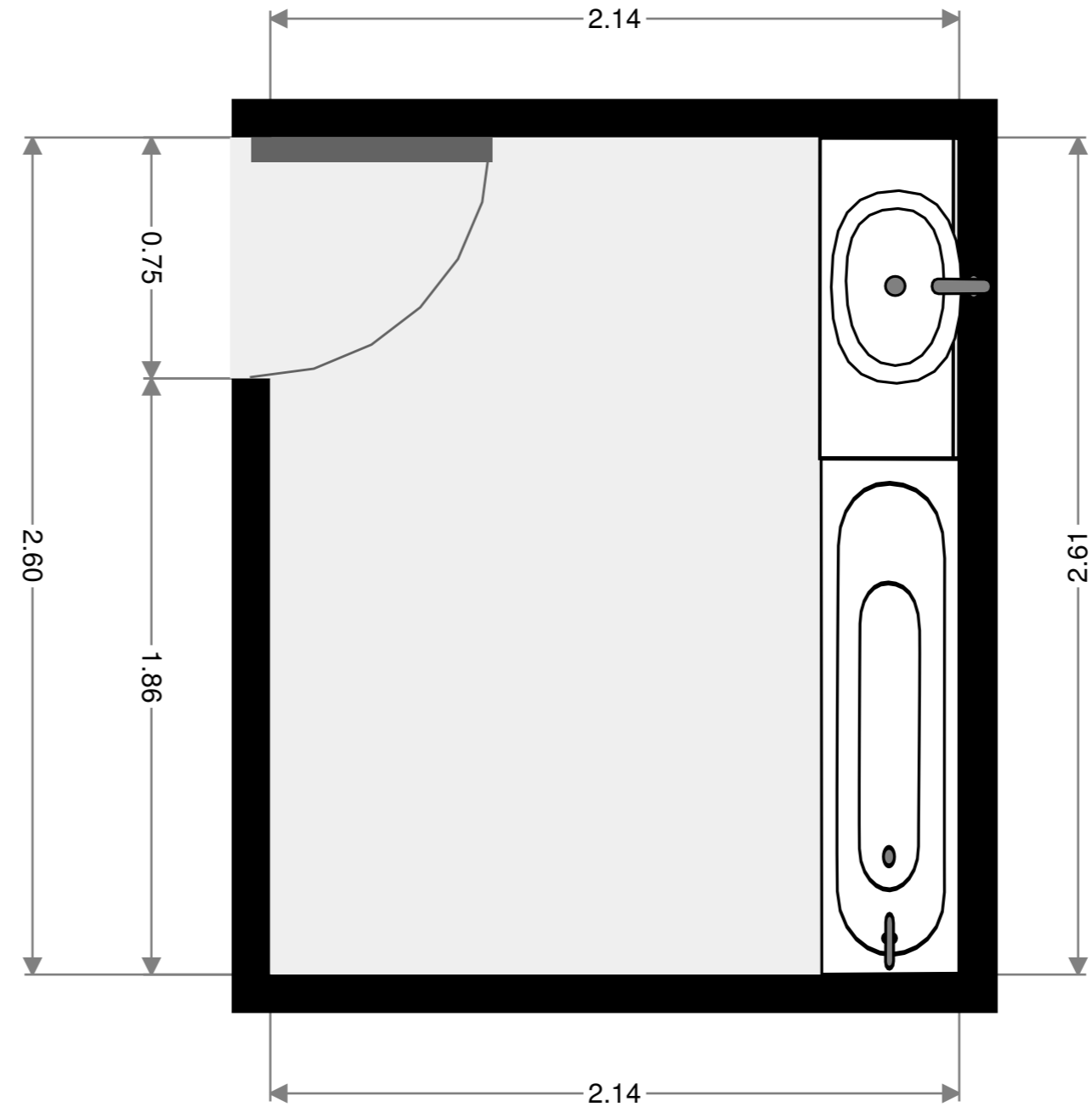
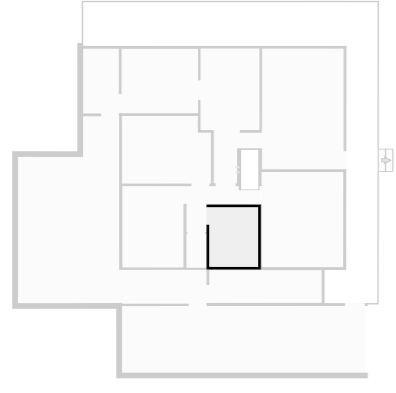
Front Verandah

Width: 2.32 m
 Length: 13.22 m
 Area: 19.48 m²
 Perimeter: 31.08 m
 Ceiling Height: 2.17 m



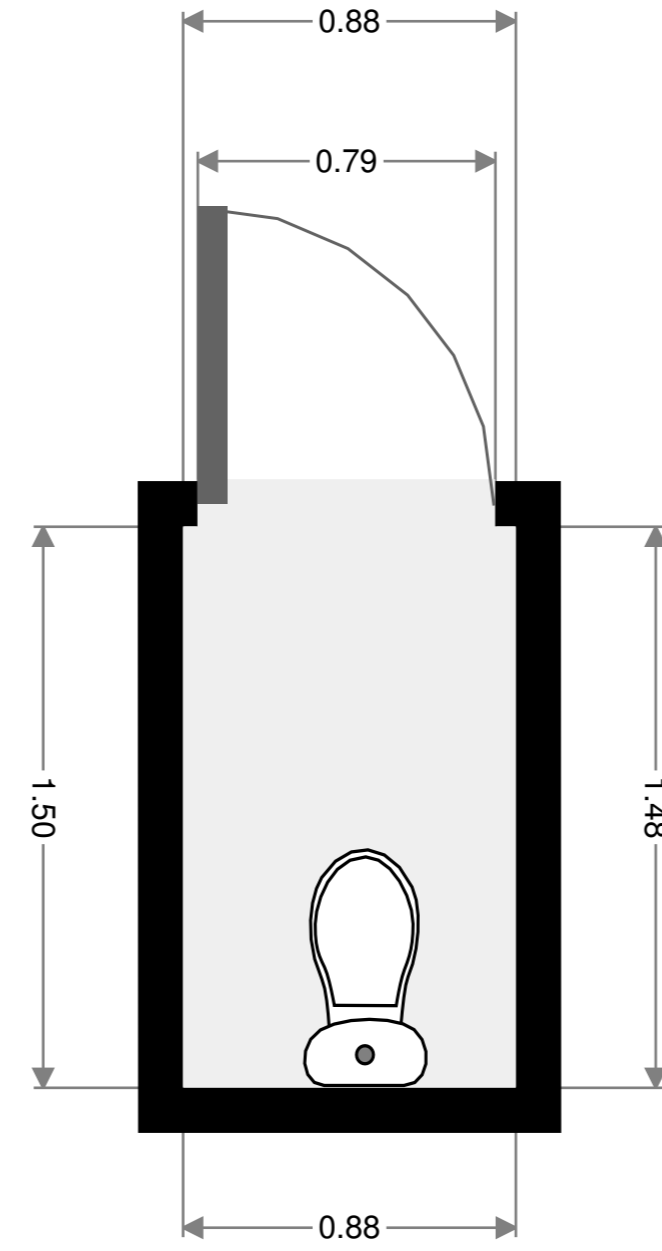
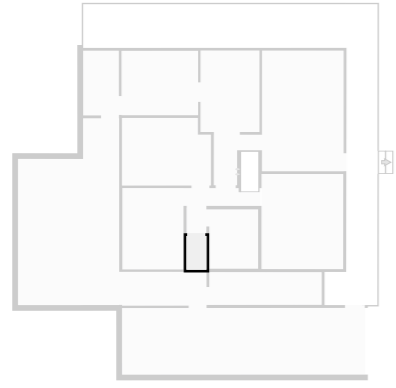
Bathroom

Width: 2.14 m
 Length: 2.61 m
 Area: 5.59 m²
 Perimeter: 9.50 m



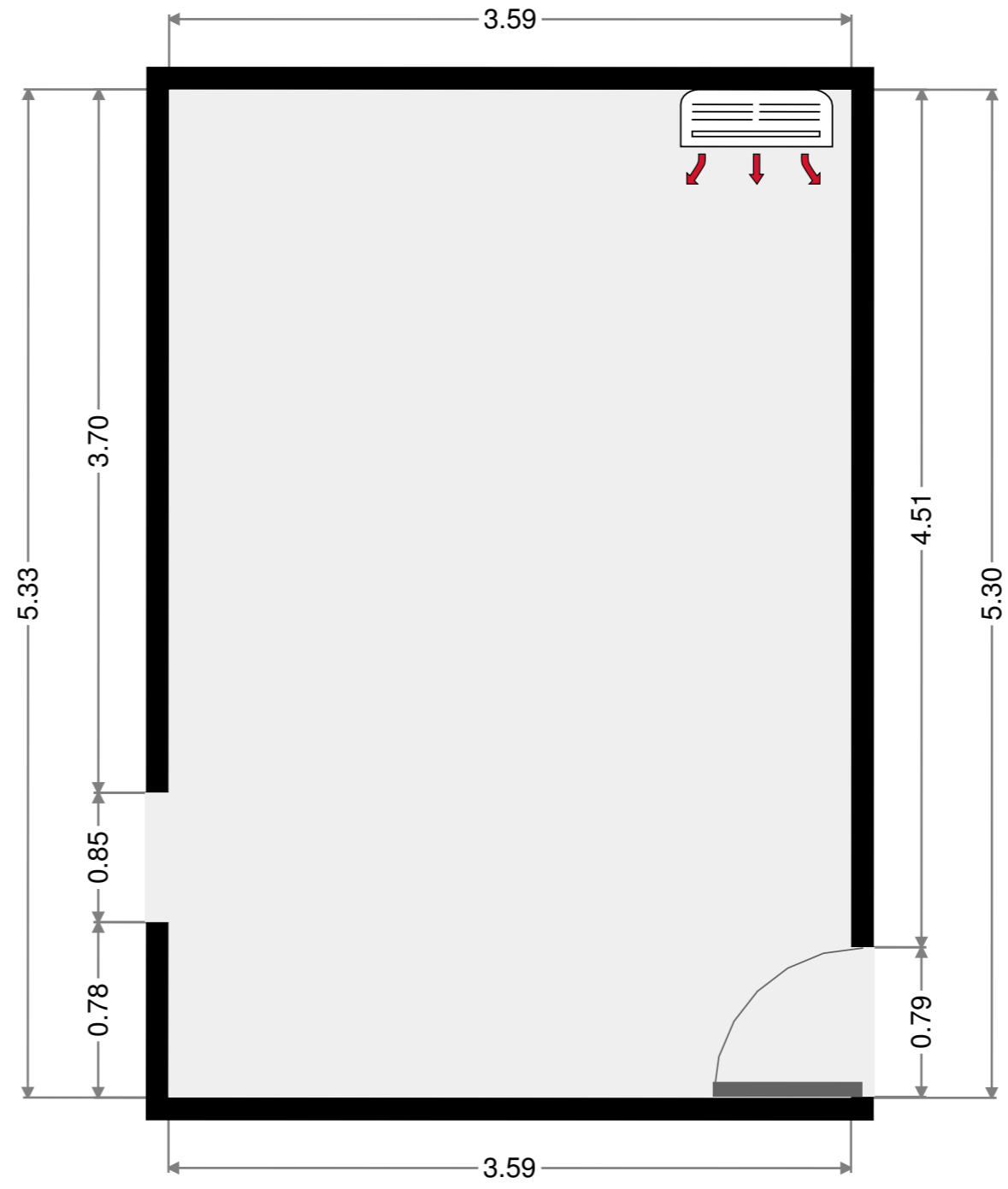
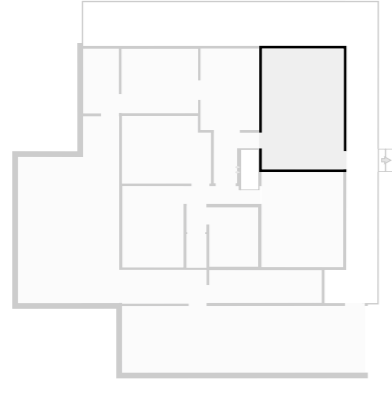
Toilet

Width: 0.88 m
 Length: 1.48 m
 Area: 1.31 m²
 Perimeter: 4.73 m



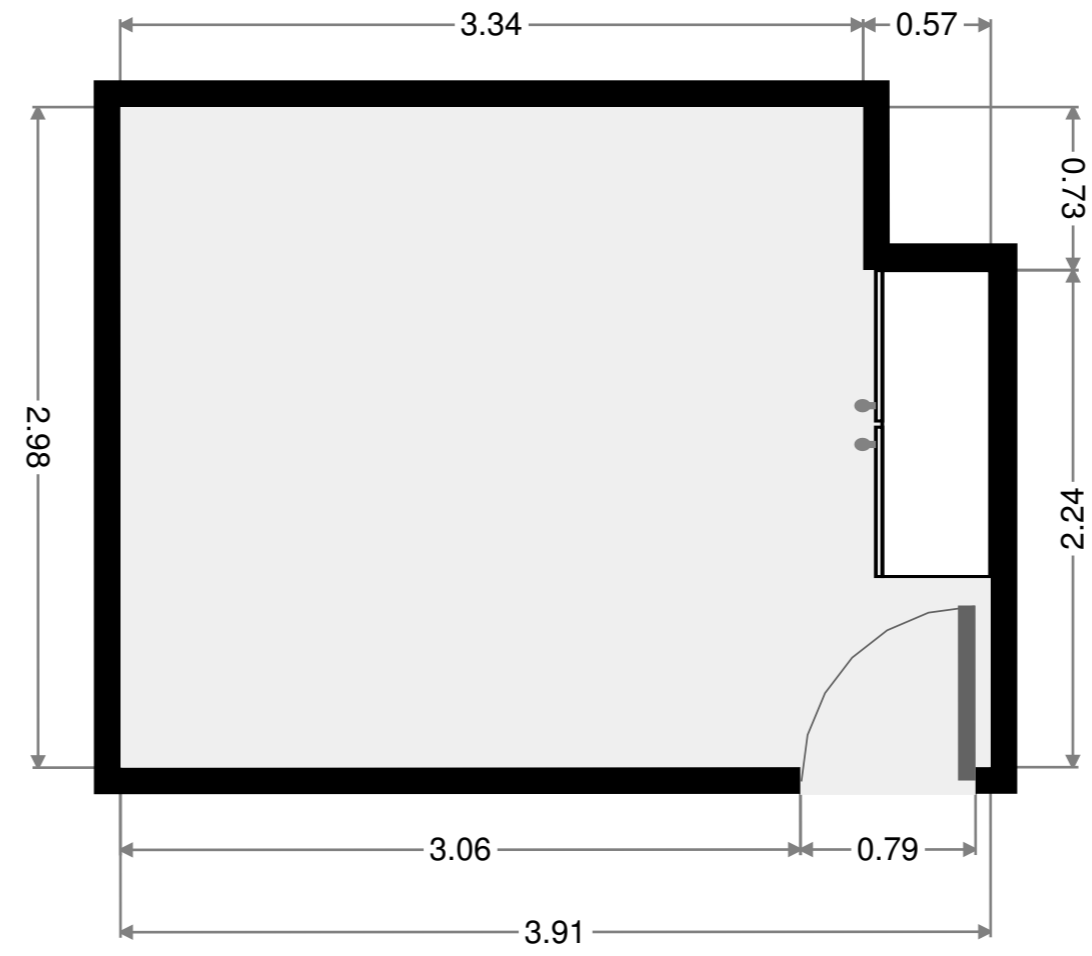
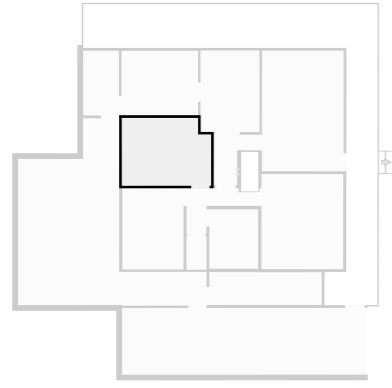
Living Room

Width: 3.59 m
 Length: 5.30 m
 Area: 19.03 m²
 Perimeter: 17.78 m



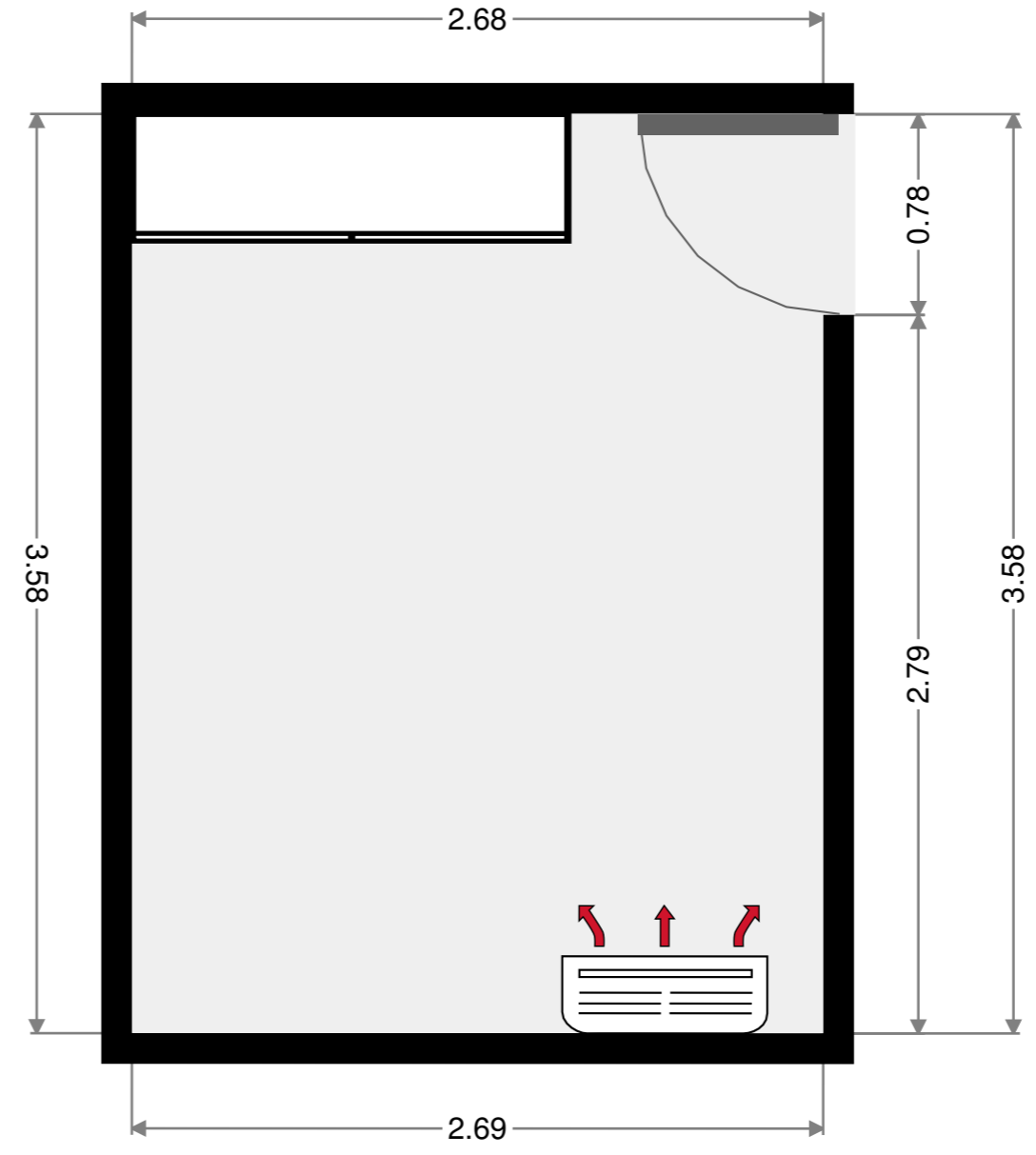
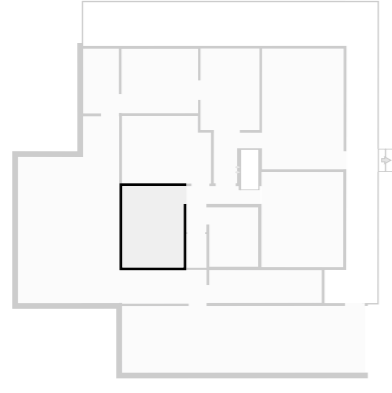
Bedroom

Width: 2.98 m
 Length: 3.91 m
 Area: 11.20 m²
 Perimeter: 13.76 m
 Ceiling Height: 2.17 m



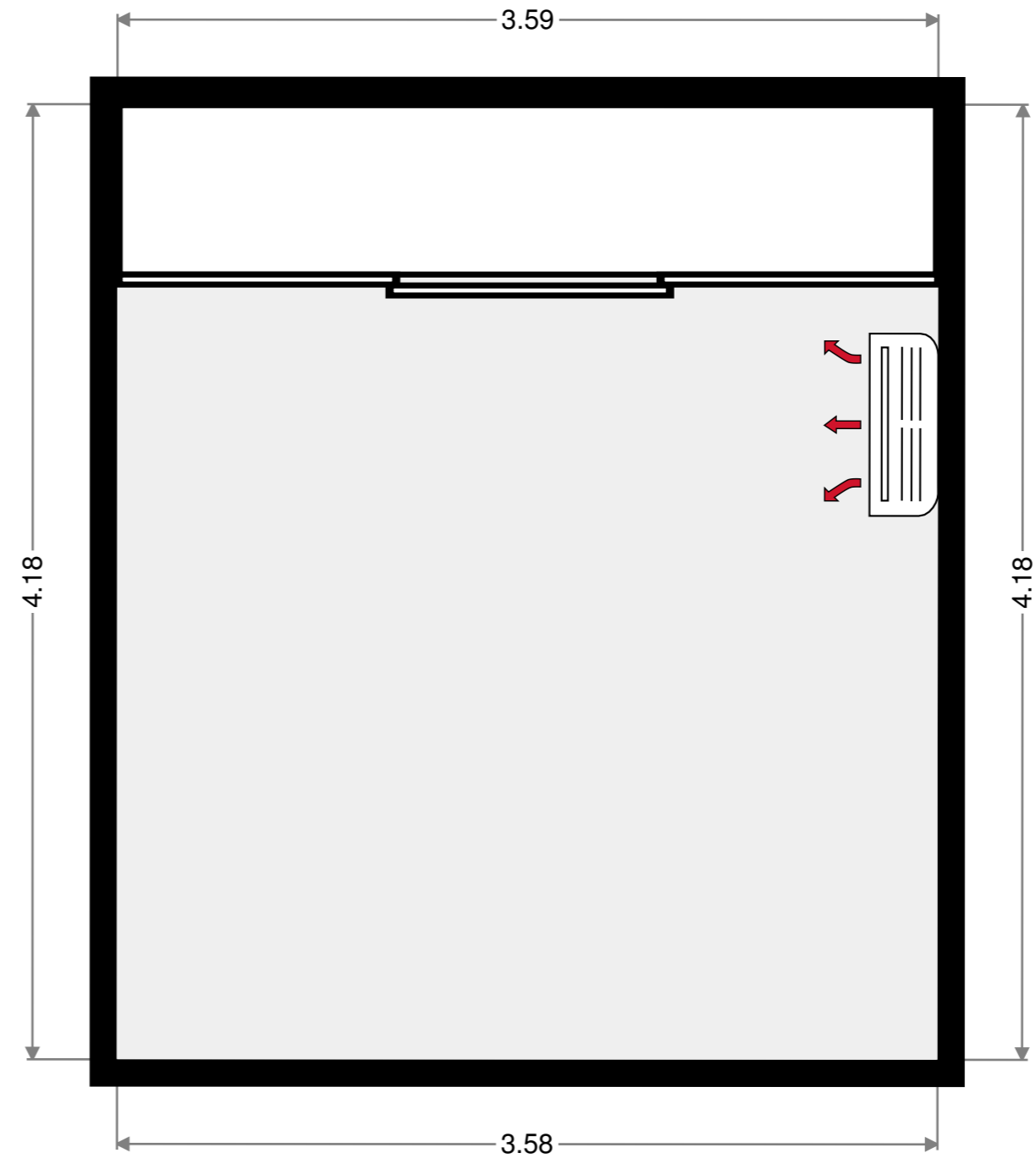
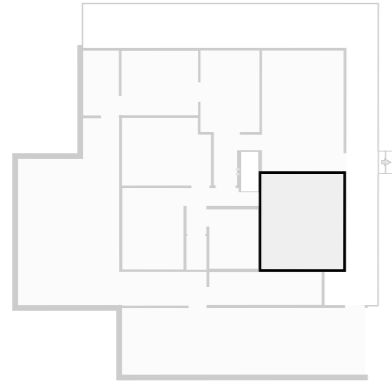
Bedroom

Width: 2.69 m
 Length: 3.58 m
 Area: 9.61 m²
 Perimeter: 12.53 m



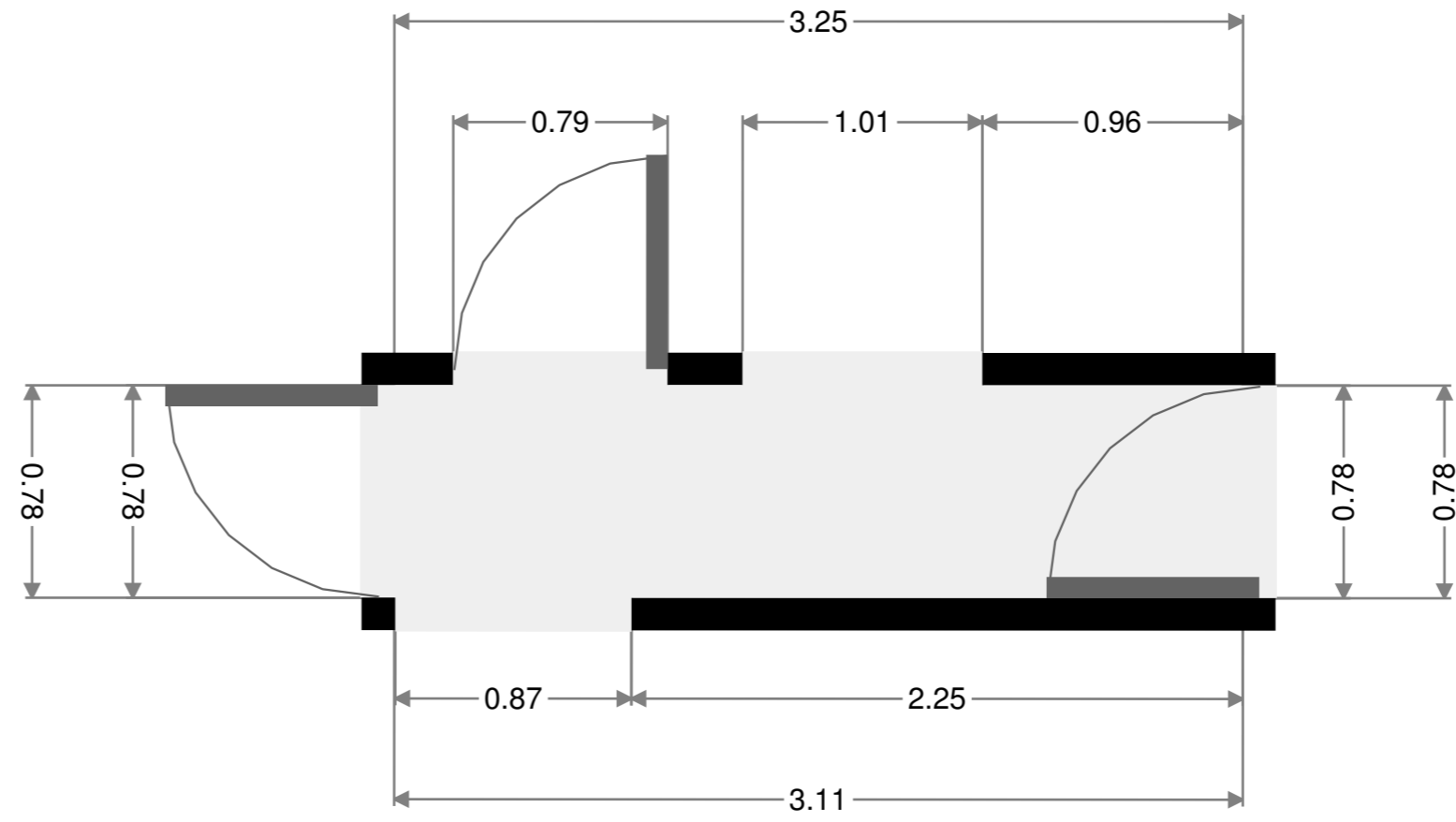
Master Bedroom

Width: 3.59 m
 Length: 4.18 m
 Area: 15.00 m²
 Perimeter: 15.54 m



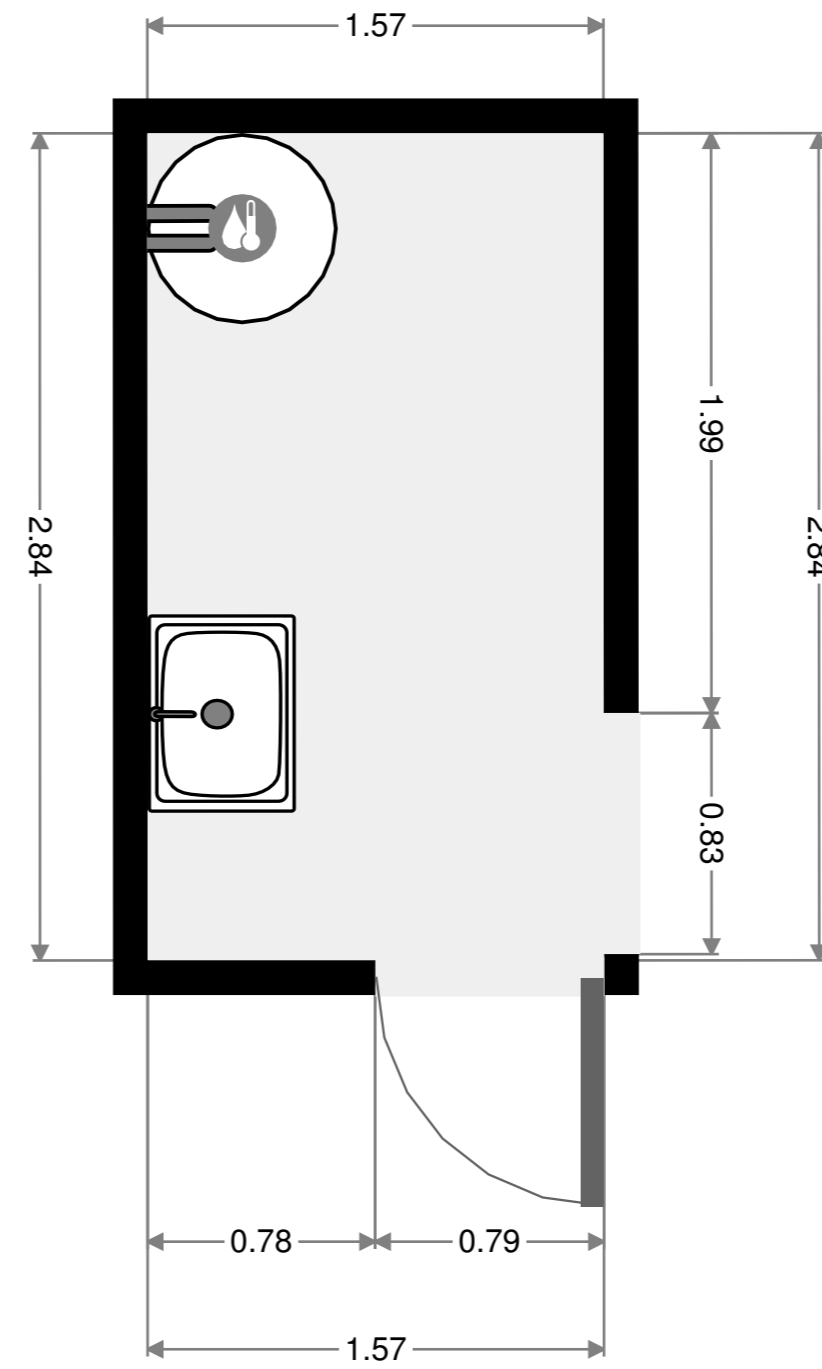
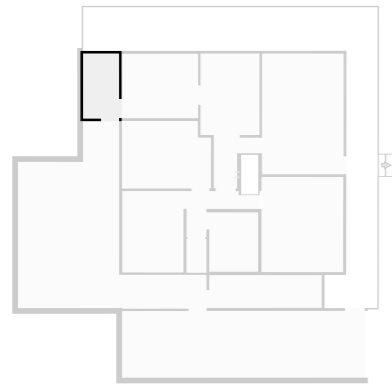
Hall

Width: 0.78 m
 Length: 3.11 m
 Area: 2.43 m²
 Perimeter: 7.79 m



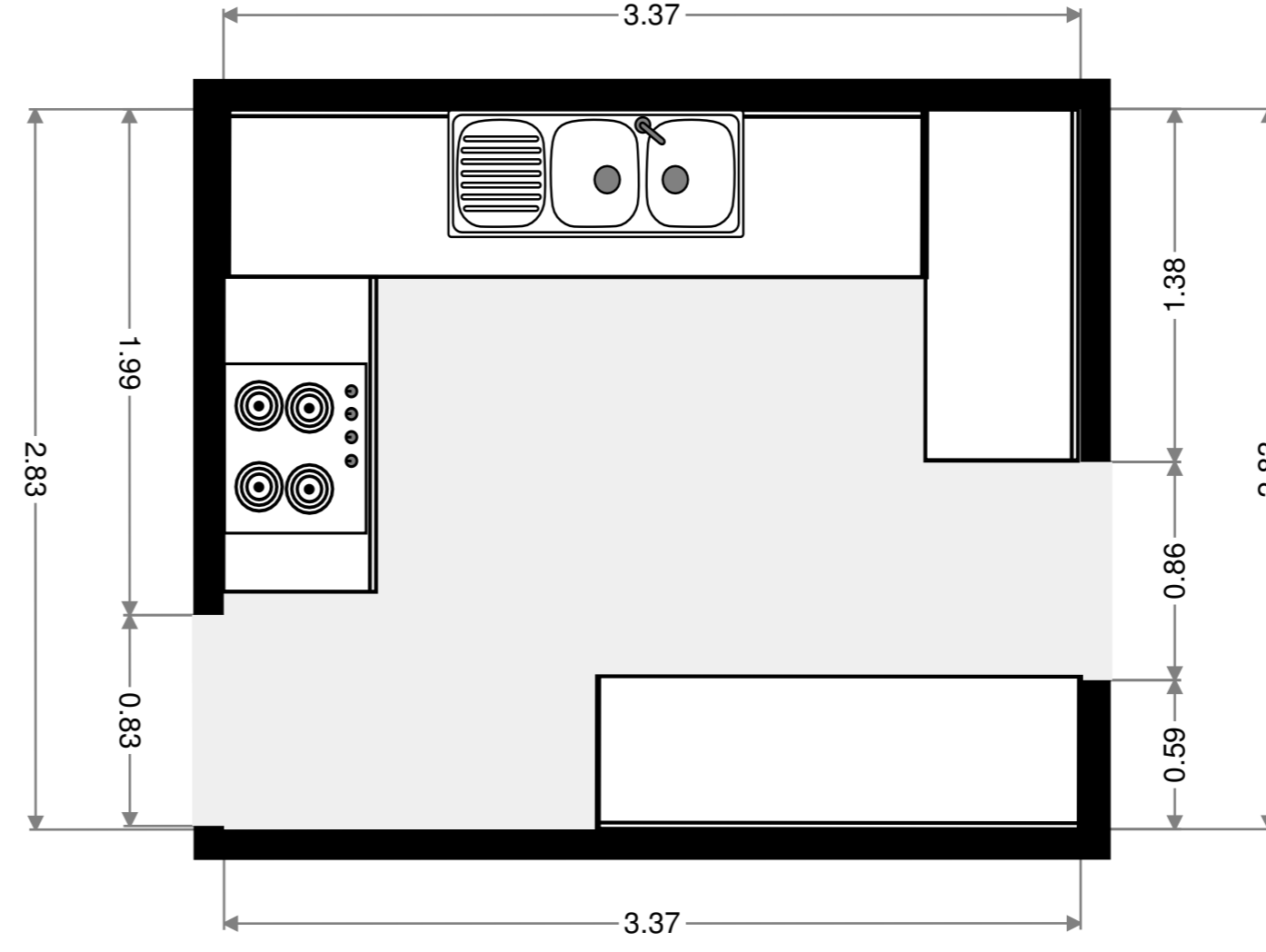
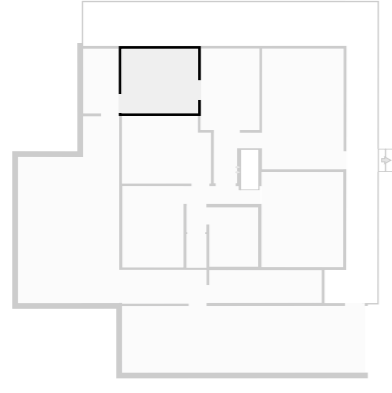
Laundry Room

Width: 1.57 m
 Length: 2.84 m
 Area: 4.46 m²
 Perimeter: 8.83 m



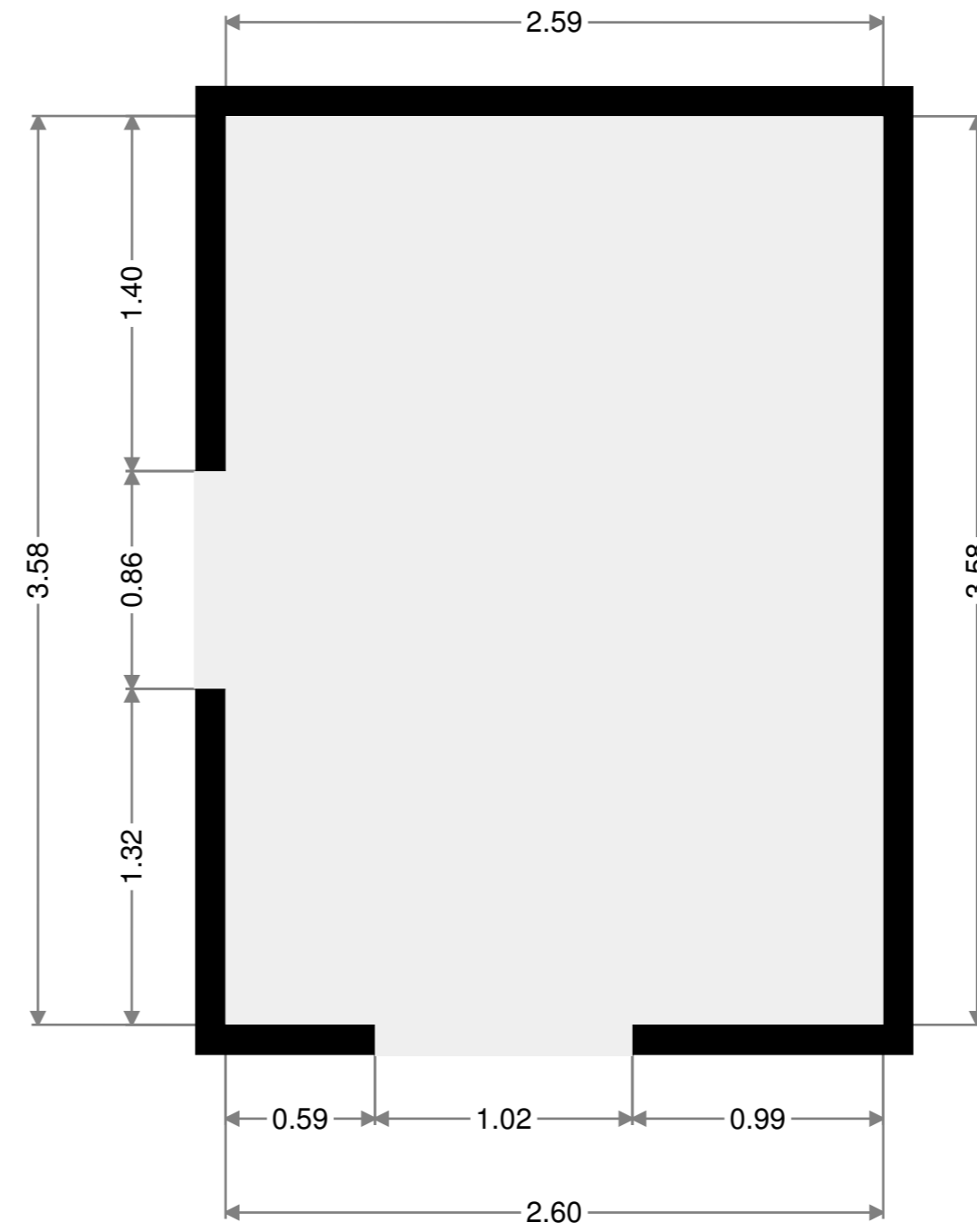
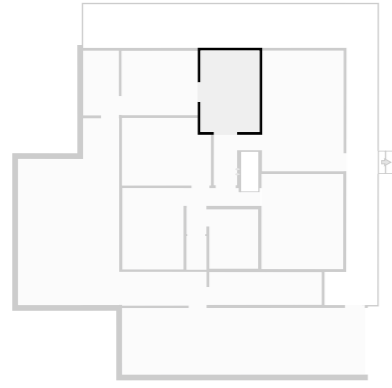
Kitchen

Width: 2.83 m
 Length: 3.37 m
 Area: 9.53 m²
 Perimeter: 12.39 m



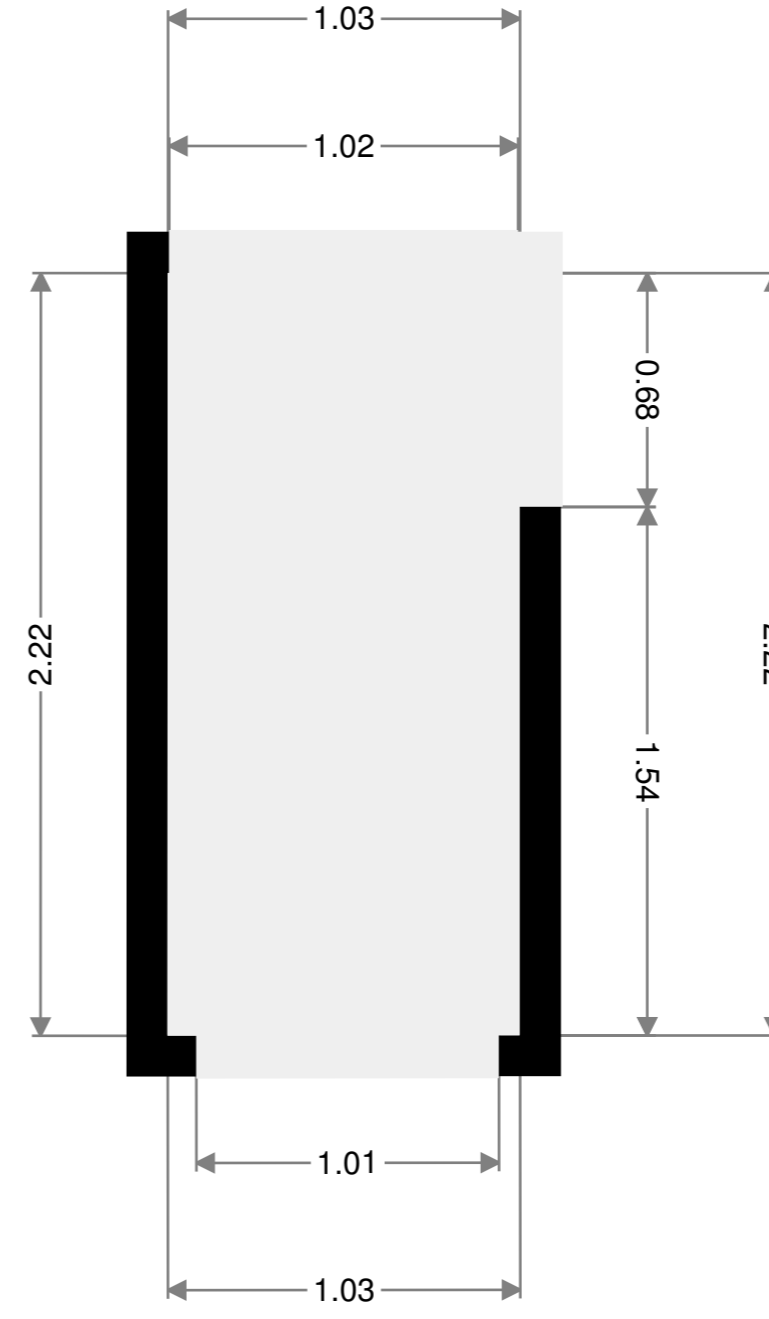
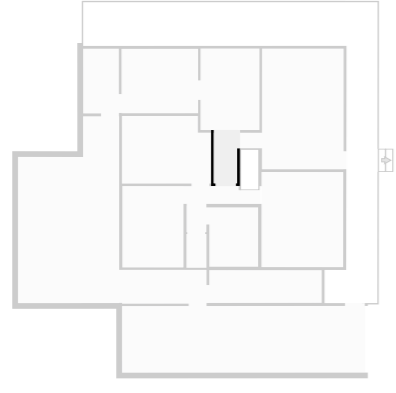
Dining Room

Width: 2.60 m
 Length: 3.58 m
 Area: 9.29 m²
 Perimeter: 12.35 m



Hall

Width: 1.03 m
Length: 2.22 m
Area: 2.27 m²
Perimeter: 6.49 m



Hall

Width: 0.68 m
Length: 0.86 m
Area: 0.58 m²
Perimeter: 3.07 m

