

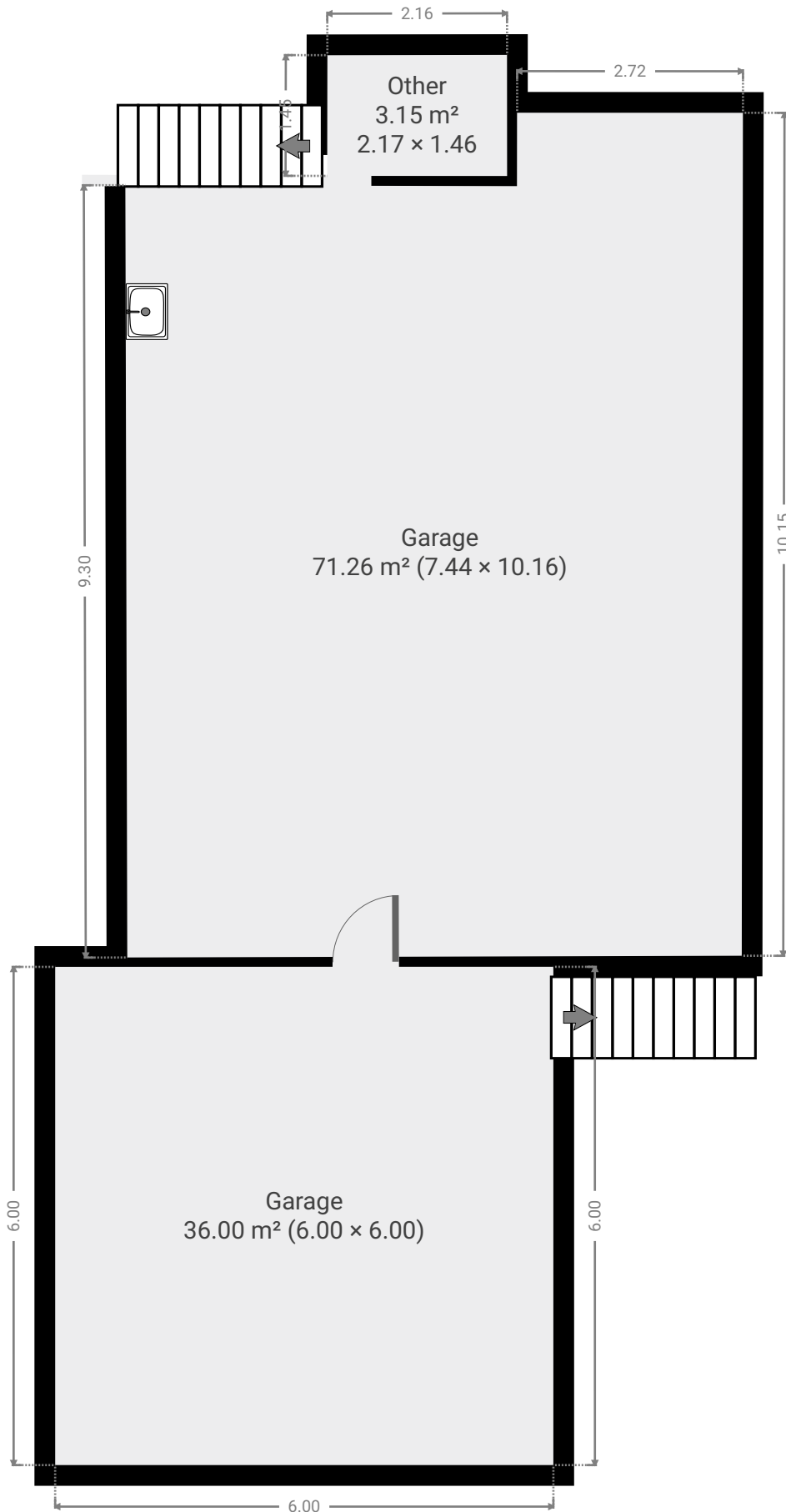
40 Harbourne Street

SUBMITTED BY
Ray White Rockhampton Casey
stockers@cqoz.com

CREATED ON
2022-05-16

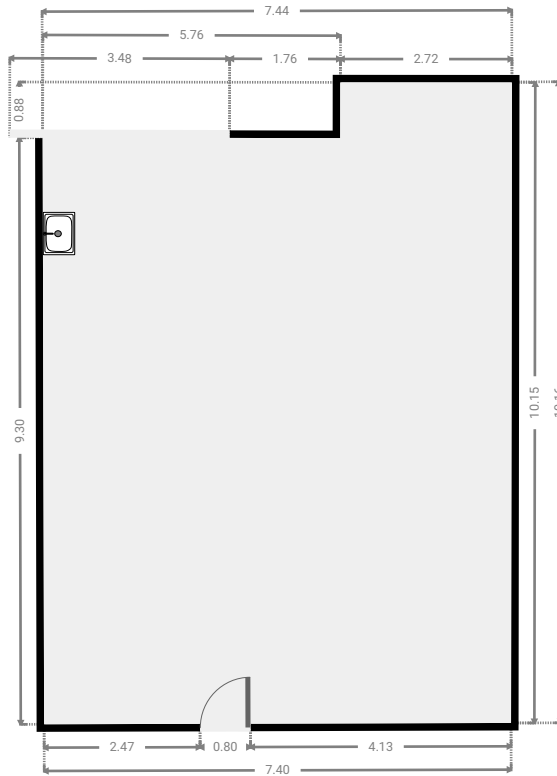
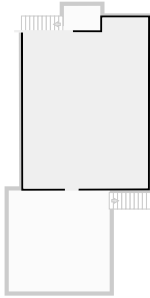
Floors
2

▼ Ground Floor



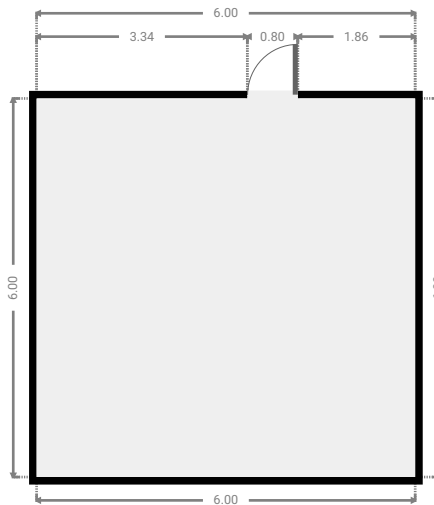
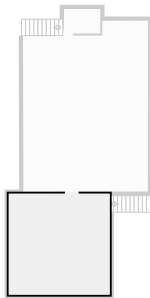
▼ **Garage**
Ground Floor

WIDTH: 7.44 m • LENGTH: 10.16 m
AREA: 71.26 m² • PERIMETER: 35.17 m



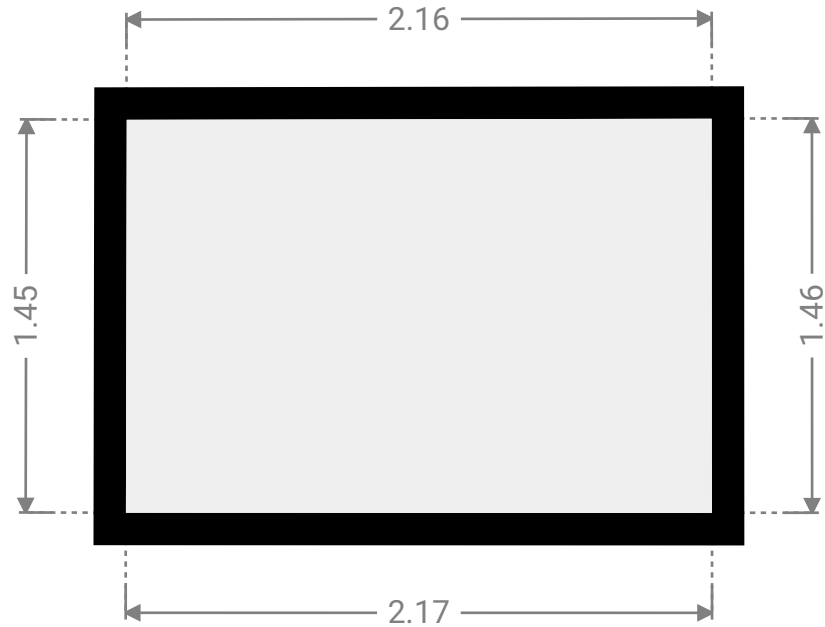
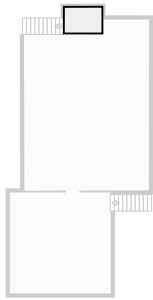
▼ **Garage**
Ground Floor

WIDTH: 6.00 m • LENGTH: 6.00 m
AREA: 36.00 m² • PERIMETER: 24.00 m

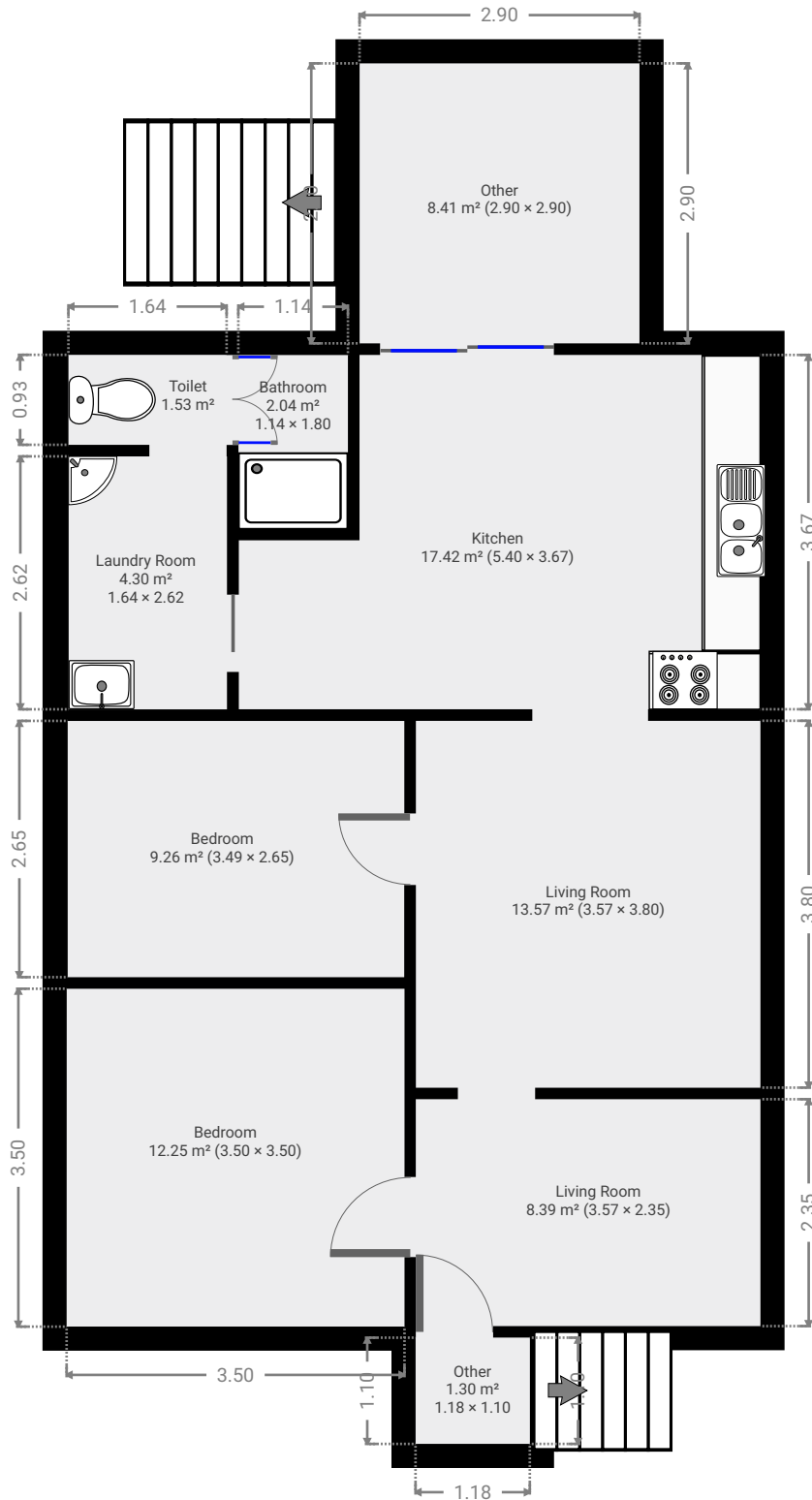


▼ Other
Ground Floor

WIDTH: 2.17 m • LENGTH: 1.46 m
AREA: 3.15 m² • PERIMETER: 7.24 m

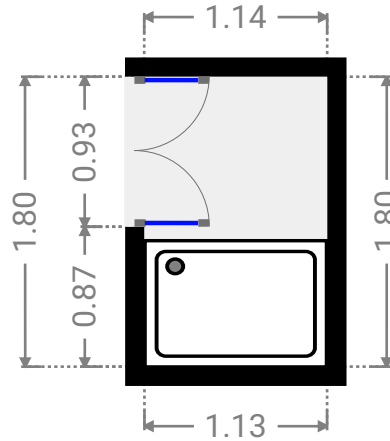
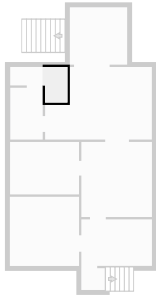


▼ 1st Floor



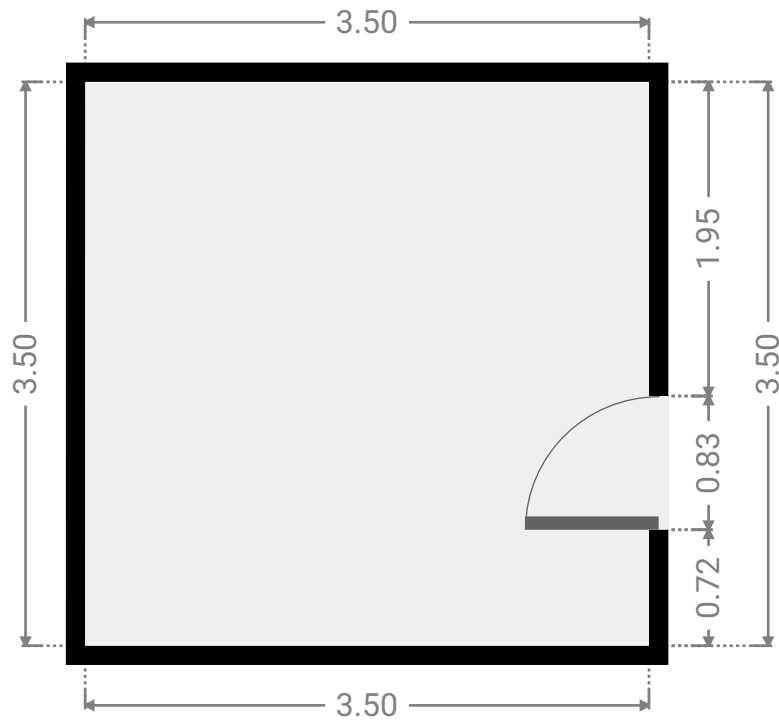
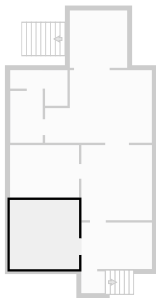
▼ **Bathroom**
1st Floor

WIDTH: 1.14 m • LENGTH: 1.80 m
AREA: 2.04 m² • PERIMETER: 5.87 m



▼ **Bedroom**
1st Floor

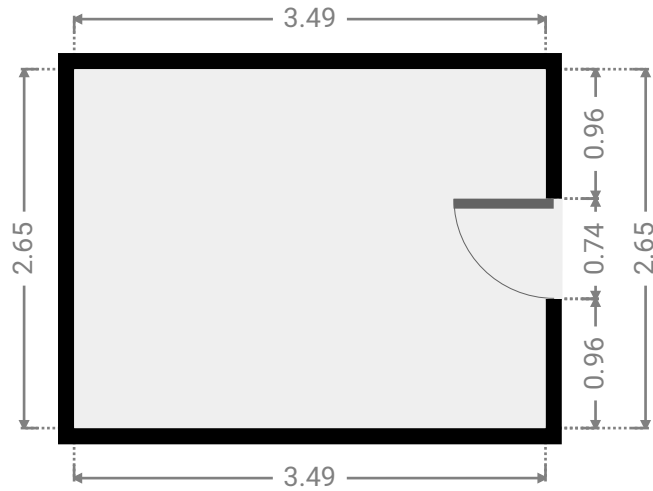
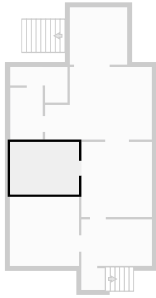
WIDTH: 3.50 m • LENGTH: 3.50 m
AREA: 12.25 m² • PERIMETER: 14.00 m



FLOORS: 2

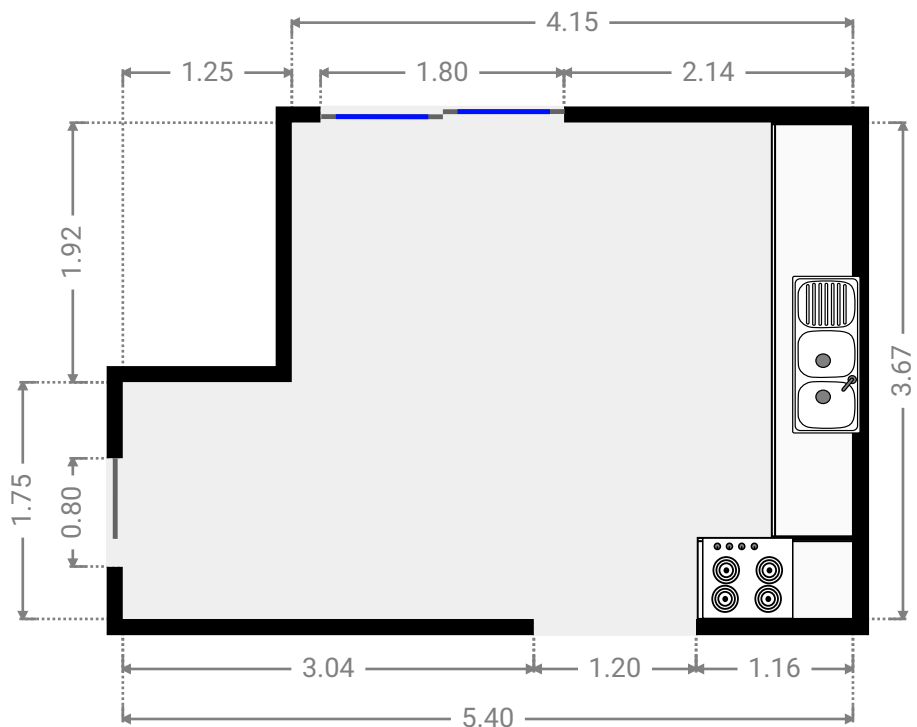
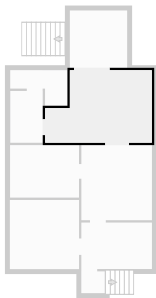
▼ Bedroom
1st Floor

WIDTH: 3.49 m • LENGTH: 2.65 m
AREA: 9.26 m² • PERIMETER: 12.28 m



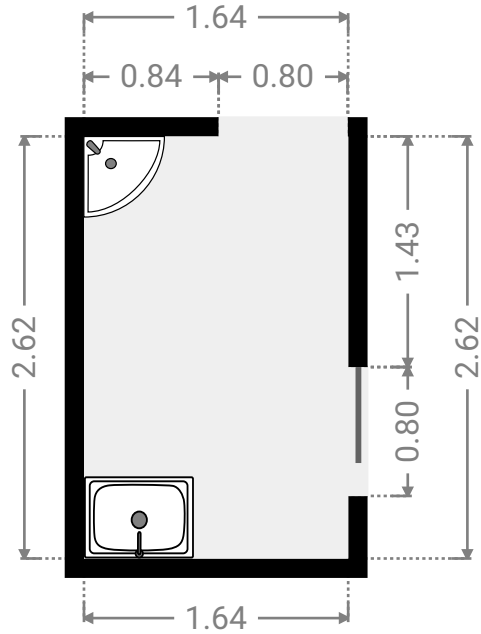
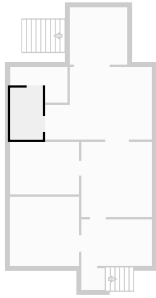
▼ Kitchen
1st Floor

WIDTH: 5.40 m • LENGTH: 3.67 m
AREA: 17.42 m² • PERIMETER: 18.14 m



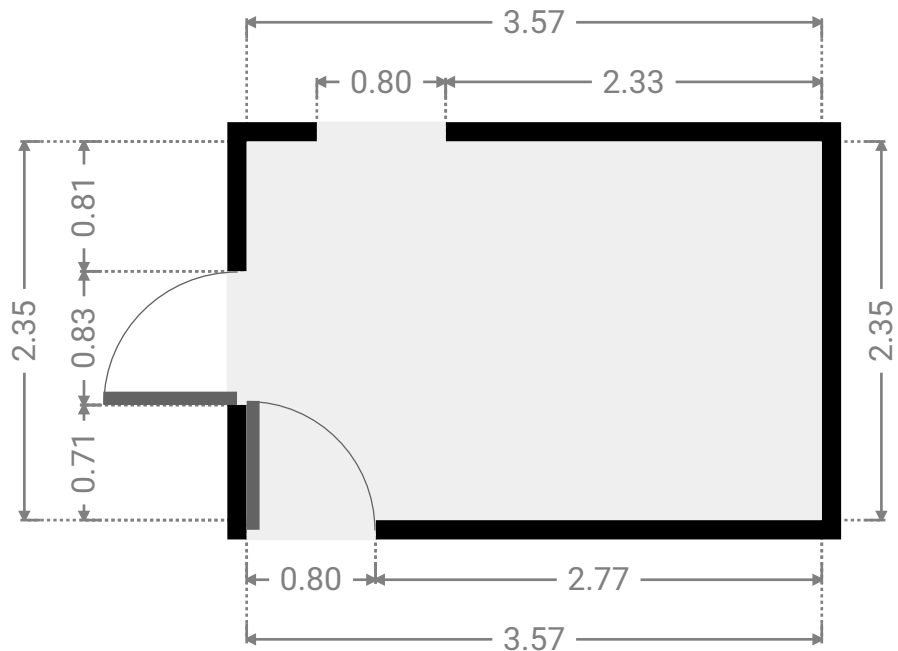
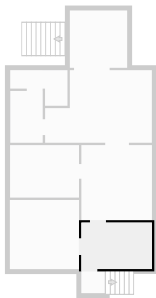
▼ **Laundry Room**
1st Floor

WIDTH: 1.64 m • LENGTH: 2.62 m
AREA: 4.30 m² • PERIMETER: 8.52 m



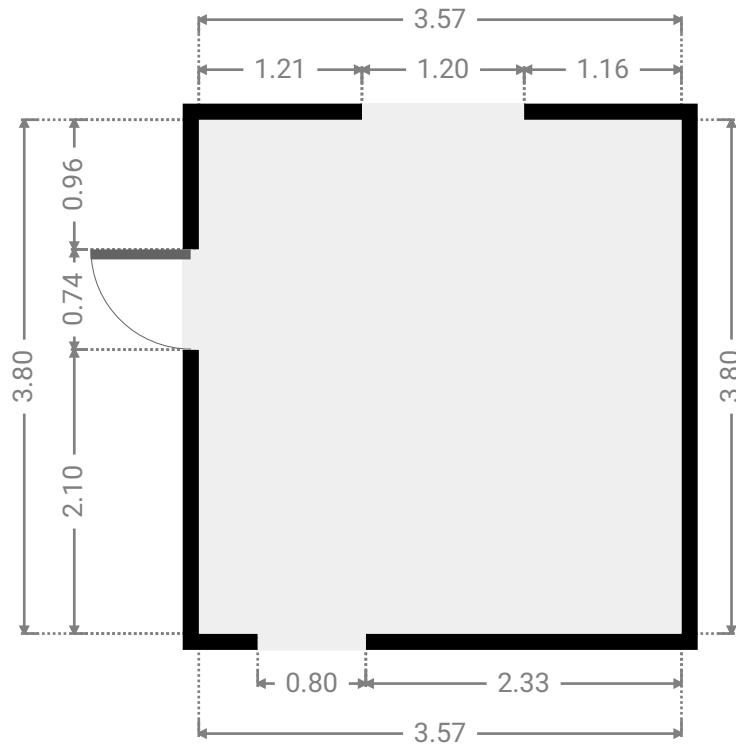
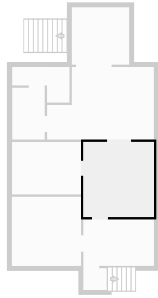
▼ **Living Room**
1st Floor

WIDTH: 3.57 m • LENGTH: 2.35 m
AREA: 8.39 m² • PERIMETER: 11.84 m



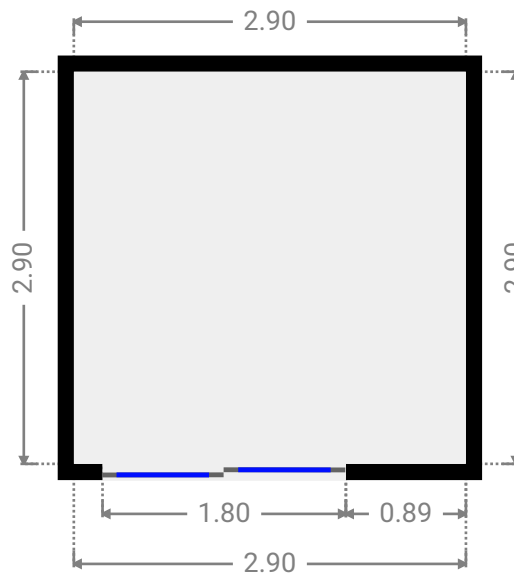
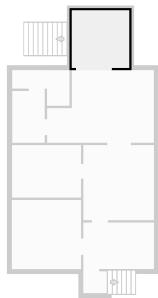
▼ **Living Room**
1st Floor

WIDTH: 3.57 m • LENGTH: 3.80 m
AREA: 13.57 m² • PERIMETER: 14.74 m



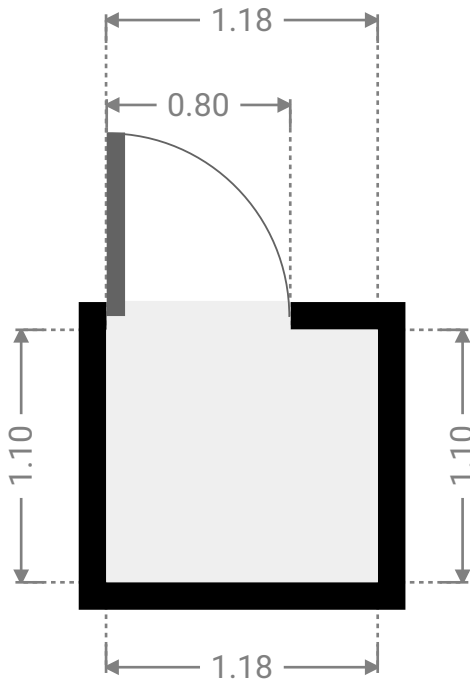
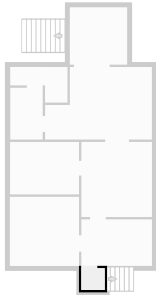
▼ **Other**
1st Floor

WIDTH: 2.90 m • LENGTH: 2.90 m
AREA: 8.41 m² • PERIMETER: 11.60 m



▼ **Other**
1st Floor

WIDTH: 1.18 m • LENGTH: 1.10 m
AREA: 1.30 m² • PERIMETER: 4.57 m



▼ **Toilet**
1st Floor

WIDTH: 1.64 m • LENGTH: 0.93 m
AREA: 1.53 m² • PERIMETER: 5.14 m

