

# 4 Wiggington Street

## Ground Floor



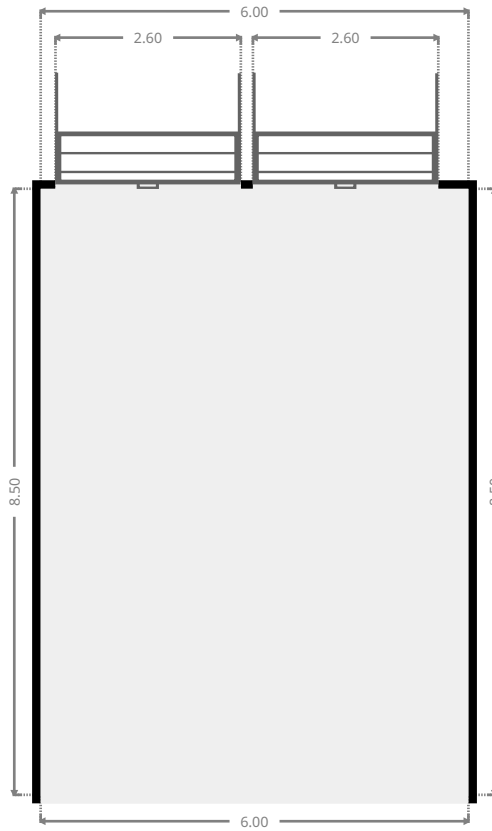
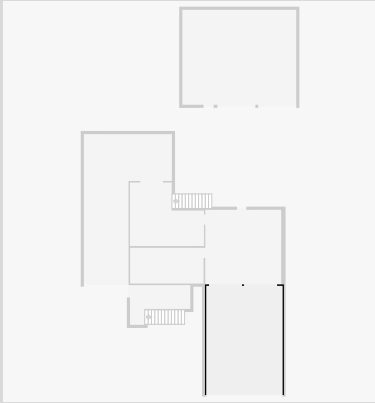
THIS FLOORPLAN IS PROVIDED WITHOUT WARRANTY OF ANY KIND. SENSOPIA DISCLAIMS ANY WARRANTY INCLUDING, WITHOUT LIMITATION, SATISFACTORY QUALITY OR ACCURACY OF DIMENSIONS.



# 4 Wiggington Street

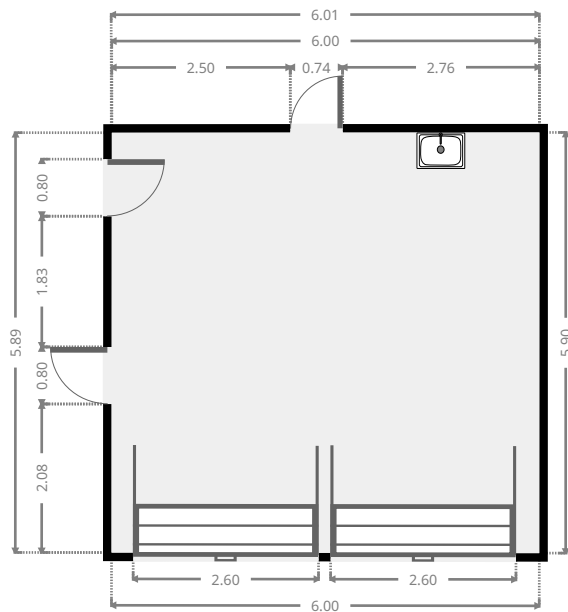
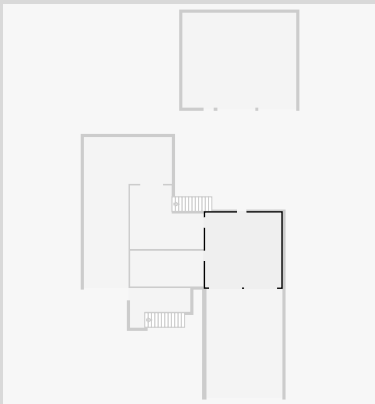
## Carport

Width: 6.00 m  
 Length: 8.50 m  
 Area: 51.00 m<sup>2</sup>  
 Perimeter: 29.00 m



## Garage

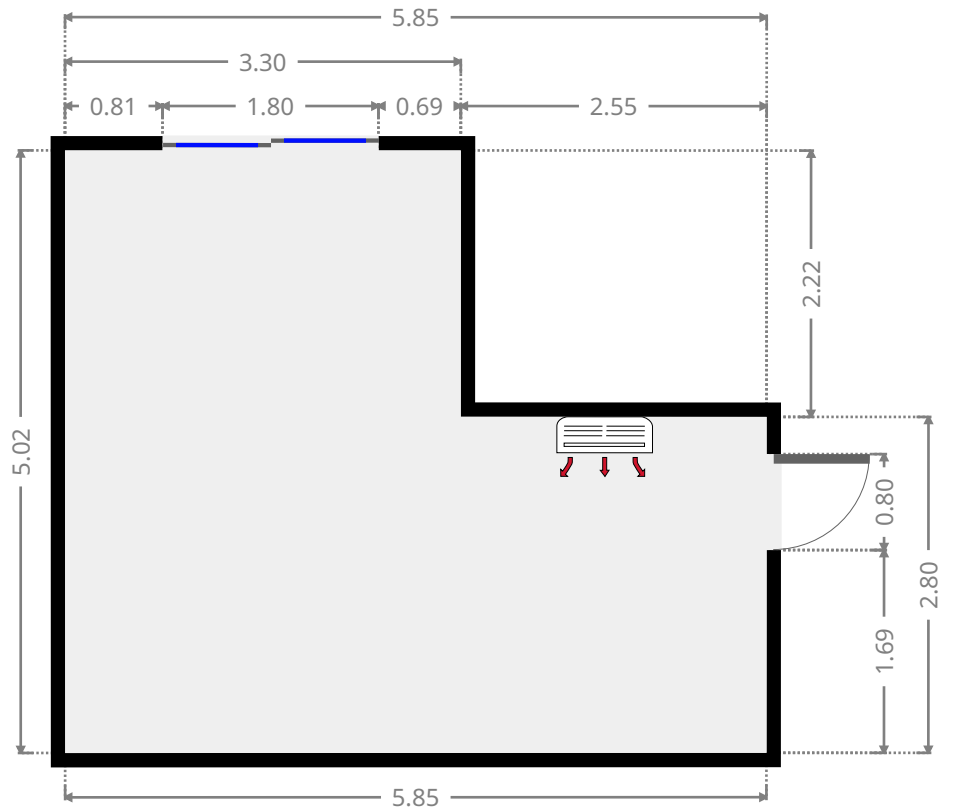
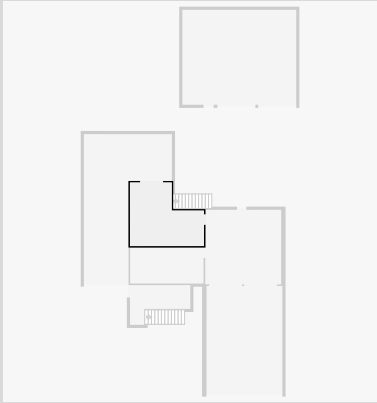
Width: 5.90 m  
 Length: 6.01 m  
 Area: 35.36 m<sup>2</sup>  
 Perimeter: 23.79 m



# 4 Wiggington Street

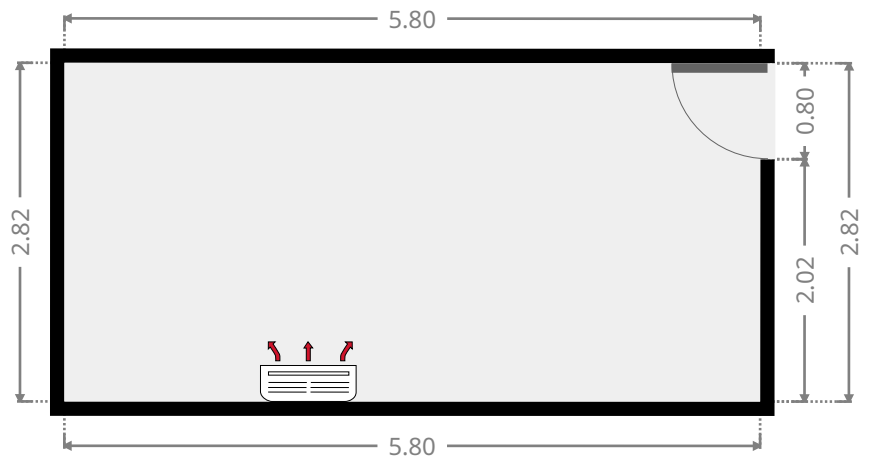
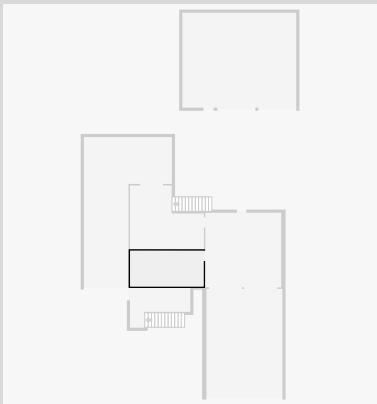
## Living Room

Width: 5.02 m  
Length: 5.85 m  
Area: 23.71 m<sup>2</sup>  
Perimeter: 21.74 m



## Bedroom

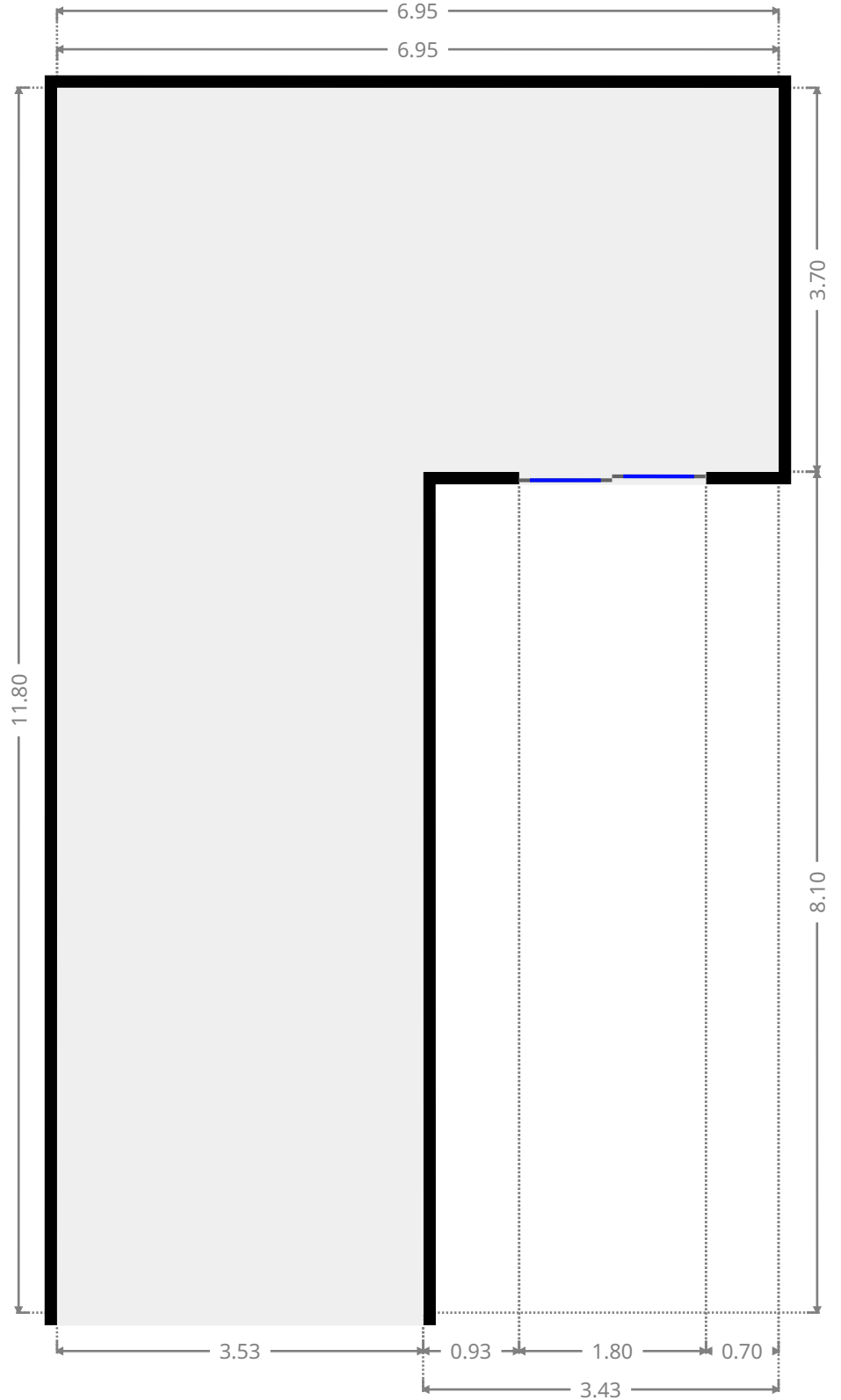
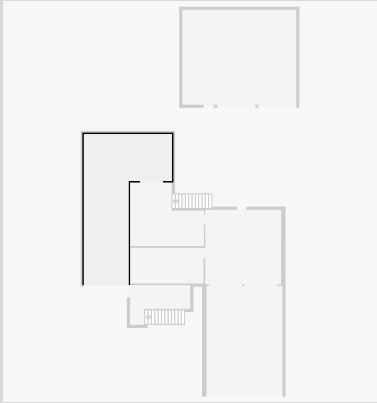
Width: 2.82 m  
Length: 5.80 m  
Area: 16.37 m<sup>2</sup>  
Perimeter: 17.24 m



# 4 Wiggington Street

## Other

Width: 6.95 m  
Length: 11.80 m  
Area: 54.32 m<sup>2</sup>  
Perimeter: 37.51 m

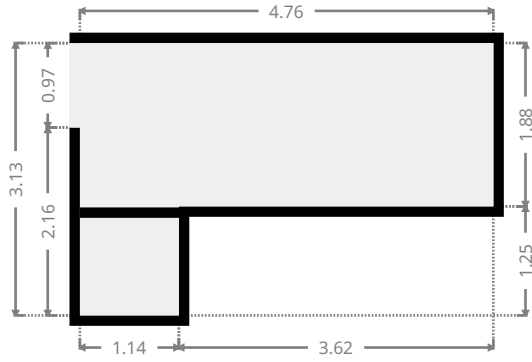
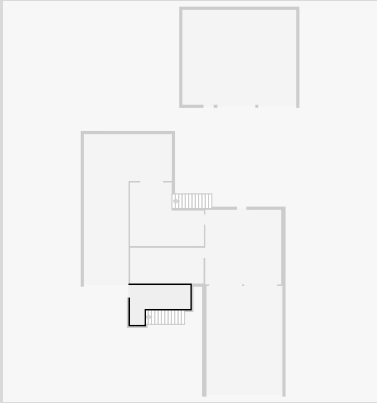


THIS FLOORPLAN IS PROVIDED WITHOUT WARRANTY OF ANY KIND. SENSOPIA DISCLAIMS ANY WARRANTY INCLUDING, WITHOUT LIMITATION, SATISFACTORY QUALITY OR ACCURACY OF DIMENSIONS.

# 4 Wiggington Street

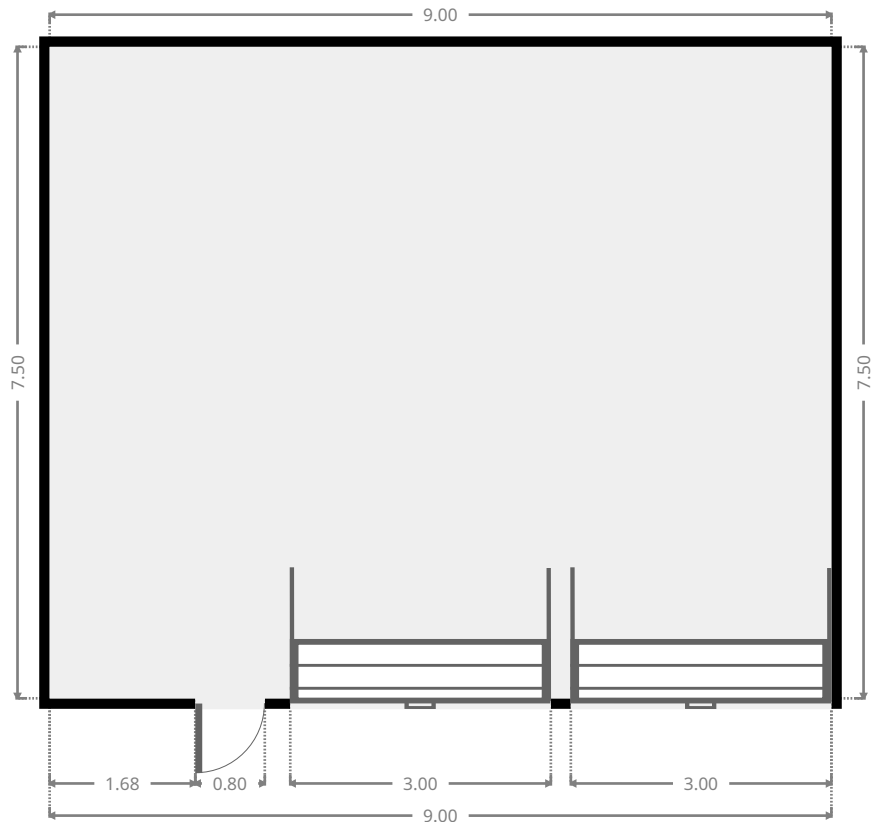
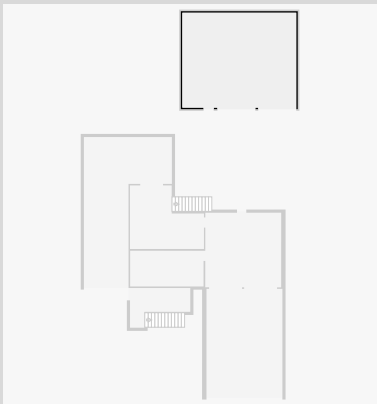
## Other

Width: 3.13 m  
Length: 4.76 m  
Area: 10.38 m<sup>2</sup>  
Perimeter: 15.79 m



## Shed

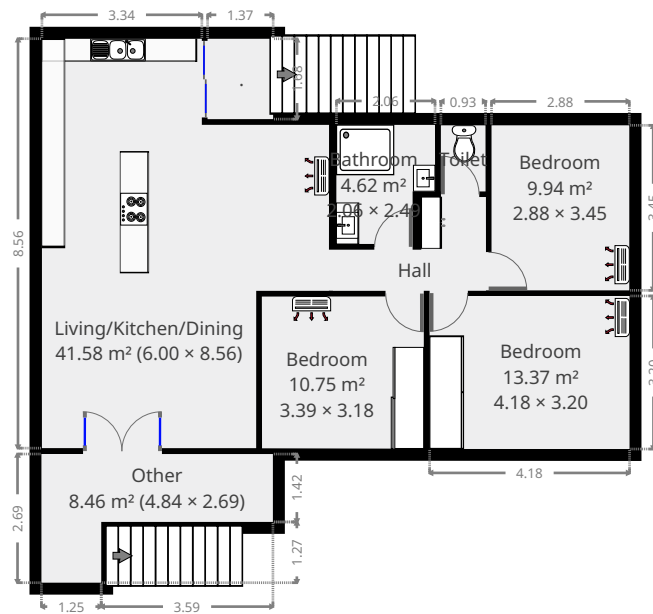
Width: 7.50 m  
Length: 9.00 m  
Area: 67.50 m<sup>2</sup>  
Perimeter: 33.00 m



THIS FLOORPLAN IS PROVIDED WITHOUT WARRANTY OF ANY KIND. SENSOPIA DISCLAIMS ANY WARRANTY INCLUDING, WITHOUT LIMITATION, SATISFACTORY QUALITY OR ACCURACY OF DIMENSIONS.

# 4 Wiggington Street

## 1st Floor



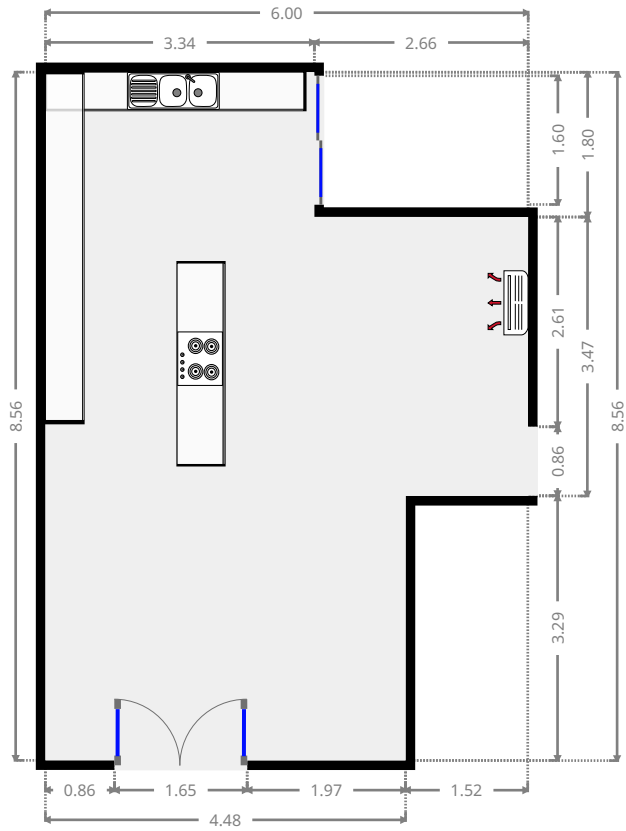
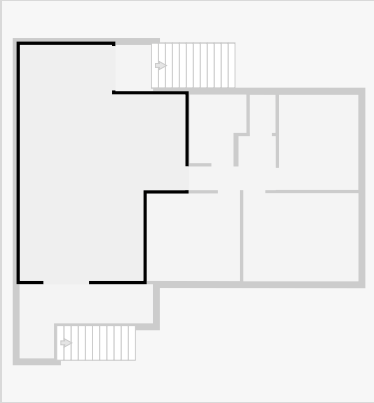
THIS FLOORPLAN IS PROVIDED WITHOUT WARRANTY OF ANY KIND. SENSOPIA DISCLAIMS ANY WARRANTY INCLUDING, WITHOUT LIMITATION, SATISFACTORY QUALITY OR ACCURACY OF DIMENSIONS.



# 4 Wiggington Street

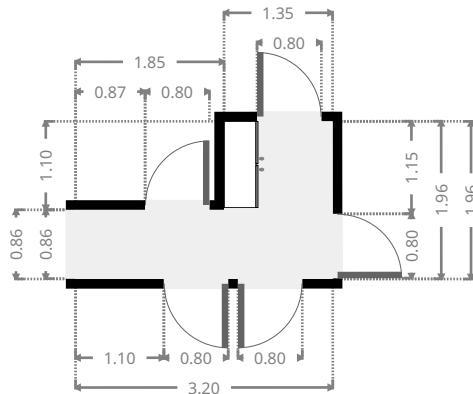
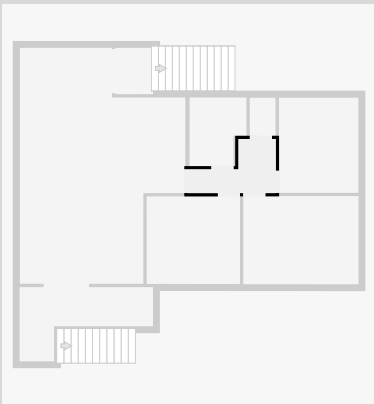
## Living/Kitchen/Dining

Width: 6.00 m  
 Length: 8.56 m  
 Area: 41.58 m<sup>2</sup>  
 Perimeter: 29.12 m



## Hall

Width: 1.96 m  
 Length: 3.20 m  
 Area: 4.24 m<sup>2</sup>  
 Perimeter: 10.32 m



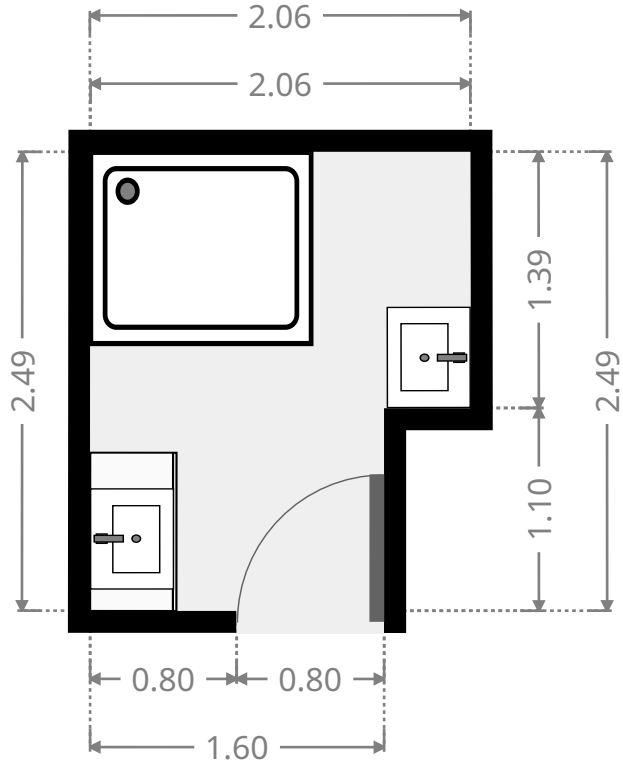
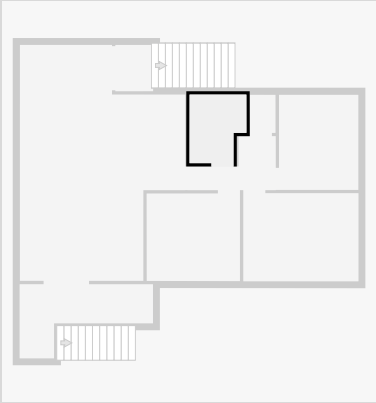
THIS FLOORPLAN IS PROVIDED WITHOUT WARRANTY OF ANY KIND. SENSOPIA DISCLAIMS ANY WARRANTY INCLUDING, WITHOUT LIMITATION, SATISFACTORY QUALITY OR ACCURACY OF DIMENSIONS.



# 4 Wiggington Street

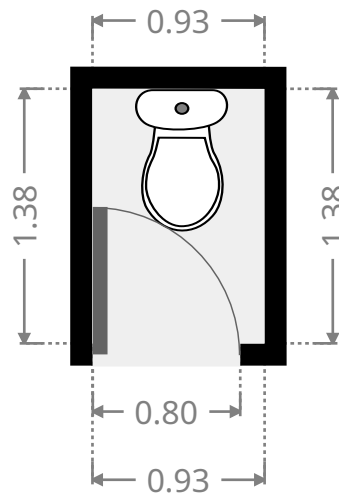
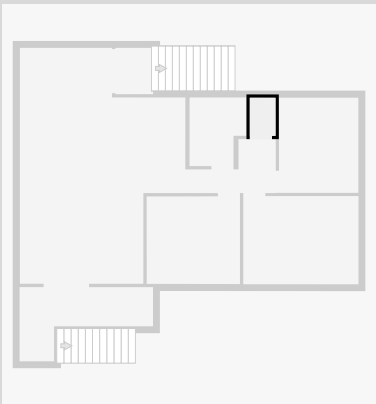
## Bathroom

Width: 2.06 m  
Length: 2.49 m  
Area: 4.62 m<sup>2</sup>  
Perimeter: 9.10 m



## Toilet / Half Bath

Width: 0.93 m  
Length: 1.38 m  
Area: 1.29 m<sup>2</sup>  
Perimeter: 4.63 m

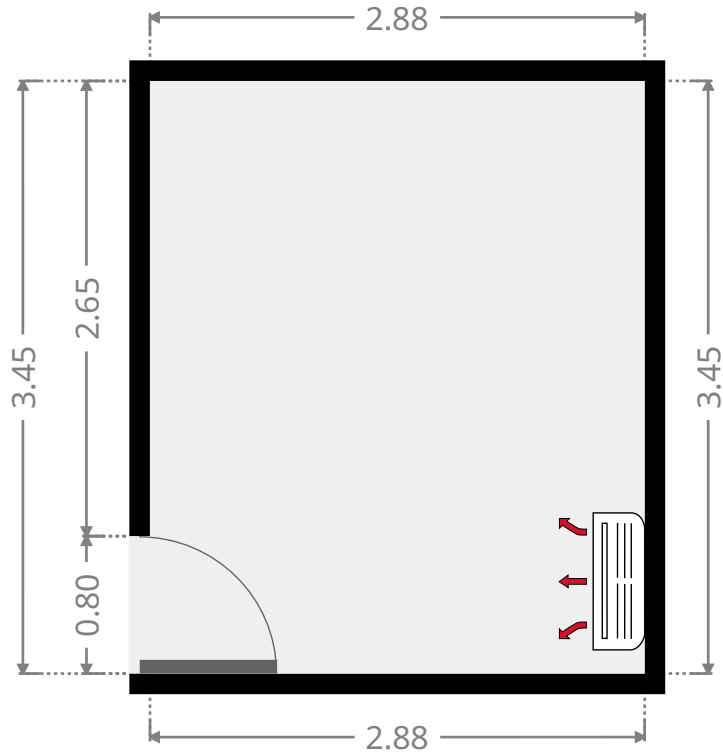
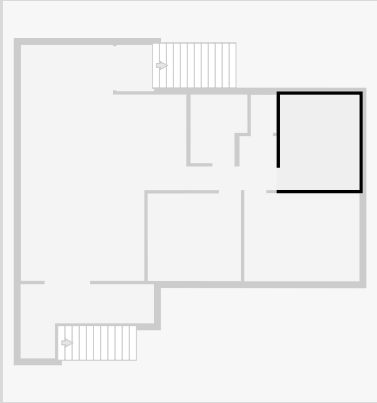




# 4 Wiggington Street

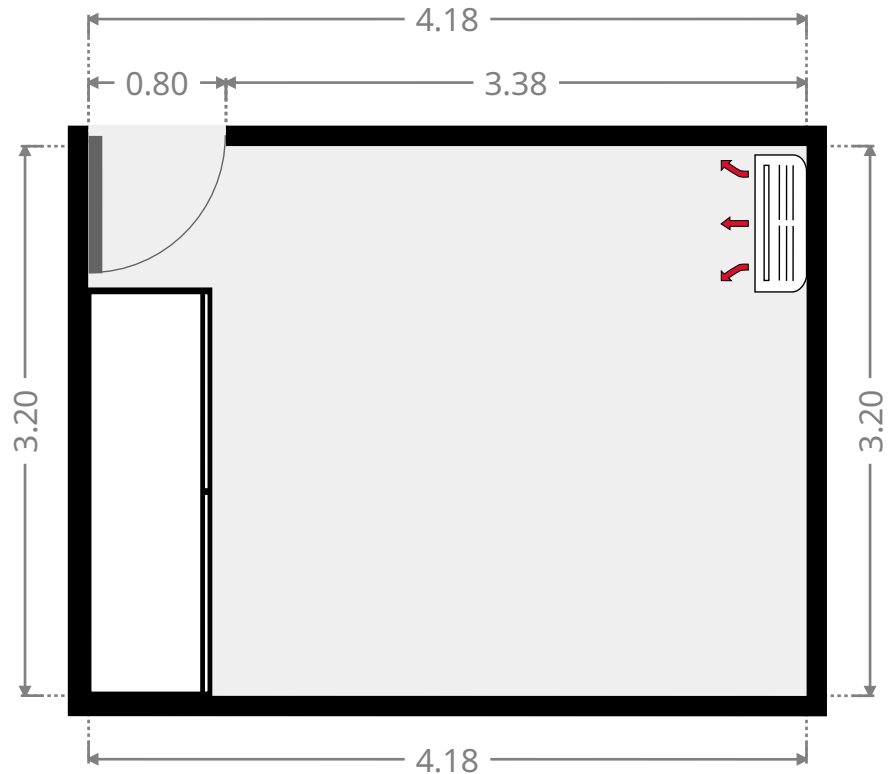
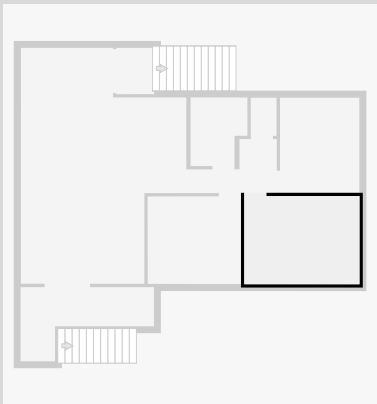
## Bedroom

Width: 2.88 m  
 Length: 3.45 m  
 Area: 9.94 m<sup>2</sup>  
 Perimeter: 12.66 m

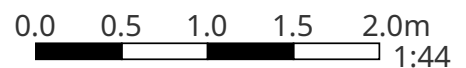


## Bedroom

Width: 3.20 m  
 Length: 4.18 m  
 Area: 13.37 m<sup>2</sup>  
 Perimeter: 14.76 m



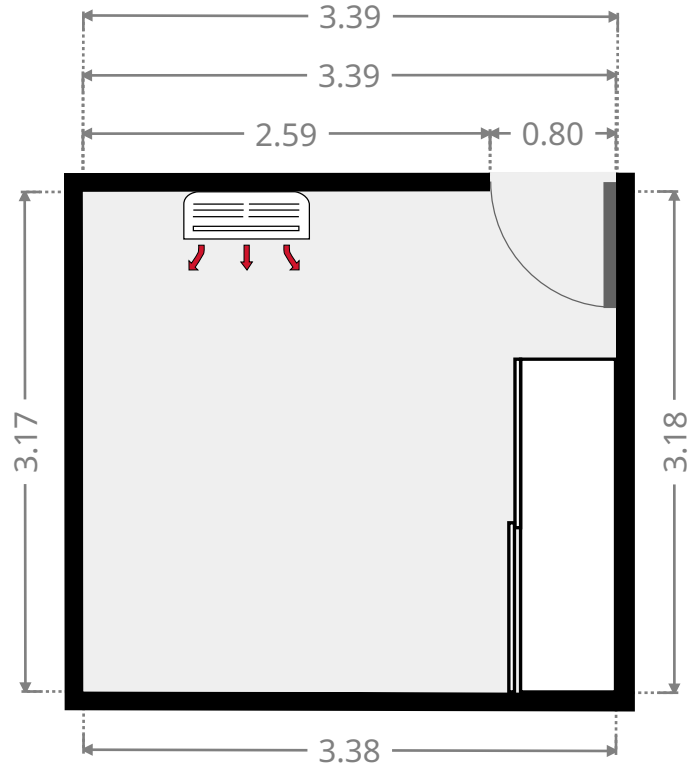
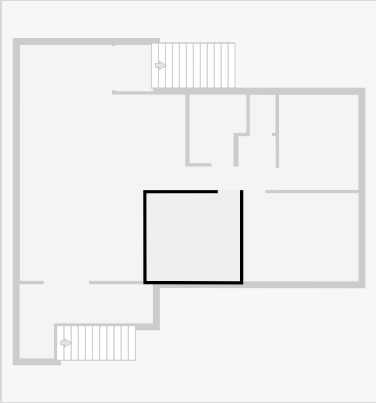
THIS FLOORPLAN IS PROVIDED WITHOUT WARRANTY OF ANY KIND. SENSOPIA DISCLAIMS ANY WARRANTY INCLUDING, WITHOUT LIMITATION, SATISFACTORY QUALITY OR ACCURACY OF DIMENSIONS.



# 4 Wiggington Street

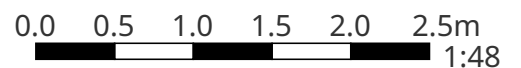
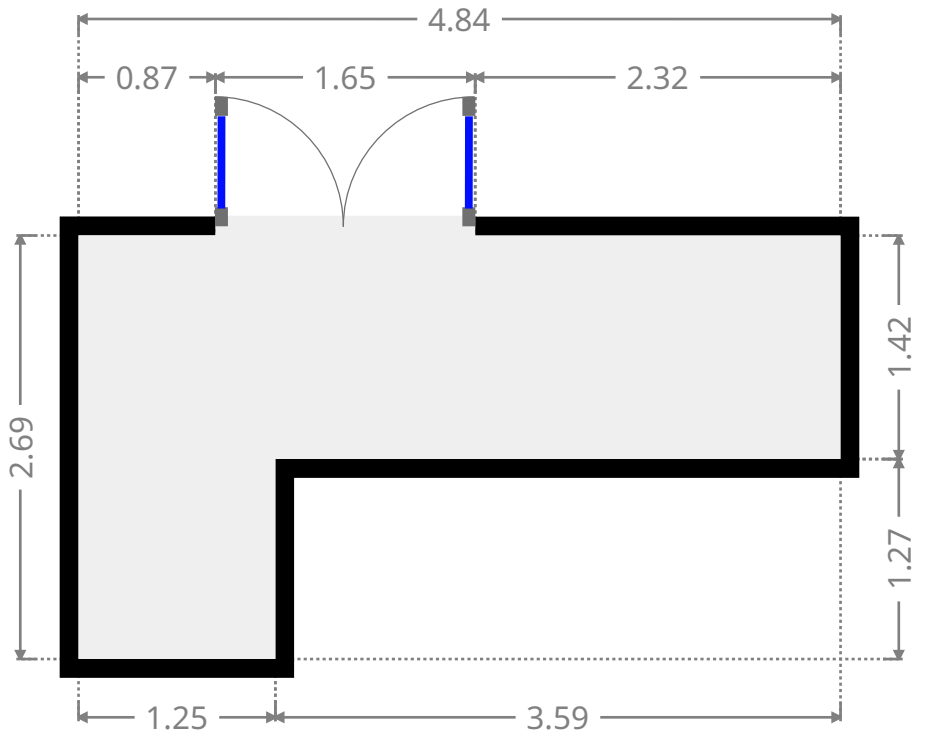
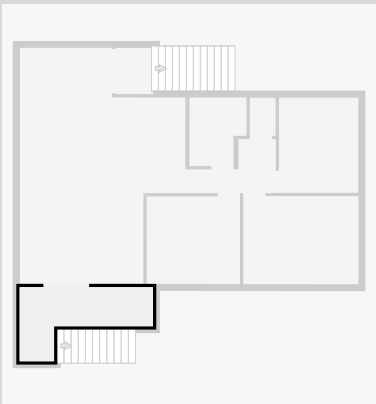
## Bedroom

Width: 3.18 m  
 Length: 3.39 m  
 Area: 10.75 m<sup>2</sup>  
 Perimeter: 13.12 m



## Other

Width: 2.69 m  
 Length: 4.84 m  
 Area: 8.46 m<sup>2</sup>  
 Perimeter: 15.06 m



THIS FLOORPLAN IS PROVIDED WITHOUT WARRANTY OF ANY KIND. SENSOPIA DISCLAIMS ANY WARRANTY INCLUDING, WITHOUT LIMITATION, SATISFACTORY QUALITY OR ACCURACY OF DIMENSIONS.

# 4 Wiggington Street

•  
Width: 1.37 m  
Length: 1.68 m  
Area: 2.30 m<sup>2</sup>  
Perimeter: 6.10 m

