

# 4 Wanoombal street

**SUBMITTED BY**

Ray White Rockhampton Casey  
stockers@cqoz.com

---

**CREATED ON**

2022-05-09

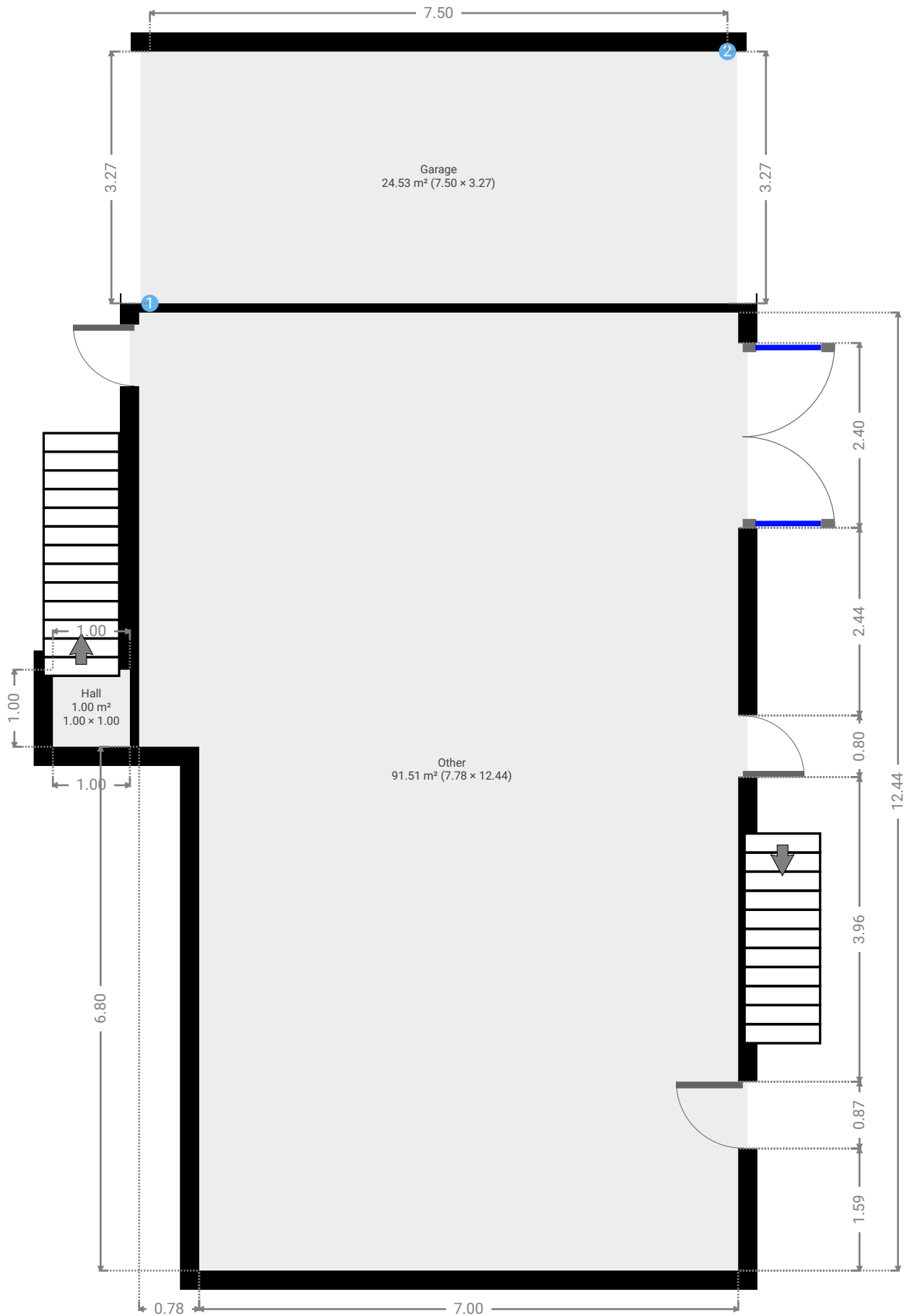
---

**Floors**

2

---

▼ Ground Floor

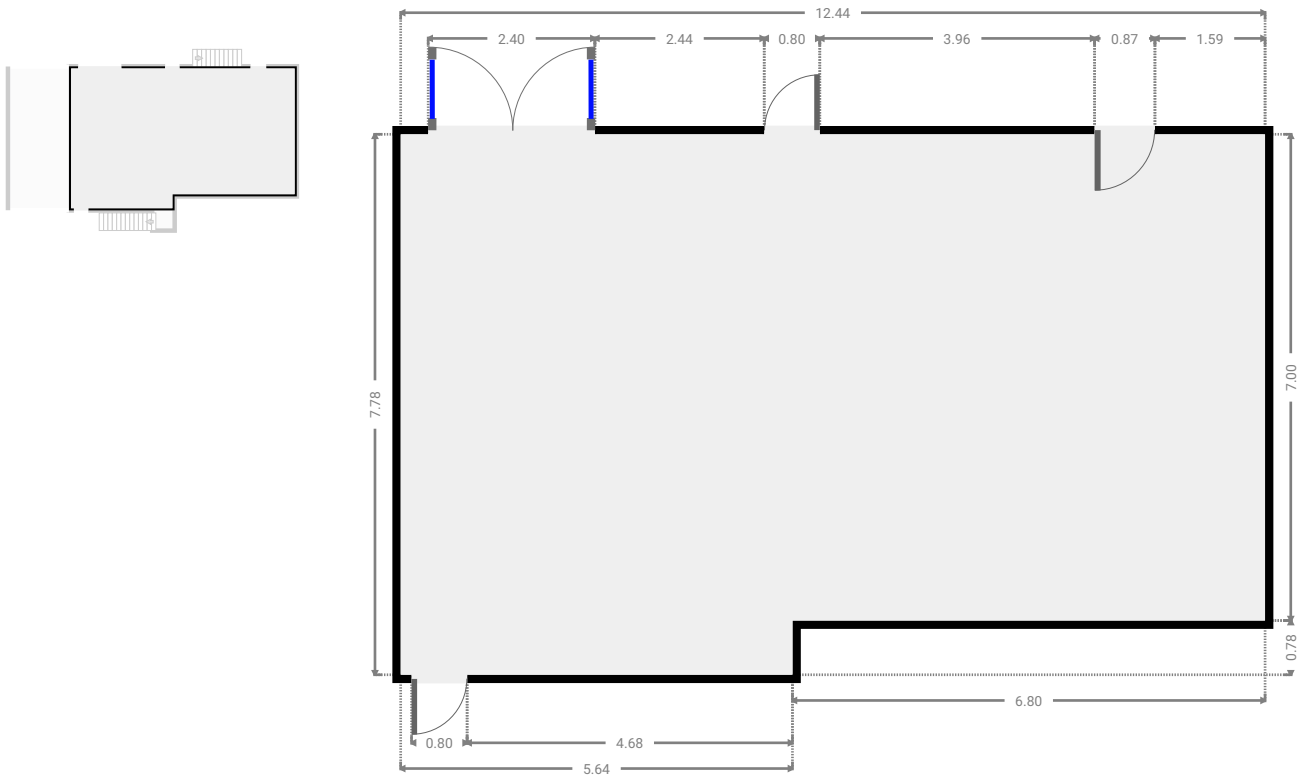


# 4 Wanoombal street

FLOORS: 2

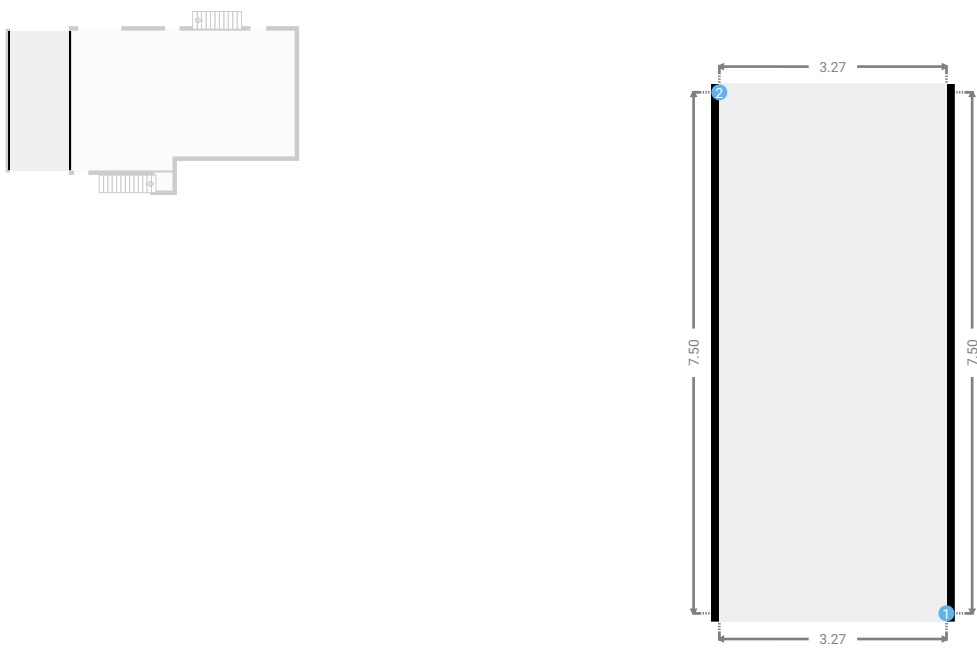
## ▼ Other Ground Floor

WIDTH: 12.44 m • LENGTH: 7.78 m  
AREA: 91.51 m<sup>2</sup> • PERIMETER: 40.45 m



## ▼ Garage Ground Floor

WIDTH: 3.27 m • LENGTH: 7.50 m  
AREA: 24.53 m<sup>2</sup> • PERIMETER: 21.54 m



FLOORS: 2

---

## ▼ Garage/Ground Floor

---

**1 OPENING**

Height  
0.00 m



---

**2 OPENING**

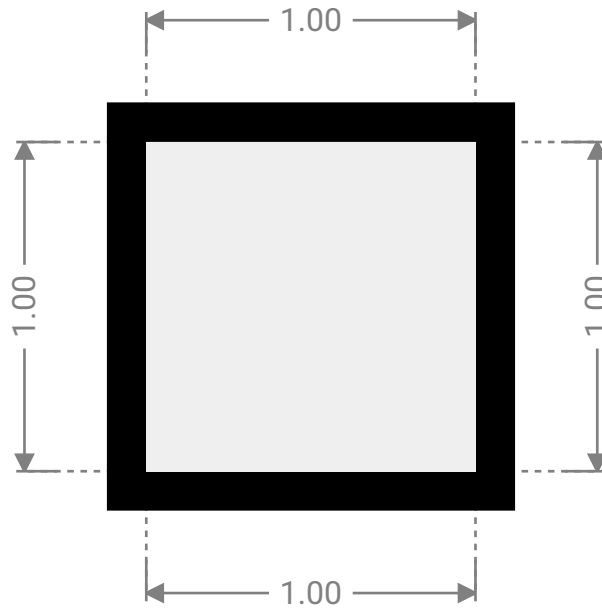
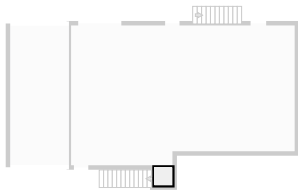
Height  
0.00 m



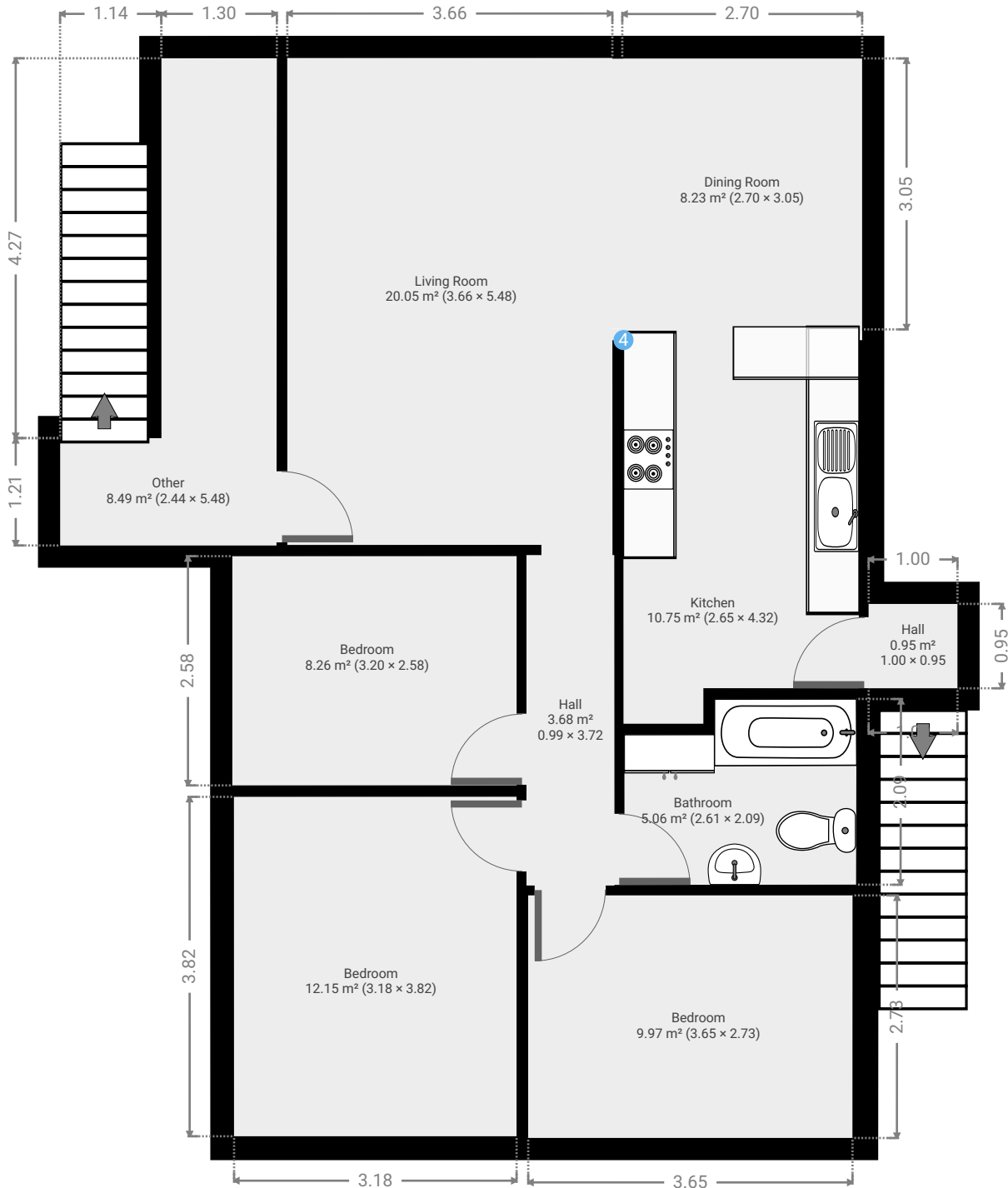
FLOORS: 2

▼ **Hall**  
Ground Floor

WIDTH: 1.00 m • LENGTH: 1.00 m  
AREA: 1.00 m<sup>2</sup> • PERIMETER: 4.00 m



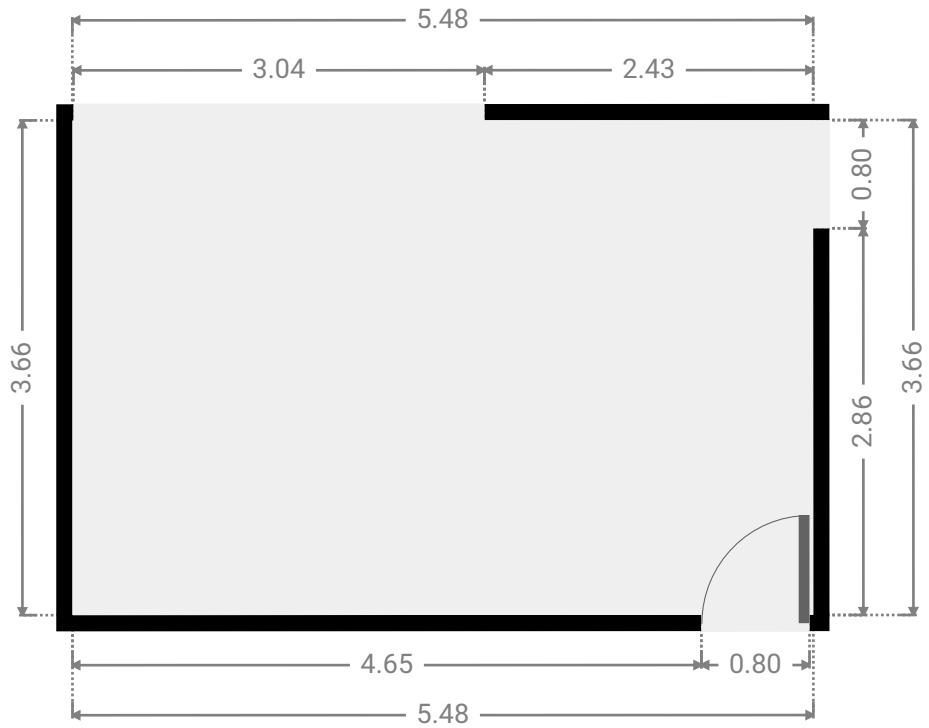
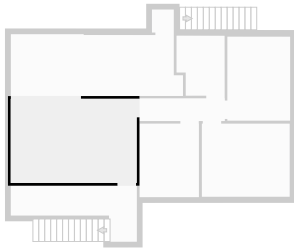
▼ 1st Floor



FLOORS: 2

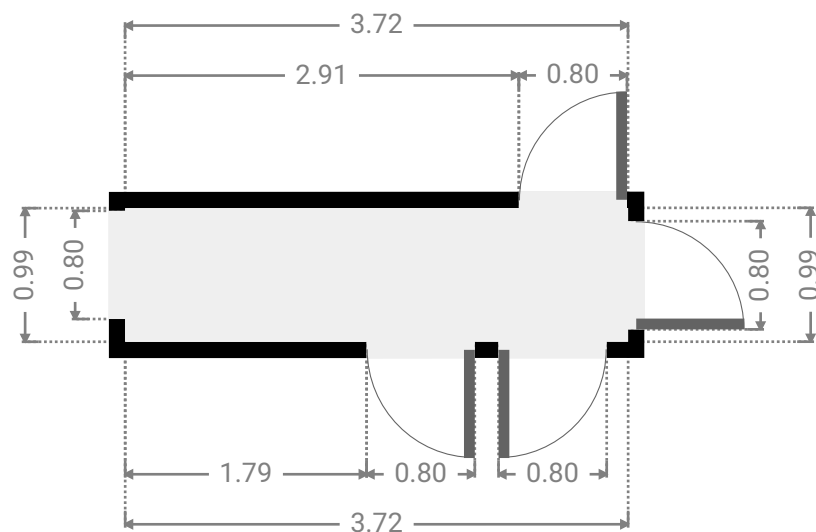
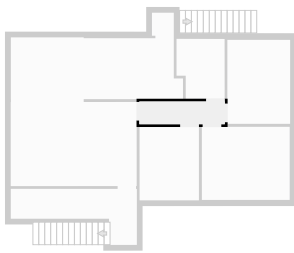
▼ Living Room  
1st Floor

WIDTH: 5.48 m • LENGTH: 3.66 m  
AREA: 20.05 m<sup>2</sup> • PERIMETER: 18.28 m



▼ Hall  
1st Floor

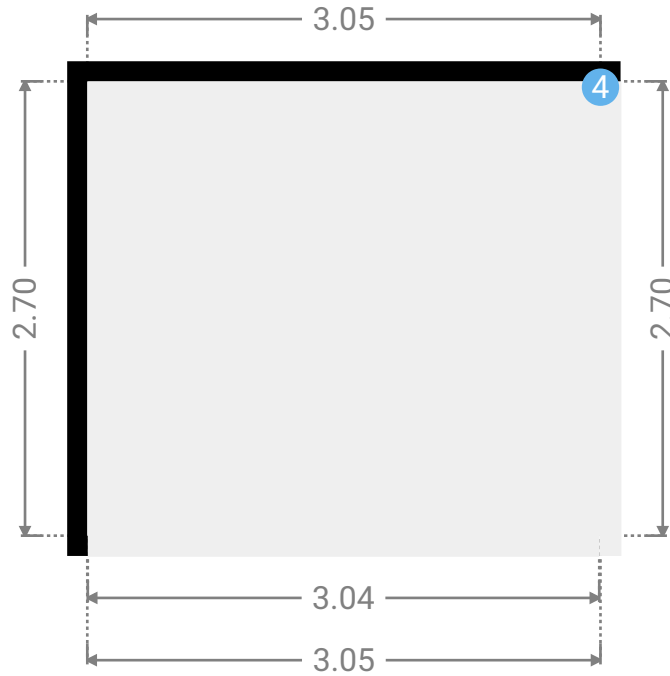
WIDTH: 3.72 m • LENGTH: 0.99 m  
AREA: 3.68 m<sup>2</sup> • PERIMETER: 9.42 m



FLOORS: 2

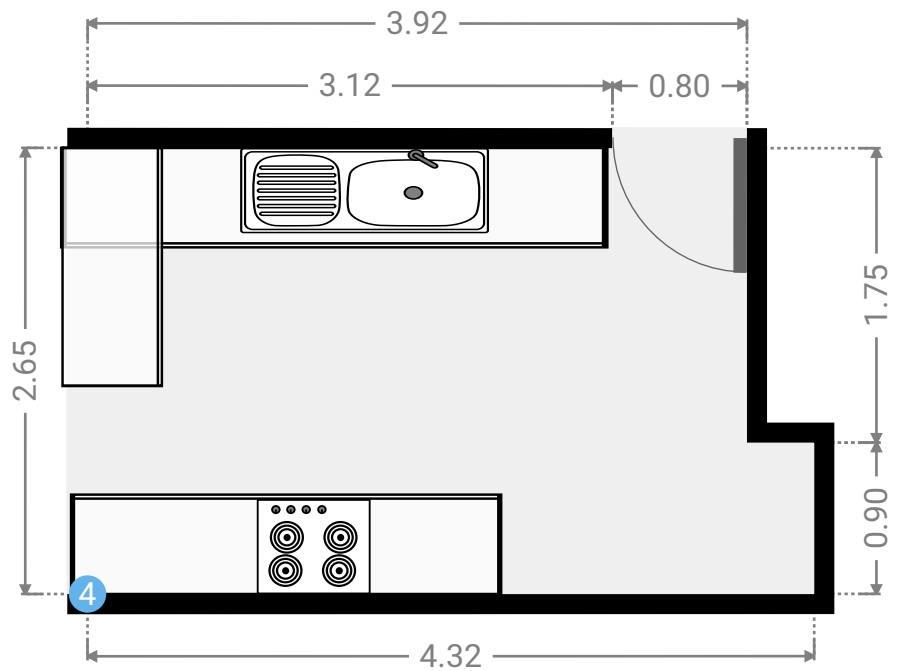
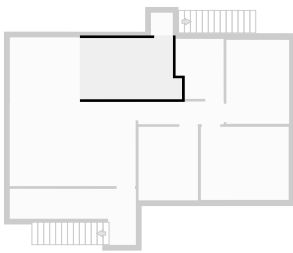
▼ Dining Room  
1st Floor

WIDTH: 3.05 m • LENGTH: 2.70 m  
AREA: 8.23 m<sup>2</sup> • PERIMETER: 11.50 m



▼ Kitchen  
1st Floor

WIDTH: 4.32 m • LENGTH: 2.65 m  
AREA: 10.75 m<sup>2</sup> • PERIMETER: 13.94 m





## ▼ Kitchen/1st Floor

---

### 4 OPENING

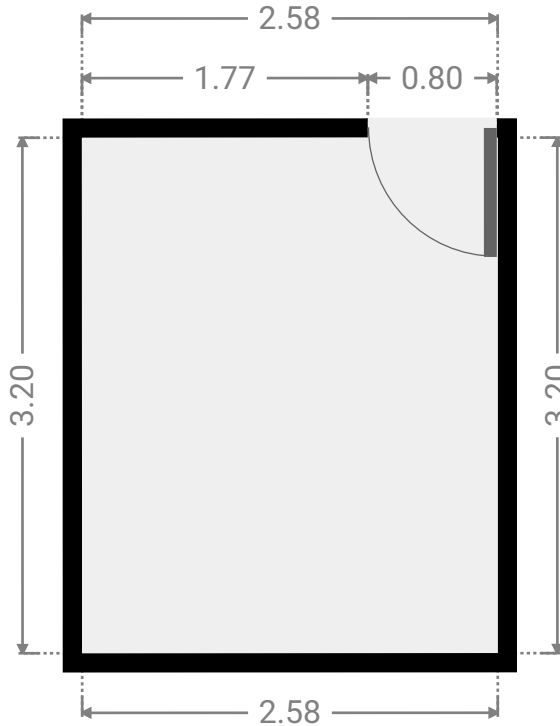
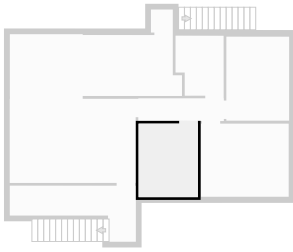
Height  
0.00 m



FLOORS: 2

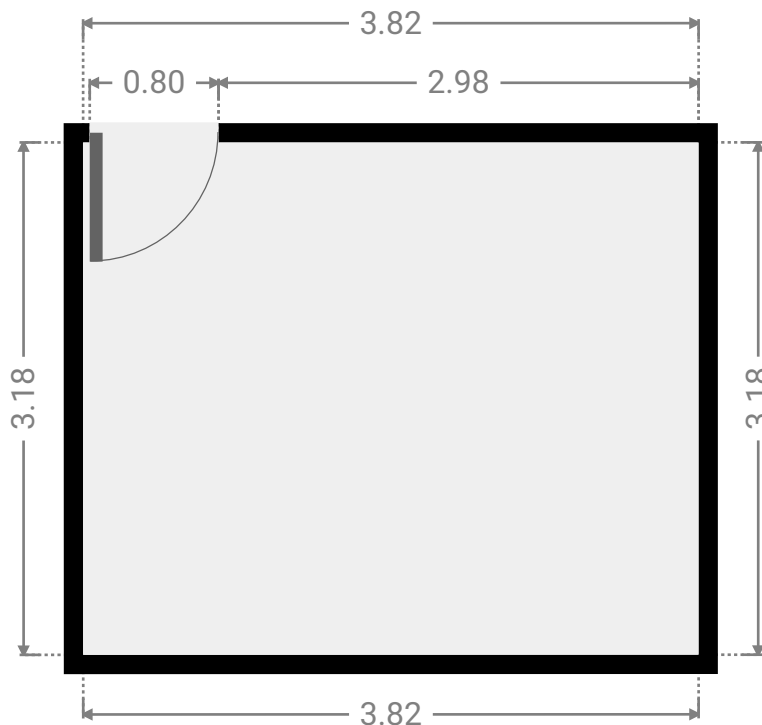
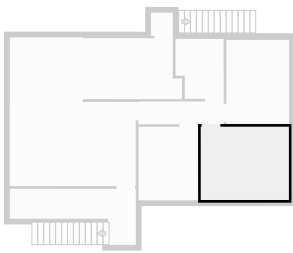
▼ **Bedroom**  
1st Floor

WIDTH: 2.58 m • LENGTH: 3.20 m  
AREA: 8.26 m<sup>2</sup> • PERIMETER: 11.56 m



▼ **Bedroom**  
1st Floor

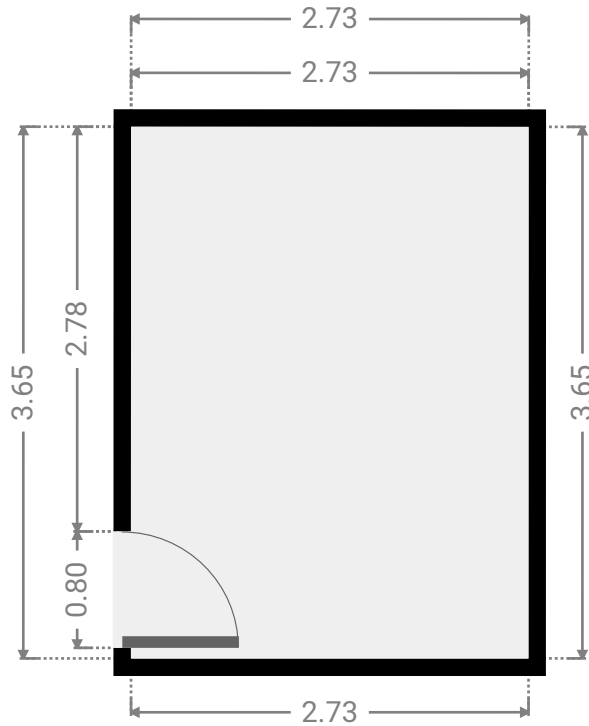
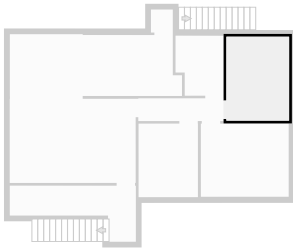
WIDTH: 3.82 m • LENGTH: 3.18 m  
AREA: 12.15 m<sup>2</sup> • PERIMETER: 14.00 m



FLOORS: 2

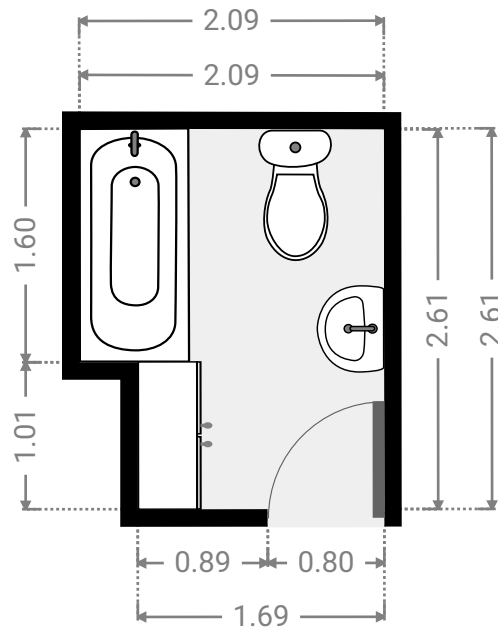
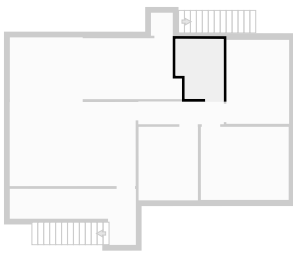
▼ Bedroom  
1st Floor

WIDTH: 2.73 m • LENGTH: 3.65 m  
AREA: 9.97 m<sup>2</sup> • PERIMETER: 12.76 m



▼ Bathroom  
1st Floor

WIDTH: 2.09 m • LENGTH: 2.61 m  
AREA: 5.06 m<sup>2</sup> • PERIMETER: 9.40 m



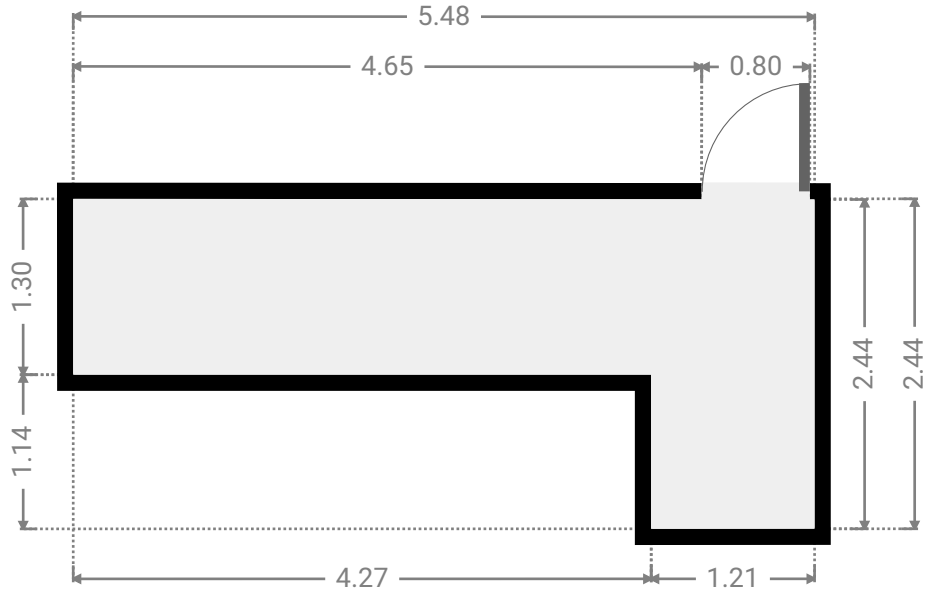
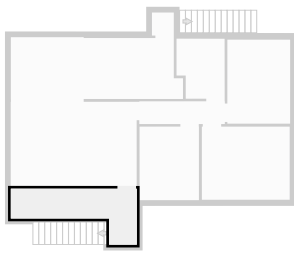
# 4 Wanoombal street

FLOORS: 2



## ▼ Other 1st Floor

WIDTH: 5.48 m • LENGTH: 2.44 m  
AREA: 8.49 m<sup>2</sup> • PERIMETER: 15.84 m



## ▼ Hall 1st Floor

WIDTH: 0.95 m • LENGTH: 1.00 m  
AREA: 0.95 m<sup>2</sup> • PERIMETER: 3.90 m

