

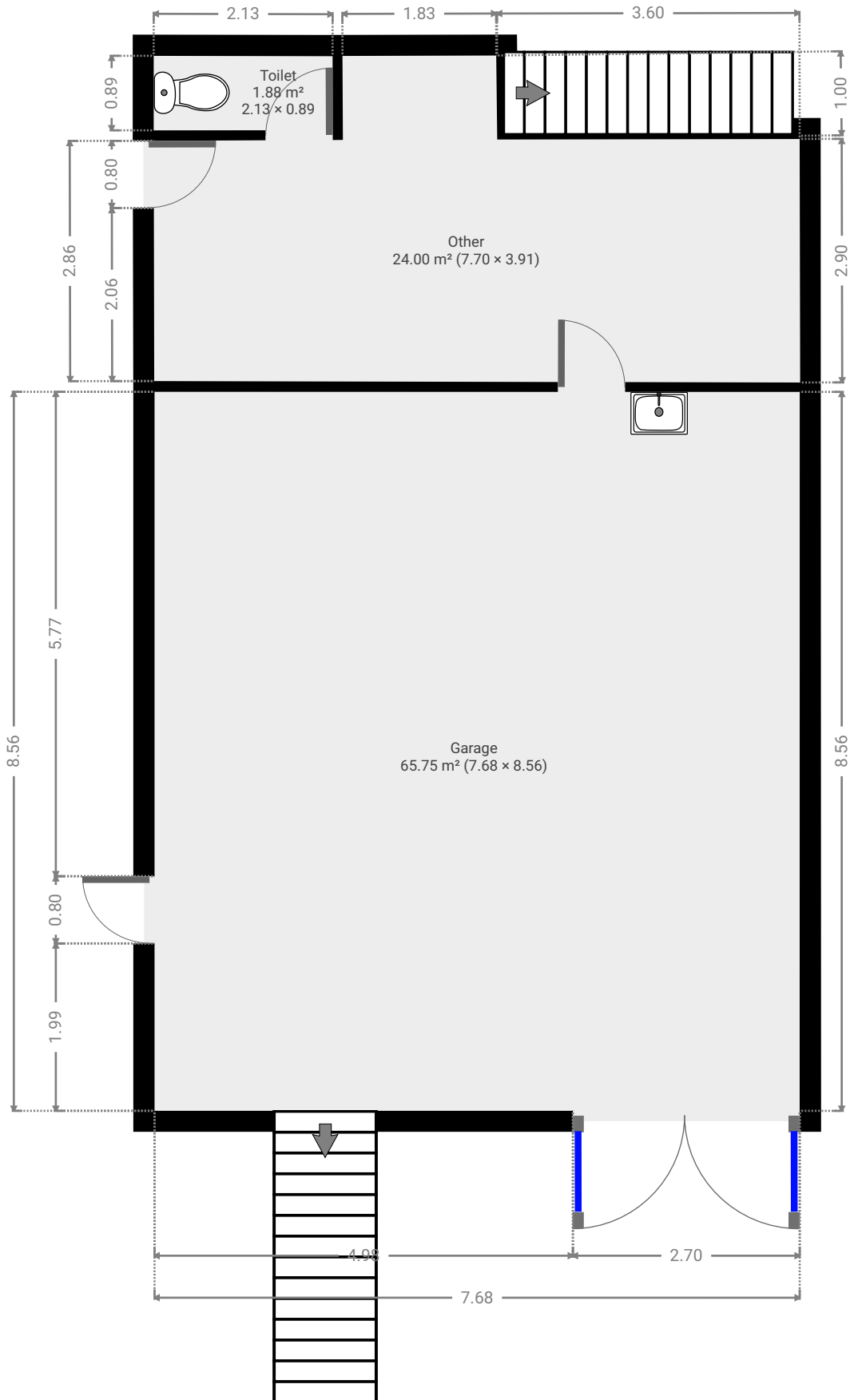
4 Tung Yeen Street

SUBMITTED BY
Janelle Casey

CREATED ON
2021-10-11

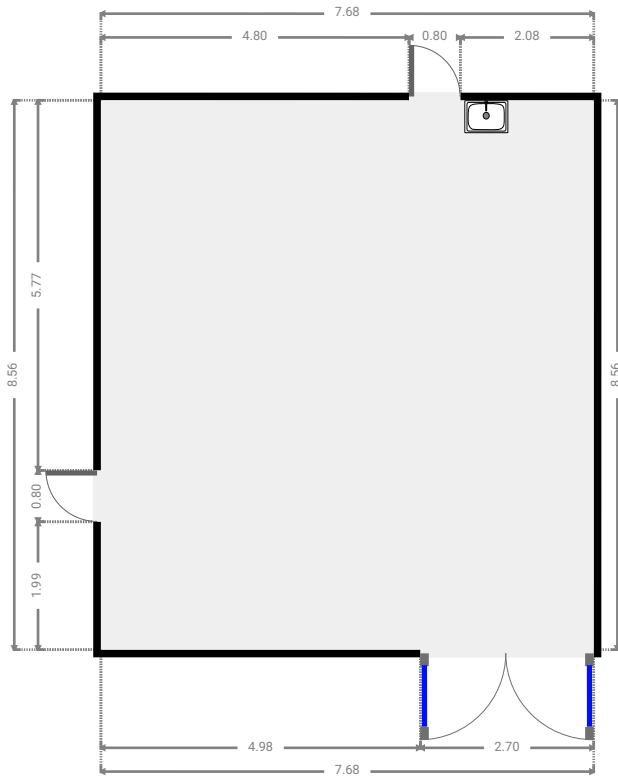
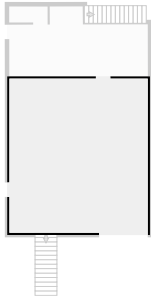
Floors
2

▼ Ground Floor



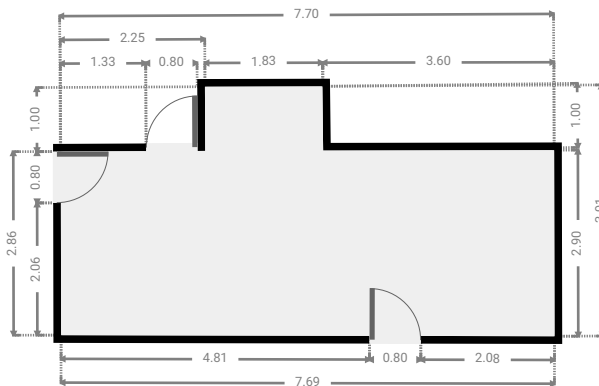
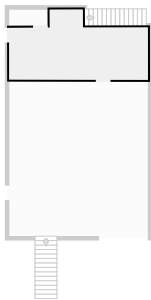
▼ Garage Ground Floor

WIDTH: 7.68 m • LENGTH: 8.56 m
AREA: 65.75 m² • PERIMETER: 32.48 m



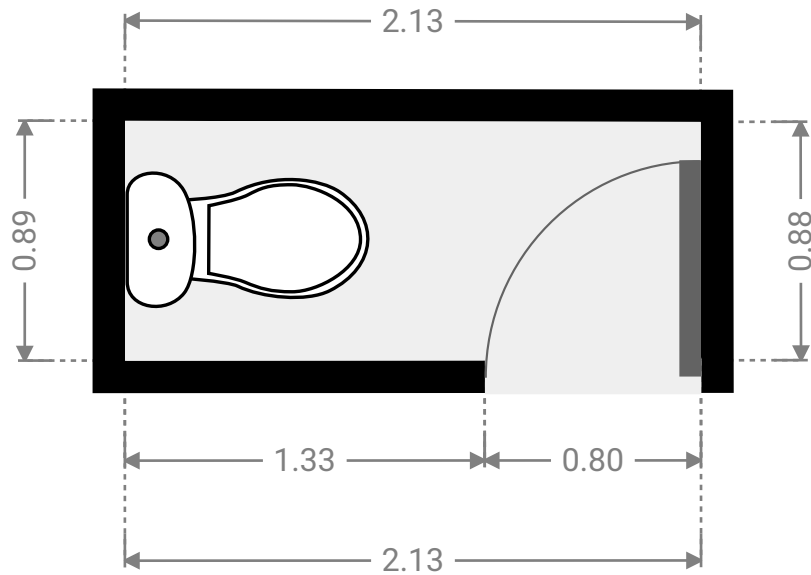
▼ Other Ground Floor

WIDTH: 7.70 m • LENGTH: 3.91 m
AREA: 24.00 m² • PERIMETER: 23.13 m

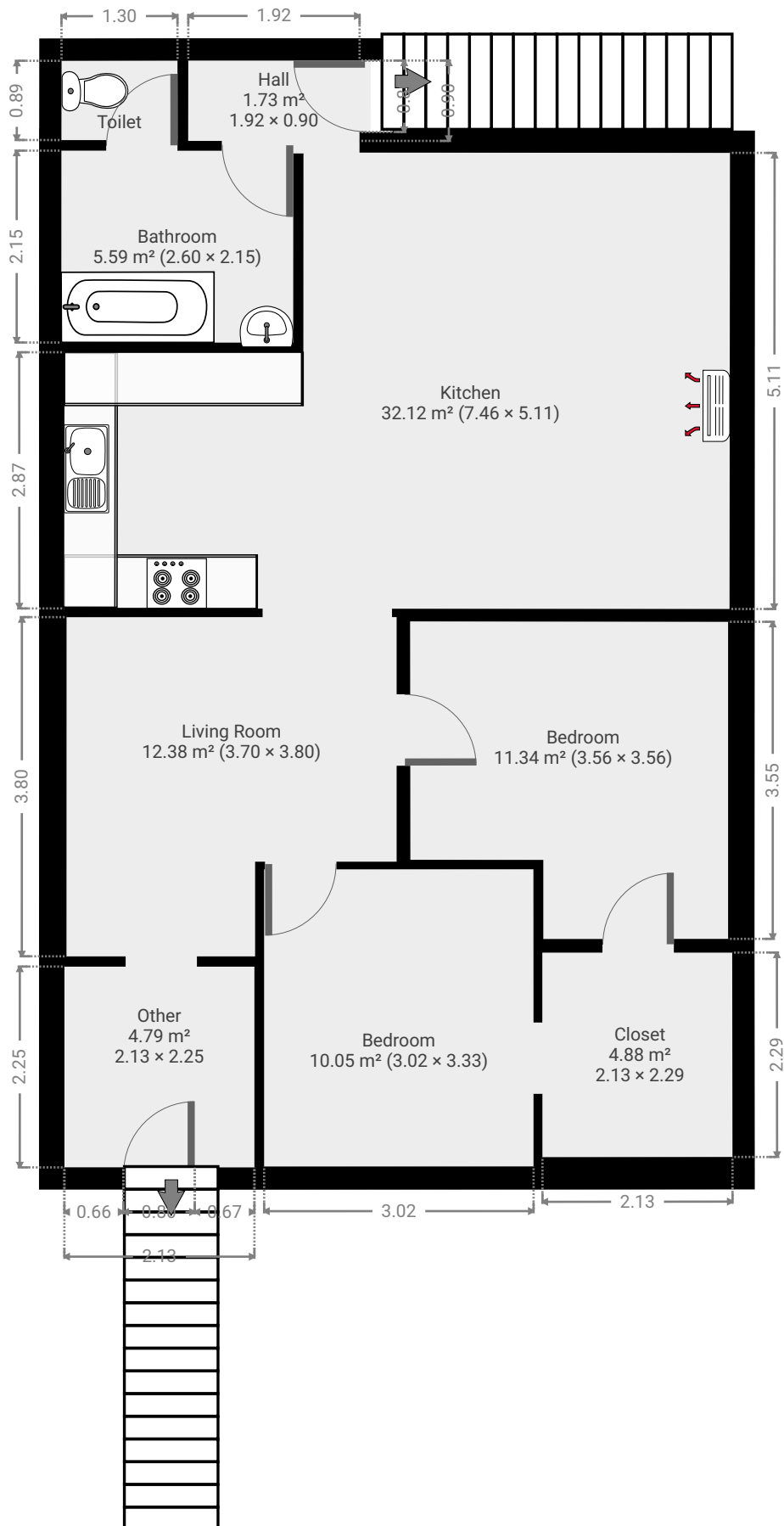


▼ Toilet
Ground Floor

WIDTH: 2.13 m • LENGTH: 0.89 m
AREA: 1.88 m² • PERIMETER: 6.03 m

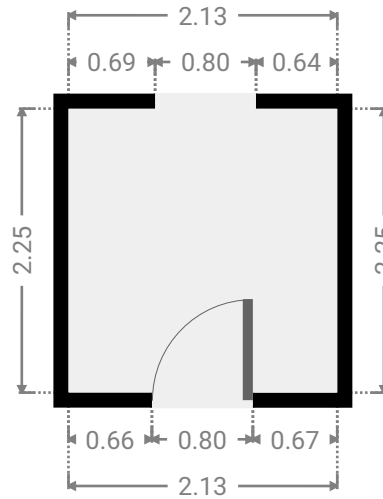
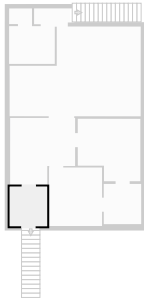


▼ 1st Floor



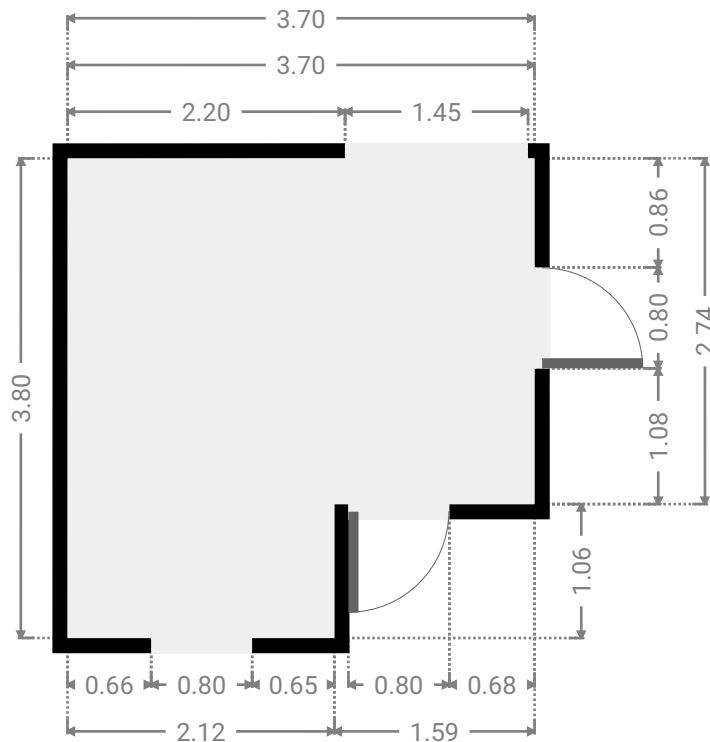
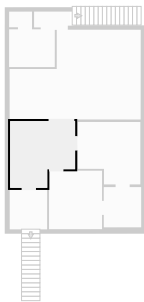
▼ Other
1st Floor

WIDTH: 2.13 m • LENGTH: 2.25 m
AREA: 4.79 m² • PERIMETER: 8.76 m



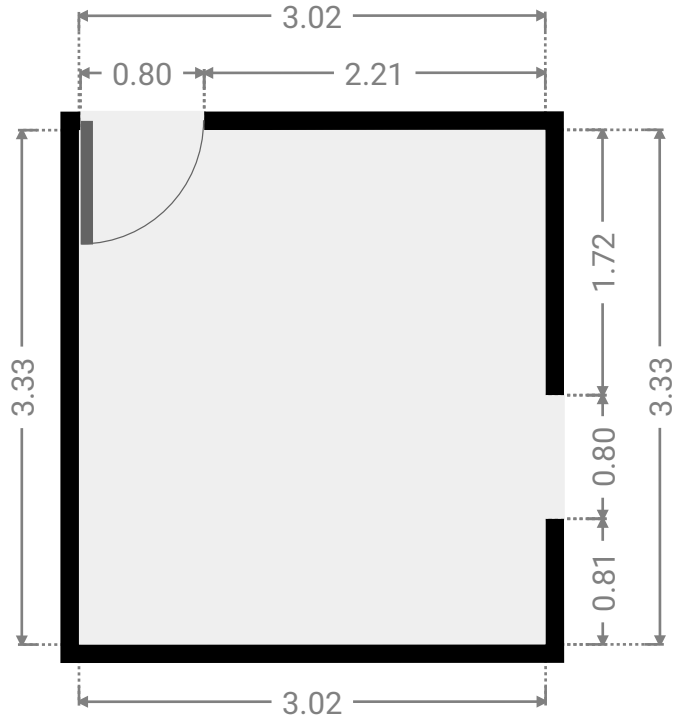
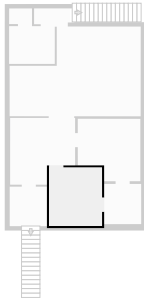
▼ Living Room
1st Floor

WIDTH: 3.70 m • LENGTH: 3.80 m
AREA: 12.38 m² • PERIMETER: 15.00 m



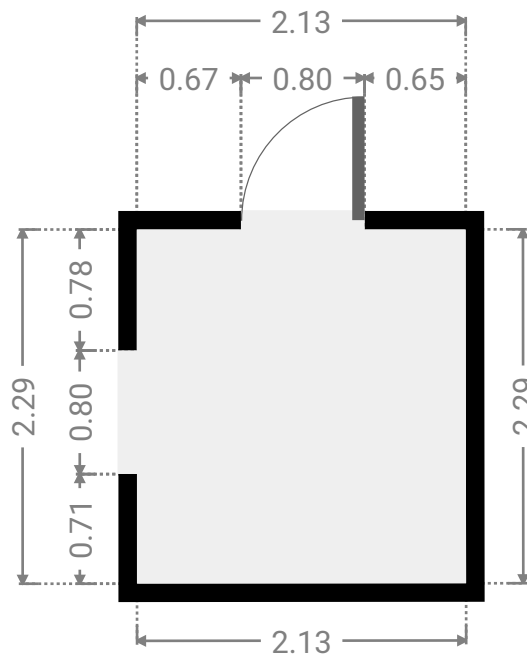
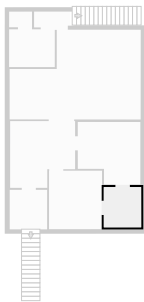
▼ Bedroom
1st Floor

WIDTH: 3.02 m • LENGTH: 3.33 m
AREA: 10.05 m² • PERIMETER: 12.70 m



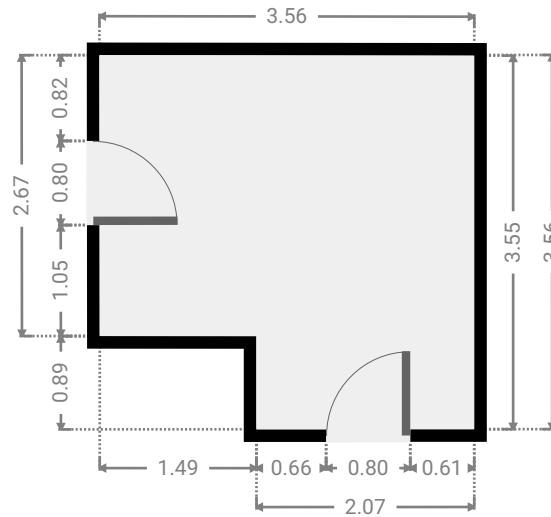
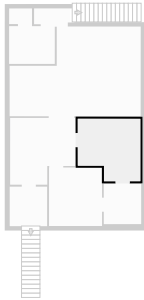
▼ Closet
1st Floor

WIDTH: 2.13 m • LENGTH: 2.29 m
AREA: 4.88 m² • PERIMETER: 8.84 m



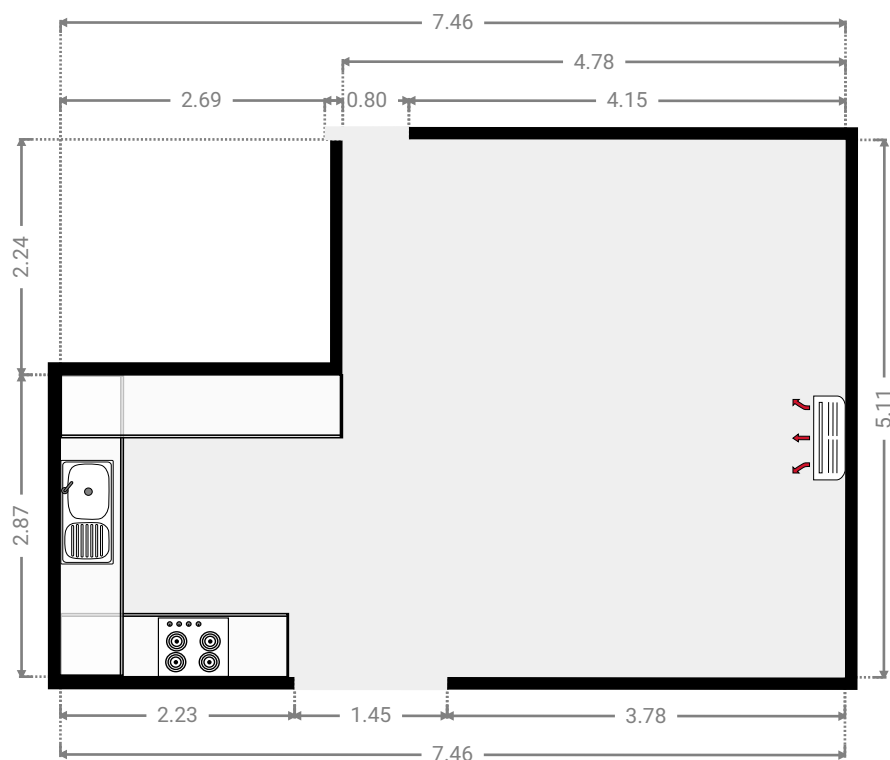
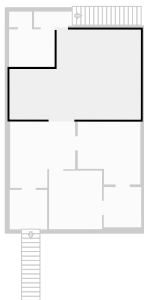
▼ **Bedroom**
1st Floor

WIDTH: 3.56 m • LENGTH: 3.56 m
AREA: 11.34 m² • PERIMETER: 14.23 m



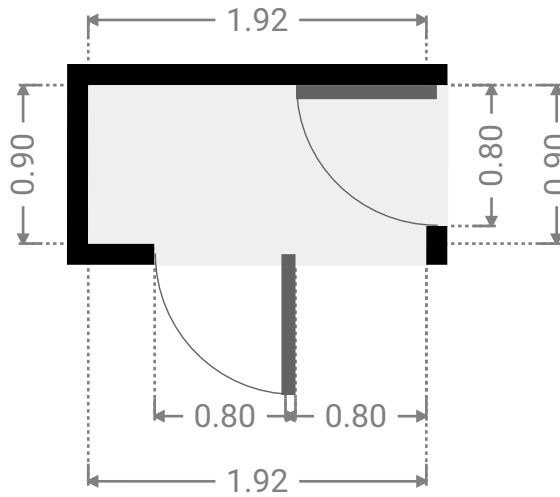
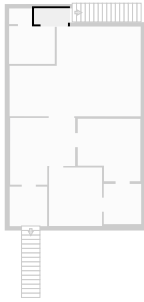
▼ **Kitchen**
1st Floor

WIDTH: 7.46 m • LENGTH: 5.11 m
AREA: 32.12 m² • PERIMETER: 25.14 m



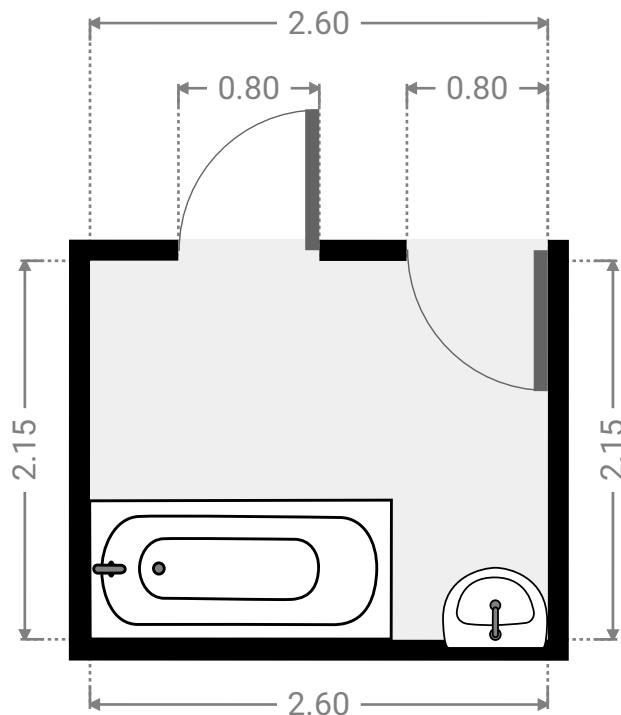
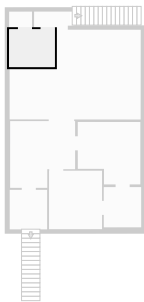
▼ **Hall**
1st Floor

WIDTH: 1.92 m • LENGTH: 0.90 m
AREA: 1.73 m² • PERIMETER: 5.64 m



▼ **Bathroom**
1st Floor

WIDTH: 2.60 m • LENGTH: 2.15 m
AREA: 5.59 m² • PERIMETER: 9.50 m



▼ Toilet
1st Floor

WIDTH: 1.30 m • LENGTH: 0.89 m
AREA: 1.16 m² • PERIMETER: 4.38 m

