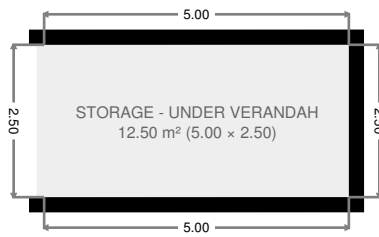


# Ground Floor

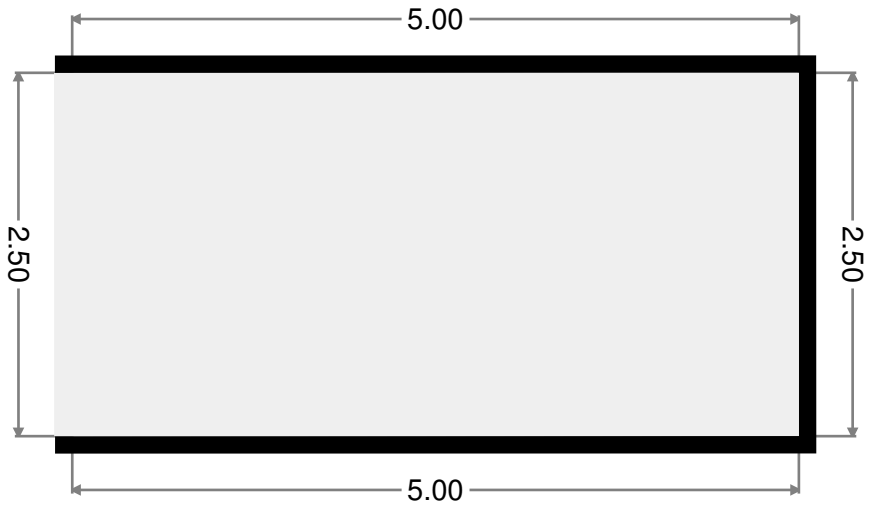


**4 Laylee Court**

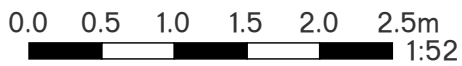
THIS FLOORPLAN IS PROVIDED WITHOUT WARRANTY OF ANY KIND. SENSOPIA DISCLAIMS ANY WARRANTY INCLUDING, WITHOUT LIMITATION, SATISFACTORY QUALITY OR ACCURACY OF DIMENSIONS.

# Storage - Under Verandah

Width: 2.50 m  
Length: 5.00 m  
Area: 12.50 m<sup>2</sup>  
Perimeter: 15.00 m



THIS FLOORPLAN IS PROVIDED WITHOUT WARRANTY OF ANY KIND. SENSOPIA DISCLAIMS ANY WARRANTY INCLUDING, WITHOUT LIMITATION, SATISFACTORY QUALITY OR ACCURACY OF DIMENSIONS.



# 1st Floor



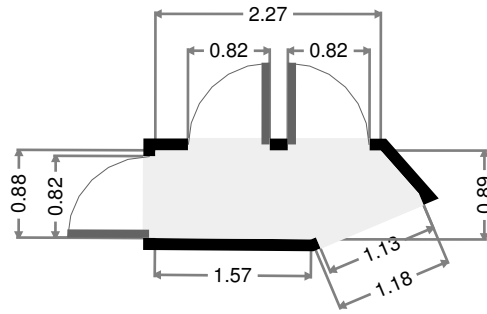
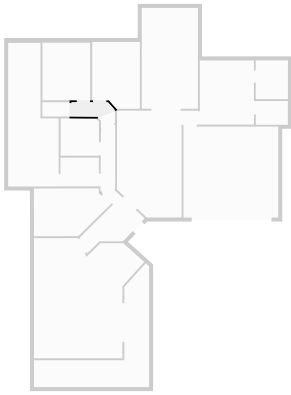
THIS FLOORPLAN IS PROVIDED WITHOUT WARRANTY OF ANY KIND. SENSOPIA DISCLAIMS ANY WARRANTY INCLUDING, WITHOUT LIMITATION, SATISFACTORY QUALITY OR ACCURACY OF DIMENSIONS.



## 4 Laylee Court

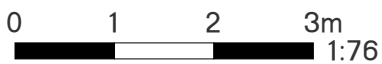
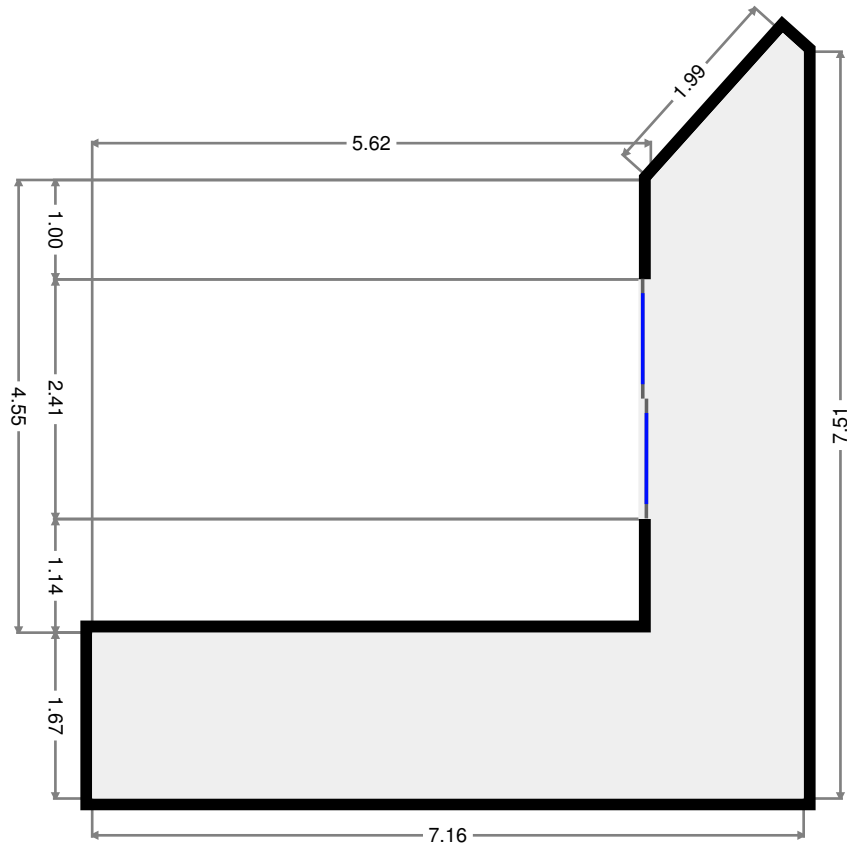
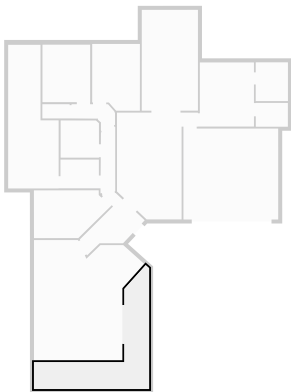
# Hall

Width: 0.89 m  
 Length: 2.27 m  
 Area: 2.03 m<sup>2</sup>  
 Perimeter: 6.48 m



# Front Verandah

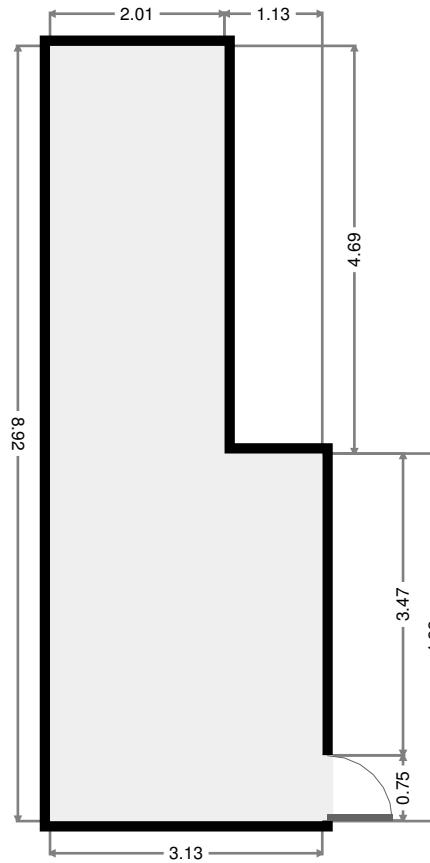
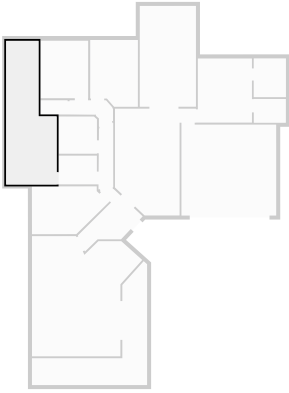
Width: 7.16 m  
 Length: 7.51 m  
 Area: 20.20 m<sup>2</sup>  
 Perimeter: 28.77 m  
 Ceiling Height: 2.17 m



THIS FLOORPLAN IS PROVIDED WITHOUT WARRANTY OF ANY KIND. SENSOPIA DISCLAIMS ANY WARRANTY INCLUDING, WITHOUT LIMITATION, SATISFACTORY QUALITY OR ACCURACY OF DIMENSIONS.

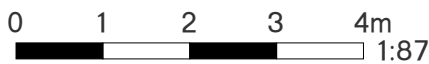
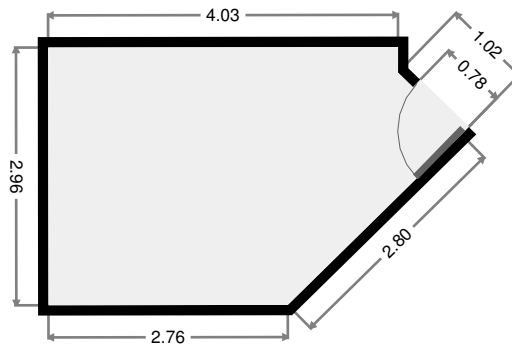
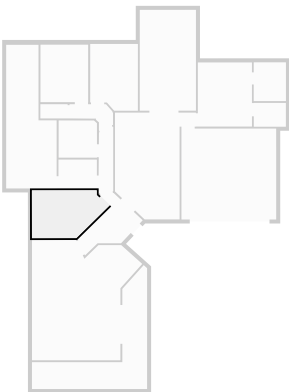
# Deck

Width: 3.13 m  
 Length: 8.92 m  
 Area: 22.68 m<sup>2</sup>  
 Perimeter: 24.12 m



# Bedroom

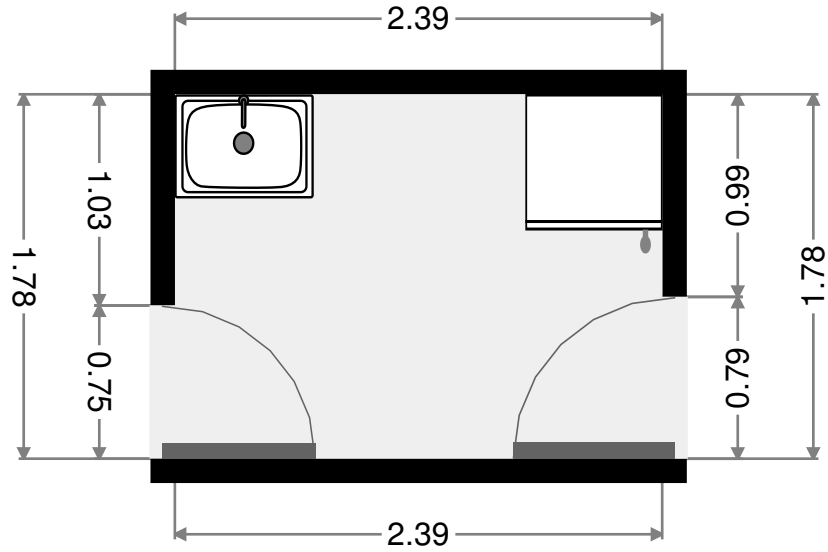
Width: 2.96 m  
 Length: 4.03 m  
 Area: 11.68 m<sup>2</sup>  
 Perimeter: 13.87 m  
 Ceiling Height: 2.17 m



THIS FLOORPLAN IS PROVIDED WITHOUT WARRANTY OF ANY KIND. SENSOPIA DISCLAIMS ANY WARRANTY INCLUDING, WITHOUT LIMITATION, SATISFACTORY QUALITY OR ACCURACY OF DIMENSIONS.

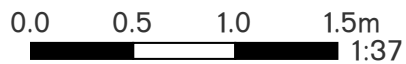
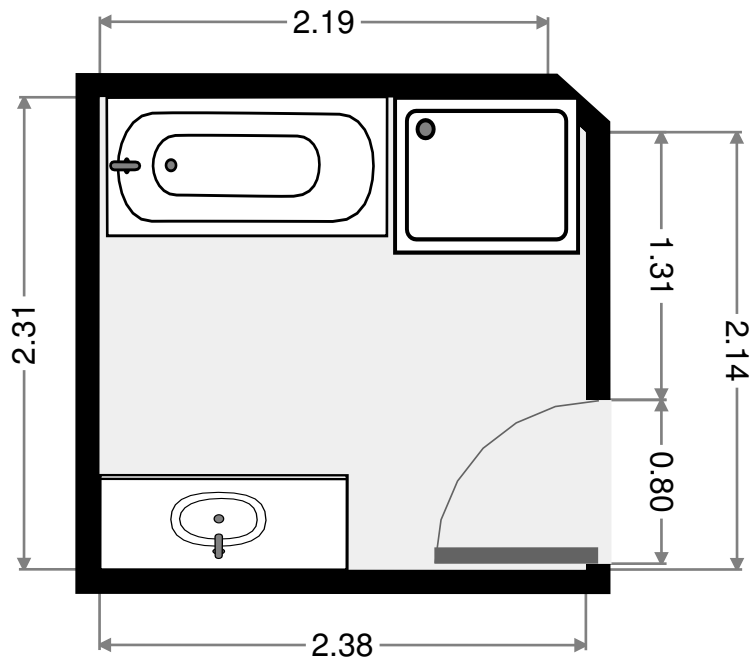
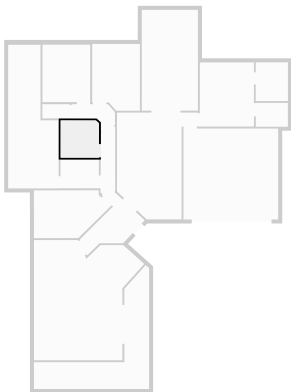
# Laundry Room

Width: 1.78 m  
 Length: 2.39 m  
 Area: 4.26 m<sup>2</sup>  
 Perimeter: 8.34 m



# Bathroom

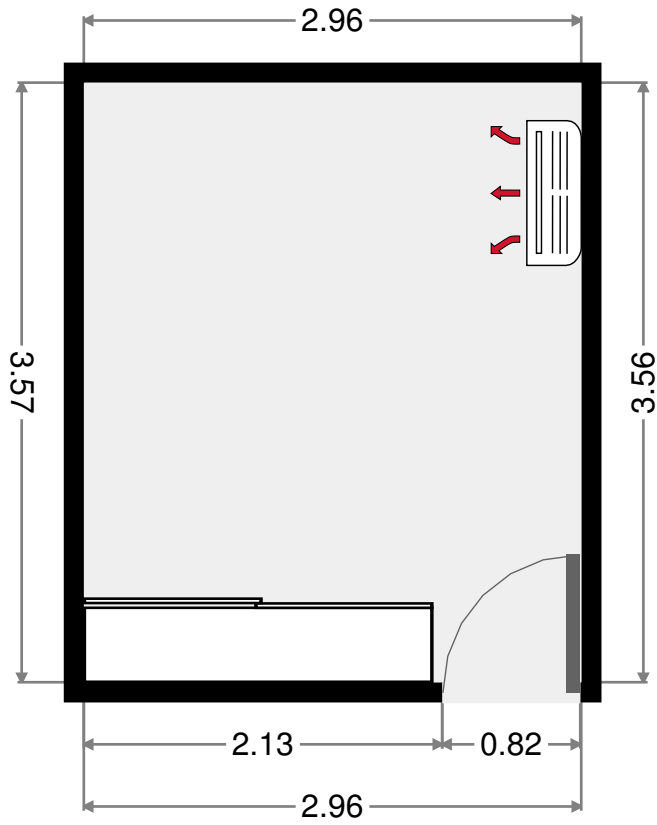
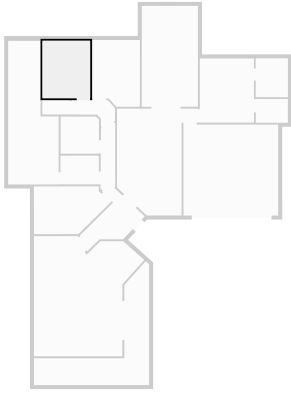
Width: 2.31 m  
 Length: 2.38 m  
 Area: 5.48 m<sup>2</sup>  
 Perimeter: 9.28 m



THIS FLOORPLAN IS PROVIDED WITHOUT WARRANTY OF ANY KIND. SENSOPIA DISCLAIMS ANY WARRANTY INCLUDING, WITHOUT LIMITATION, SATISFACTORY QUALITY OR ACCURACY OF DIMENSIONS.

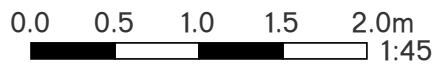
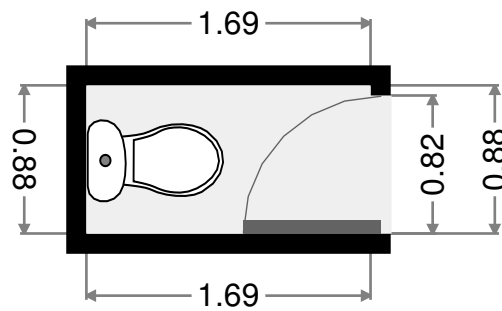
# Bedroom

Width: 2.96 m  
 Length: 3.56 m  
 Area: 10.57 m<sup>2</sup>  
 Perimeter: 13.06 m



# Toilet

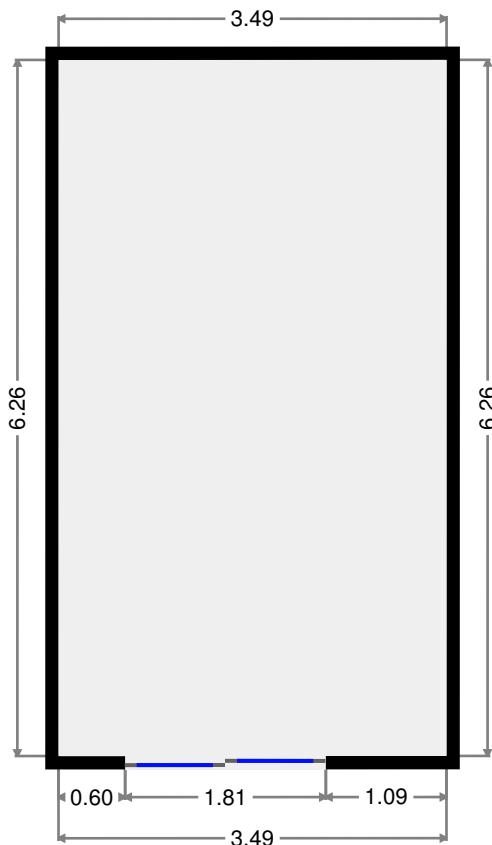
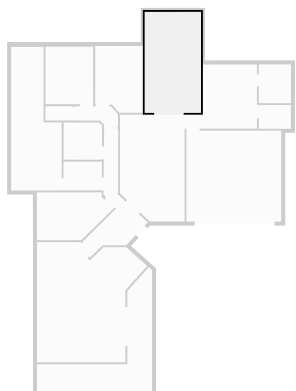
Width: 0.88 m  
 Length: 1.69 m  
 Area: 1.49 m<sup>2</sup>  
 Perimeter: 5.15 m



THIS FLOORPLAN IS PROVIDED WITHOUT WARRANTY OF ANY KIND. SENSOPIA DISCLAIMS ANY WARRANTY INCLUDING, WITHOUT LIMITATION, SATISFACTORY QUALITY OR ACCURACY OF DIMENSIONS.

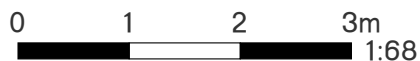
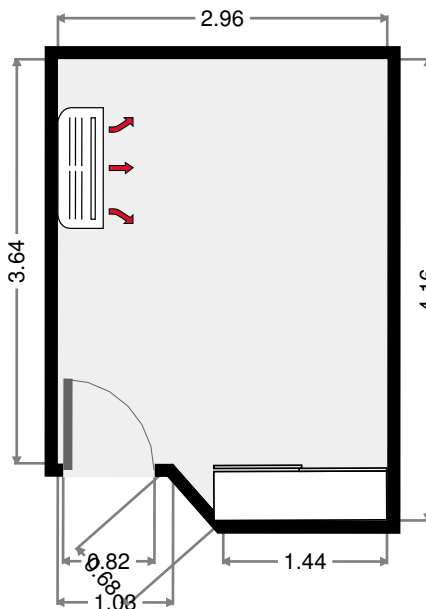
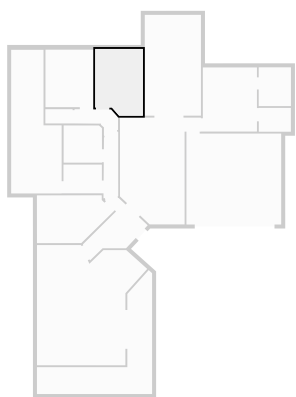
# Outdoor Area

Width: 3.49 m  
 Length: 6.26 m  
 Area: 21.86 m<sup>2</sup>  
 Perimeter: 19.51 m



# Bedroom

Width: 2.96 m  
 Length: 4.16 m  
 Area: 11.64 m<sup>2</sup>  
 Perimeter: 13.94 m  
 Ceiling Height: 2.17 m

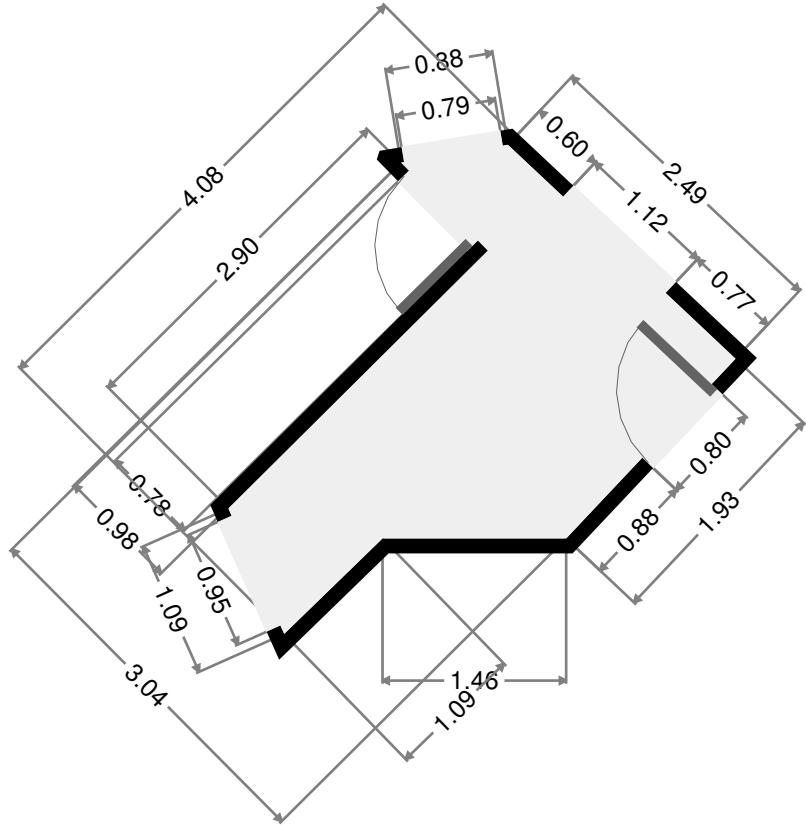


THIS FLOORPLAN IS PROVIDED WITHOUT WARRANTY OF ANY KIND. SENSOPIA DISCLAIMS ANY WARRANTY INCLUDING, WITHOUT LIMITATION, SATISFACTORY QUALITY OR ACCURACY OF DIMENSIONS.



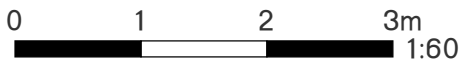
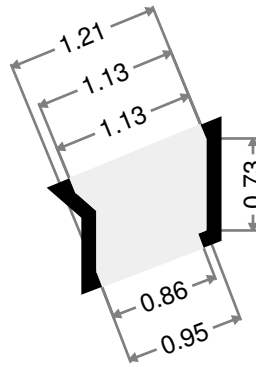
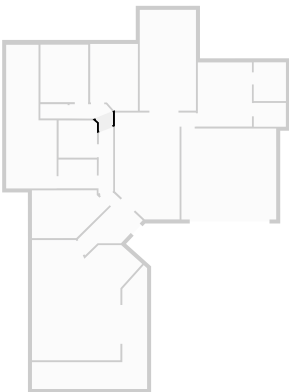
# Hall

Width: 3.04 m  
 Length: 4.08 m  
 Area: 6.94 m<sup>2</sup>  
 Perimeter: 12.82 m  
 Ceiling Height: 2.17 m



# Hall

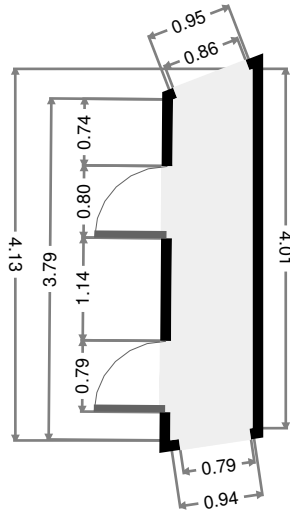
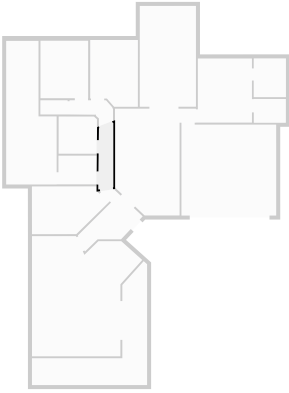
Width: 0.68 m  
 Length: 1.21 m  
 Area: 0.65 m<sup>2</sup>  
 Perimeter: 3.51 m



THIS FLOORPLAN IS PROVIDED WITHOUT WARRANTY OF ANY KIND. SENSOPIA DISCLAIMS ANY WARRANTY INCLUDING, WITHOUT LIMITATION, SATISFACTORY QUALITY OR ACCURACY OF DIMENSIONS.

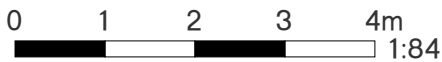
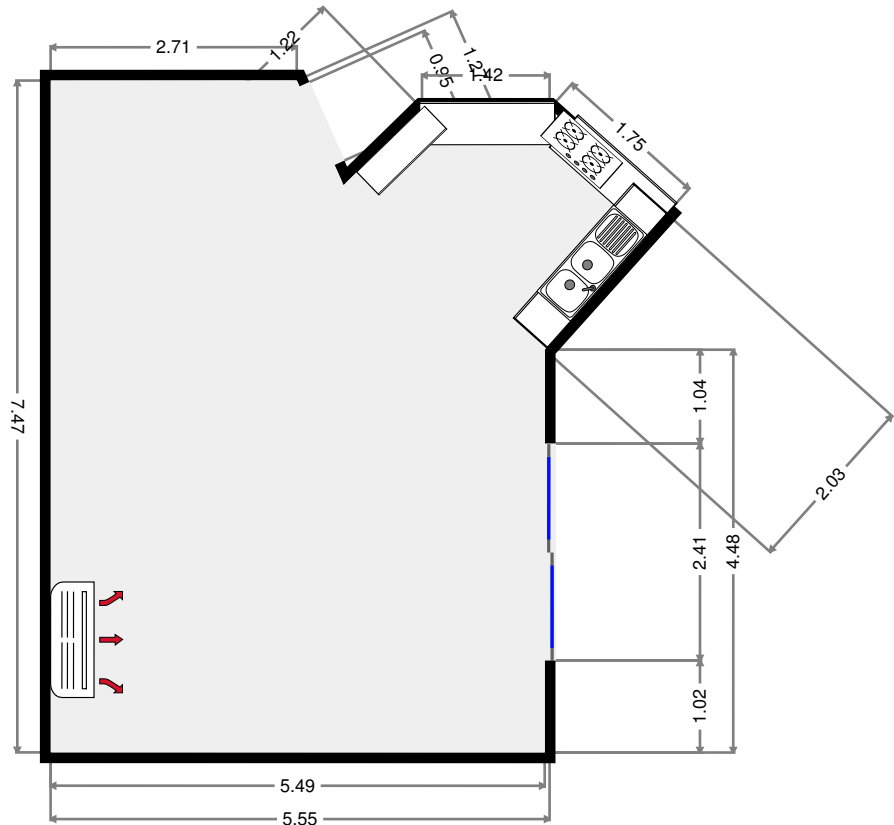
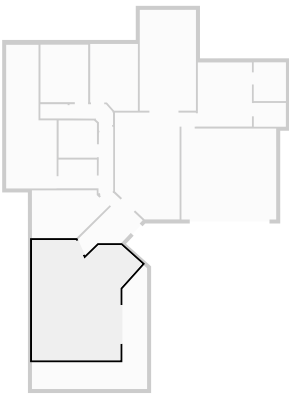
# Hall

Width: 0.94 m  
 Length: 4.13 m  
 Area: 3.49 m<sup>2</sup>  
 Perimeter: 9.65 m



# Living Room

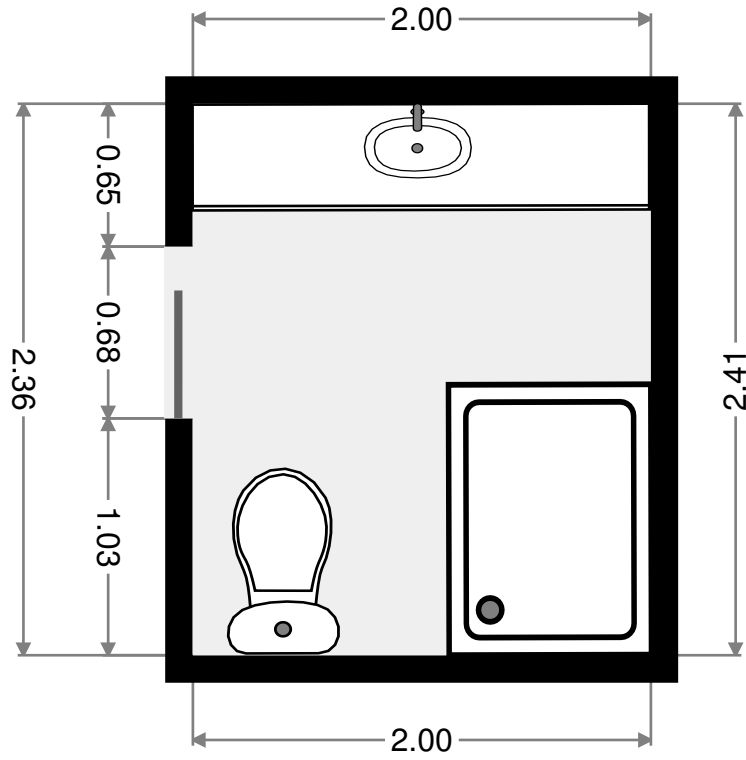
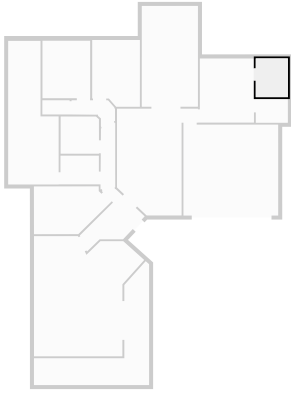
Width: 5.55 m  
 Length: 7.47 m  
 Area: 41.49 m<sup>2</sup>  
 Perimeter: 27.86 m  
 Ceiling Height: 2.17 m



THIS FLOORPLAN IS PROVIDED WITHOUT WARRANTY OF ANY KIND. SENSOPIA DISCLAIMS ANY WARRANTY INCLUDING, WITHOUT LIMITATION, SATISFACTORY QUALITY OR ACCURACY OF DIMENSIONS.

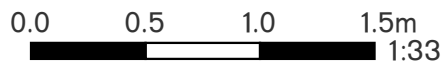
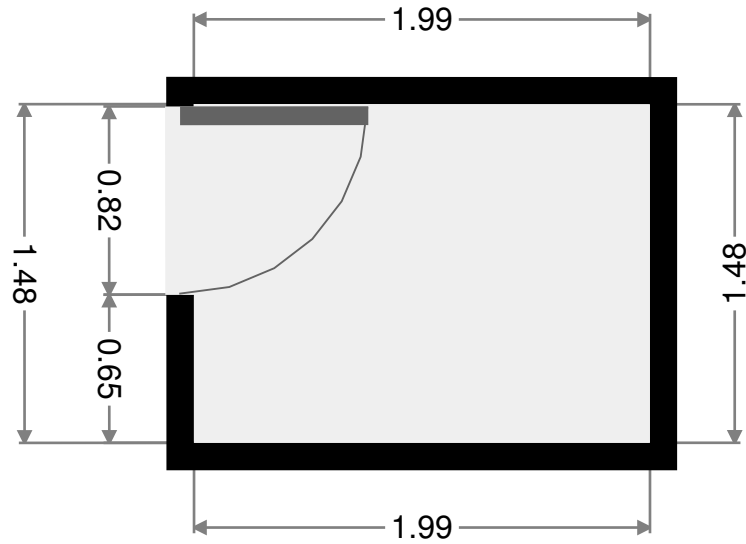
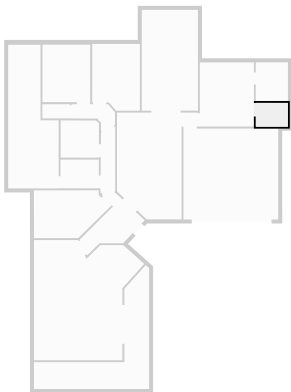
# Bathroom

Width: 2.00 m  
 Length: 2.41 m  
 Area: 4.82 m<sup>2</sup>  
 Perimeter: 8.82 m



# Closet

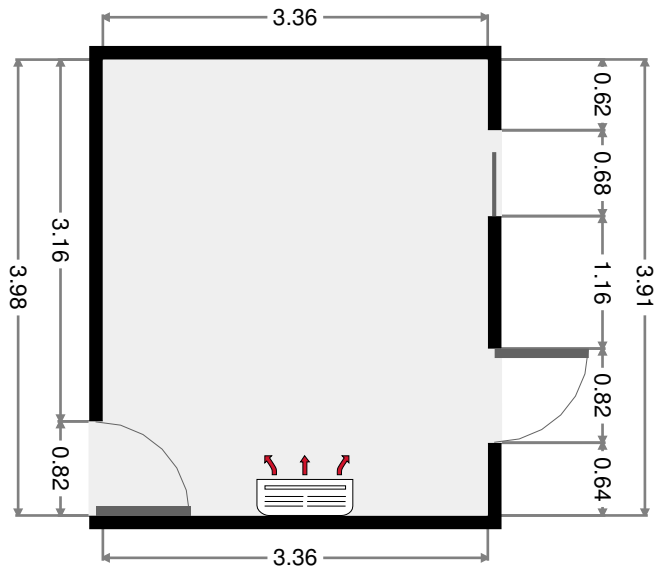
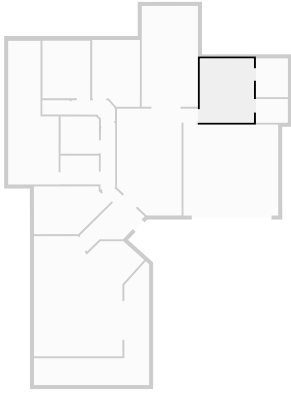
Width: 1.48 m  
 Length: 1.99 m  
 Area: 2.94 m<sup>2</sup>  
 Perimeter: 6.94 m



THIS FLOORPLAN IS PROVIDED WITHOUT WARRANTY OF ANY KIND. SENSOPIA DISCLAIMS ANY WARRANTY INCLUDING, WITHOUT LIMITATION, SATISFACTORY QUALITY OR ACCURACY OF DIMENSIONS.

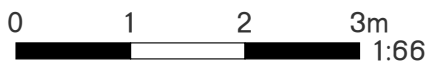
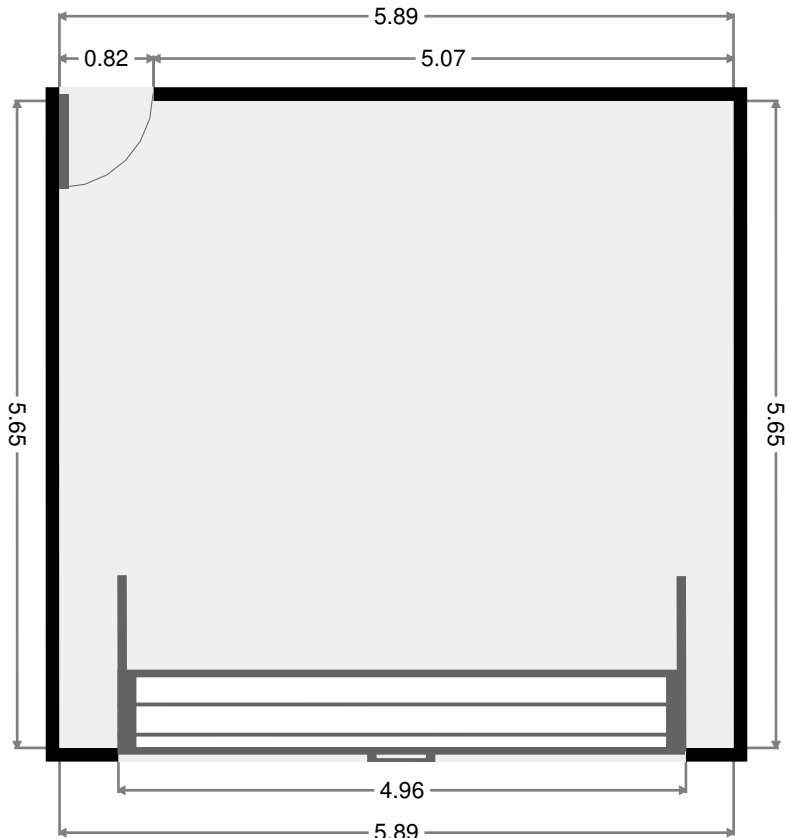
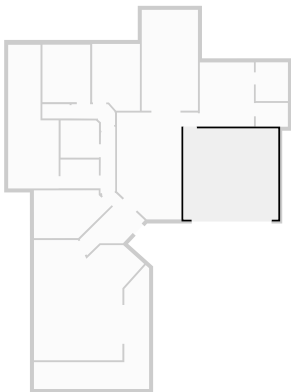
# Master Bedroom

Width: 3.36 m  
 Length: 3.98 m  
 Area: 13.38 m<sup>2</sup>  
 Perimeter: 14.69 m



# Garage

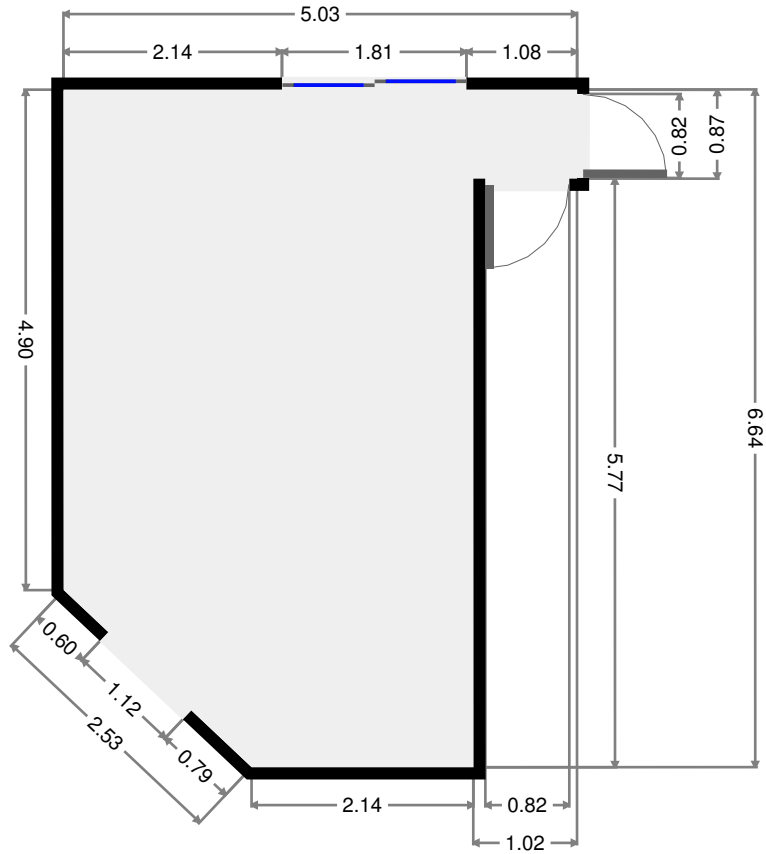
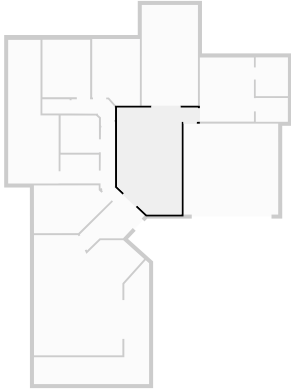
Width: 5.65 m  
 Length: 5.89 m  
 Area: 33.26 m<sup>2</sup>  
 Perimeter: 23.07 m



THIS FLOORPLAN IS PROVIDED WITHOUT WARRANTY OF ANY KIND. SENSOPIA DISCLAIMS ANY WARRANTY INCLUDING, WITHOUT LIMITATION, SATISFACTORY QUALITY OR ACCURACY OF DIMENSIONS.

# Living Room

Width: 5.03 m  
 Length: 6.64 m  
 Area: 25.91 m<sup>2</sup>  
 Perimeter: 22.28 m  
 Ceiling Height: 2.17 m



THIS FLOORPLAN IS PROVIDED WITHOUT WARRANTY OF ANY KIND. SENSOPIA DISCLAIMS ANY WARRANTY INCLUDING, WITHOUT LIMITATION, SATISFACTORY QUALITY OR ACCURACY OF DIMENSIONS.



## 4 Laylee Court

2017-02-02