

# 4 Brooks Court

## Ground Floor



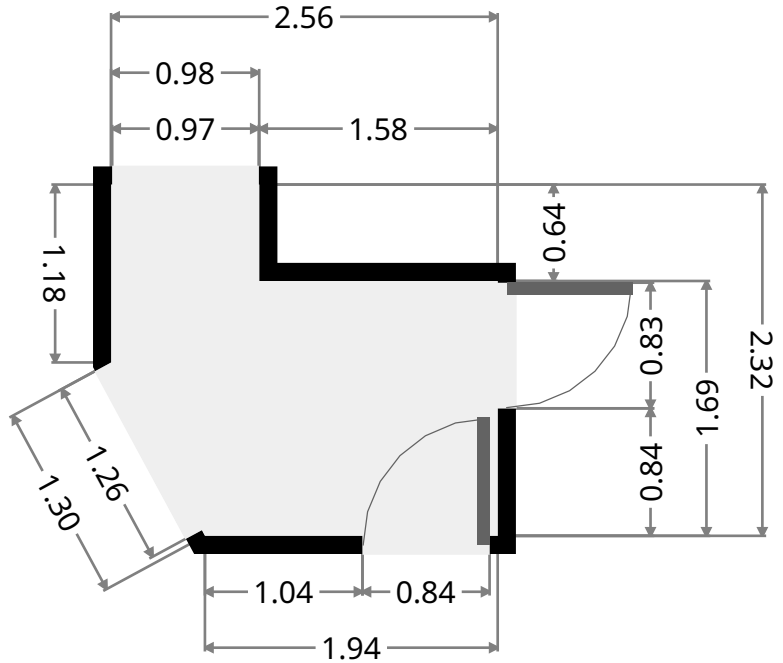
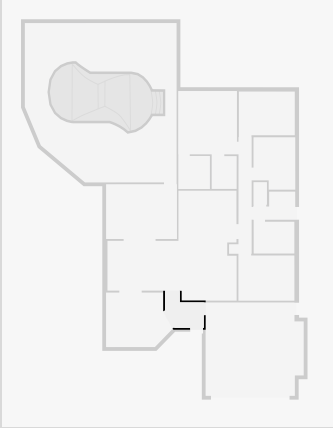
THIS FLOORPLAN IS PROVIDED WITHOUT WARRANTY OF ANY KIND. SENSOPIA DISCLAIMS ANY WARRANTY INCLUDING, WITHOUT LIMITATION, SATISFACTORY QUALITY OR ACCURACY OF DIMENSIONS.



# 4 Brooks Court

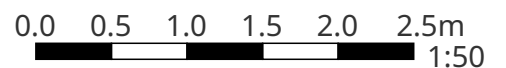
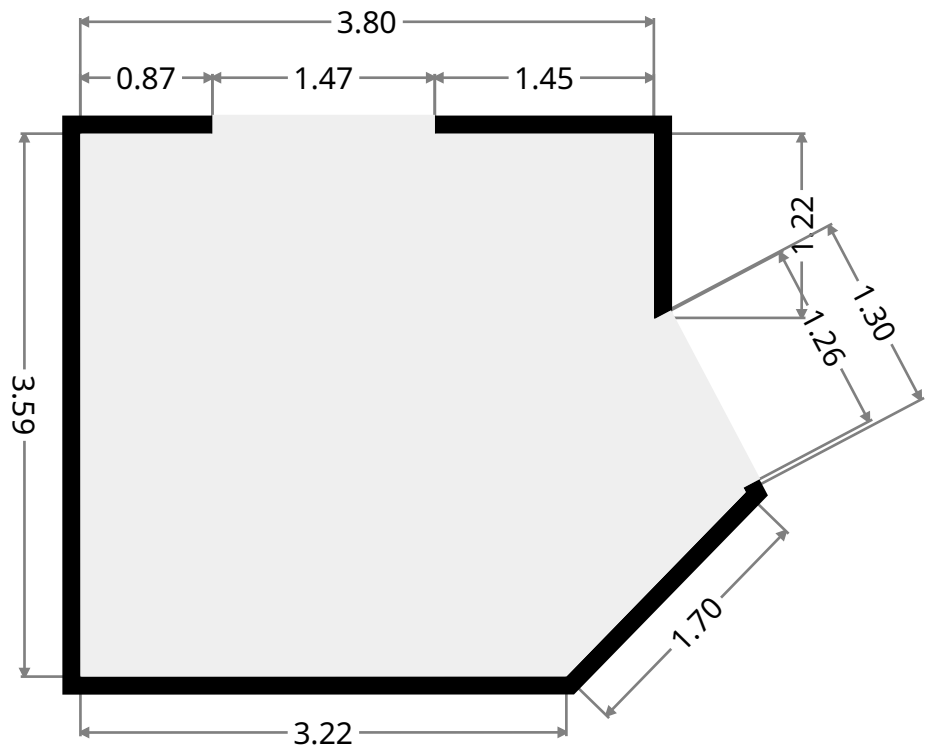
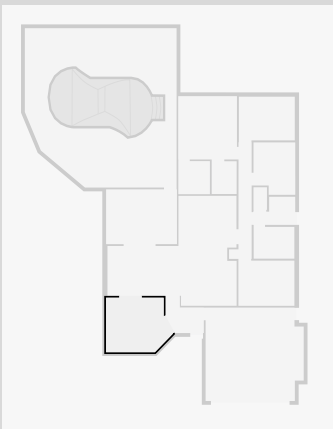
## Entry

Width: 2.32 m  
 Length: 2.56 m  
 Area: 4.58 m<sup>2</sup>  
 Perimeter: 9.30 m



## Living Room

Width: 3.59 m  
 Length: 3.80 m  
 Area: 14.00 m<sup>2</sup>  
 Perimeter: 14.83 m  
 Ceiling Height: 2.17 m

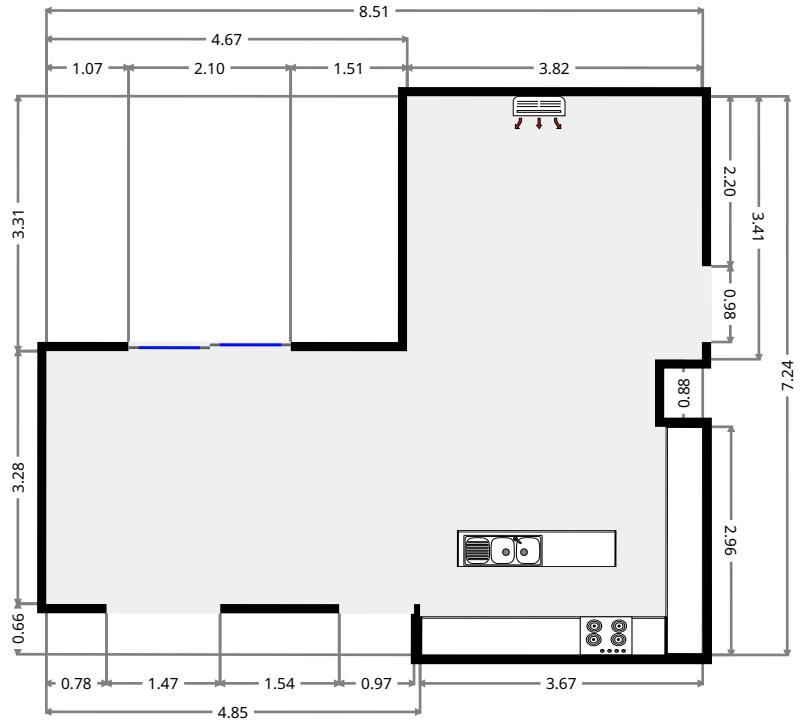
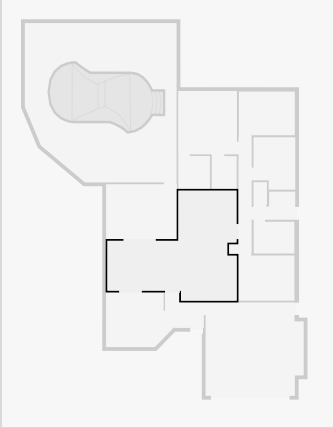


THIS FLOORPLAN IS PROVIDED WITHOUT WARRANTY OF ANY KIND. SENSOPIA DISCLAIMS ANY WARRANTY INCLUDING, WITHOUT LIMITATION, SATISFACTORY QUALITY OR ACCURACY OF DIMENSIONS.

# 4 Brooks Court

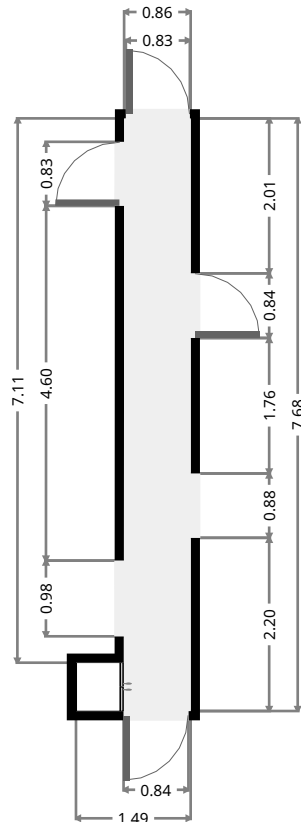
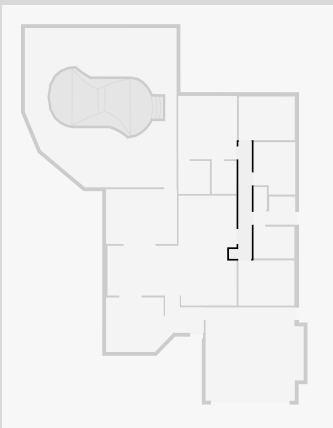
## Kitchen/Living/Dining

Width: 7.24 m  
 Length: 8.51 m  
 Area: 42.40 m<sup>2</sup>  
 Perimeter: 32.72 m



## Hall

Width: 1.49 m  
 Length: 7.68 m  
 Area: 7.04 m<sup>2</sup>  
 Perimeter: 18.34 m

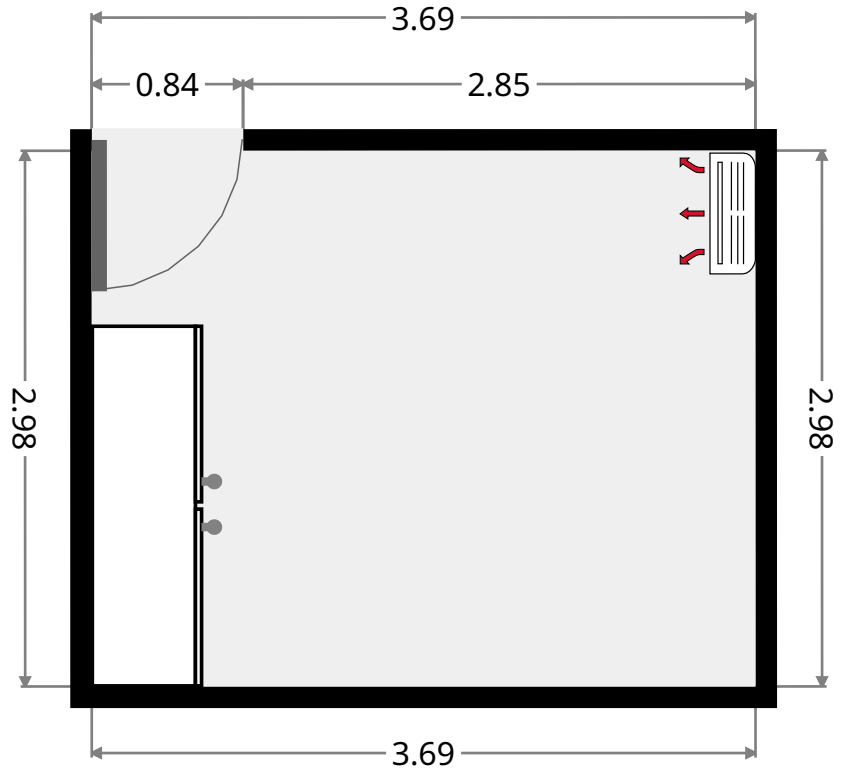
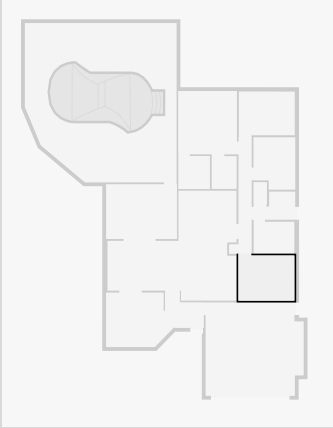


THIS FLOORPLAN IS PROVIDED WITHOUT WARRANTY OF ANY KIND. SENSOPIA DISCLAIMS ANY WARRANTY INCLUDING, WITHOUT LIMITATION, SATISFACTORY QUALITY OR ACCURACY OF DIMENSIONS.

# 4 Brooks Court

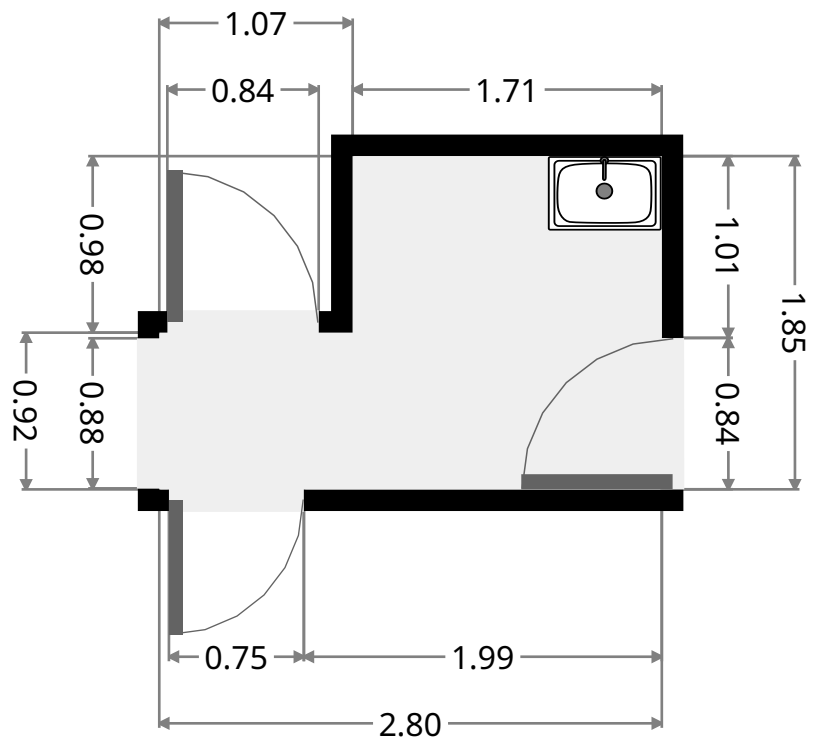
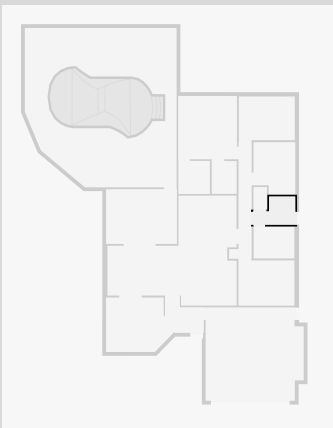
## Bedroom

Width: 2.98 m  
Length: 3.69 m  
Area: 10.98 m<sup>2</sup>  
Perimeter: 13.33 m

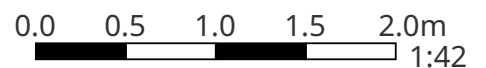


## Laundry Room

Width: 1.85 m  
Length: 2.80 m  
Area: 4.12 m<sup>2</sup>  
Perimeter: 9.29 m



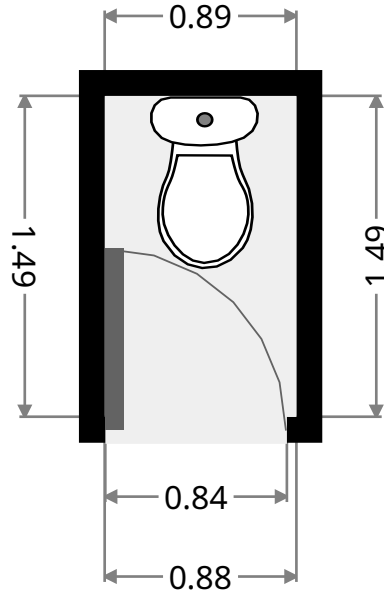
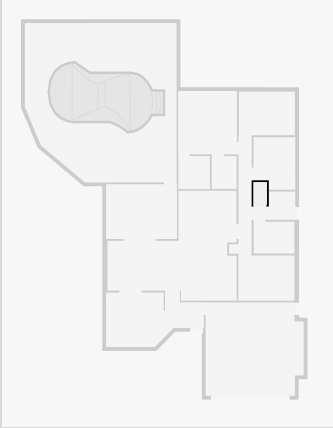
THIS FLOORPLAN IS PROVIDED WITHOUT WARRANTY OF ANY KIND. SENSOPIA DISCLAIMS ANY WARRANTY INCLUDING, WITHOUT LIMITATION, SATISFACTORY QUALITY OR ACCURACY OF DIMENSIONS.



# 4 Brooks Court

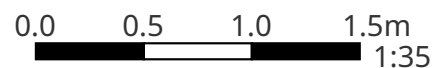
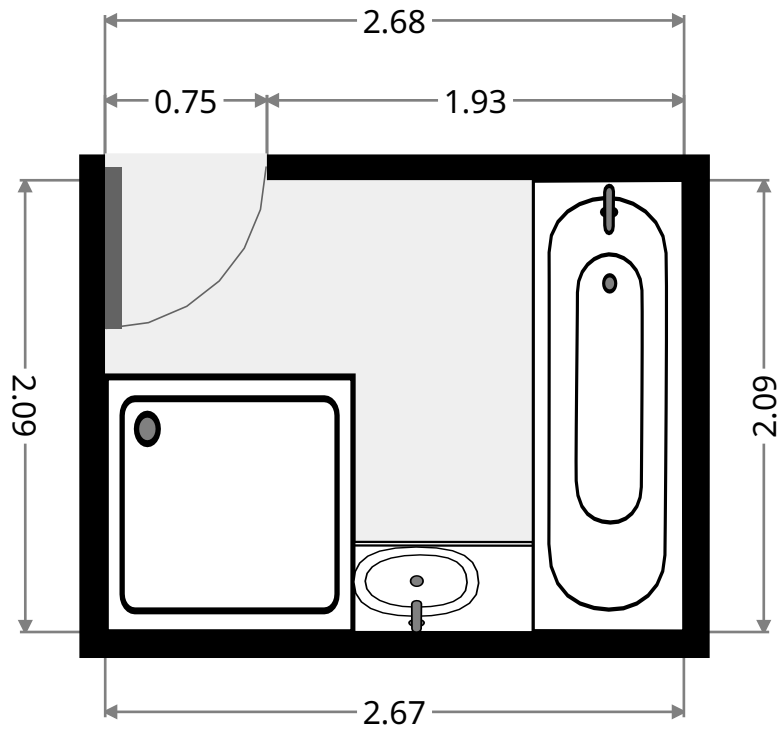
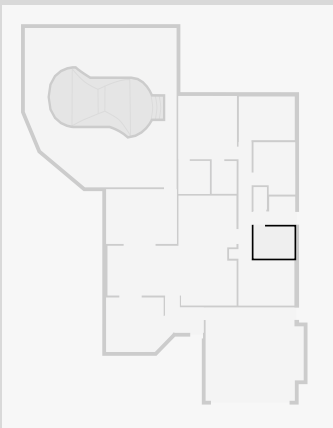
## Toilet

Width: 0.89 m  
Length: 1.49 m  
Area: 1.32 m<sup>2</sup>  
Perimeter: 4.75 m



## Bathroom

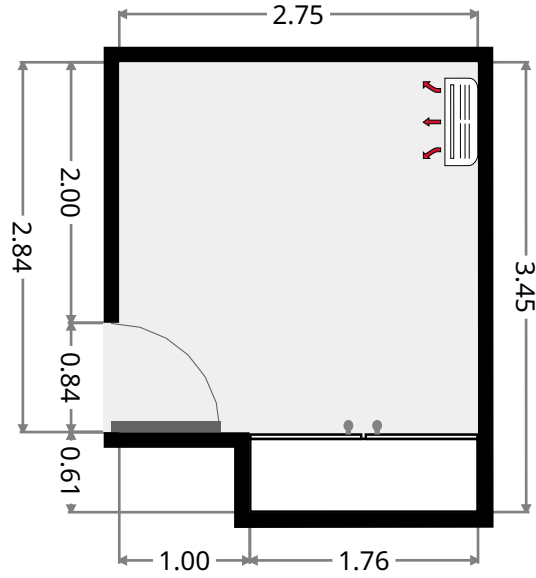
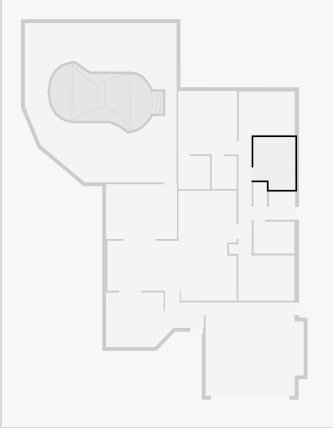
Width: 2.09 m  
Length: 2.68 m  
Area: 5.61 m<sup>2</sup>  
Perimeter: 9.55 m



# 4 Brooks Court

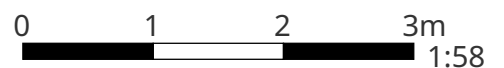
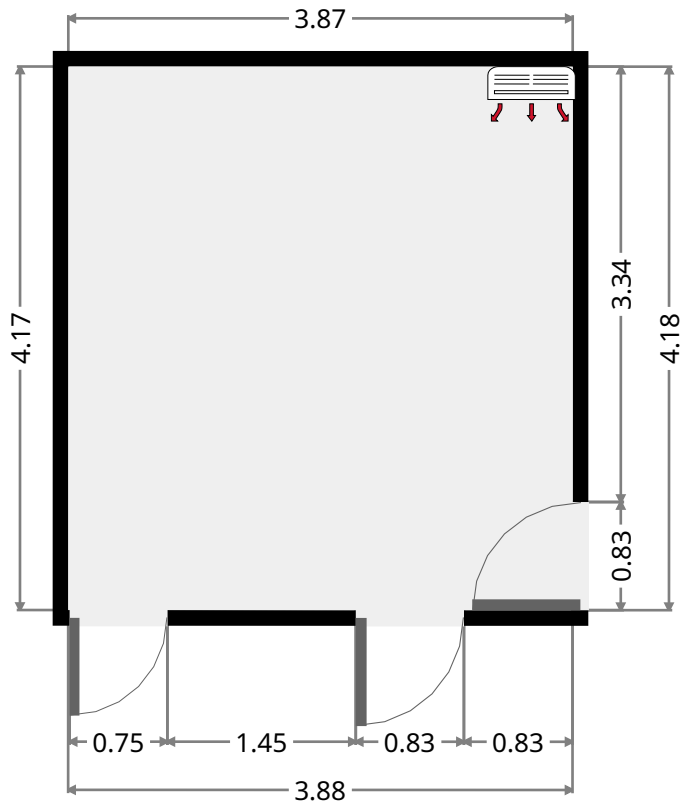
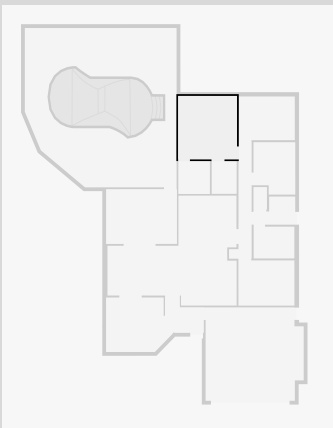
## Bedroom

Width: 2.75 m  
 Length: 3.45 m  
 Area: 8.89 m<sup>2</sup>  
 Perimeter: 12.41 m



## Master Bedroom

Width: 3.87 m  
 Length: 4.18 m  
 Area: 16.15 m<sup>2</sup>  
 Perimeter: 16.08 m

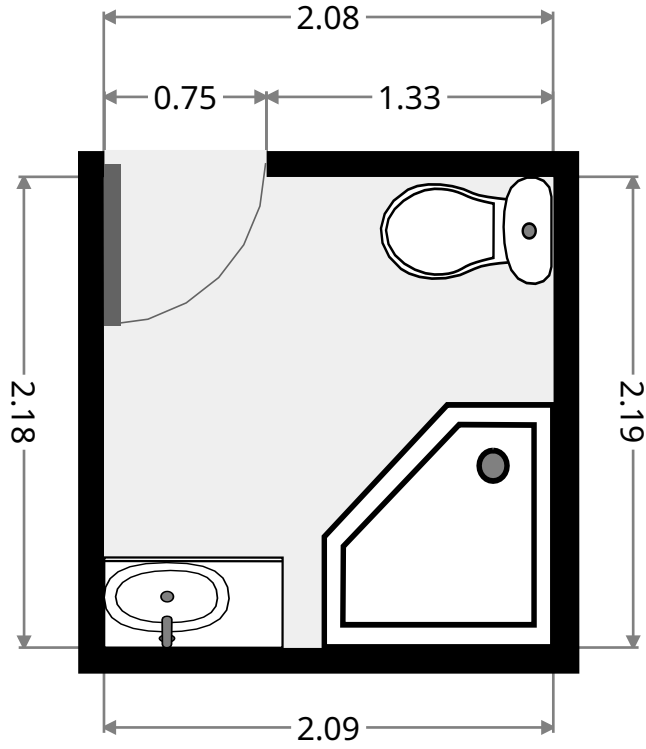
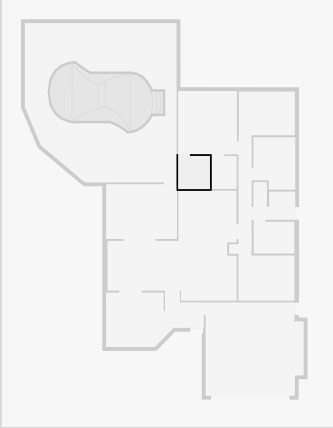


THIS FLOORPLAN IS PROVIDED WITHOUT WARRANTY OF ANY KIND. SENSOPIA DISCLAIMS ANY WARRANTY INCLUDING, WITHOUT LIMITATION, SATISFACTORY QUALITY OR ACCURACY OF DIMENSIONS.

# 4 Brooks Court

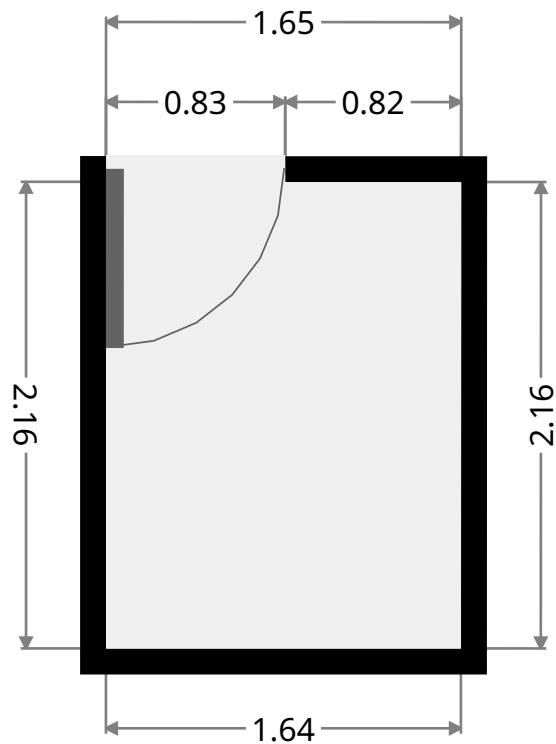
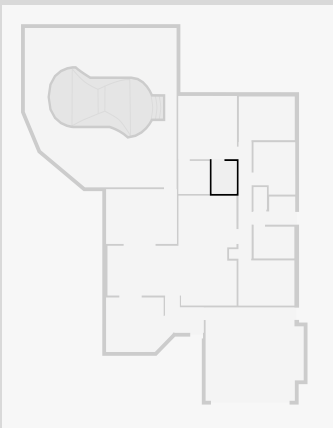
## Ensuite

Width: 2.08 m  
Length: 2.19 m  
Area: 4.54 m<sup>2</sup>  
Perimeter: 8.52 m



## WIR

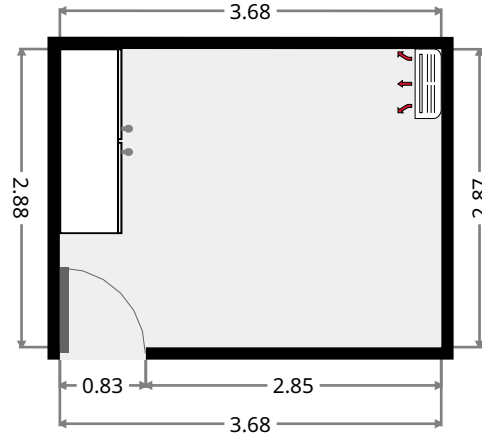
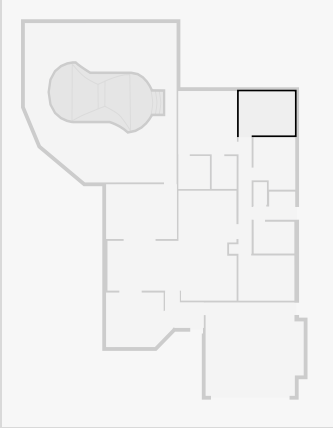
Width: 1.64 m  
Length: 2.16 m  
Area: 3.55 m<sup>2</sup>  
Perimeter: 7.61 m



# 4 Brooks Court

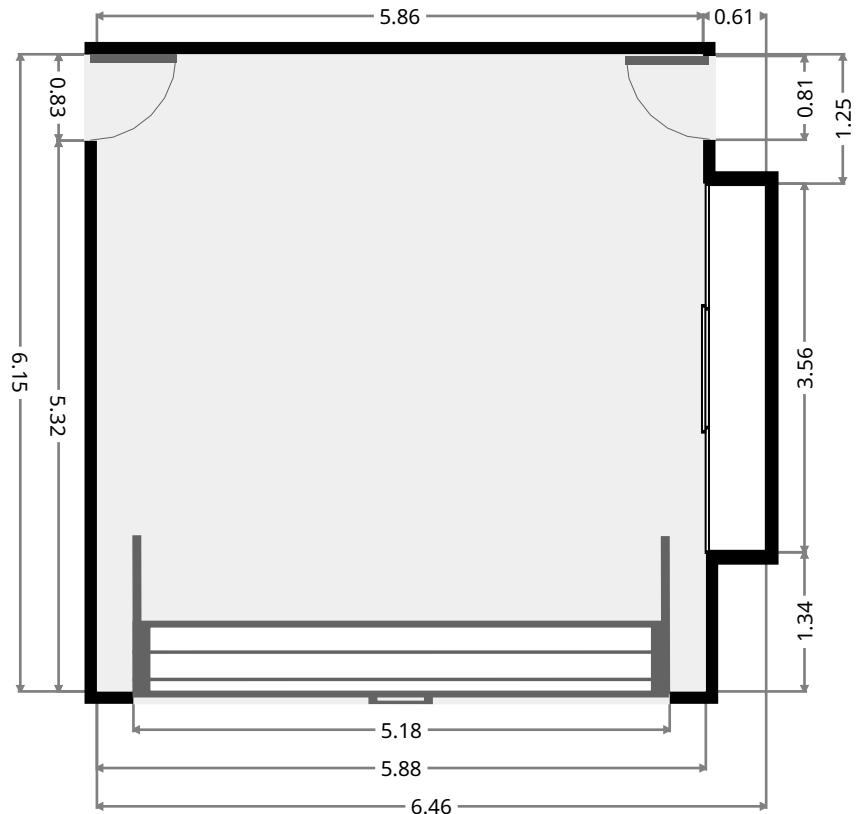
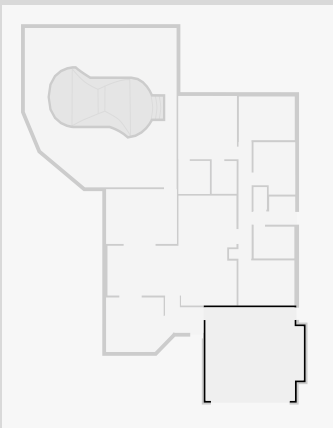
## Bedroom

Width: 2.87 m  
 Length: 3.68 m  
 Area: 10.60 m<sup>2</sup>  
 Perimeter: 13.12 m



## Garage

Width: 6.15 m  
 Length: 6.46 m  
 Area: 38.24 m<sup>2</sup>  
 Perimeter: 25.24 m



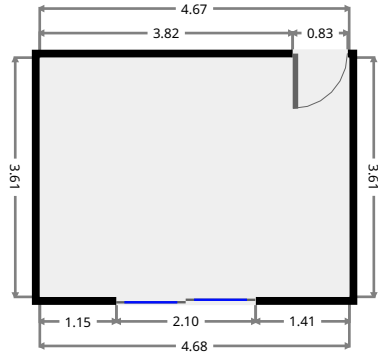
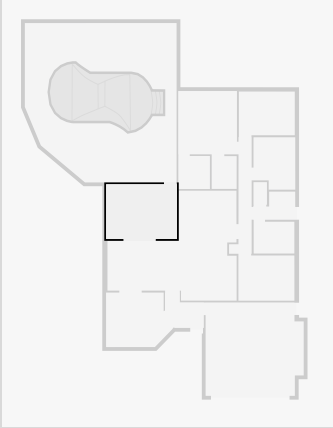
THIS FLOORPLAN IS PROVIDED WITHOUT WARRANTY OF ANY KIND. SENSOPIA DISCLAIMS ANY WARRANTY INCLUDING, WITHOUT LIMITATION, SATISFACTORY QUALITY OR ACCURACY OF DIMENSIONS.



# 4 Brooks Court

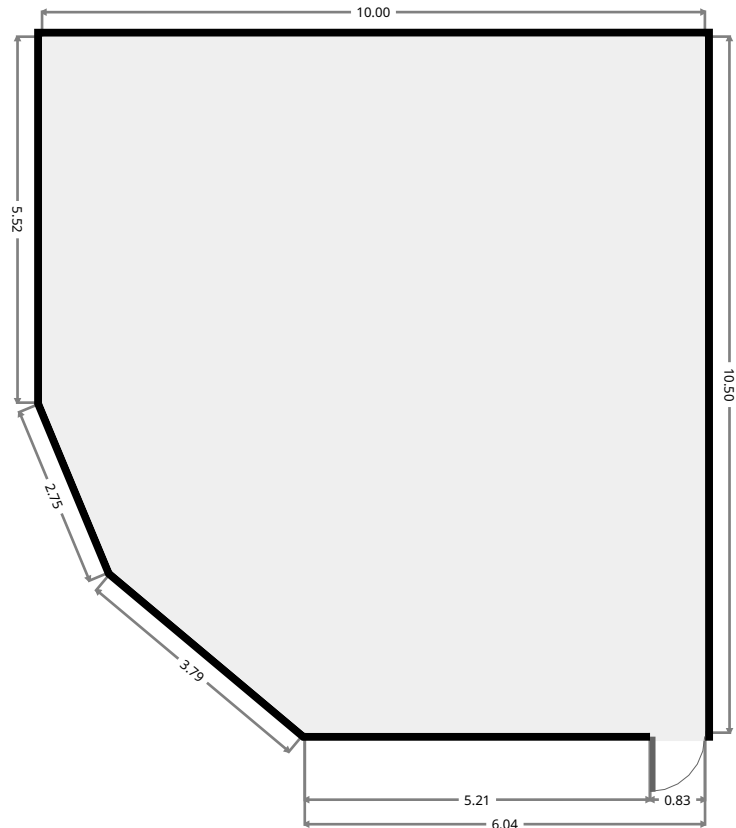
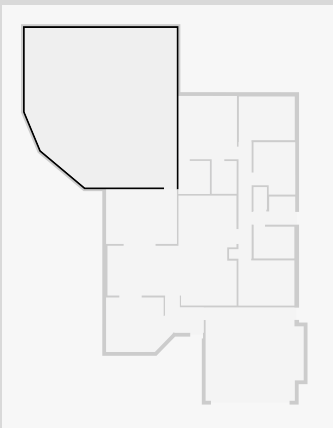
## Outdoor Area

Width: 3.61 m  
 Length: 4.67 m  
 Area: 16.85 m<sup>2</sup>  
 Perimeter: 16.56 m



## Pool Area

Width: 10.00 m  
 Length: 10.50 m  
 Area: 97.53 m<sup>2</sup>  
 Perimeter: 38.60 m



THIS FLOORPLAN IS PROVIDED WITHOUT WARRANTY OF ANY KIND. SENSOPIA DISCLAIMS ANY WARRANTY INCLUDING, WITHOUT LIMITATION, SATISFACTORY QUALITY OR ACCURACY OF DIMENSIONS.