

# 4/22 Victoria Parade

**SUBMITTED BY**  
Ray White Rockhampton Casey  
stockers@cqoz.com

---

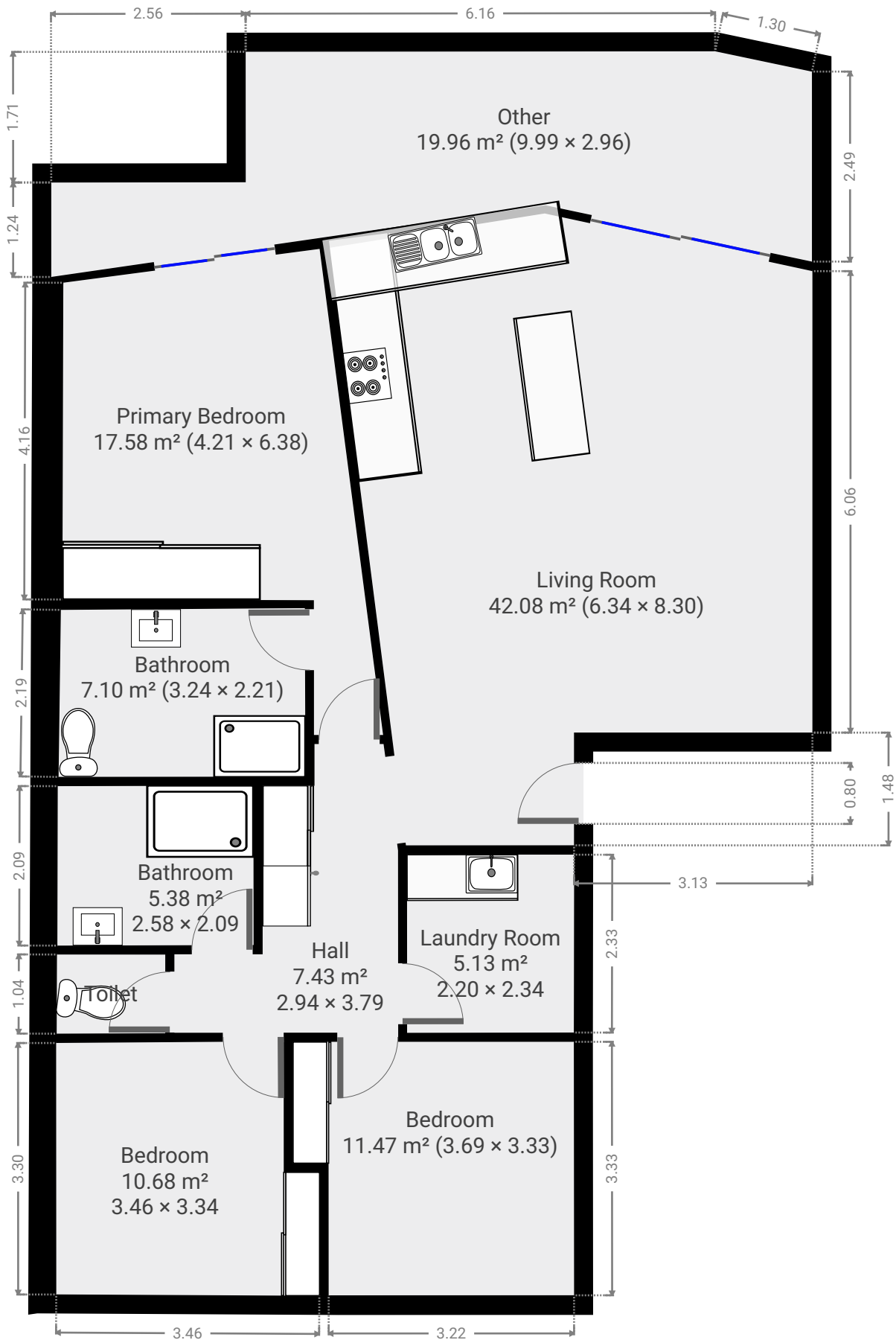
**CREATED ON**  
2022-08-31

---

**Floors**  
1

---

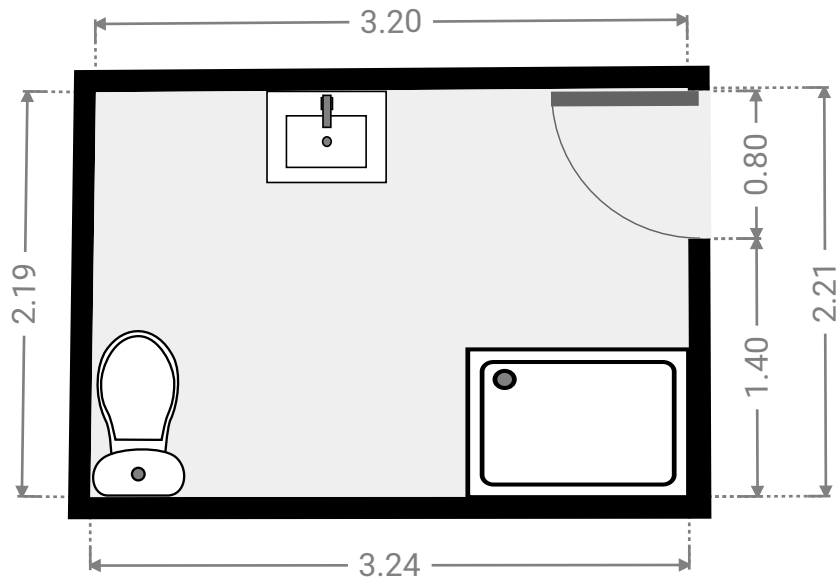
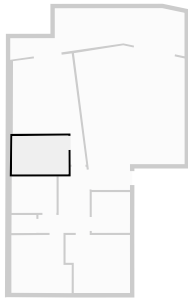
▼ Ground Floor



FLOORS: 1

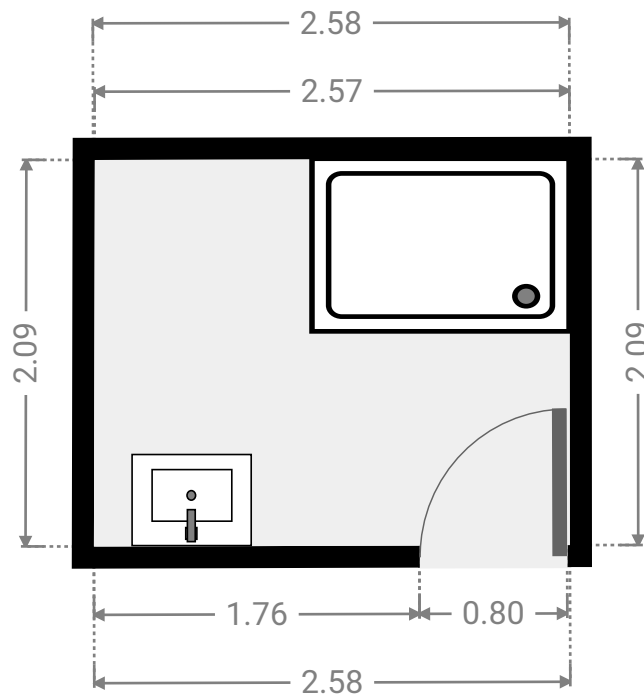
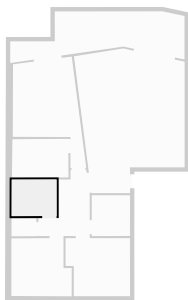
▼ Bathroom  
Ground Floor

WIDTH: 3.24 m • LENGTH: 2.21 m  
AREA: 7.10 m<sup>2</sup> • PERIMETER: 10.85 m



▼ Bathroom  
Ground Floor

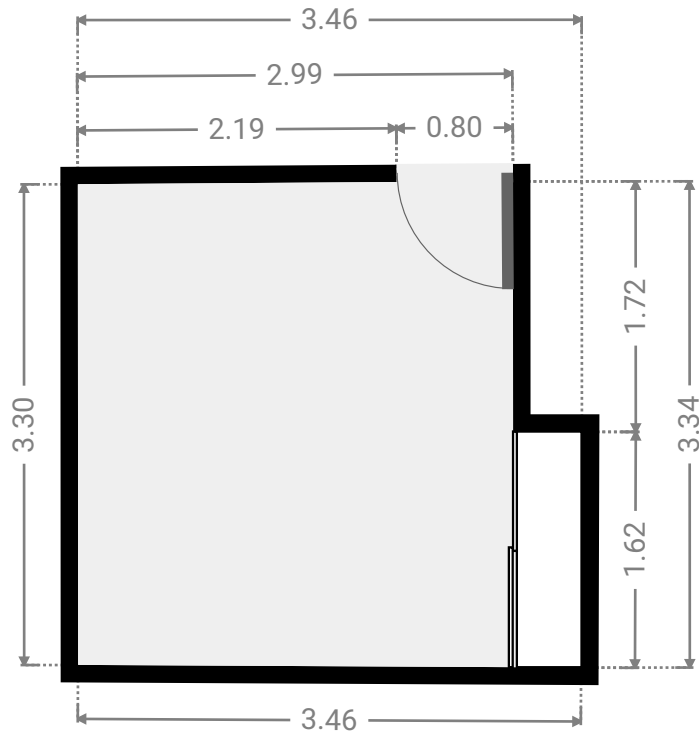
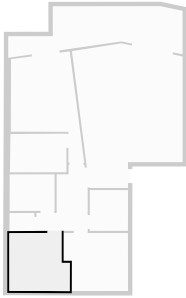
WIDTH: 2.58 m • LENGTH: 2.09 m  
AREA: 5.38 m<sup>2</sup> • PERIMETER: 9.33 m



FLOORS: 1

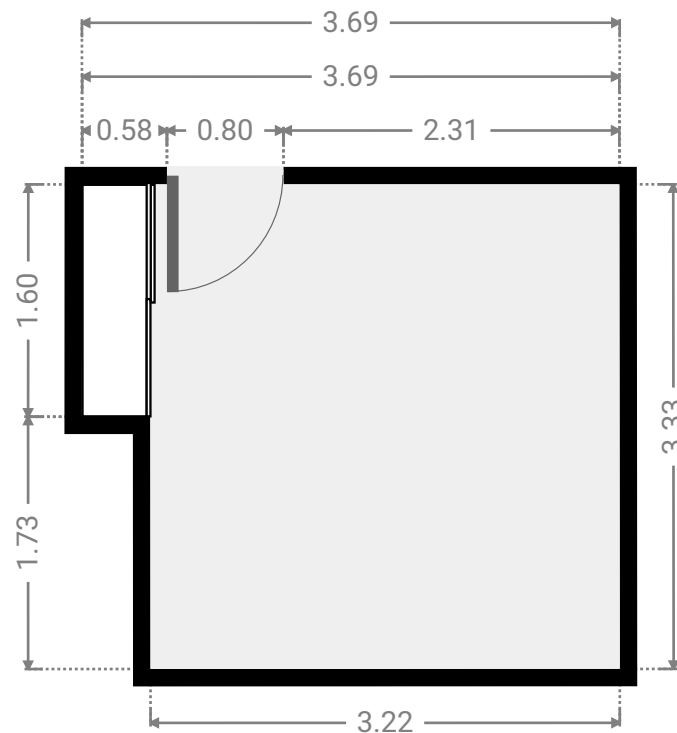
▼ Bedroom  
Ground Floor

WIDTH: 3.46 m • LENGTH: 3.34 m  
AREA: 10.68 m<sup>2</sup> • PERIMETER: 13.56 m



▼ Bedroom  
Ground Floor

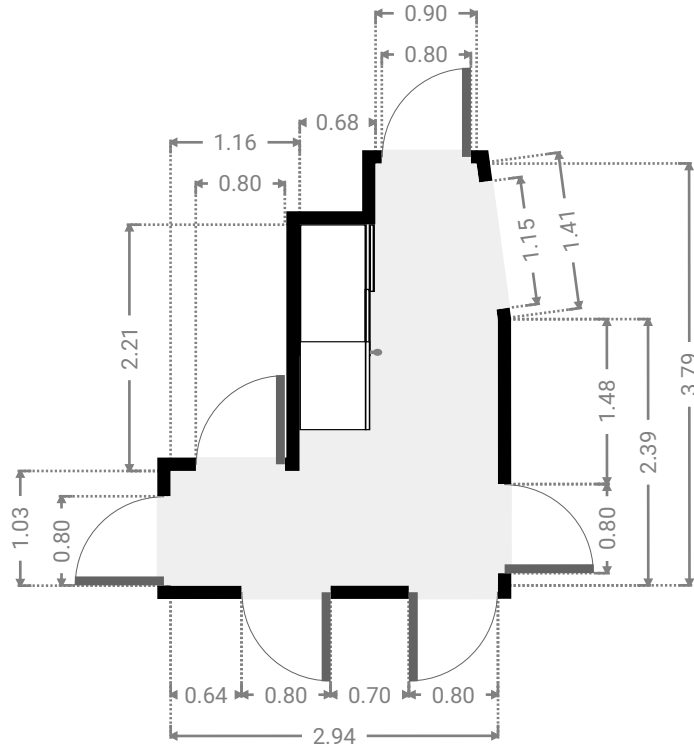
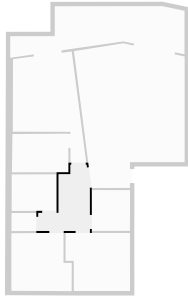
WIDTH: 3.69 m • LENGTH: 3.33 m  
AREA: 11.47 m<sup>2</sup> • PERIMETER: 14.04 m



FLOORS: 1

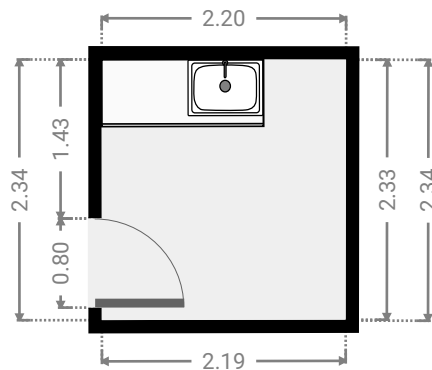
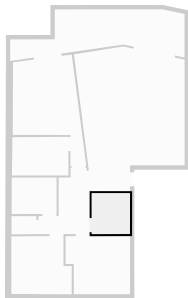
▼ **Hall**  
Ground Floor

WIDTH: 2.94 m • LENGTH: 3.79 m  
AREA: 7.43 m<sup>2</sup> • PERIMETER: 13.28 m



▼ **Laundry Room**  
Ground Floor

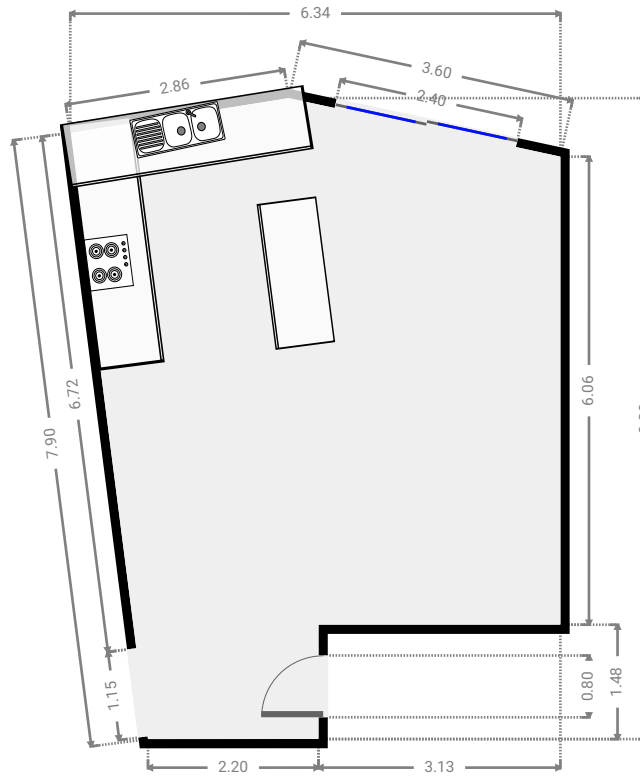
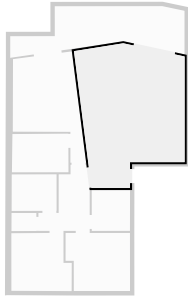
WIDTH: 2.20 m • LENGTH: 2.34 m  
AREA: 5.13 m<sup>2</sup> • PERIMETER: 9.06 m



FLOORS: 1

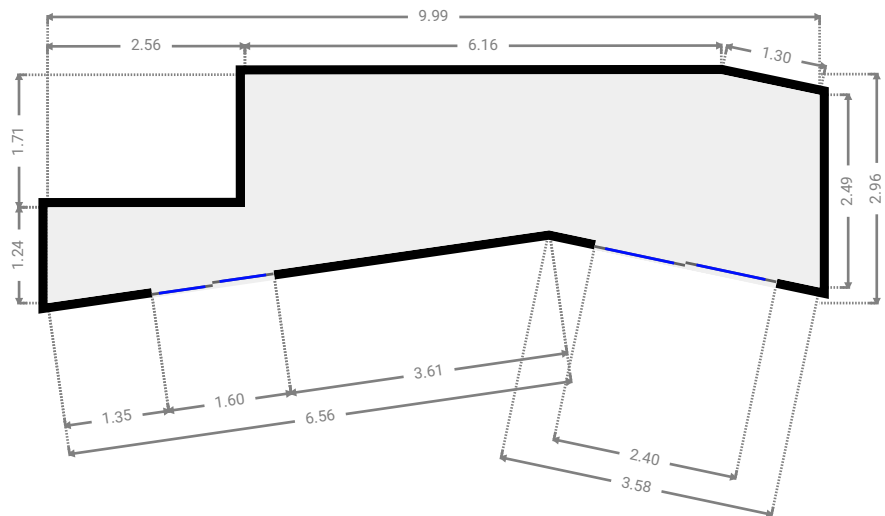
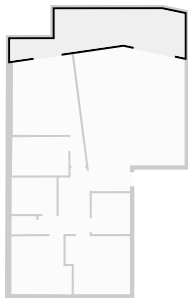
▼ Living Room  
Ground Floor

WIDTH: 6.34 m • LENGTH: 8.30 m  
AREA: 42.08 m<sup>2</sup> • PERIMETER: 27.24 m



▼ Other  
Ground Floor

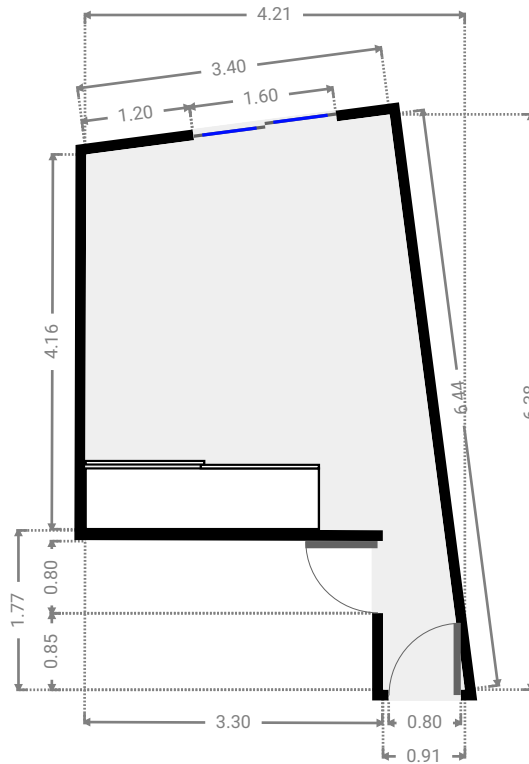
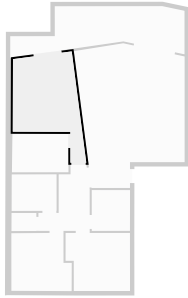
WIDTH: 9.99 m • LENGTH: 2.96 m  
AREA: 19.96 m<sup>2</sup> • PERIMETER: 25.60 m



FLOORS: 1

▼ **Primary Bedroom**  
Ground Floor

WIDTH: 4.21 m • LENGTH: 6.38 m  
AREA: 17.58 m<sup>2</sup> • PERIMETER: 19.97 m



▼ **Toilet**  
Ground Floor

WIDTH: 1.43 m • LENGTH: 1.04 m  
AREA: 1.47 m<sup>2</sup> • PERIMETER: 4.92 m

