

379a Hinds Street

SUBMITTED BY

Ray White Rockhampton Casey
stockers@cqoz.com

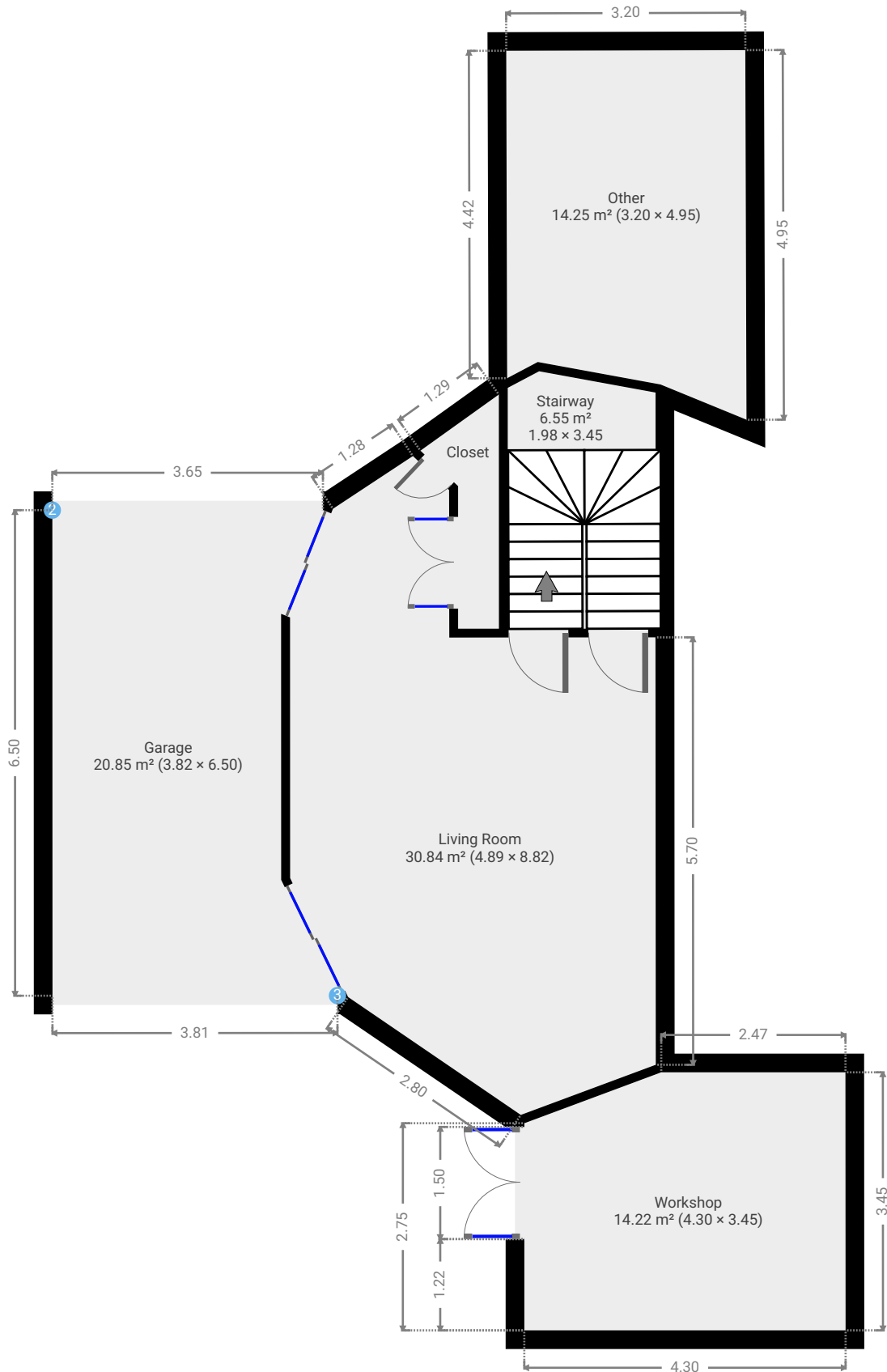
CREATED ON

2022-10-24

Floors

3

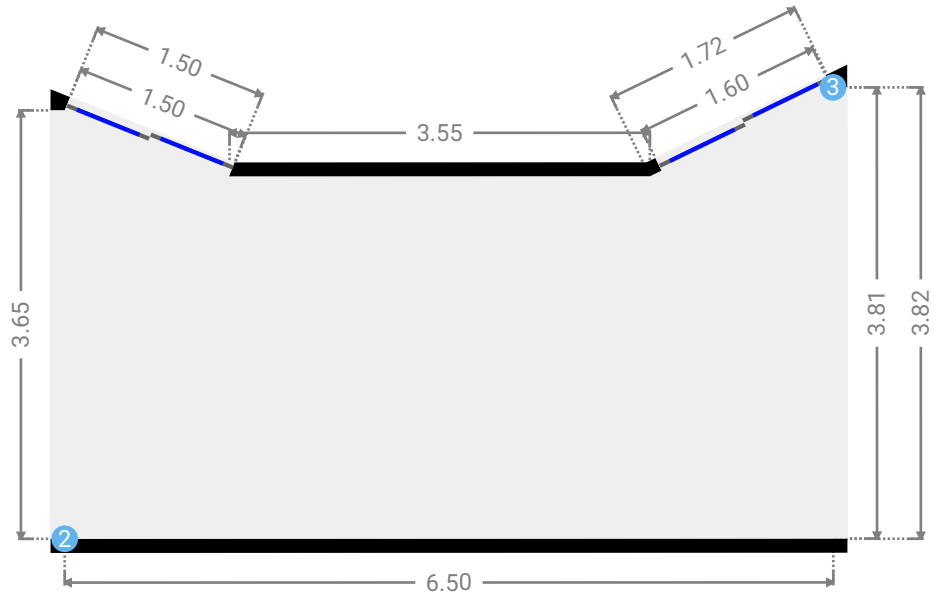
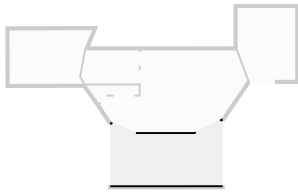
▼ Ground Floor



FLOORS: 3

▼ Garage
Ground Floor

WIDTH: 6.50 m • LENGTH: 3.82 m
AREA: 20.85 m² • PERIMETER: 20.71 m



▼ Garage/Ground Floor

2 OPENING

Height
0.00 m



3 OPENING

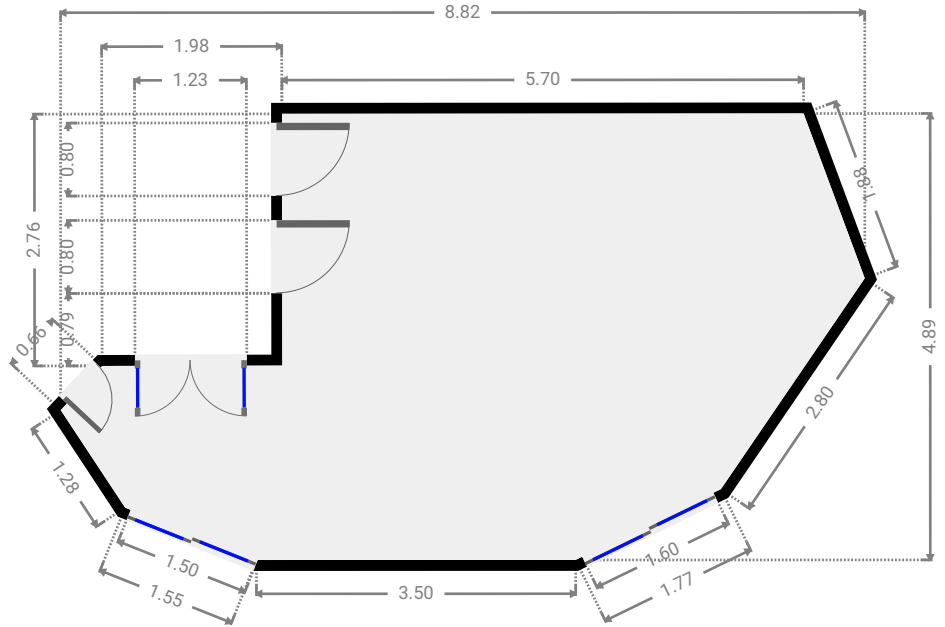
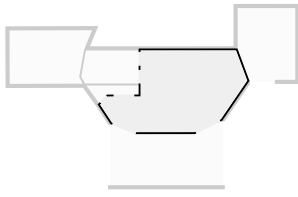
Height
0.00 m



FLOORS: 3

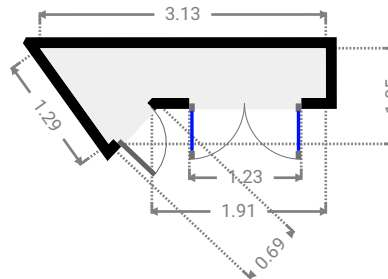
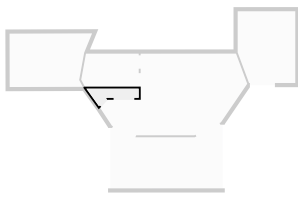
▼ Living Room
Ground Floor

WIDTH: 8.82 m • LENGTH: 4.89 m
AREA: 30.84 m² • PERIMETER: 23.94 m



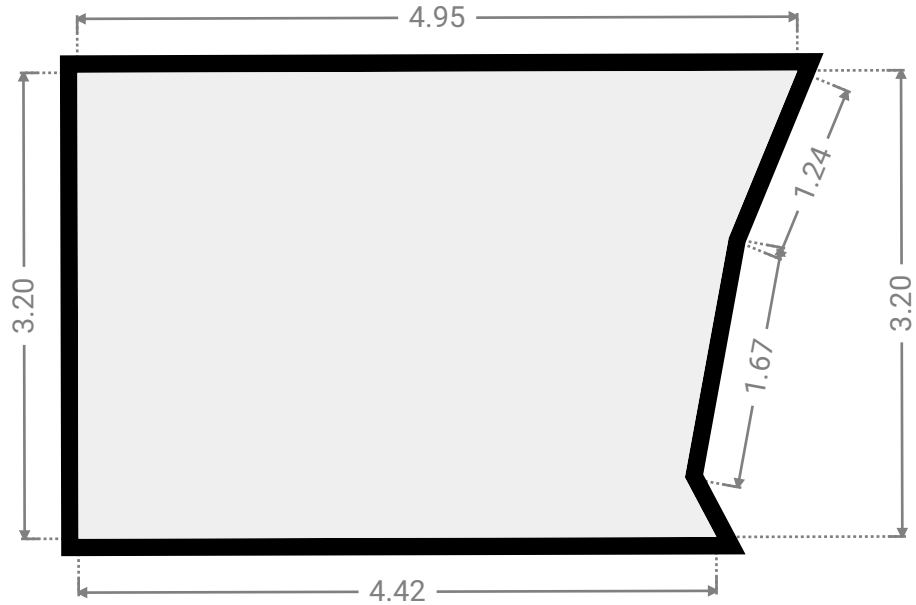
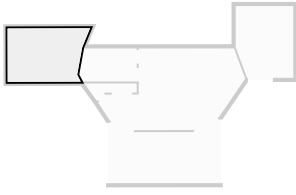
▼ Closet
Ground Floor

WIDTH: 3.13 m • LENGTH: 1.05 m
AREA: 1.81 m² • PERIMETER: 7.57 m



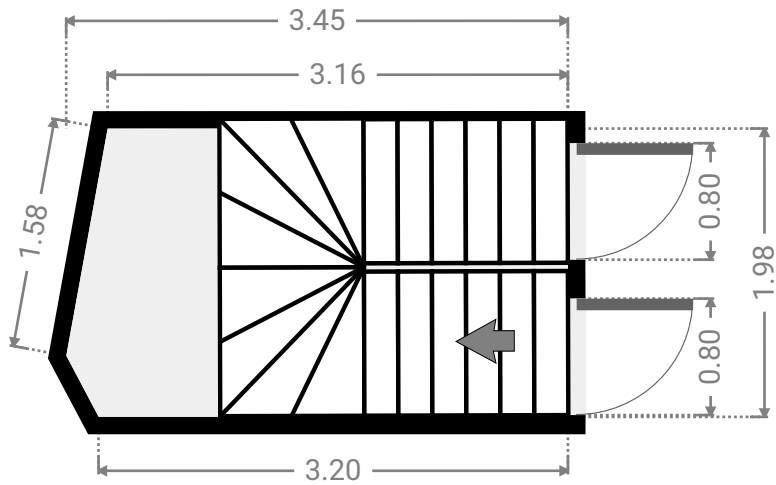
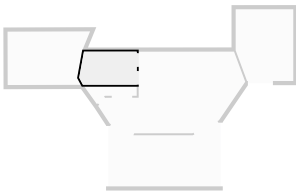
▼ **Other**
Ground Floor

WIDTH: 4.95 m • LENGTH: 3.20 m
AREA: 14.25 m² • PERIMETER: 15.90 m



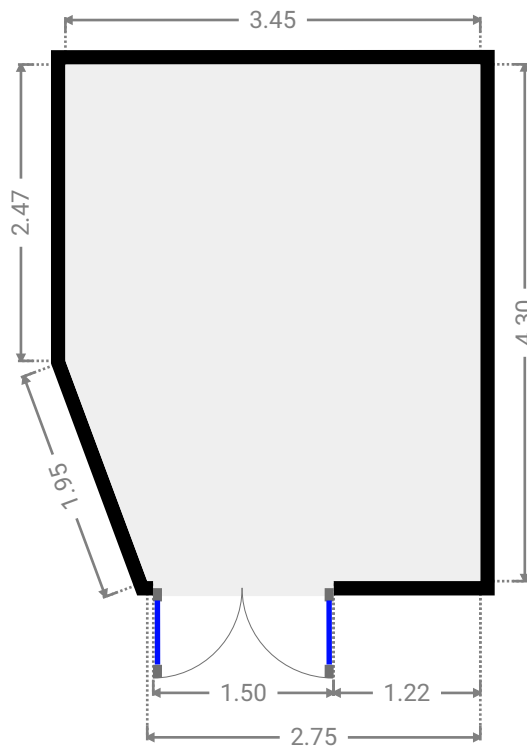
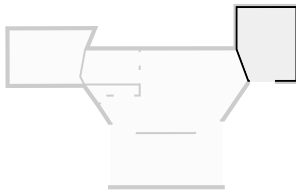
▼ **Stairway**
Ground Floor

WIDTH: 3.45 m • LENGTH: 1.98 m
AREA: 6.55 m² • PERIMETER: 10.42 m

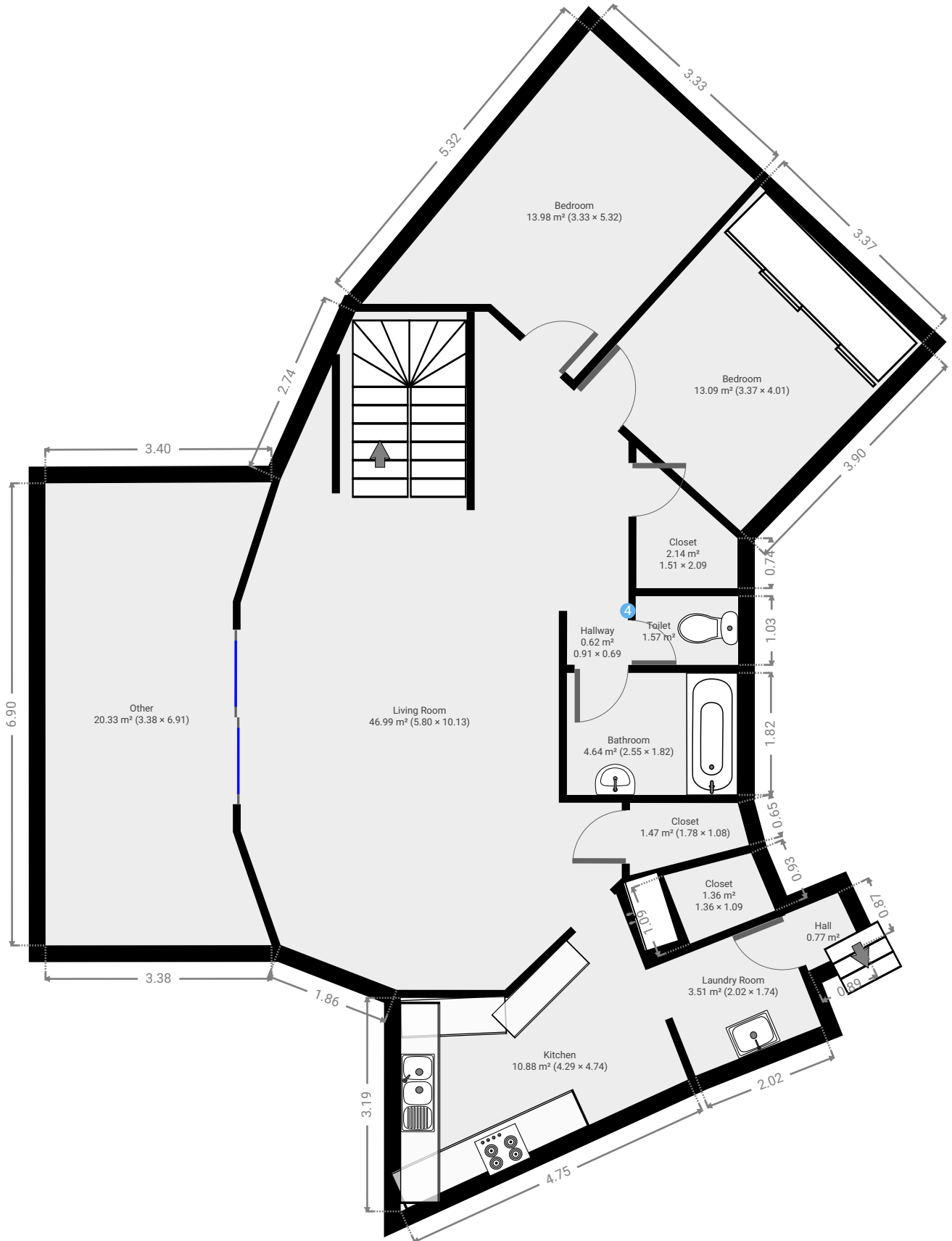


▼ **Workshop**
Ground Floor

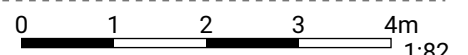
WIDTH: 3.45 m • LENGTH: 4.30 m
AREA: 14.22 m² • PERIMETER: 14.94 m



▼ 1st Floor

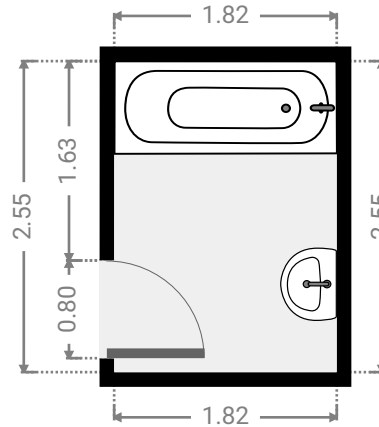
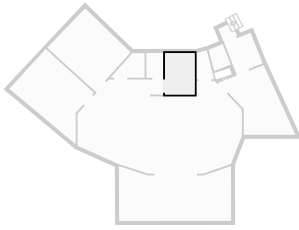


THIS FLOORPLAN IS PROVIDED WITHOUT WARRANTY OF ANY KIND. SENSOPIA DISCLAIMS ANY WARRANTY INCLUDING, WITHOUT LIMITATION, SATISFACTORY QUALITY OR ACCURACY OF DIMENSIONS.



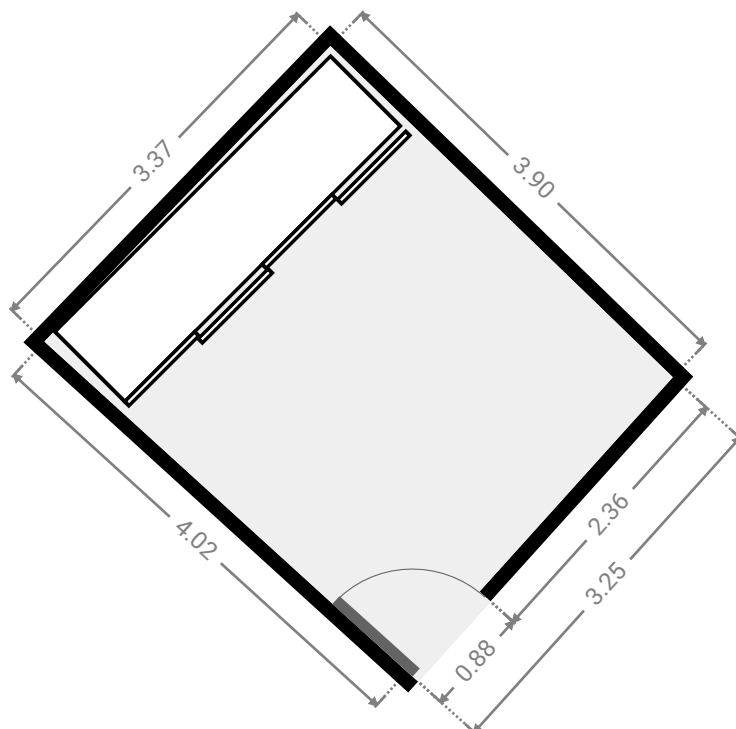
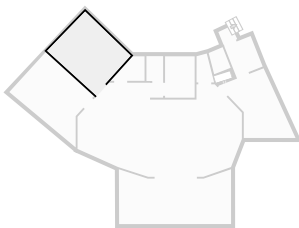
▼ **Bathroom**
1st Floor

WIDTH: 1.82 m • LENGTH: 2.55 m
AREA: 4.64 m² • PERIMETER: 8.74 m



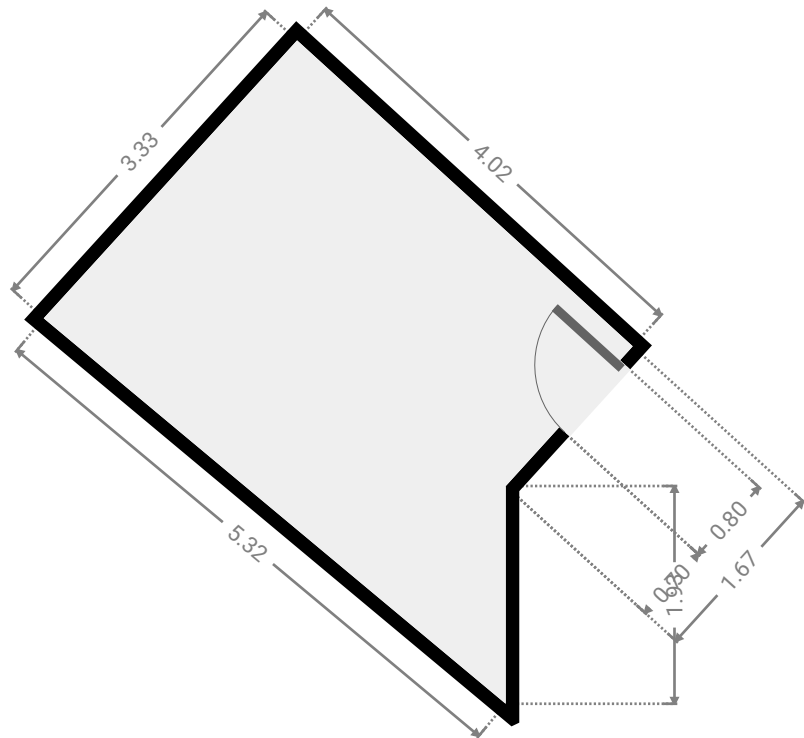
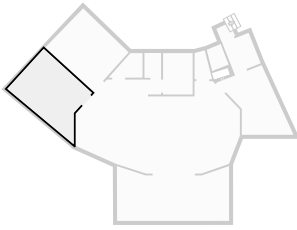
▼ **Bedroom**
1st Floor

WIDTH: 4.01 m • LENGTH: 3.37 m
AREA: 13.09 m² • PERIMETER: 14.53 m



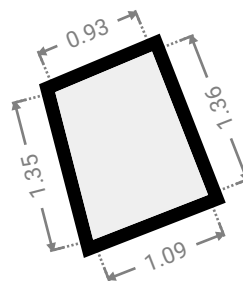
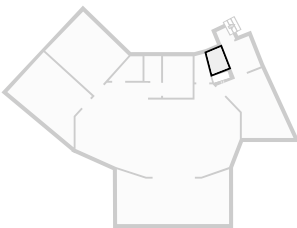
▼ **Bedroom**
1st Floor

WIDTH: 5.32 m • LENGTH: 3.33 m
AREA: 13.98 m² • PERIMETER: 16.27 m



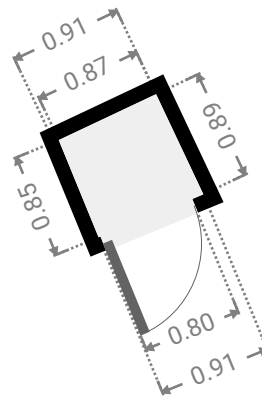
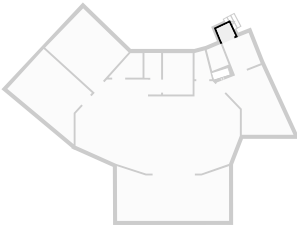
▼ **Closet**
1st Floor

WIDTH: 1.09 m • LENGTH: 1.36 m
AREA: 1.36 m² • PERIMETER: 4.73 m



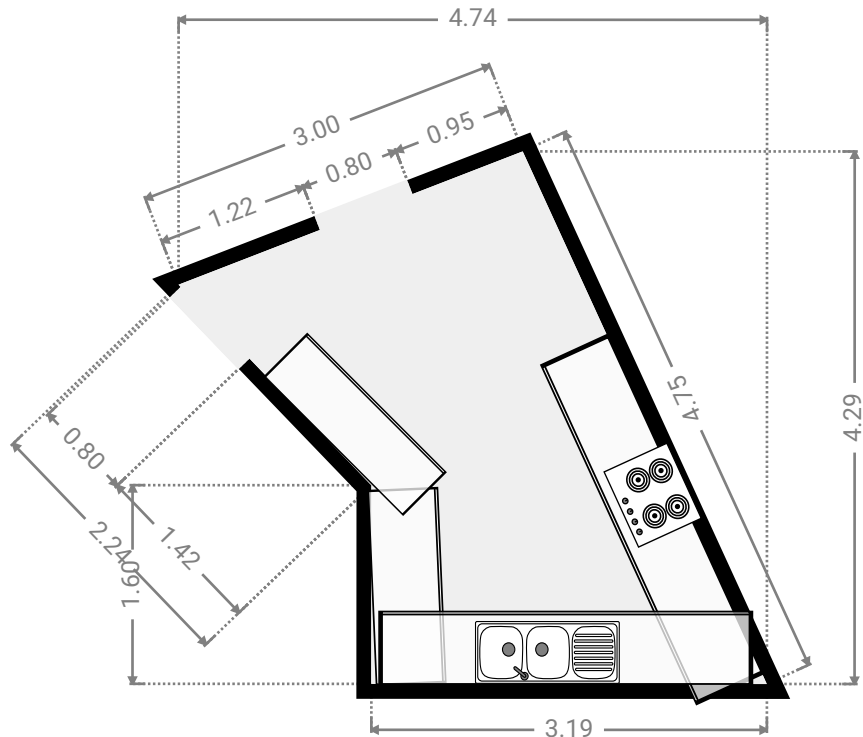
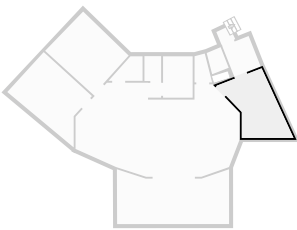
▼ Hall
1st Floor

WIDTH: 0.91 m • LENGTH: 0.89 m
AREA: 0.77 m² • PERIMETER: 3.52 m



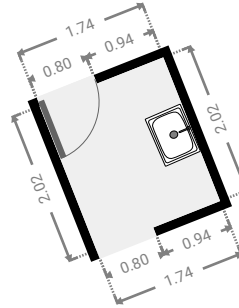
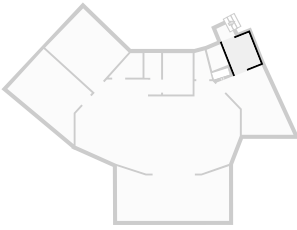
▼ Kitchen
1st Floor

WIDTH: 4.74 m • LENGTH: 4.29 m
AREA: 10.88 m² • PERIMETER: 14.72 m



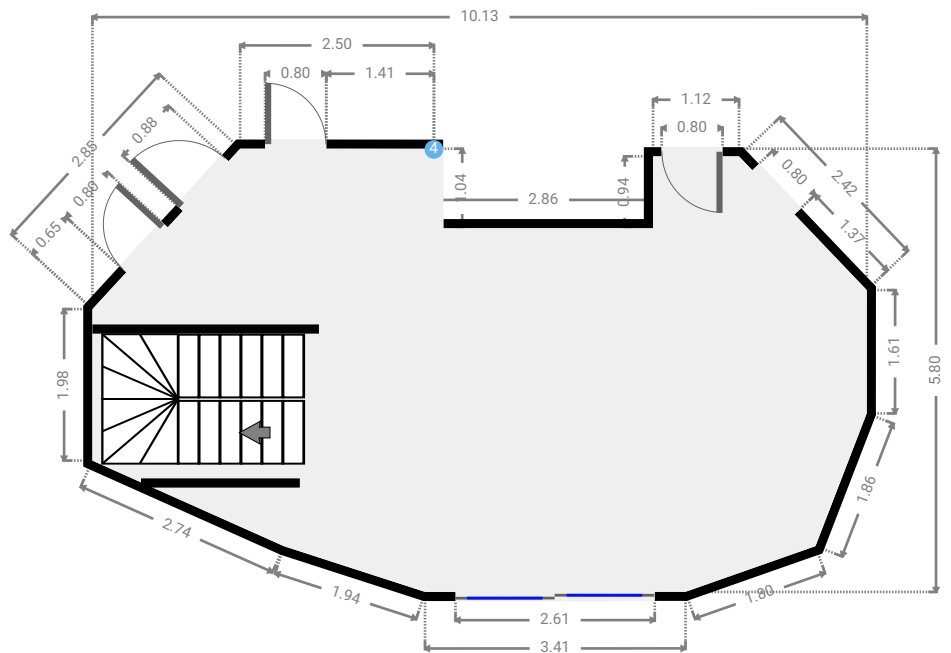
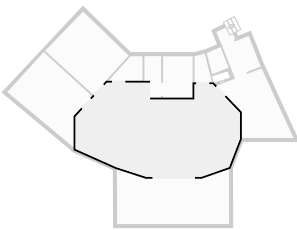
▼ **Laundry Room**
1st Floor

WIDTH: 1.74 m • LENGTH: 2.02 m
AREA: 3.51 m² • PERIMETER: 7.52 m



▼ **Living Room**
1st Floor

WIDTH: 10.13 m • LENGTH: 5.80 m
AREA: 46.99 m² • PERIMETER: 29.12 m



▼ Living Room/1st Floor

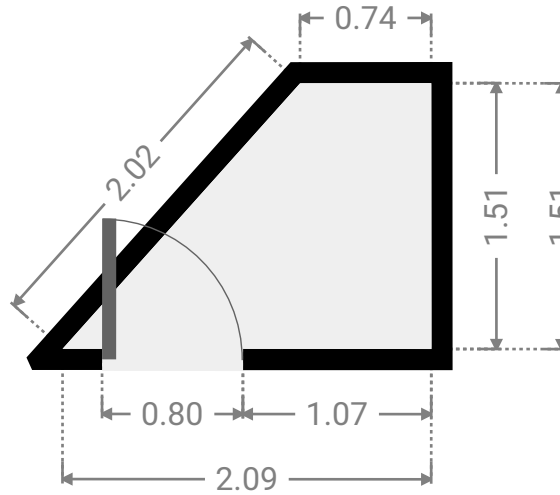
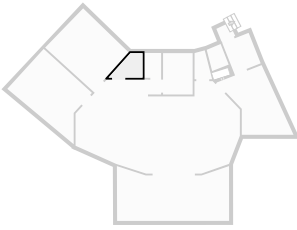
4 OPENING

Height
0.00 m



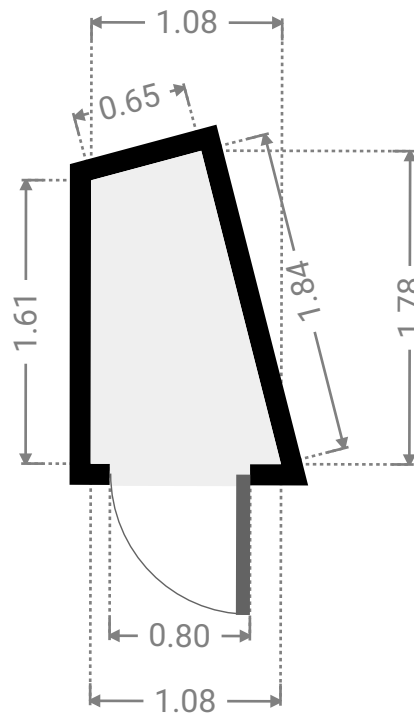
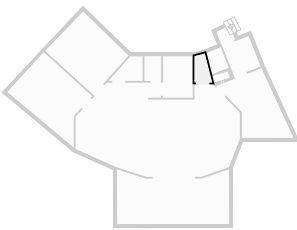
▼ **Closet**
1st Floor

WIDTH: 2.09 m • LENGTH: 1.51 m
AREA: 2.14 m² • PERIMETER: 6.37 m



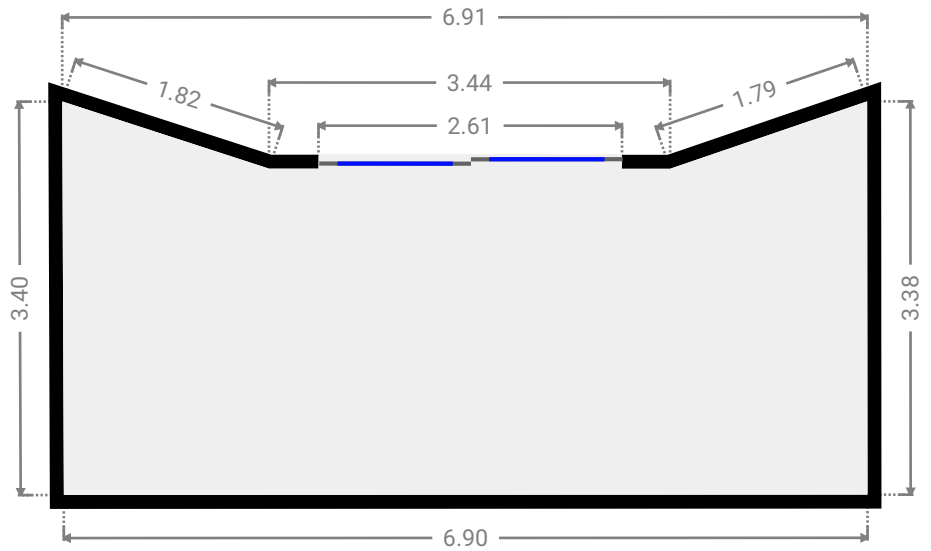
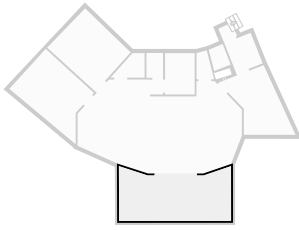
▼ **Closet**
1st Floor

WIDTH: 1.08 m • LENGTH: 1.78 m
AREA: 1.47 m² • PERIMETER: 5.18 m



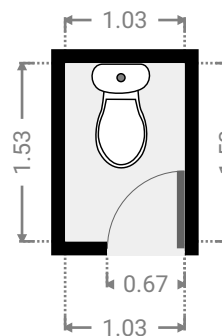
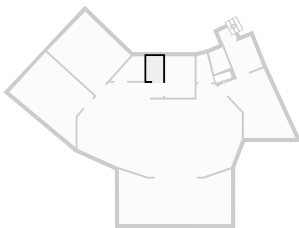
▼ Other
1st Floor

WIDTH: 6.91 m • LENGTH: 3.38 m
AREA: 20.33 m² • PERIMETER: 20.75 m

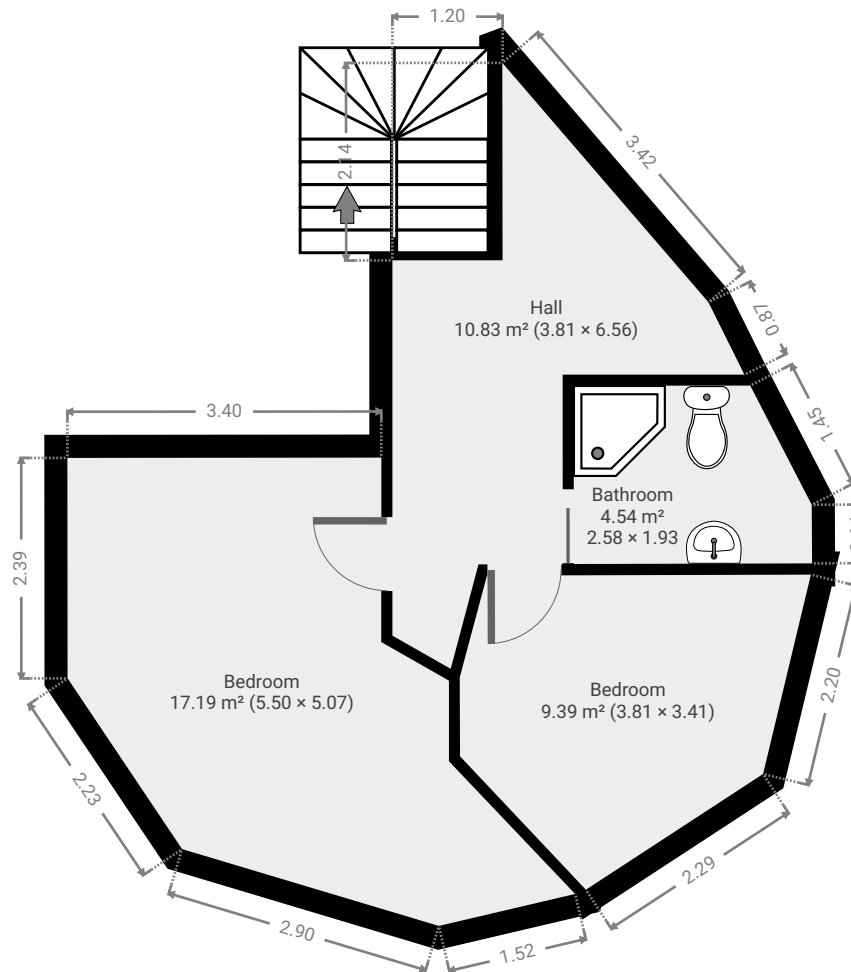


▼ Toilet
1st Floor

WIDTH: 1.03 m • LENGTH: 1.53 m
AREA: 1.57 m² • PERIMETER: 5.11 m



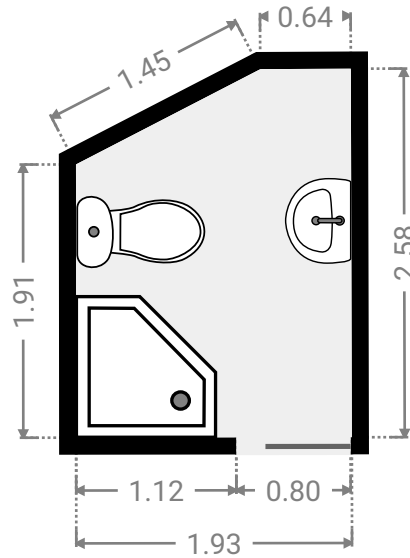
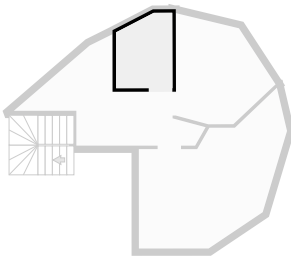
▼ 2nd Floor



FLOORS: 3

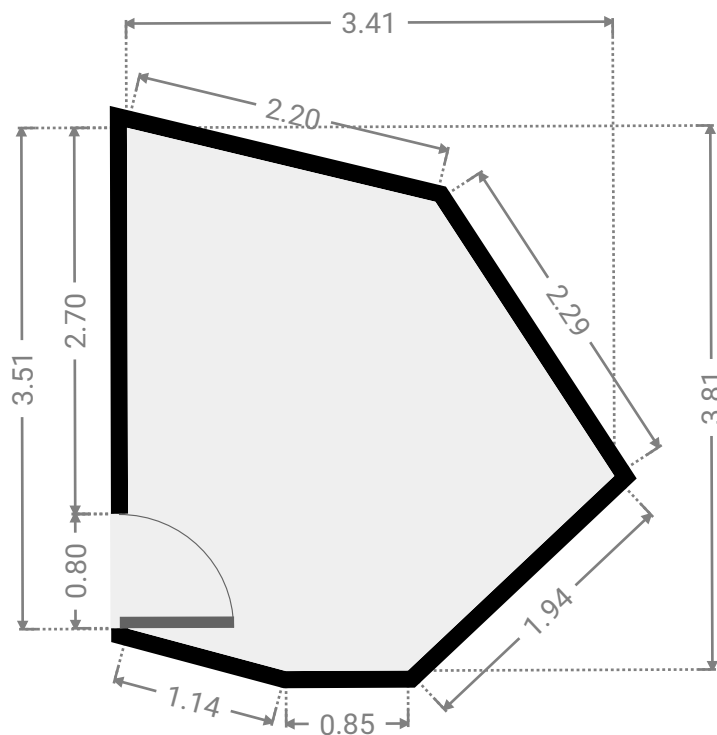
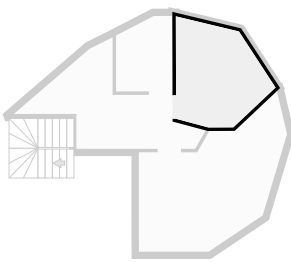
▼ **Bathroom**
2nd Floor

WIDTH: 1.93 m • LENGTH: 2.58 m
AREA: 4.54 m² • PERIMETER: 8.51 m



▼ **Bedroom**
2nd Floor

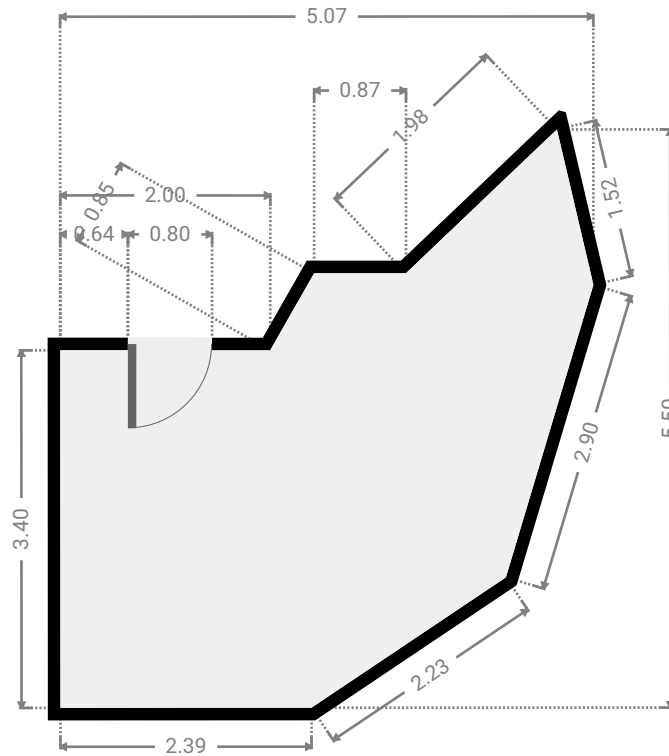
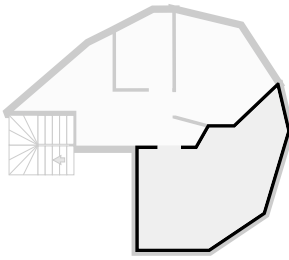
WIDTH: 3.41 m • LENGTH: 3.81 m
AREA: 9.39 m² • PERIMETER: 12.00 m



FLOORS: 3

▼ **Bedroom**
2nd Floor

WIDTH: 5.07 m • LENGTH: 5.50 m
AREA: 17.19 m² • PERIMETER: 18.13 m



▼ **Hall**
2nd Floor

WIDTH: 6.56 m • LENGTH: 3.81 m
AREA: 10.83 m² • PERIMETER: 18.53 m

