

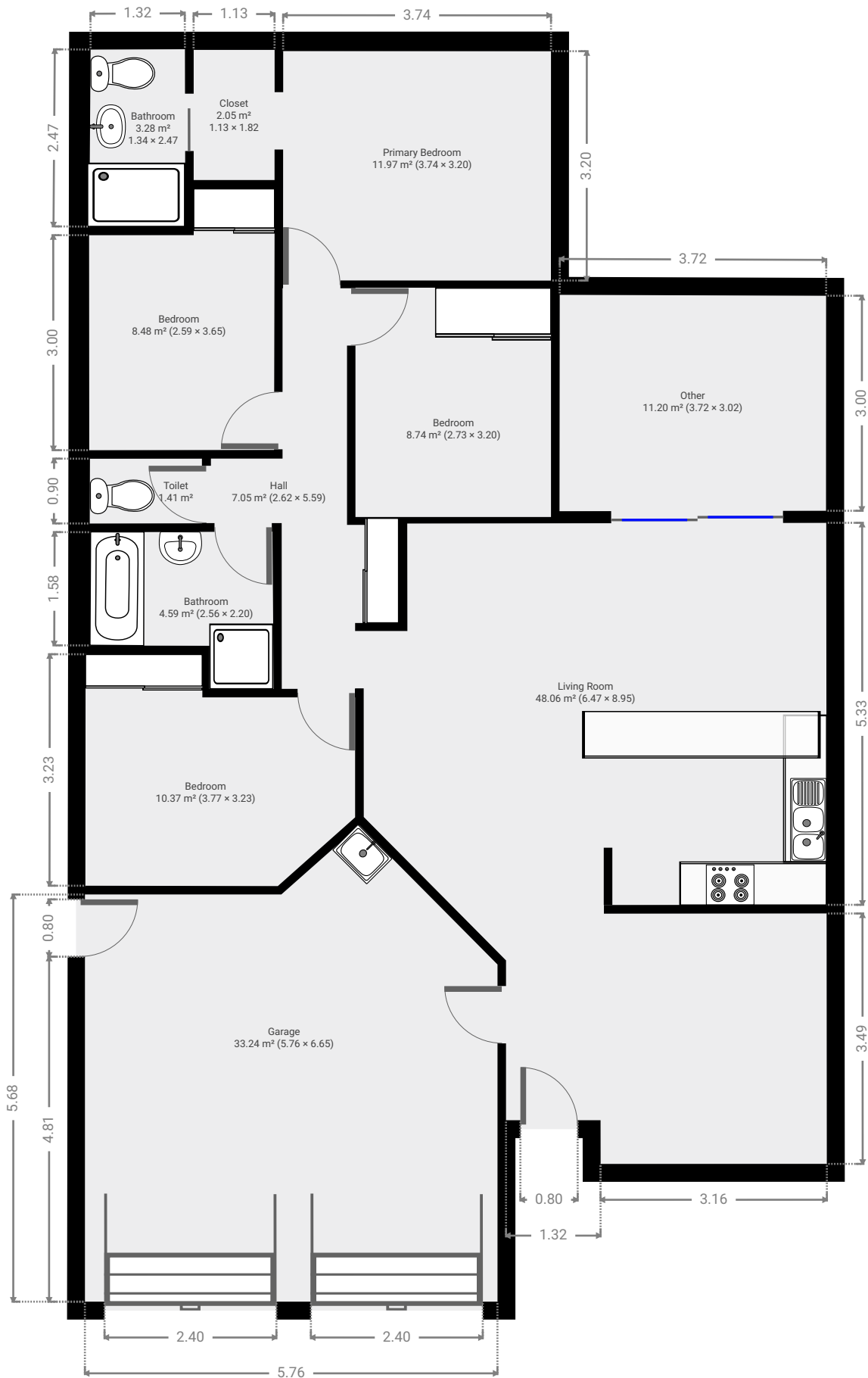
369 Farm Street

SUBMITTED BY
Ray White Rockhampton Casey
stockers@cqoz.com

CREATED ON
2022-08-03

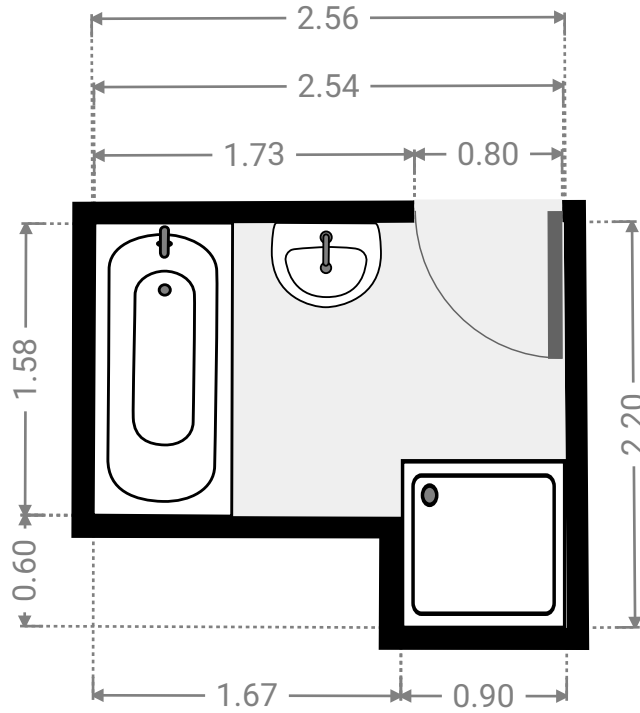
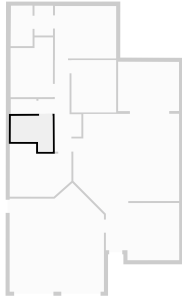
Floors 1

▼ Ground Floor



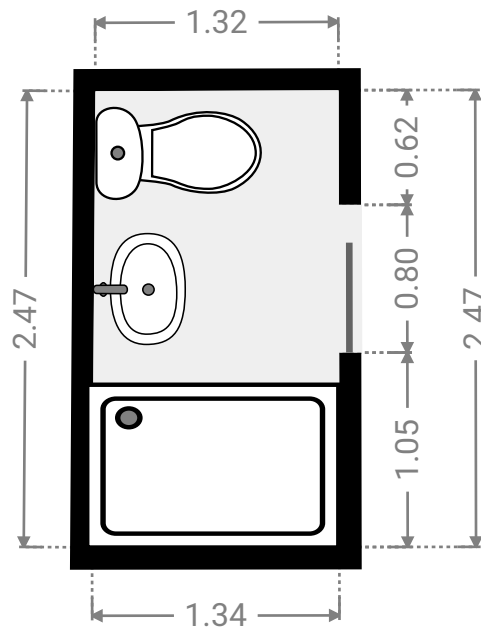
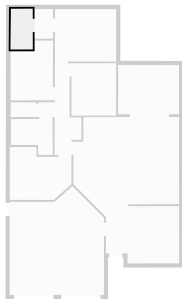
▼ Bathroom
Ground Floor

WIDTH: 2.56 m • LENGTH: 2.20 m
AREA: 4.59 m² • PERIMETER: 9.49 m



▼ Bathroom
Ground Floor

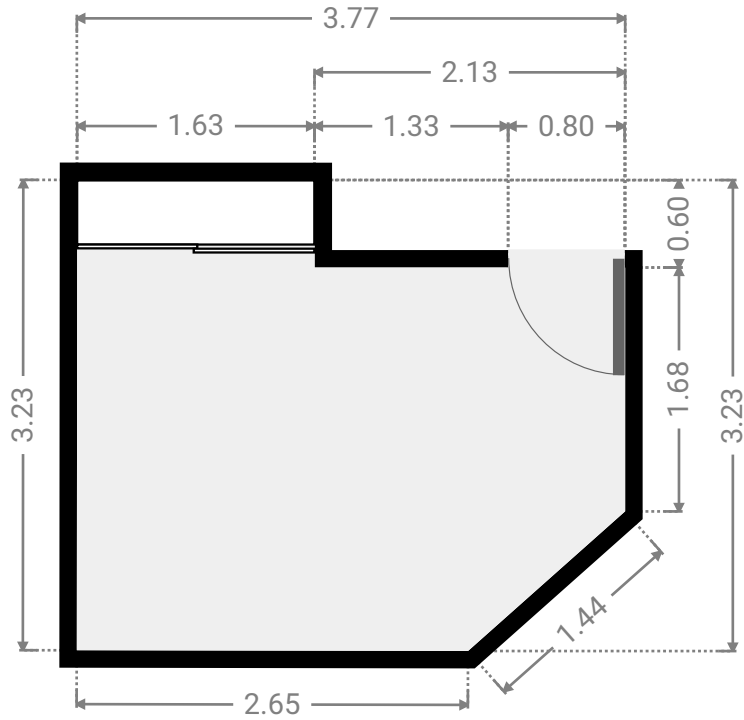
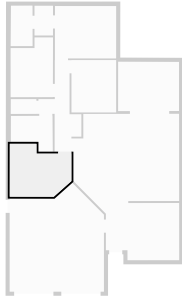
WIDTH: 1.34 m • LENGTH: 2.47 m
AREA: 3.28 m² • PERIMETER: 7.60 m



FLOORS: 1

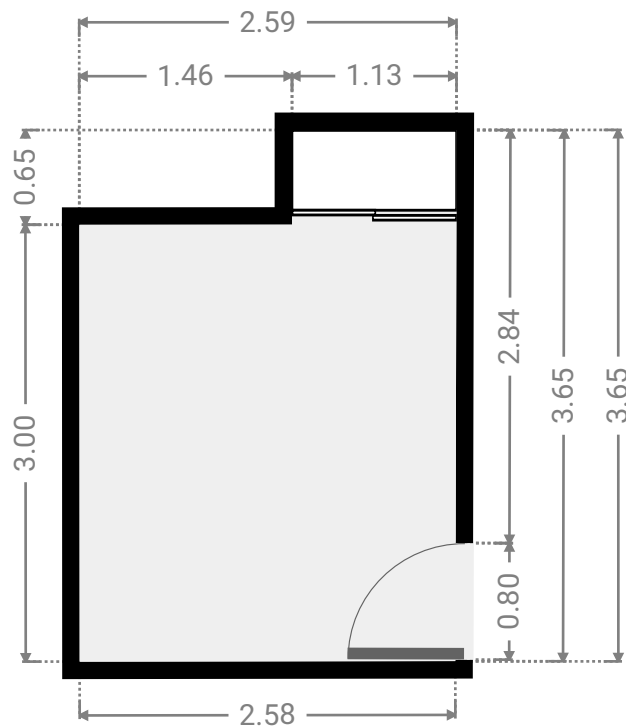
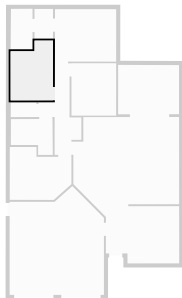
▼ **Bedroom**
Ground Floor

WIDTH: 3.77 m • LENGTH: 3.23 m
AREA: 10.37 m² • PERIMETER: 13.40 m



▼ **Bedroom**
Ground Floor

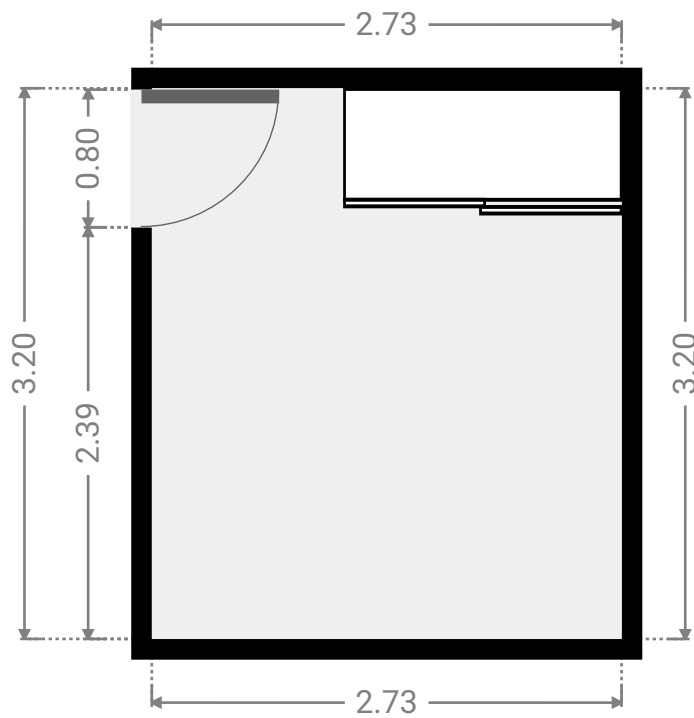
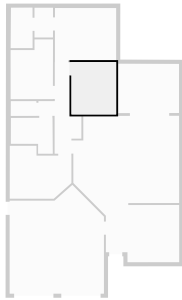
WIDTH: 2.59 m • LENGTH: 3.65 m
AREA: 8.48 m² • PERIMETER: 12.47 m



FLOORS: 1

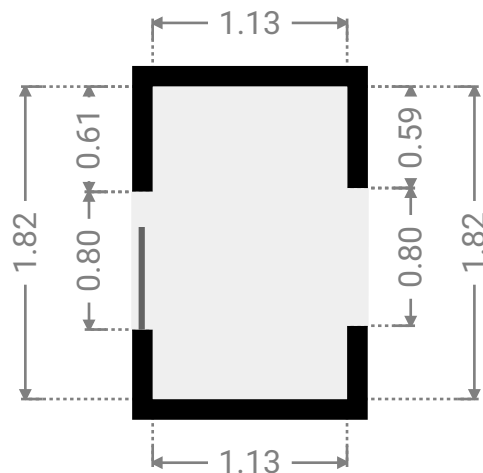
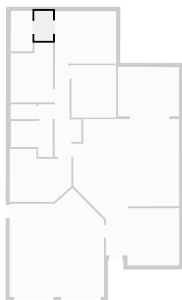
▼ **Bedroom**
Ground Floor

WIDTH: 2.73 m • LENGTH: 3.20 m
AREA: 8.74 m² • PERIMETER: 11.86 m



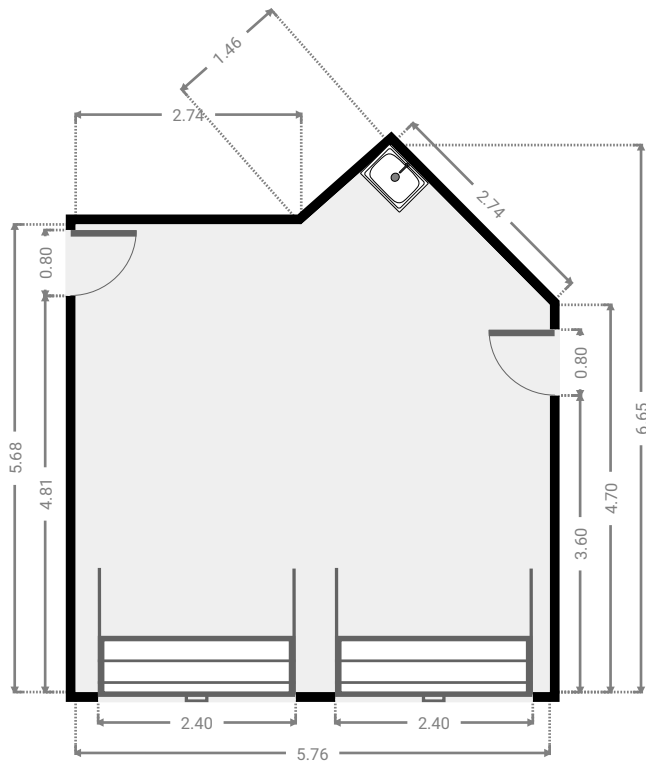
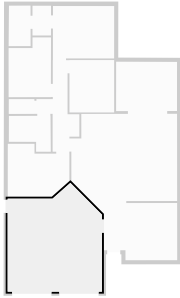
▼ **Closet**
Ground Floor

WIDTH: 1.13 m • LENGTH: 1.82 m
AREA: 2.05 m² • PERIMETER: 5.89 m



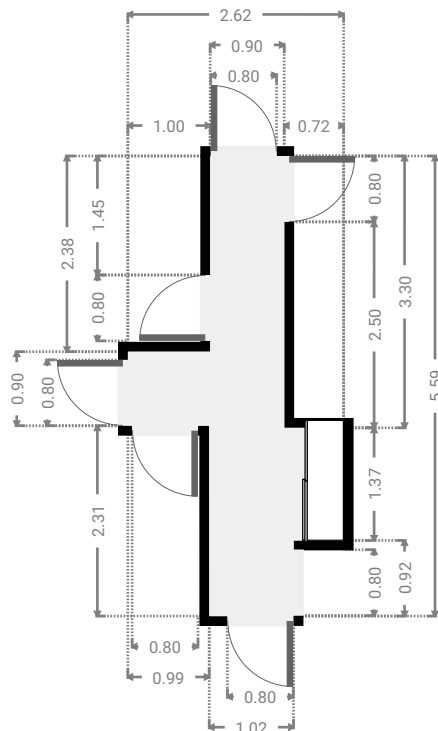
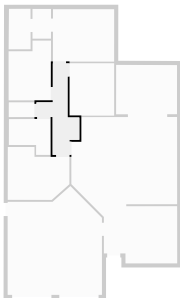
▼ **Garage**
Ground Floor

WIDTH: 5.76 m • LENGTH: 6.65 m
AREA: 33.24 m² • PERIMETER: 23.08 m



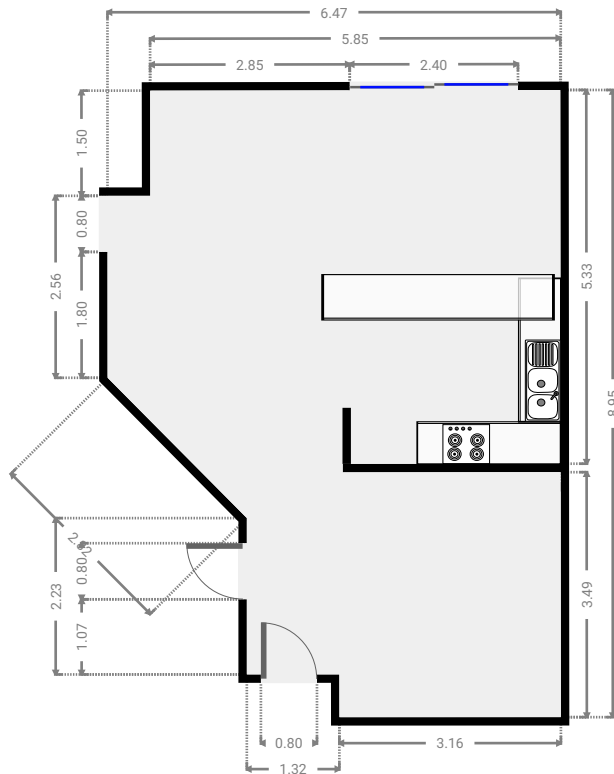
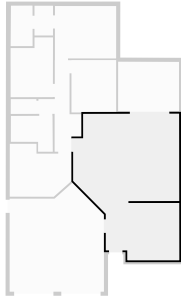
▼ **Hall**
Ground Floor

WIDTH: 2.62 m • LENGTH: 5.59 m
AREA: 7.05 m² • PERIMETER: 16.42 m



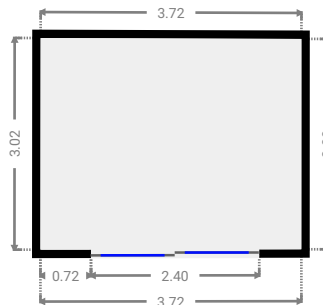
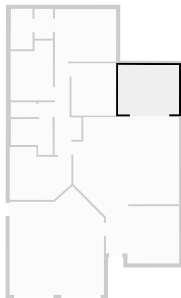
▼ Living Room
Ground Floor

WIDTH: 6.47 m • LENGTH: 8.95 m
AREA: 48.06 m² • PERIMETER: 35.86 m



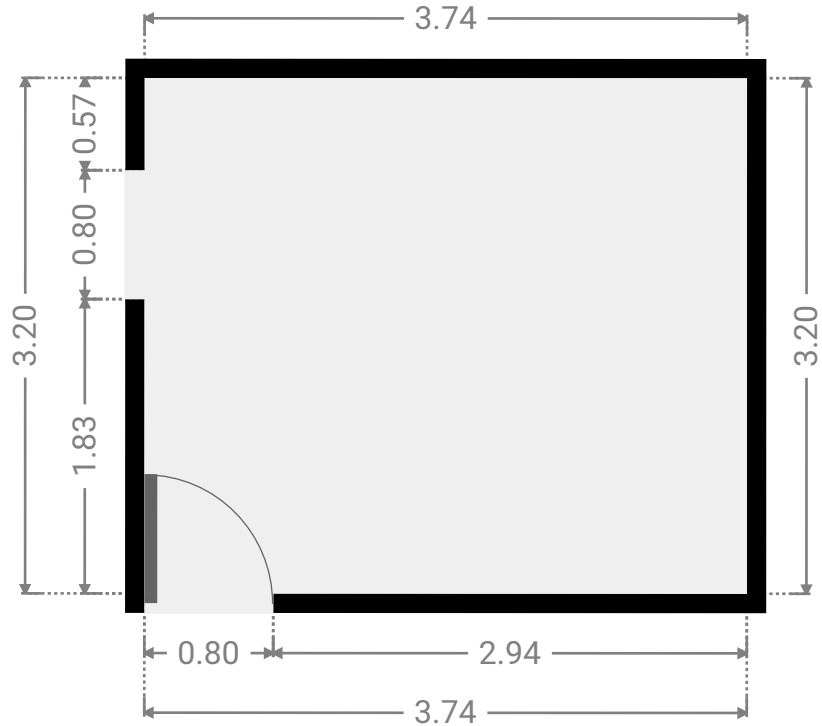
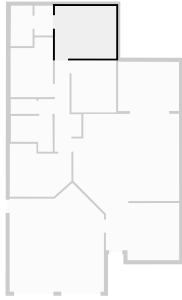
▼ Other
Ground Floor

WIDTH: 3.72 m • LENGTH: 3.02 m
AREA: 11.20 m² • PERIMETER: 13.46 m



▼ **Primary Bedroom**
Ground Floor

WIDTH: 3.74 m • LENGTH: 3.20 m
AREA: 11.97 m² • PERIMETER: 13.88 m



▼ **Toilet**
Ground Floor

WIDTH: 1.57 m • LENGTH: 0.90 m
AREA: 1.41 m² • PERIMETER: 4.93 m

