

36 Lamb Avenue

SUBMITTED BY

Ray White Rockhampton Casey
stockers@cqoz.com

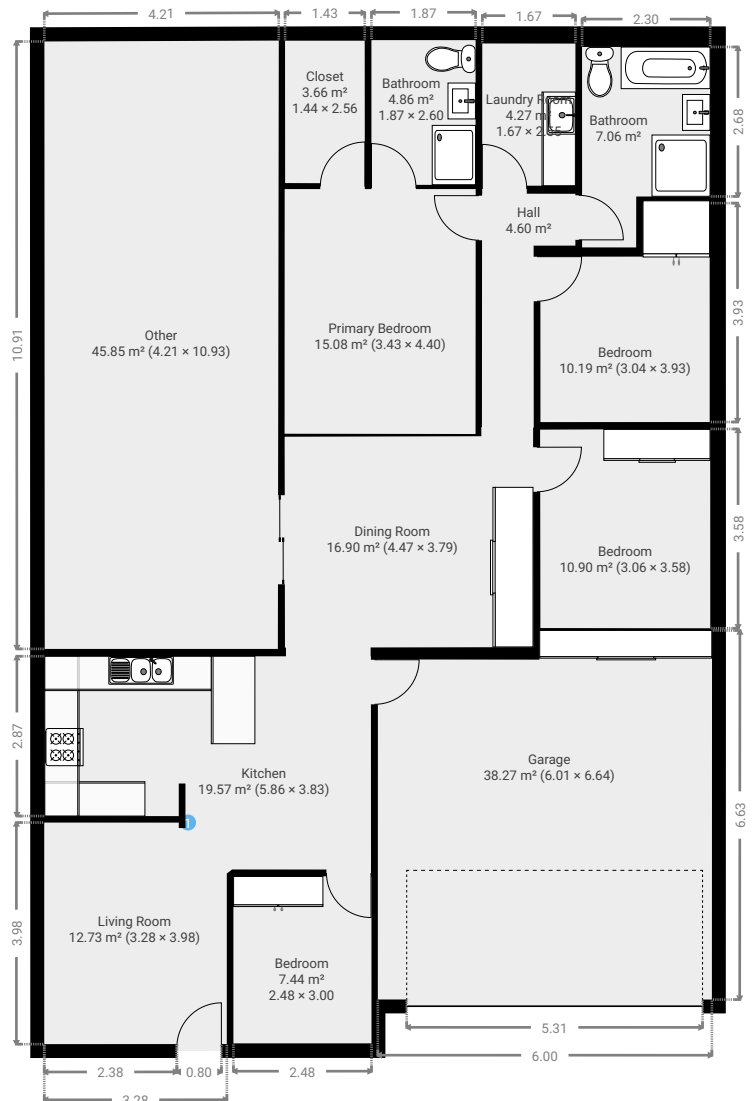
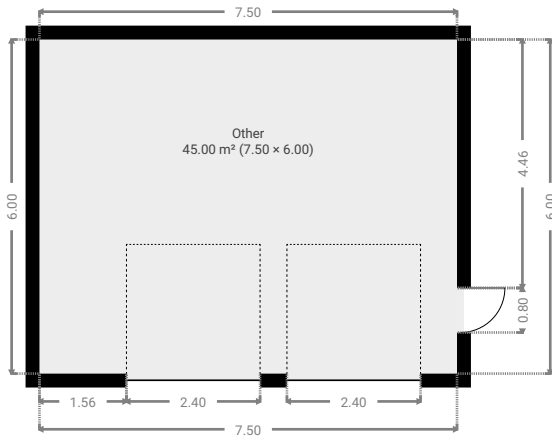
CREATED ON

2022-11-28

Floors

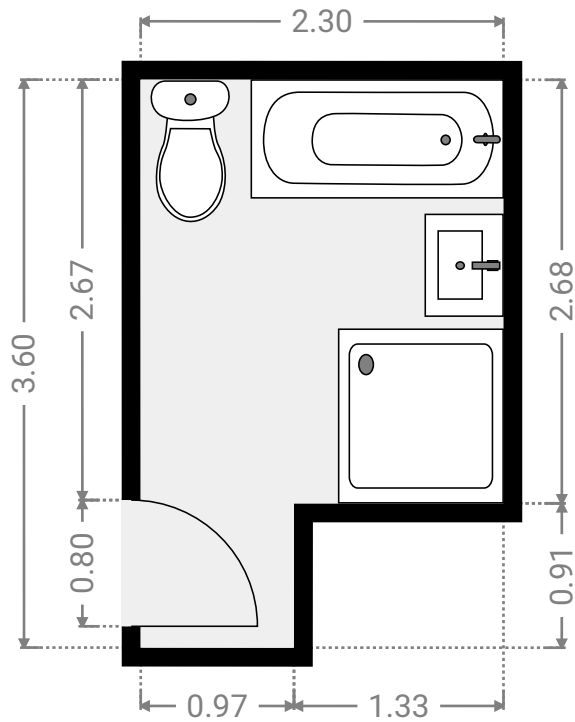
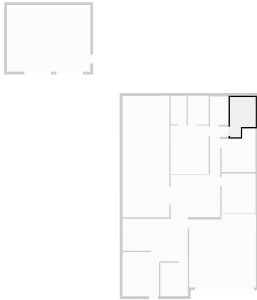
1

▼ Ground Floor



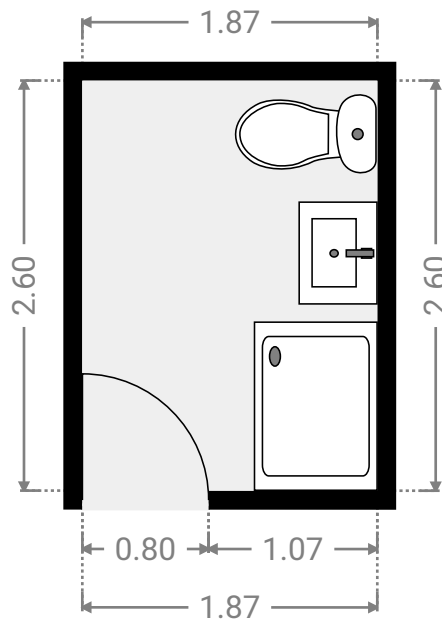
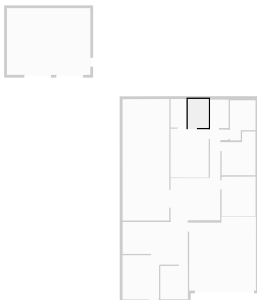
▼ Bathroom
Ground Floor

WIDTH: 2.30 m • LENGTH: 3.60 m
AREA: 7.06 m² • PERIMETER: 11.80 m



▼ Bathroom
Ground Floor

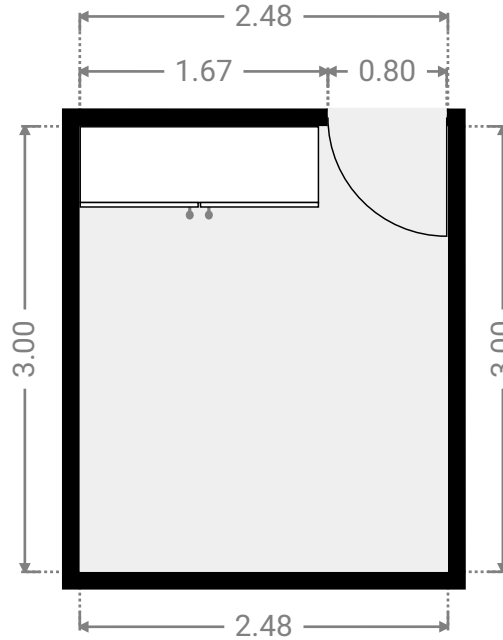
WIDTH: 1.87 m • LENGTH: 2.60 m
AREA: 4.86 m² • PERIMETER: 8.94 m



FLOORS: 1

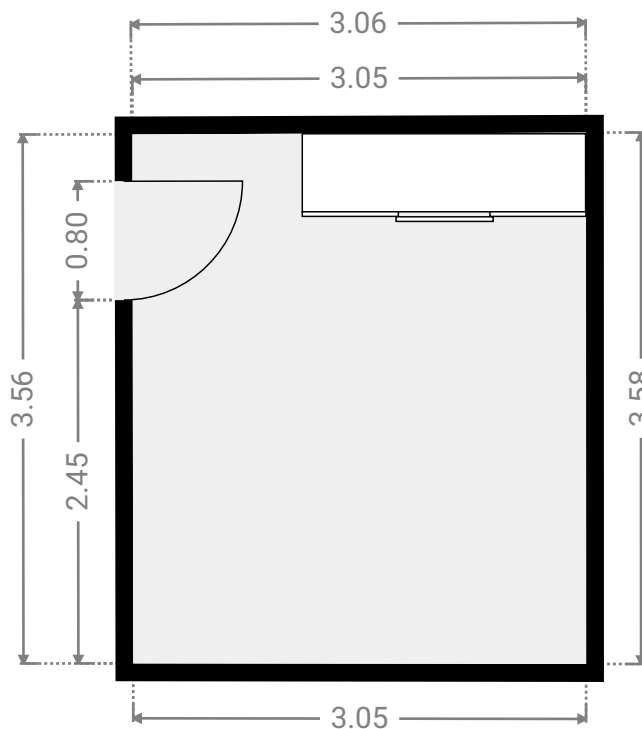
▼ **Bedroom**
Ground Floor

WIDTH: 2.48 m • LENGTH: 3.00 m
AREA: 7.44 m² • PERIMETER: 10.96 m



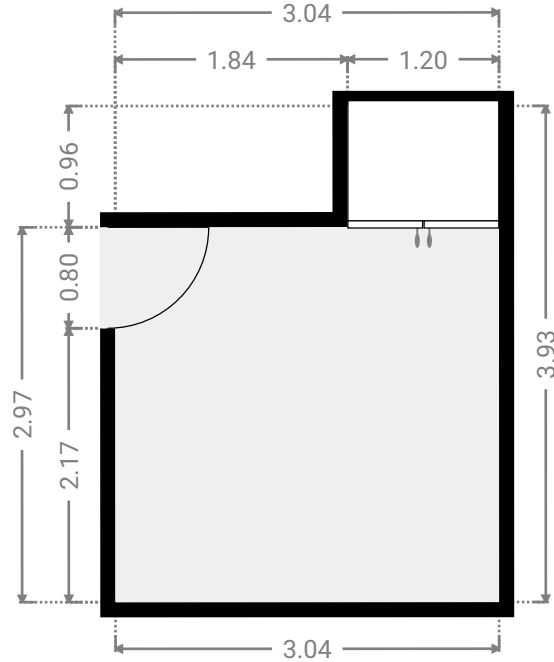
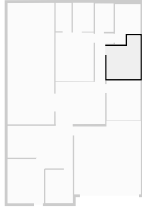
▼ **Bedroom**
Ground Floor

WIDTH: 3.06 m • LENGTH: 3.58 m
AREA: 10.90 m² • PERIMETER: 13.25 m



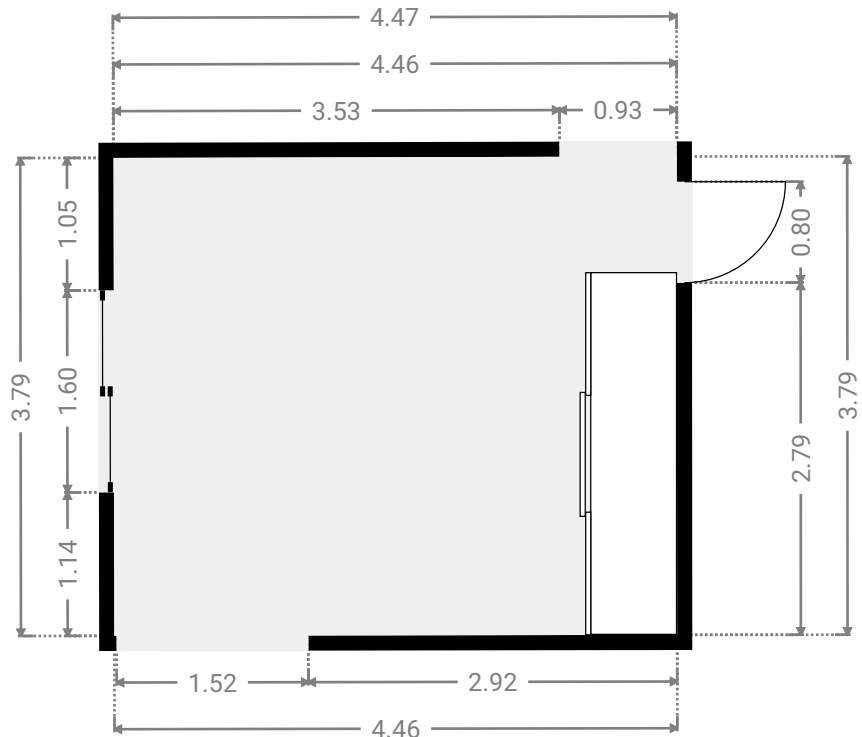
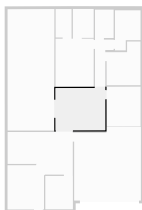
▼ **Bedroom**
Ground Floor

WIDTH: 3.04 m • LENGTH: 3.93 m
AREA: 10.19 m² • PERIMETER: 13.94 m



▼ **Dining Room**
Ground Floor

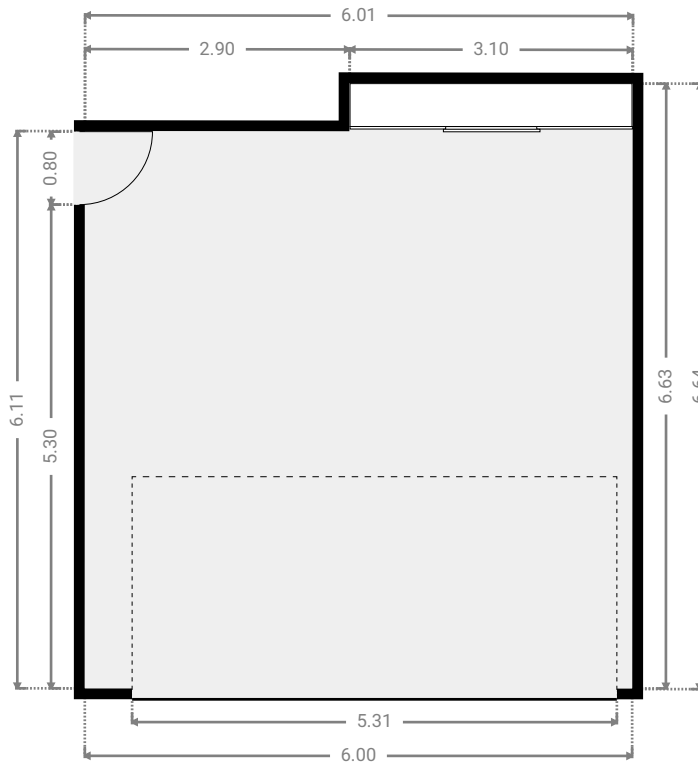
WIDTH: 4.47 m • LENGTH: 3.79 m
AREA: 16.90 m² • PERIMETER: 16.50 m



FLOORS: 1

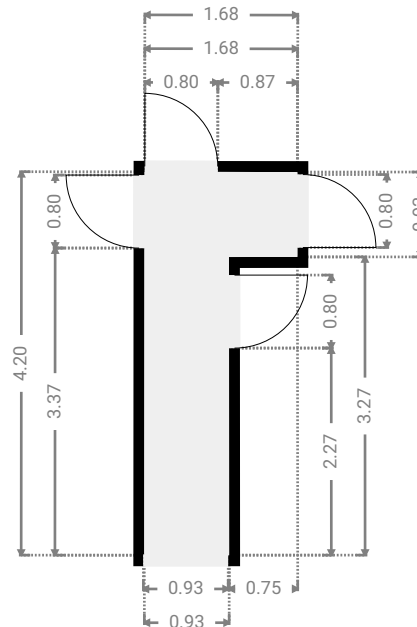
▼ Garage
Ground Floor

WIDTH: 6.01 m • LENGTH: 6.64 m
AREA: 38.27 m² • PERIMETER: 25.27 m



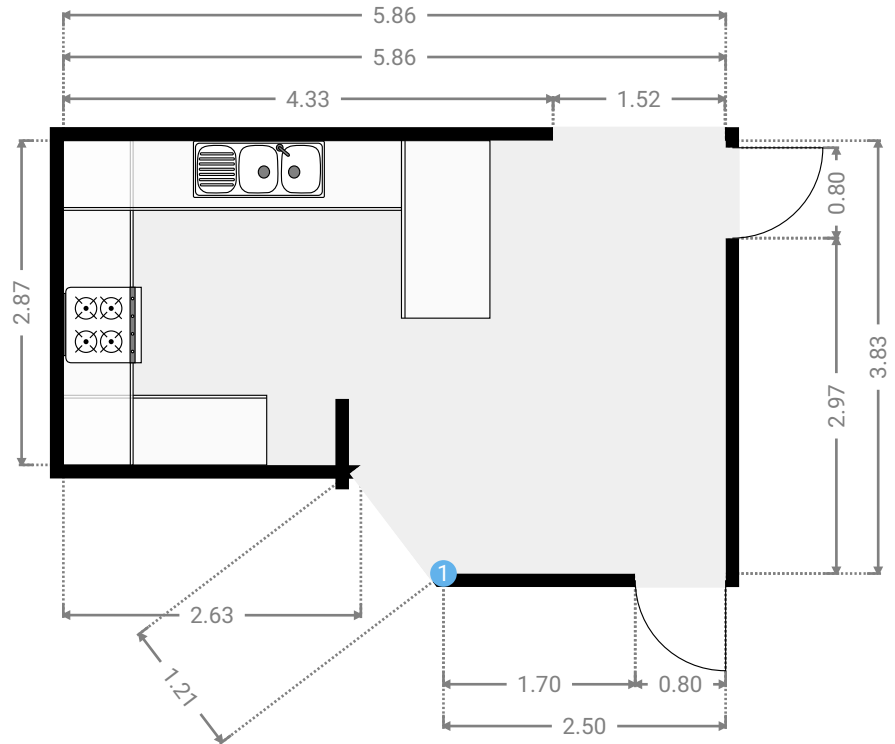
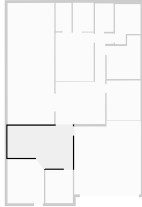
▼ Hall
Ground Floor

WIDTH: 1.68 m • LENGTH: 4.20 m
AREA: 4.60 m² • PERIMETER: 11.76 m



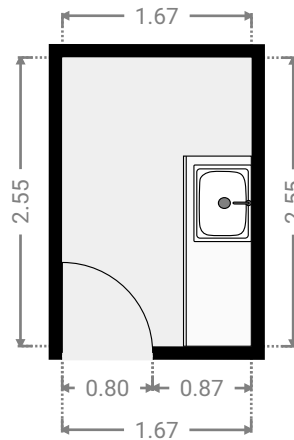
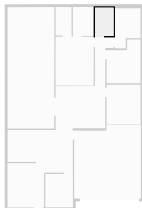
▼ Kitchen
Ground Floor

WIDTH: 5.86 m • LENGTH: 3.83 m
AREA: 19.57 m² • PERIMETER: 18.89 m



▼ Laundry Room
Ground Floor

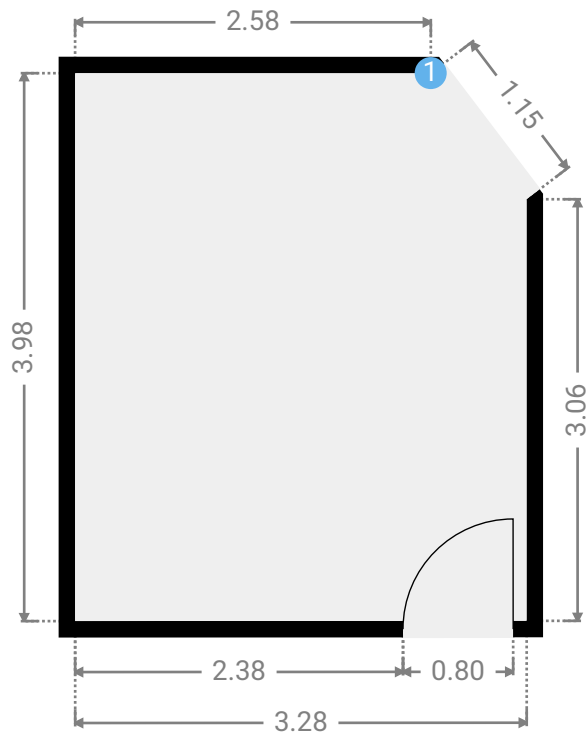
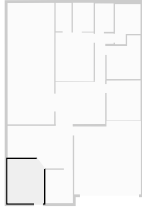
WIDTH: 1.67 m • LENGTH: 2.55 m
AREA: 4.27 m² • PERIMETER: 8.45 m



FLOORS: 1

▼ **Living Room**
Ground Floor

WIDTH: 3.28 m • LENGTH: 3.98 m
AREA: 12.73 m² • PERIMETER: 14.06 m



▼ **Living Room/Ground Floor**

1 OPENING

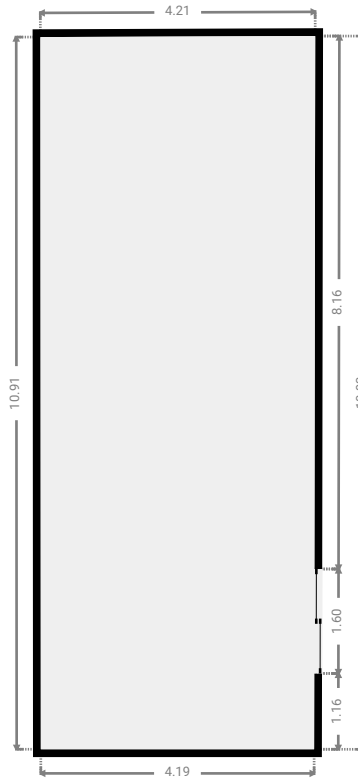
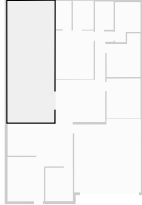
Height
0.00 m



FLOORS: 1

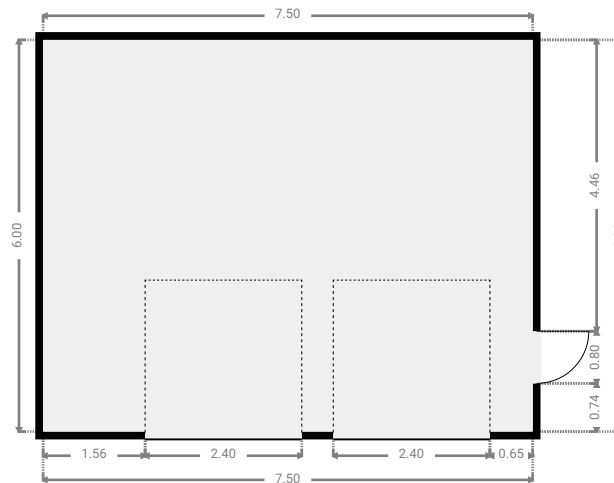
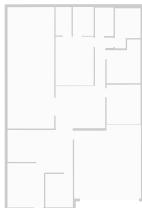
▼ **Other**
Ground Floor

WIDTH: 4.21 m • LENGTH: 10.93 m
AREA: 45.85 m² • PERIMETER: 30.23 m



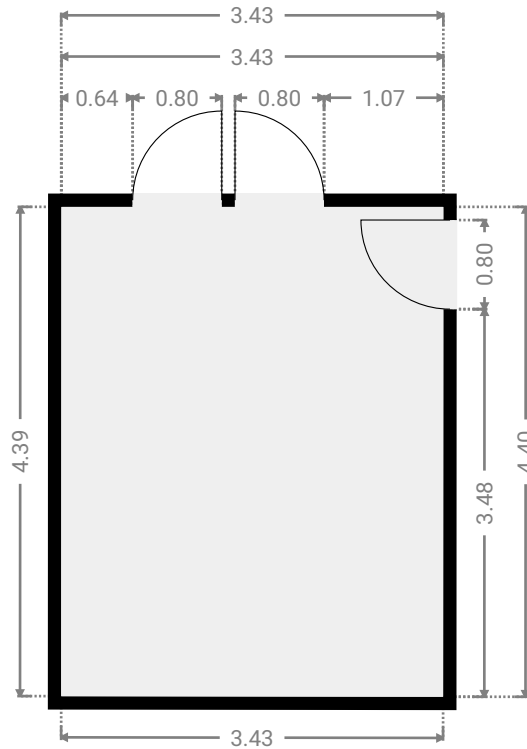
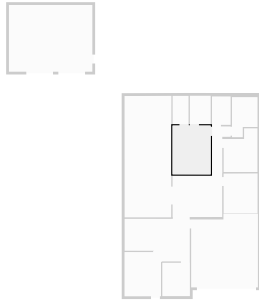
▼ **Other**
Ground Floor

WIDTH: 7.50 m • LENGTH: 6.00 m
AREA: 45.00 m² • PERIMETER: 27.00 m



▼ **Primary Bedroom**
Ground Floor

WIDTH: 3.43 m • LENGTH: 4.40 m
AREA: 15.08 m² • PERIMETER: 15.65 m



▼ **Closet**
Ground Floor

WIDTH: 1.44 m • LENGTH: 2.56 m
AREA: 3.66 m² • PERIMETER: 7.98 m

