

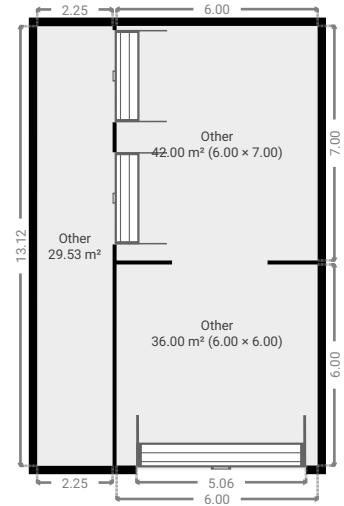
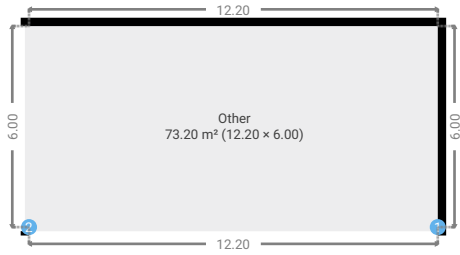
36 Kristie Drive

SUBMITTED BY
Ray White Rockhampton Casey
stockers@cqoz.com

CREATED ON
2022-02-07

Floors
1

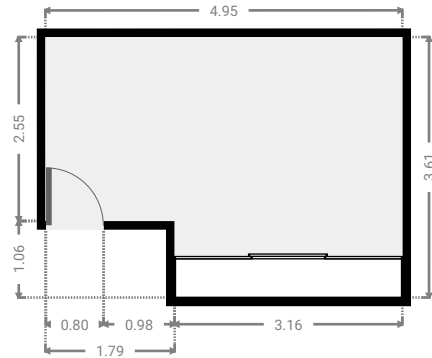
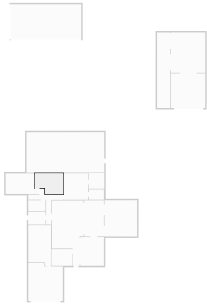
▼ Ground Floor



FLOORS: 1

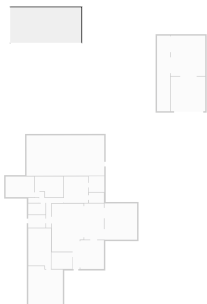
▼ Bedroom Ground Floor

WIDTH: 4.95 m • LENGTH: 3.61 m
AREA: 15.98 m² • PERIMETER: 17.12 m



▼ Other Ground Floor

WIDTH: 12.20 m • LENGTH: 6.00 m
AREA: 73.20 m² • PERIMETER: 36.40 m



▼ Other/Ground Floor

1 OPENING

Height
0.00 m



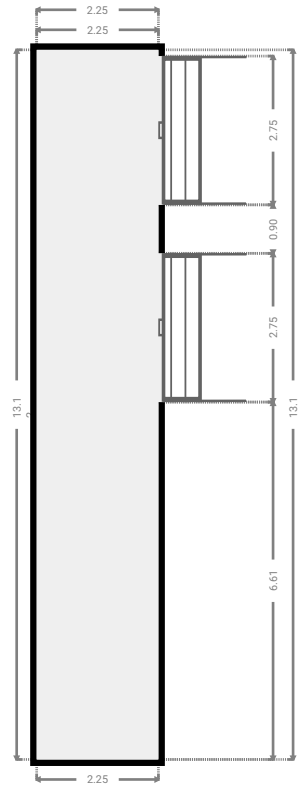
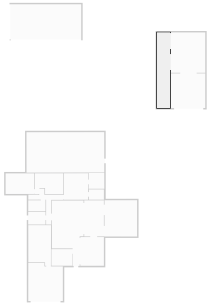
2 OPENING

Height
0.00 m



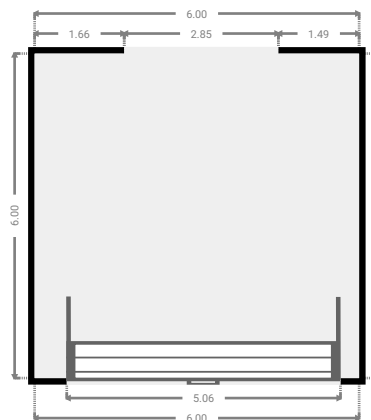
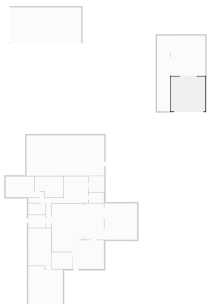
▼ Other Ground Floor

WIDTH: 2.25 m • LENGTH: 13.12 m
AREA: 29.53 m² • PERIMETER: 30.74 m



▼ Other Ground Floor

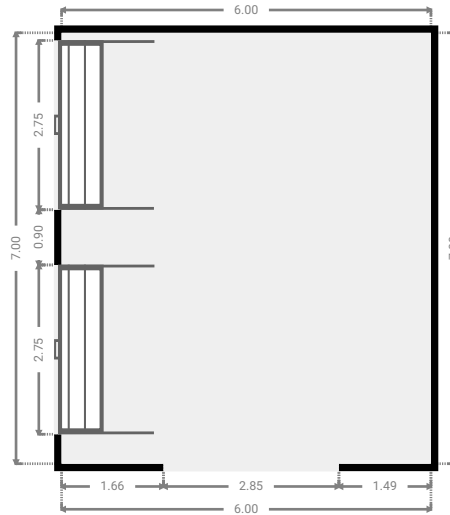
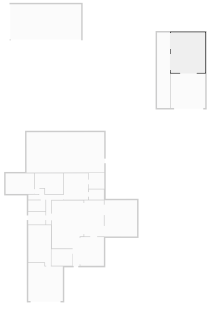
WIDTH: 6.00 m • LENGTH: 6.00 m
AREA: 36.00 m² • PERIMETER: 24.00 m



FLOORS: 1

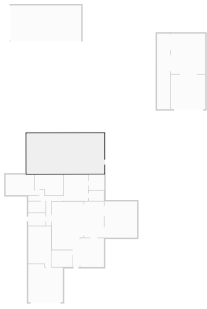
▼ Other
Ground Floor

WIDTH: 6.00 m • LENGTH: 7.00 m
AREA: 42.00 m² • PERIMETER: 26.00 m



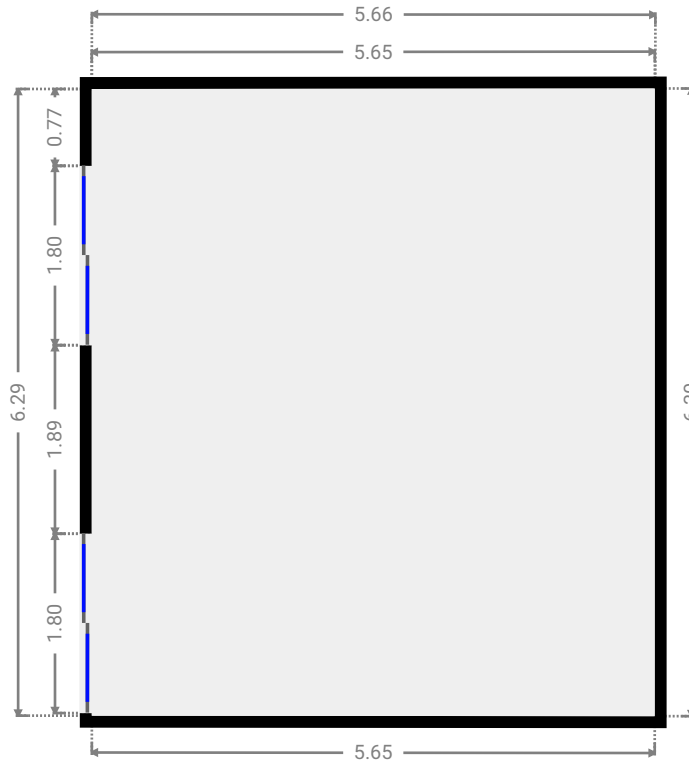
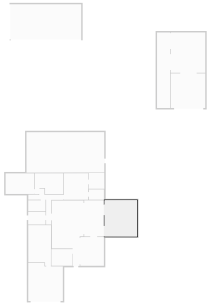
▼ Other
Ground Floor

WIDTH: 13.50 m • LENGTH: 7.01 m
AREA: 94.59 m² • PERIMETER: 41.01 m



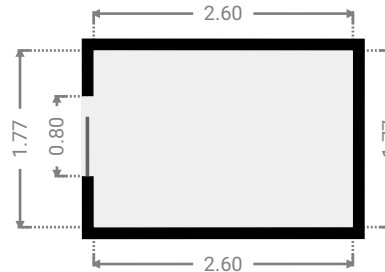
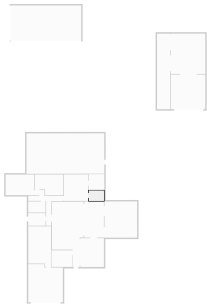
▼ **Other**
Ground Floor

WIDTH: 5.66 m • LENGTH: 6.30 m
AREA: 35.57 m² • PERIMETER: 23.89 m



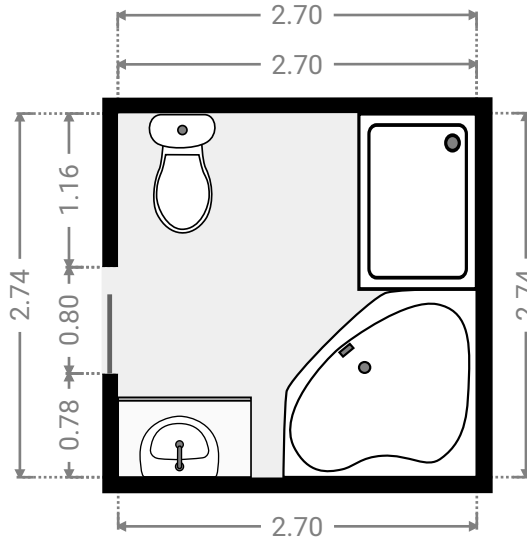
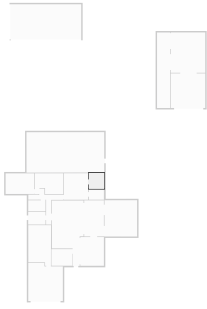
▼ **Closet**
Ground Floor

WIDTH: 2.60 m • LENGTH: 1.77 m
AREA: 4.61 m² • PERIMETER: 8.75 m



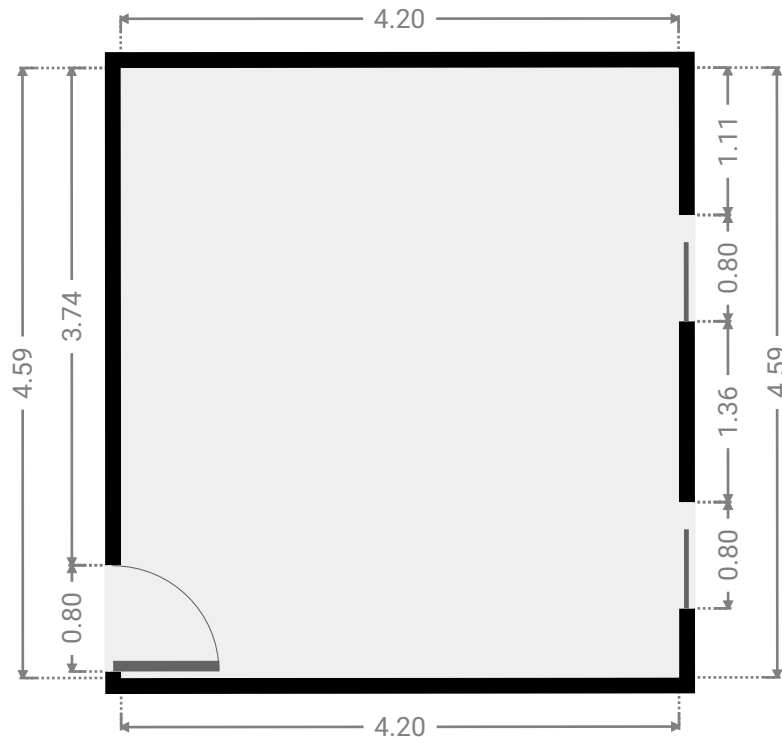
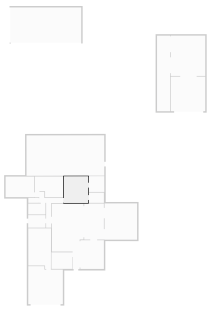
▼ Bathroom
Ground Floor

WIDTH: 2.70 m • LENGTH: 2.74 m
AREA: 7.39 m² • PERIMETER: 10.88 m



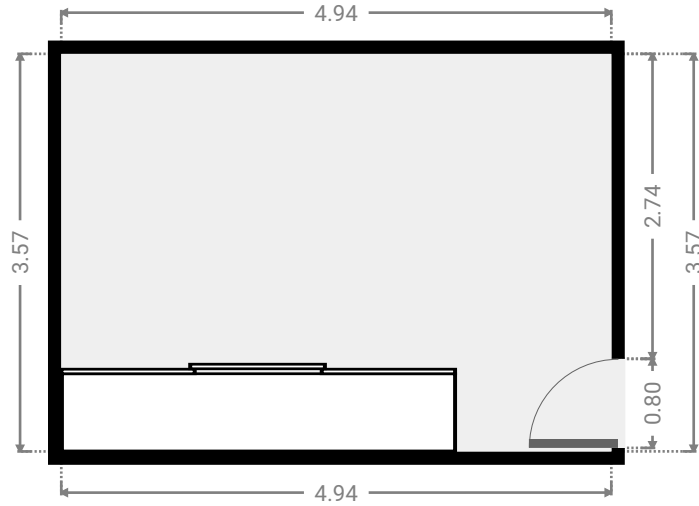
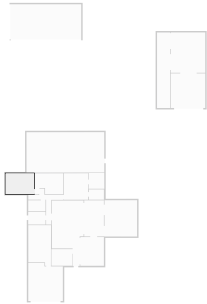
▼ Master Bedroom
Ground Floor

WIDTH: 4.20 m • LENGTH: 4.59 m
AREA: 19.28 m² • PERIMETER: 17.58 m



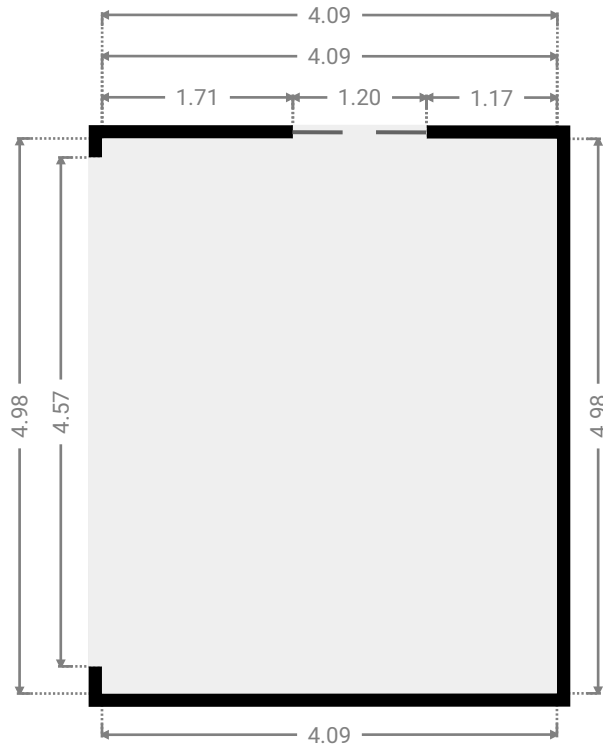
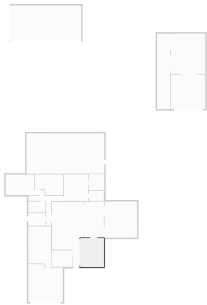
▼ **Bedroom**
Ground Floor

WIDTH: 4.94 m • LENGTH: 3.57 m
AREA: 17.64 m² • PERIMETER: 17.02 m



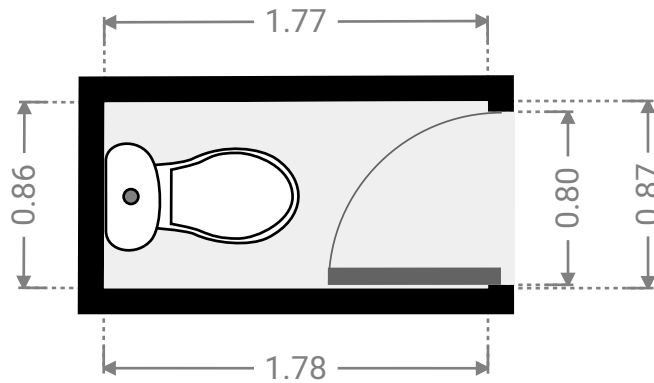
▼ **Living Room**
Ground Floor

WIDTH: 4.09 m • LENGTH: 4.98 m
AREA: 20.36 m² • PERIMETER: 18.14 m



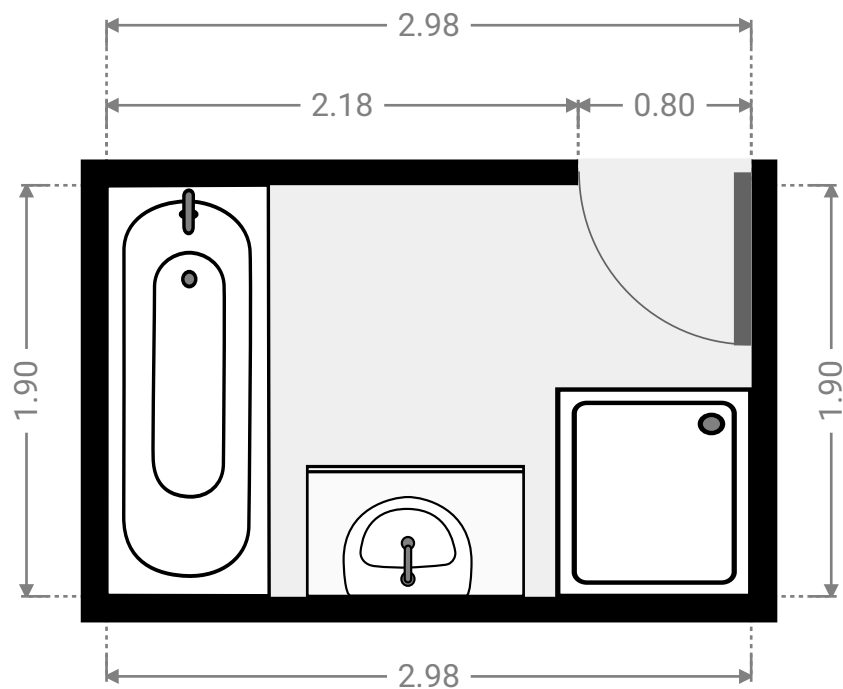
▼ **Toilet**
Ground Floor

WIDTH: 1.78 m • LENGTH: 0.87 m
AREA: 1.53 m² • PERIMETER: 5.27 m



▼ **Bathroom**
Ground Floor

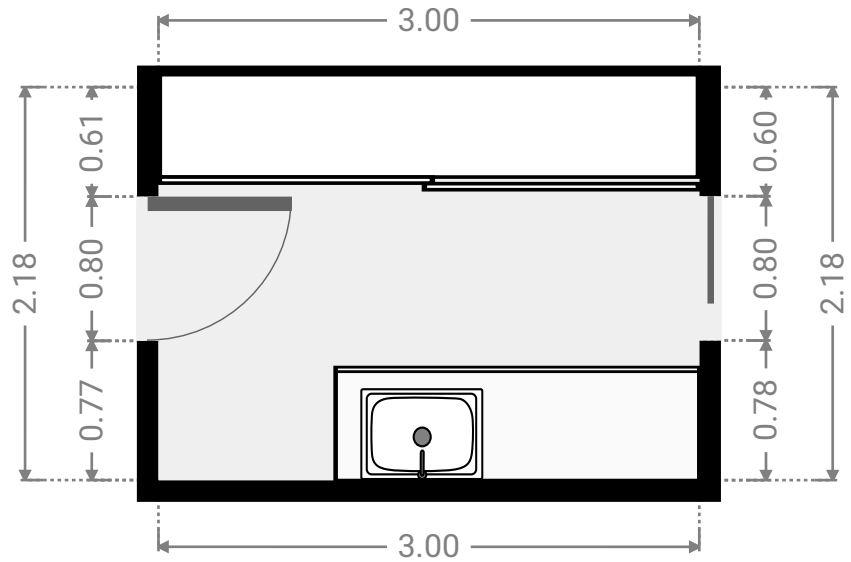
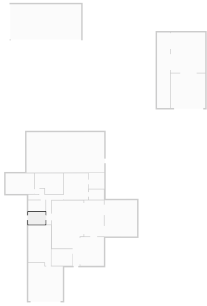
WIDTH: 2.98 m • LENGTH: 1.90 m
AREA: 5.66 m² • PERIMETER: 9.76 m



FLOORS: 1

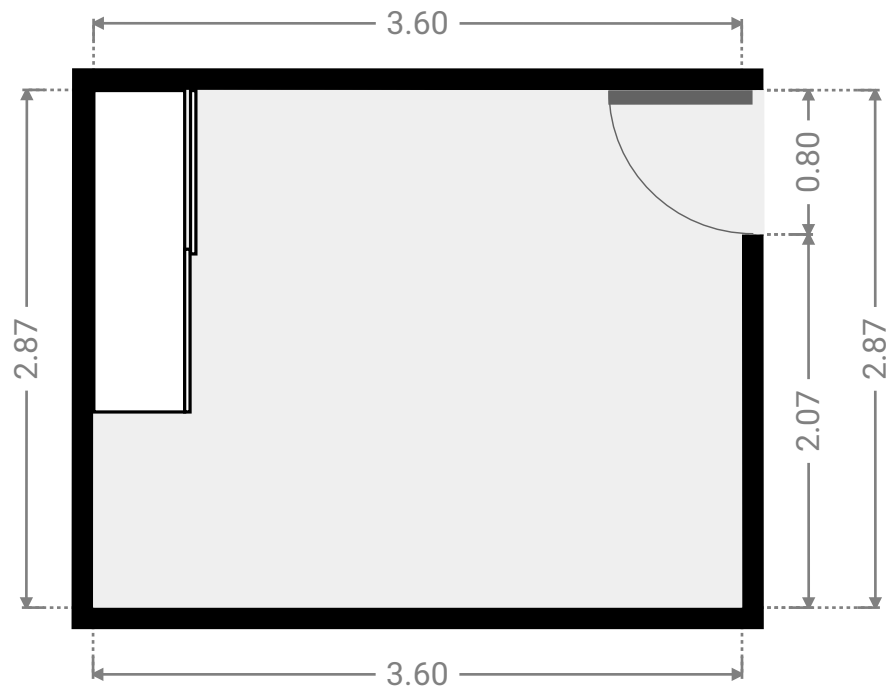
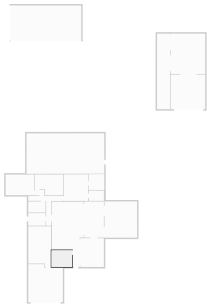
▼ Laundry Room
Ground Floor

WIDTH: 3.00 m • LENGTH: 2.18 m
AREA: 6.54 m² • PERIMETER: 10.36 m



▼ Bedroom
Ground Floor

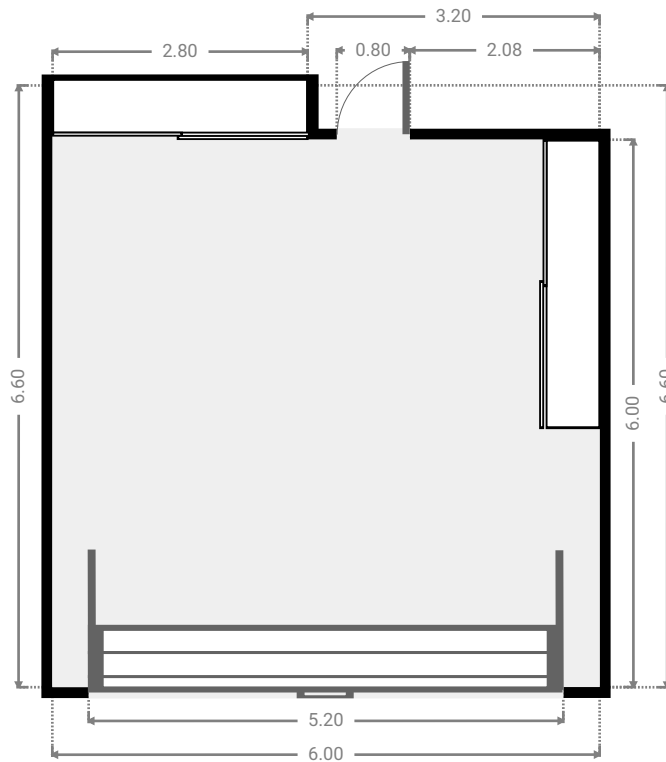
WIDTH: 3.60 m • LENGTH: 2.87 m
AREA: 10.33 m² • PERIMETER: 12.94 m



FLOORS: 1

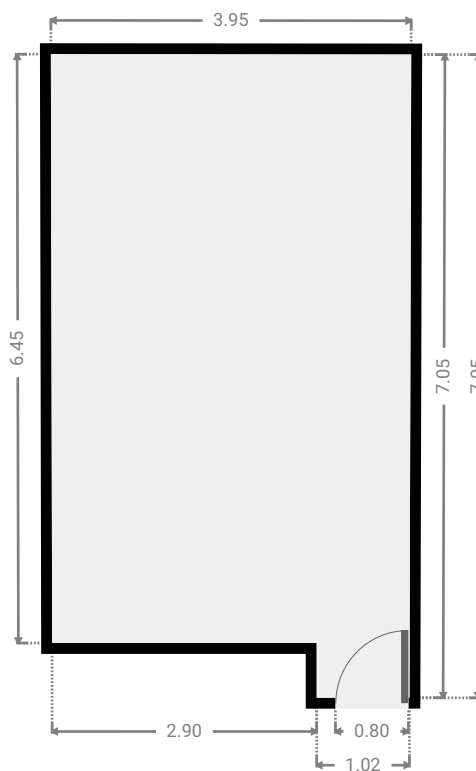
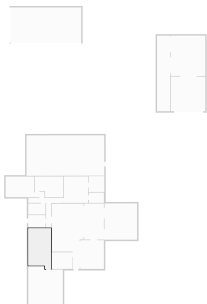
▼ **Garage**
Ground Floor

WIDTH: 6.00 m • LENGTH: 6.60 m
AREA: 37.66 m² • PERIMETER: 25.19 m



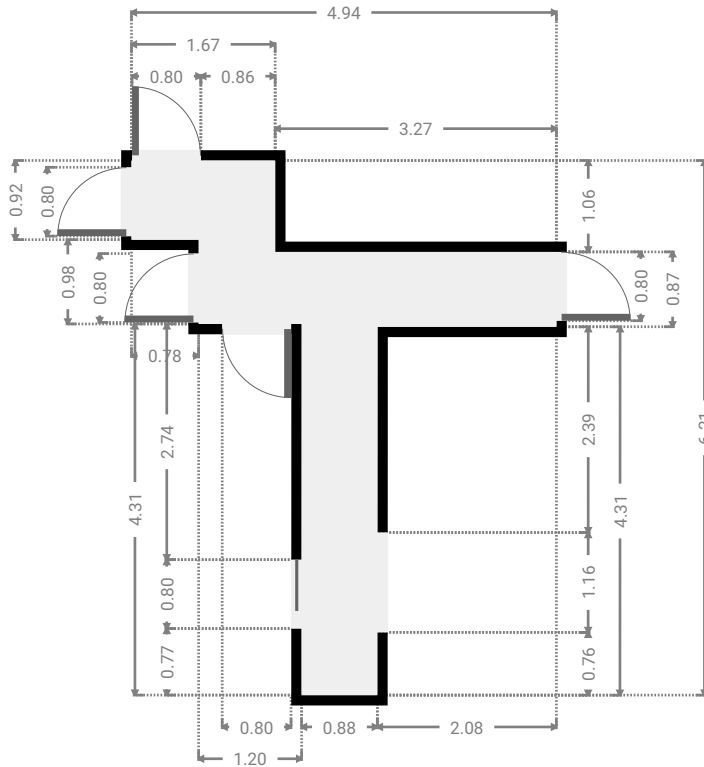
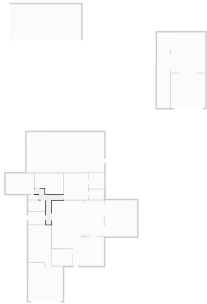
▼ **Living Room**
Ground Floor

WIDTH: 3.95 m • LENGTH: 7.05 m
AREA: 25.99 m² • PERIMETER: 21.97 m



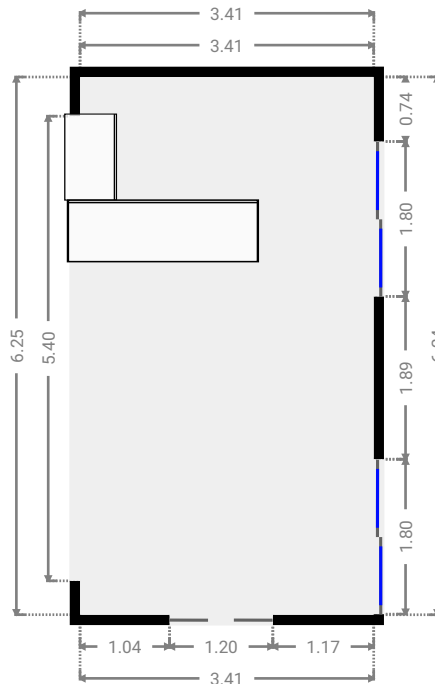
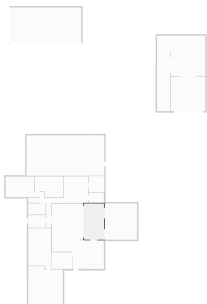
▼ **Hall**
Ground Floor

WIDTH: 4.94 m • LENGTH: 6.21 m
AREA: 9.01 m² • PERIMETER: 22.30 m



▼ **Dining Room**
Ground Floor

WIDTH: 3.41 m • LENGTH: 6.25 m
AREA: 21.33 m² • PERIMETER: 19.33 m



▼ Kitchen Ground Floor

WIDTH: 5.50 m • LENGTH: 11.35 m
AREA: 47.95 m² • PERIMETER: 33.69 m

