

36 Joseph Street

SUBMITTED BY

Ray White Rockhampton Casey
stockers@cqoz.com

CREATED ON

2022-06-15

Floors

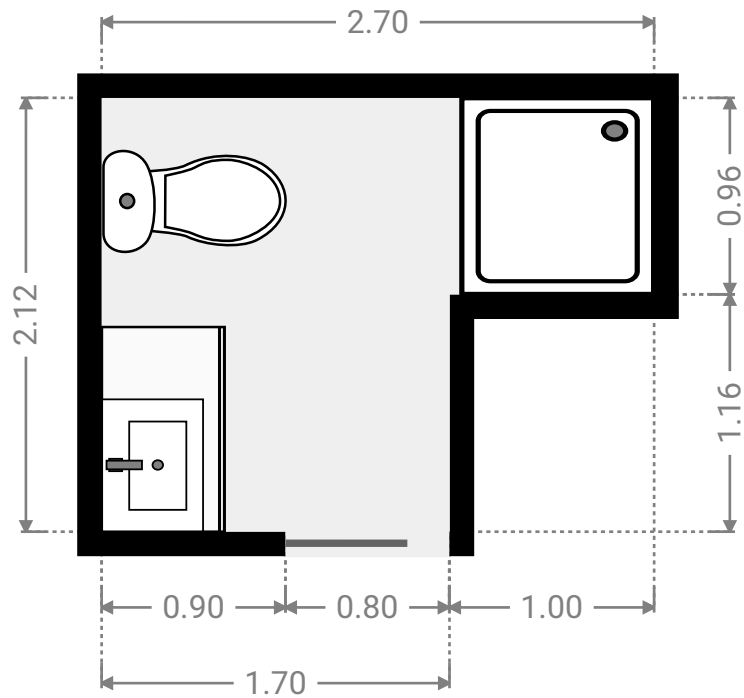
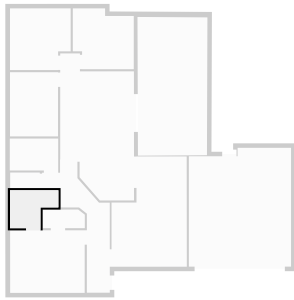
1

▼ Ground Floor



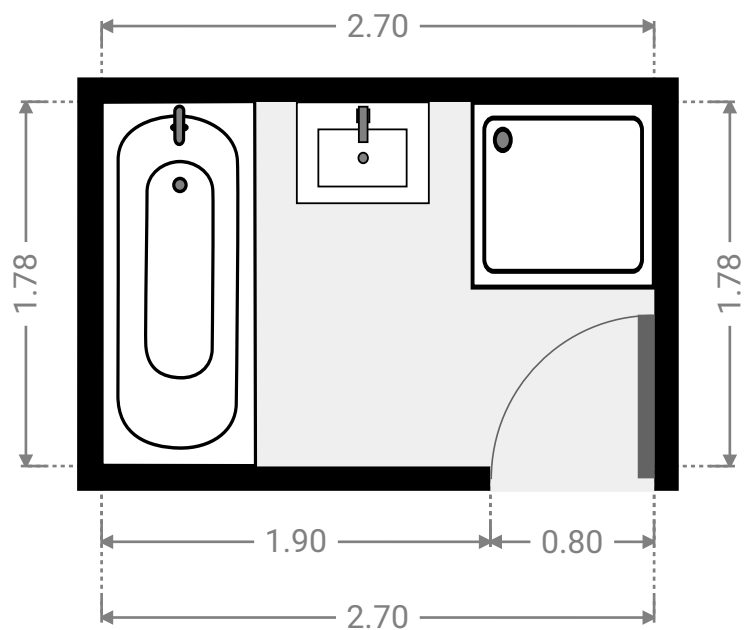
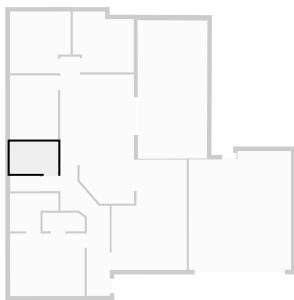
▼ **Bathroom**
Ground Floor

WIDTH: 2.70 m • LENGTH: 2.12 m
AREA: 4.56 m² • PERIMETER: 9.64 m



▼ **Bathroom**
Ground Floor

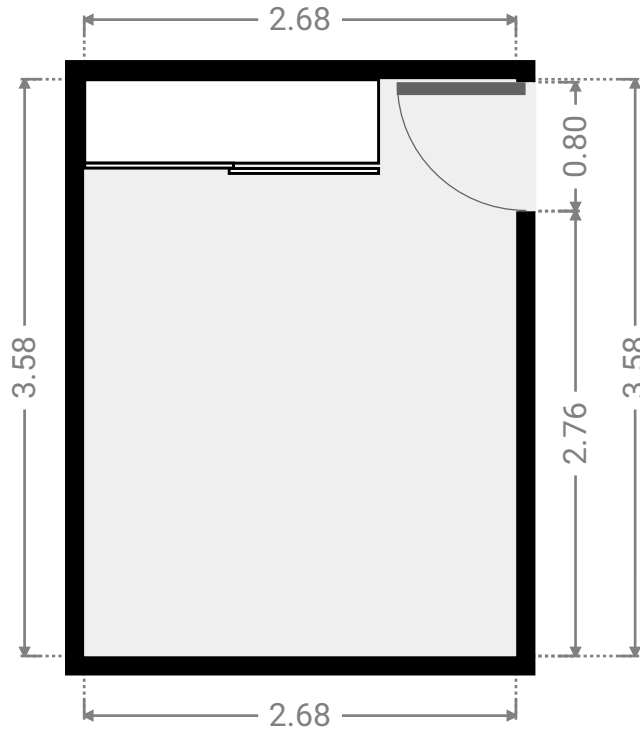
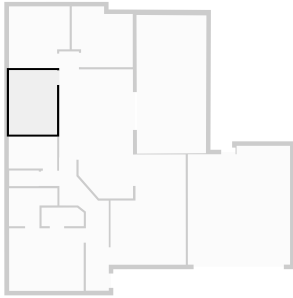
WIDTH: 2.70 m • LENGTH: 1.78 m
AREA: 4.81 m² • PERIMETER: 8.96 m



FLOORS: 1

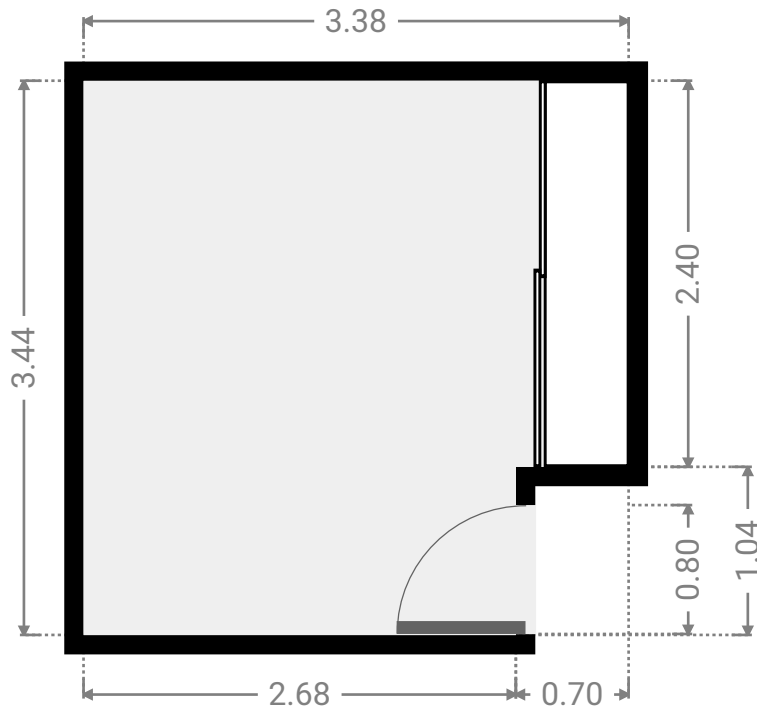
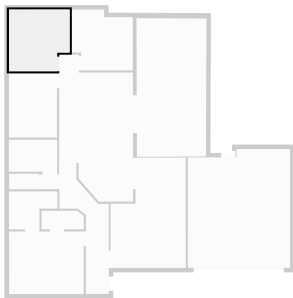
▼ **Bedroom**
Ground Floor

WIDTH: 2.68 m • LENGTH: 3.58 m
AREA: 9.59 m² • PERIMETER: 12.52 m



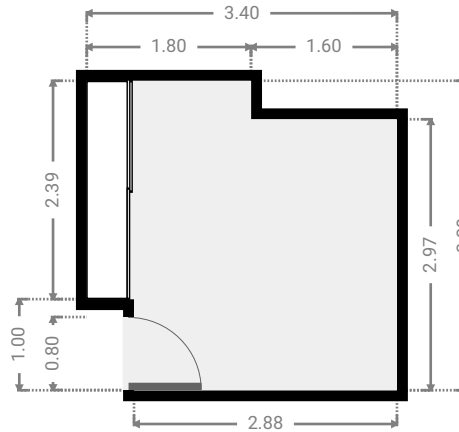
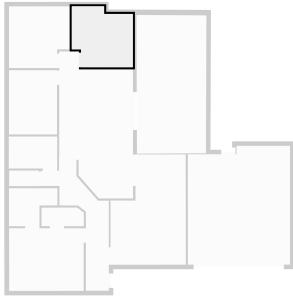
▼ **Bedroom**
Ground Floor

WIDTH: 3.38 m • LENGTH: 3.44 m
AREA: 10.91 m² • PERIMETER: 13.65 m



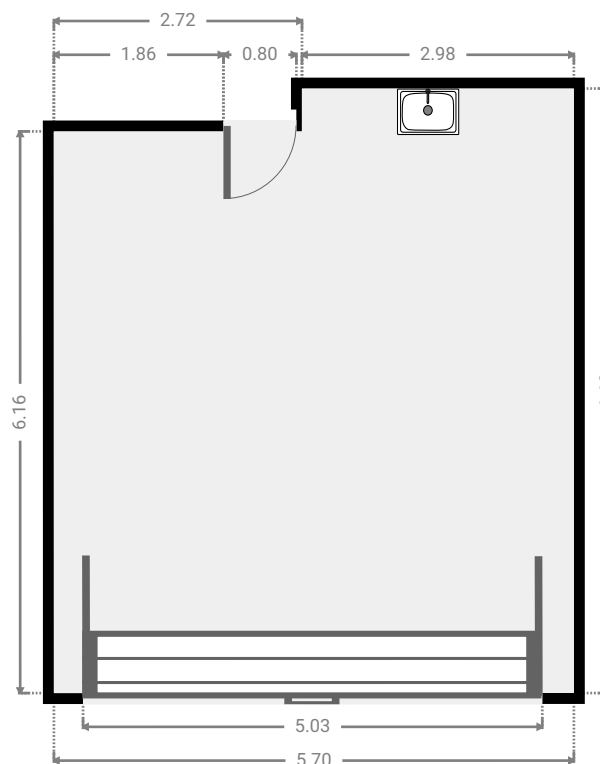
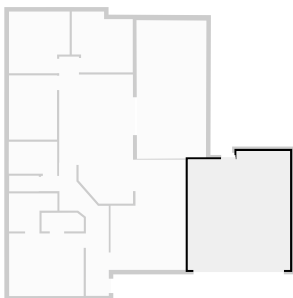
▼ **Bedroom**
Ground Floor

WIDTH: 3.40 m • LENGTH: 3.39 m
AREA: 10.34 m² • PERIMETER: 13.58 m



▼ **Garage**
Ground Floor

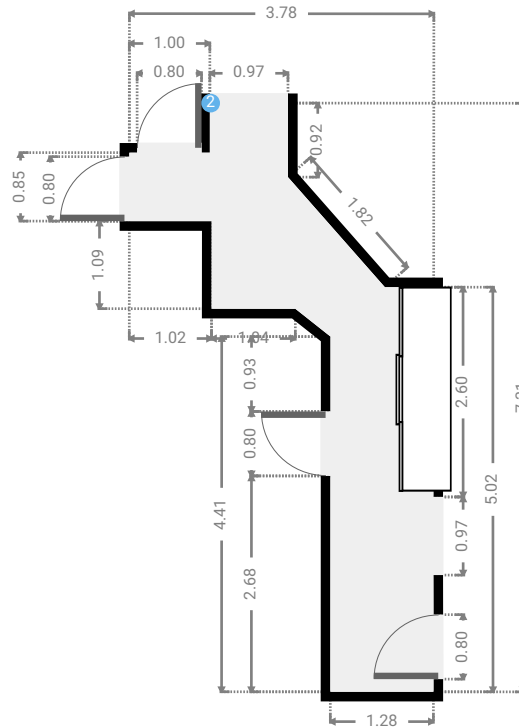
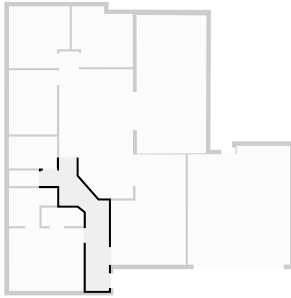
WIDTH: 5.70 m • LENGTH: 6.63 m
AREA: 36.50 m² • PERIMETER: 24.65 m



FLOORS: 1

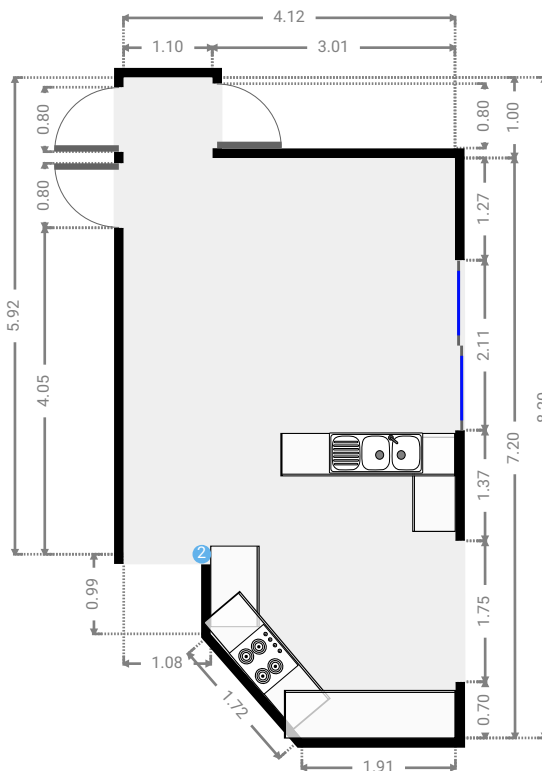
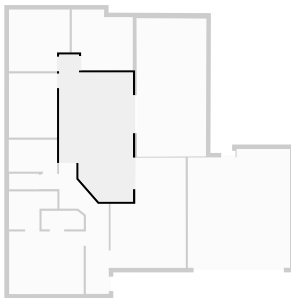
▼ **Hall**
Ground Floor

WIDTH: 3.78 m • LENGTH: 7.31 m
AREA: 10.76 m² • PERIMETER: 21.19 m



▼ **Kitchen**
Ground Floor

WIDTH: 4.12 m • LENGTH: 8.20 m
AREA: 27.53 m² • PERIMETER: 23.92 m



▼ **Kitchen**/Ground Floor

2 **OPENING**

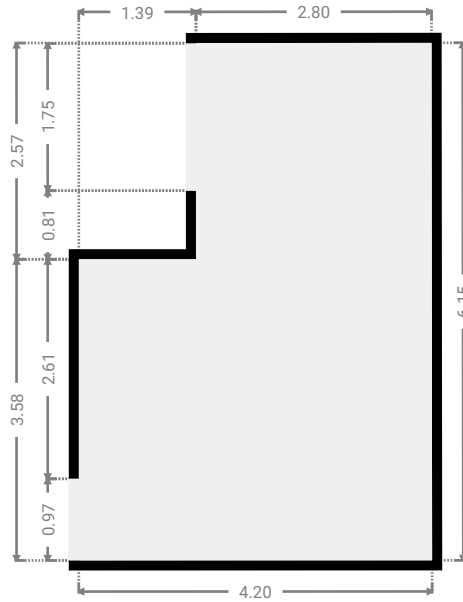
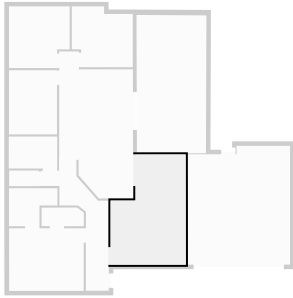
Height
0.00 m



FLOORS: 1

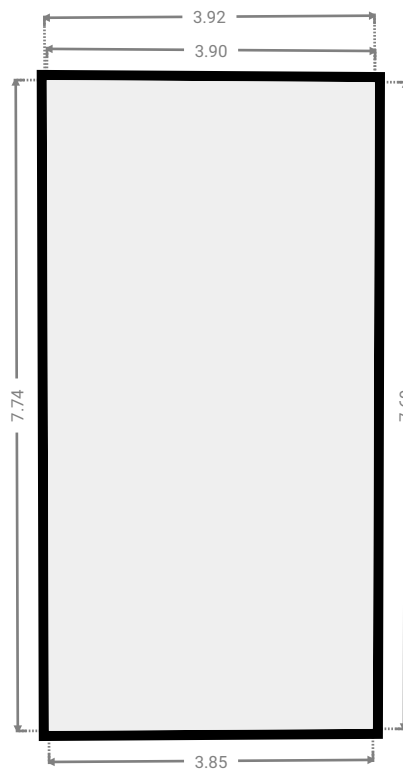
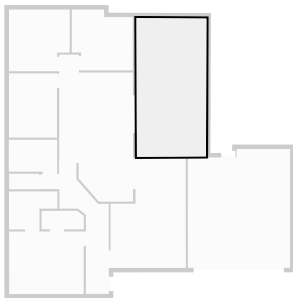
▼ **Living Room**
Ground Floor

WIDTH: 4.20 m • LENGTH: 6.15 m
AREA: 22.23 m² • PERIMETER: 20.69 m



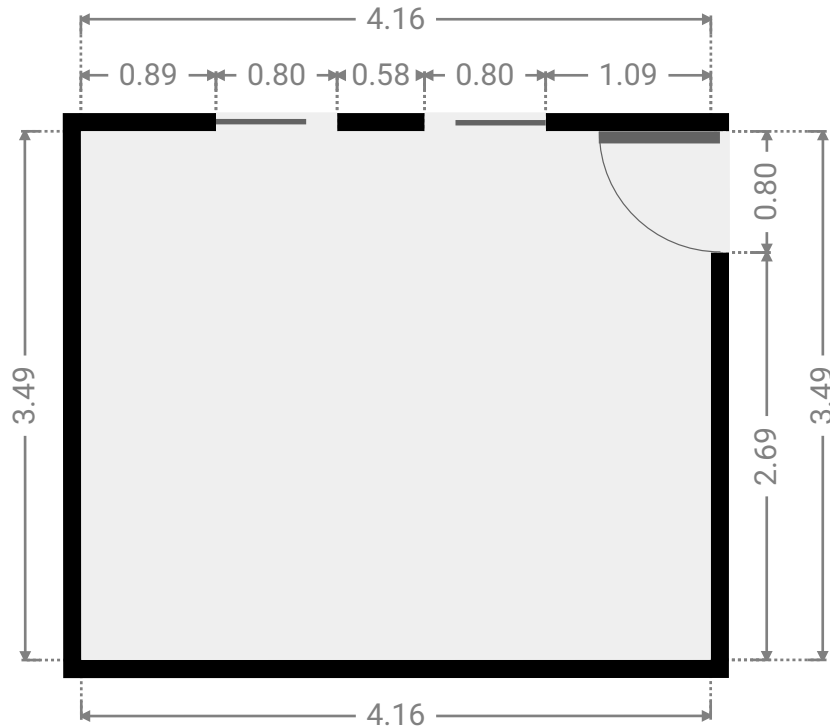
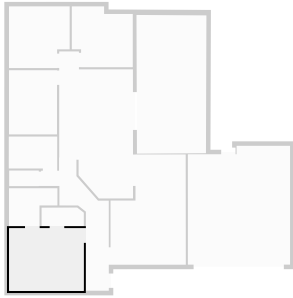
▼ **Other**
Ground Floor

WIDTH: 3.92 m • LENGTH: 7.74 m
AREA: 29.88 m² • PERIMETER: 23.17 m



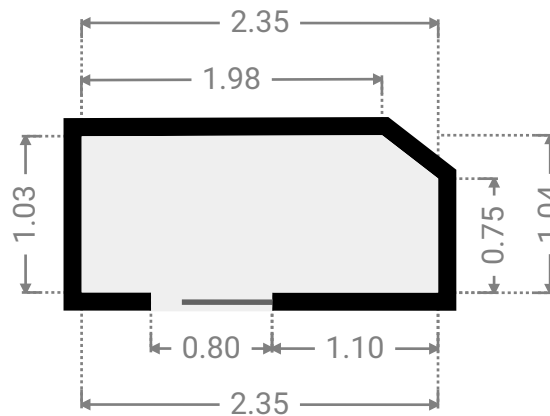
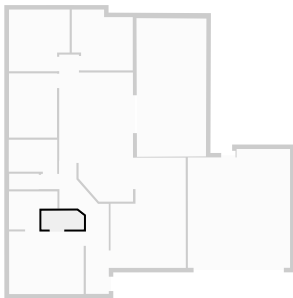
▼ **Primary Bedroom**
Ground Floor

WIDTH: 4.16 m • LENGTH: 3.49 m
AREA: 14.52 m² • PERIMETER: 15.30 m



▼ **Closet**
Ground Floor

WIDTH: 2.35 m • LENGTH: 1.04 m
AREA: 2.39 m² • PERIMETER: 6.59 m



▼ Toilet
Ground Floor

WIDTH: 1.65 m • LENGTH: 0.87 m
AREA: 1.44 m² • PERIMETER: 5.04 m

