

36 Govind Court

SUBMITTED BY

Ray White Rockhampton Casey
stockers@cqoz.com

CREATED ON

2022-06-20

Floors

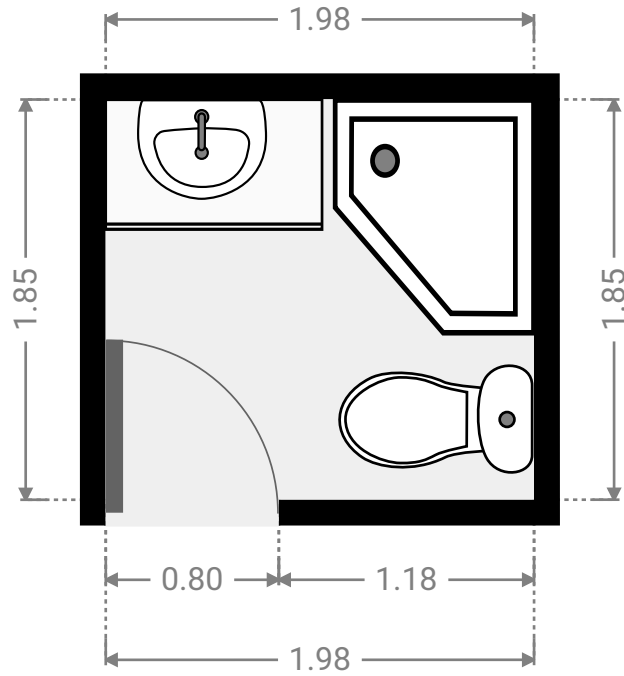
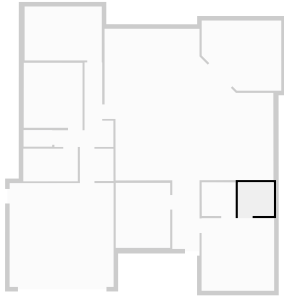
1

▼ Ground Floor



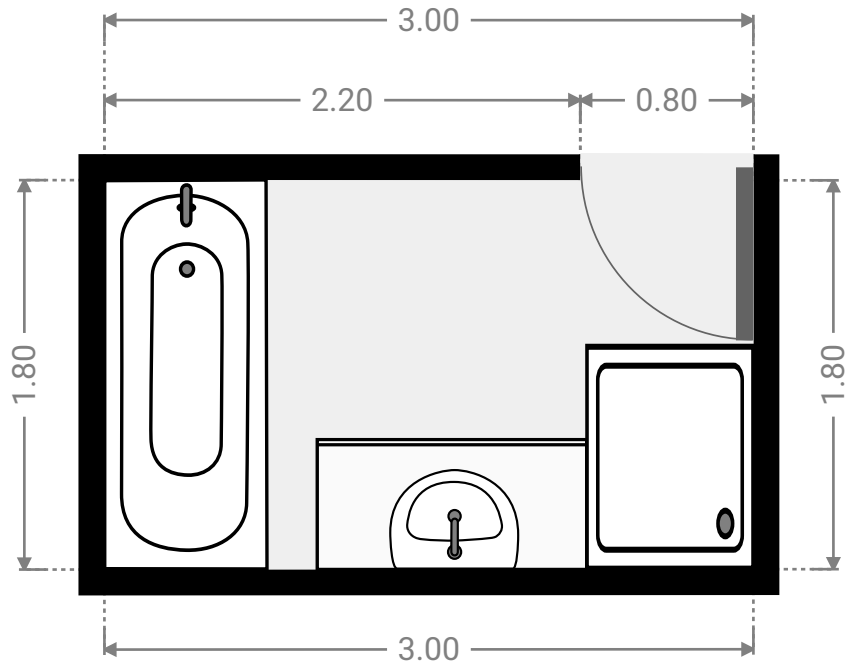
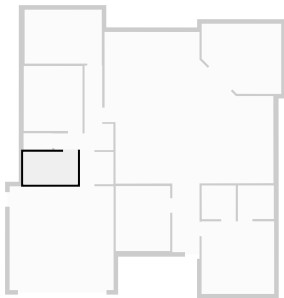
▼ **Bathroom**
Ground Floor

WIDTH: 1.98 m • LENGTH: 1.85 m
AREA: 3.66 m² • PERIMETER: 7.66 m



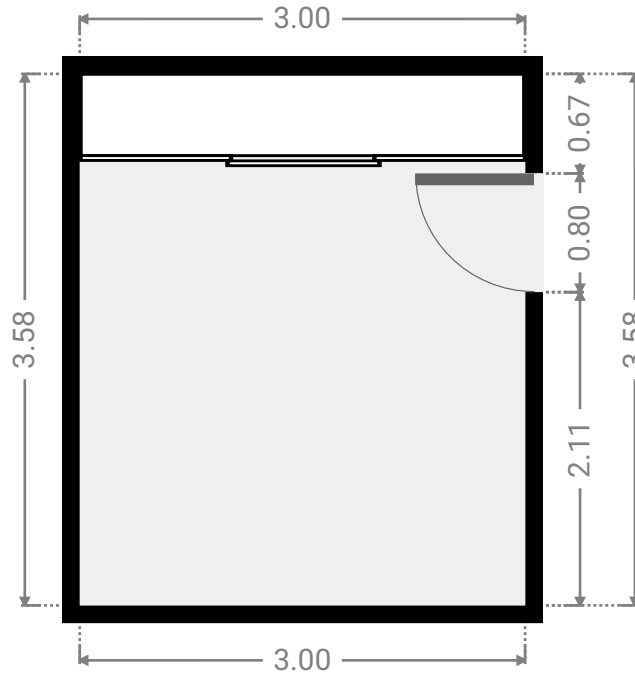
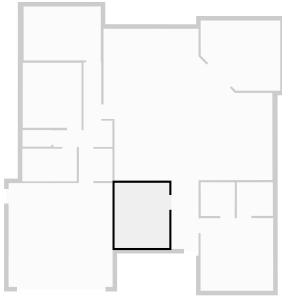
▼ **Bathroom**
Ground Floor

WIDTH: 3.00 m • LENGTH: 1.80 m
AREA: 5.40 m² • PERIMETER: 9.60 m



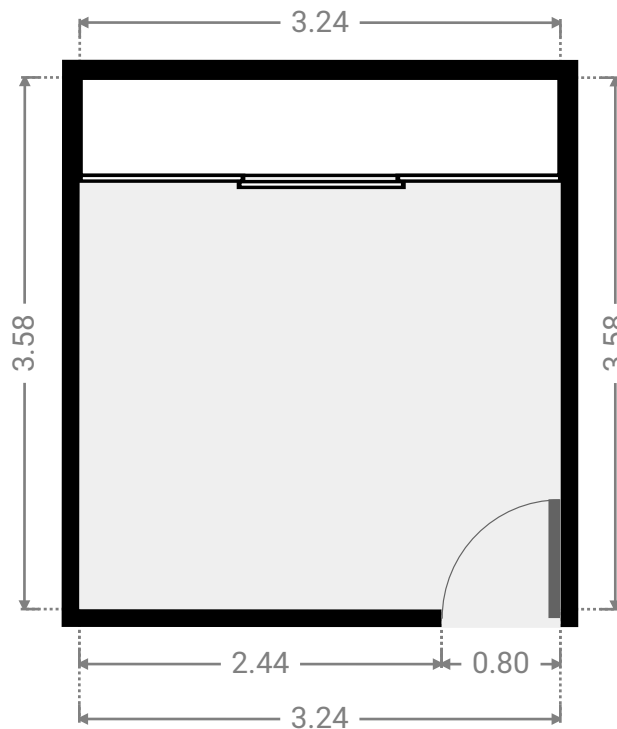
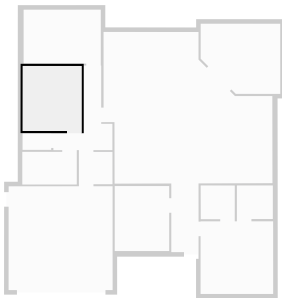
▼ **Bedroom**
Ground Floor

WIDTH: 3.00 m • LENGTH: 3.58 m
AREA: 10.74 m² • PERIMETER: 13.16 m



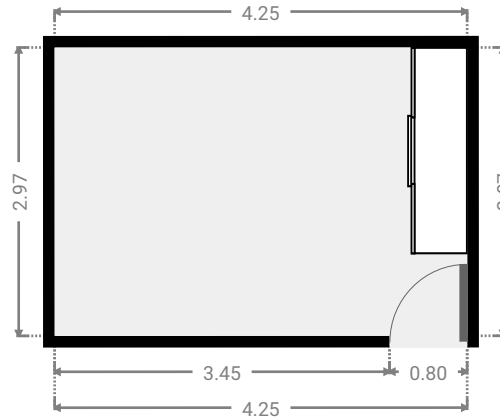
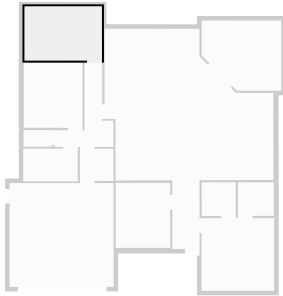
▼ **Bedroom**
Ground Floor

WIDTH: 3.24 m • LENGTH: 3.58 m
AREA: 11.60 m² • PERIMETER: 13.64 m



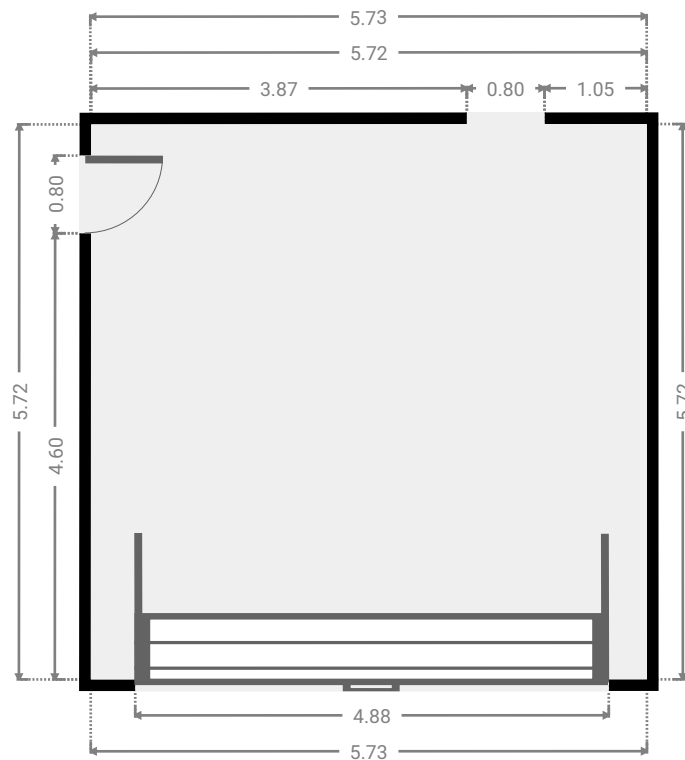
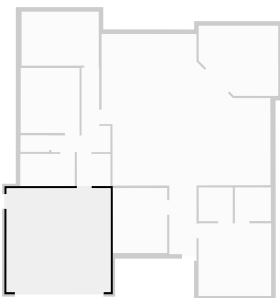
▼ Bedroom Ground Floor

WIDTH: 4.25 m • LENGTH: 2.97 m
AREA: 12.62 m² • PERIMETER: 14.44 m



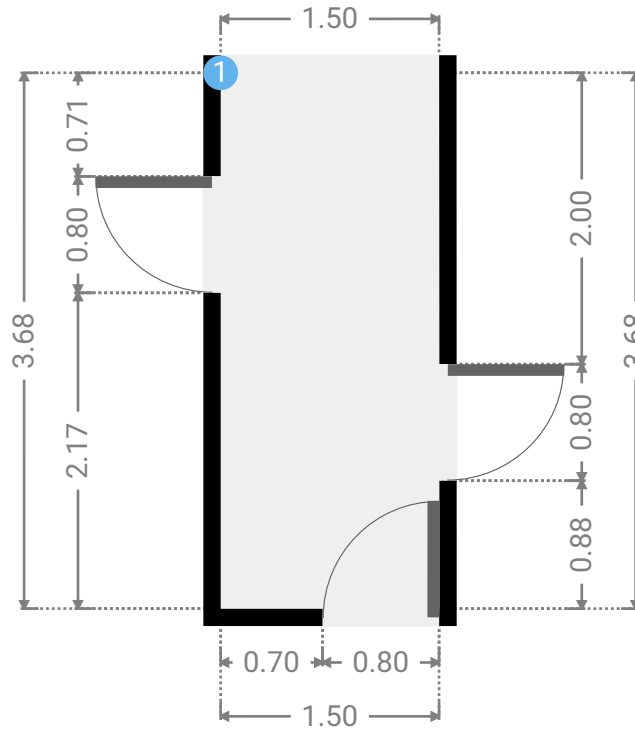
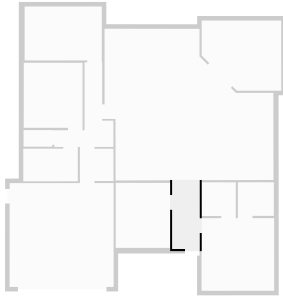
▼ Garage Ground Floor

WIDTH: 5.73 m • LENGTH: 5.72 m
AREA: 32.75 m² • PERIMETER: 22.89 m



▼ Hall Ground Floor

WIDTH: 1.50 m • LENGTH: 3.68 m
AREA: 5.52 m² • PERIMETER: 10.36 m



▼ Hall/Ground Floor

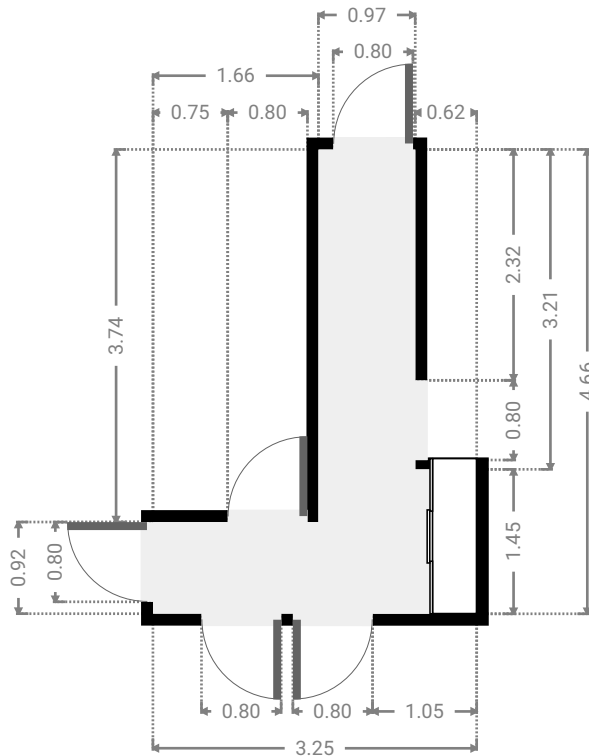
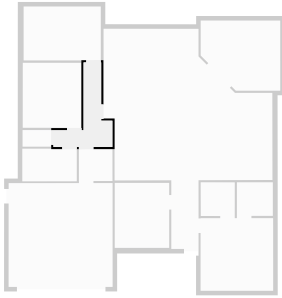
1 OPENING

Height
0.00 m



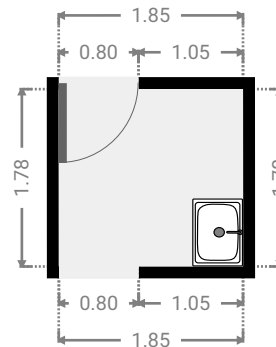
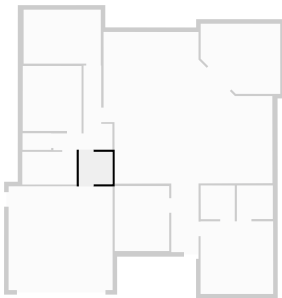
▼ Hall
Ground Floor

WIDTH: 3.25 m • LENGTH: 4.66 m
AREA: 6.95 m² • PERIMETER: 15.82 m



▼ Laundry Room
Ground Floor

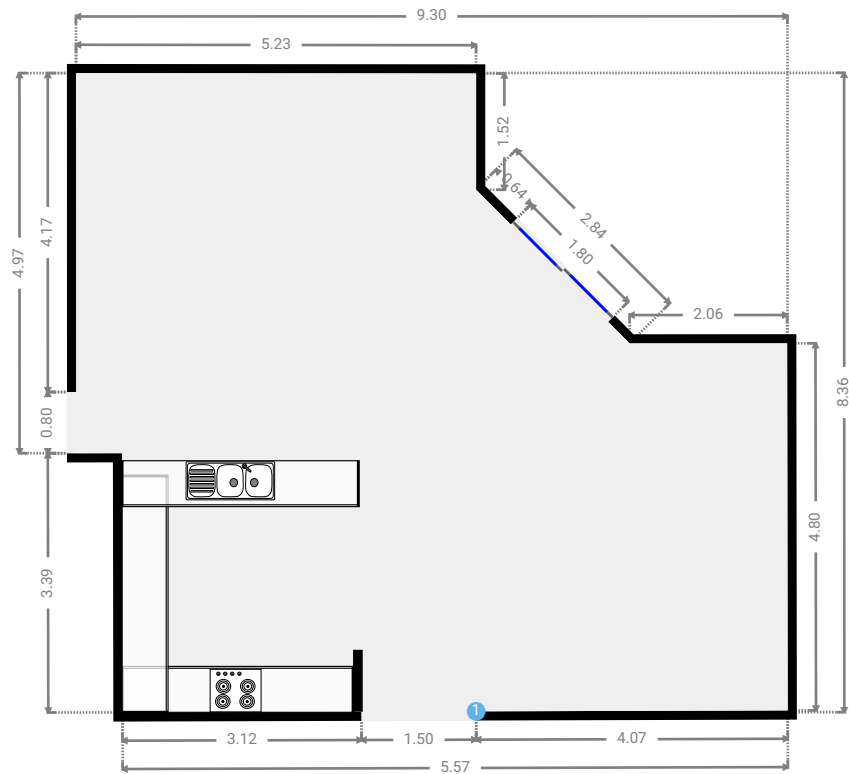
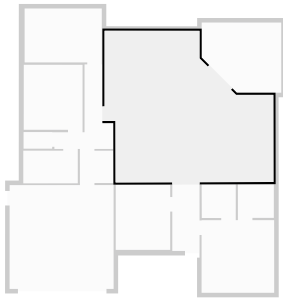
WIDTH: 1.85 m • LENGTH: 1.78 m
AREA: 3.29 m² • PERIMETER: 7.26 m



FLOORS: 1

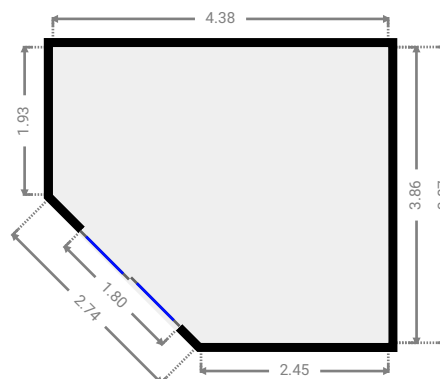
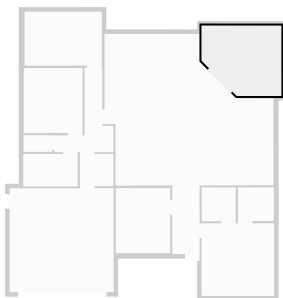
▼ Living Room Ground Floor

WIDTH: 9.30 m • LENGTH: 8.36 m
AREA: 63.21 m² • PERIMETER: 34.11 m



▼ Other Ground Floor

WIDTH: 4.38 m • LENGTH: 3.87 m
AREA: 15.06 m² • PERIMETER: 15.36 m



▼ Toilet Ground Floor

WIDTH: 1.58 m • LENGTH: 0.92 m
AREA: 1.44 m² • PERIMETER: 4.99 m

