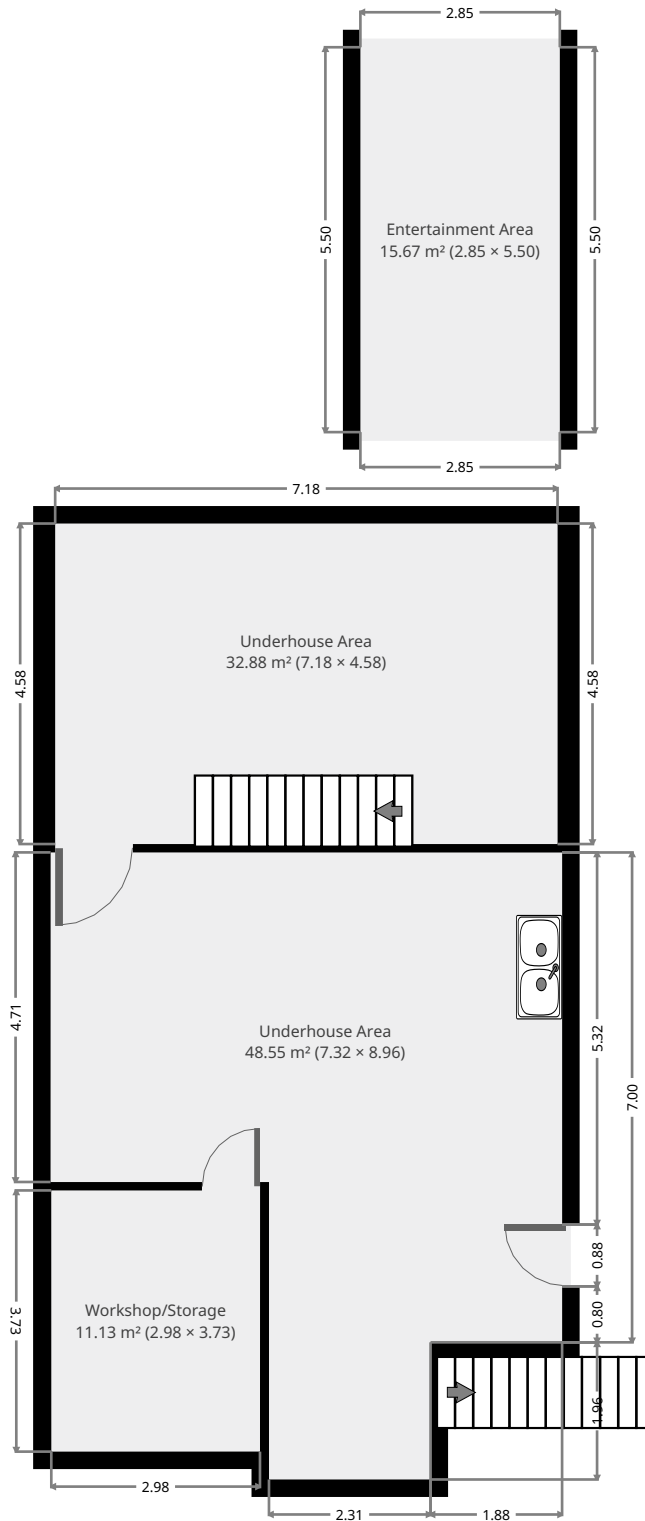


# 36 Foreman Street

## Ground Floor



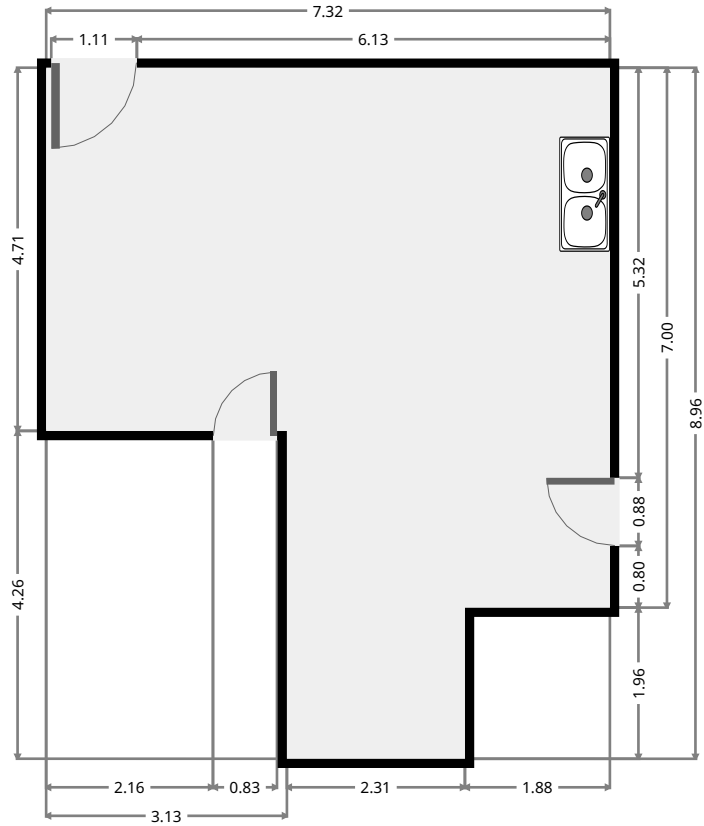
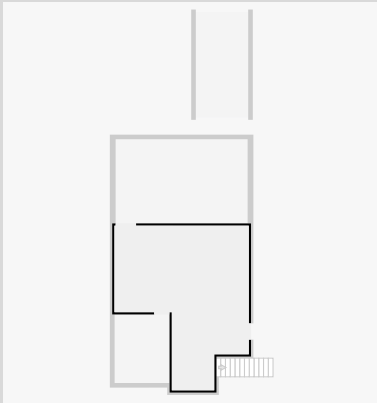
THIS FLOORPLAN IS PROVIDED WITHOUT WARRANTY OF ANY KIND. SENSOPIA DISCLAIMS ANY WARRANTY INCLUDING, WITHOUT LIMITATION, SATISFACTORY QUALITY OR ACCURACY OF DIMENSIONS.



# 36 Foreman Street

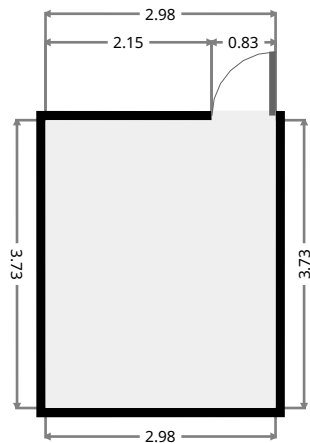
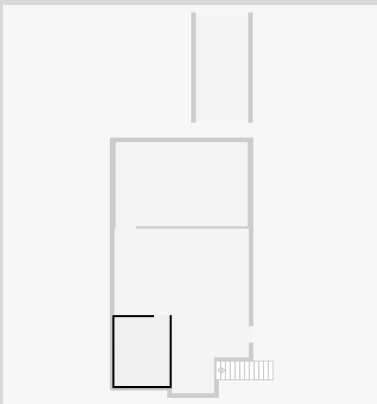
## Underhouse Area

Width: 7.32 m  
Length: 8.96 m  
Area: 48.55 m<sup>2</sup>  
Perimeter: 32.54 m



## Workshop/Storage

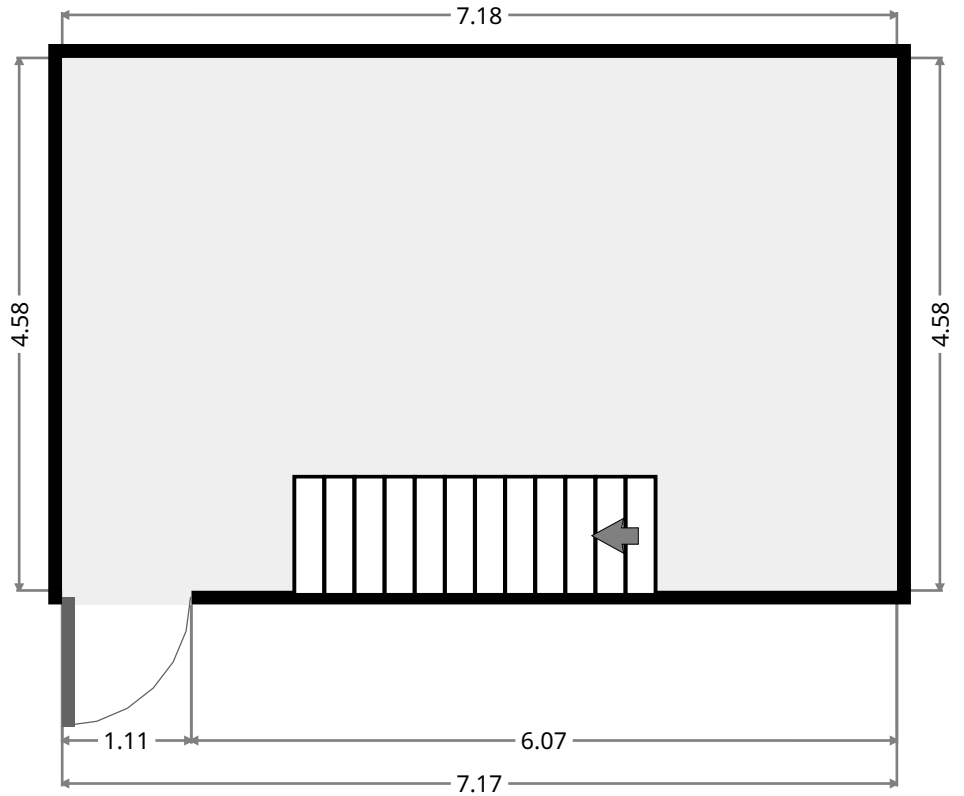
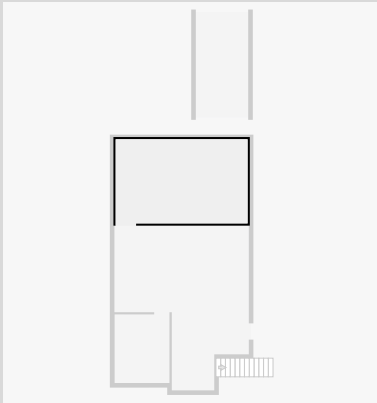
Width: 2.98 m  
Length: 3.73 m  
Area: 11.13 m<sup>2</sup>  
Perimeter: 13.43 m



# 36 Foreman Street

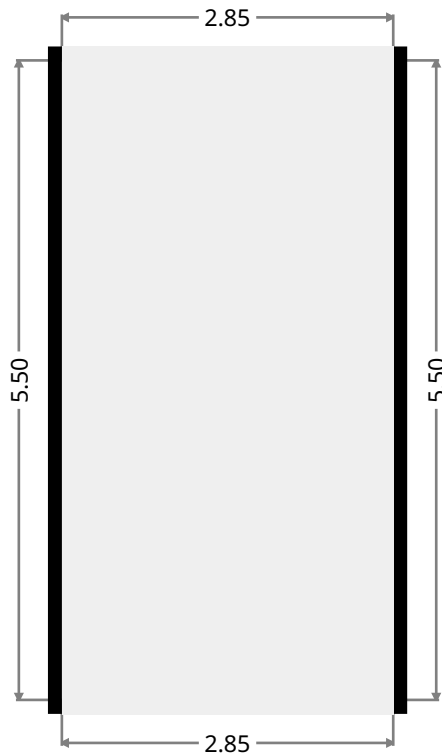
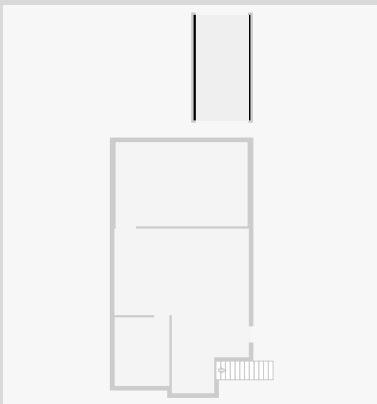
## Underhouse Area

Width: 4.58 m  
Length: 7.18 m  
Area: 32.88 m<sup>2</sup>  
Perimeter: 23.52 m



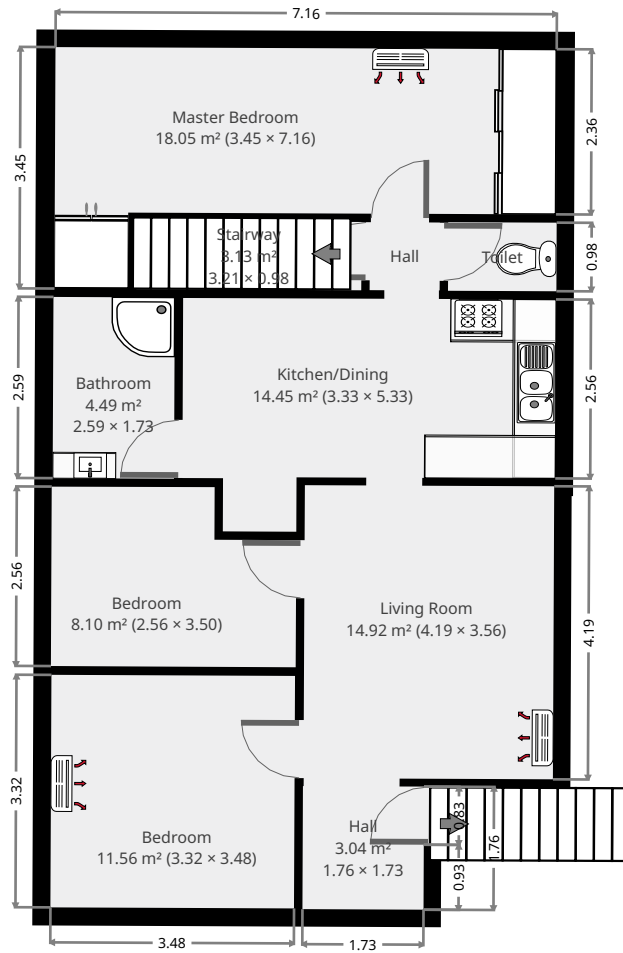
## Entertainment Area

Width: 2.85 m  
Length: 5.50 m  
Area: 15.67 m<sup>2</sup>  
Perimeter: 16.70 m



# 36 Foreman Street

## 1st Floor



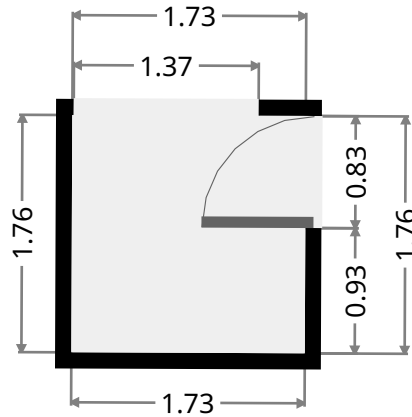
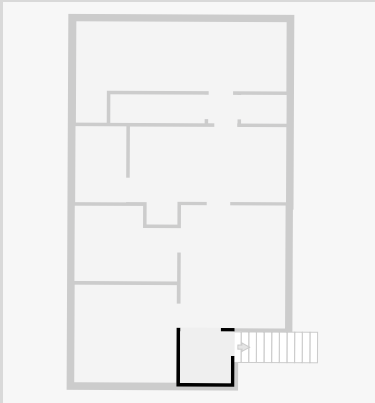
THIS FLOORPLAN IS PROVIDED WITHOUT WARRANTY OF ANY KIND. SENSOPIA DISCLAIMS ANY WARRANTY INCLUDING, WITHOUT LIMITATION, SATISFACTORY QUALITY OR ACCURACY OF DIMENSIONS.



# 36 Foreman Street

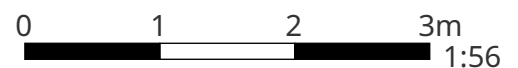
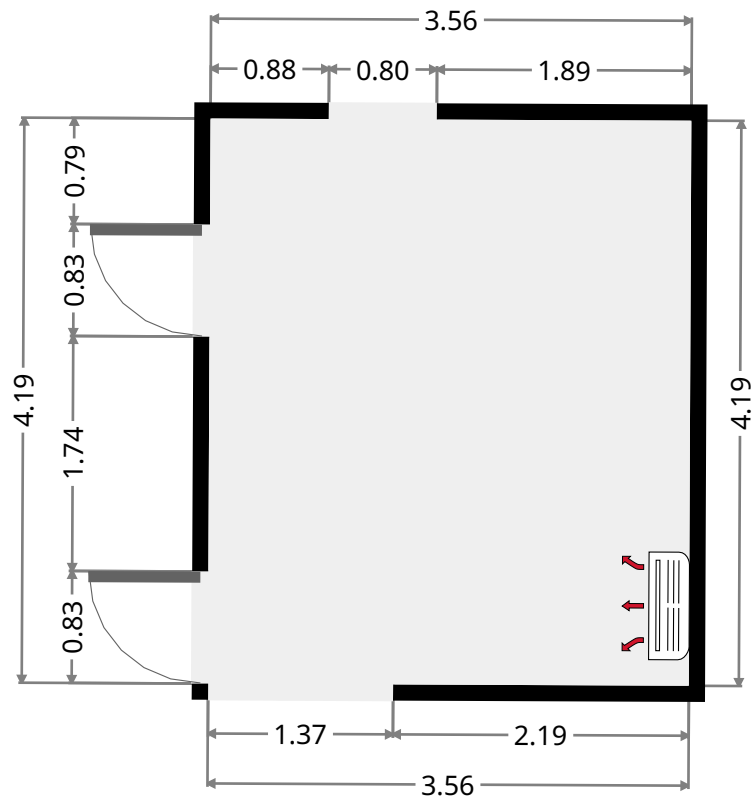
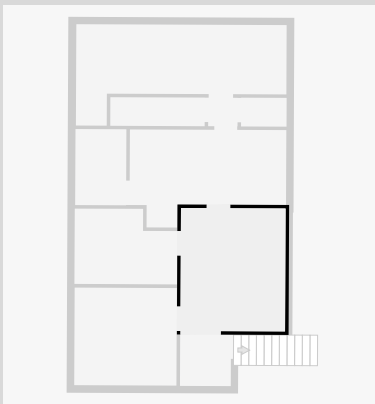
## Hall

Width: 1.73 m  
Length: 1.76 m  
Area: 3.04 m<sup>2</sup>  
Perimeter: 6.98 m



## Living Room

Width: 3.56 m  
Length: 4.19 m  
Area: 14.92 m<sup>2</sup>  
Perimeter: 15.50 m

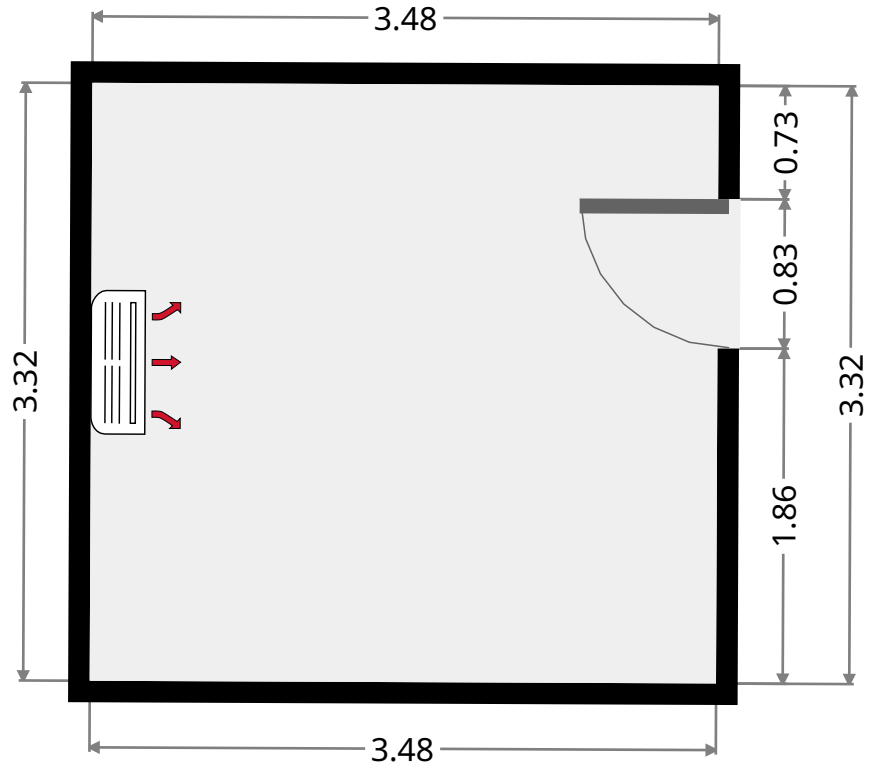
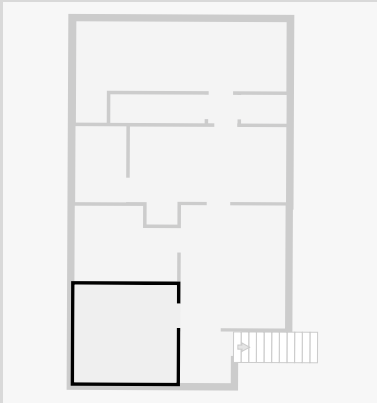


THIS FLOORPLAN IS PROVIDED WITHOUT WARRANTY OF ANY KIND. SENSOPIA DISCLAIMS ANY WARRANTY INCLUDING, WITHOUT LIMITATION, SATISFACTORY QUALITY OR ACCURACY OF DIMENSIONS.

# 36 Foreman Street

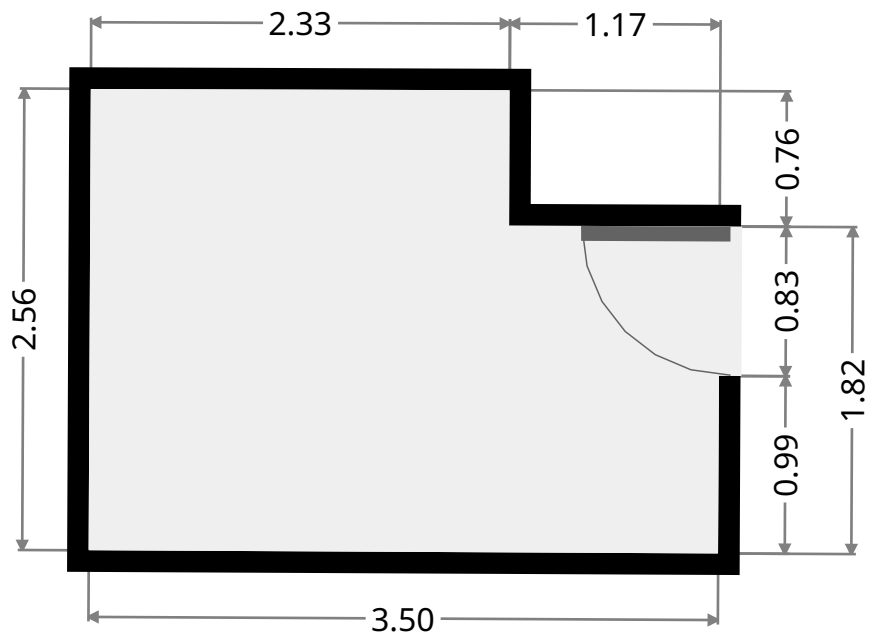
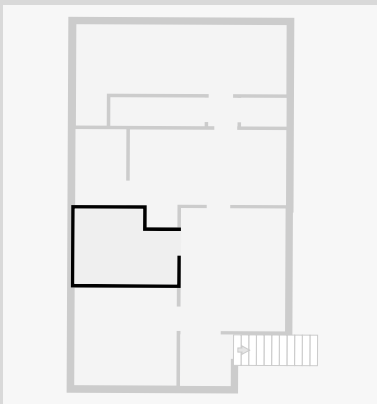
## Bedroom

Width: 3.32 m  
 Length: 3.48 m  
 Area: 11.56 m<sup>2</sup>  
 Perimeter: 13.61 m

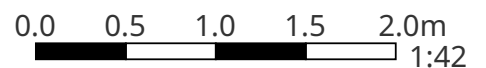


## Bedroom

Width: 2.56 m  
 Length: 3.50 m  
 Area: 8.10 m<sup>2</sup>  
 Perimeter: 12.13 m



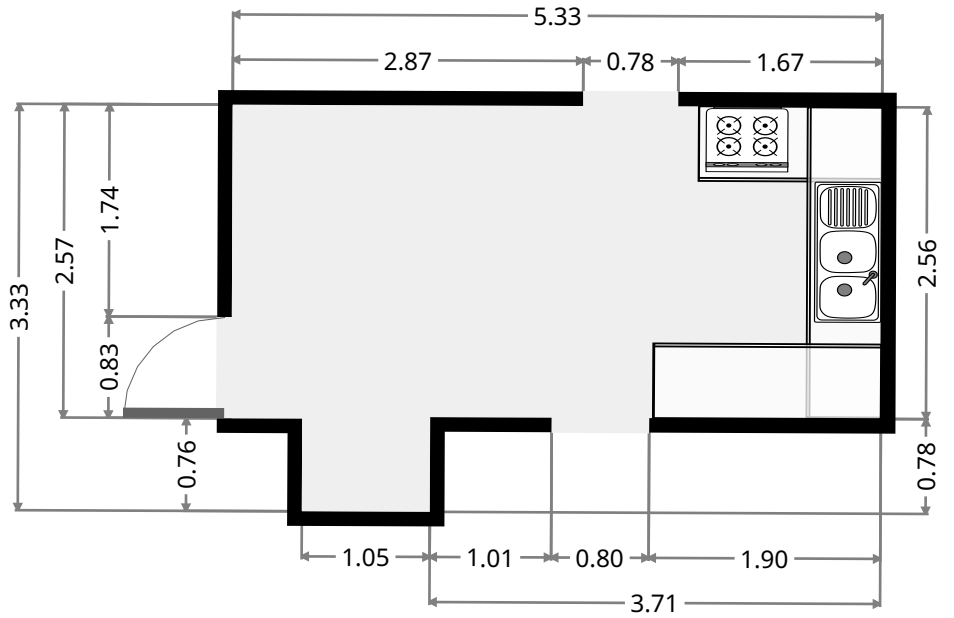
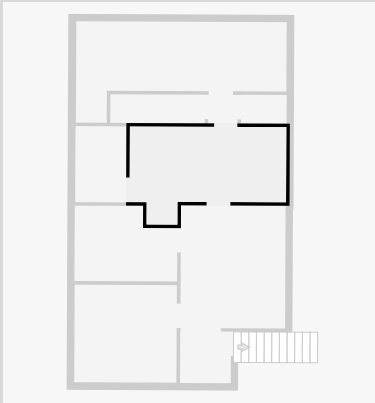
THIS FLOORPLAN IS PROVIDED WITHOUT WARRANTY OF ANY KIND. SENSOPIA DISCLAIMS ANY WARRANTY INCLUDING, WITHOUT LIMITATION, SATISFACTORY QUALITY OR ACCURACY OF DIMENSIONS.



# 36 Foreman Street

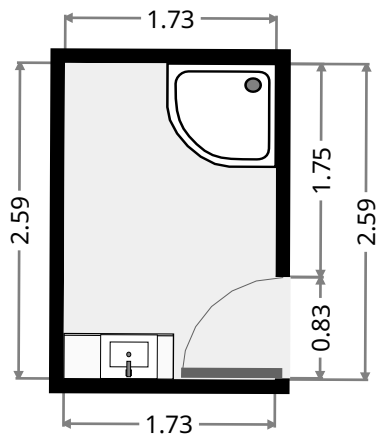
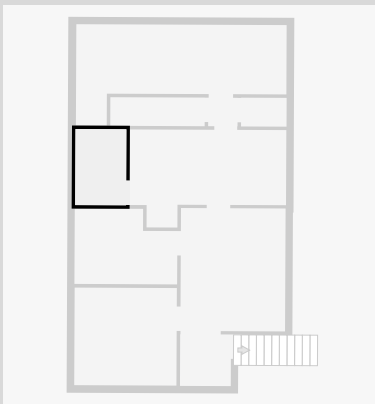
## Kitchen/Dining

Width: 3.33 m  
 Length: 5.33 m  
 Area: 14.45 m<sup>2</sup>  
 Perimeter: 17.33 m

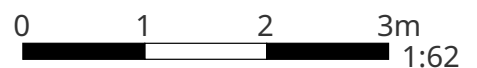


## Bathroom

Width: 1.73 m  
 Length: 2.59 m  
 Area: 4.49 m<sup>2</sup>  
 Perimeter: 8.65 m



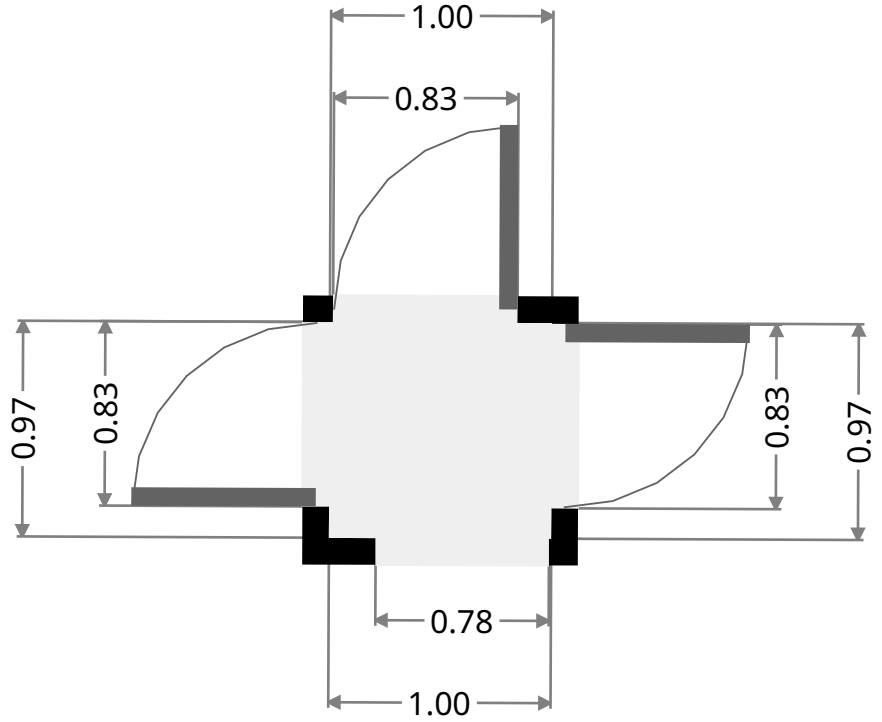
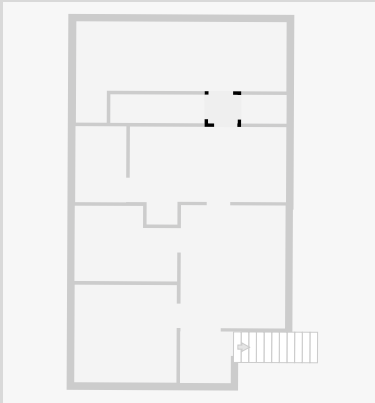
THIS FLOORPLAN IS PROVIDED WITHOUT WARRANTY OF ANY KIND. SENSOPIA DISCLAIMS ANY WARRANTY INCLUDING, WITHOUT LIMITATION, SATISFACTORY QUALITY OR ACCURACY OF DIMENSIONS.



# 36 Foreman Street

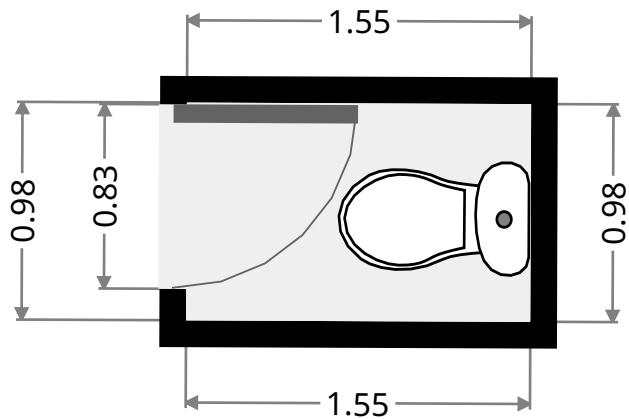
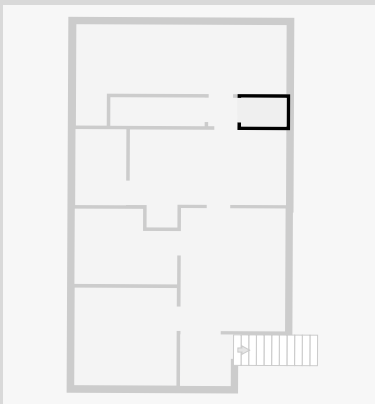
## Hall

Width: 0.97 m  
Length: 1.00 m  
Area: 0.97 m<sup>2</sup>  
Perimeter: 3.94 m



## Toilet

Width: 0.98 m  
Length: 1.55 m  
Area: 1.52 m<sup>2</sup>  
Perimeter: 5.06 m

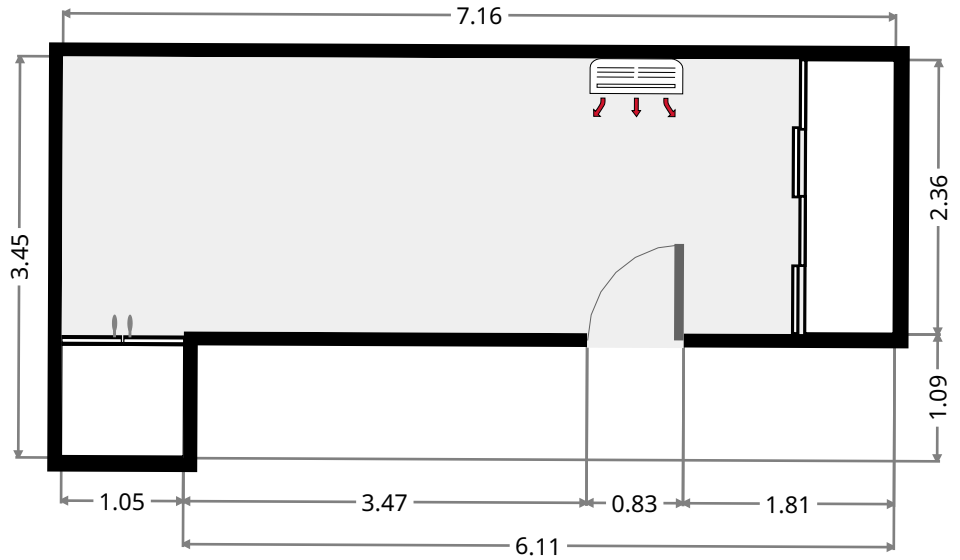
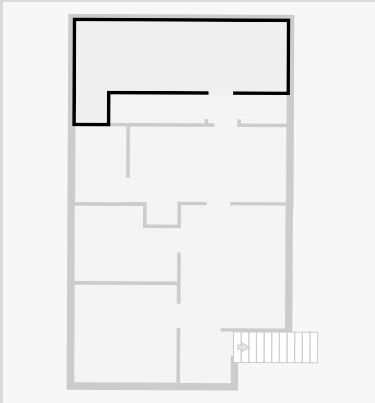




# 36 Foreman Street

## Master Bedroom

Width: 3.45 m  
 Length: 7.16 m  
 Area: 18.05 m<sup>2</sup>  
 Perimeter: 21.23 m



## Stairway

Width: 0.98 m  
 Length: 3.21 m  
 Area: 3.13 m<sup>2</sup>  
 Perimeter: 8.38 m

