

35A Hardacre Street

SUBMITTED BY

Ray White Rockhampton Casey
stockers@cqoz.com

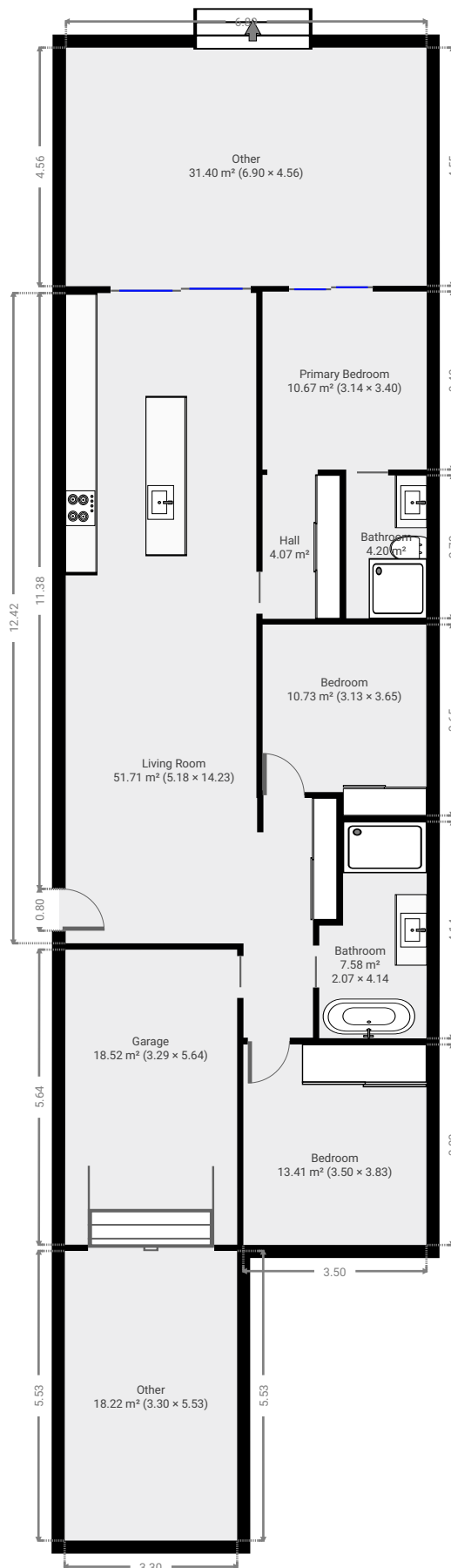
CREATED ON

2022-06-15

Floors

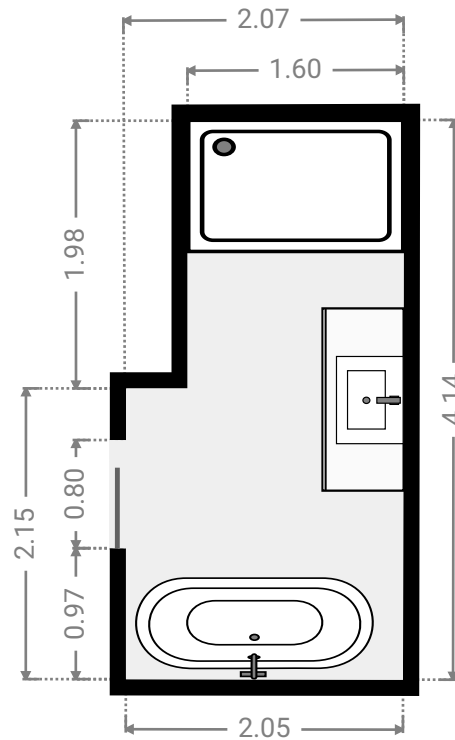
1

▼ Ground Floor



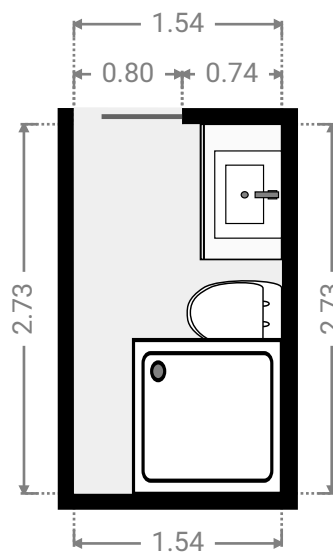
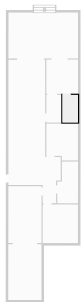
▼ **Bathroom**
Ground Floor

WIDTH: 2.07 m • LENGTH: 4.14 m
AREA: 7.58 m² • PERIMETER: 12.38 m



▼ **Bathroom**
Ground Floor

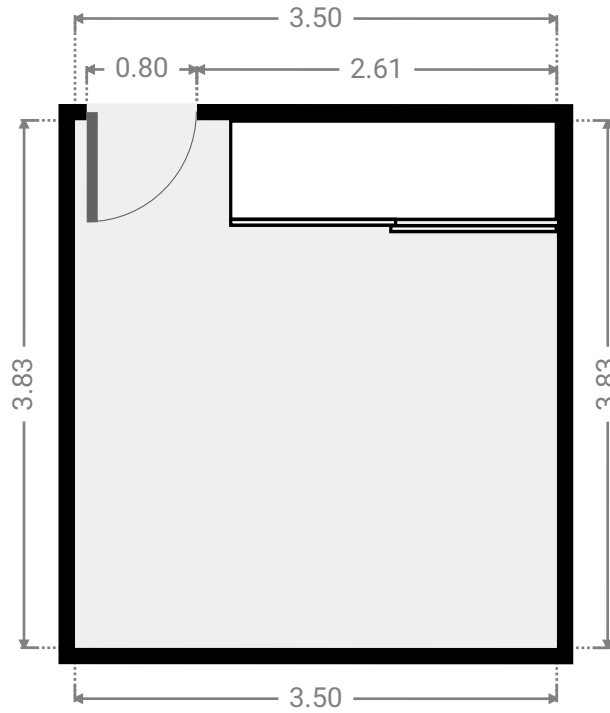
WIDTH: 1.54 m • LENGTH: 2.73 m
AREA: 4.20 m² • PERIMETER: 8.53 m



FLOORS: 1

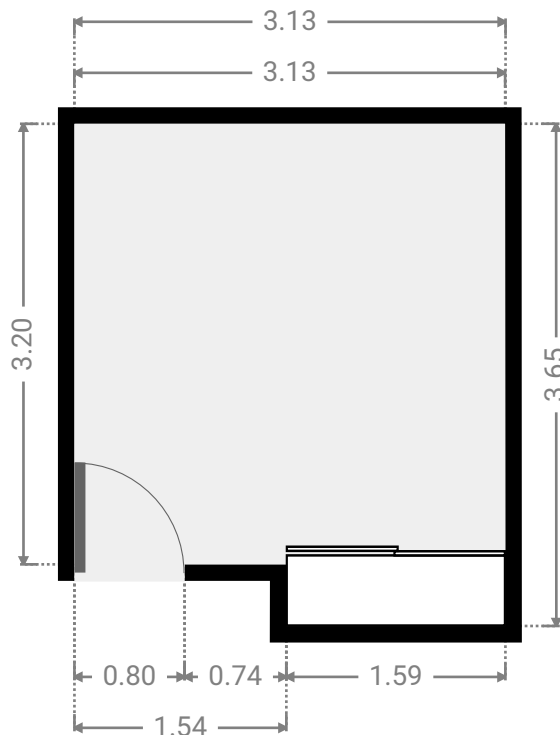
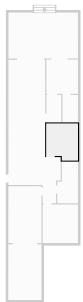
▼ **Bedroom**
Ground Floor

WIDTH: 3.50 m • LENGTH: 3.83 m
AREA: 13.41 m² • PERIMETER: 14.66 m



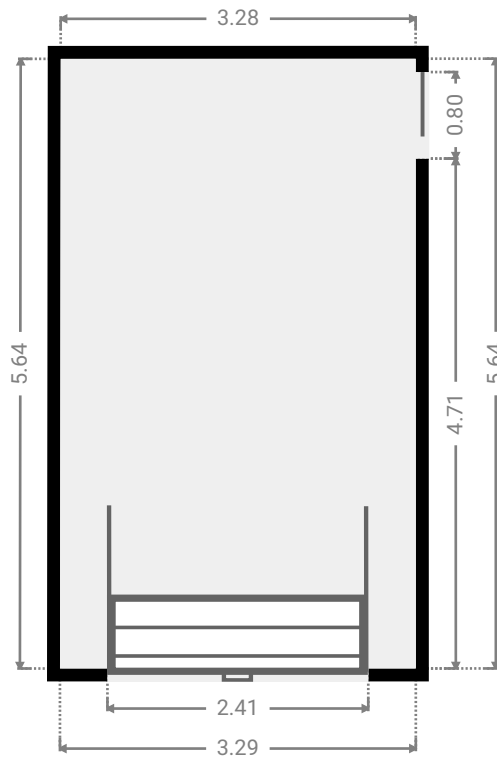
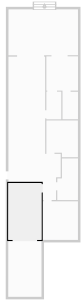
▼ **Bedroom**
Ground Floor

WIDTH: 3.13 m • LENGTH: 3.65 m
AREA: 10.73 m² • PERIMETER: 13.56 m



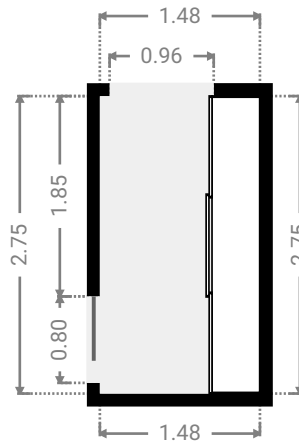
▼ **Garage**
Ground Floor

WIDTH: 3.29 m • LENGTH: 5.64 m
AREA: 18.52 m² • PERIMETER: 17.84 m



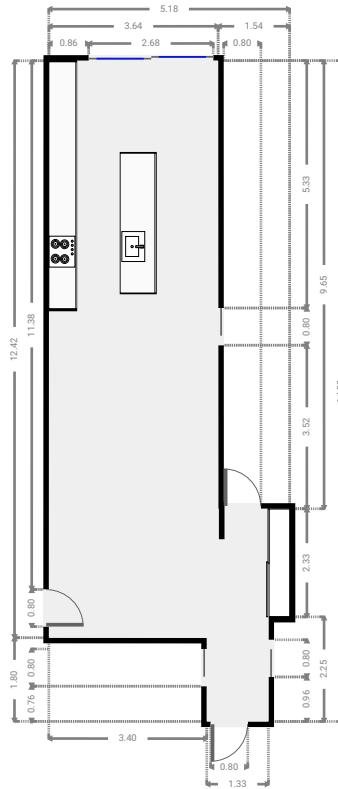
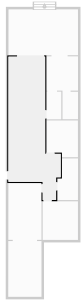
▼ **Hall**
Ground Floor

WIDTH: 1.48 m • LENGTH: 2.75 m
AREA: 4.07 m² • PERIMETER: 8.46 m



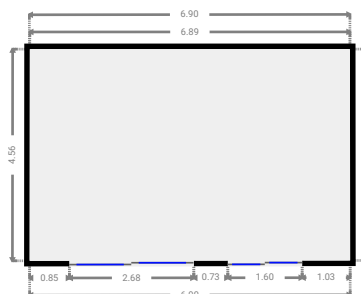
▼ Living Room
Ground Floor

WIDTH: 5.18 m • LENGTH: 14.23 m
AREA: 51.71 m² • PERIMETER: 38.81 m



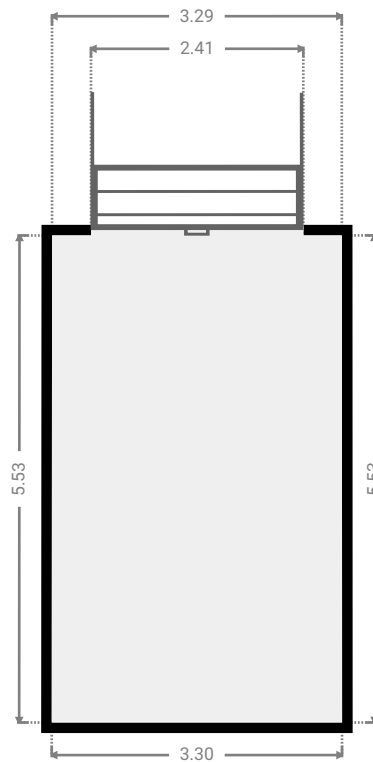
▼ Other
Ground Floor

WIDTH: 6.90 m • LENGTH: 4.56 m
AREA: 31.40 m² • PERIMETER: 22.90 m



▼ **Other**
Ground Floor

WIDTH: 3.30 m • LENGTH: 5.53 m
AREA: 18.22 m² • PERIMETER: 17.65 m



▼ **Primary Bedroom**
Ground Floor

WIDTH: 3.14 m • LENGTH: 3.40 m
AREA: 10.67 m² • PERIMETER: 13.08 m

