

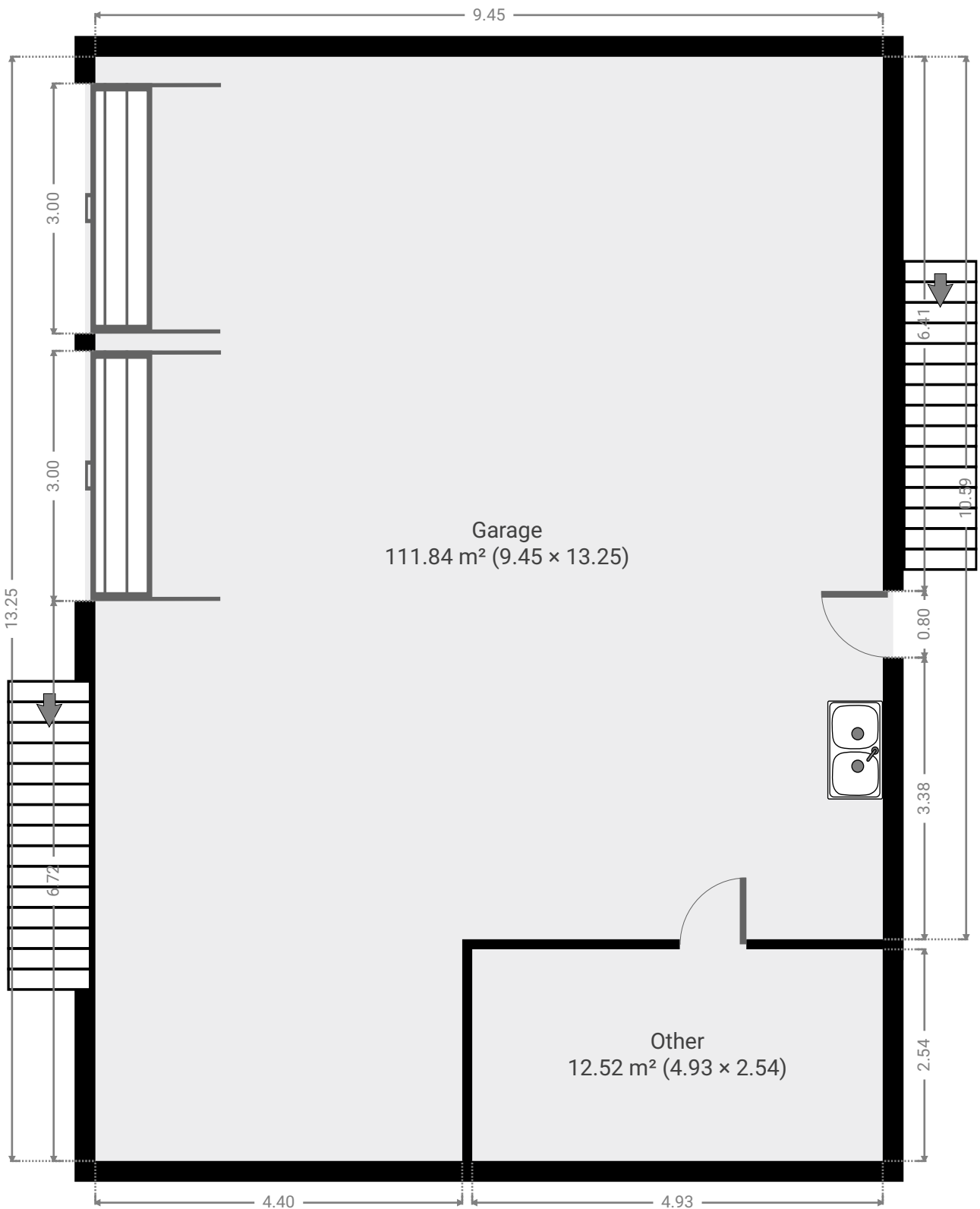
356 Philp Avenue

SUBMITTED BY
Ray White Rockhampton Casey
stockers@cqoz.com

CREATED ON
2022-04-13

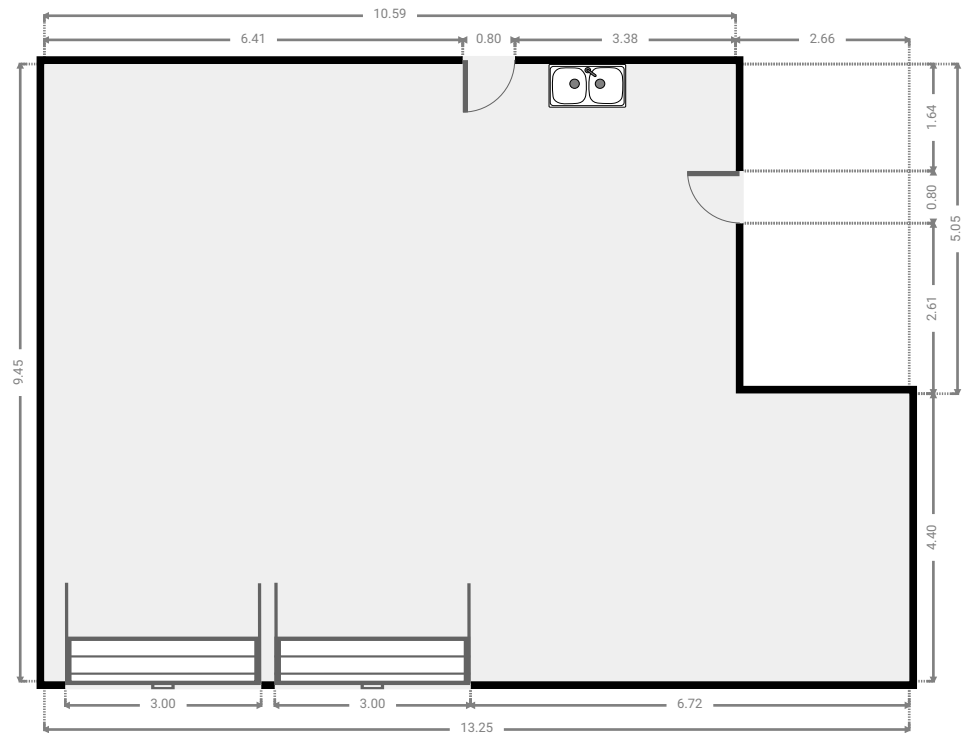
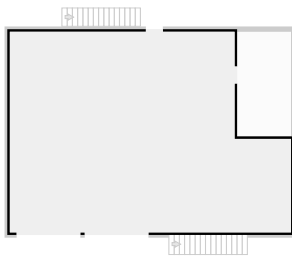
Floors
2

▼ Ground Floor



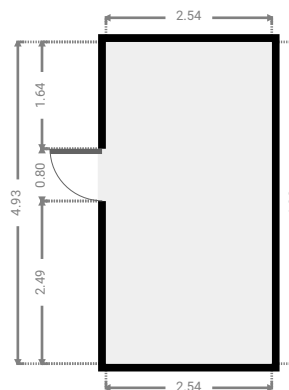
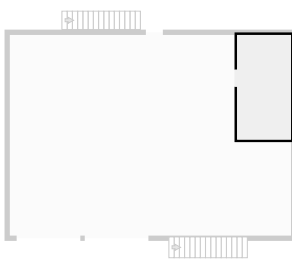
▼ **Garage**
Ground Floor

WIDTH: 13.25 m • LENGTH: 9.45 m
AREA: 111.84 m² • PERIMETER: 45.41 m

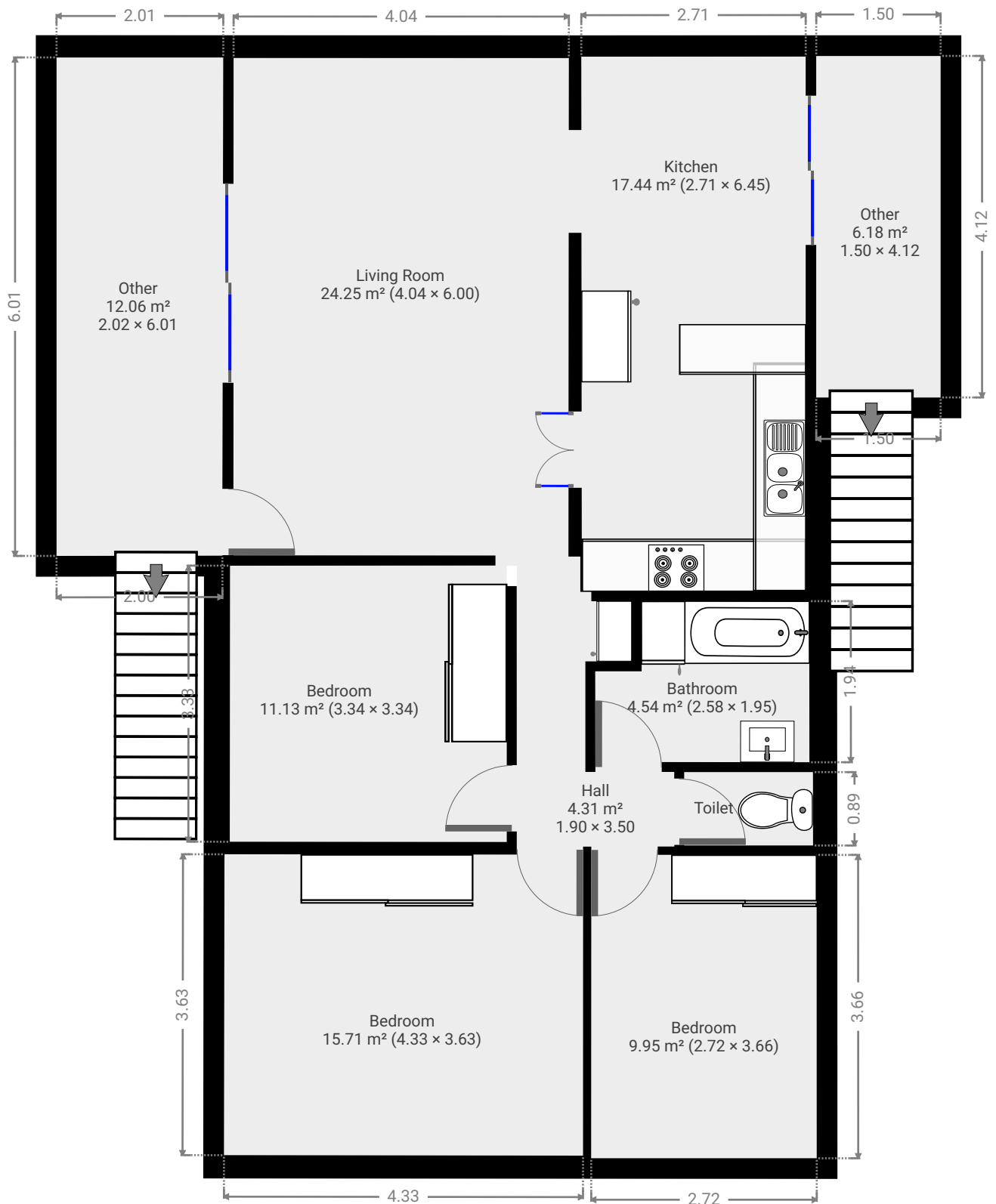


▼ **Other**
Ground Floor

WIDTH: 2.54 m • LENGTH: 4.93 m
AREA: 12.52 m² • PERIMETER: 14.94 m

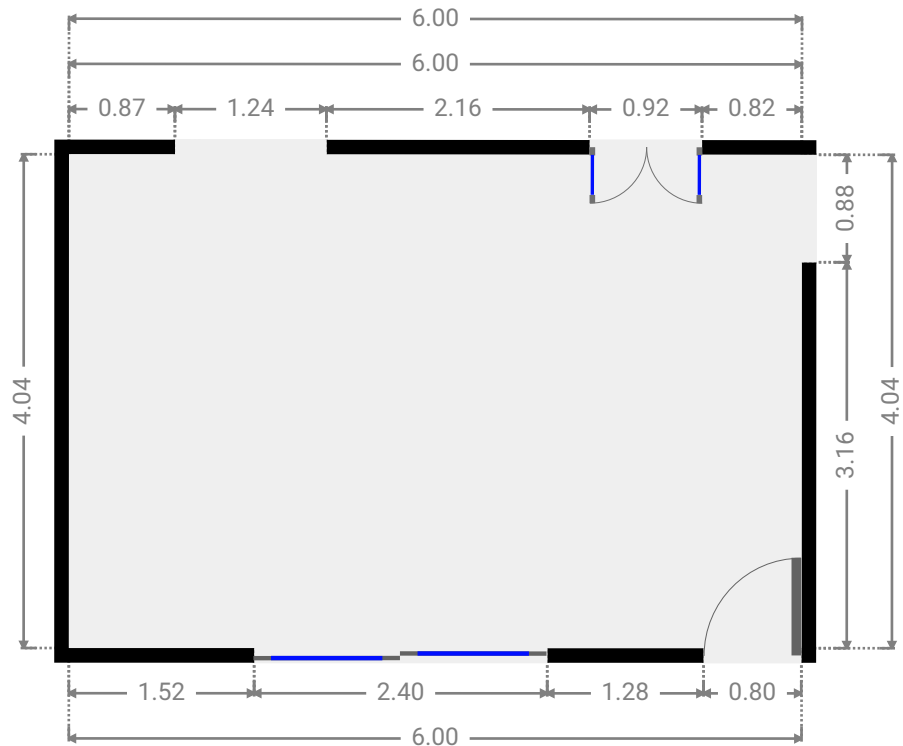
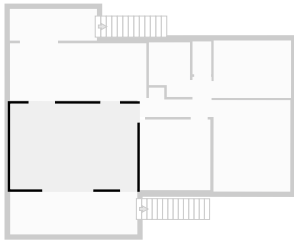


▼ 1st Floor



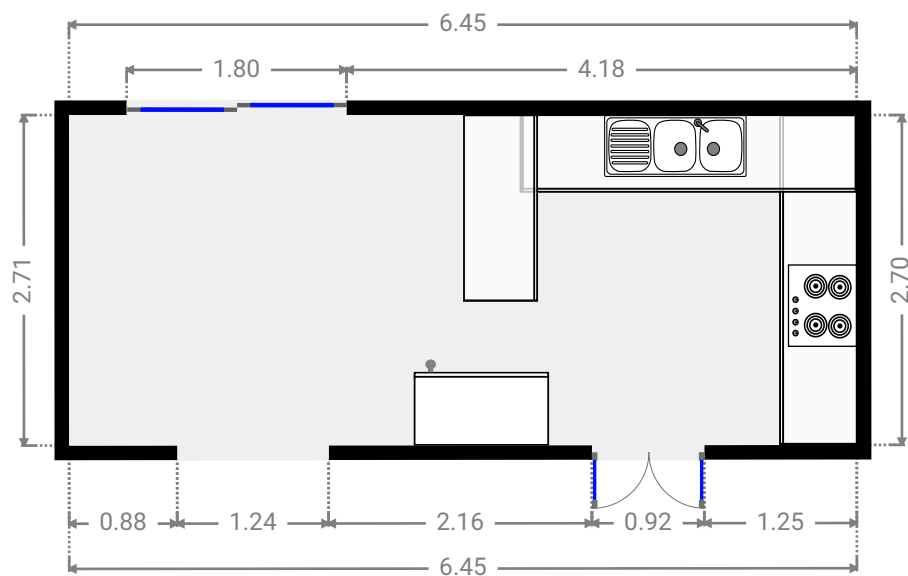
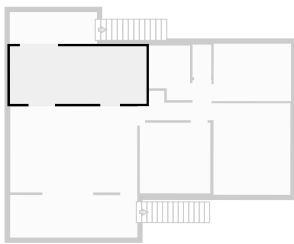
▼ Living Room
1st Floor

WIDTH: 6.00 m • LENGTH: 4.04 m
AREA: 24.25 m² • PERIMETER: 20.08 m



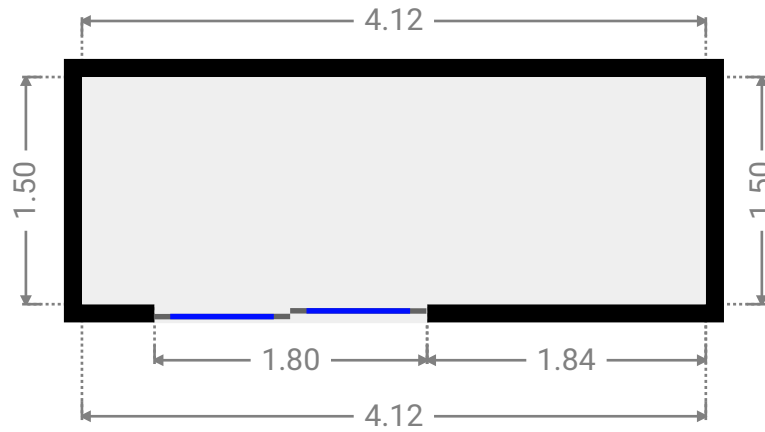
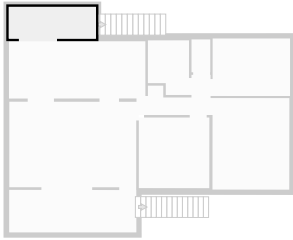
▼ Kitchen
1st Floor

WIDTH: 6.45 m • LENGTH: 2.71 m
AREA: 17.44 m² • PERIMETER: 18.31 m



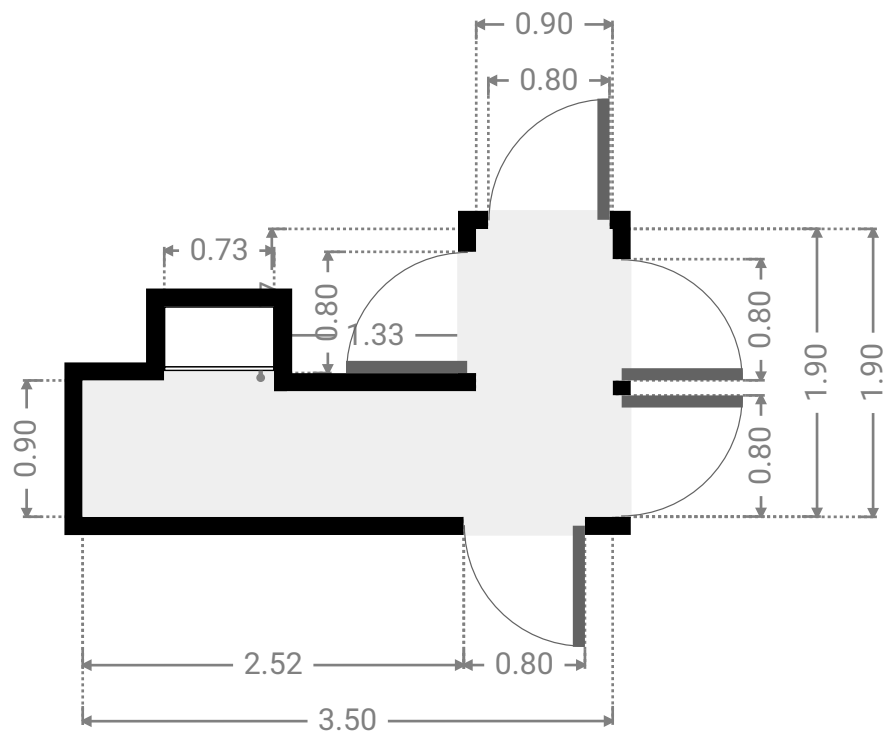
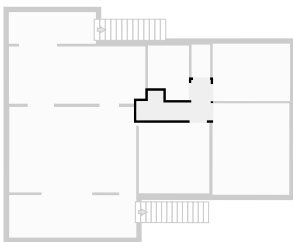
▼ **Other**
1st Floor

WIDTH: 4.12 m • LENGTH: 1.50 m
AREA: 6.18 m² • PERIMETER: 11.24 m



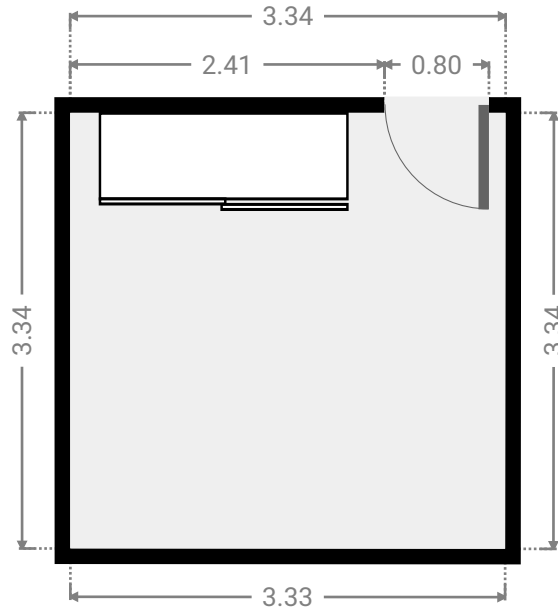
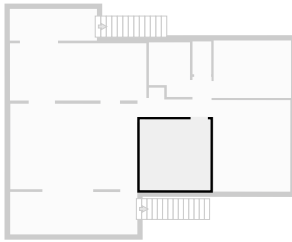
▼ **Hall**
1st Floor

WIDTH: 3.50 m • LENGTH: 1.90 m
AREA: 4.31 m² • PERIMETER: 11.92 m



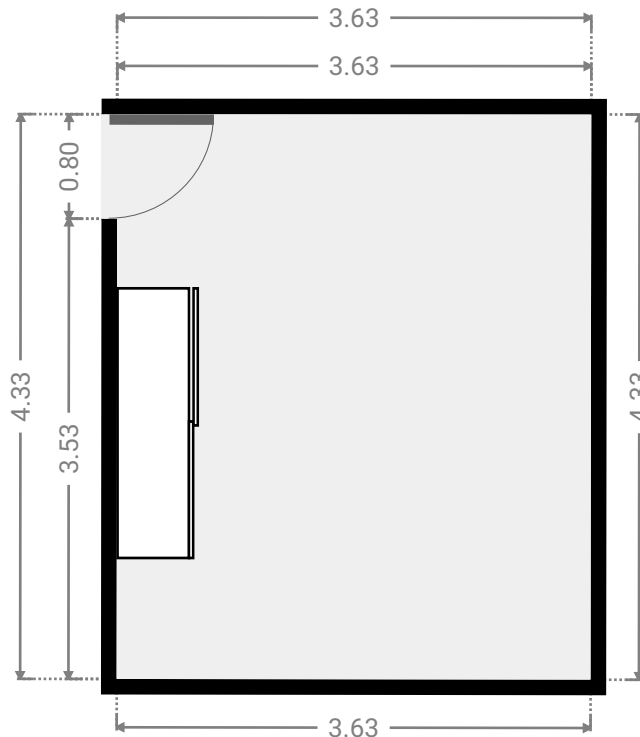
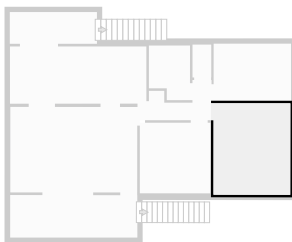
▼ **Bedroom**
1st Floor

WIDTH: 3.34 m • LENGTH: 3.34 m
AREA: 11.13 m² • PERIMETER: 13.34 m



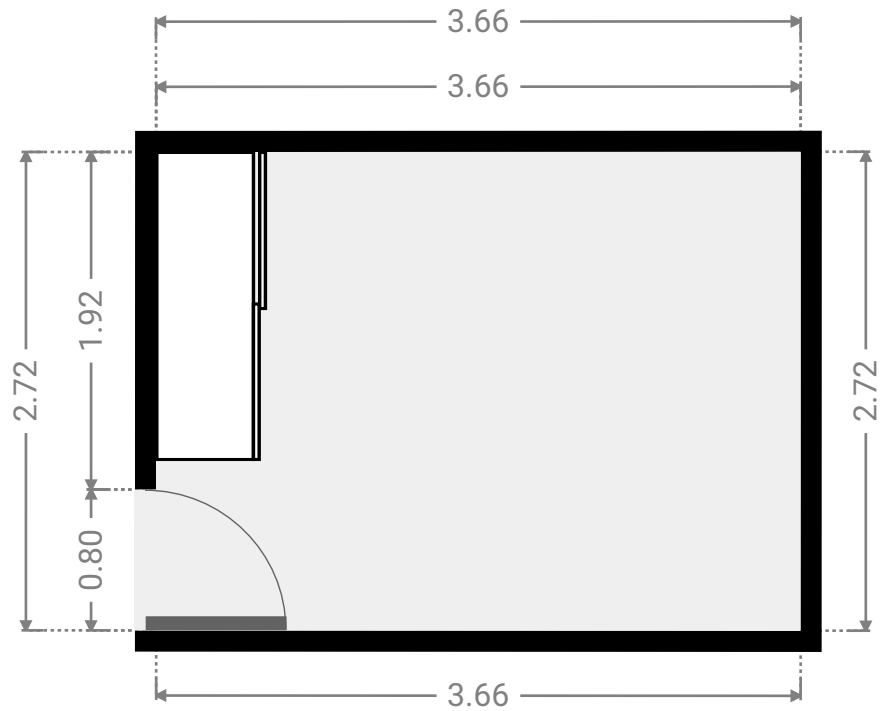
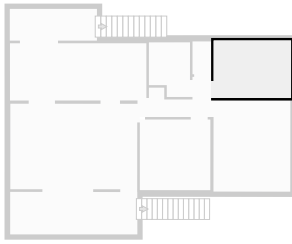
▼ **Bedroom**
1st Floor

WIDTH: 3.63 m • LENGTH: 4.33 m
AREA: 15.71 m² • PERIMETER: 15.92 m



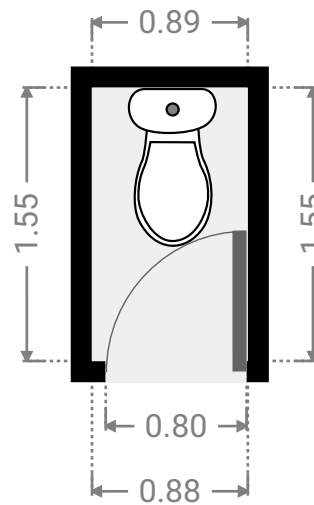
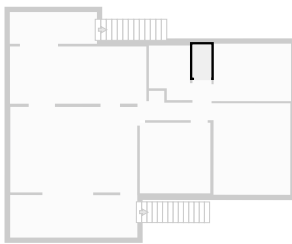
▼ **Bedroom**
1st Floor

WIDTH: 3.66 m • LENGTH: 2.72 m
AREA: 9.95 m² • PERIMETER: 12.76 m



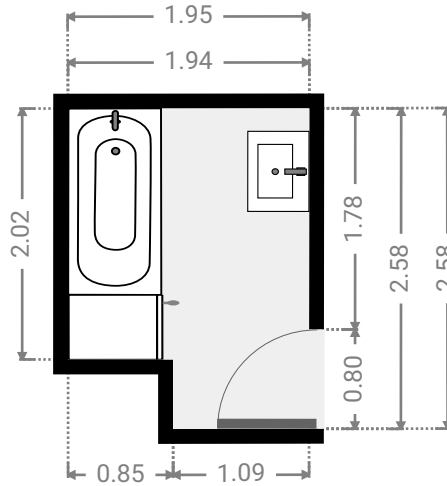
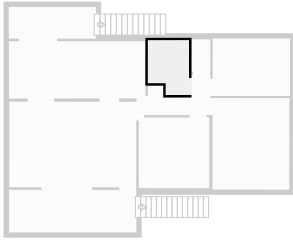
▼ **Toilet**
1st Floor

WIDTH: 0.89 m • LENGTH: 1.55 m
AREA: 1.37 m² • PERIMETER: 4.88 m



▼ **Bathroom**
1st Floor

WIDTH: 1.95 m • LENGTH: 2.58 m
AREA: 4.54 m² • PERIMETER: 9.05 m



▼ **Other**
1st Floor

WIDTH: 6.01 m • LENGTH: 2.02 m
AREA: 12.06 m² • PERIMETER: 16.03 m

