

356 Irving Avenue

SUBMITTED BY

Ray White Rockhampton Casey
stockers@cqoz.com

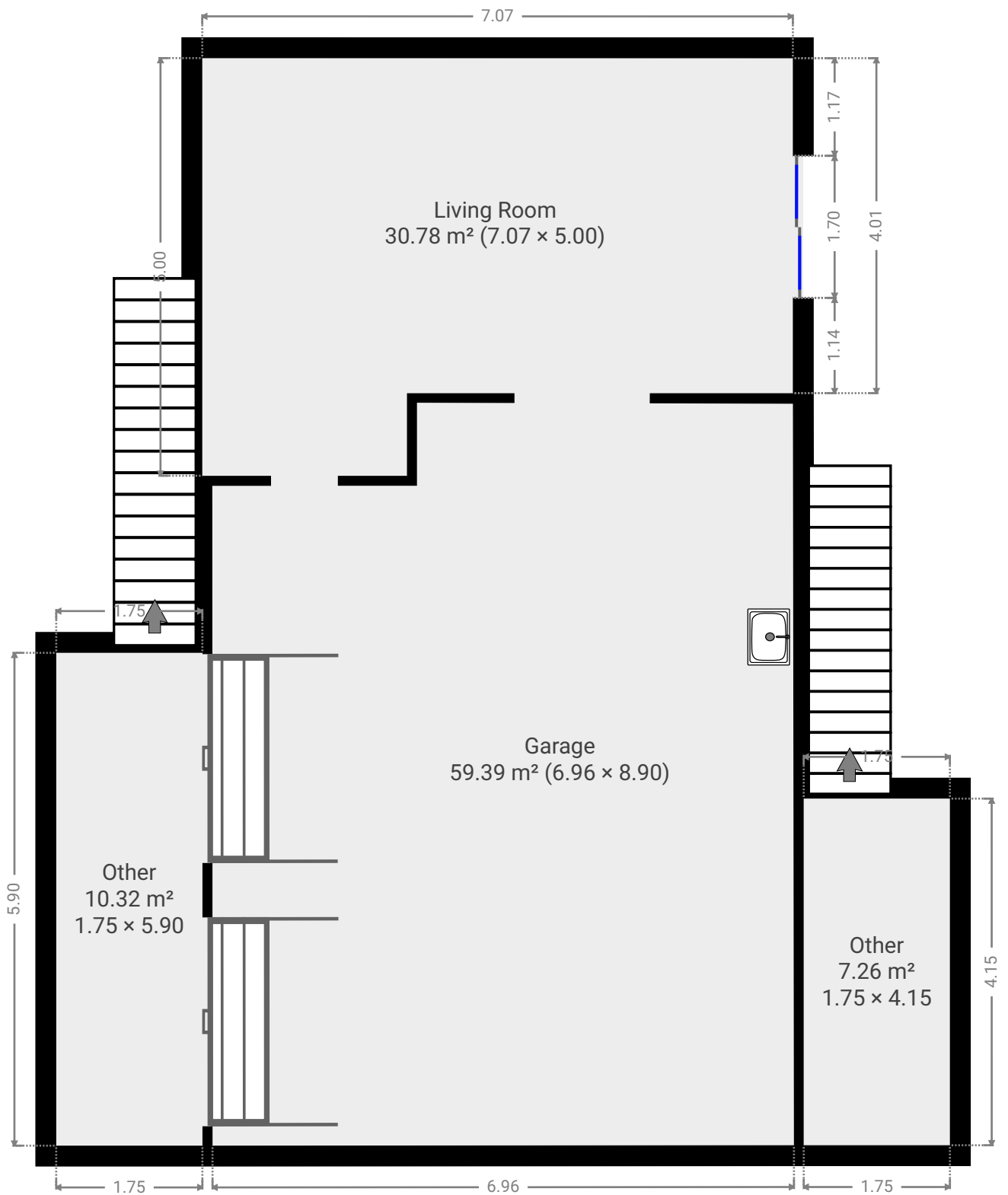
CREATED ON

2022-03-21

Floors

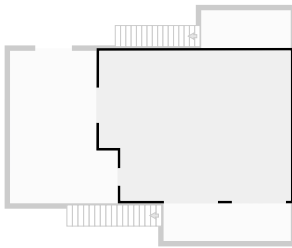
2

▼ Ground Floor



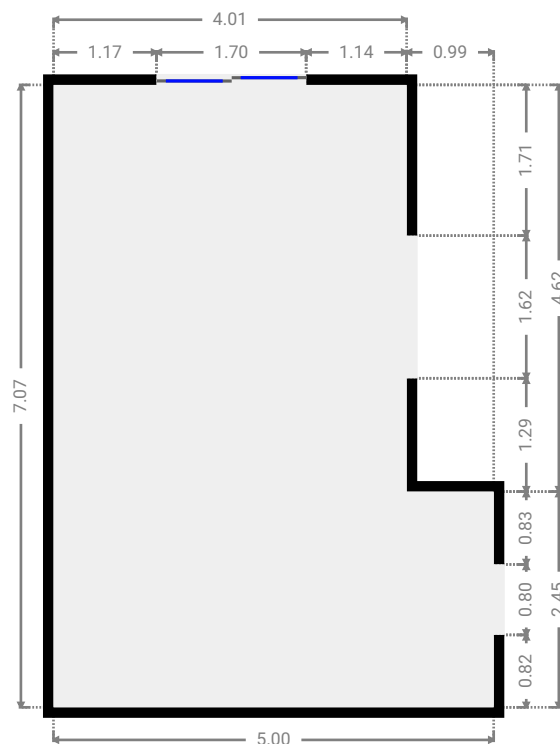
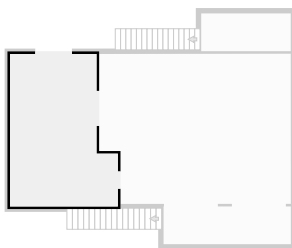
▼ **Garage**
Ground Floor

WIDTH: 8.89 m • LENGTH: 6.96 m
AREA: 59.39 m² • PERIMETER: 31.68 m



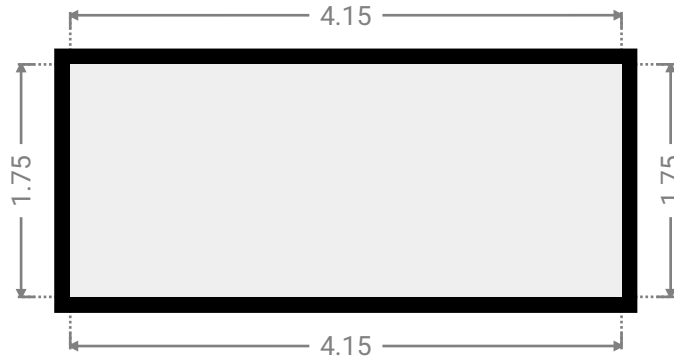
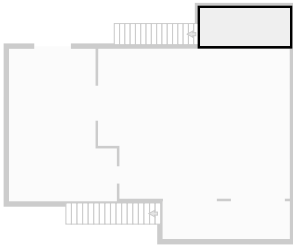
▼ **Living Room**
Ground Floor

WIDTH: 5.00 m • LENGTH: 7.07 m
AREA: 30.78 m² • PERIMETER: 24.14 m



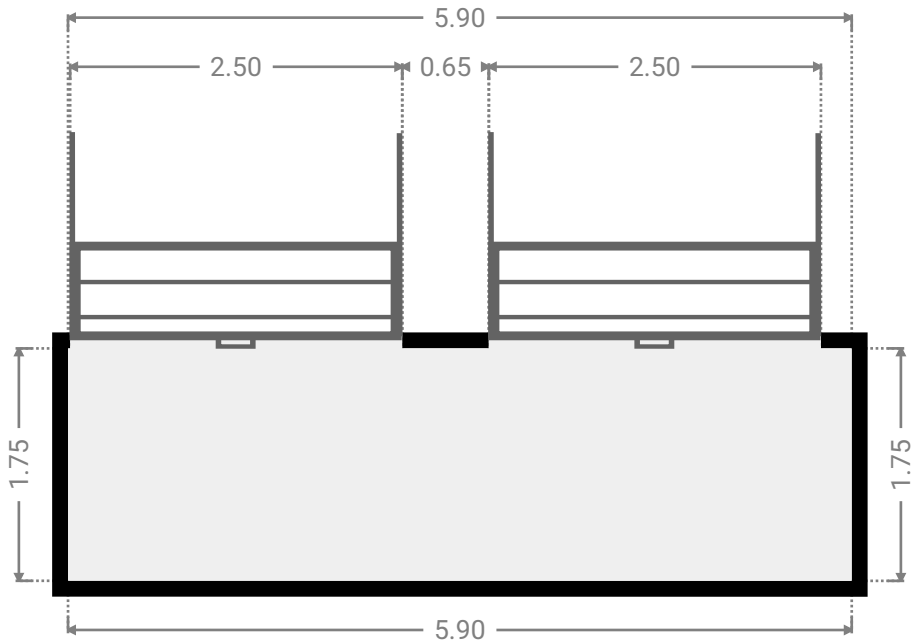
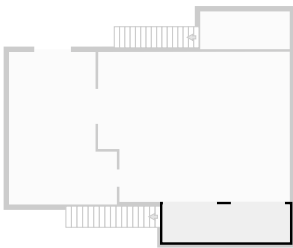
▼ Other
Ground Floor

WIDTH: 4.15 m • LENGTH: 1.75 m
AREA: 7.26 m² • PERIMETER: 11.80 m

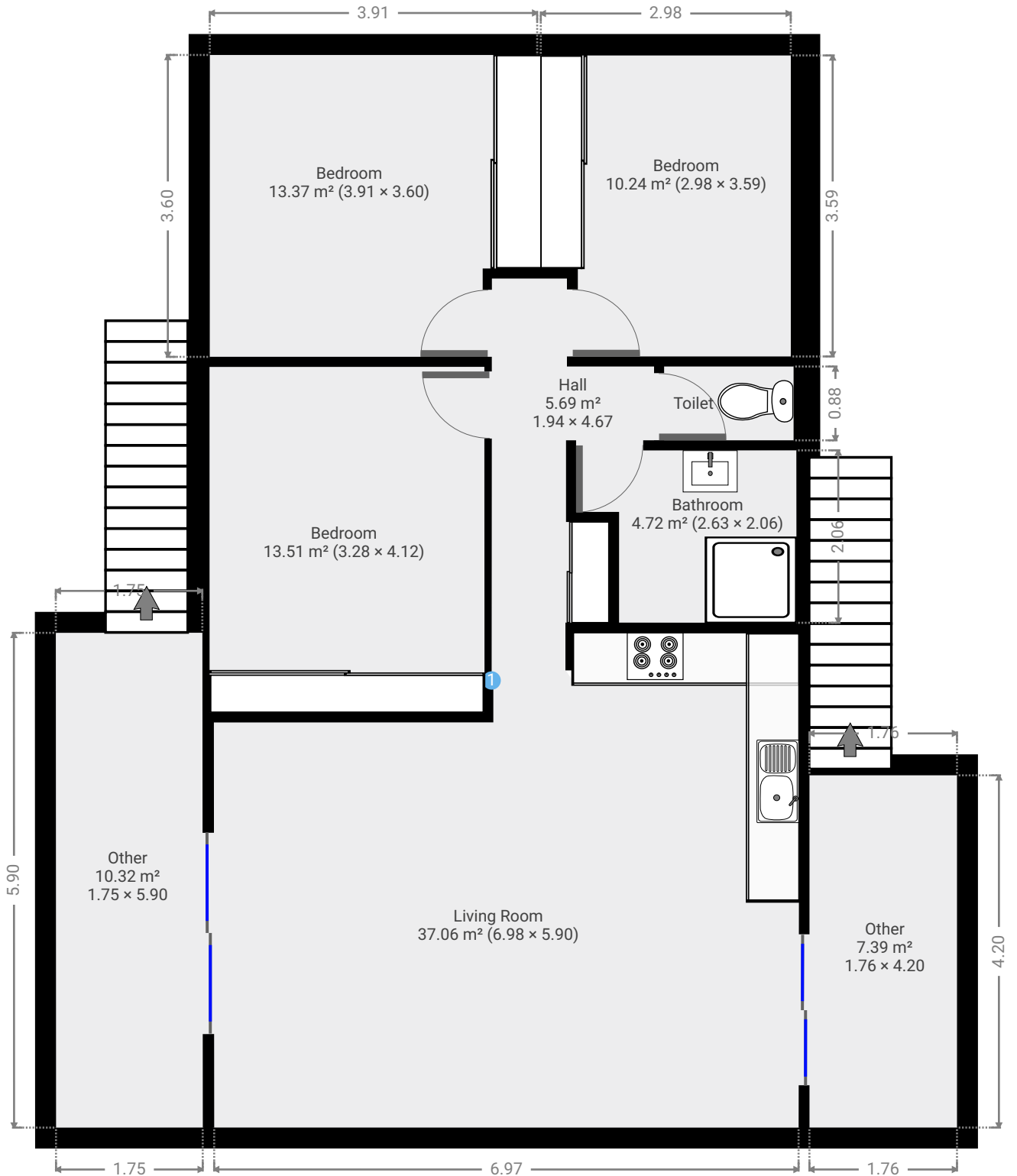


▼ Other
Ground Floor

WIDTH: 5.90 m • LENGTH: 1.75 m
AREA: 10.32 m² • PERIMETER: 15.30 m

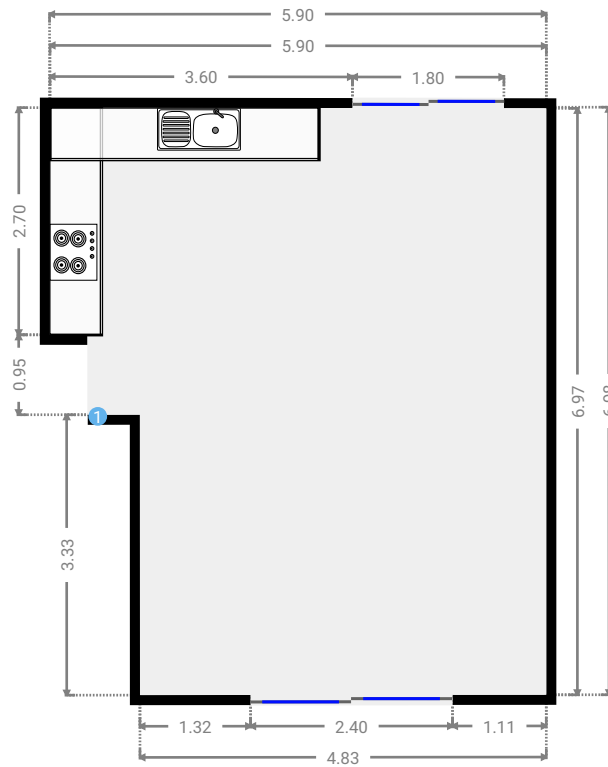
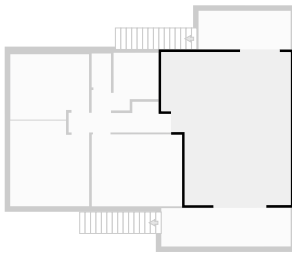


▼ 1st Floor



▼ Living Room 1st Floor

WIDTH: 5.90 m • LENGTH: 6.98 m
AREA: 37.06 m² • PERIMETER: 25.75 m



▼ Living Room/1st Floor

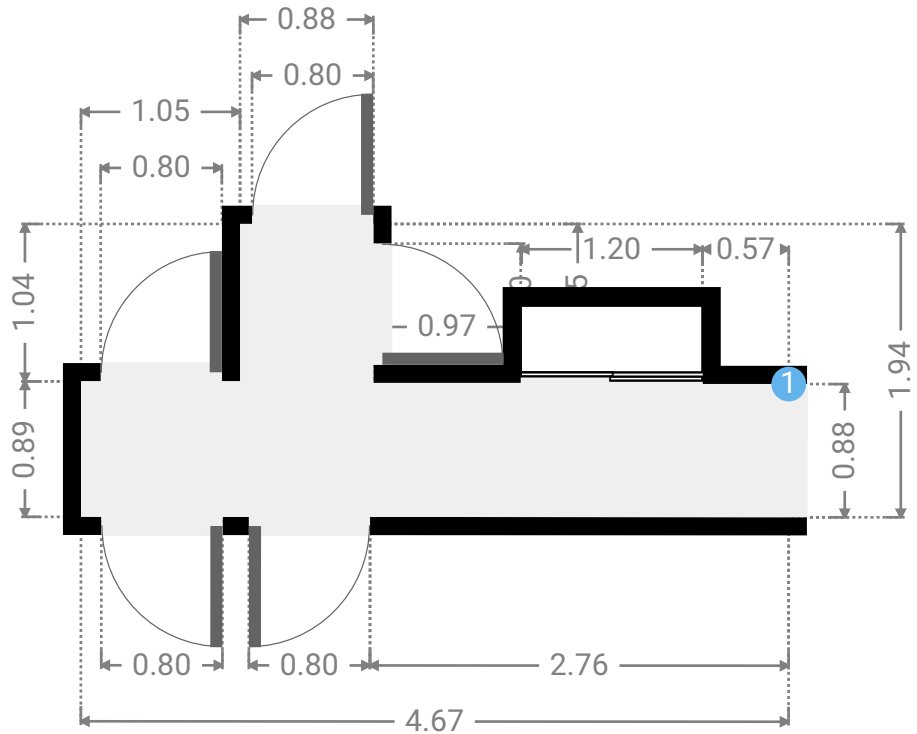
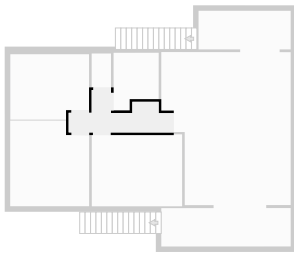
1 OPENING

Height
0.00 m



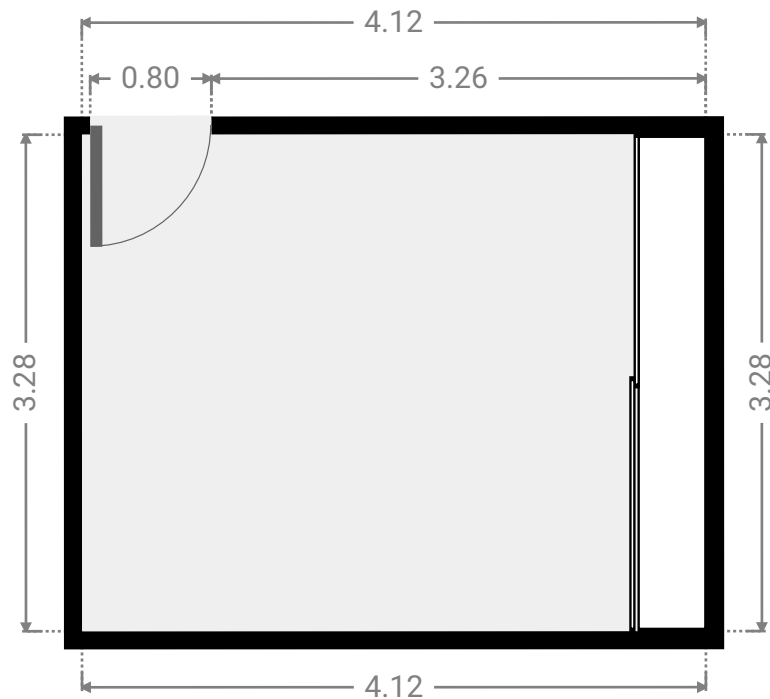
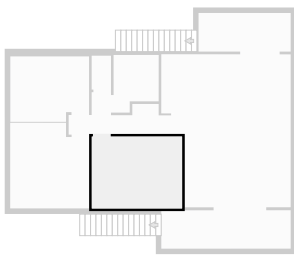
▼ **Hall**
1st Floor

WIDTH: 4.67 m • LENGTH: 1.94 m
AREA: 5.69 m² • PERIMETER: 14.24 m



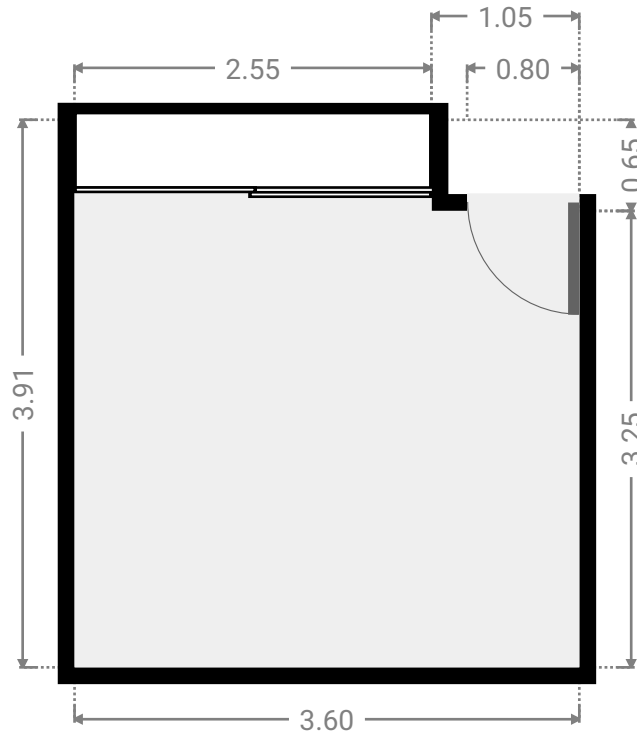
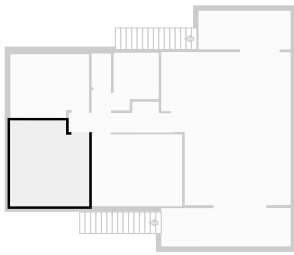
▼ **Bedroom**
1st Floor

WIDTH: 4.12 m • LENGTH: 3.28 m
AREA: 13.51 m² • PERIMETER: 14.80 m



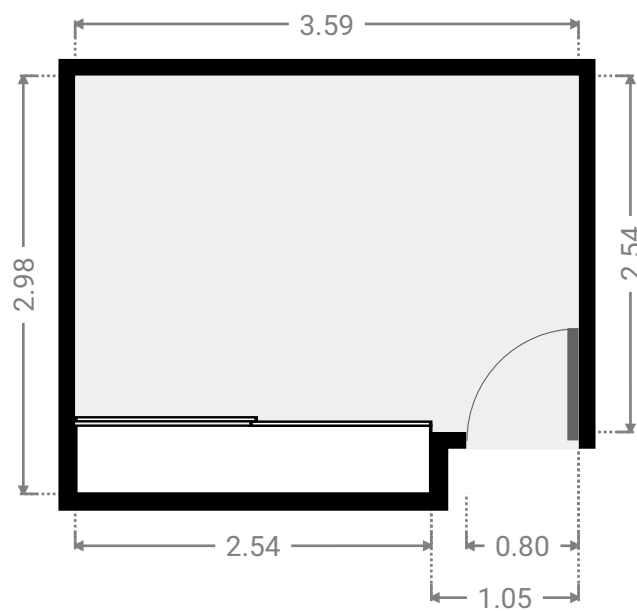
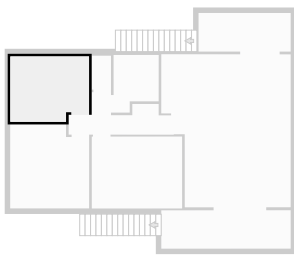
▼ **Bedroom**
1st Floor

WIDTH: 3.60 m • LENGTH: 3.91 m
AREA: 13.37 m² • PERIMETER: 15.01 m



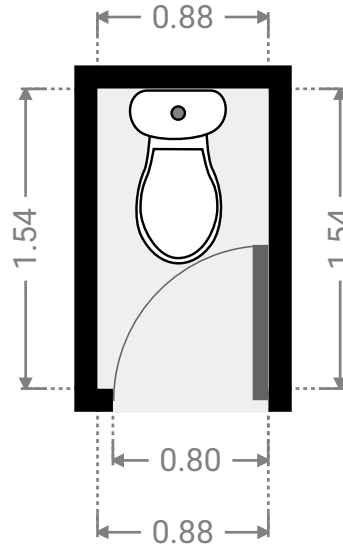
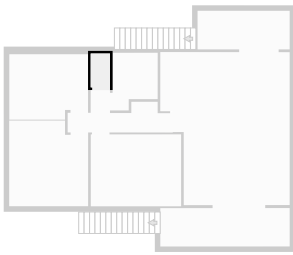
▼ **Bedroom**
1st Floor

WIDTH: 3.59 m • LENGTH: 2.98 m
AREA: 10.24 m² • PERIMETER: 13.14 m



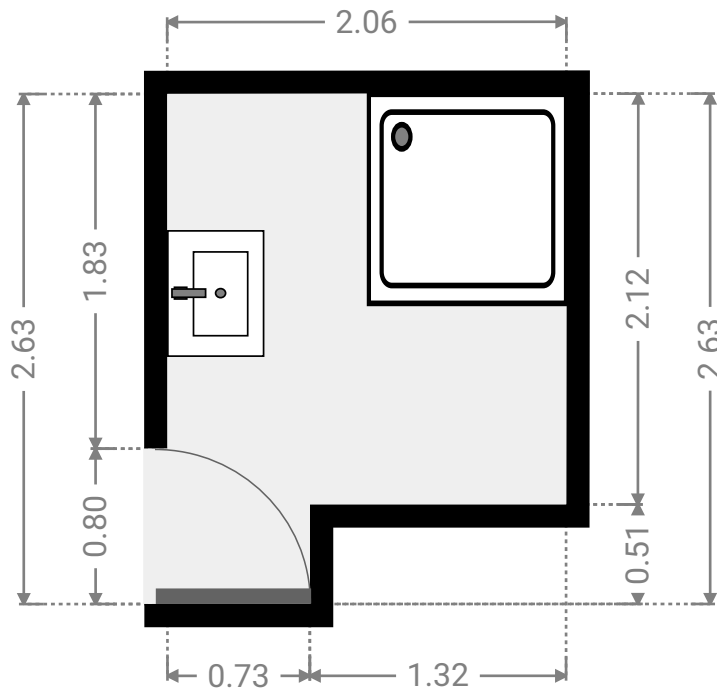
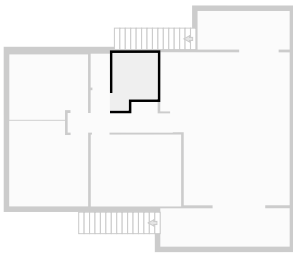
▼ **Toilet**
1st Floor

WIDTH: 0.88 m • LENGTH: 1.54 m
AREA: 1.36 m² • PERIMETER: 4.85 m



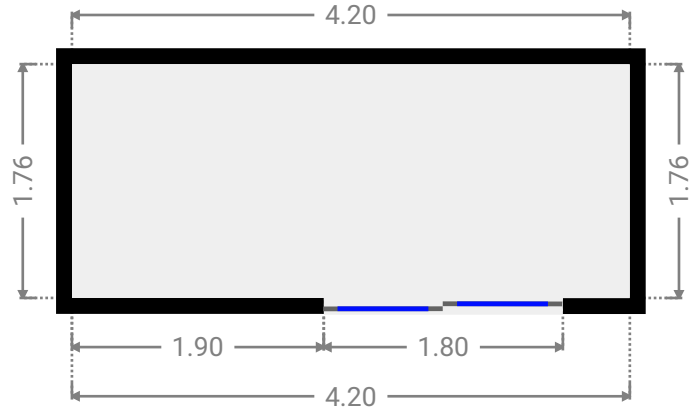
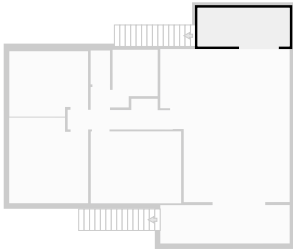
▼ **Bathroom**
1st Floor

WIDTH: 2.06 m • LENGTH: 2.63 m
AREA: 4.72 m² • PERIMETER: 9.37 m



▼ Other
1st Floor

WIDTH: 4.20 m • LENGTH: 1.76 m
AREA: 7.39 m² • PERIMETER: 11.92 m



▼ Other
1st Floor

WIDTH: 5.90 m • LENGTH: 1.75 m
AREA: 10.32 m² • PERIMETER: 15.30 m

