

355 Lawrence Av

SUBMITTED BY
Ray White Rockhampton Casey
stockers@cqoz.com

CREATED ON
2022-10-04

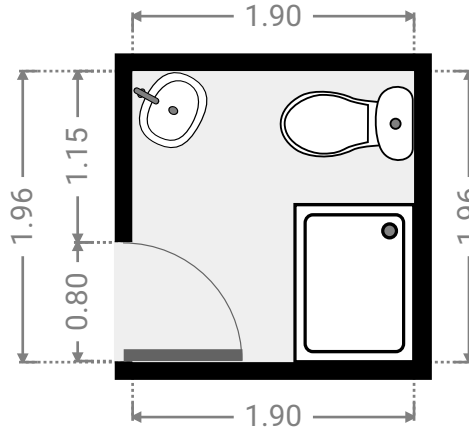
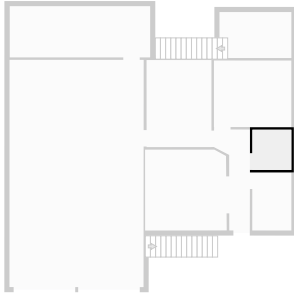
Floors
2

▼ Ground Floor



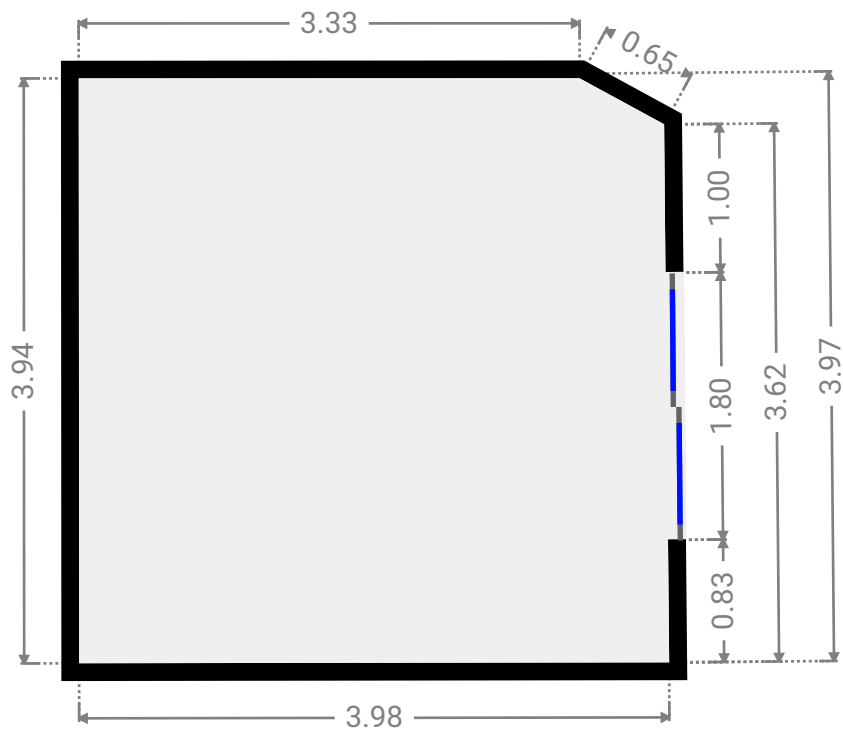
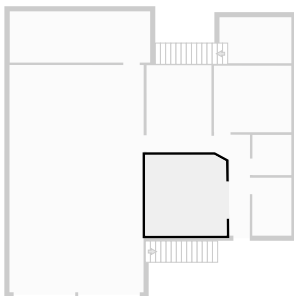
▼ **Bathroom**
Ground Floor

WIDTH: 1.90 m • LENGTH: 1.96 m
AREA: 3.72 m² • PERIMETER: 7.71 m



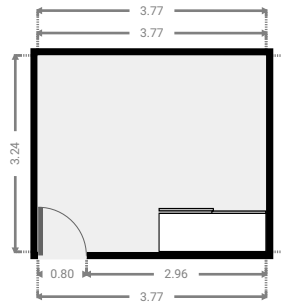
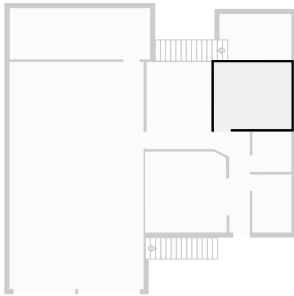
▼ **Bedroom**
Ground Floor

WIDTH: 3.98 m • LENGTH: 3.97 m
AREA: 15.50 m² • PERIMETER: 15.56 m



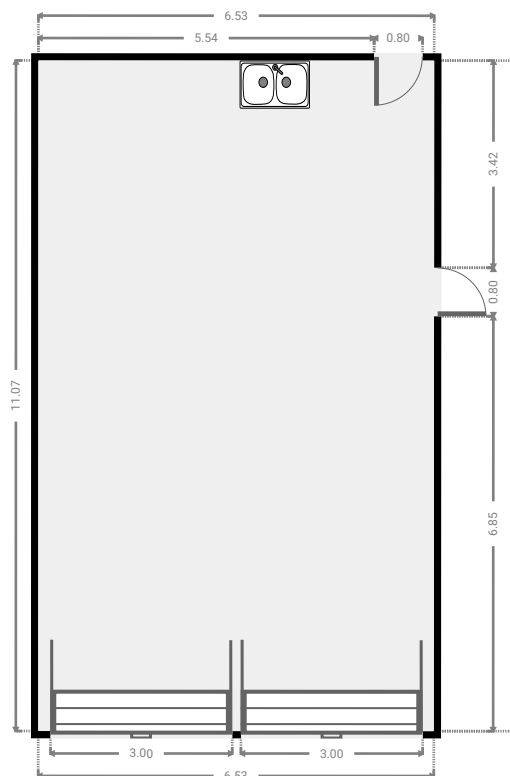
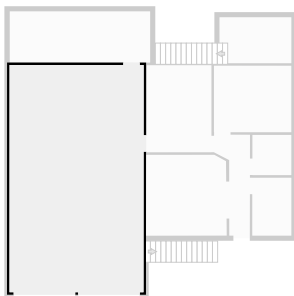
▼ **Bedroom**
Ground Floor

WIDTH: 3.77 m • LENGTH: 3.24 m
AREA: 12.22 m² • PERIMETER: 14.02 m



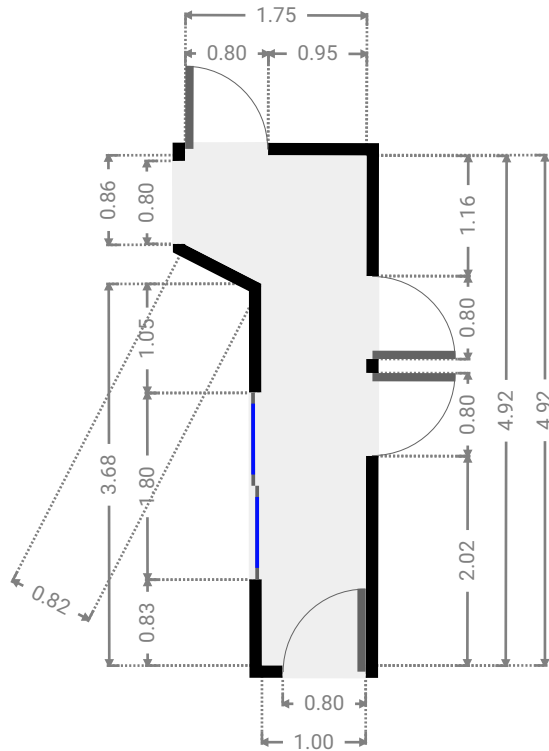
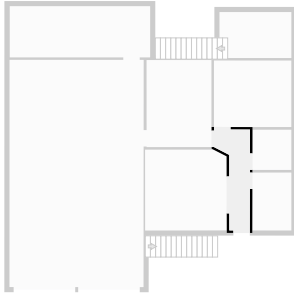
▼ **Garage**
Ground Floor

WIDTH: 6.53 m • LENGTH: 11.07 m
AREA: 72.31 m² • PERIMETER: 35.20 m



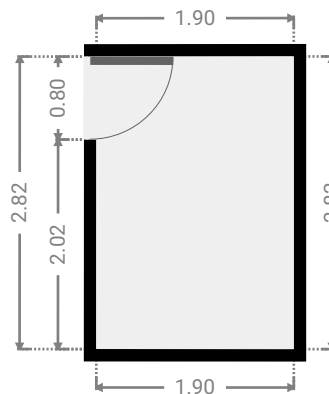
▼ **Hall**
Ground Floor

WIDTH: 1.75 m • LENGTH: 4.92 m
AREA: 5.73 m² • PERIMETER: 13.03 m



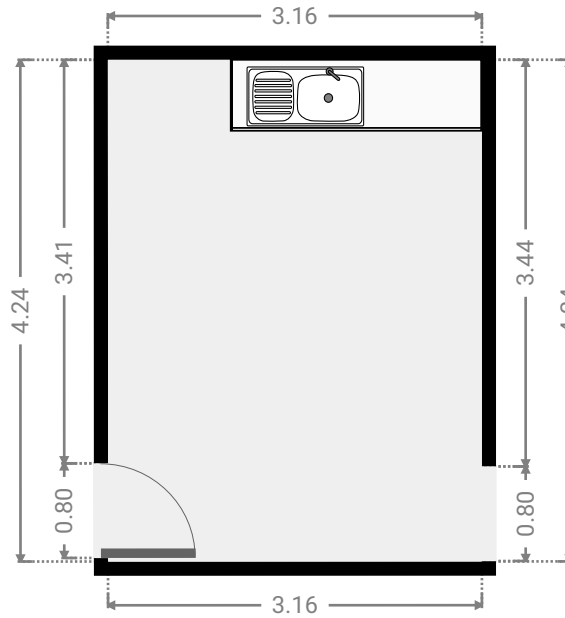
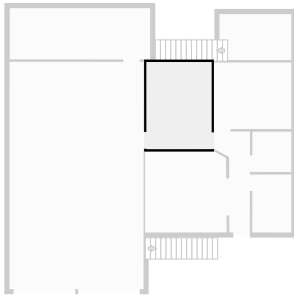
▼ **Closet**
Ground Floor

WIDTH: 1.90 m • LENGTH: 2.82 m
AREA: 5.37 m² • PERIMETER: 9.45 m



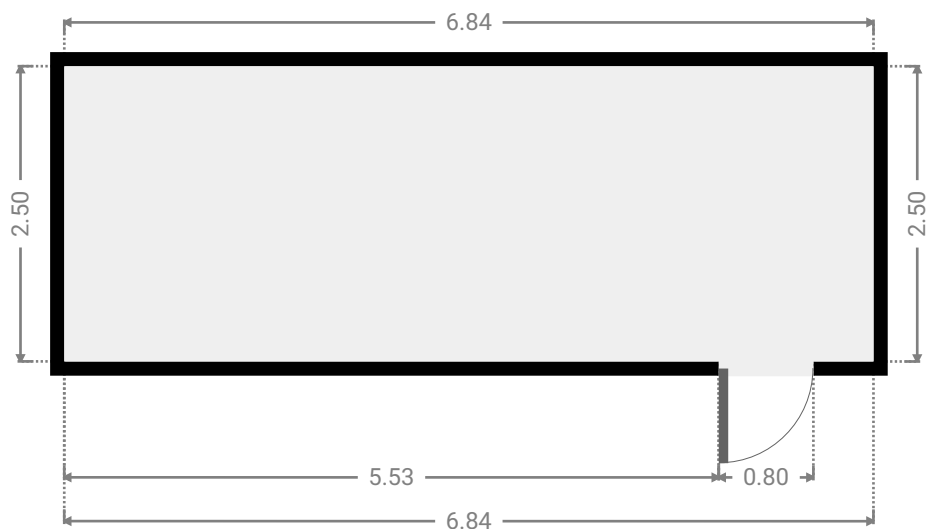
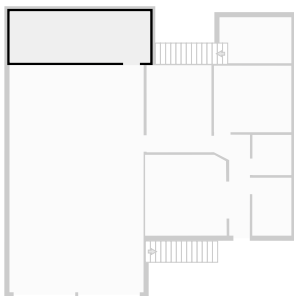
▼ **Kitchen**
Ground Floor

WIDTH: 3.16 m • LENGTH: 4.24 m
AREA: 13.40 m² • PERIMETER: 14.80 m



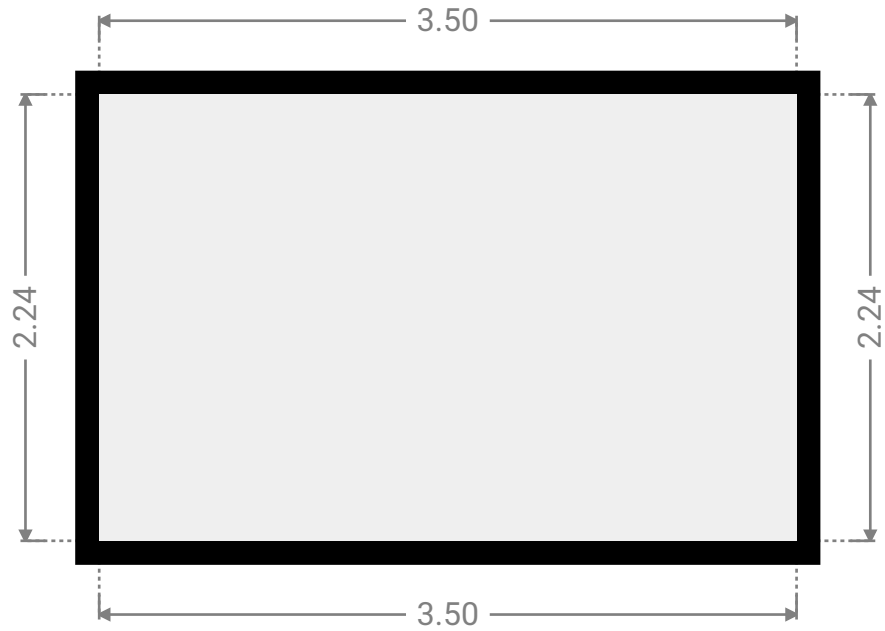
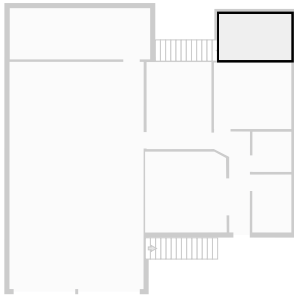
▼ **Other**
Ground Floor

WIDTH: 6.84 m • LENGTH: 2.50 m
AREA: 17.07 m² • PERIMETER: 18.67 m



▼ Other
Ground Floor

WIDTH: 3.50 m • LENGTH: 2.24 m
AREA: 7.84 m² • PERIMETER: 11.48 m

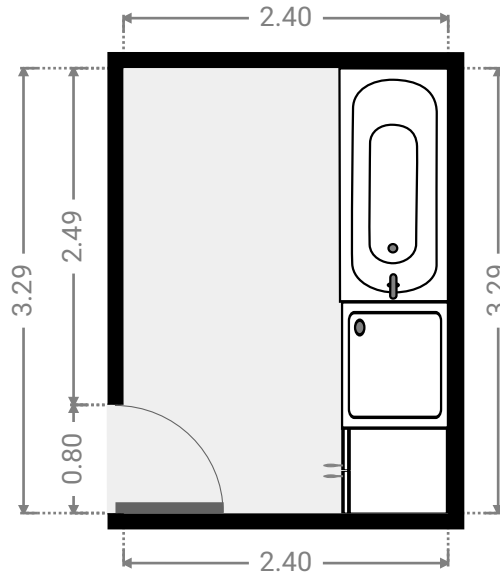
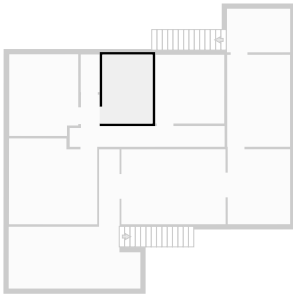


▼ 1st Floor



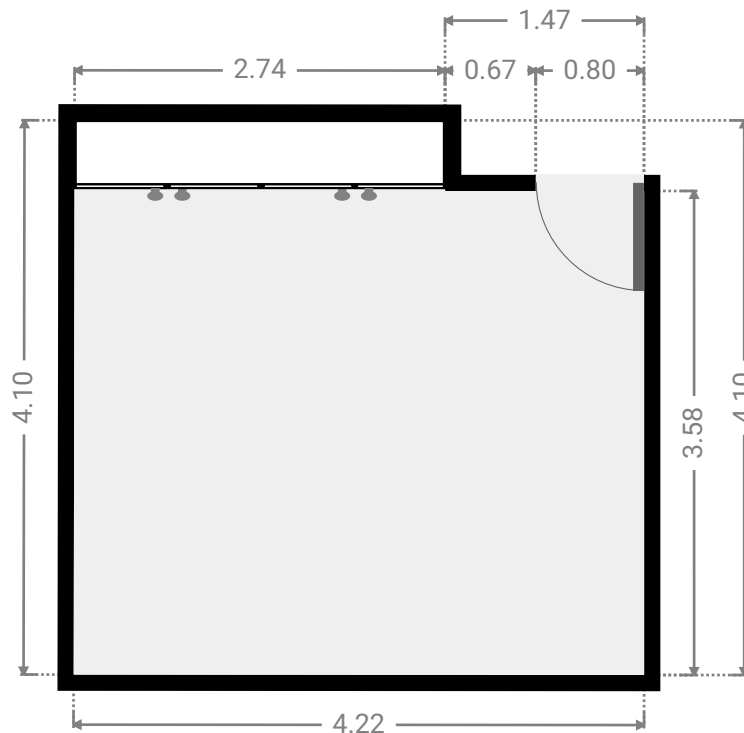
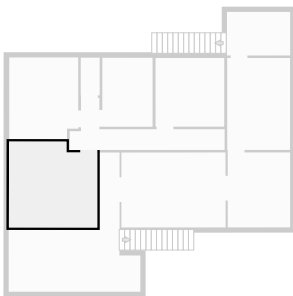
▼ **Bathroom**
1st Floor

WIDTH: 2.40 m • LENGTH: 3.29 m
AREA: 7.90 m² • PERIMETER: 11.38 m



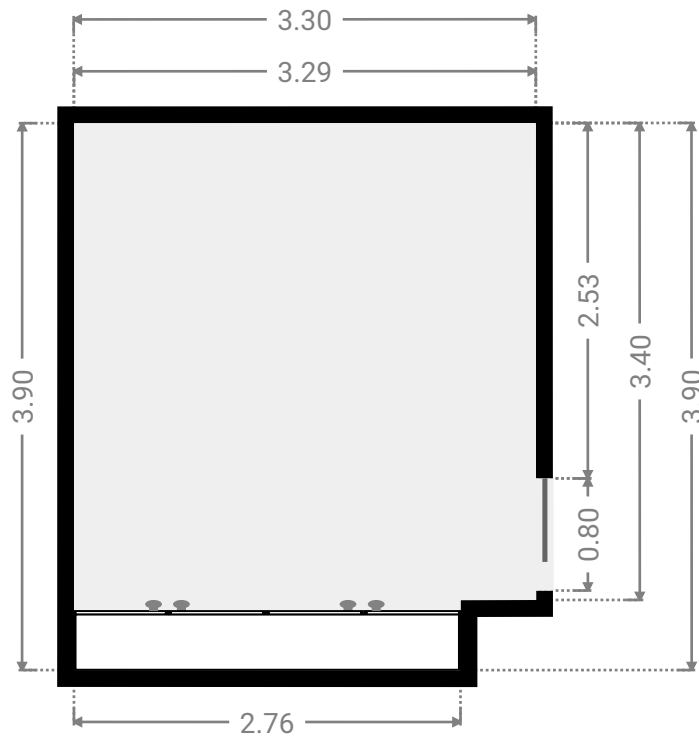
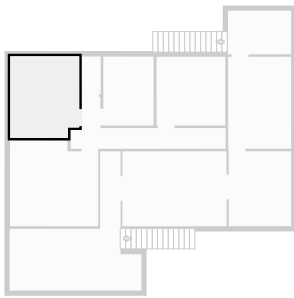
▼ **Bedroom**
1st Floor

WIDTH: 4.22 m • LENGTH: 4.10 m
AREA: 16.52 m² • PERIMETER: 16.63 m



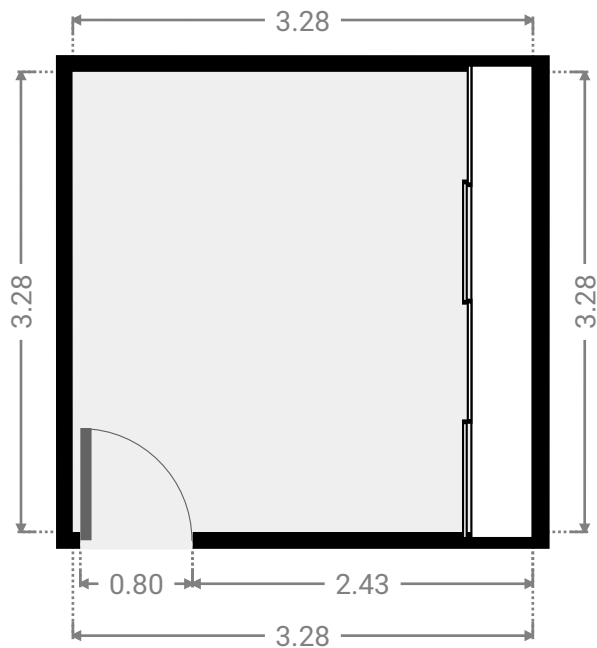
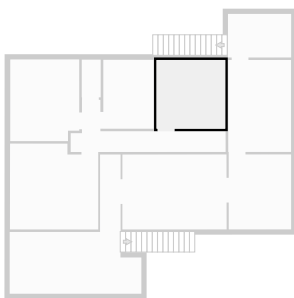
▼ **Bedroom**
1st Floor

WIDTH: 3.30 m • LENGTH: 3.90 m
AREA: 12.58 m² • PERIMETER: 14.39 m



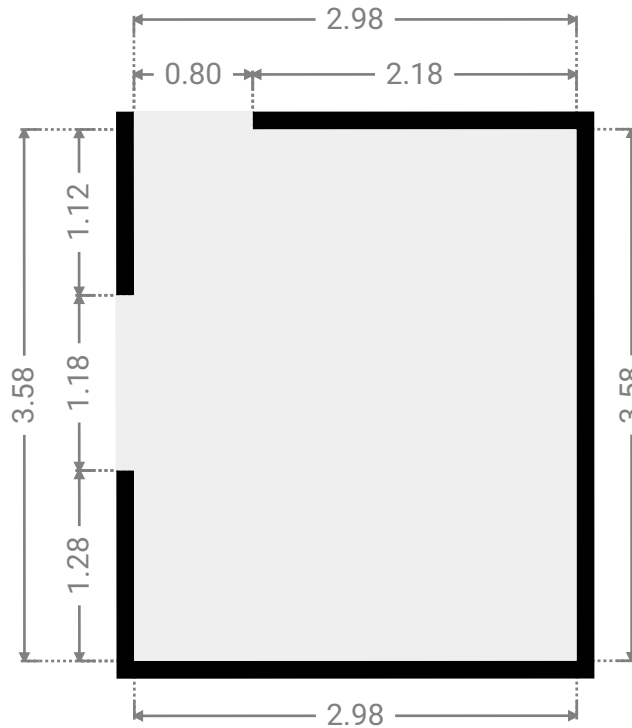
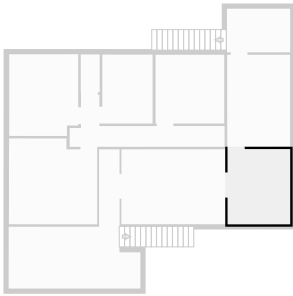
▼ **Bedroom**
1st Floor

WIDTH: 3.28 m • LENGTH: 3.28 m
AREA: 10.76 m² • PERIMETER: 13.12 m



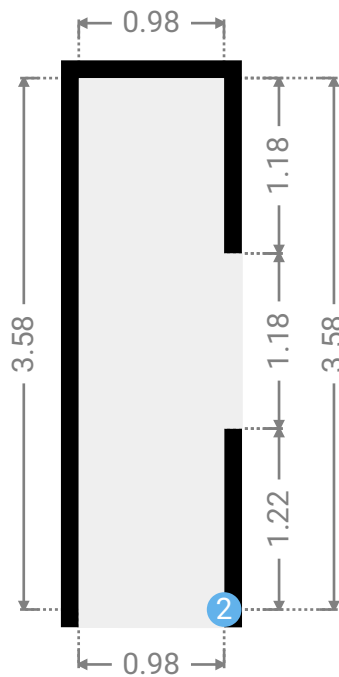
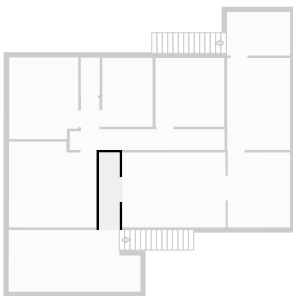
▼ Dining Room
1st Floor

WIDTH: 2.98 m • LENGTH: 3.58 m
AREA: 10.67 m² • PERIMETER: 13.12 m



▼ Hall
1st Floor

WIDTH: 0.98 m • LENGTH: 3.58 m
AREA: 3.50 m² • PERIMETER: 9.12 m



▼ Hall/1st Floor

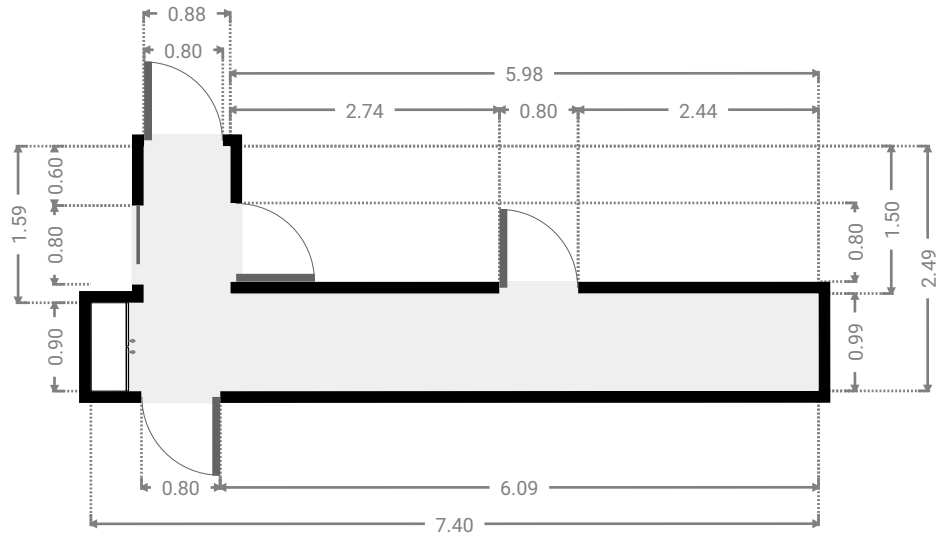
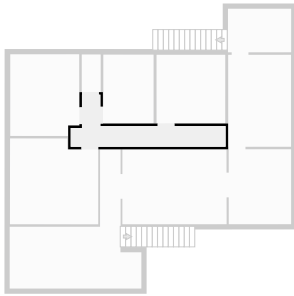
2 OPENING

Height
0.00 m



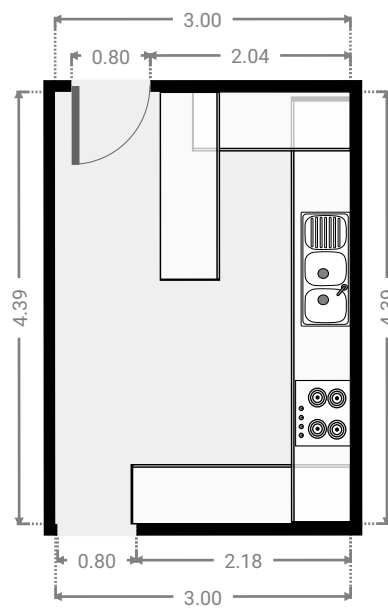
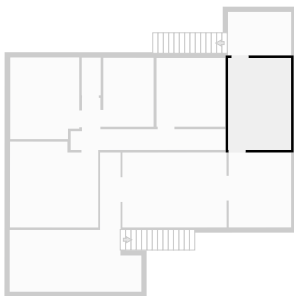
▼ **Hall**
1st Floor

WIDTH: 7.40 m • LENGTH: 2.49 m
AREA: 8.60 m² • PERIMETER: 19.78 m



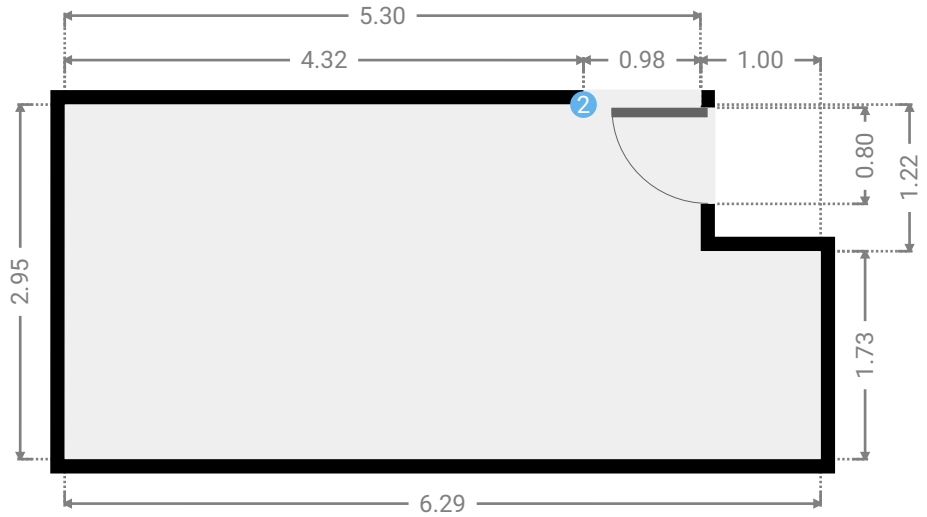
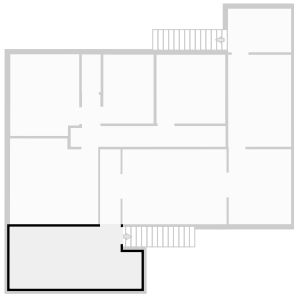
▼ **Kitchen**
1st Floor

WIDTH: 3.00 m • LENGTH: 4.39 m
AREA: 13.18 m² • PERIMETER: 14.79 m



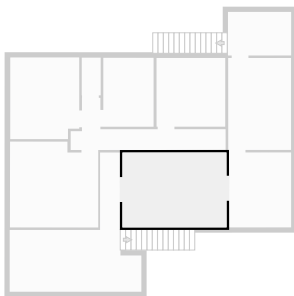
▼ Living Room
1st Floor

WIDTH: 6.29 m • LENGTH: 2.95 m
AREA: 17.33 m² • PERIMETER: 18.48 m



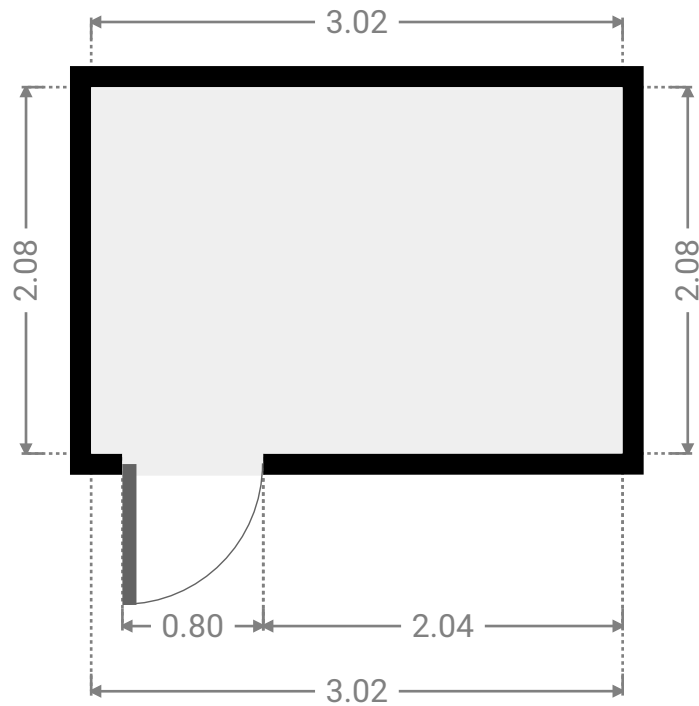
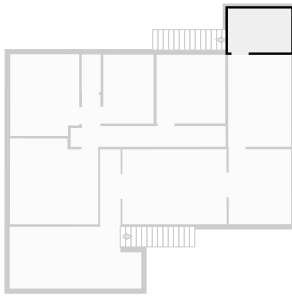
▼ Living Room
1st Floor

WIDTH: 4.98 m • LENGTH: 3.58 m
AREA: 17.81 m² • PERIMETER: 17.11 m



▼ **Other**
1st Floor

WIDTH: 3.02 m • LENGTH: 2.08 m
AREA: 6.28 m² • PERIMETER: 10.20 m



▼ **Toilet**
1st Floor

WIDTH: 0.90 m • LENGTH: 1.80 m
AREA: 1.63 m² • PERIMETER: 5.41 m

