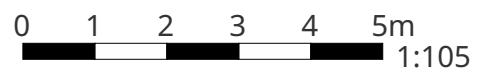


# 354 Dean Street

## Ground Floor

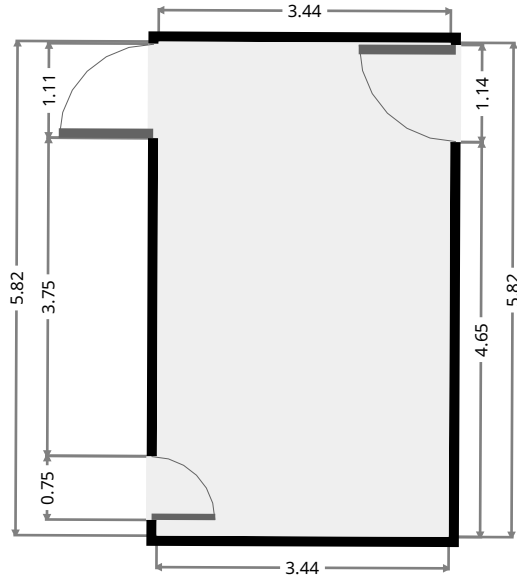
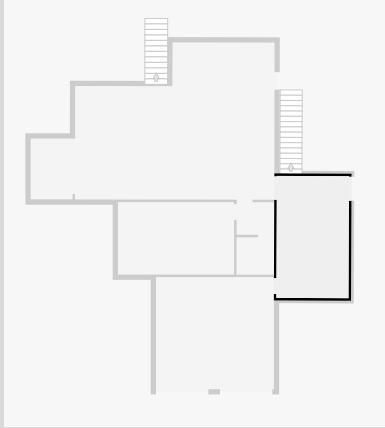


THIS FLOORPLAN IS PROVIDED WITHOUT WARRANTY OF ANY KIND. SENSOPIA DISCLAIMS ANY WARRANTY INCLUDING, WITHOUT LIMITATION, SATISFACTORY QUALITY OR ACCURACY OF DIMENSIONS.



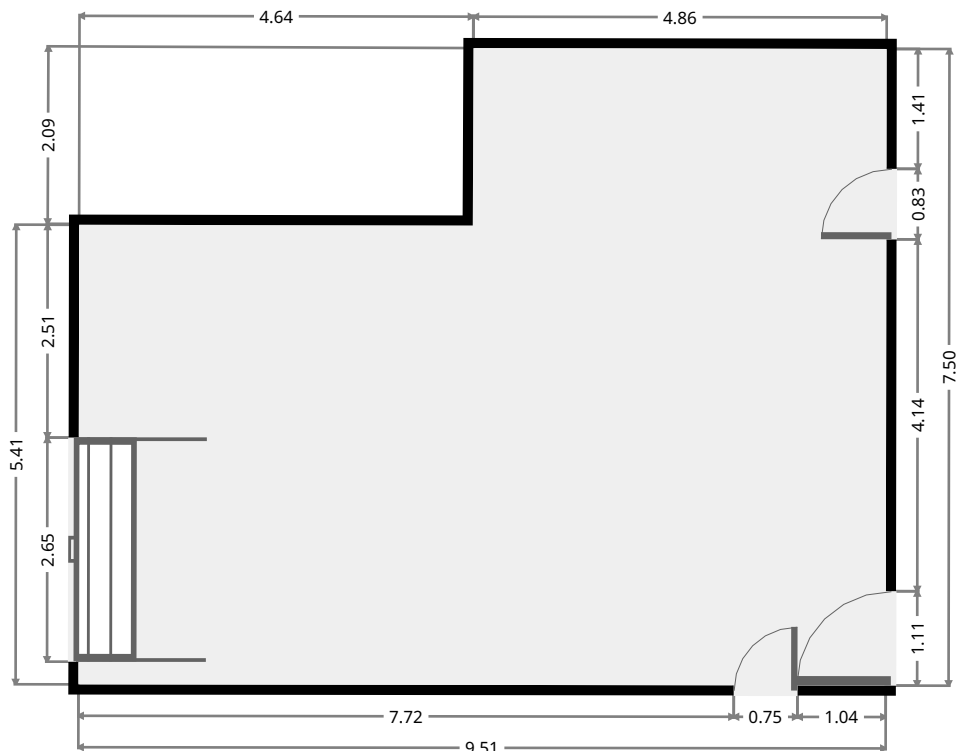
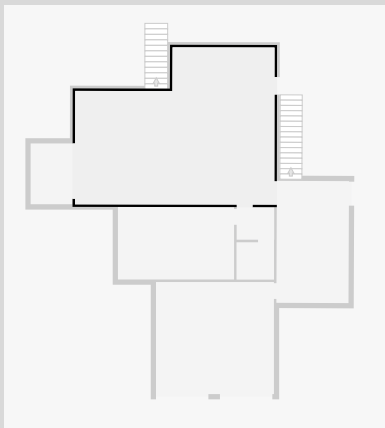
# 354 Dean Street

•  
 Width: 3.44 m  
 Length: 5.82 m  
 Area: 20.02 m<sup>2</sup>  
 Perimeter: 18.52 m



## Garage

Width: 7.50 m  
 Length: 9.51 m  
 Area: 61.61 m<sup>2</sup>  
 Perimeter: 34.01 m

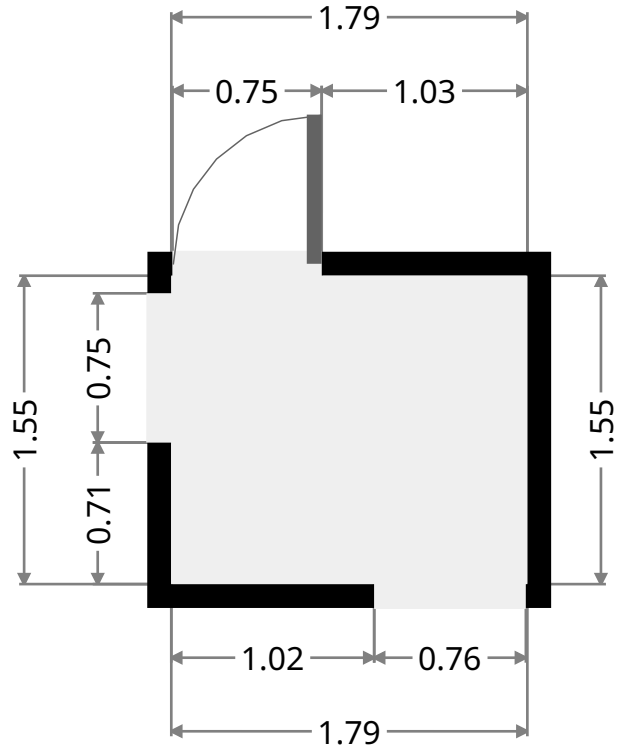
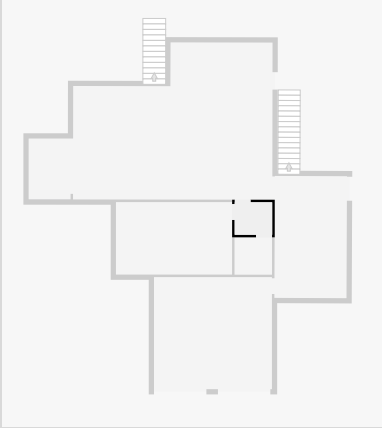


THIS FLOORPLAN IS PROVIDED WITHOUT WARRANTY OF ANY KIND. SENSOPIA DISCLAIMS ANY WARRANTY INCLUDING, WITHOUT LIMITATION, SATISFACTORY QUALITY OR ACCURACY OF DIMENSIONS.

# 354 Dean Street

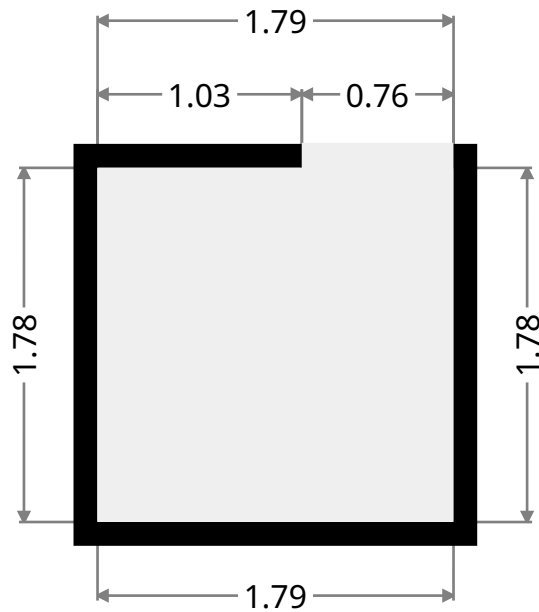
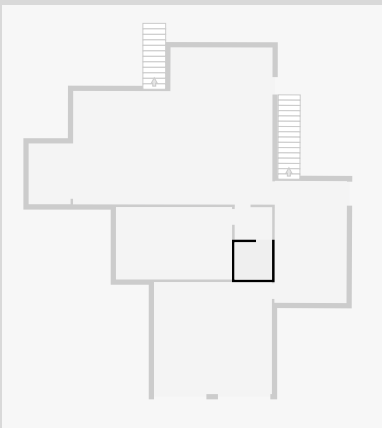
## Hall

Width: 1.55 m  
Length: 1.79 m  
Area: 2.78 m<sup>2</sup>  
Perimeter: 6.68 m



## Bathroom

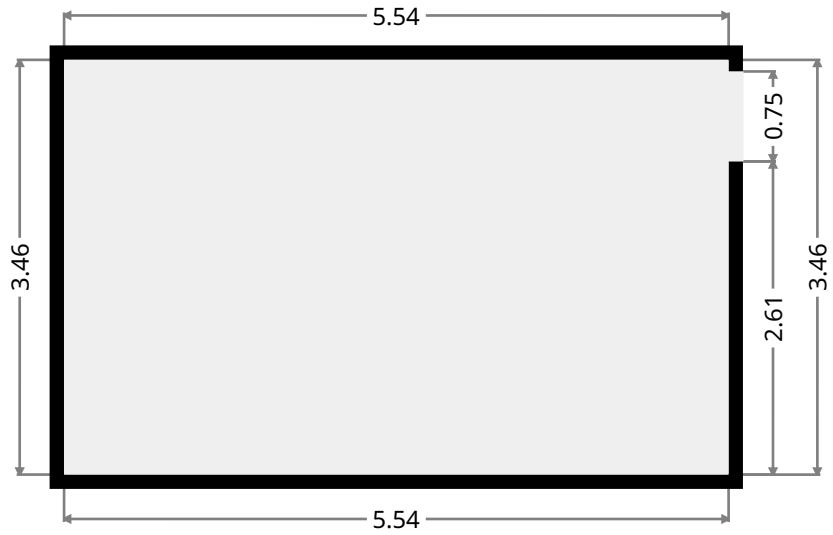
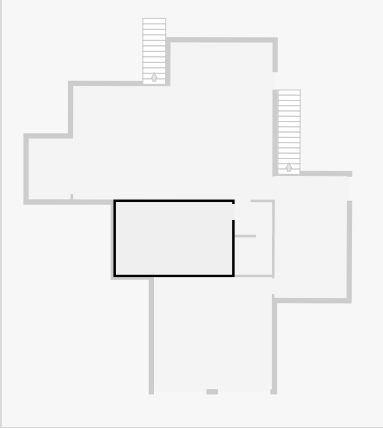
Width: 1.78 m  
Length: 1.79 m  
Area: 3.19 m<sup>2</sup>  
Perimeter: 7.14 m



# 354 Dean Street

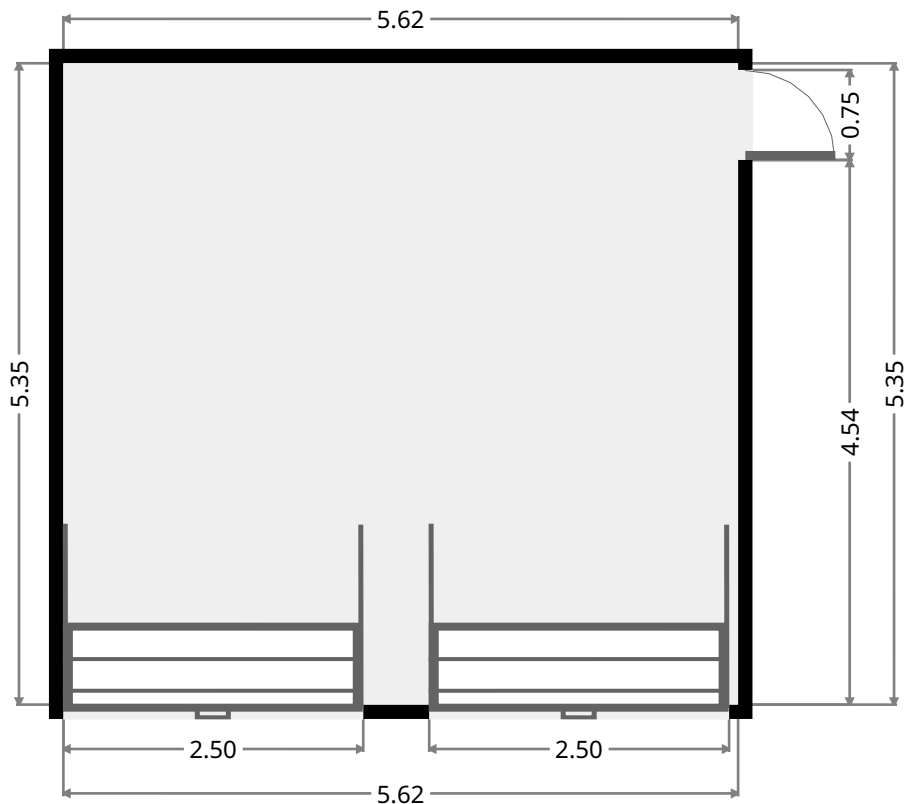
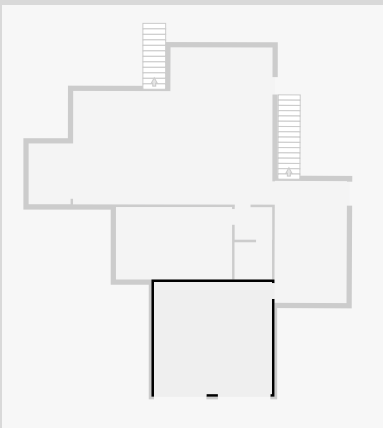
## Bedroom

Width: 3.46 m  
Length: 5.54 m  
Area: 19.15 m<sup>2</sup>  
Perimeter: 17.99 m

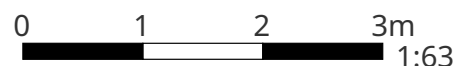


## Garage

Width: 5.35 m  
Length: 5.62 m  
Area: 30.07 m<sup>2</sup>  
Perimeter: 21.94 m

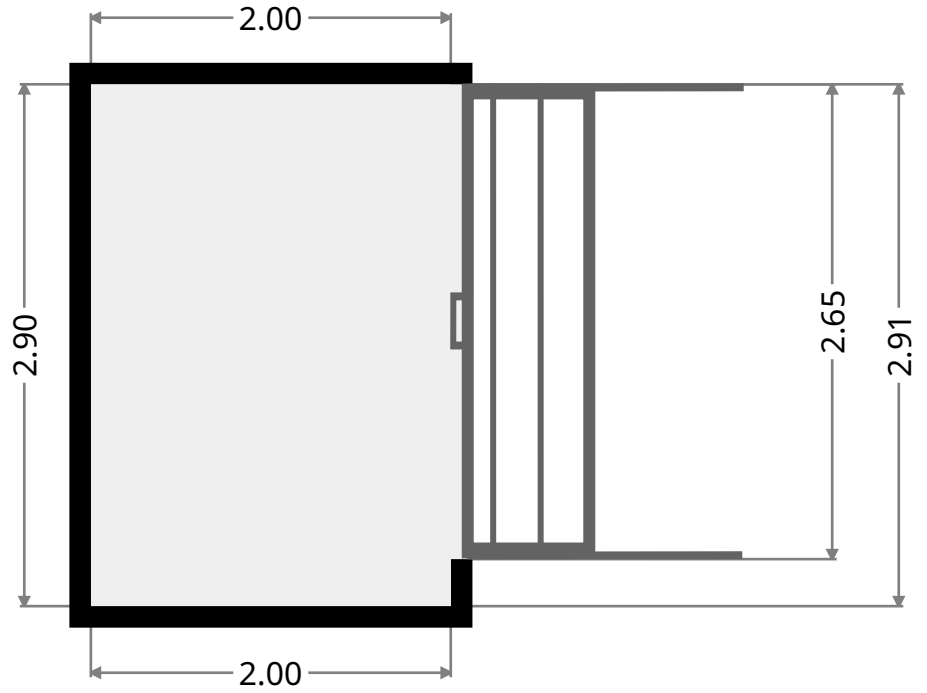
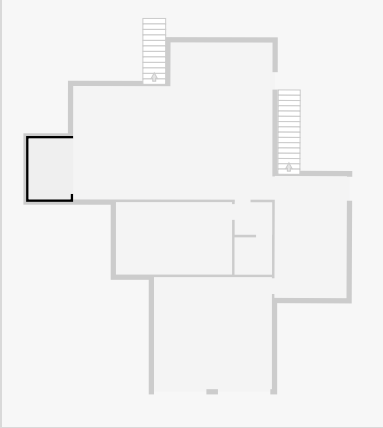


THIS FLOORPLAN IS PROVIDED WITHOUT WARRANTY OF ANY KIND. SENSOPIA DISCLAIMS ANY WARRANTY INCLUDING, WITHOUT LIMITATION, SATISFACTORY QUALITY OR ACCURACY OF DIMENSIONS.



# 354 Dean Street

•  
Width: 2.00 m  
Length: 2.90 m  
Area: 5.80 m<sup>2</sup>  
Perimeter: 9.80 m



# 354 Dean Street

## 1st Floor



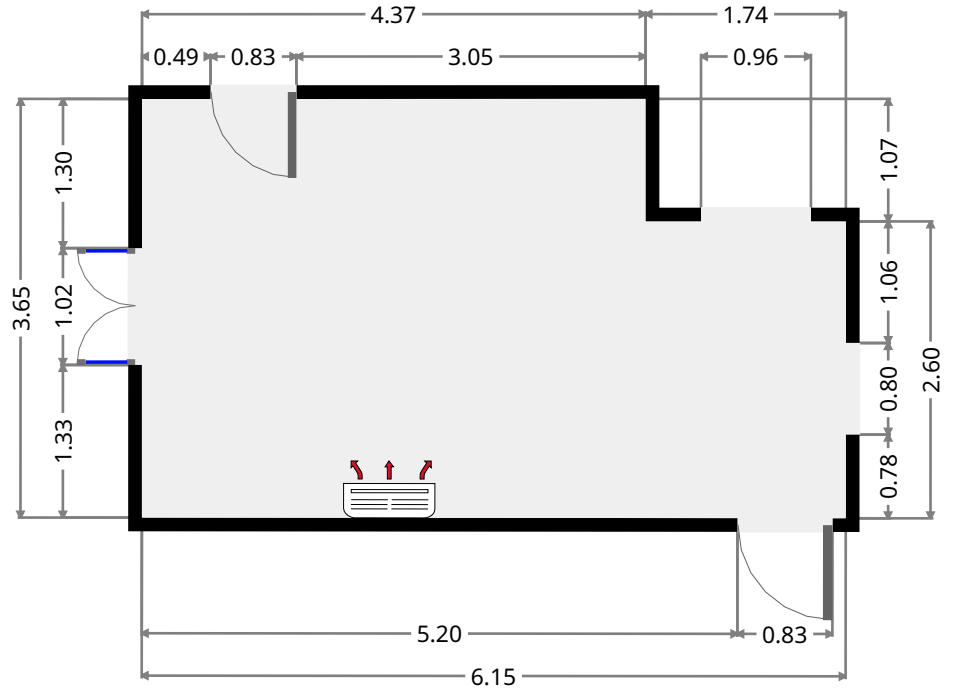
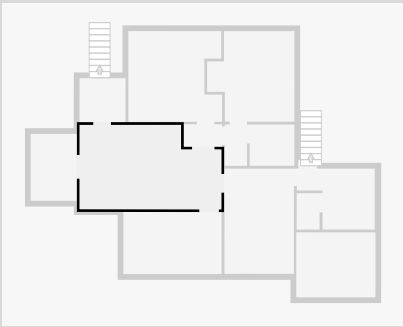
THIS FLOORPLAN IS PROVIDED WITHOUT WARRANTY OF ANY KIND. SENSOPIA DISCLAIMS ANY WARRANTY INCLUDING, WITHOUT LIMITATION, SATISFACTORY QUALITY OR ACCURACY OF DIMENSIONS.



# 354 Dean Street

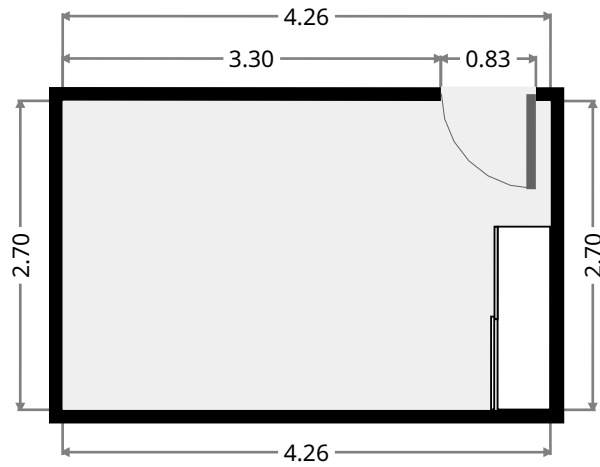
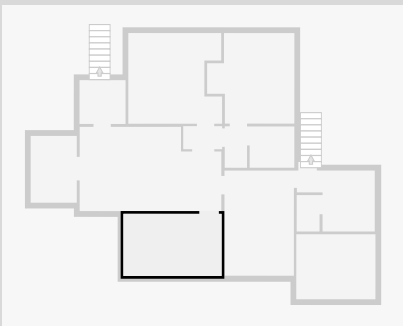
## Living Room

Width: 3.65 m  
 Length: 6.15 m  
 Area: 20.63 m<sup>2</sup>  
 Perimeter: 19.61 m



## Bedroom

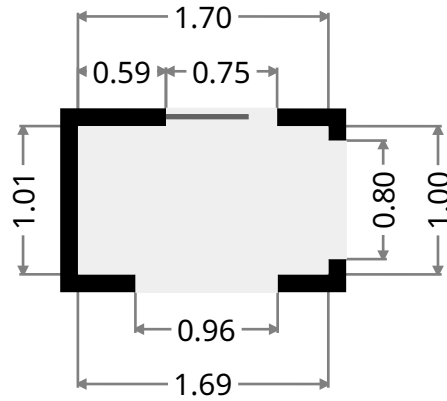
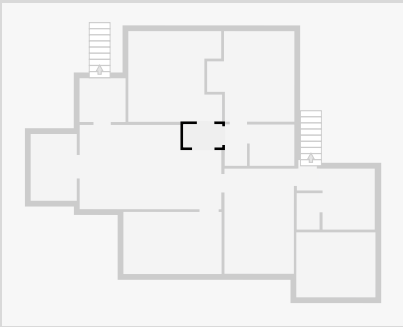
Width: 2.70 m  
 Length: 4.26 m  
 Area: 11.49 m<sup>2</sup>  
 Perimeter: 13.91 m



# 354 Dean Street

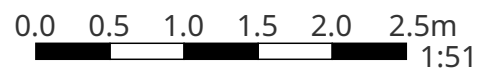
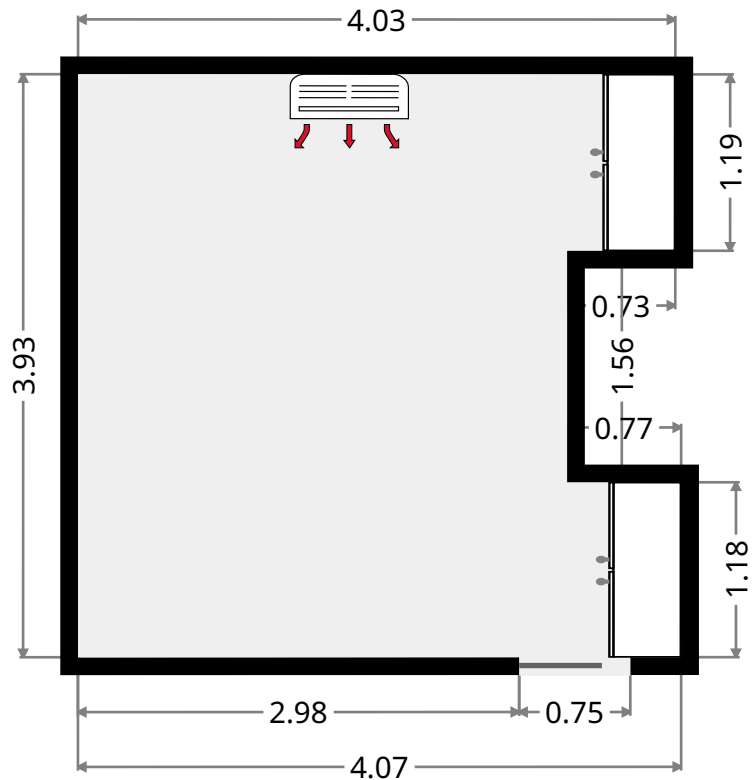
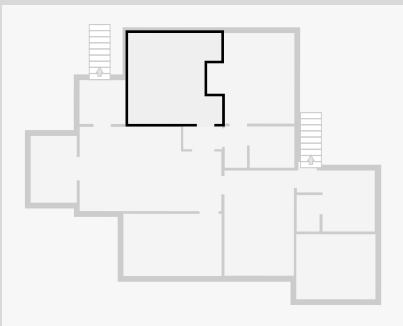
## Hall

Width: 1.01 m  
 Length: 1.69 m  
 Area: 1.69 m<sup>2</sup>  
 Perimeter: 5.38 m



## Bedroom

Width: 3.93 m  
 Length: 4.07 m  
 Area: 14.76 m<sup>2</sup>  
 Perimeter: 17.47 m



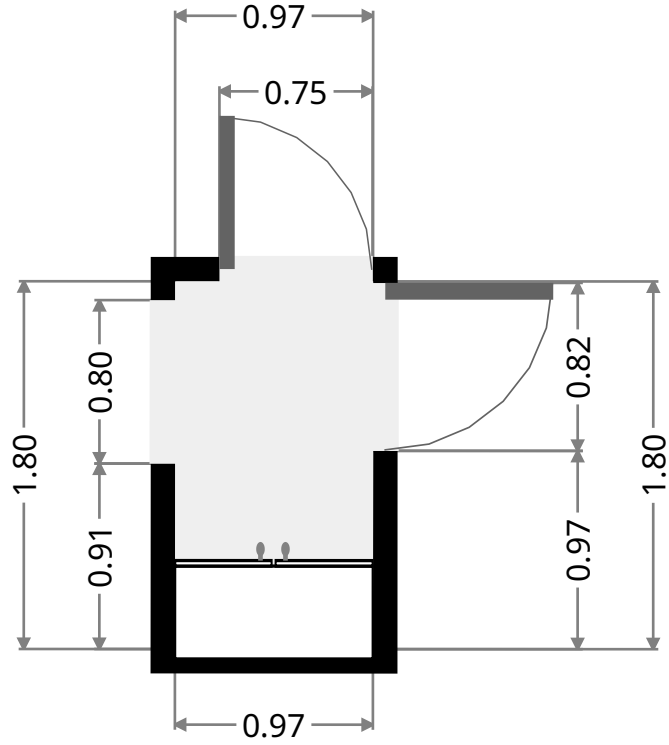
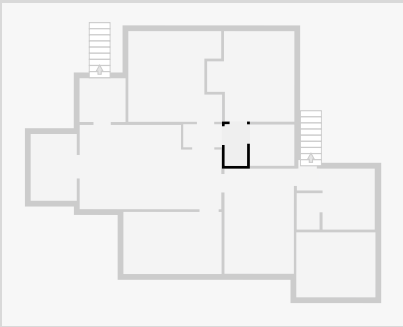
THIS FLOORPLAN IS PROVIDED WITHOUT WARRANTY OF ANY KIND. SENSOPIA DISCLAIMS ANY WARRANTY INCLUDING, WITHOUT LIMITATION, SATISFACTORY QUALITY OR ACCURACY OF DIMENSIONS.



# 354 Dean Street

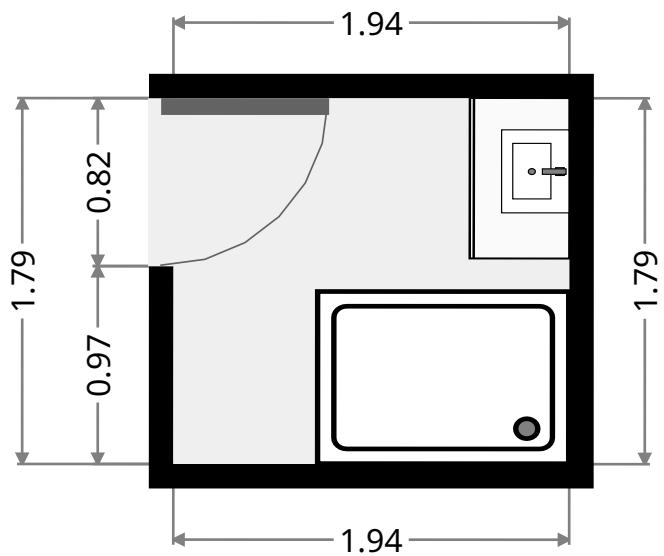
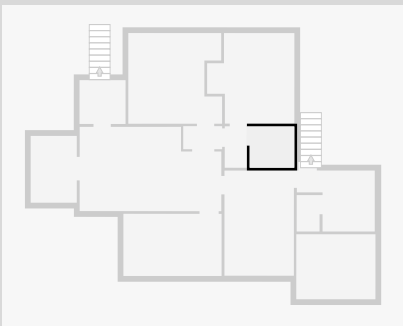
## Hall

Width: 0.97 m  
Length: 1.80 m  
Area: 1.75 m<sup>2</sup>  
Perimeter: 5.54 m



## Bathroom

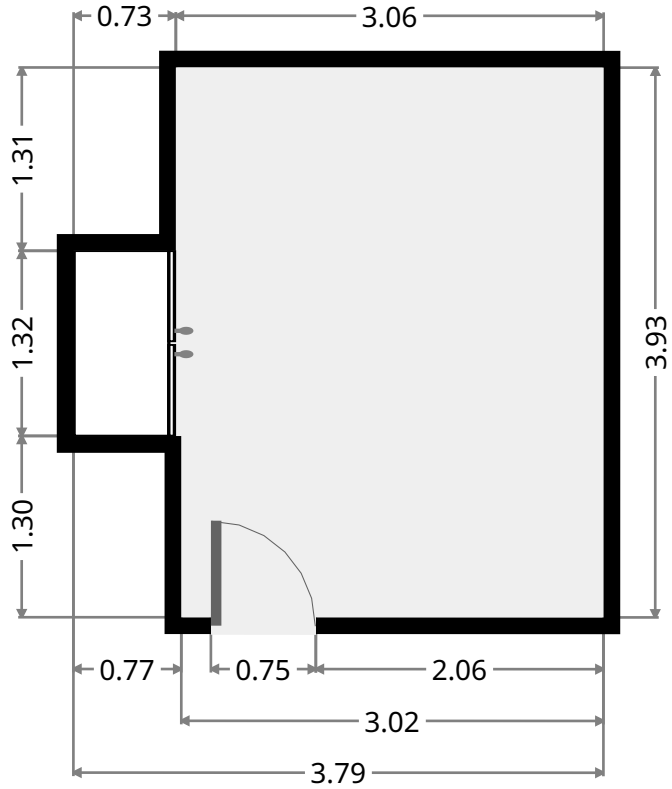
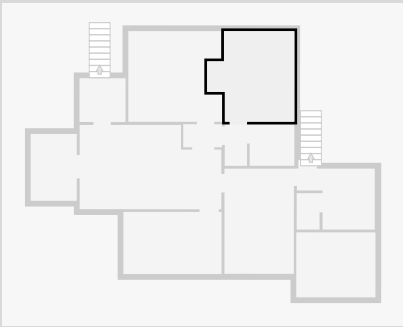
Width: 1.79 m  
Length: 1.94 m  
Area: 3.47 m<sup>2</sup>  
Perimeter: 7.46 m



# 354 Dean Street

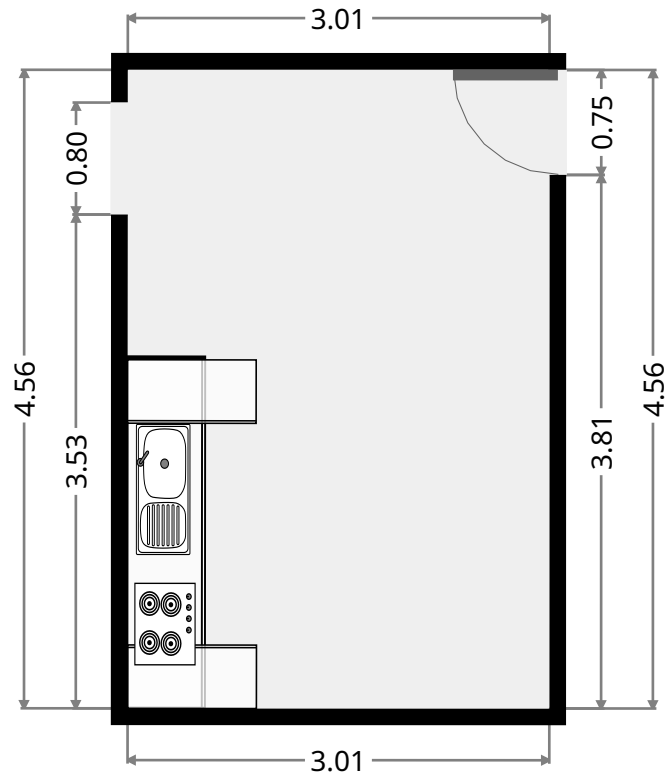
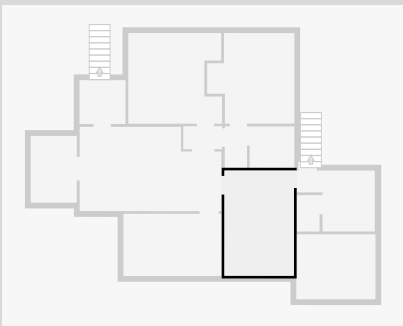
## Bedroom

Width: 3.79 m  
 Length: 3.93 m  
 Area: 12.92 m<sup>2</sup>  
 Perimeter: 15.43 m

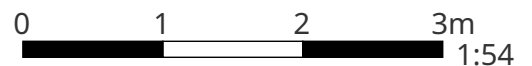


## Kitchen

Width: 3.01 m  
 Length: 4.56 m  
 Area: 13.75 m<sup>2</sup>  
 Perimeter: 15.15 m



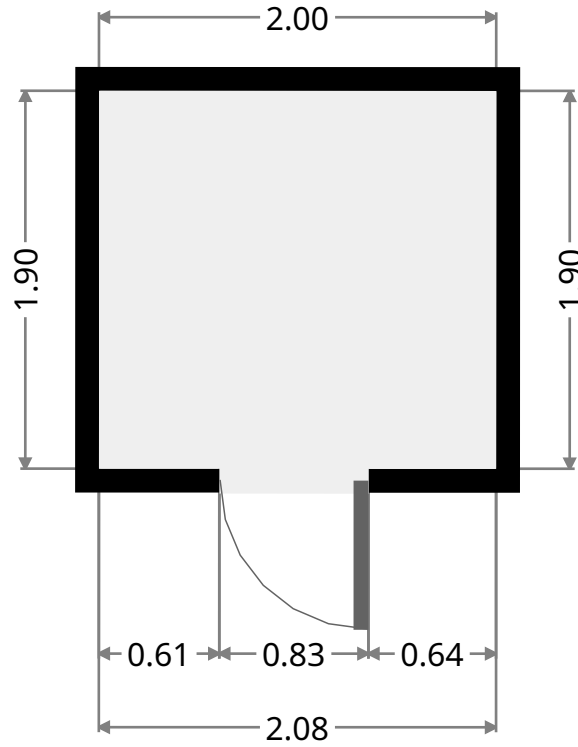
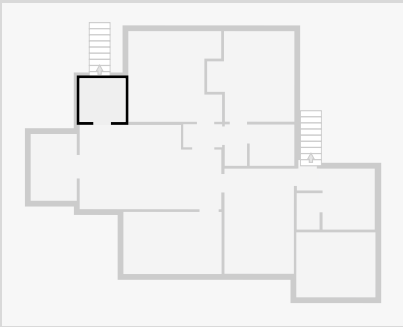
THIS FLOORPLAN IS PROVIDED WITHOUT WARRANTY OF ANY KIND. SENSOPIA DISCLAIMS ANY WARRANTY INCLUDING, WITHOUT LIMITATION, SATISFACTORY QUALITY OR ACCURACY OF DIMENSIONS.



# 354 Dean Street

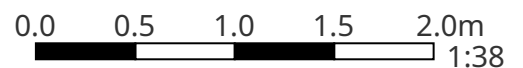
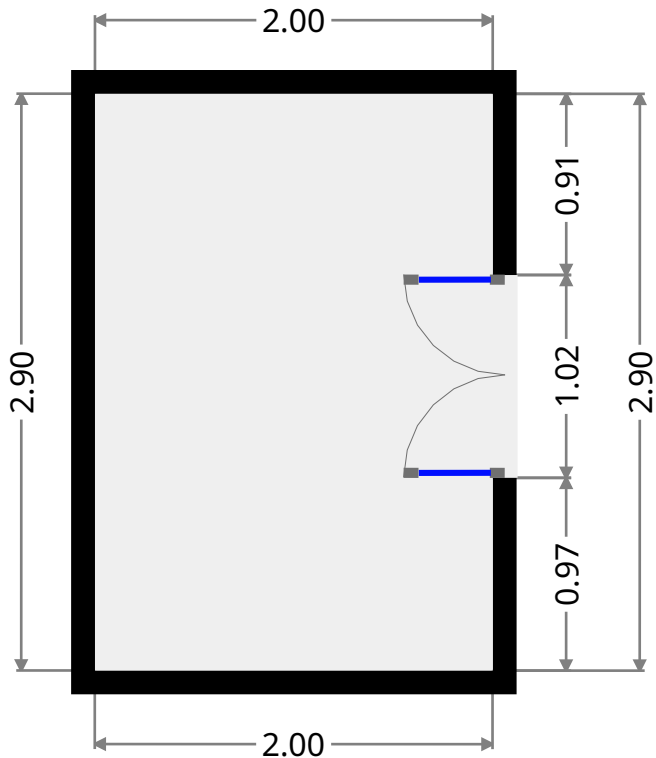
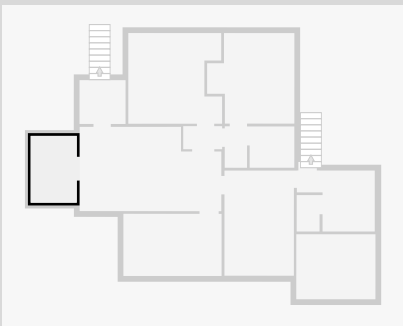
## Hall

Width: 1.90 m  
 Length: 2.00 m  
 Area: 3.79 m<sup>2</sup>  
 Perimeter: 7.79 m



## Balcony

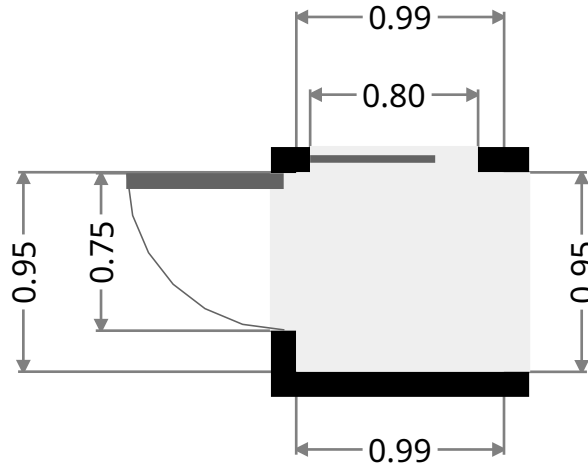
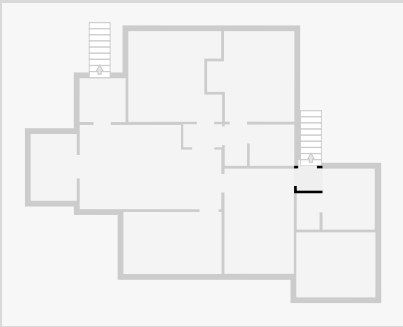
Width: 2.00 m  
 Length: 2.90 m  
 Area: 5.80 m<sup>2</sup>  
 Perimeter: 9.80 m



# 354 Dean Street

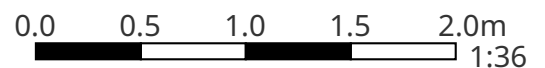
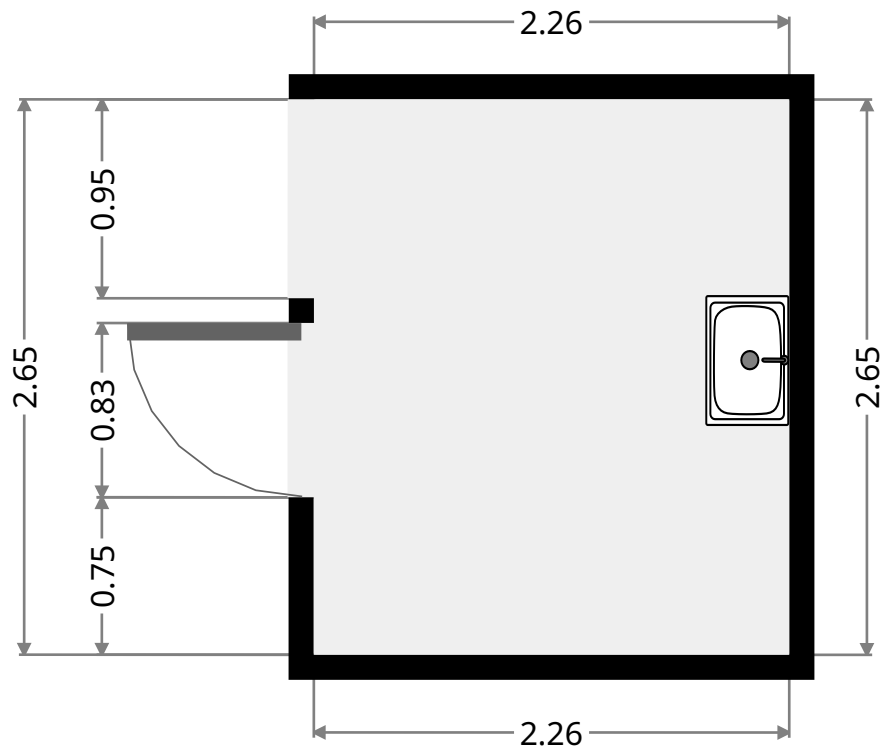
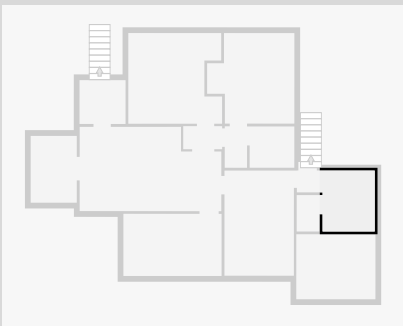
## Hall

Width: 0.95 m  
Length: 0.99 m  
Area: 0.94 m<sup>2</sup>  
Perimeter: 3.88 m



## Laundry Room

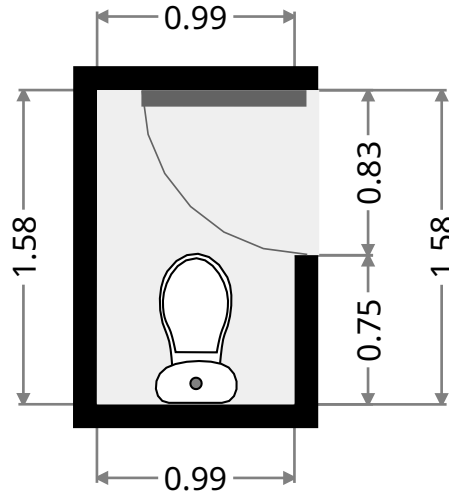
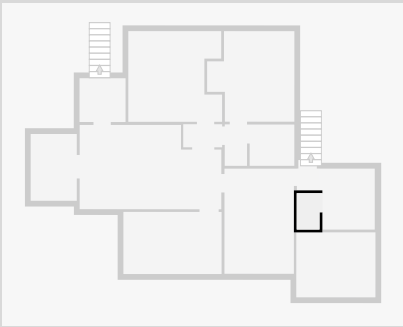
Width: 2.26 m  
Length: 2.65 m  
Area: 5.99 m<sup>2</sup>  
Perimeter: 9.82 m



# 354 Dean Street

## Toilet

Width: 0.99 m  
Length: 1.58 m  
Area: 1.57 m<sup>2</sup>  
Perimeter: 5.15 m



## Deck

Width: 2.82 m  
Length: 3.44 m  
Area: 9.69 m<sup>2</sup>  
Perimeter: 12.51 m

