

# 350 Hobbler Avenue

**SUBMITTED BY**  
Ray White Rockhampton Casey  
stockers@cqoz.com

---

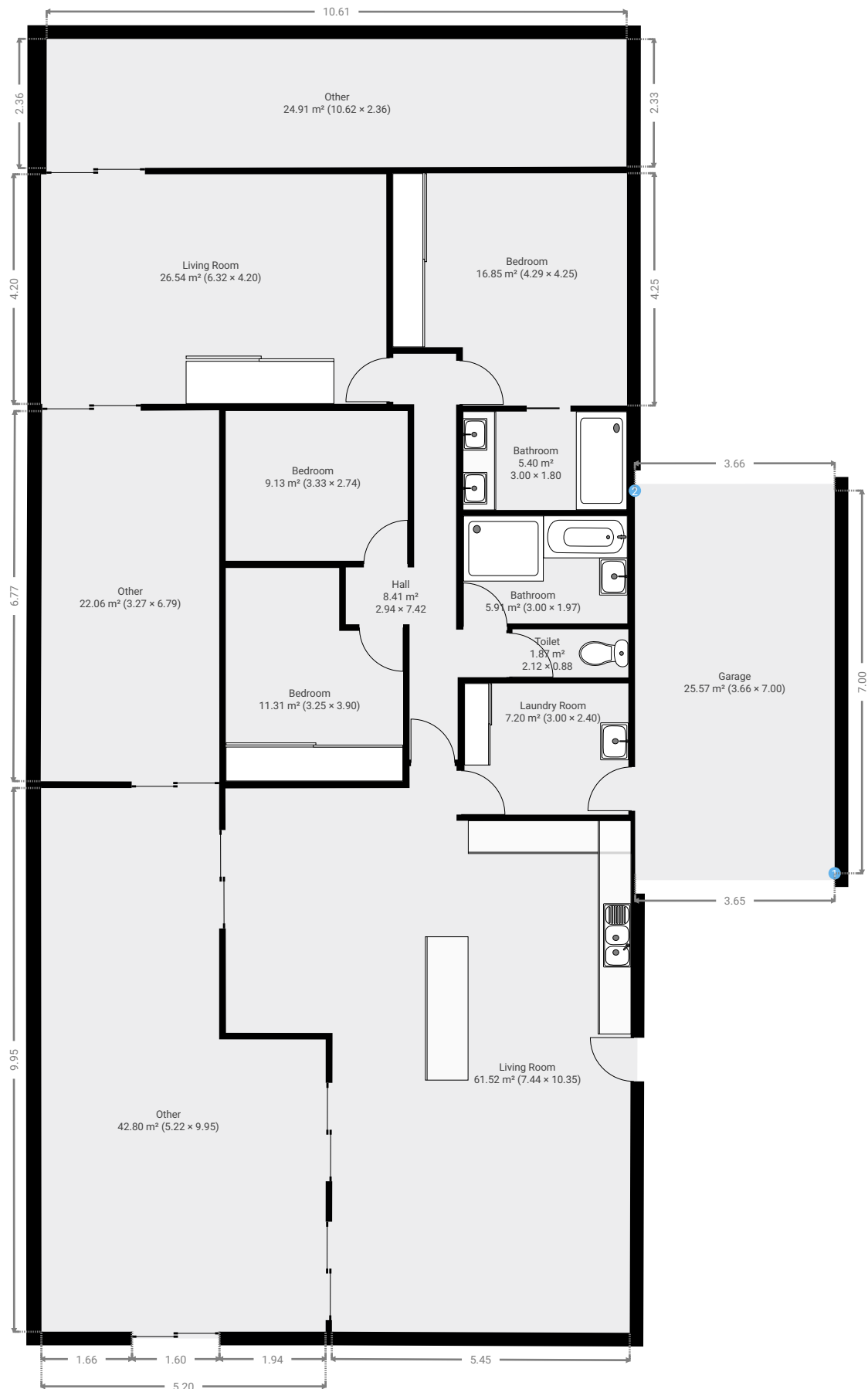
**CREATED ON**  
2022-11-02

---

**Floors**  
1

---

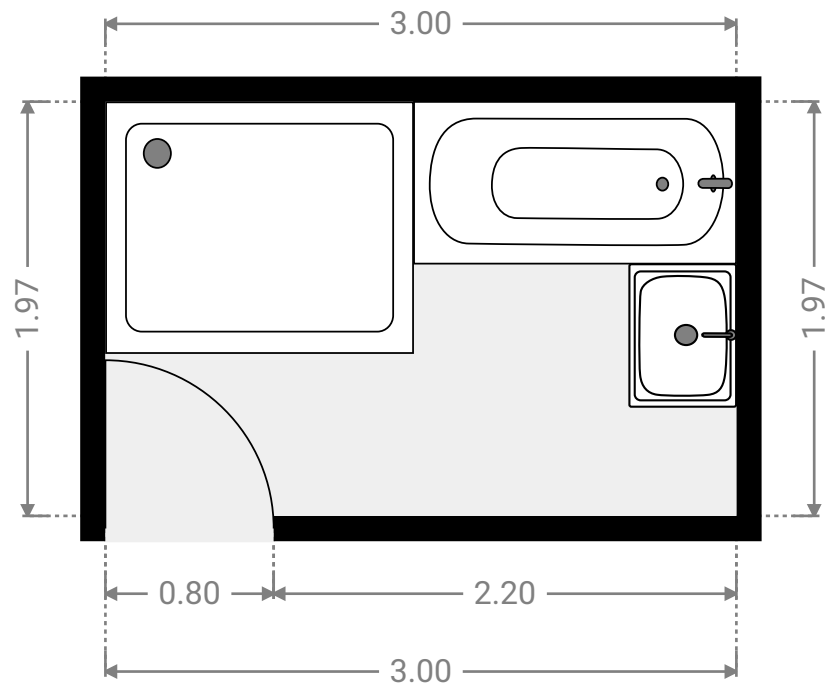
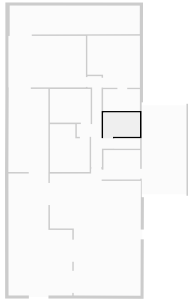
▼ Ground Floor



FLOORS: 1

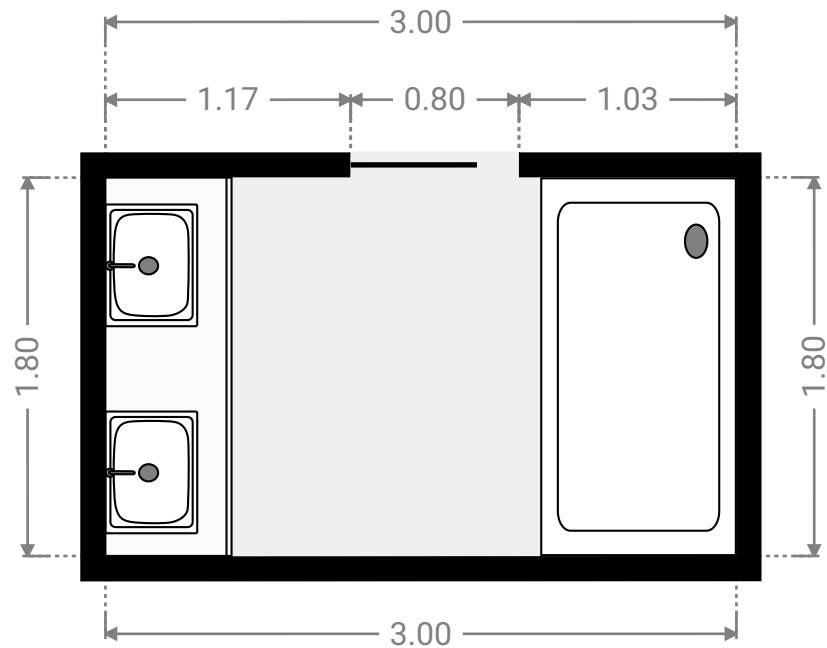
▼ **Bathroom**  
Ground Floor

WIDTH: 3.00 m • LENGTH: 1.97 m  
AREA: 5.91 m<sup>2</sup> • PERIMETER: 9.94 m



▼ **Bathroom**  
Ground Floor

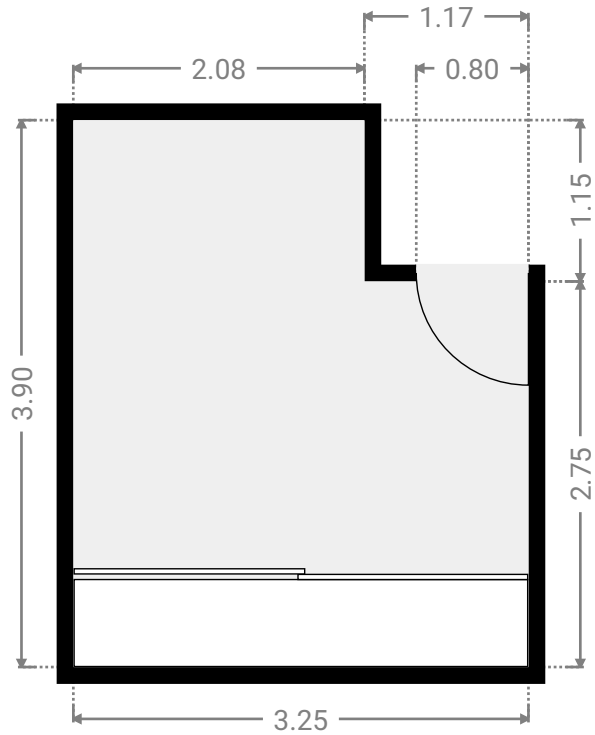
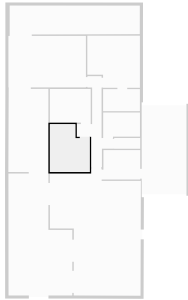
WIDTH: 3.00 m • LENGTH: 1.80 m  
AREA: 5.40 m<sup>2</sup> • PERIMETER: 9.60 m



FLOORS: 1

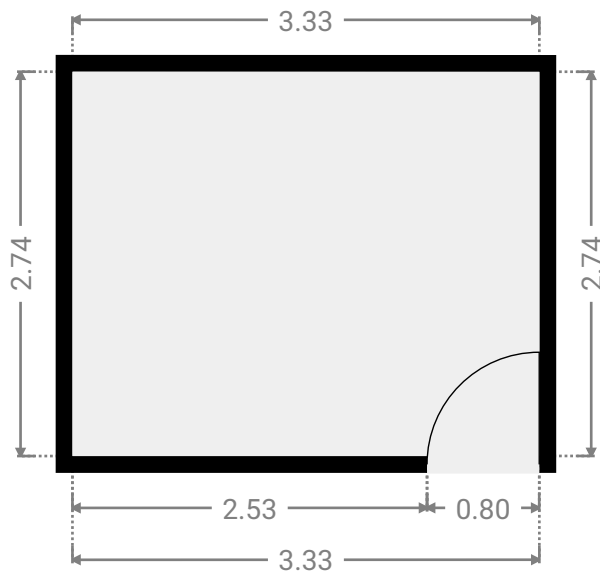
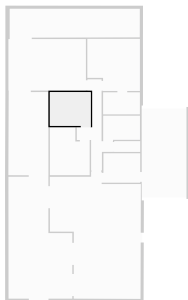
▼ **Bedroom**  
Ground Floor

WIDTH: 3.25 m • LENGTH: 3.90 m  
AREA: 11.31 m<sup>2</sup> • PERIMETER: 14.29 m



▼ **Bedroom**  
Ground Floor

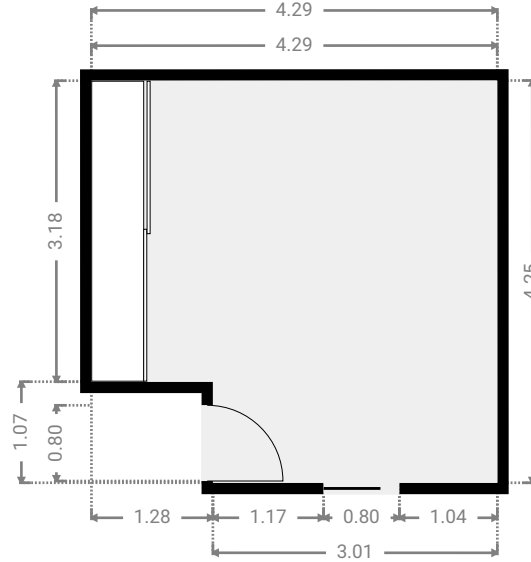
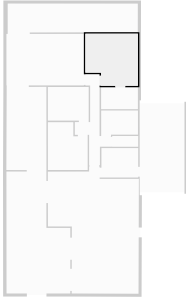
WIDTH: 3.33 m • LENGTH: 2.74 m  
AREA: 9.13 m<sup>2</sup> • PERIMETER: 12.14 m



FLOORS: 1

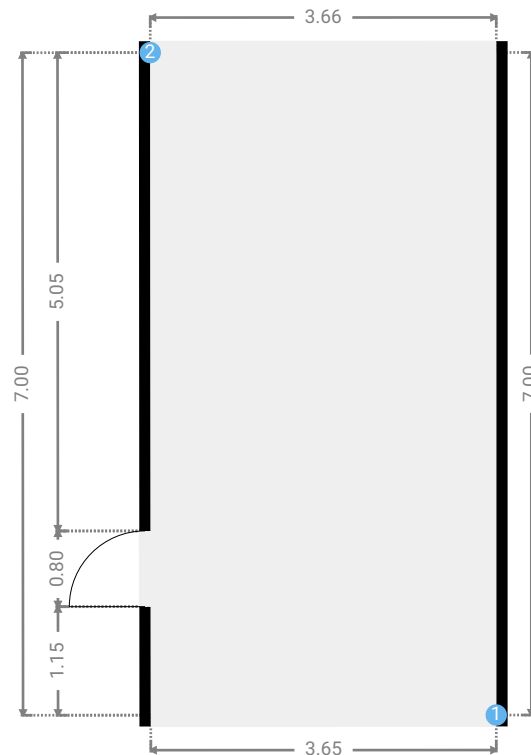
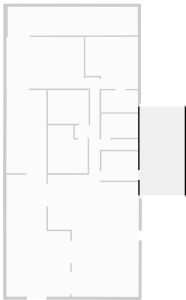
▼ **Bedroom**  
Ground Floor

WIDTH: 4.29 m • LENGTH: 4.25 m  
AREA: 16.85 m<sup>2</sup> • PERIMETER: 17.08 m



▼ **Garage**  
Ground Floor

WIDTH: 3.66 m • LENGTH: 7.00 m  
AREA: 25.57 m<sup>2</sup> • PERIMETER: 21.31 m



▼ **Garage/Ground Floor**

---

**1 OPENING**

Height  
0.00 m



---

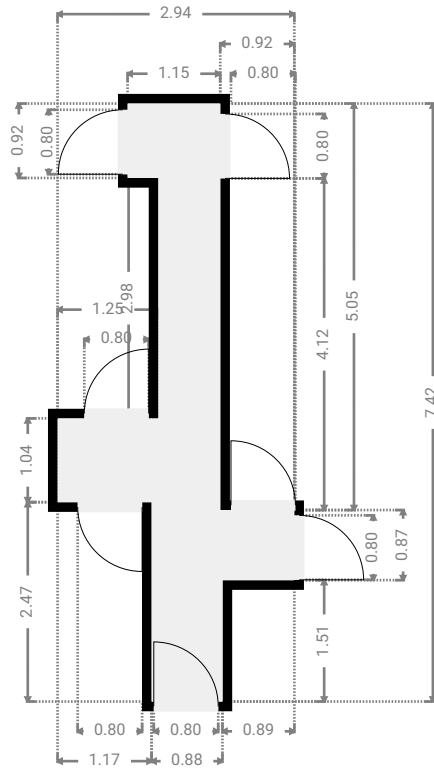
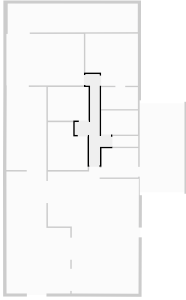
**2 OPENING**

Height  
0.00 m



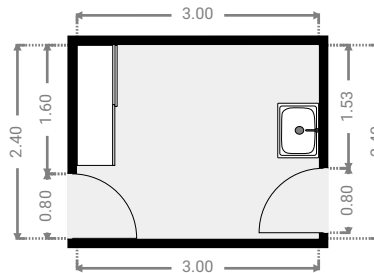
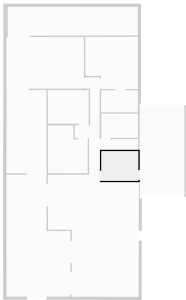
▼ Hall  
Ground Floor

WIDTH: 2.94 m • LENGTH: 7.42 m  
AREA: 8.41 m<sup>2</sup> • PERIMETER: 21.49 m



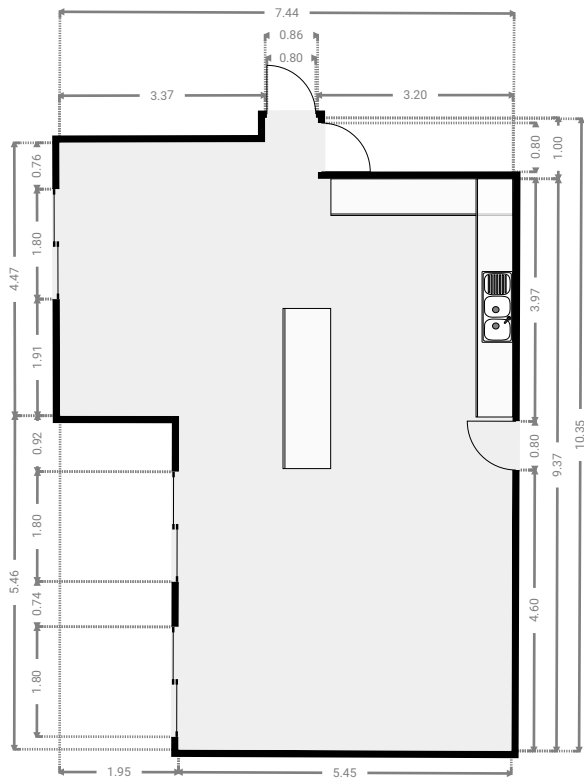
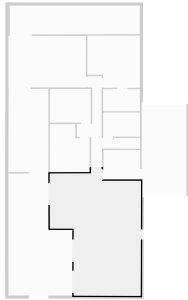
▼ Laundry Room  
Ground Floor

WIDTH: 3.00 m • LENGTH: 2.40 m  
AREA: 7.20 m<sup>2</sup> • PERIMETER: 10.80 m



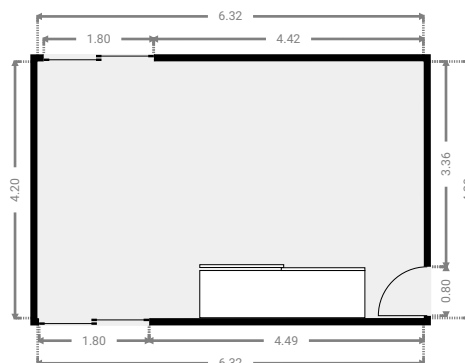
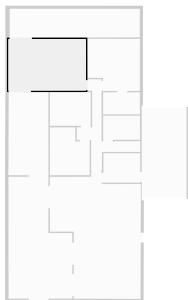
▼ Living Room  
Ground Floor

WIDTH: 7.44 m • LENGTH: 10.35 m  
AREA: 61.52 m<sup>2</sup> • PERIMETER: 35.53 m



▼ Living Room  
Ground Floor

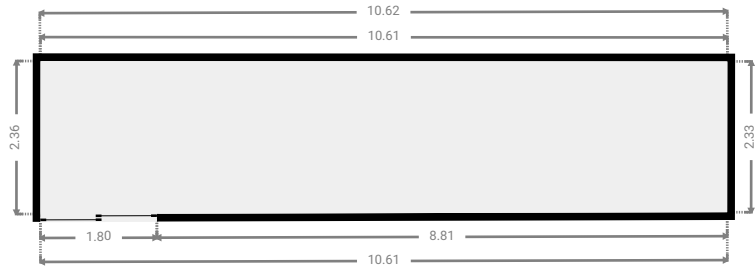
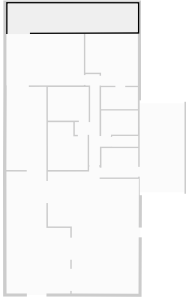
WIDTH: 6.32 m • LENGTH: 4.20 m  
AREA: 26.54 m<sup>2</sup> • PERIMETER: 21.04 m





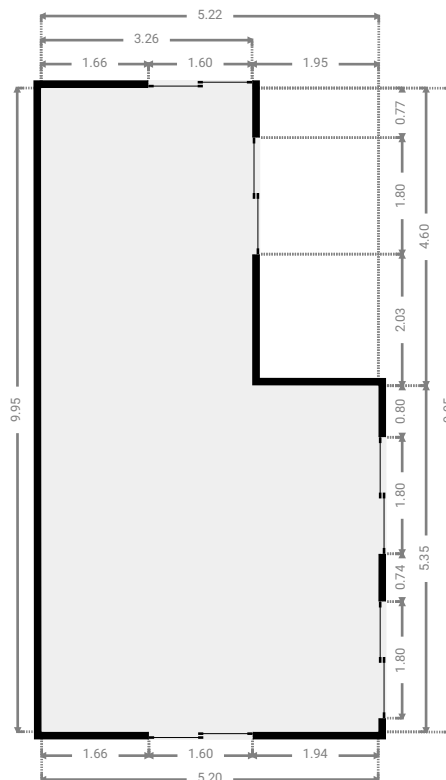
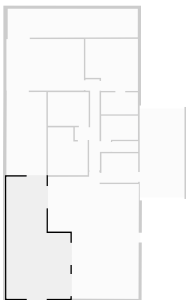
▼ Other  
Ground Floor

WIDTH: 10.62 m • LENGTH: 2.36 m  
AREA: 24.91 m<sup>2</sup> • PERIMETER: 25.92 m



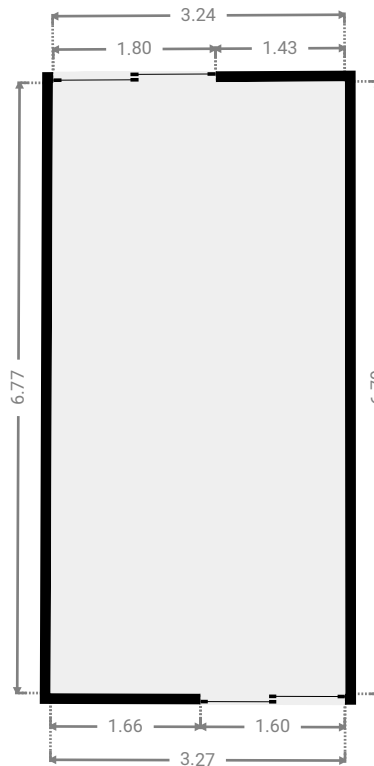
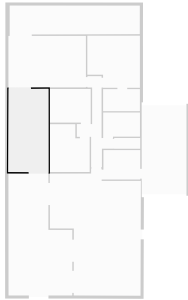
▼ Other  
Ground Floor

WIDTH: 5.22 m • LENGTH: 9.95 m  
AREA: 42.80 m<sup>2</sup> • PERIMETER: 30.30 m



▼ **Other**  
Ground Floor

WIDTH: 3.27 m • LENGTH: 6.79 m  
AREA: 22.06 m<sup>2</sup> • PERIMETER: 20.07 m



▼ **Toilet**  
Ground Floor

WIDTH: 2.12 m • LENGTH: 0.88 m  
AREA: 1.87 m<sup>2</sup> • PERIMETER: 6.00 m

